

ALTA / NSPS
LAND TITLE SURVEY

ALTA / NSPS
LAND TITLE SURVEY

WHITE OAK BUSINESS PARK-UNIT 1 SUBDIVISION
RECORDED JULY 6, 1990 AS DOCUMENT R90-083896

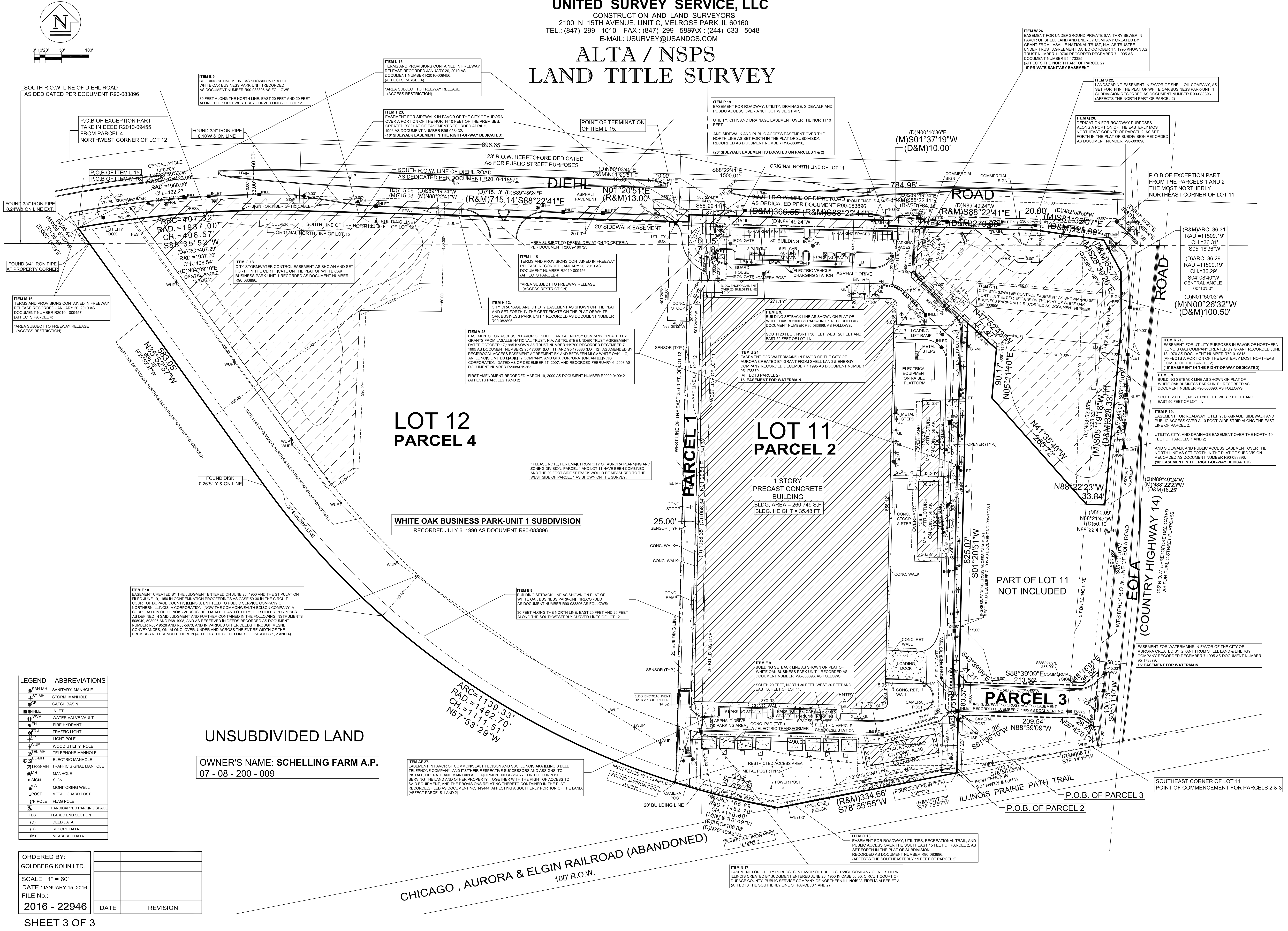
PART OF LOT 11
NOT INCLUDED

OWNER'S NAME: **SCHELLING FARM A.P.**
07 - 08 - 200 - 009

SHEET 2 OF 3

UNITED SURVEY SERVICE, LLC
CONSTRUCTION AND LAND SURVEYORS
2100 N. 15TH AVENUE, UNIT C, MELROSE PARK, IL 60160
TEL.: (847) 299 - 1010 FAX: (847) 299 - 588 FAX: (244) 633 - 5048
E-MAIL: USURVEY@USANDCS.COM

ALTA / NSPS
LAND TITLE SURVEY



LEGEND	ABBREVIATIONS
	● SANITARY MANHOLE
	● STORM MANHOLE
	● CATCH BASIN
	● INLET
	● WATER VALVE VAULT
	● FIRE HYDRANT
	● TRAFFIC LIGHT
	● LIGHT POLE
	● WOOD UTILITY POLE
	● TELEPHONE MANHOLE
	● TRAFFIC SIGNAL MANHOLE
	● MANHOLE
	● SIGN
	● MONITORING WELL
	● METAL GUARD POST
	● FLAG POLE
	● HANDICAPPED PARKING SPACE
	● FLARED END SECTION
	● DEED DATA
	● RECORD DATA
	● MEASURED DATA

ORDERED BY: GOLDBERG KOHN LTD.	
SCALE: 1" = 60'	
DATE: JANUARY 15, 2016	
FILE NO.:	
2016 - 22946	DATE
	REVISION