

LANDSCAPE PLAN FOR AURORA FIRE STATION #7



225 W. Jefferson Avenue  
Naperville, IL 60540  
T 630.961.1787  
hitchcockdesigngroup.com

PREPARED FOR  
**Aurora Fire Department**

75 N Broadway  
Aurora, IL 60505

PROJECT  
**Aurora Fire Station #7**  
824 Kenilworth Place  
Aurora Illinois 60506

CONSULTANTS  
DEWBERRY ARCHITECTS, INC.  
25 S. Grove Avenue  
Elgin, IL 60120  
T 847.695.5840  
F 847.695.6579

PROJECT LOCATION



ISSUED  
March 3, 2017

No	Date	Issue

CHECKED BY  
TCK

DRAWN BY  
MPW

SHEET TITLE  
**LANDSCAPE PLAN**

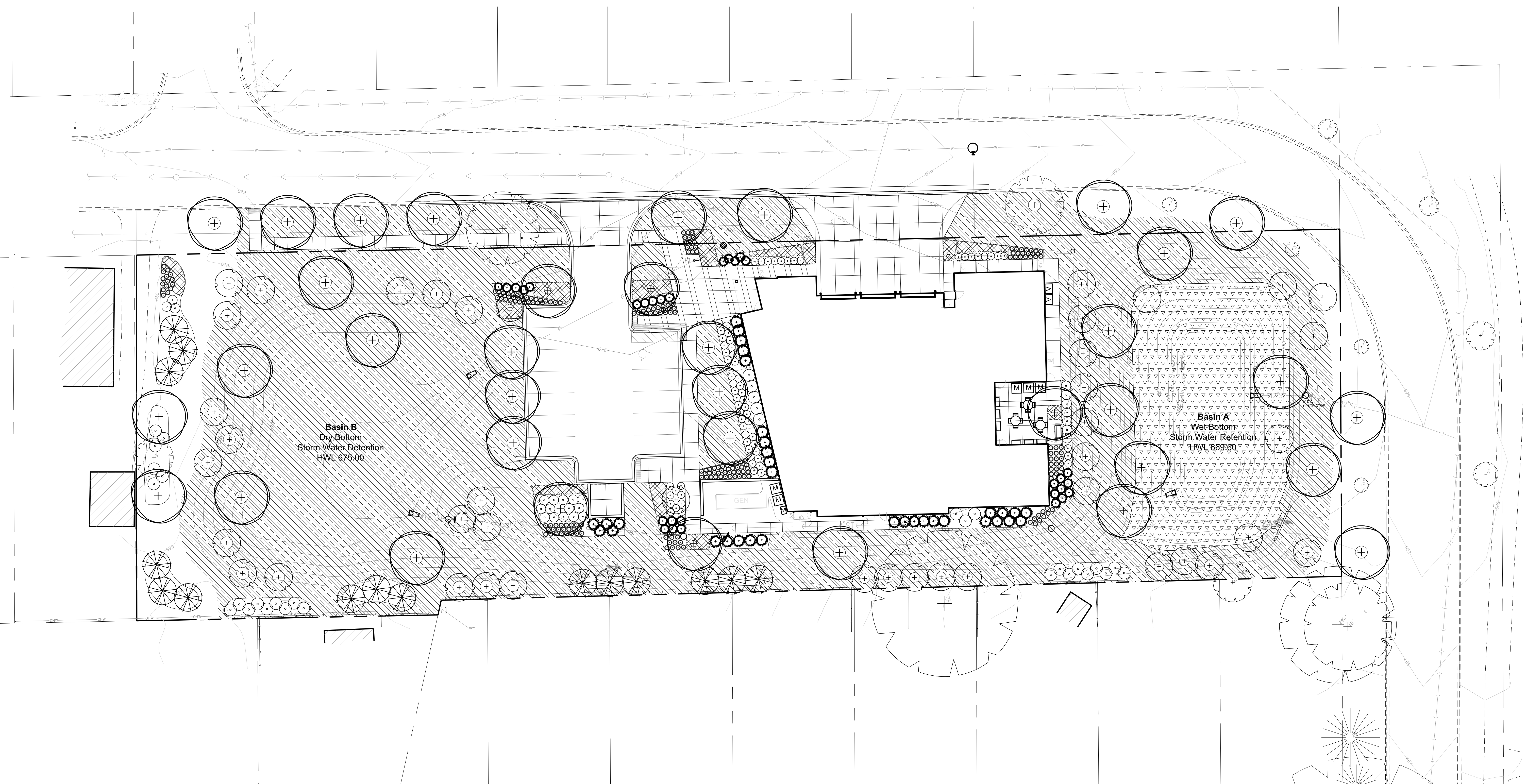
SCALE IN FEET  
1" = 20'

0' 10' 20' 60'

NORTH SHEET NUMBER

**L1.0**

©2017 Hitchcock Design Group



**Landscape Data Table: Planting Material Key**  
Note: Symbols are blackline for proposed grayscale for existing

Canopy Trees (minimum size 2.5 caliper) Count:	36
Evergreen Trees (minimum size 6 feet) Count:	15
Understory Trees (minimum size 2.5 caliper or 8 feet if multi-stemmed) Count:	42
Evergreen Shrubs (minimum of 18 inches) Count:	64

**Landscape Data Table: CTEs Provided**

	CTE Value	Count Provided	Total CTEs Provided
Canopy Trees	1	36	36
Evergreen Trees	3	15	5
Understory Trees	3	42	14
Deciduous Shrubs	20	125	6
Evergreen Shrubs	20	64	3
<b>Total:</b>		<b>282</b>	<b>64</b>

Deciduous Shrubs (minimum of 18 inches) Count:	125
Ornamental Grasses Count:	274
Perennials Count:	371
Annuals Count:	0

Groundcover Square Footage:	0
Turf (Seeded) Square Footage:	36950
Turf (Sod) Square Footage:	0
Native Prairie Planting Square Footage:	0

Native Wetland Planting Square Footage:	6735
---	------

J:\Projects\Alpha\Dewberry\Aurora Fire Station 7\09\_Graphics\02\_DD-CD\02-Planting.dwg