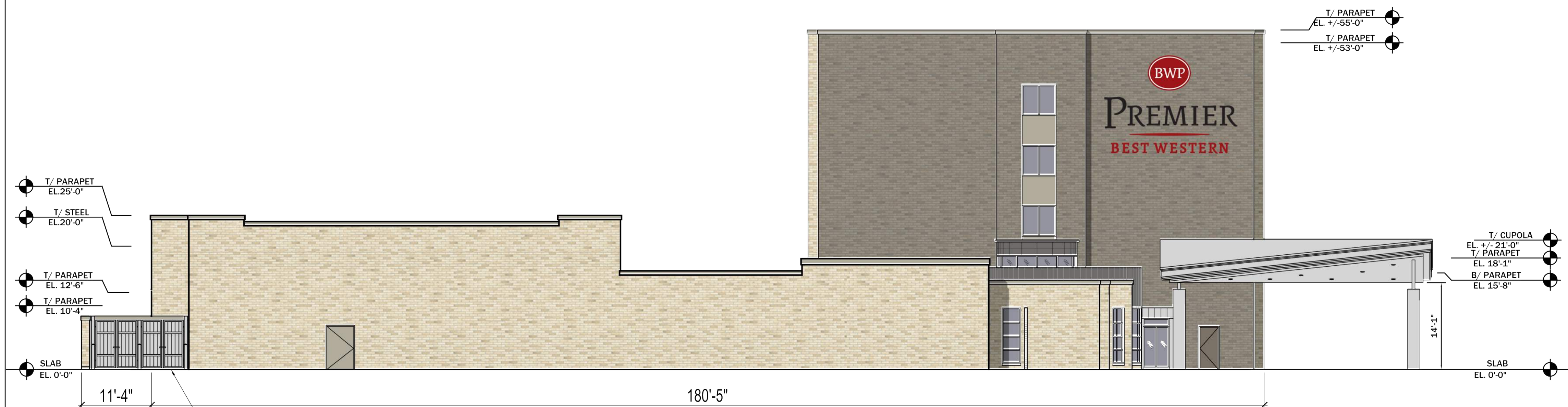




BUILDING ELEVATIONS



**01 SOUTH ELEVATION**  
3/32" = 1'-0"



**02 EAST ELEVATION**  
3/32" = 1'-0"

**MATERIAL LEGEND**

- A - EIFS WITH INTEGRAL WATER DRAINAGE SYSTEM (2", 4" THICKNESS, COLOR TBD)
- BRAND STANDARD COLORS:  
1- SHERWIN WILLIAMS - SW7038 TONY TAUPE
- B - 4" FACE BRICK MASONRY. COLOR TYPE 1, TYPE 2. TBD.
- C - PREFINISHED, 2-PART, SNAP ON PARAPET COPING AND SHEET METAL FLASHING. COLOR: (MEDIUM BRONZE - TBD)
- D - PORTE COCHERE . STEEL TUBE COLOR TO BE UNACLAD MEDIUM BRONZE, METAL PANELS TO BE TOYOTA SILVER CONCRETE COLUMNS TO BE SW# 7040 SMOKE HOUSE
- E - CAST STONE CORNICE BAND. COLOR TBD.
- F - METAL PANEL. COLOR: ALPOLIC- MEDIUM BRONZE METALLIC
- G - CONCRETE COLUMNS. COLOR: SW # 7040 SMOKE HOUSE
- H - BRAND STANDARD METAL TRELIS @ SIGNAGE WALL TO BE TOYOTA SILVER
- J - PREFINISHED ALUMINUM WINDOW AND STOREFRONT SYSTEM. COLOR TBD. TRANSLUCENT GLAZING AT ALL CLEARSTORY WINDOW LOCATIONS.
- K - CLEAR GLASS BLOCKS
- L - CANOPY STEEL TUBE FRAMING. COLOR UNACLAD MEDIUM BRONZE.
- M - INSULATED, PREFINISHED, RATED METAL DOOR AND FRAME . COLOR TBD.

- GENERAL NOTES:**
1. EIFS MATERIAL "STO CLASSIC NEXT" OR APPROVED EQUIVALENT DRAINABLE EIFS FINISH: STO FINISH "STOLIT" 1.0 SAND FINISH OR EQUIVALENT.
  2. PTAC GRILLES, EXTERIOR DOOR & WINDOW FRAMES TO MATCH FIRESTONE UNACLAD MEDIUM BRONZE SR.
  3. CONTROL JOINTS - 1/2" CONTROL JOINTS IN EIFS, TYP., PROVIDE CONTROL JOINTS IN MASONRY.
- DESIGN NOTES:**
1. 80% OF THE TOTAL FACADE IS MASONRY (Appx. 22,000 SF)

**BWP**  
**PREMIER**  
**BEST WESTERN**  
Best Western Premier at Aurora, IL  
Drexel Avenue  
Aurora, Illinois

CONTRACTOR  
**PEAK**  
CONSTRUCTION CORPORATION  
Peak Construction Corporation  
1011 E. Touhy Ave. Suite 100 | Des Plaines, IL 60018 | www.peakconstruction.com

ARCHITECT  
**NORR**  
ARCHITECTS PLANNERS  
NORR  
325 N. LaSalle St. | Suite 500 | Chicago, IL 60654  
t 312.424.2400 | f 312.424.2424 | www.norr.com

CIVIL ENGINEER  
**SPACECO INC**  
SPACECO, INC  
9575 W. Higgins Road Rd. Suite 700 | Rosemont, IL 60018 | t 414.351.4117 | www.spacecoinc.com

STRUCTURAL ENGINEER  
**KLINGNER & ASSOCIATES, P.C.**  
Engineers • Architects • Surveyors  
**KLINGNER**  
907 E Ash Road | Columbia, Missouri 65201  
t 573.355.5988 | www.klingner.com

MEP ENGINEER  
**H.F. LENZ COMPANY**  
H.F. Lenz Company  
1407 Scalp Ave  
Johnstown, PA 15904  
www.hflenz.com

REVISIONS / SUBMITTALS

NO.	DATE	ISSUE
	06/27/2018	City of Aurora Comments
	03/28/2018	Issued for Plan Review
	10/26/2017	Issued to Best Western

SHEET TITLE  
**BUILDING ELEVATIONS**  
PROFESSIONAL STAMP | SHEET NUMBER

**A3.02**



# HARMONSIGN

A Division of

## Allen Industries

419-841-6656

www.harmonsign.com

BW Premier, Aurora, IL

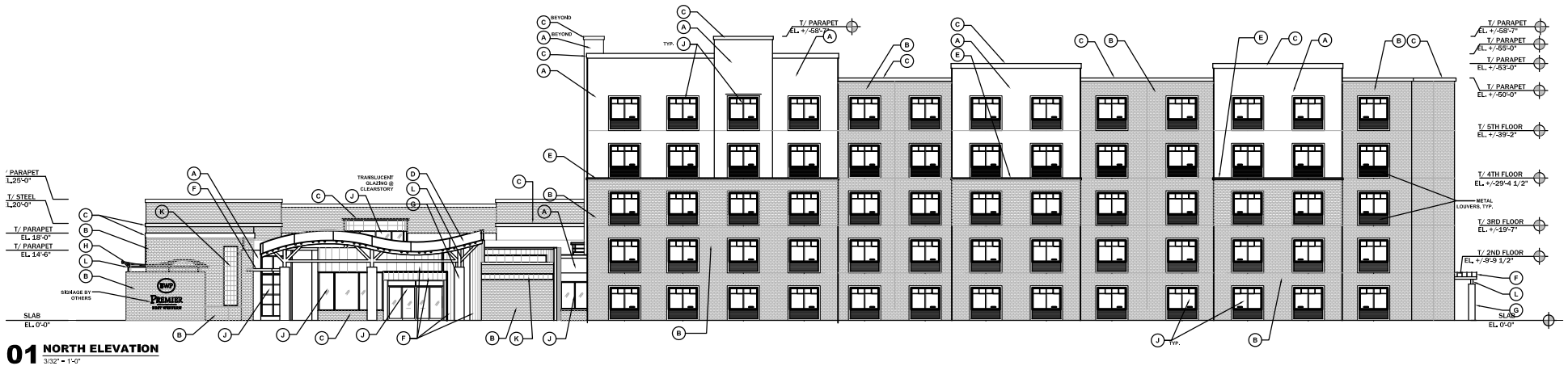
Site Recommendation Book

BWOP006753

BW PREMIER

Drexel Ave.

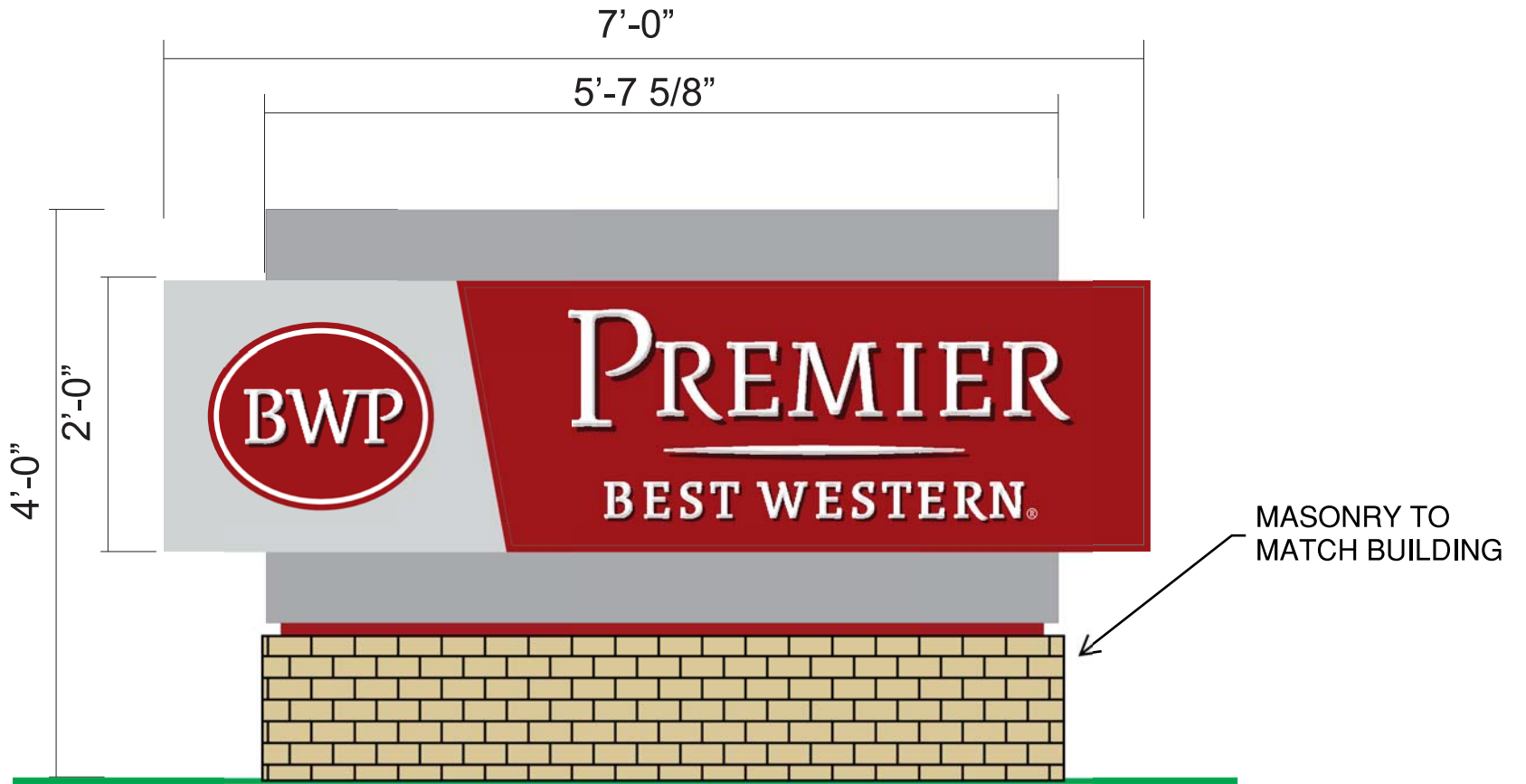
Aurora, IL





N01

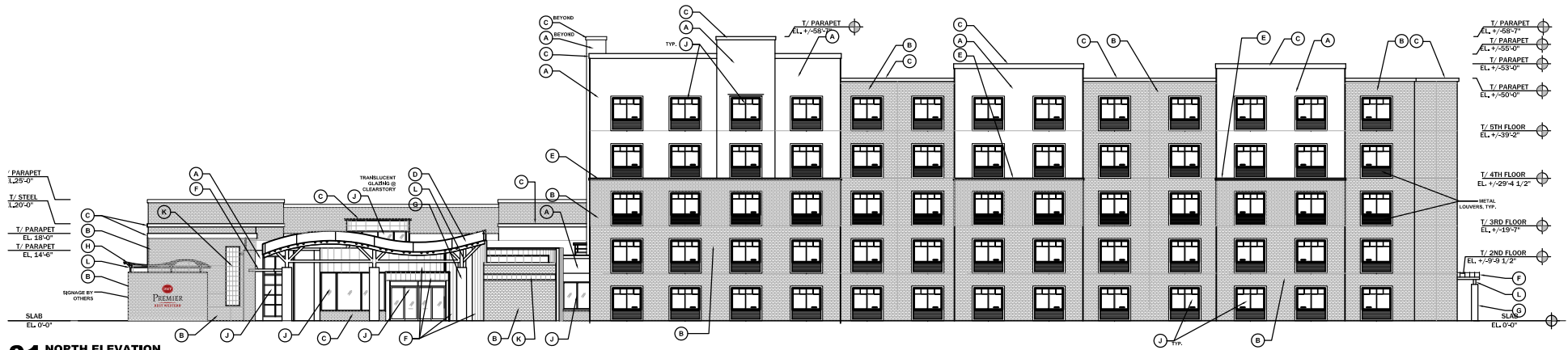
BWP-25H MONUMENT



BWP-25H  
NOT TO SCALE

**N02**

**3 LINE STACKED PREMIER CHANNEL LETTER SET**



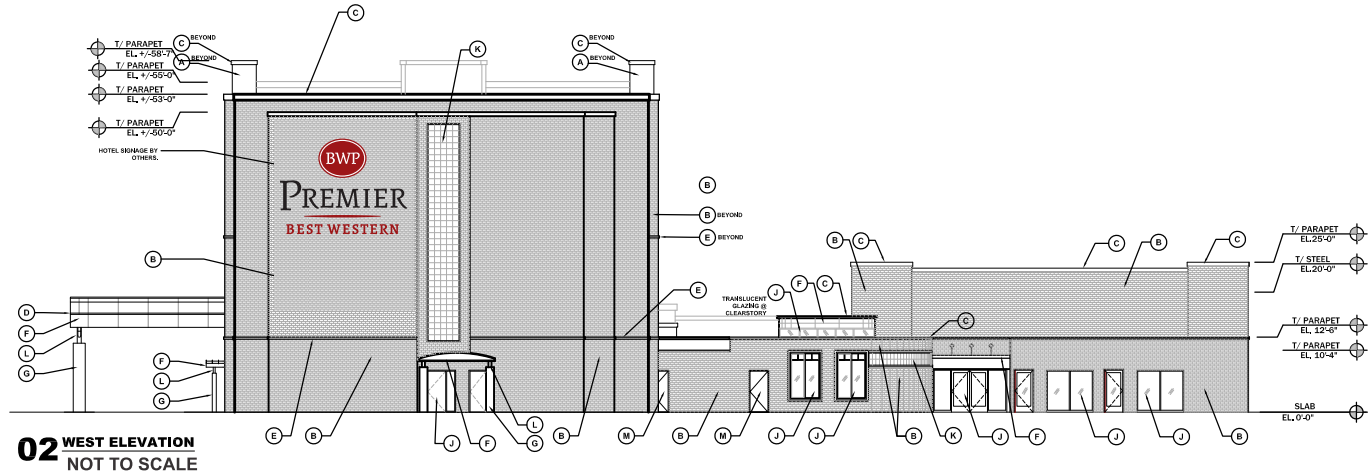
**01 NORTH ELEVATION**  
NOT TO SCALE




3M 3635-222, (black)-ROLLS  
 3M DN00442 (red)-Sheets  
 PANTONE 7628C

**N03**

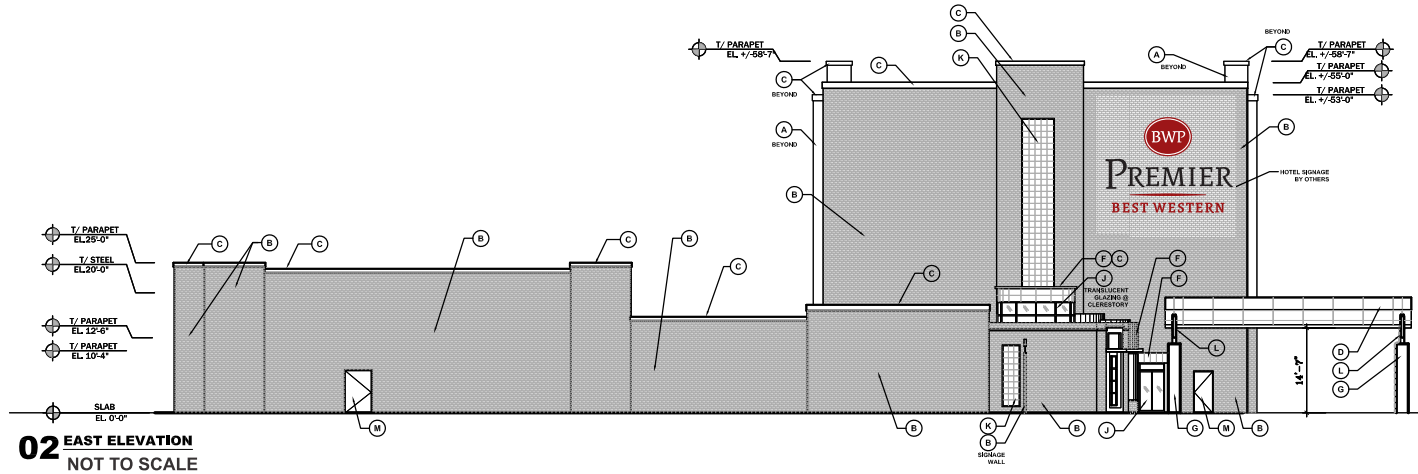
### 3 LINE STACKED PREMIER CHANNEL LETTER SET



 3M 3635-222, (black)-ROLLS  
3M DN00442 (red)-Sheets  
PANTONE 7628C

**N04**

### 3 LINE STACKED PREMIER CHANNEL LETTER SET



3M 3635-222, (black)-ROLLS  
3M DN00442 (red)-Sheets  
PANTONE 7628C