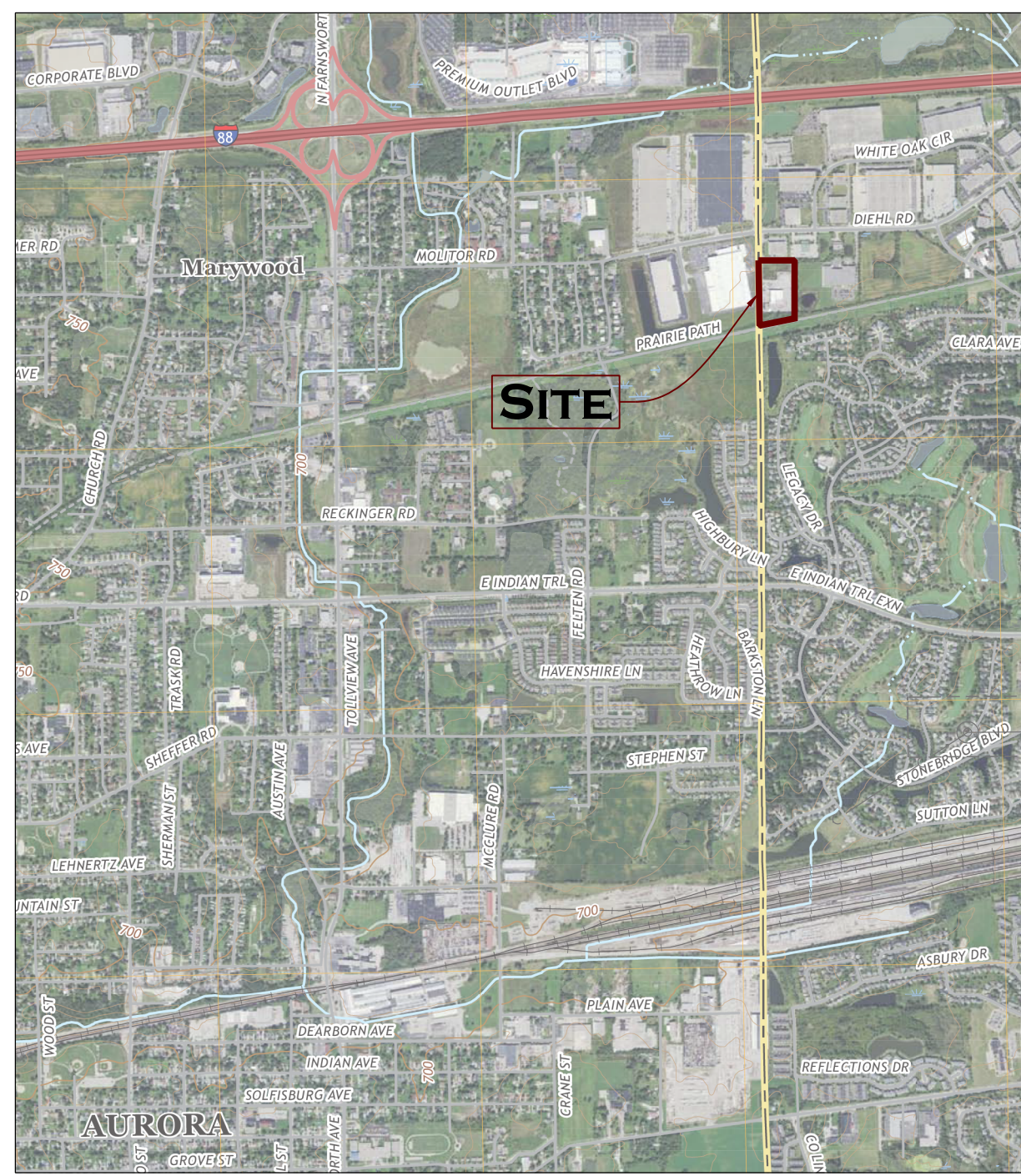
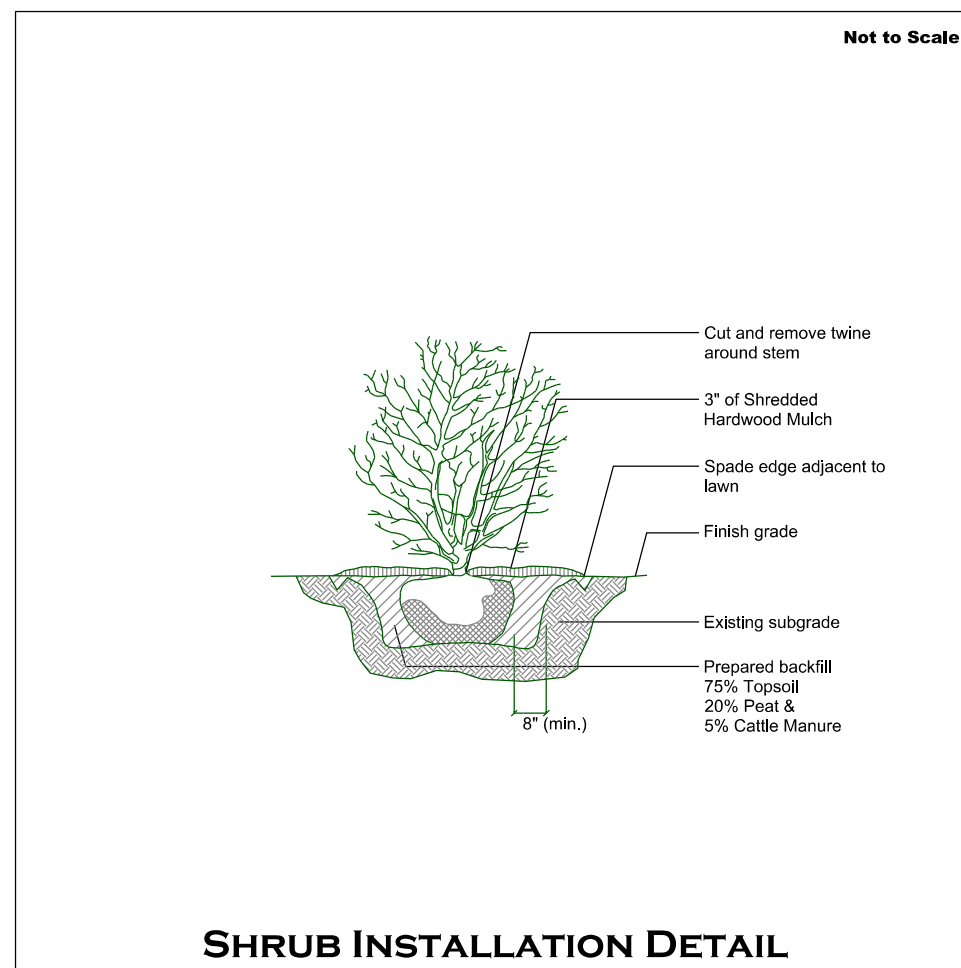


LANDSCAPE PLAN - MADDEN MOLITOR RESUBDIVISION



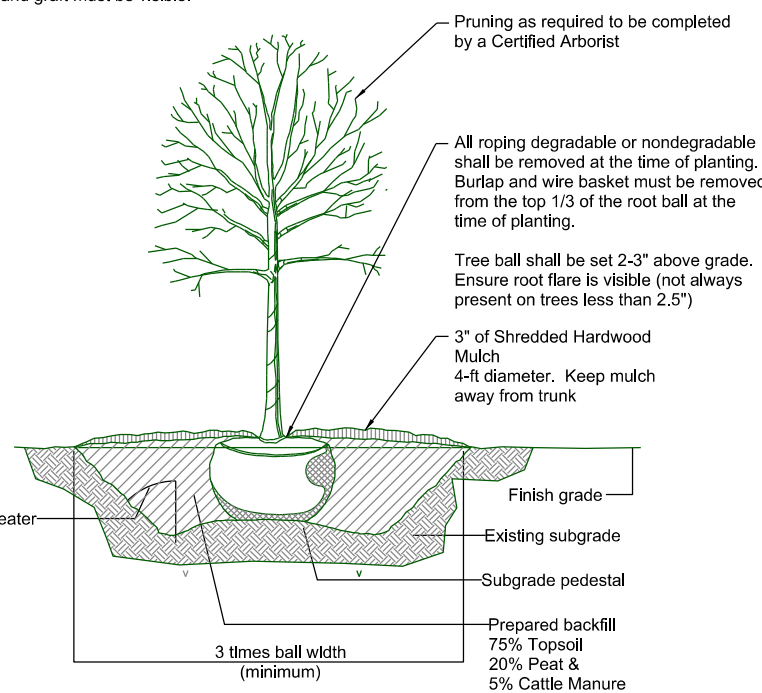
LOCATION MAP
USGS - Aurora North Quad
1" = 2000'

ORI (S)



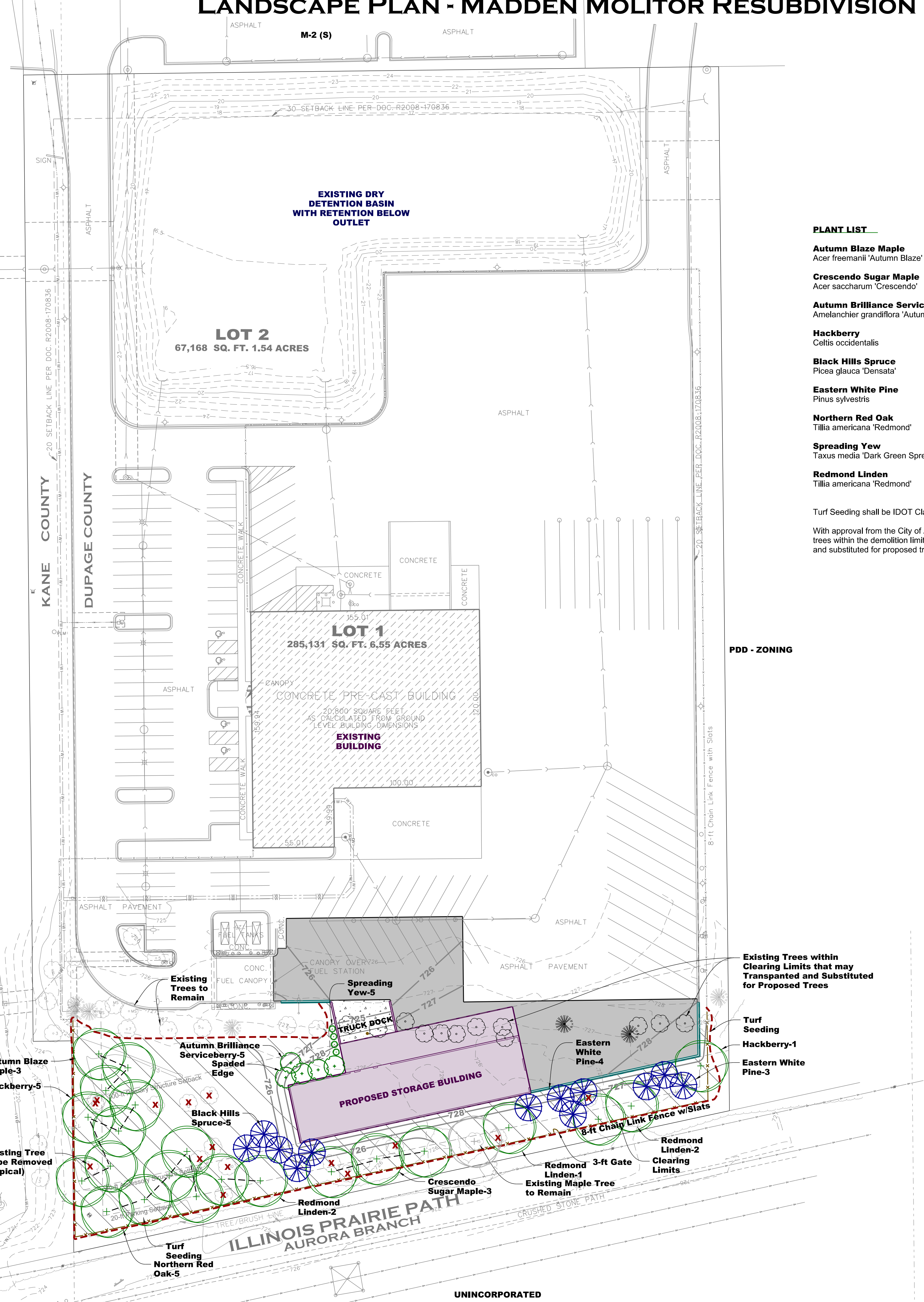
SHRUB INSTALLATION DETAIL

Notes:
1. Tree Staking is not allowed in the City Parkway. If Parkway Tree does not stand vertical, the tree is not acceptable and must be removed and replaced.
2. The tree root flare and graft must be visible.



DECIDUOUS TREE INSTALLATION DETAIL

- LANDSCAPING NOTES:**
- Quantity lists are supplied as a convenience. The Contractor shall verify all quantities.
 - Landscape Contractor shall verify locations of all underground utilities prior to digging. Contact "J.U.L.L.E." (Joint Utility Locating for Excavators) 1-800-882-0123.
 - Planting beds shall be elevated slightly to provide for proper drainage. Rootballs of trees shall be elevated above finished grade as illustrated on installation details. All grading shall provide slopes which are smooth, continuous and have positive drainage in all areas. Should the Landscape Contractor encounter drainage problems which may be detrimental to the growth of the specified plant materials, the Owner shall be notified accordingly, prior to installation.
 - Plant material shall be nursery grown and be either ball and burlapped or container grown. Sizes indicated on plant list represent minimum requirements. The requirements for measurement, branching and ball size shall conform to the "American Standard for Nursery Stock" (latest edition) by the American Association of Nurserymen, Inc. Plant materials for groupings or where symmetry is critical, shall be matched as nearly as possible.
 - Restore all disturbed area with 6" of clean topsoil, Excelsior Blanket and Seed with IDOT Class 1 Seed Mix.



PLANT LIST

PLANT LIST	QTY/Root Form/Size
Autumn Blaze Maple Acer freemanii 'Autumn Blaze'	3/b&b/2.5"
Crescendo Sugar Maple Acer saccharum 'Crescendo'	3/b&b/2.5"
Autumn Brilliance Serviceberry Amelanchier grandiflora 'Autumn Brilliance'	5/b&b/8' clump
Hackberry Celtis occidentalis	6/b&b/2.5"
Black Hills Spruce Picea glauca 'Densata'	5/b&b/6'
Eastern White Pine Pinus sylvestris	7/b&b/6'
Northern Red Oak Tilia americana 'Redmond'	5/b&b/2.5"
Spreading Yew Taxus media 'Dark Green Spreader'	5/b&b/30"
Redmond Linden Tilia americana 'Redmond'	5/b&b/2.5"

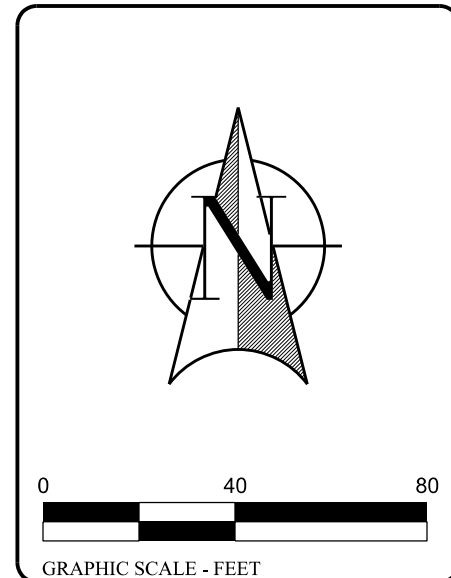
Turf Seeding shall be IDOT Class 1 or sod.
With approval from the City of Aurora, existing quality trees within the demolition limits may be transplanted and substituted for proposed trees.

Landscape Data Table: CTEs Provided

	CTE Value	Count Provided	Total CTEs Provided
Canopy Trees	1	23	23
Evergreen Trees	1/3	12	4
Understory Trees	1/3	5	2
Deciduous Shrubs	1/20	0	0
Evergreen Shrubs	1/20	5	0
Total:		45	29

Landscape Data Table: Planting Material Key
Note: Symbols are blackline for proposed grayscale for existing

Planting Material	Count
Canopy Trees (minimum size 2.5 caliper) Count:	23
Evergreen Trees (minimum size 6 feet) Count:	12
Understory Trees (minimum size 2.5 caliper or 8 feet if 5 multi-stemmed) Count:	5
Evergreen Shrubs (minimum of 18 inches) Count:	5
Deciduous Shrubs (minimum of 18 inches) Count:	0
Ornamental Grasses Count:	0
Perennials Count:	0
Annuals Count:	0
Groundcover Square Footage:	0
Turf (Seeded) Square Footage:	25816
Turf (Sod) Square Footage:	0
Native Prairie Planting Square Footage:	0
Native Wetland Planting Square Footage:	0



WEBSTER, McGRATH & AHLBERG, LTD.
LAND SURVEYING - CIVIL ENGINEERING - LANDSCAPE ARCHITECTURE
Over 100 Years of Service to Clients
207 North Main Street, Aurora, IL 60105
PH: (630) 688-7603 WEB: WWW.WMA.IL.COM
DESIGN FIRM LICENSE NO. 184003101

WMA
Over 100 Years of Service to Clients
207 North Main Street, Aurora, IL 60105
PH: (630) 688-7603 WEB: WWW.WMA.IL.COM
DESIGN FIRM LICENSE NO. 184003101

REV	DATE	REVISION DESCRIPTION
1	01-25-2019	Revised per Aurora review

Section-Township-Range
DuPage: NW¼ 07-38N-09E

JOB # 42296 SURV: JCV
DRAWN: RLS REVIEW: SMR

SCALE: 1"=40' DATE: 11-28-2018
SHEET NAME

LANDSCAPE PLAN
ABBAY PAVING RESUB

SHEET # **1 OF 1**