

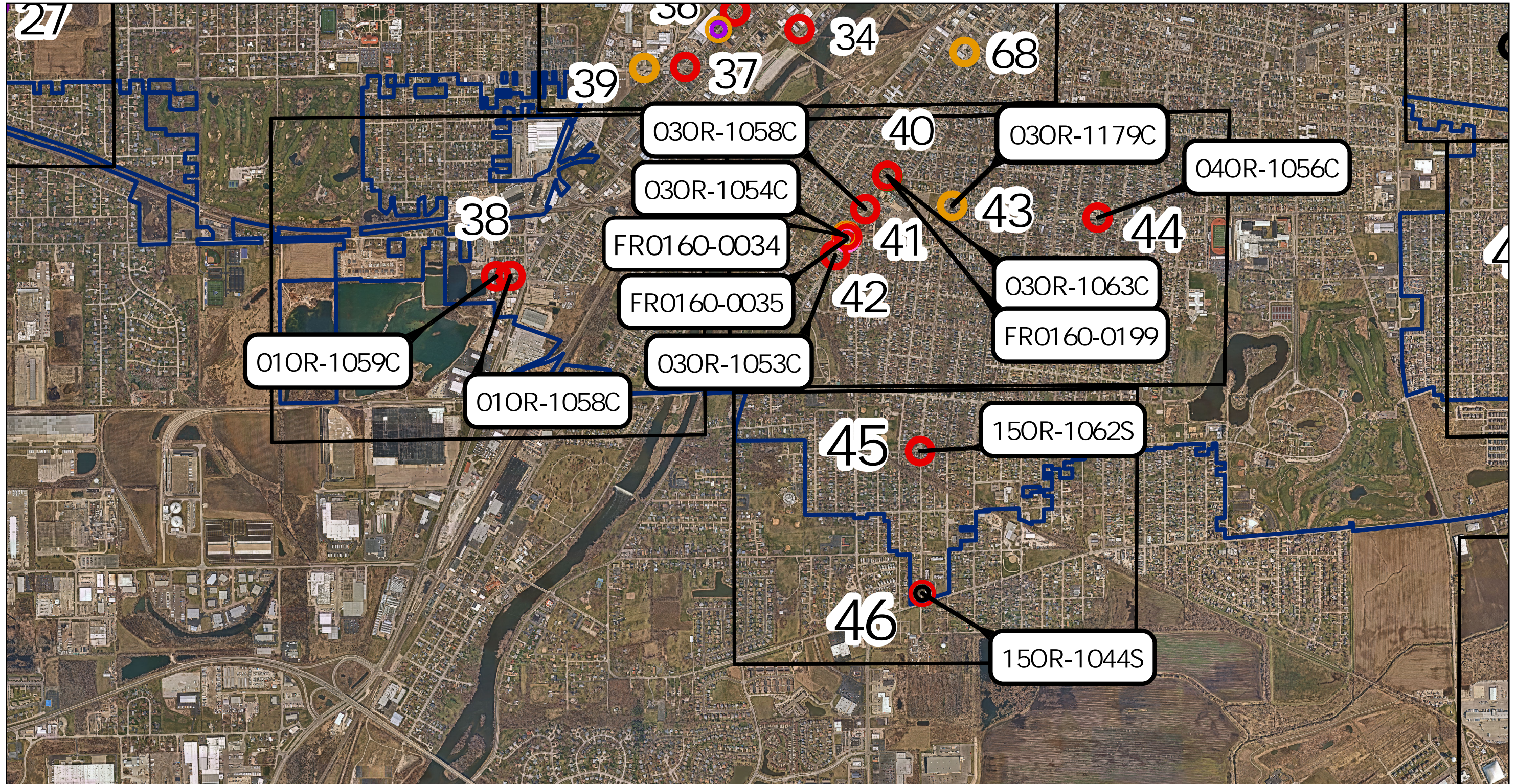


- |  |                                 |  |                          |  |                                     |
|--|---------------------------------|--|--------------------------|--|-------------------------------------|
|  | Remove & Replace Manhole Bench  |  | Full Curtain Grout       |  | Grout Wall Joints                   |
|  | Repair Bench & Channel          |  | Curtain Grout Bottom 18" |  | Chimney Rehabilitation Non-Pavement |
|  | Cement Lining of Interior Walls |  | Grout Cone/Corbel        |  | City of Aurora                      |
|  |                                 |  |                          |  | Exhibit Area                        |

# 2025 Manhole Rehabilitation SE Quadrant


  
 Prepared By:  
 The City of Aurora GIS Div.


  
  
 Not To Scale

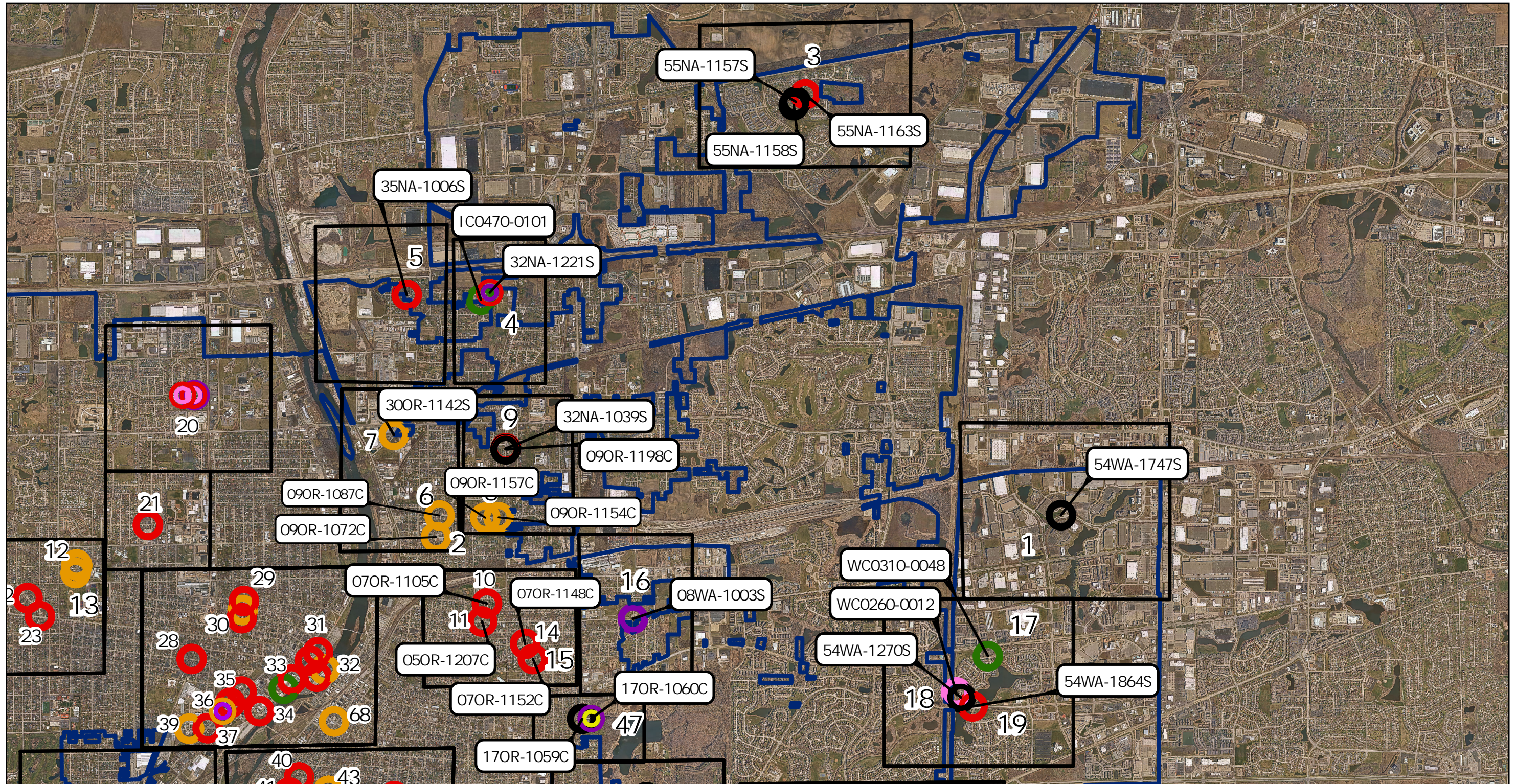


- |                                 |                          |                                     |
|---------------------------------|--------------------------|-------------------------------------|
| Remove & Replace Manhole Bench  | Full Curtain Grout       | Grout Wall Joints                   |
| Repair Bench & Channel          | Curtain Grout Bottom 18" | Chimney Rehabilitation Non-Pavement |
| Cement Lining of Interior Walls | Grout Cone/Corbel        | City of Aurora                      |
|                                 |                          | Exhibit Area                        |

# 2025 Manhole Rehabilitation SW Quadrant


  
 Prepared By:  
 The City of Aurora GIS Div.



  
  
 Not To Scale

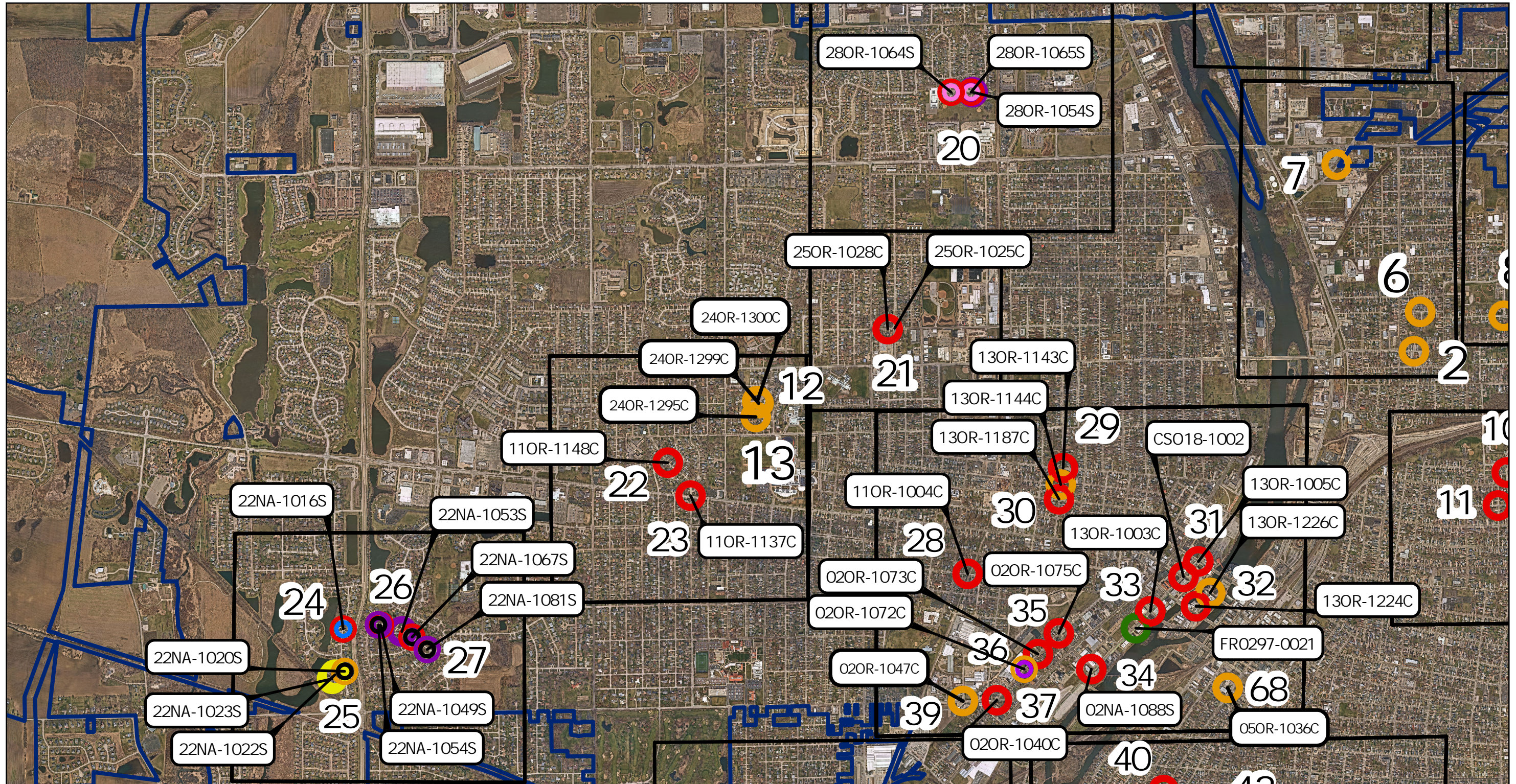


- |                                 |                          |                                     |
|---------------------------------|--------------------------|-------------------------------------|
| Remove & Replace Manhole Bench  | Full Curtain Grout       | Grout Wall Joints                   |
| Repair Bench & Channel          | Curtain Grout Bottom 18" | Chimney Rehabilitation Non-Pavement |
| Cement Lining of Interior Walls | Grout Cone/Corbel        | City of Aurora                      |
|                                 |                          | Exhibit Area                        |

# 2025 Manhole Rehabilitation NE Quadrant


  
 Prepared By:  
 The City of Aurora GIS Div.


  
  
 Not To Scale



- |                                 |                          |                                     |
|---------------------------------|--------------------------|-------------------------------------|
| Remove & Replace Manhole Bench  | Full Curtain Grout       | Grout Wall Joints                   |
| Repair Bench & Channel          | Curtain Grout Bottom 18" | Chimney Rehabilitation Non-Pavement |
| Cement Lining of Interior Walls | Grout Cone/Corbel        | City of Aurora                      |
|                                 |                          | Exhibit Area                        |

# 2025 Manhole Rehabilitation NW Quadrant

  
 Prepared By:  
 The City of Aurora GIS Div.

 Not To Scale