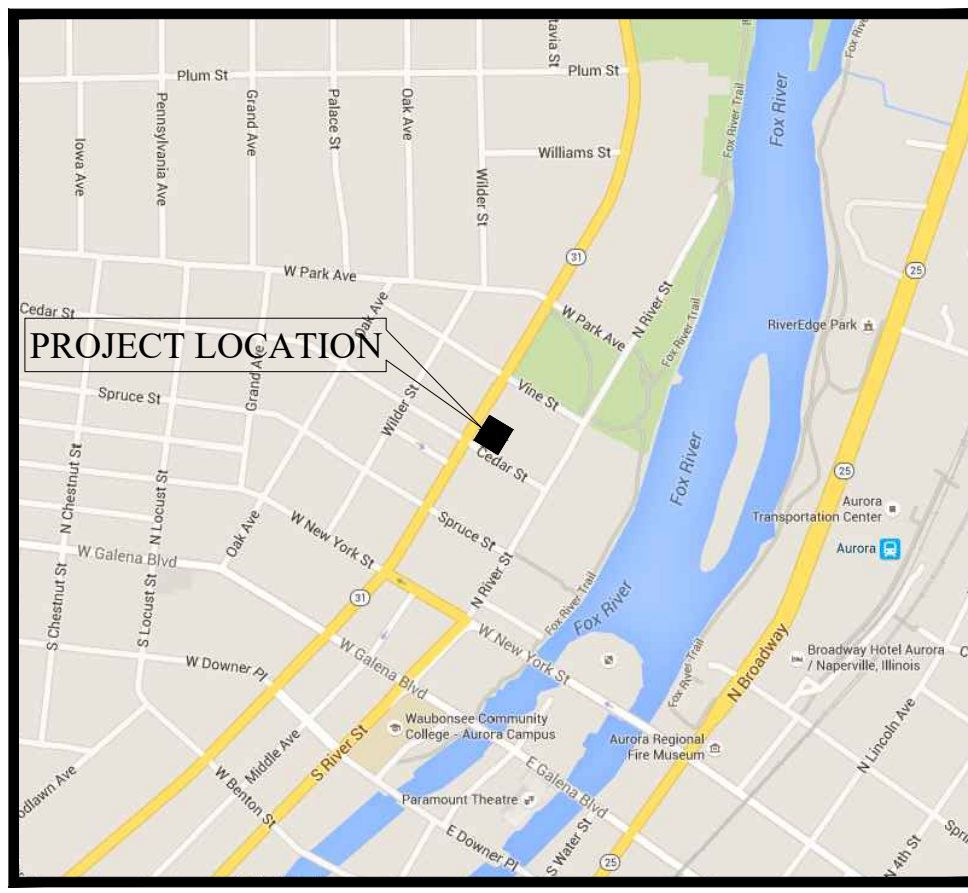
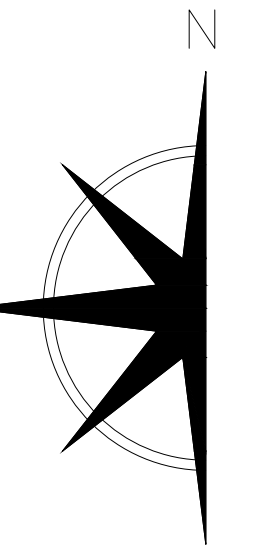


# FINAL PLAN FOR MINISTERIOS ADONAI



VICINITY MAP  
NO SCALE

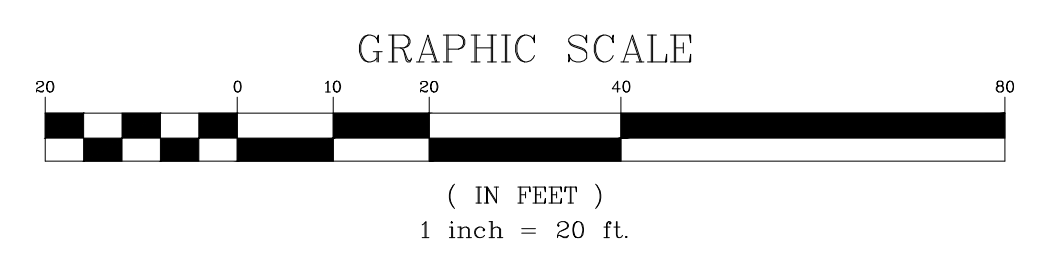


- LEGEND**
- FOUND 7/8" O.D.I.P. UNLESS OTHERWISE NOTED (HELD LOCATION) (CONTROL POINT)
  - CONCRETE MONUMENT
  - ⊕ CROSS IN CONCRETE
  - ⊙ MANHOLE
  - ⊙ STORM STRUCTURE
  - ⊙ SANITARY MANHOLE
  - ⊙ VALVE VAULT
  - ⊙ FIRE HYDRANT
  - ⊙ FLARED END SECTION
  - ⊙ UTILITY POLE
  - ⊙ GUY POLE
  - ⊙ OVERHEAD TRAFFIC SIGNAL
  - ⊙ TRAFFIC SIGNAL MANHOLE
  - ⊙ OVERHEAD WIRES
  - ⊙ GAS METER
  - ⊙ ELECTRIC METER
  - ⊙ TRANSFORMER PAD
  - ⊙ TELEPHONE PEDESTAL
  - ⊙ ELECTRIC PEDESTAL
  - ⊙ TELEPHONE MANHOLE
  - ⊙ CABLE TELEVISION PEDESTAL
  - ⊙ ELECTRIC MANHOLE
  - ⊙ VALVE BOX
  - ⊙ B/W BOX
  - ⊙ SIGN
  - ⊙ BOLLARD POLE
  - ⊙ LIGHT
  - ⊙ LIGHT POLE
  - ⊙ HAND HOLE
  - ⊙ MAILBOX
  - ⊙ GAS MARKER
  - ⊙ ELECTRIC MARKER

- ABBREVIATIONS**
- O.D.I.P. = OUTSIDE DIAMETER IRON PIPE
  - TF = TOP OF FOUNDATION
  - FF = FINISHED FLOOR
  - FES = FLARED END SECTION
  - VCP = VITRIFIED CLAY PIPE
  - DIP = DUCTILE IRON PIPE
  - PVC = POLYVINYL CHLORIDE
  - RCPC = REINFORCED CONCRETE PIPE
  - CMP = CORRUGATED METAL PIPE
  - (R) = RECORD BEARING OR DISTANCE
  - (M) = MEASURED BEARING OR DISTANCE
  - (C) = CALCULATED BEARING OR DISTANCE
  - (D) = DEED BEARING OR DISTANCE
  - A = ARC LENGTH
  - R = RADIUS
  - CH = CHORD
  - CB = CHORD BEARING
  - B.S.L. = BUILDING SETBACK LINE
  - U.E. = UTILITY EASEMENT
  - D.E. = DRAINAGE EASEMENT
  - P.U.E. = PUBLIC UTILITY EASEMENT
  - P.O.C. = POINT OF COMMENCEMENT
  - P.O.B. = POINT OF BEGINNING
  - P.U. & D.E. = PUBLIC UTILITY AND DRAINAGE EASEMENT
  - BC = BACK OF CURB
  - BDC = BACK OF DEEPRESSED
  - FL = FLOW LINE
  - C = CONCRETE
  - F = PAVEMENT
  - G = GRAVEL
  - EW = EDGE OF WALK
  - TW = TOP OF WALL
  - TP = TOP OF PIPE
  - IE = INVERT ELEVATION
  - PL = PROPERTY LINE
  - DS = DOWN SPOUT
  - S.F. = SQUARE FEET

- LINE LEGEND**
- LIMITS OF LAND PER LEGAL DESCRIPTION
  - ADJACENT LAND PARCEL LINE
  - EASEMENT LINE
  - CENTERLINE
  - SETBACK LINE
  - SECTION LINE
  - 400' RADIUS FROM HYDRANT

| Development Data Table: Final Plan  |   |             |   |       |             |
|---|---|-------------|---|-------|-------------|
| Description   | Value   | Unit        | Description   | Value | Unit        |
| a) Tax/Parcel Identification Number(s) (PINs): 15-22-177-004, 15-22-177-005 |   |             | ii) Total Number of Residential Dwelling Units      | 0     | Units       |
|   |   |             | i) Gross Density                                    | 0.00  | /acre       |
|   |   |             | ii) Net Density                                     | 0.00  | /acre       |
| b) Proposed land use(s): Religious Institution/Church                       |   |             | ki) Number of Single Family Dwelling Units          | 0     | Units       |
|   |   |             | i) Gross Density                                    | 0.00  | /acre       |
|   |   |             | ii) Net Density                                     | 0.00  | /acre       |
|   |   |             | iii) Unit Square Footage (average)                  | -     | square feet |
| c) Total Property Size  | 0.7029458   | Acres       | iv) Bedroom Mix                                     | -     |             |
|   | 30,864  | Square Feet |   |       |             |
| d) Total Lot Coverage (buildings and pavement)                              | 28,338  | Square Feet |   |       |             |
|   | 92%   | Percent     |   |       |             |
| e) Open space / landscaping   | 2,326   | Square Feet | v) Number of Single Family Corner Lots              | 0     | Units       |
|   | 8%  | Percent     | vi) Number of Single Family Attached Dwelling Units | 0     | Units       |
| f) Land to be dedicated to the School District                              | 0   | Acres       | i) Gross Density                                    | 0.00  | /acre       |
| g) Land to be dedicated to the Park District                                | 0   | Acres       | ii) Net Density                                     | 0.00  | /acre       |
|   |   |             | iii) Unit Square Footage (average)                  | -     | square feet |
| h) Number of parking spaces provided (individually accessible)              | 42  | spaces      | iv) Bedroom Mix                                     | -     |             |
|   | 42  | spaces      |   |       |             |
|   | perpendicular                                     |             |   |       |             |
|   | parallel  |             |   |       |             |
|   | angled  |             |   |       |             |
|   | handicapped                                       |             | m) Number of Multifamily Dwelling Units             | 0     | Units       |
|   | enclosed  |             | i) Gross Density                                    | 0.00  | /acre       |
|   | ii. bike  |             | ii) Net Density                                     | 0.00  | /acre       |
|   | oracks  |             | iii) Unit Square Footage (average)                  | -     | square feet |
| n) Number of buildings  | 1   | building    | iv) Bedroom Mix                                     | -     |             |
|   | 1   | building    |   |       |             |
|   | ii. Building Square Footage (typical)             | 18,787      | square feet   |       |             |
|   | ii. Square Footage of retail floor area           | 42          | square feet   |       |             |
|   | iv. First Floor Building Square Footage (typical) | 8,162       | square feet   |       |             |



PREPARED FOR:  
MINISTERIOS ADONAI  
303 N. LAKE STREET  
AURORA, IL

PREPARED BY:  
ESM CIVIL SOLUTIONS, LLC  
CIVIL ENGINEERING—LAND ENTITLEMENT—PROJECT FEASIBILITY  
1315 Macom Drive — Suite 205 Naperville Illinois 60154  
o: 630-300-9333 c: 630-624-0520

| REVISIONS |         |                                  |     |      |             |
|-----------|---------|----------------------------------|-----|------|-------------|
| NO.       | DATE    | DESCRIPTION                      | NO. | DATE | DESCRIPTION |
| 1         | 3-21-16 | REVISED PER CITY REVIEW COMMENTS |     |      |             |

FINAL PLAN FOR MINISTERIOS ADONAI  
AURORA, ILLINOIS

|                   |               |              |               |                  |
|-------------------|---------------|--------------|---------------|------------------|
| FILE NAME: MA-AUR | DSGN. BY: MJS | JOB NO: ---- | FLD. BK: ---- | SHEET NO. 1 of 1 |
| DISC NUM: ----    | DRN BY: MJS   | DATE: 3-7-16 | SCALE: 1"=20' |                  |