



Mobile for Public Safety

Intergraph®'s Mobile for Public Safety provides responders in the field with the insight they need to prepare for any incident. This extension of Intergraph's Computer-Aided Dispatch (I/CAD) system makes event details, location, and other data available to field personnel to improve awareness and safety, enable status updates, and ensure accurate communications.

Mobile for Public Safety's "patrol dashboard" is a convenient place to see the nearest events, view how many calls are associated with your agency or dispatch group, run license plate searches, and perform other common queries – all from one screen. This simplifies workflows and improves productivity for officers on the go.

In support of person-level tracking, Mobile for Public Safety lets you add and remove mobile devices, which are now visible on the CAD map. You can pinpoint responders as part of a unit or independently, all on the map. With more information on responder locations, you can better manage resources and enhance safety throughout the incident life cycle.

With Mobile for Public Safety, you can extend command and control to the field, speeding response and increasing public confidence.

FEATURES AND BENEFITS

User Experience

- **Situational Awareness** – Intergraph's mobile technology extends dispatch capabilities into the field, providing insight into unfolding situations. With CAD 9.3 and the appropriate infrastructure, you can even receive text messages and multimedia associated with incidents.
- **Easy-to-Navigate User Interface** – Our software provides agency-specific templates designed for the unique needs of police and fire personnel.

- **Flexible Map Options** – Recent enhancements let you orient the map in your direction of travel, and brighten or dim the map for more comfortable viewing in a variety of lighting conditions.
- **Touch-screen Technology** – An intuitive touch-screen interface makes our solution easy to learn and use.
- **Microsoft® Bing and Google Maps Support** – With appropriate licensing, you can display Google Maps or Microsoft Bing maps, in addition to the Mobile for Public Safety map. This is helpful when responding to events outside your jurisdiction, or when access to additional data layers, such as aerial or oblique imagery, is useful.
- **Microsoft Windows® 8 Surface Pro Support** – Now you can use Mobile for Public Safety on Microsoft Windows 8.1 Surface Pro tablets, in addition to traditional laptops.
- **Automatic Vehicle Location Logging** – Our latest software creates a GPS folder to store local GPS data, and supports data replay using Tracker Playback.

Productivity and Safety

- **Person-level Tracking** – With CAD 9.3, you can view each responder's location, independently or as part of a unit, on the CAD map. This allows you to assess risks in real time and take immediate action.
- **Real-time Content Updates** – Remote Content Management pushes updates to the Mobile for Public Safety client, simplifying system administrator tasks and keeping versions current.
- **Reduced Radio Traffic** – Status updates using mobile technology ensure dispatchers have up-to-date status, so they can send the closest available unit without tying up radio bandwidth.

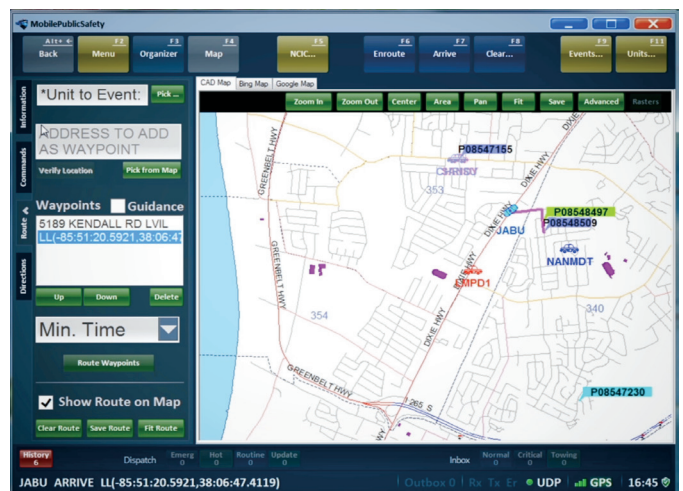
- **Optional Field Reporting** – Integration with Intergraph’s field reporting software allows you to produce accurate and timely reports from the scene of an incident.
- **Working During Connectivity Loss** – We preserve your information in times of temporary loss of network connectivity. Disconnected messages are queued up and delivered when connection is regained, preventing data loss and enabling you to continue working.
- **Enhanced Towing Support** – Our CAD towing tools enable faster access to available resources and quicker fulfillment of towing requirements.

Flexibility and Privacy

- **Integrated Pictometry Window** – An integrated pictometry display provides easy viewing and analysis of important location information.
- **Enhanced Privacy** – A range of security tools ensure your communications remain confidential.



The patrol dashboard makes common functions accessible on one easy-to-use screen.



Mobile for Public Safety makes event details, location, and other data available to field personnel.

ABOUT INTERGRAPH

Intergraph helps the world work smarter. The company’s software and solutions improve the lives of millions of people through better facilities, safer communities and more reliable operations.

Intergraph Process, Power & Marine (PP&M) is the world’s leading provider of enterprise engineering software enabling smarter design and operation of plants, ships and offshore facilities. Intergraph Security, Government & Infrastructure (SG&I) is the leader in smart solutions for emergency response, utilities, transportation and other global challenges.

For more information, visit www.intergraph.com.

Intergraph is part of Hexagon (Nordic exchange: HEXA B; www.hexagon.com), a leading global provider of design, measurement, and visualization technologies that enable customers to design, measure and position objects, and process and present data.

