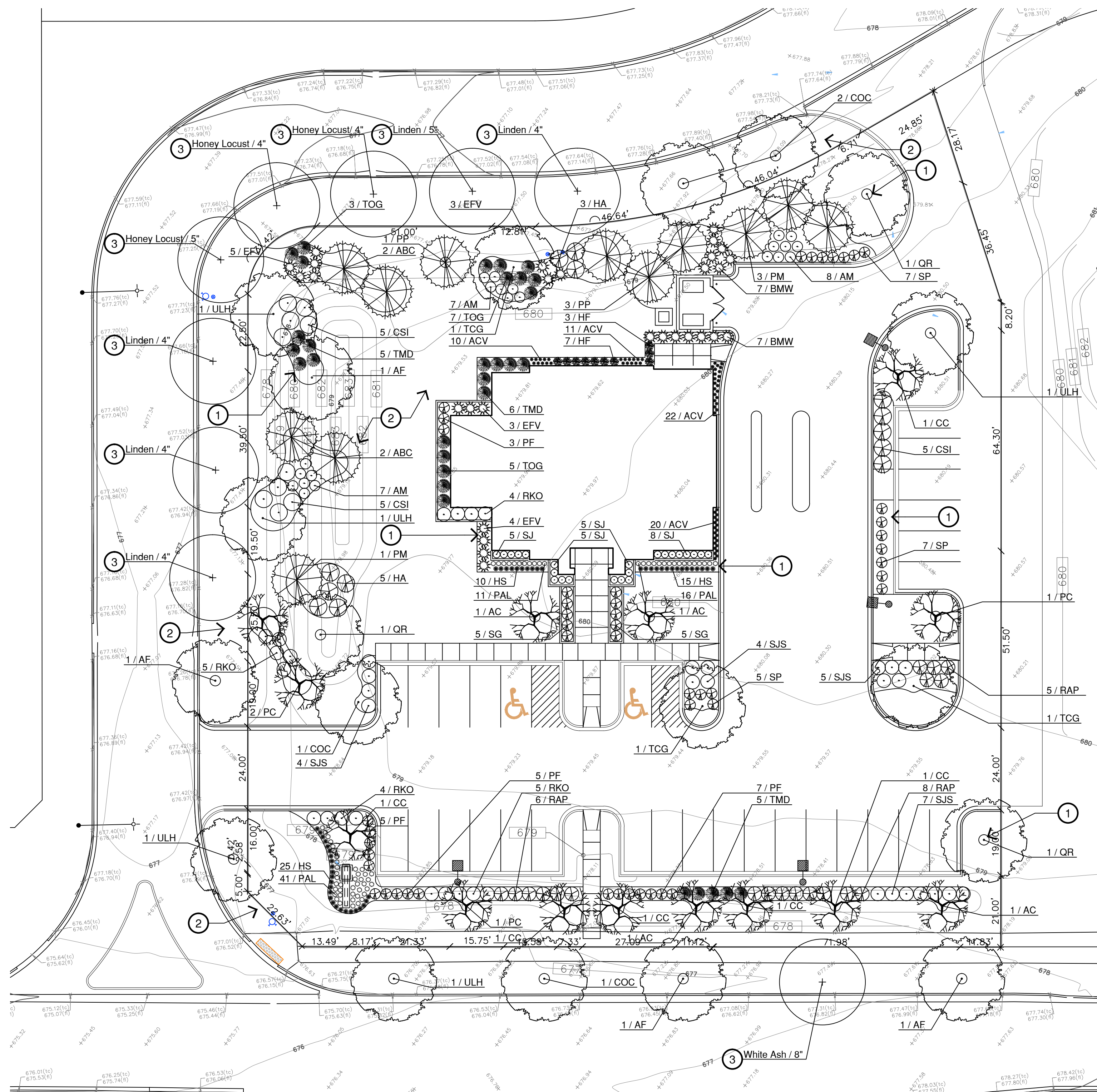


# LANDSCAPE PLAN FOR AURORA BANK & TRUST



Symbol	Description	Value	Unit
<b>Landscape Plan for Aurora Bank &amp; Trust</b>			
<b>a) Total Canopy Trees 29 Count</b>			
	Acer: freemani 'Autumn Blaze'	10%	Percent of Canopy Trees
	2.5" Caliper at Installation (inches)		
	Celtis occidentalis: 'Chicagoland'	17%	Percent of Canopy Trees
	2.5" Caliper at Installation (inches)		
	Gleditsia tricanthos	10%	Percent of Canopy Trees
	2.5" Caliper at Installation (inches)		
	Fraxinus americana	4%	Percent of Canopy Trees
	2.5" Caliper at Installation (inches)		
	Quercus: rubra	14%	Percent of Canopy Trees
	2.5" Caliper at Installation (inches)		
	Tilia: cordata 'Greenspire'	28%	Percent of Canopy Trees
	2.5" Caliper at Installation (inches)		
	Ulmus: 'Homestead'	17%	Percent of Canopy Trees
	2.5" Caliper at Installation (inches)		
<b>b) Total Evergreens 12 Count</b>			
	Abies: concolor	33%	Percent of Evergreens
	6' Height at Installation (feet)		
	Pseudotsuga: menziesii	33%	Percent of Evergreens
	6' Height at Installation (feet)		
	Picea: pungens	33%	Percent of Evergreens
	6' Height at Installation (feet)		
<b>c) Total Understory Trees 12 Count</b>			
	Amelanchier: canadensis	33%	Percent of Understory Trees
	6' Or Multi-stemmed Height at Installation (feet)		
	Cercis: canadensis	33%	Percent of Understory Trees
	6' Or Multi-stemmed Height at Installation (feet)		
	Pyrus: calleryana 'Chanticleer'	33%	Percent of Understory Trees
	2.5" Caliper at Installation (inches)		
	6' Or Multi-stemmed Height at Installation (feet)		
<b>d) Total Deciduous Shrubs 174 Count</b>			
	Aronia: melanocarpa	13%	Percent of Shrubs
	36" Height at Installation (inches)		
	Cornus: cericea 'santii'	9%	Percent of Shrubs
	36" Height at Installation (inches)		
	Hydrangea: arborescens	5%	Percent of Shrubs
	36" Height at Installation (inches)		
	Potentilla: fruticosa	11%	Percent of Shrubs
	24" Height at Installation (inches)		
	Ribes: alpinum 'Green Mound'	11%	Percent of Shrubs
	24" Height at Installation (inches)		
	Rosa: 'Knockout'	11%	Percent of Shrubs
	24" Height at Installation (inches)		
	Spiraea: bumalda 'Gumball', japonica 'Little Princess', japonica 'Shirobana'	30%	Percent of Shrubs
	18" - 24" Height at Installation (inches)		
	Syringa: patula 'Miss Kim'	10%	Percent of Shrubs
	24" Height at Installation (inches)		
	Thuja: occidentalis 'Globe'	24%	Percent of Shrubs
	24" Height at Installation (inches)		
<b>e) Total Evergreen Shrubs 55 Count</b>			
	Buxus: microphylla 'Wintergreen'	25%	Percent of Shrubs
	24" Height at Installation (inches)		
	Euonymus: fortunei vegetus	27%	Percent of Shrubs
	24" Height at Installation (inches)		
	Taxus: x media 'Densiflora'	29%	Percent of Shrubs
	24" Height at Installation (inches)		
	Thuja: occidentalis 'Globe'	19%	Percent of Shrubs
	24" Height at Installation (inches)		
<b>f) Ornamental Grasses 0 Count</b>			
	genus #1: List Potential Species	Size	
	genus #2: List Potential Species	Size	
	genus #3: List Potential Species	Size	
<b>f) Perennials 163 Count</b>			
	Astilbe: chinensis 'Visions'	1 Gal	Size
	Hemerocallis: 'Stella-de-Oro'	1 Gal	Size
	Hosta: fortunei 'Francee'	1 Gal	Size
	Perovskia: atriplicifolia 'Little Spire'	1 Gal	Size
<b>g) Annuals 0 Count</b>			
	genus #1: List Potential Species	Size	
	genus #2: List Potential Species	Size	
	genus #3: List Potential Species	Size	
<b>h) Groundcover 0 Count</b>			
	genus #1: List Potential Species	Size	
	genus #2: List Potential Species	Size	
	genus #3: List Potential Species	Size	

## Plant List & Key

Key	Botanical Name (Common Name)	Size	Quantity
<b>Shade Trees</b>			
AF	Acer freemani 'Autumn Blaze' (Autumn Blaze Red-Silver Maple)	2 1/2"	3
COC	Celtis occidentalis 'Chicagoland' (Chicagoland Hackberry)	2 1/2"	5
OR	Quercus rubra (Red Oak)	2 1/2"	4
TCG	Tilia cordata 'Greenspire' (Greenspire Linden)	2 1/2"	3
ULH	Ulmus x 'Homestead' (Homestead Elm)	2 1/2"	5
<b>Evergreen Trees</b>			
ABC	Abies concolor (Concolor Fir)	6'	4
PM	Pseudotsuga menziesii (Douglas Fir)	6'	4
PP	Picea pungens (Colorado Spruce)	6'	4
<b>Ornamental Trees</b>			
AC	Amelanchier canadensis (Shadblow Serviceberry)	8'	4
CC	Cercis canadensis (Eastern Redbud)	8'	4
PC	Pyrus calleryana 'Chanticleer' (Chanticleer Callery Pear)	2 1/2"	4
<b>Deciduous Shrubs</b>			
AM	Aronia melanocarpa (Black Chokeberry)	36"	22
CSI	Cornus sericea 'santii' (santii Dogwood)	36"	15
HA	Hydrangea arborescens (Smooth Hydrangea)	36"	8
PF	Potentilla fruticosa (Potentilla)	24"	20
RAP	Ribes alpinum 'Green Mound' (Green Mound Alpine Currant)	24"	19
RKO	Rosa 'Knockout' (Knockout Rose)	24"	18
SG	Spiraea bumalda 'Gumball' (Gumball Spiraea)	24"	10
SJ	Spiraea japonica 'Little Princess' (Little Princess Spiraea)	18"	23
SJS	Spiraea japonica 'Shirobana' (Shirobana Spiraea)	24"	20
SP	Syringa patula 'Miss Kim' (Miss Kim Dwarf Lilac)	24"	19
<b>Evergreen Shrubs</b>			
BMW	Buxus microphylla 'Wintergreen' (Wintergreen Boxwood)	24"	14
EFV	Euonymus fortunei vegetus (Bigleaf Wintercreeper)	24"	15
TMD	Taxus x media 'Densiflora' (Dense Angliap Yew)	24"	16
TOG	Thuja occidentalis 'Globe' (Globe Arborvitae)	24"	10
<b>Perennials &amp; Groundcovers</b>			
ACV	Astilbe chinensis 'Visions' (Visions False Spirea)	1 GAL.	63
HS	Hemerocallis 'Stella-de-Oro' (Stella-de-Oro Daylily)	1 GAL.	31
HF	Hosta fortunei 'Francee' (Francee Hosta)	1 GAL.	18
PAL	Perovskia atriplicifolia 'Little Spire' (Little Spire Russian Sage)	1 GAL.	53

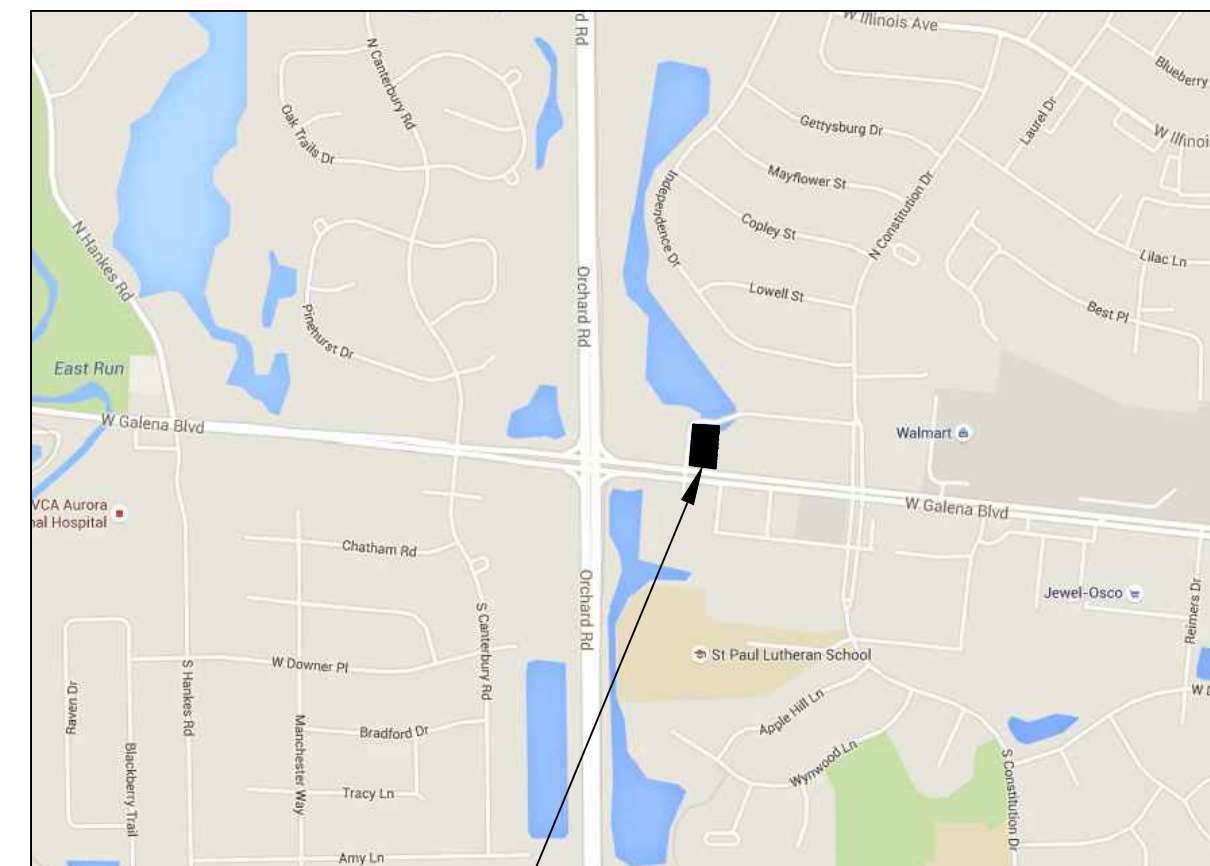
Note: The quantities listed above are for reference only. The Contractor will be responsible for confirmation of all quantities, based on the plant materials shown and identified on the Landscape Plans.

Description	Value	Unit
<b>Landscape Plan for Aurora Bank &amp; Trust</b>		
a) Tax/Parcel Identification Number(s) (PINs): 15-19-126-021		
b) Total Property Size	1.09	Acres
	47,599	Square Feet
c) Total Lot Coverage (buildings and pavement)	26,572	Square Feet
	56%	Percent
d) open space / landscaping	21,027	Square Feet
	44%	Percent
e) Total Street Frontage (existing and proposed)	566	Linear Footage
f) Building Foundation perimeter (Typical)	297	Linear Footage
g) Total Perimeter Yard	818	Linear Footage
h) Buffer Yard	Linear Footage	Linear Footage
i) Neighborhood Border	188	Linear Footage
j) Total High-water Line for all Stormwater Detention/Retention Facilities	-	Linear Footage of Wet Bottom
k) Number of Surface Parking Lot Spaces	29	spaces
l) Total Number of Residential Dwelling Units	-	units
m) Total Number Single Family Corner Lots	-	units

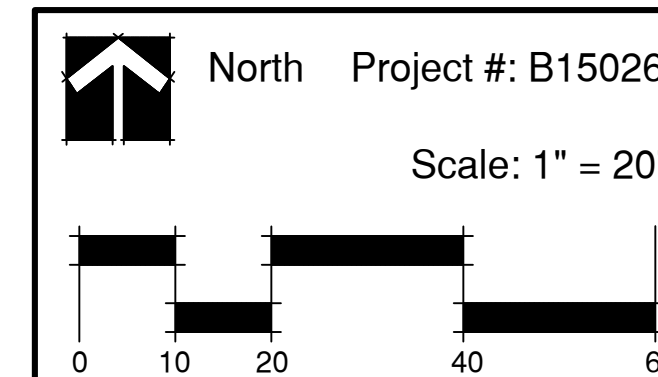
Area	Required	Proposed
Street Trees: (3 Trees / 100 LF)	17	17
Perimeter Yard: (2 CE / 100 LF)	17	17
Parking Lot Islands: (1.5 CE / Island)	3	3
Foundation Plantings: (1 CE / 100 LF)	3	3

### Notes

- Remove all turf encountered within bed limits and haul from site. Furnish and install 3" minimum layer of double shredded hardwood bark mulch in all planting beds and tree rings.
- Fine grade, fertilize and seed all disturbed areas using Common Area bluegrass seed. (See Specifications)
- Existing Tree to Remain. Protect during Construction.



Project Site



**BDG**  
**Brusseau Design Group, LLC**  
 Landscape Architecture • Land Planning • Recreational Planning & Design  
 2675 Pratum Avenue, Hoffman Estates, IL 60192

TITLE: <b>Landscape Plan for Aurora Bank &amp; Trust</b>	
DATE: <b>06/24/2015</b>	PROJECT #: <b>2015-026</b>
PRINCIPAL: <b>BFG</b>	SHEET: <b>L1</b>
PROJECT MGR: <b>JBL</b>	DRAWN BY: <b>JBL</b>
ISSUED FOR REVIEW: <b>6/23/15</b>	DATE: <b>6/23/15</b>



**charles vincent george**  
**ARCHITECTS**

1245 E. Diehl Rd. Suite  
 Naperville, Illinois 60563  
 | 630.357.2023 F | 630.357.2662  
 cvgarchitects.com

### STAMP:

EXPIRES 11/30/2016  
 IL ARCHITECTURAL DESIGN FIRM NO.: 184-000544  
 DATE: \_\_\_\_\_

**COPYRIGHT:**  
 THE ATTACHED DRAWINGS ARE COPYRIGHTED AND ARE FOR INFORMATIONAL PURPOSES ONLY. CHARLES VINCENT GEORGE ARCHITECTS, INC. HAS NO MEANS OF ENSURING THAT THE DRAWINGS WILL NOT, OR HAVE NOT BEEN AFFECTED BY ANY FILE CONVERSION OR PRINTING PROCESS AND CANNOT THEREFORE BE RESPONSIBLE FOR THEIR CONTENTS. IF THE DRAWINGS ARE TO BE USED BY A THIRD PARTY FOR ANY PURPOSE, THE THIRD PARTY SHALL BE SOLELY RESPONSIBLE FOR ENSURING THE ACCURACY OF THE INFORMATION CONTAINED THEREIN. ALL UNAUTHORIZED PRINTING AND/OR DISTRIBUTION IS STRICTLY PROHIBITED WITHOUT PRIOR WRITTEN CONSENT FROM CHARLES VINCENT GEORGE ARCHITECTS, INC.

### ISSUE AND/OR REVISIONS:

NO.	DATE	DESCRIPTION
1	7/27/15	Per City Comments

### PROJECT:

ST. CHARLES BANK & TRUST  
 9700 HIGGINS ROAD, ROSEMONT, IL 60018  
 NEW BRANCH BANK:  
**AURORA BANK & TRUST**  
 2287 WEST GALENA BLVD.  
 AURORA, ILLINOIS 60506

L2015 PROJECT/150615026 WINTRUST BANK LANDSCAPE DRAWINGS/LANDSCAPE PLAN 2015/07/06 11:58 AM



# Specifications

## Section 32 92 00 - Turf and Grasses

**1.0 General Description**  
This work shall consist of cultivating and fine grading of topsoil, rock and debris removal, fertilizing and seed installation or sod installation.

**1.1 Submittals**  
The Contractor must submit fertilizer mixture tags, seed mixture tags or sod specifications from the sod nursery for approval by the Landscape Architect or the Owner's Representative. Products must be approved by the Landscape Architect or the Owner's Representative prior to any installation.

**1.2 Product Delivery, Storage and Handling**  
All sod, seed, fertilizer and other materials to be used for the installation must be protected from weather, damage during transit and vandalism while stored at the project site. Any materials that have been damaged by any of the above will not be acceptable for use on the project.

**1.3 Protection**  
The Contractor will be responsible for the protection of any seeded or sodded areas until the final acceptance of the installation. The Contractor may only use barricades, devices or products that are acceptable to the Owner or the Landscape Architect for protection of seeded or sodded areas.

**2.0 Products**

A. Water: The Contractor will be required to supply water including all meters, hoses and connections, etc. necessary to water the turf areas.

B. Sod:

- All sod used for this project must be blended Blue Grass as specified below, with no more than 5% weeds or other grasses. The sod must be free of rocks, stones or debris and must have a 1" minimum thickness of soil and an adequate root system. Sod must be cut into one (1) square yard sections. Big roll sod in widths of 30" are also acceptable.
- All sod used must contain equal percentages of at least four different varieties of the following:
  - Midnight
  - Columbia
  - NuGlade
  - Rugby II
  - Bluemoon
  - Nubue
- All sod must be supplied by growers within a fifty (50) mile radius of the project site. The sod must be delivered to the project site on skids or pallets. Dumping of sod from any vehicle is not permitted. Damaged sod or any sod that appears to be dry or in decline will not be accepted. All sod must be planted within forty-eight (48) hours after it has been harvested.

C. Seed:

- Grass seed mixture must be composed of the following seeds mixed in proportions by weight, with the following minimum percentages of purity and germination:

General or Common Areas:			
Proportion By Weight	Name of Grass	Purity Percent	Germination
80%	Blended Blue Grass (Midnight, Columbia, NuGlade, Rugby II, or Bluemoon) Use at least 4 varieties.	90%	80%
20%	Perennial Ryegrass (Roadrunner Manhattan III, Charger II And Catalina) 10%	98%	90%

Athletic Fields:			
Proportion By Weight	Name of Grass	Purity Percent	Germination
15%	Barfil Kentucky Blue	98%	85%
15%	Touchdown Kentucky Blue	98%	85%
15%	Challenger Kentucky Blue	98%	85%
15%	Rugby Kentucky Blue	97%	80%
10%	Limousine Kentucky Blue	98%	85%
30%	Alliance Ryegrass	98%	90%

D. Fertilizer:

- Commercial fertilizers must contain the following percentages by weight:  
Prior to Seeding 10-18-18 with 30% Nutralene

Nitrogen	10%
Phosphoric Acid	18%
Potash	18%

- After Seeding 25-0-10

Nitrogen	25%
Phosphoric Acid	0%
Potash	10%
Sulfur	10%

2. All fertilizer must be delivered to the project site in unopened bags, which include identification tags or labels.

## Section 32 92 00 - Turf and Grasses, continued

**3.0 Execution**

A. The Contractor must inspect all final grading prepared by the Grading Contractor and request approval from the Landscape Architect or the Owner's Representative to begin seed or sod installation. Any disparities noted in the final topsoil grades must be reviewed by the Landscape Architect and resolved prior to the commencement of seed or sod installation.

B. Fine Grading:

- All areas to be seeded or sodded shall be prepared by pulverizing the soil to a minimum depth of three (3) inches. This process shall include rototilling and/or disking, and raking and dragging the soil to produce a smooth bed for seeding or sod installation. Regardless of whether the area will receive seed or sod, the soil preparation must be consistent. All rocks and other debris 3/4 inch in diameter or greater must be removed from the surface prior to seeding or sodding.
- Should previously conditioned soil become compacted by weather, construction equipment or other means, the area shall be re-conditioned as indicated above.

**3.1 Installation**

A. Planting Seasons:

- Seeded Areas: Seed may be installed from March 15th through May 14th and from August 15th through October 1st.
- Sodded Areas: Sod may be installed from March 1st through June 15th and from August 15th through November 1st.
- If requested in writing and approved by the Landscape Architect or the Owner's Representative, the planting seasons listed above may be extended due to favorable weather conditions.

B. Fertilizing:  
Fertilizer must be mechanically broadcast or spread and tilled into the top three (3) inches of soil at the rate of 5.5 lbs. per 1,000 square feet or 240 lbs/acre.

C. Seeding:  
Common Area and Athletic Field Seed shall be mechanically applied at the rate of 5.0 lbs. per 1,000 square feet of area or 220 lbs/acre. The seed shall be spread evenly and lightly raked into the soil.

D. Sodding:

- Sod shall be installed tightly together with the joints on the long dimension of the sod staggered in a fashion equal to running bond brick.
- After the sod is laid, it must be watered thoroughly and rolled if necessary to adhere the sod to the soil.

**3.2 Maintenance, Clean-Up and Acceptance**

A. Maintenance: The Contractor must provide maintenance of seeded or sodded areas until the date of final acceptance, including the following:

- Seeded Areas:
  - Watering of turf.
  - Re-filling with topsoil and the overseeding of washed out or rutted areas.
  - Re-fertilizing with a commercial fertilizer at the rate of 5.5 lbs. per 1,000 square feet (240 lbs/acre) on one occasion after sufficient germination.
  - Overseeding any turf areas that haven't germinated sufficiently or which fail to support a uniform and consistent stand of grass. Any such areas must be re-seeded with the similar seed mixture and rate initially applied. Re-seeding must continue until all turf areas are covered with a uniform and consistent stand of grass. A uniform and consistent stand of turf will be defined as turf that is full and even with no bare areas.
  - All seeded areas must be maintained as noted above for a period of Sixty (60) days after installation or until a uniform and consistent stand of grass has been established.
- Sodded Areas:
  - Watering of turf.
  - Re-fertilizing with a commercial fertilizer at the rate of 5.5 lbs. per 1,000 square feet (240 lbs/acre) on one occasion.
  - Replacement of sod, which fails to grow or is in a state of decline using the same sod mixture as previously installed.
  - All sodded areas must be maintained as noted above for a period of Thirty (30) days after installation or until a uniform and consistent stand of grass has been established. A uniform and consistent stand of turf will be defined as turf that is full and even with no bare areas.

B. Clean Up:

- All debris generated by this work shall be removed from the site.
- All pavements and walks must be clean and washed of any mud or heavy concentration of soil.
- All planting beds must be edged or spaded to form a smooth curvilinear shape.

C. Final Inspection and Acceptance:  
Upon completion of the required maintenance period, the Contractor must make a written request to the Landscape Architect to schedule a final inspection of the turf areas. The Contractor will be required to make this request a minimum of ten (10) working days prior to the inspection. If upon inspection, the Landscape Architect feels that the turf areas are not established within specification, the Contractor will be required to re-work and maintain those unacceptable areas until a final acceptance has been granted.

## Section 32 93 00 - Plants

**1.0 General**

**1.01 Description**

A. This work shall consist of the excavation, installation, backfilling, care and maintenance of landscape plantings.

B. The size and grading standards of plant materials in this specification must conform with the "American Standard for Nursery Stock" by the American Association of Nurseriesmen.

**1.02 Submittals**

A. When required in the plan notes or details, material or product samples must be submitted by the Contractor for approval by the Landscape Architect.

B. The Landscape Architect shall review the materials or product samples submitted and shall reserve the right to compare the submitted materials with the materials delivered to the project site. If the materials delivered to the project site are not of the same type, consistency and quality as the submitted samples, the Landscape Architect will have the right to reject said products and require the Contractor to provide materials from another source.

## Section 32 93 00 - Plants, continued

**1.03 Product Delivery, Storage & Handling**

A. Storage of Materials: Plant materials will be permitted to be stored at the project site in location determined by the Owner, but must be protected by the Contractor from theft, damage or vandalism. Plant materials that are stolen, or damaged in any way must be replaced by the Contractor at no additional expense to the Owner. Supplies, including but not limited to marking paint, fertilizer, insecticides, or other chemicals must be stored off site and transported to the site each day for use.

B. Inspections:

- All plant materials shall be subject to inspection and approval by the Landscape Architect or the Owner's Representative at the point of growth nursery or the project site, prior to installation. Should any plant materials be installed prior to inspection, then the Contractor will assume full responsibility for their replacement, including excavation, hauling and new materials, should they be found to be unacceptable.
- Should any plant materials be found to be unacceptable during the on-site inspection, then they shall be replaced by the Contractor at no additional expense to the Owner.
- The Contractor, at their expense can also arrange for the inspection of plant materials at local point of growth nurseries, which must be located within a fifty (50) mile radius of the project site. The Contractor must pre-tag all shade, ornamental and evergreen trees and a sample of shrubs and perennial materials to be used for the project. The Landscape Architect will review the pre-tagged plant materials and make a decision regarding their acceptability for the project. Should any pre-tagged plant materials not be acceptable, then the Contractor will be responsible for locating another samples for review.
- The Contractor must request the Landscape Architect's attendance at least ten (10) working days in advance for all point of growth nursery inspections.
- The entire cost of the inspections will be borne and paid for the Contractor including Architect's hourly cost of \$150.00/hour, unless otherwise waived by the Architect or paid for directly by the Owner.
- A representative of the Contractor must be present during all plant material inspections.

C. Digging and Handling of Plant Material

- All shade trees, ornamental trees and evergreen trees must be balled and burlapped. Shrubs may be balled and burlapped or container grown. Perennials and groundcovers shall be grown in flats or pots.
- Plant materials with cracked or broken balls will not be accepted.
- All balled and burlapped plants that cannot be planted immediately upon delivery shall be heeled-in with much material and must be watered daily until planted. Plant materials that have been stored on site for a period longer than thirty (30) days will not be accepted.
- All plant materials must be delivered to the project site in covered trailers or protected by a tarp or appropriate coverings during transit.
- Plant materials must be marked for identification with their name or their appropriate key symbol, which can be found on the plant list.

**1.03 Protection**

A. All plant materials must be protected by the Contractor from theft or vandalism until the completed planting has received Preliminary Acceptance. Any plant material that is stolen or vandalized will be replaced by the Contractor at no additional expense to the Owner.

**1.04 Guarantee**

A. Plant materials must be guaranteed to grow and thrive for a period of one year from final acceptance. Any plant materials that are in decline as determined by the Landscape Architect or die during this Guarantee Period must be replaced by the Contractor at no additional expense to the Owner, and will be guaranteed for an additional one (1) year period.

B. The Contractor will be responsible for repairing any damage to turf or pavements caused by plant material replacement.

**2.0 Products and Materials**

A. Water: The Contractor will be required to supply water including all meters, hoses and connections, etc. necessary to water the landscape plantings.

B. Peat Moss or Humus: Commercial type sphagnum Peat Moss.

C. Fertilizer: Agriform Tablets by the Scotts Company, LLC, with the following analysis:

Nitrogen	20%
Phosphoric Acid	10%
Potash	5%

D. Mulch: A double shredded hardwood bark mulch material shall be used. Submit sample to the Landscape Architect for approval.

E. Topsoil: Topsoil required for planting mixture must be pulverized, clean soil, free of weeds, roots, stalks, and other debris. Submit sample to Landscape Architect for approval.

F. Planting Mixture: Planting mix soil shall consist of topsoil, topped with three (3) inch layer of One Step Soil Conditioner with Mycorrhizae as produced by Midwest Trading Horticultural Supplies, Inc. Till in three (3) inch layer of One Step Soil Conditioner to a depth of twelve (12) inches within topsoil fill. Fertilizer Tablets shall be included in the installation in accordance with manufacturer's instructions.

G. Plant Materials: All plant materials used for the project must be nursery grown at a location within a fifty (50) mile radius of the project site.

- All plant materials used for this project must be freshly dug or container grown.
- All plant materials must have a typical growth habit, be appropriately branched and densely foliated and shall be disease and pest free.
- All plants must conform to the sizes contained on the plant list and the requirements set forth in the American Standard for Nursery Stock.
- Plant material substitutions may only be made with the written approval of the Landscape Architect. The Contractor must submit all requests for plant material substitutions in writing to the Landscape Architect.

H. Pre-Emergence Herbicide: Shall be a granular form of Preen Garden Weed Preventer. This granular weed preventer will be applied after mulch installation in all planting beds at a rate of one (1) ounce per ten (10) square feet. Immediately water in after installation. Follow manufacturer's installation instructions.

**3.0 Execution**

A. Plant Material Layout and Location:

- Prior to any installation, the Contractor must locate all plant materials using wooden lath or flags. The Landscape Architect or the Owner's Representative will review and approve plant material locations.
- The Contractor must utilize J.U.L.I.E. the local municipality or the Owner's representative to locate all utilities prior to any excavation.

B. Planting Hole Excavation:

- The Contractor must excavate as necessary for installation of plant materials. All rock, broken concrete and similar debris must be removed from planting holes and hauled from the site at no additional expense to the Owner.
- All excess soils generated from planting operations must be hauled from the site at no additional expense to the Owner.

## Section 32 93 00 - Plants, continued

**3.01 Installation**

A. Planting Seasons:

- Deciduous Plants must be planted during the following dates: April 1st to June 1st and October 1st to December 15th.
- Evergreen Plants must be planted during the following dates: April 1st to May 15th and September 1st to October 1st
- The planting periods indicated may be extended due to weather conditions or other factors, which must be approved by the Landscape Architect.
- The Contractor will be relieved of his guarantee responsibility should the Owner require plant material installations to be completed during other times than the planting periods indicated.

B. Planting:

- All shade trees, ornamental trees, evergreen trees, shrubs and perennials shall be planted in holes excavated at least twice the width of the diameter of the ball or container and deep enough so that the top of the ball or soil in the container is at or just above existing grade.
- Install Agriform fertilizer tablets in excavated holes after filling half way up the root ball. Follow manufacturer's Application Rates.
- All twine or rope must be cut and removed and the burlap folded away from the top of the ball. The excavation must be backfilled with the planting mixture and watered. Any settlement will be filled with planting mix.
- A 4" deep saucer, similar to the diameter of the planting hole shall be created using planting mix.
- Groundcovers: All perennial and groundcover beds shall be tilled to a depth of six (6) inches. Three (3) inches of mushroom or similar compost must then be tilled into the soil and the planting bed raked smooth prior to planting.

C. Pruning:

- All trees and shrubs shall be pruned to enhance the natural character of the plant, and to remove any broken or damaged branches.

D. Mulching:

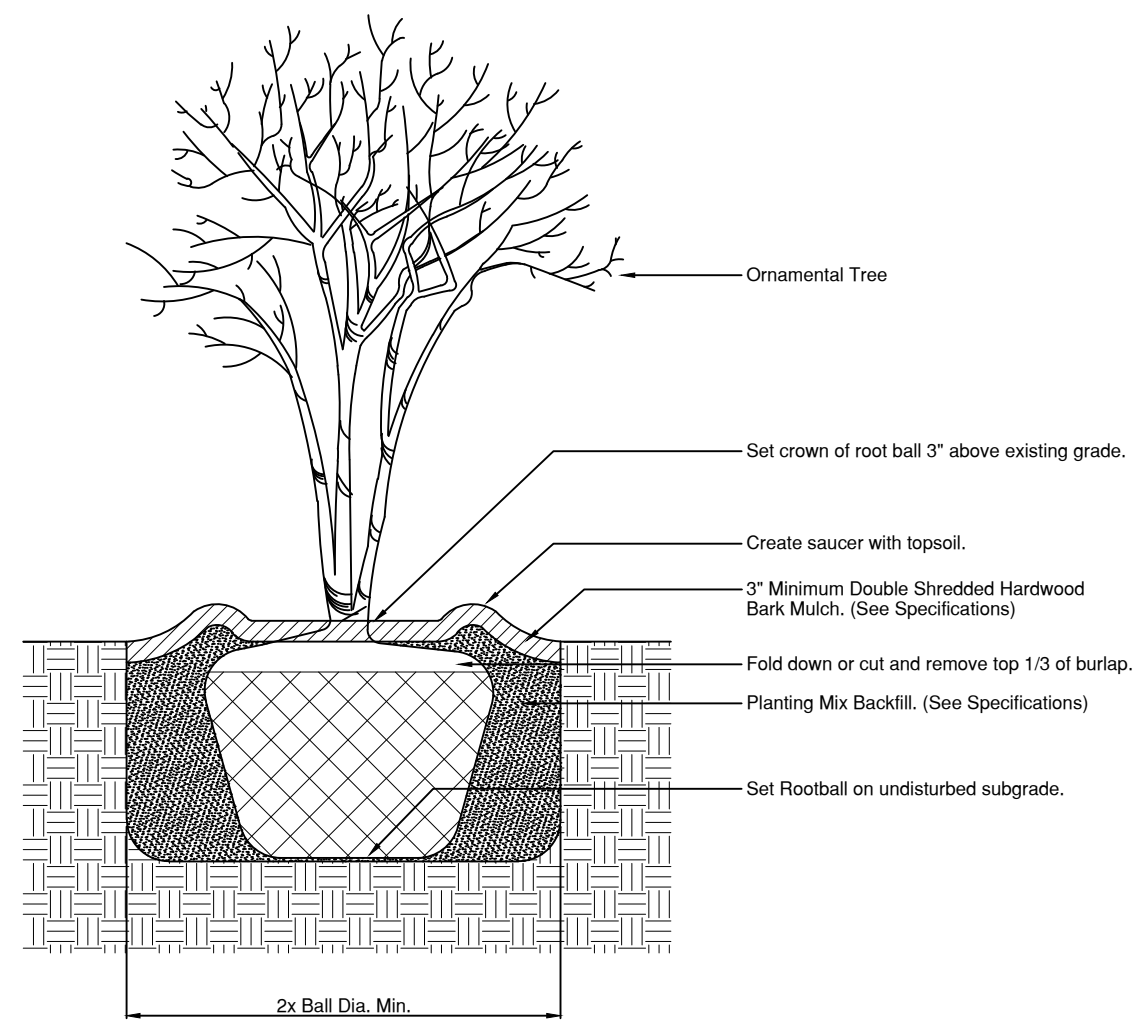
- All shade trees, ornamental trees, and evergreen trees shall be mulched. The mulch shall cover the planting area with a minimum of three (3) inches and not more than four (4) inches in depth. No mulch material may cover the trunk or plant stem.
- All massed plantings will be mulched with a minimum of three (3) inches and not more than four (4) inches of mulch. The entire bed shall be mulched under the plants. A spaded edge must be produced in the bed shape as indicated on the plans.
- Groundcover areas will not receive any mulch.

E. Pre-Emergence Herbicide Application:

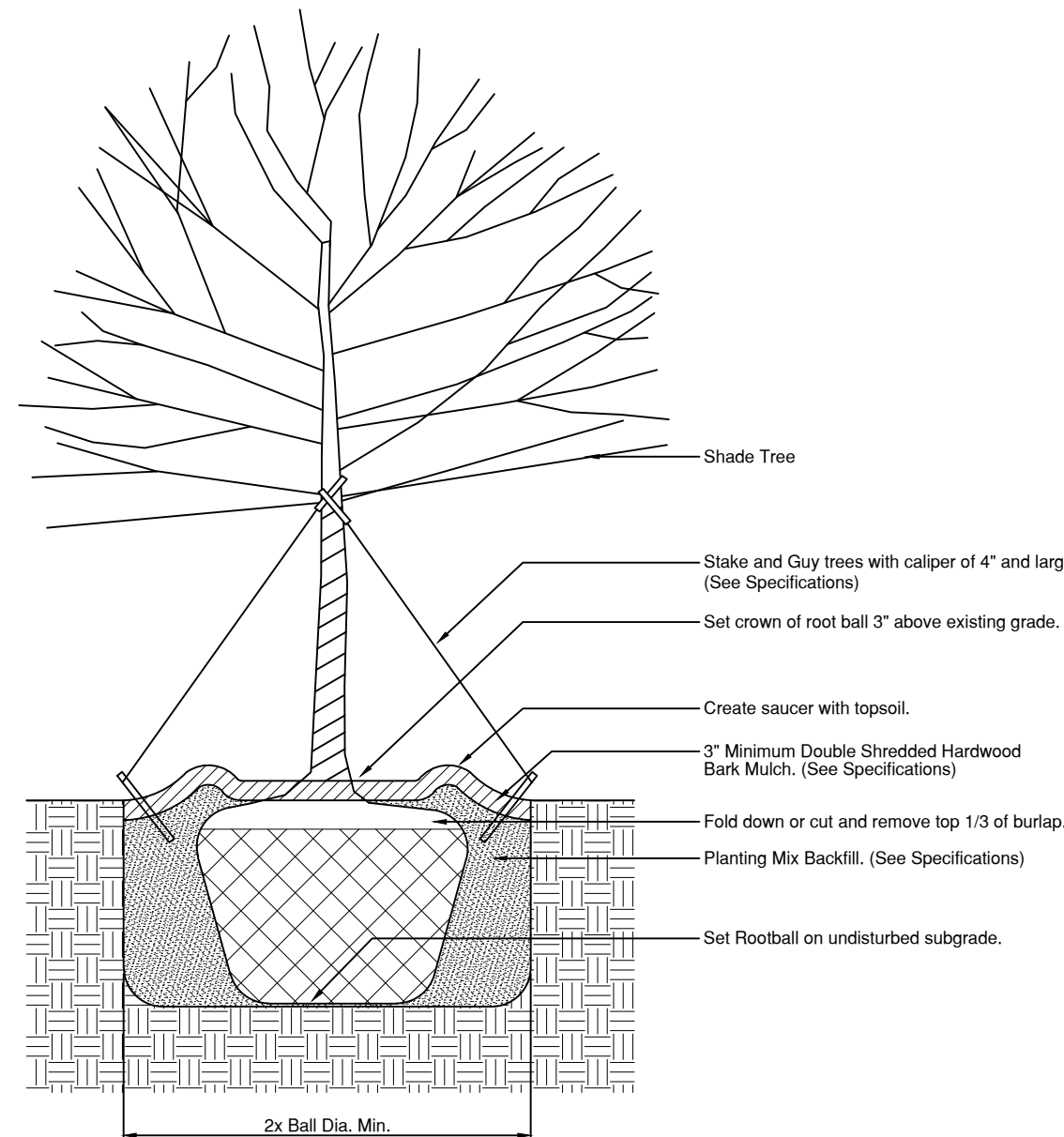
- Granular weed preventer will be applied after mulch installation in all planting beds at a rate of one (1) ounce per ten (10) square feet. Immediately water in after installation. Follow manufacturer's installation instructions.

F. Wrapping, Staking & Guying:

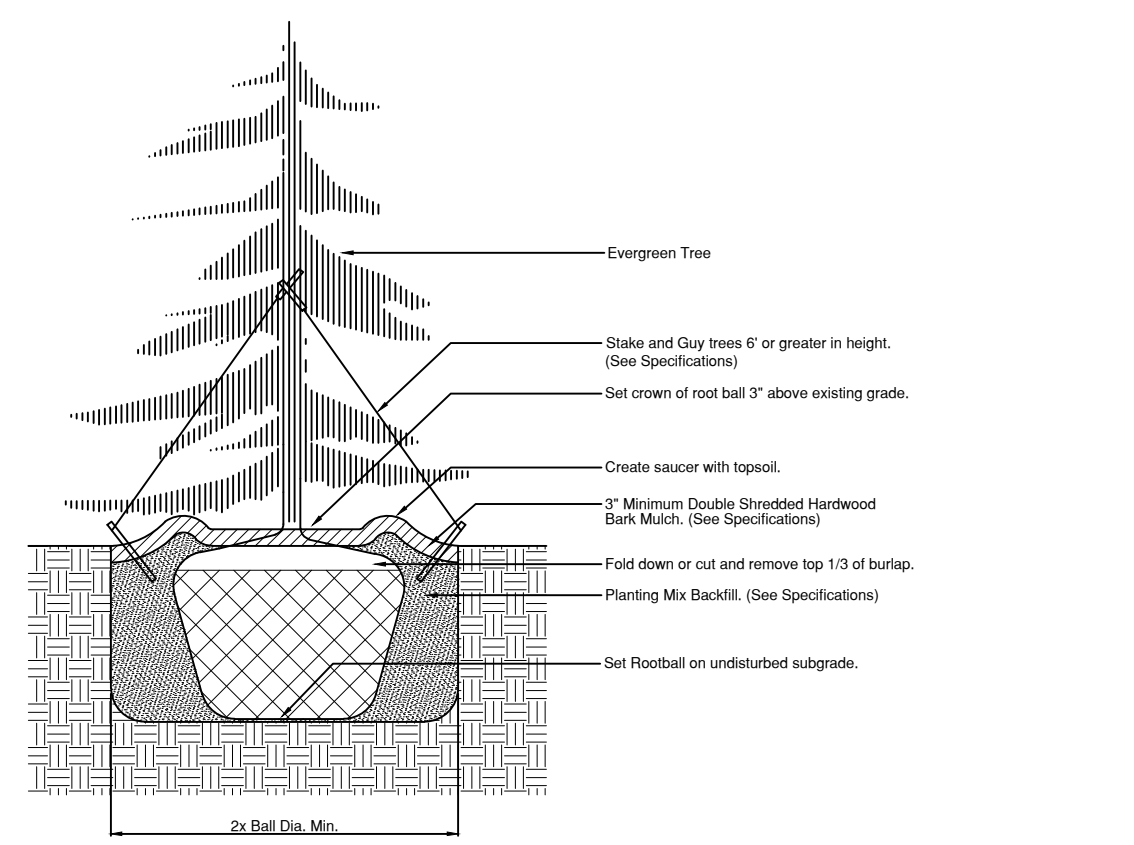
- All shade and single stem ornamental trees must be wrapped with burlap or an approved tree wrap from the base of the tree to the start of the first branches.
- Evergreen trees 6" higher and larger must be staked and guyed. Deciduous trees 4" caliper and larger must be staked and guyed.
- When required, a three-point guying system shall be used consisting of galvanized wires, hose loops, turn buckles and wooden stakes. Other commercial staking and guying systems may be used if presented by the Contractor and approved by the Landscape Architect. All guy wires must have high visibility orange flagging and all stakes must be painted with high visibility orange paint.



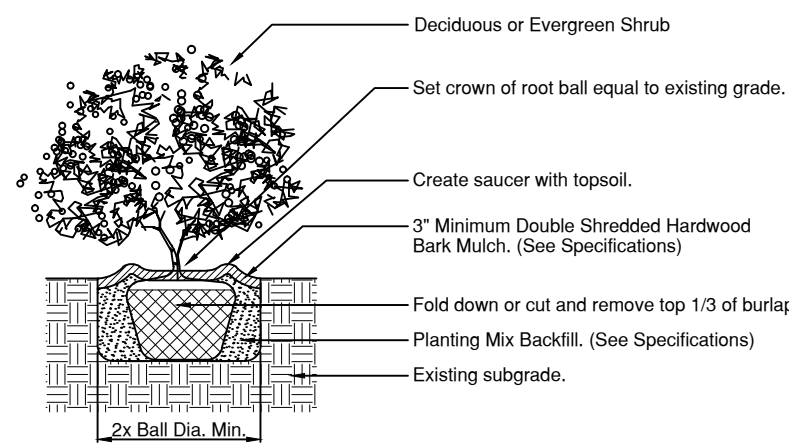
Ornamental Tree Planting



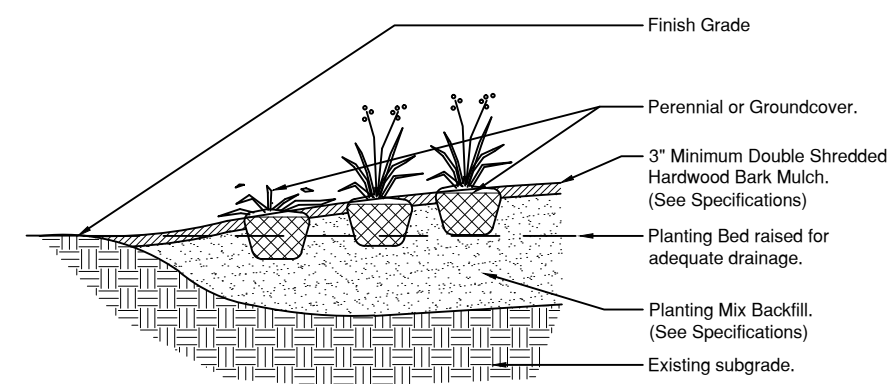
Shade Tree Planting



Evergreen Tree Planting



Shrub Planting



Perennial Planting



charles vincent george  
ARCHITECTS

1245 E. Diehl Rd. Suite 101  
Naperville, IL 60563  
630.357.2023 F | 630.357.2662  
cvgarchitects.com

### STAMP:

EXPIRES 11/30/2016  
IL ARCHITECTURAL DESIGN FIRM NO.: 184-000544  
DATE: \_\_\_\_\_

**COPYRIGHT:**  
THE ATTACHED DRAWINGS ARE COPYRIGHTED AND ARE FOR INFORMATIONAL PURPOSES ONLY. CHARLES VINCENT GEORGE ARCHITECTS, INC. HAS NO MEANS OF ENSURING THAT THE DRAWINGS WILL NOT, OR HAVE NOT BEEN AFFECTED BY ANY FILE CONVERSION OR PRINTING PROCESS AND CANNOT THEREFORE BE RESPONSIBLE FOR THEIR CONTENTS. IF THE DRAWINGS ARE TO BE USED BY A THIRD PARTY FOR ANY PURPOSE, THE THIRD PARTY SHALL BE SOLELY RESPONSIBLE FOR ENSURING THE ACCURACY OF THE INFORMATION CONTAINED THEREIN. ALL UNAUTHORIZED PRINTING AND/OR DISTRIBUTION IS STRICTLY PROHIBITED WITHOUT PRIOR WRITTEN CONSENT FROM CHARLES VINCENT GEORGE ARCHITECTS, INC.

### ISSUE AND/OR REVISIONS:

NO.	DATE	DESCRIPTION
1	7/27/15	Per City Comments

### PROJECT:

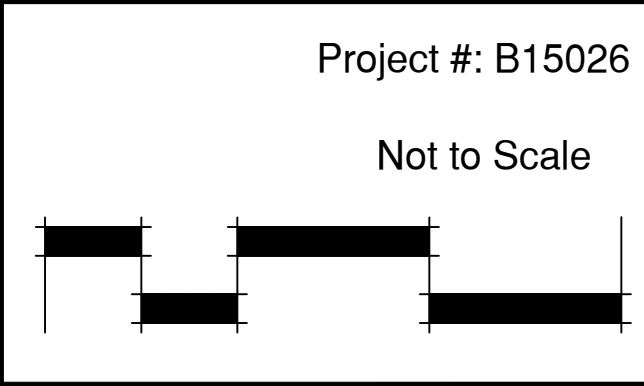
ST. CHARLES BANK & TRUST  
9700 HIGGINS ROAD, ROSEMONT, IL 60018  
NEW BRANCH BANK:  
**AURORA BANK & TRUST**  
2287 WEST GALENA BLVD.  
AURORA, ILLINOIS 60506

TITLE:  
Landscape Details and Specs.  
for Aurora Bank & Trust

DATE: 06/24/2015 PROJECT # 2015-026

PRINCIPAL: BFG SHEET: L2

PROJECT MGR: JBL DRAWN BY: JBL  
ISSUED FOR: 6/24/15 JES/00/DRM/



Project #: B15026  
Not to Scale

**BDG**  
**Brusseau Design Group, LLC**  
Landscape Architecture • Land Planning • Recreational Planning & Design  
2675 Pratum Avenue, Hoffman Estates, IL 60192