

ELEVATIONS

ELEVATION DATA TABLE	
CELL TOWER BUILDING HEIGHT	110'
GRADE ELEVATION	0'
EXTERIOR MATERIAL LIST INCLUDING COLORS FOR THE CELL TOWER	GALVANIZED STEEL PAINTED WHITE



AMERICAN TOWER
 ATC SERVICES, INC.
 8505 FREEMONT PARKWAY
 SUITE 135
 IRVING, TX 75063
 NYSE:AMT

T-Mobile
 T-MOBILE
 8550 WEST BRYN MAWR AVE
 SUITE 100
 CHICAGO, IL 60631
 MAIN: (773) 444-5400

CONCORDIA, LTD
 A PROFESSIONAL DESIGN FIRM
 LICENSE # 184 004952-D B A
CONCORDIA WIRELESS, INC.
 361 RANDY ROAD
 UNIT 101
 CAROL STREAM, IL 60188
 MAIN: (847) 981-0801

DRAWN BY: BG	CHECKED BY: GMS
CHECKED BY: RH	APPROVED BY: GMS

No.	Revision/Issue	Date	Initial
A	LEASE EXHIBIT	12/29/14	KC
B	REVISED LEASE EXHIBIT	01/19/15	KC
C	90% REVIEW	01/29/15	AL
D	FINAL	02/09/15	AL
E	NEW LOCATION LEASE EXHIBIT	02/19/15	BG
F	NEW LOCATION 90% REVIEW	02/25/15	JR
G	FINAL	03/04/15	BG
H	REDESIGN	04/03/15	KC
I	UTILITY REVISION	04/29/15	JR
J	CITY COMMENTS	05/19/15	JR
K	CLIENT COMMENTS	05/22/15	JR/PS
L	REVISION	05/29/15	JR
M	CITY COMMENTS #2	06/01/15	HE

ATC # 283680
 CH67348G
 LINCOLN PARK
 800 MARSEILLAISE PL
 AURORA, IL 60506

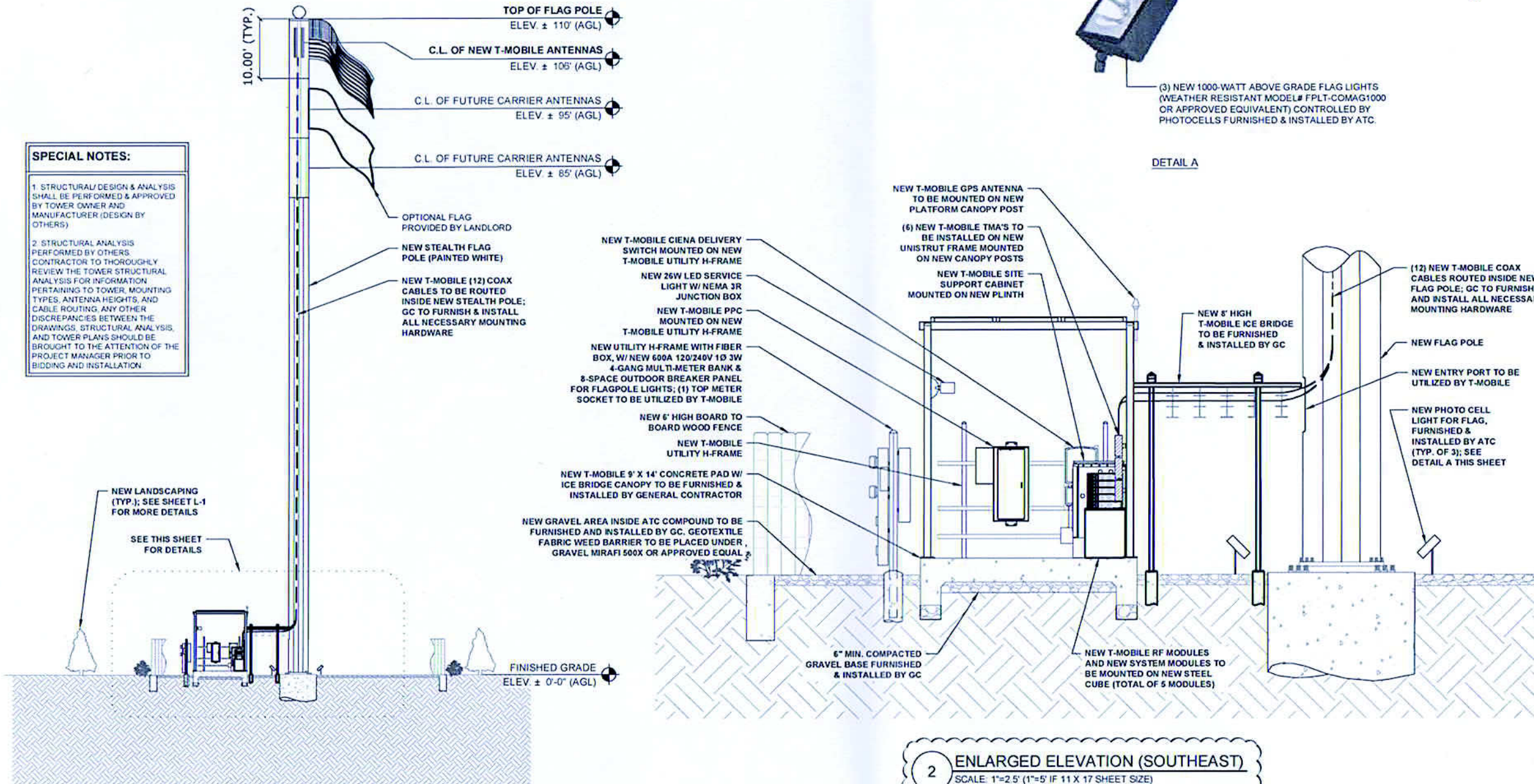
OWNER:
 FOX VALLEY PARK DISTRICT
 101 W ILLINOIS AURORA, IL 60506

SITE ELEVATION

ELEVATIONS
A-2 08-07-15
 M HE

SPECIAL NOTES:

- STRUCTURAL DESIGN & ANALYSIS SHALL BE PERFORMED & APPROVED BY TOWER OWNER AND MANUFACTURER (DESIGN BY OTHERS)
- STRUCTURAL ANALYSIS PERFORMED BY OTHERS CONTRACTOR TO THOROUGHLY REVIEW THE TOWER STRUCTURAL ANALYSIS FOR INFORMATION PERTAINING TO TOWER, MOUNTING TYPES, ANTENNA HEIGHTS, AND CABLE ROUTING. ANY OTHER DISCREPANCIES BETWEEN THE DRAWINGS, STRUCTURAL ANALYSIS, AND TOWER PLANS SHOULD BE BROUGHT TO THE ATTENTION OF THE PROJECT MANAGER PRIOR TO BIDDING AND INSTALLATION.



1 SITE ELEVATION (SOUTHEAST)
 SCALE: 1"=10' (1"=20' IF 11 X 17 SHEET SIZE)

SCALE: 1"=20'
 0' 5' 10' 20'

2 ENLARGED ELEVATION (SOUTHEAST)
 SCALE: 1"=2.5' (1"=5' IF 11 X 17 SHEET SIZE)

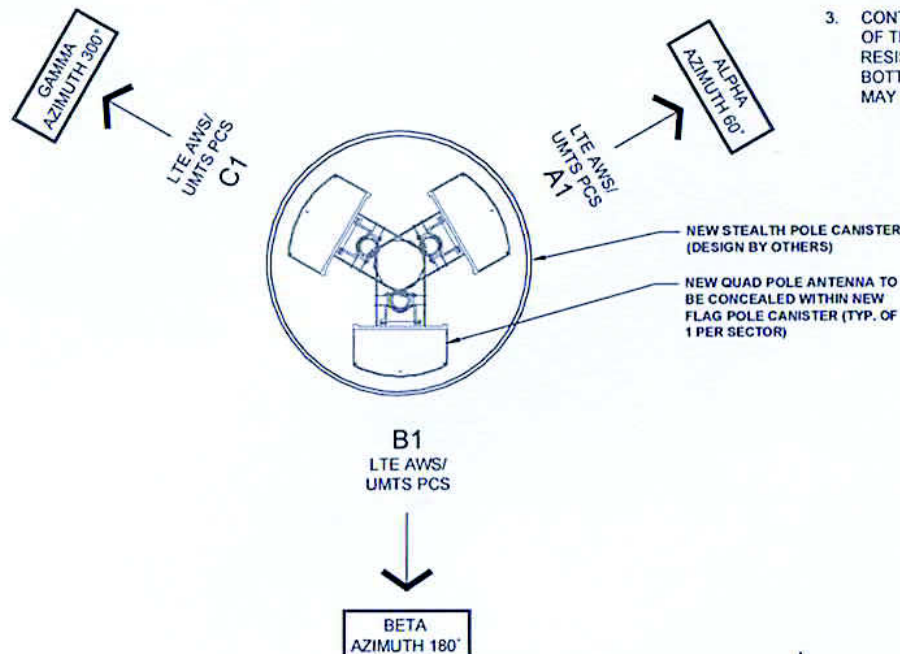
SCALE: 1"=5'
 0' 1.25' 2.5' 5'

ANTENNA AND CABLE SCHEDULE												
SECTOR	ALPHA				BETA				GAMMA			
LOCATION	A-1	-	-	-	B-1	-	-	-	C-1	-	-	-
TECHNOLOGY	LTE-AWS/ UMTS-PCS	-	-	-	LTE-AWS/ UMTS-PCS	-	-	-	LTE-AWS/ UMTS-PCS	-	-	-
AZIMUTH	60°	-	-	-	180°	-	-	-	300°	-	-	-
RAD CENTER	±106'-0"				±106'-0"				±106'-0"			
COLOR CODING	RED (1-4)	-	-	-	GREEN (1-4)	-	-	-	BLUE (1-4)	-	-	-
MODEL #	ANDREW TMBXX-6516-A2M	-	-	-	ANDREW TMBXX-6516-A2M	-	-	-	ANDREW TMBXX-6516-A2M	-	-	-
MECHANICAL DOWNTILT	0	-	-	-	0	-	-	-	0	-	-	-
ELECTRICAL DOWNTILT	2	-	-	-	2	-	-	-	2	-	-	-
RRU TYPE	FRIE / FXFC*	-	-	-	FRIE / FXFC*	-	-	-	FRIE / FXFC*	-	-	-
COAX DIA. & TYPE	(4) AVA5-50-7/8"	-	-	-	(4) AVA5-50-7/8"	-	-	-	(4) AVA5-50-7/8"	-	-	-
COAX ACTUAL LENGTH	(4) ±141'	-	-	-	(4) ±141'	-	-	-	(4) ±141'	-	-	-
COAX FACTORY LENGTH	N/A	-	-	-	N/A	-	-	-	N/A	-	-	-
BUNDLE DIA. & TYPE	-	-	-	-	-	-	-	-	-	-	-	-
BUNDLE FACTORY LENGTH	-	-	-	-	-	-	-	-	-	-	-	-
JUMPER TYPE FROM COVP TO RRU	-	-	-	-	-	-	-	-	-	-	-	-
JUMPER LENGTH	-	-	-	-	-	-	-	-	-	-	-	-
JUMPER TYPE FROM TMA TO ANTENNA	-	-	-	-	-	-	-	-	-	-	-	-
JUMPER LENGTH	(4) 6'	-	-	-	(4) 6'	-	-	-	(4) 6'	-	-	-

RET JUMPER DAISY-CHAIN FROM ALPHA SECTOR TO BETA & GAMMA SECTORS
 (*) - GROUND MOUNTED; (2) FRIE SHARED BY ALL SECTORS & (1) FXFC SHARED BY ALL SECTORS

ANTENNA AND COAXIAL CABLE SCHEDULE

- ALL ANTENNAS SHALL BE FURNISHED WITH DOWNTILT BRACKETS. CONTRACTOR SHALL COORDINATE REQUIRED MECHANICAL DOWNTILT FOR EACH ANTENNA WITH RF ENGINEER. ANTENNA DOWNTILT SHALL BE SET AND VERIFIED BY A SMART LEVEL.
- ANTENNA CENTERLINE HEIGHT IS IN REFERENCE TO ELEVATION 0'-0"
- CONTRACTOR SHALL INSTALL COLOR CODE RINGS ON EACH OF THE HYBRID CABLES AND JUMPER CABLES WITH UV RESISTANT TAPE. ALL CABLE SHALL BE MARKED AT TOP AND BOTTOM WITH 2" COLOR TAPE OR STENCIL TAG. COLOR TAPE MAY BE OBTAINED FROM GRAYBAR ELECTRONICS.



LEGEND

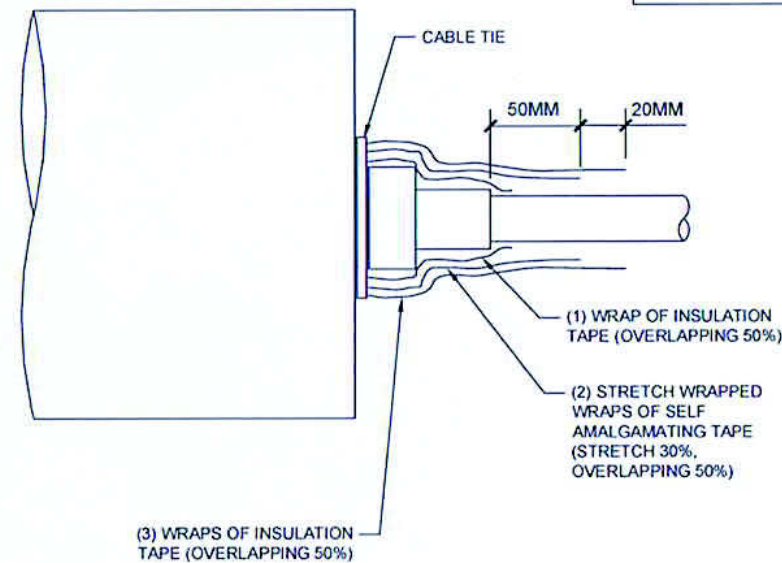
- TMA
- FRIG
- FXFC & FRLB
- COVP
- ANTENNA

NOTES :

1. GC TO VERIFY FINAL RF CONFIGURATION w/T-MOBILE RF ENGINEER PRIOR TO INSTALLATION.

2. GC TO VERIFY W/ T-MOBILE RF ENGINEER WHICH PORTS SHALL REMAIN UNUSED; GC TO INSTALL A CAP ON ALL UNUSED PORTS

JUMPERS TO BE TORQUED TO 221.27 IN/LBS



2 RF JUMPER CONNECTION DETAIL
SCALE: N.T.S.



AMERICAN TOWER
 ATC SERVICES, INC.
 8505 FREEPORT PARKWAY
 SUITE 135
 IRVING, TX 75063
 NYSE:AMT

T-Mobile
 T-MOBILE
 8550 WEST BRYN MAWR AVE
 SUITE 100
 CHICAGO, IL 60631
 MAIN: (773) 444-5400

CONCORDIA, LTD.
 A PROFESSIONAL DESIGN FIRM
 LICENSE # 184 004952- D.B.A.
CONCORDIA WIRELESS, INC.
 361 RANDY ROAD
 UNIT 101
 CAROL STREAM, IL 60188
 MAIN: (847) 981-0801

DRAWN BY: BG CHECKED BY: GMS
 CHECKED BY: RH APPROVED BY: GMS

Rev	Revision/Issue	Date	Initial
A	LEASE EXHIBIT	12/29/14	KC
B	REVISED LEASE EXHIBIT	01/16/15	KC
C	80% REVIEW	01/26/15	AL
D	FINAL	02/06/15	AL
E	NEW LOCATION LEASE EXHIBIT	02/16/15	BG
F	NEW LOCATION 80% REVIEW	02/25/15	JR
G	FINAL	03/04/15	BG
H	REDESIGN	04/03/15	KC
I	UTILITY REVISION	04/20/15	JR
J	CITY COMMENTS	05/19/15	JR
K	CLIENT COMMENTS	05/22/15	JR/PS
L	REVISION	05/29/15	JR
M	CITY COMMENTS #2	06/01/15	HE

ATC # 283680
 CH67348G
 LINCOLN PARK
 800 MARSEILLAISE PL
 AURORA, IL 60506

OWNER:
 FOX VALLEY PARK DISTRICT
 101 W ILLINOIS AURORA, IL 60506

CABLE SCHEDULE &
 ANTENNA DETAILS

ELEVATIONS
A-3 08-07-15
 M HE

User: PMCCULL

T-Mobile RFDS Data Configuration Sheet

Date: 3/30/2015

[Back to RFDS home](#)

[Go Back](#)

[Print RFDS](#)

Site Information:

Market:	CH	Radio Vendor:	NSN	Plan Year:	NLP Desc:
Site Id:	CH67348G	Site Name:	Lincoln Park	Structural Owner:	American Tower
Type/Class:	Structure (Non-Building) / Flag Pole				
Address:	597 S Russell Ave	City:	Aurora	State:	IL Zip: 60506
Latitude:	41.7549	Longitude:	-88.335	Created Date:	Jan 15 2015
RF Manager:	Alex Laffer	RF Engineer:	Greg Johnson	Last Save Date:	Mar 30 2015 1:42PM
				Last Modified By:	PMCCULL
Project Type:	NSD	RFDS Upgraded?		Template?	Standard

Cell Site Configuration

Configuration Type:	Configuration 3G
Final Configuration (Antenna/Line/TMA/RRU):	3/12/6/0
Solution Type:	Ground
RFDS Status:	Preliminary
Final Sector Count:	3
Design Type:	Final
Drawing Type:	Default

Sector Information

PCS UMTS Design	A	B	C	D	E	F
Antenna RAD Center:	106	106	106			
Antenna Azimuth:	60	180	300			
Mechanical Tilt:	0	0	0			
Electrical Tilt:	2	2	2			

L2100 Design	A	B	C	D	E	F
Antenna RAD Center:	106	106	106			
Antenna Azimuth:	60	180	300			
Mechanical Tilt:	0	0	0			
Electrical Tilt:	2	2	2			

Antenna Configuration (Site Level)	Antenna ReUse Existing?/Qty	Antenna Model	Antenna Qty	Antenna and (or) Ports Shared
PCS UMTS	1		0	Antenna Shared with AWS LTE
L2100	New / 3	Andrew - TMBXX-6516-A2M	3	Antenna Shared with PCS UMTS

TMA Configuration (Site Level)	TMA (ReUse existing TMA/New/Not Needed)	TMA Model	TMA Qty	TMA Location
PCS UMTS	New	Andrew Twin PCS - ETW190VS12UB	3	Ground
L2100	Now	Andrew Twin AWS - ETW200VS12UB	3	Ground

Diplexer/Combiner Configuration	A	B	C	D	E	F
Diplexer Model (1):						
Diplexer Qty (1):						
Diplexer Model (2):						
Diplexer Qty (2):						
Combiner/Duplexer Model:						
Combiner/Duplexer Qty:						

Antenna Fiber/ Coax Solution (Site Level)

Use HCS (Yes/No)?	No
Use NSN Fiber & OVP for Rooftop (Yes/No)?	No
Use Coax Cable (Yes/No)?	Yes
Hybrid Cable Configuration (Site Level)	
Hybrid Cable Type:	
Hybrid Cable Length:	
Hybrid Cable Qty:	
Hybrid Cable Config(Sector Level)	A B C D E F
HCS run between Sectors (e.g. Rooftop/Watertank etc.)	
Hybrid Cable Length (ft):	
COVP Configuration (Site Level)	
COVP Type (1):	COVP Qty (1):
COVP Type (2):	COVP Qty (2):
Coax Configuration	A B C D E F
Existing Coax Qty:	
Existing Coax Size:	
Re-use existing coax for TDOA (Yes/No)?	
Qty. of excess coax lines to remove?	
New Coax Type:	AVAS-50-7/8" AVAS-50-7/8" AVAS-50-7/8"
New Coax Length/Line:	120 120 120
New Coax Qty:	4 4 4
RET Home-Run Cable:	New-Shared New-Shared New-Shared
RET Home-Run Cable Length(ft):	120

System Modules (Site Level)	System Module Type (1)	System Module Qty (1)	System Module Type(2)	System Module Qty (2)	System Sub Module Type	System Sub Module Qty
PCS UMTS	FSMF	1				
LTE	FSMF	1				
RF Modules (Site Level)	RF Module Type(1)	RF Module Qty(1)	RF Module Type(2)	RF Module Qty(2)		
PCS UMTS	FXFC	1				
L2100	FRIE	2				
Sector/BTS/Node-B (Site Level)	Sector Count:	BTS/Node-B Count:				
PCS UMTS	3	1				
L2100	3	1				

Comments
 01/27/15 HCS updated to 150'
 02/24/15 HCS updated to 125' based on CD
 03/10/15 design changed to flagpole



DRAWN BY: BG CHECKED BY: GMS
 CHECKED BY: RH APPROVED BY: GMS

No.	Revision/Issue	Date	Initial
A	LEASE EXHIBIT	12/09/14	KC
B	REVISED LEASE EXHIBIT	01/15/15	KC
C	90% REVIEW	01/26/15	AL
D	FINAL	02/09/15	AL
E	NEW LOCATION LEASE EXHIBIT	02/16/15	BG
F	NEW LOCATION 90% REVIEW	02/25/15	JR
G	FINAL	03/04/15	BG
H	REVISION	04/03/15	KC
I	UTILITY REVISION	04/29/15	JR
J	CITY COMMENTS	05/18/15	JR
K	CLIENT COMMENTS	06/22/15	JR/PS
L	REVISION	08/29/15	JR
M	CITY COMMENTS #2	08/27/15	HE

ATC # 283680
 CH67348G
 LINCOLN PARK
 800 MARSEILLAISE PL
 AURORA, IL 60506

OWNER:
 FOX VALLEY PARK DISTRICT
 101 W ILLINOIS AURORA, IL 60506

RFDS

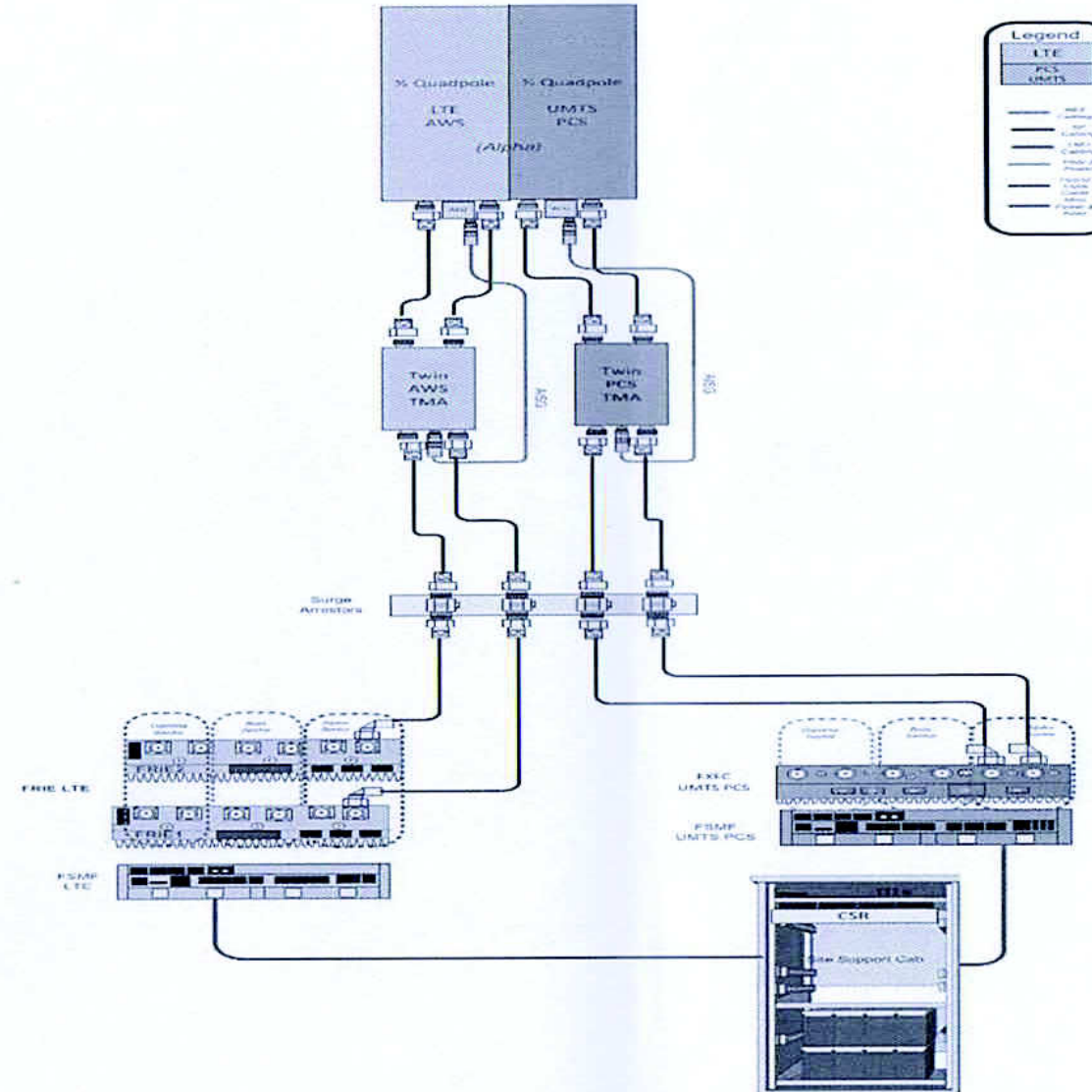
ELEVATIONS
 A-3A 08-07-15
 M HE

Site: CH67348G - Configuration Drawing 1

Drawing (1) Comments:

Configuration 3G for greenfield ground sites with only LTE and UMTS PCS
(only use in cases where no RRU build is possible)

Drawing Date: 6/12/2014



1 NSN CONFIGURATION DIAGRAM

AMERICAN TOWER
ATC SERVICES, INC.
8505 FREEPORT PARKWAY
SUITE 135
IRVING, TX 75063
NYSE:AMT

T-Mobile
T-MOBILE
8550 WEST BRYN MAWR AVE
SUITE 100
CHICAGO, IL 60631
MAIN: (773) 444-5400

CONCORDIA, LTD
A PROFESSIONAL DESIGN FIRM
LICENSE # 164 004552-D.B.A.
CONCORDIA WIRELESS, INC
361 RANDY ROAD
UNIT 101
CAROL STREAM, IL 60188
MAIN: (647) 981-0801

DRAWN BY: BG CHECKED BY: GMS
CHECKED BY: RH APPROVED BY: GMS

No.	Revision/Issue	Date	Initial
A	LEASE EXHIBIT	12/09/14	KC
B	REVISED LEASE EXHIBIT	01/16/15	KC
C	90% REVIEW	01/26/15	AL
D	FINAL	02/06/15	AL
E	NEW LOCATION LEASE EXHIBIT	02/16/15	BG
F	NEW LOCATION 90% REVIEW	02/25/15	JR
G	FINAL	03/04/15	BG
H	REDESIGN	04/03/15	KC
I	UTILITY REVISION	04/29/15	JR
J	CITY COMMENTS	05/18/15	JR
K	CLIENT COMMENTS	05/22/15	JR/PS
L	REVISION	05/29/15	JR
M	CITY COMMENTS #2	08/07/15	HE

ATC # 283680
CH67348G
LINCOLN PARK
800 MARSEILLAISE PL
AURORA, IL 60506

OWNER:
FOX VALLEY PARK DISTRICT
101 W ILLINOIS AURORA, IL 60506

NSN CONFIGURATION
DIAGRAM

ELEVATIONS
A-3B 08-07-15
M HE

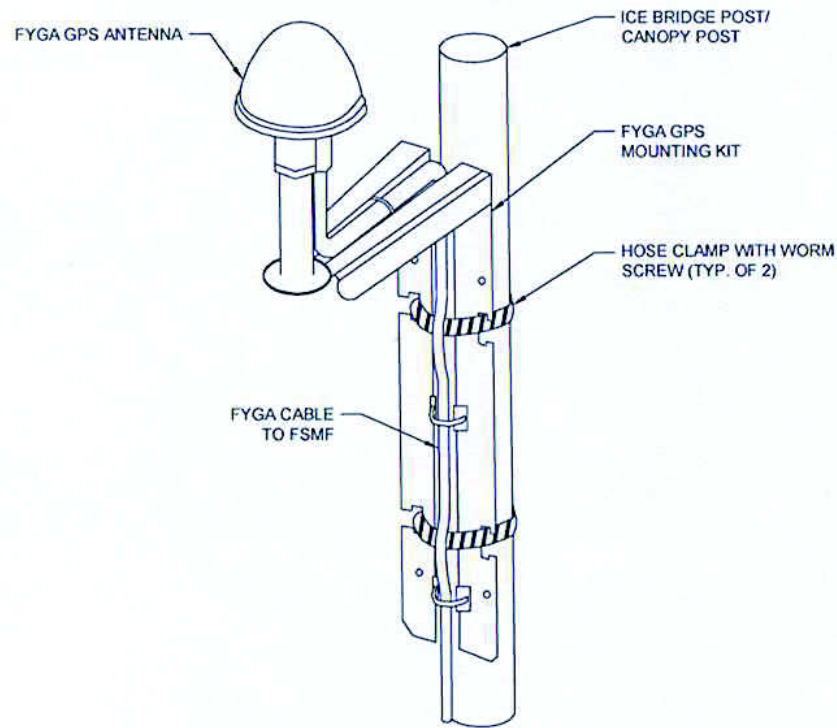
NOTES:

1. THE GPS ANTENNA MOUNT IS DESIGNED TO FASTEN TO A STANDARD 1-1/4" DIA. SCH. 40 GALVANIZED OR STAINLESS STEEL PIPE. THE PIPE MUST BE THREADED AT THE ANTENNA MOUNT END. THE PIPE SHALL BE CUT TO THE REQUIRED LENGTH (MIN. OF 18') USING A WAND OR ROTARY PIPE CUTTER TO ASSURE A SMOOTH PERPENDICULAR CUT. THE CUT PIPE END SHALL BE DEBURRED AND SMOOTH IN ORDER TO SEAL AGAINST THE NEOPRENE GASKET ATTACHED TO THE ANTENNAS MOUNT.

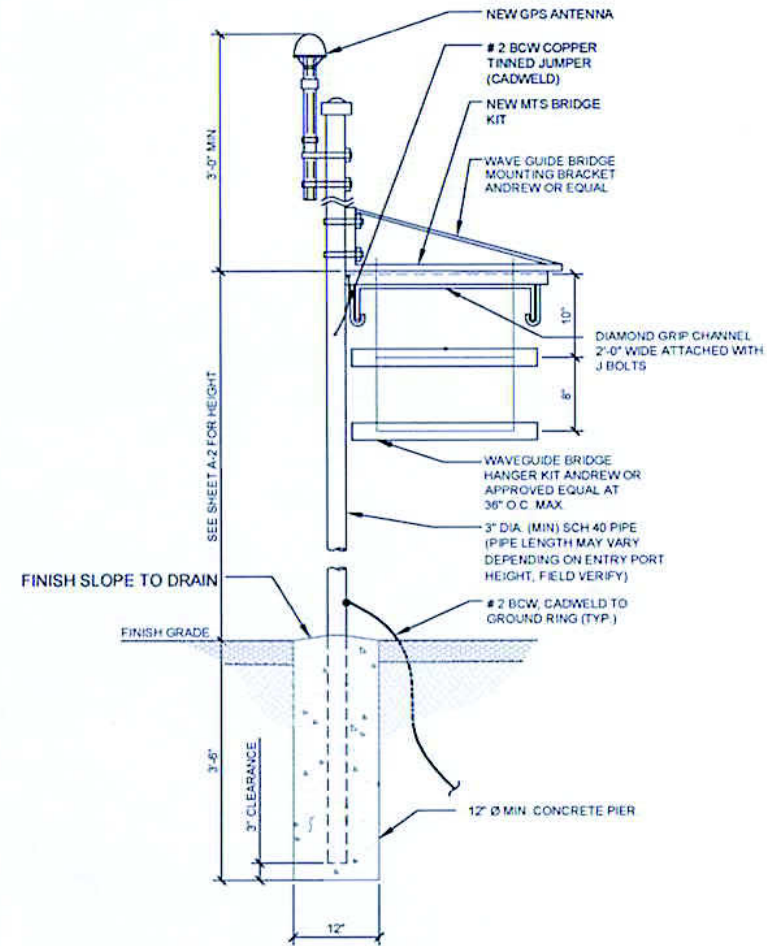
2. THE MOUNTING PLATE SHALL BE FABRICATED AS SHOWN AND ATTACHED TO THE APPROPRIATE SUPPORT STRUCTURE USING U-BOLTS. THE SUPPORT PIPE FOR THE GPS SHALL BE MOUNTED USING OVERSIZED U-BOLTS TO ALLOW ADJUSTMENT. IT IS CRITICAL THAT THE GPS ANTENNA IS MOUNTED WITHIN 2" OF VERTICAL AND THE BASE OF THE ANTENNA IS WITHIN 2" LEVEL.

3. INSTALL GPS ANTENNA AS SPECIFIED ON SITE PLAN. IF INSTALLING ON ICE/CABLE BRIDGE ENSURE THAT GPS IS A MINIMUM OS 10' ABOVE GRADE, ON THE FURTHEST POST FROM THE TOWER TO ATTAIN MAXIMUM COVERAGE.

4. GENERAL CONTRACTOR SHALL ENSURE THE GPS ANTENNA HAS THE REQUIRED FULL EXPOSURE TO THE SOUTHERN HEMISPHERE/HORIZON.



1 FYGA GPS ANTENNA DETAIL
SCALE: N.T.S.



2 GPS ANTENNA & ICE BRIDGE SECTION
SCALE: N.T.S.



AMERICAN TOWER
ATC SERVICES, INC.
8505 FREEPORT PARKWAY
SUITE 135
IRVING, TX 75063
NYSE:AMT

T-Mobile
T-MOBILE
8550 WEST BRYN MAWR AVE.
SUITE 100
CHICAGO, IL 60631
MAIN: (773) 444-5400

CONCORDIA, LTD
A PROFESSIONAL DESIGN FIRM
LICENSE # 164 004952- D.B.A.
CONCORDIA WIRELESS, INC.
361 RANDY ROAD
UNIT 101
CAROL STREAM, IL 60188
MAIN: (847) 981-0801

DRAWN BY: BG CHECKED BY: GMS
CHECKED BY: RH APPROVED BY: GMS

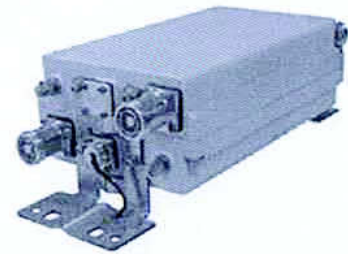
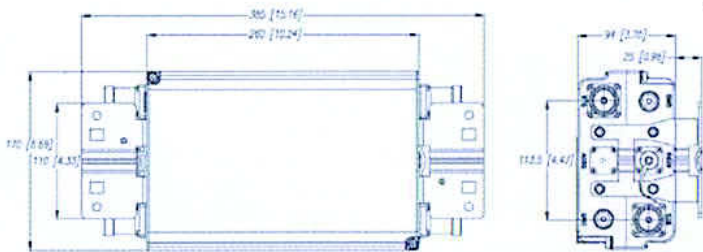
No.	Revisions	Date	Initial
A	LEAKS EXHIBIT	12-29-14	KC
B	REVISED LEAKS EXHIBIT	01-15-15	KC
C	80% REVIEW	01-26-15	AL
D	FINAL	02-09-15	AL
E	NEW LOCATION LEAKS EXHIBIT	02-16-15	GG
F	NEW LOCATION 80% REVIEW	02-25-15	JR
G	FINAL	03-04-15	KC
H	REVISION	04-02-15	KC
I	UTILITY REVISION	04-20-15	JR
J	CITY COMMENTS	05-15-15	JR
K	CLIENT COMMENTS	05-22-15	JPLS
L	REVISION	05-28-15	JR
M	CITY COMMENTS #2	06-01-15	HE

ATC # 283680
CH67348G
LINCOLN PARK
800 MARSEILLAISE PL
AURORA, IL 60506

OWNER:
FOX VALLEY PARK DISTRICT
101 W ILLINOIS AURORA, IL 60506

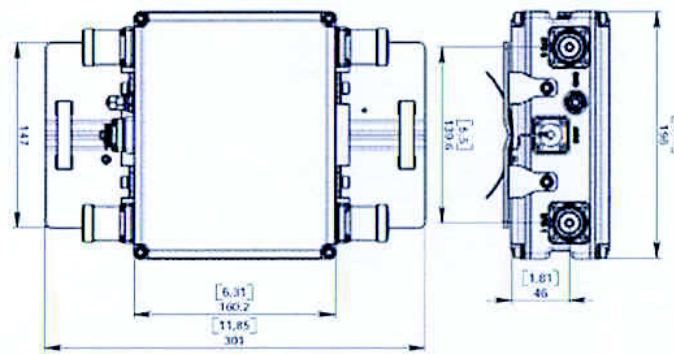
EQUIPMENT DETAILS

ELEVATIONS
A-4 08-07-15
MHE



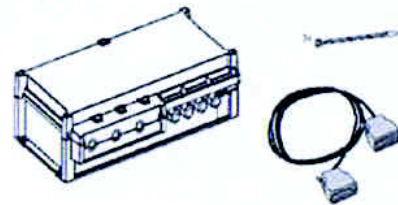
DIMENSIONS:
 Height 260.0 mm | 10.2 in
 Width 170.0 mm | 6.7 in
 Depth 94.0 mm | 3.7 in
 Weight 6.6 kg | 14.6 lb

NEW TMA (ANDREW ETW190VS12UB)
 SCALE: N.T.S.



DIMENSIONS:
 Height 160.0 mm | 6.3 in
 Depth 78.0 mm | 3.1 in
 Weight 5.0 kg | 11.0 lb

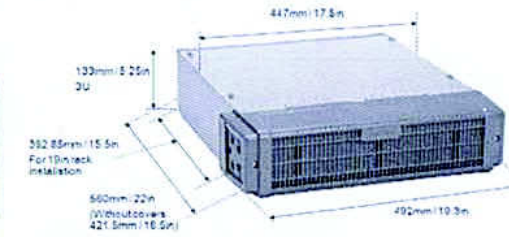
NEW TMA (ANDREW ETW200VS12UB)
 SCALE: N.T.S.



NEW FSEB (ALARM BOX)
 SCALE: N.T.S.

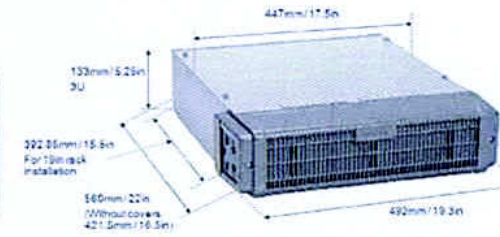
Flexi Multiradio RF Module FRIE

- < 25 liters
- < 25 kg
- 3 height units
- IP65
- 35 to +55 °C



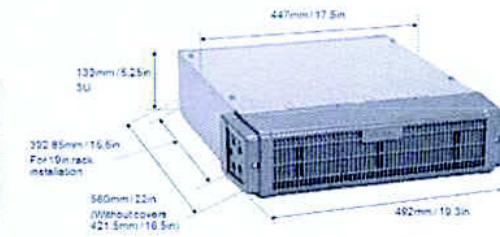
Flexi Multiradio RF Module FXFC

- < 25 liters
- < 25 kg
- 3 height units
- IP65
- 35 to +55 °C



Flexi Multiradio BTS System Module ESMB

- < 15 liters
- < 15 kg
- 3 height units
- IP65
- 35 to +55 °C



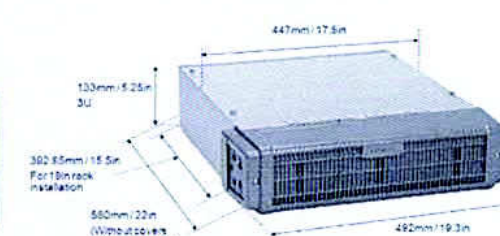
Flexi Multiradio BTS System Module FSME

- < 23 liters
- < 23 kg
- 3 height units
- IP65
- 35 to +55 °C



Flexi Multiradio BTS System Module FSMF

- < 15 liters
- < 15 kg
- 3 height units
- IP65
- 35 to +55 °C



PROPOSED RF/SYSTEM MODULES
 ESMB/FSME/FSMF/
 SCALE: N.T.S.



AMERICAN TOWER®
 ATC SERVICES, INC.
 8505 FREEPORT PARKWAY
 SUITE 135
 IRVING, TX 75063
 NYSE:AMT

T-Mobile
 T-MOBILE
 8550 WEST BRYN MAWR AVE
 SUITE 100
 CHICAGO, IL 60631
 MAIN: (773) 444-5400

CONCORDIA, LTD.
 A PROFESSIONAL DESIGN FIRM
 LICENSE # 184 004952-D.B.A.
CONCORDIA WIRELESS, INC
 361 RANDY ROAD
 UNIT 101
 CAROL STREAM, IL 60188
 MAIN: (847) 981-0801

DRAWN BY: BG	CHECKED BY: GMS
CHECKED BY: RH	APPROVED BY: GMS

No.	Revision/Issue	Date	Initial
A	LEASE EXHIBIT	12/09/14	KC
B	REVISED LEASE EXHIBIT	01/16/15	KC
C	90% REVIEW	01/06/15	AL
D	FINAL	02/09/15	AL
E	NEW LOCATION LEASE EXHIBIT	02/19/15	BG
F	NEW LOCATION 90% REVIEW	02/25/15	JR
G	FINAL	03/04/15	BG
H	REDESIGN	04/02/15	KC
I	UTILITY REVISION	04/09/15	JR
J	CITY COMMENTS	05/18/15	JR
K	CLIENT COMMENTS	05/22/15	JR/PS
L	REVISION	05/29/15	JR
M	CITY COMMENTS #2	06/01/15	HE

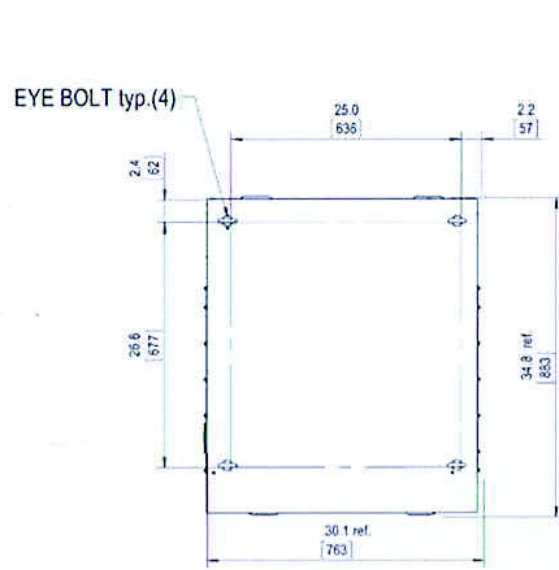
--	--	--	--

ATC # 283680
 CH67348G
 LINCOLN PARK
 800 MARSEILLAISE PL
 AURORA, IL 60506

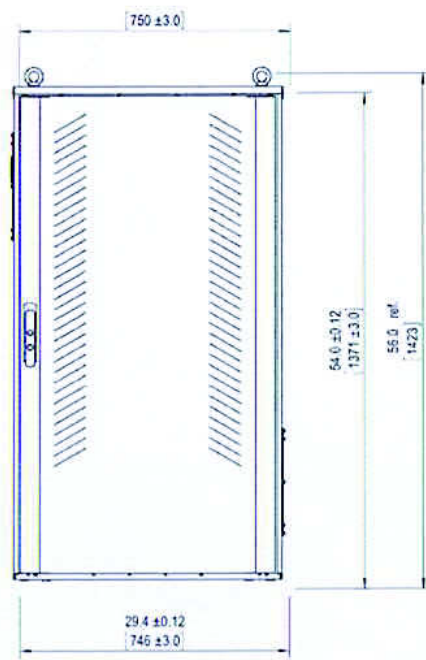
OWNER:
 FOX VALLEY PARK DISTRICT
 101 W ILLINOIS AURORA, IL 60506

EQUIPMENT
 SPECIFICATIONS

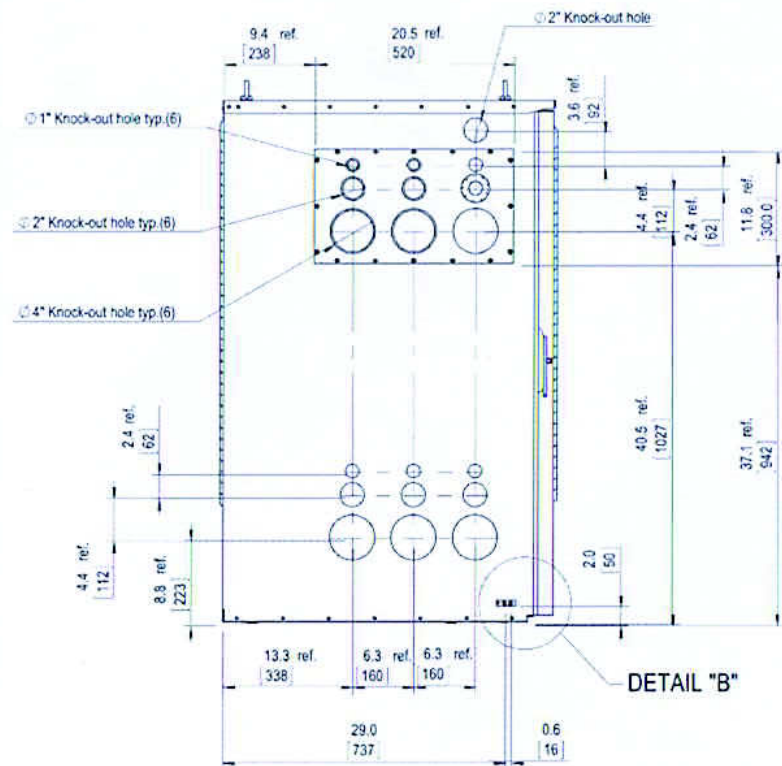
ELEVATIONS
A-4A 08-07-15
 M/HE



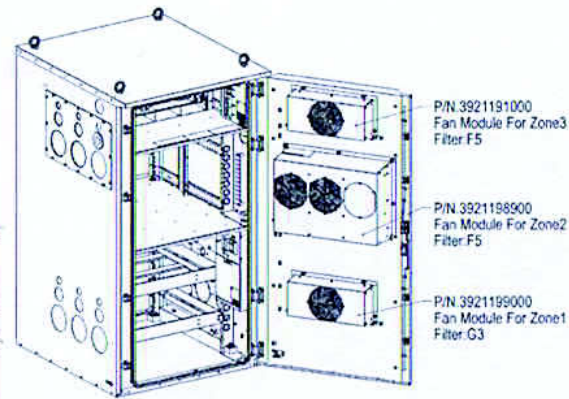
TOP VIEW
SCALE: N.T.S.



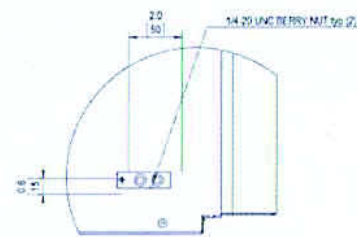
FRONT VIEW
SCALE: N.T.S.



SIDE VIEW
SCALE: N.T.S.

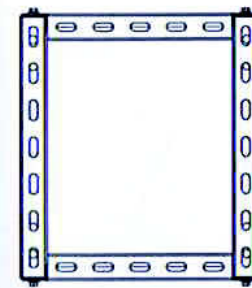


ISOMETRIC VIEW
SCALE: N.T.S.

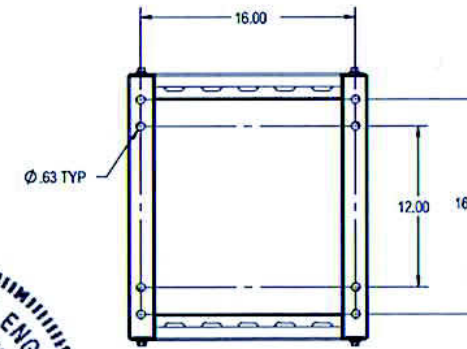


DETAIL B

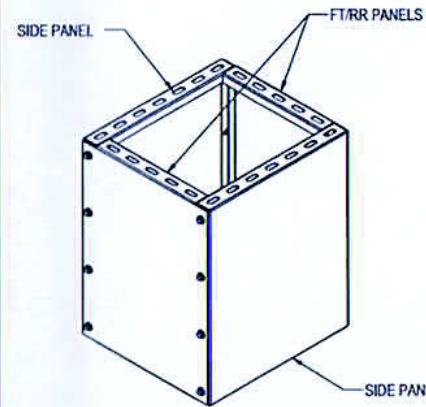
1 SITE SUPPORT CABINET SPECIFICATIONS
SCALE: N.T.S.



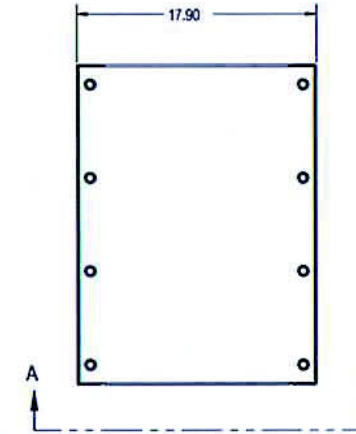
TOP VIEW
SCALE: N.T.S.



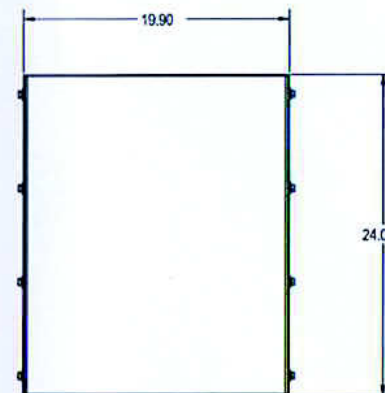
**SECTION A-A
BOTTOM VIEW**
SCALE: N.T.S.



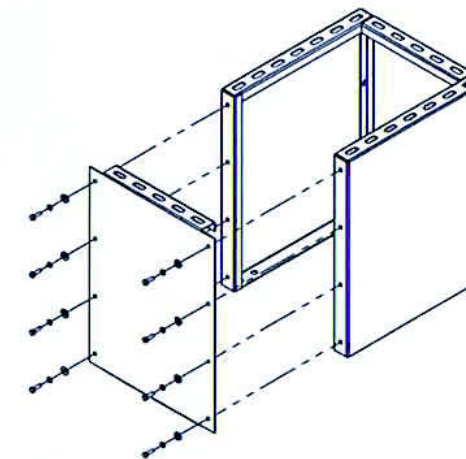
ISOMETRIC
SCALE: N.T.S.



FRONT VIEW
SCALE: N.T.S.



SIDE VIEW
SCALE: N.T.S.



BOLT LAYOUT ISOMETRIC
SCALE: N.T.S.

2 CUBE SPECIFICATIONS
SCALE: N.T.S.

AMERICAN TOWER
ATC SERVICES, INC.
8505 FREEPORT PARKWAY
SUITE 135
IRVING, TX 75063
NYSE:AMT

T-Mobile
T-MOBILE
8550 WEST BRYN MAWR AVE
SUITE 100
CHICAGO, IL 60631
MAIN: (773) 444-5400

CONCORDIA, LTD
A PROFESSIONAL DESIGN FIRM
LICENSE # 184 004952-D.B.A.
CONCORDIA WIRELESS, INC
361 RANDY ROAD
UNIT 101
CAROL STREAM, IL 60188
MAIN: (847) 981-0801

DRAWN BY: BG CHECKED BY: GMS
CHECKED BY: RH APPROVED BY: GMS

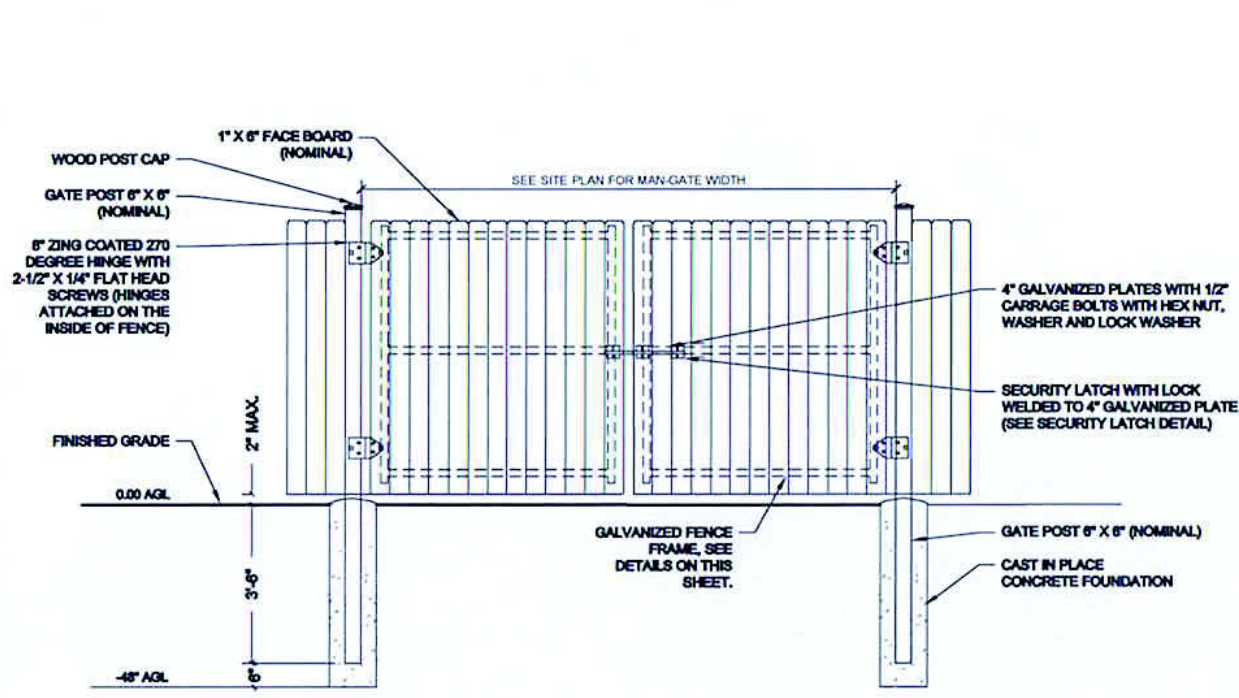
No.	Revision/Issue	Date	Initial
A	LEASE EXHIBIT	12/09/14	KC
B	REVISED LEASE EXHIBIT	01/16/15	KC
C	90% REVIEW	01/26/15	AL
D	FINAL	02/09/15	AL
E	NEW LOCATION LEASE EXHIBIT	02/15/15	BG
F	NEW LOCATION 90% REVIEW	02/25/15	JR
G	FINAL	03/04/15	BG
H	REDESIGN	04/02/15	KC
I	UTILITY REVISION	04/20/15	JR
J	CITY COMMENTS	05/18/15	JR
K	CLIENT COMMENTS	05/22/15	JR/PS
L	REVISION	05/29/15	JR
M	CITY COMMENTS #2	06/01/15	HE

ATC # 283680
CH67348G
LINCOLN PARK
800 MARSEILLAISE PL
AURORA, IL 60506

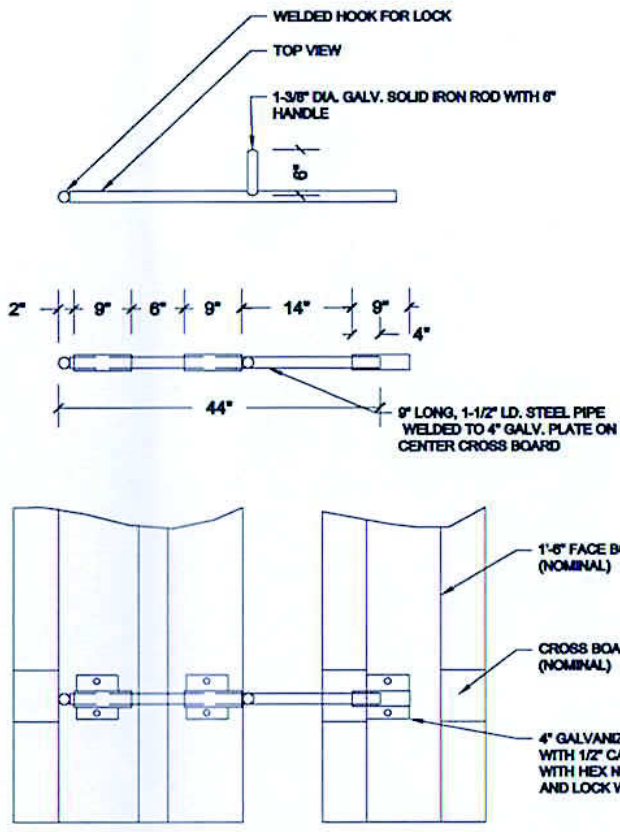
OWNER:
FOX VALLEY PARK DISTRICT
101 W ILLINOIS AURORA, IL 60506

**SITE SUPPORT CABINET
& CUBE SPECIFICATIONS**

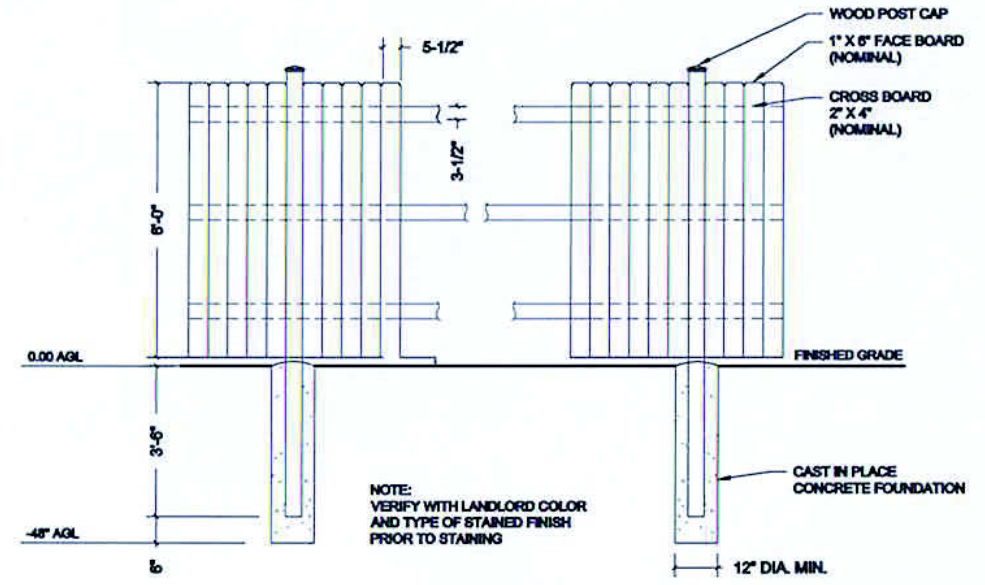
ELEVATIONS
A-4B 08-07-15
M/HE



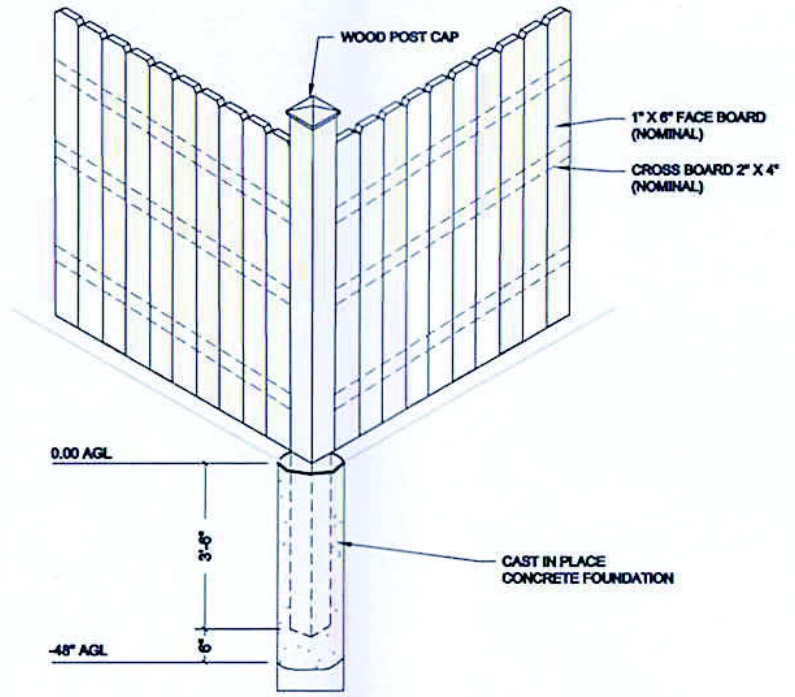
1 FENCE DOUBLE SWING GATE
SCALE: 1"=4' (1"=8' IF 11X17 SHEET SIZE)



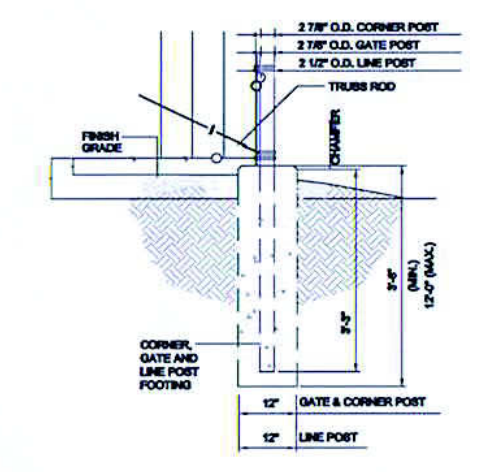
3 SECURITY LATCH DETAIL
SCALE: 1"=2' (1"=4' IF 11X17 SHEET SIZE)



2 FENCE SECTION DETAIL
SCALE: 1"=4' (1"=8' IF 11X17 SHEET SIZE)



4 CORNER DETAIL
SCALE: 1"=4' (1"=8' IF 11X17 SHEET SIZE)



5 DETAIL "B" POST DETAIL
SCALE: 1"=3' (1"=6' IF 11X17 SHEET SIZE)

SOLID WOOD FENCE STYLE NOTES & GENERAL SPECIFICATIONS

- ALL POSTS AND RAILS SHALL BE ROUGH SAWN OF "NO. 1 STRUCTURAL" GRADE, PRESSURE TREATED WITH A WOOD PRESERVATIVE NON-TOXIC TO SURROUNDING PLANT MATERIAL, IN ACCORDANCE WITH CSA STANDARD 060.2 AND COMPATIBLE WITH STAINING REQUIREMENTS BELOW STAIN TO MATCH FENCE BOARDS.
- ALL FENCE BOARDS AND PLANKS SHALL BE ROUGH SAWN OF "QUALITY FENCING" GRADE, FINISHED WITH PENETRATING STAIN WITH PRESERVATIVE, CONFORMING TO CGSB STANDARDS 1-GP145M AND 204M, APPLIED TO ALL SURFACES PRIOR TO INSTALLATION AND ON ANY CUTS THEREAFTER.
- LINE POSTS SHALL BE MINIMUM 8.0 FT. IN LENGTH AND AT LEAST (STANDARD) 4" X 4".
- CORNER POSTS SHALL BE MINIMUM 8.0 FT. IN LENGTH AND AT LEAST (STANDARD) 6" X 6".
- FENCE RAILS (MIN 3) SHALL BE MAXIMUM 7.5 FT. IN LENGTH AND AT LEAST (STANDARD) 2" X 4".
- CAP RAILS SHALL BE AT LEAST (STANDARD) 2" X 6". CANT TO DRAIN.
- THE FINISHED HEIGHT OF OPAQUE FENCING SHALL BE AT LEAST 6.0 FT.
- ALL NAILS USED IN FENCE CONSTRUCTION SHALL MEET THE FOLLOWING SPECIFICATIONS:
8.1 MINIMUM GAUGE OF NAILS USED - #9, COMMON IN POST/RAIL CONNECTIONS
8.2 MINIMUM GAUGE OF NAILS USED - #11.5, COMMON IN RAIL/FENCE BOARD CONNECTIONS
8.3 GALVANIZED - CSA G164
- LINE POSTS SHALL BE PLACED NO MORE THAN 8.0 FT. O.C. AND BE FIRMLY ANCHORED IN THE SOIL TO A DEPTH OF NOT LESS THAN 2.0 FT.
- THE FENCE SHALL BE CONSTRUCTED IN ACCORDANCE WITH THESE SPECIFICATIONS AND DETAILS PROVIDED IN THESE DRAWINGS WHICH FORMS PART OF THESE SPECIFICATIONS.



AMERICAN TOWER
ATC SERVICES, INC.
8505 FREEPORT PARKWAY
SUITE 135
IRVING, TX 75063
NYSE:AMT

T-Mobile
T-MOBILE
8550 WEST BRYN MAWR AVE.
SUITE 100
CHICAGO, IL 60631
MAIN: (773) 444-5400

CONCORDIA, LTD.
A PROFESSIONAL DESIGN FIRM
LICENSE # 184 004992-D.B.A.
CONCORDIA WIRELESS, INC.
361 RANDY ROAD
UNIT 101
CAROL STREAM, IL 60188
MAIN: (847) 981-0801

DRAWN BY: BG CHECKED BY: GMS
CHECKED BY: RH APPROVED BY: GMS

No.	Revision/Issue	Date	Initial
A	LEASE EXHIBIT	12/09/14	KC
B	REVISED LEASE EXHIBIT	01/16/15	KC
C	90% REVIEW	01/26/15	AL
D	FINAL	02/06/15	AL
E	NEW LOCATION LEASE EXHIBIT	02/16/15	DG
F	NEW LOCATION 90% REVIEW	02/25/15	JR
G	FINAL	03/04/15	BG
H	RE DESIGN	04/03/15	KC
I	UTILITY REVISION	04/29/15	JR
J	CITY COMMENTS	05/16/15	JR
K	CLIENT COMMENTS	05/22/15	JR/PS
L	REVISION	05/29/15	JR
M	CITY COMMENTS #2	06/01/15	HE

ATC # 283680
CH67348G
LINCOLN PARK
800 MARSEILLAISE PL
AURORA, IL 60506

OWNER:
FOX VALLEY PARK DISTRICT
101 W ILLINOIS AURORA, IL 60506

NEW FENCE DETAILS

ELEVATIONS
A-5
08-07-15
MHE