

LEGEND	
	NEW POLE MOUNTED LIGHT FIXTURE
	NEW POLE MOUNTED LIGHT FIXTURE
	NEW POLE MOUNTED LIGHT FIXTURE
	NEW BOLLARD LIGHT FIXTURE
	ACCESSIBLE PARKING SPACE

**WRIGHT
HEEREMA
ARCHITECTS**

140 South Dearborn, Suite 200
Chicago, Illinois 60603 | whrchs.com

CONSULTANTS

Geotechnical Engineer
Testing Service Corporation
360 South Main Place
Cord Stream, IL 60188
T: 630-462-2600

Civil Engineer
Manhard Consulting
900 Woodlands Parkway
Vernon Hills, IL 60061
T: 847-634-5550

Structural Engineer
CS Associates, Inc.
4532 W. 103rd Street
Oak Lawn, IL 60453-4381
T: 708-422-5306; F: 708-422-3962

MEP/FP Engineer
Weber Consultants, Ltd.
116 West Illinois Street, Suite 6E
Chicago, IL 60654-2732
T: 312-644-6190

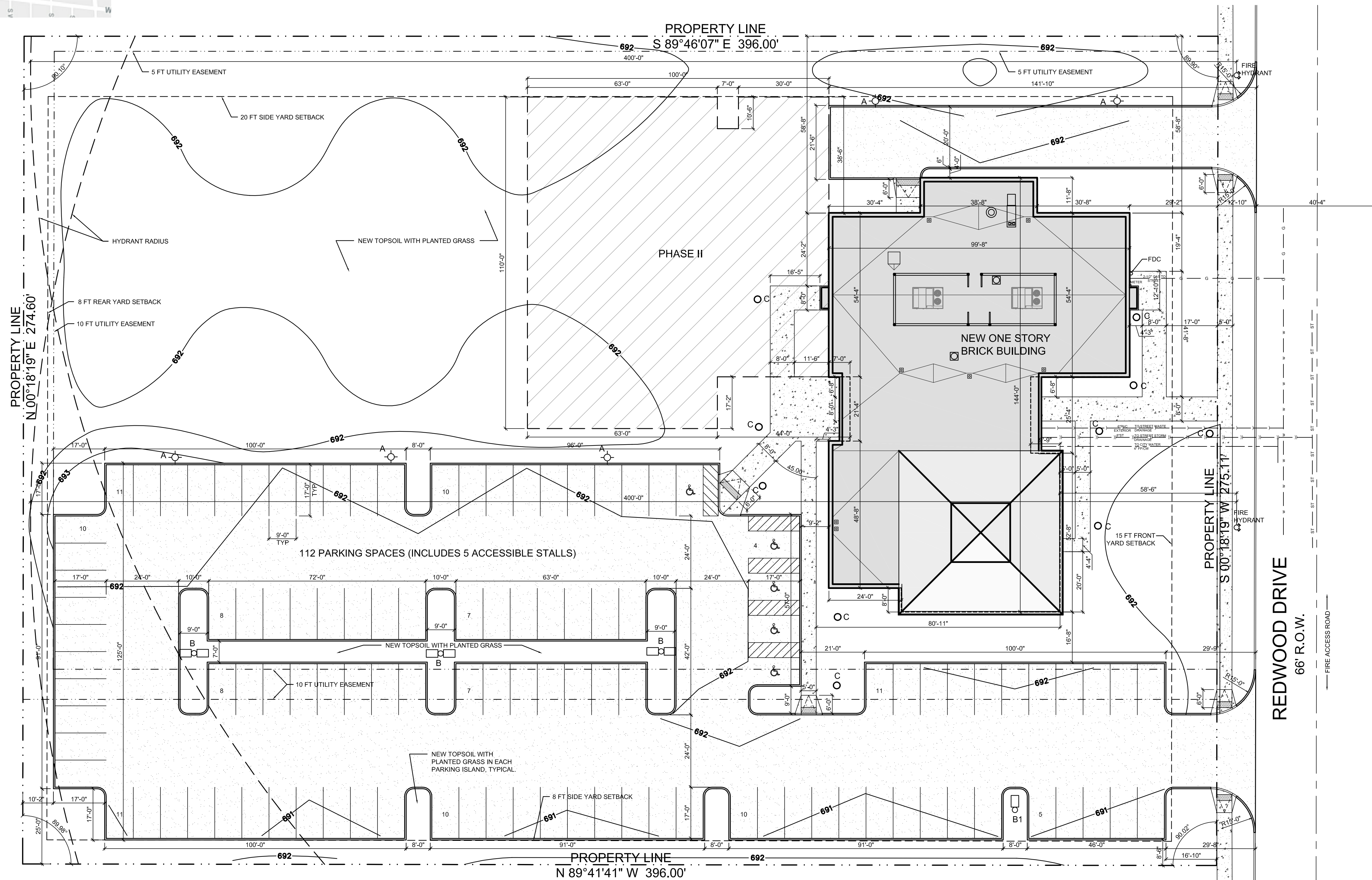
Food Services Consultant
S2O Consultants, Inc.
530 N. Wood St Unit C
Chicago, IL 60622
T: 224-717-1999

OWNER / DEVELOPER



Salvation Army - Aurora Corps
437 E. Galena Blvd
Aurora, IL 60505-3484
T: 630-897-7265; F: 630-897-7304

DST Project Number	2015.213
Owner/Tenant/Developer Company (or Full Name of Petitioner)	The Salvation Army - An Illinois Corporation
Non-Profit Organization	Yes
Subdivision Name	
Subdivision Unit/Phase	
Subdivision Lot Number	
Tax/Parcel Identification Number(s) (PINs):	15-18-478-008; 15-18-478-009
School District	129
Park District	FVPD
Proposed land use(s) (i.e. Single Family Detached, Retail, Manufacturing):	Commercial / Religious
Total Property Size in Square Feet	108,843
Number of Existing or Proposed Lots	2.00
Number of Existing Street Frontages	1.00
Total Property being Subdivided in Square Feet	-
Total Property being Annexed in Square Feet	-
Total Lot Coverage Square Footage (buildings and pavement)	50,283
Open space / Landscaped area in Square Feet	58,560
Site Disturbance in Square Feet	110,536.00
Tributary Area in Square Feet	112,000.00
Turf Detention in Square Feet	-
Wet/Wetland Retention Area in Square Feet	-
Total High-water Line for all Wet Bottom Stormwater Detention/Retention Facilities in Linear Footage	-
Total High-water Line for all Dry Bottom Stormwater Detention/Retention Facilities in Linear Footage	-
Right-of-way to be Vacated in Square Feet	-
Easements to be Vacated in Square Feet	-
Proposed New Right-of-way in Square Feet	-
Proposed New Right-of-way in Linear Feet of Centerline	-
Proposed New Easements in Square Feet	-
Total Street Frontage (existing and proposed) in Linear Feet of Curb Line	275
Construction Value in dollars	\$ 5,000,000.00
New Jobs Created in FTE	4.00



1 SITE PLAN
Scale: 1:20

**SALVATION ARMY
AURORA CORPS
550 Redwood Dr.
Aurora, IL 60506
NEW COMMUNITY CTR.**

GENERAL CONTRACTOR



R.C. Wegman Construction Company
750 Morton Avenue
Aurora, Illinois 60506
T: 630-844-3000

Architect's Project Number: 20160510

Issue Date:

ISSUE FOR BID 02/14/2019

REVISED ISSUE FOR BID 03/08/2019

Sheet Title:

SITE PLAN

Sheet Number:

A030

CONSULTANTS

Geotechnical Engineer
Testing Service Corporation
360 South Main Place
Carol Stream, IL 60188
T: 630-462-2600

Civil Engineer
Manhard Consulting
900 Woodlands Parkway
Vernon Hills, IL 60061
T: 847-634-5550

Structural Engineer
CS Associates, Inc.
4532 W. 103rd Street
Oak Lawn, IL 60453-4381
T: 708-422-5306; F: 708-422-3882

MEP/FP Engineer
Weber Consultants, Ltd.
116 West Illinois Street, Suite 6E
Chicago, IL 60654-2732
T: 312-644-6180

Food Services Consultant
S2O Consultants, Inc.
530 N. Wood St Unit C
Chicago, IL 60622
T: 224-717-1999

OWNER / DEVELOPER



Salvation Army - Aurora Corps
437 E. Galena Blvd.
Aurora, IL 60505-3484
T: 630-897-7265; F: 630-897-7304

**SALVATION ARMY
AURORA CORPS**
550 Redwood Dr.
Aurora, IL 60506

NEW COMMUNITY CTR.

GENERAL CONTRACTOR



R.C. Wegman Construction Company
750 Morton Avenue
Aurora, Illinois 60506
T: 630-844-3000

Architect's Project Number: 20160510

Issue Date: February 14, 2019

Revised Issued for Bid: March 8, 2019

Addendum 2: April 3, 2019

Issued for Permit: May 3, 2019

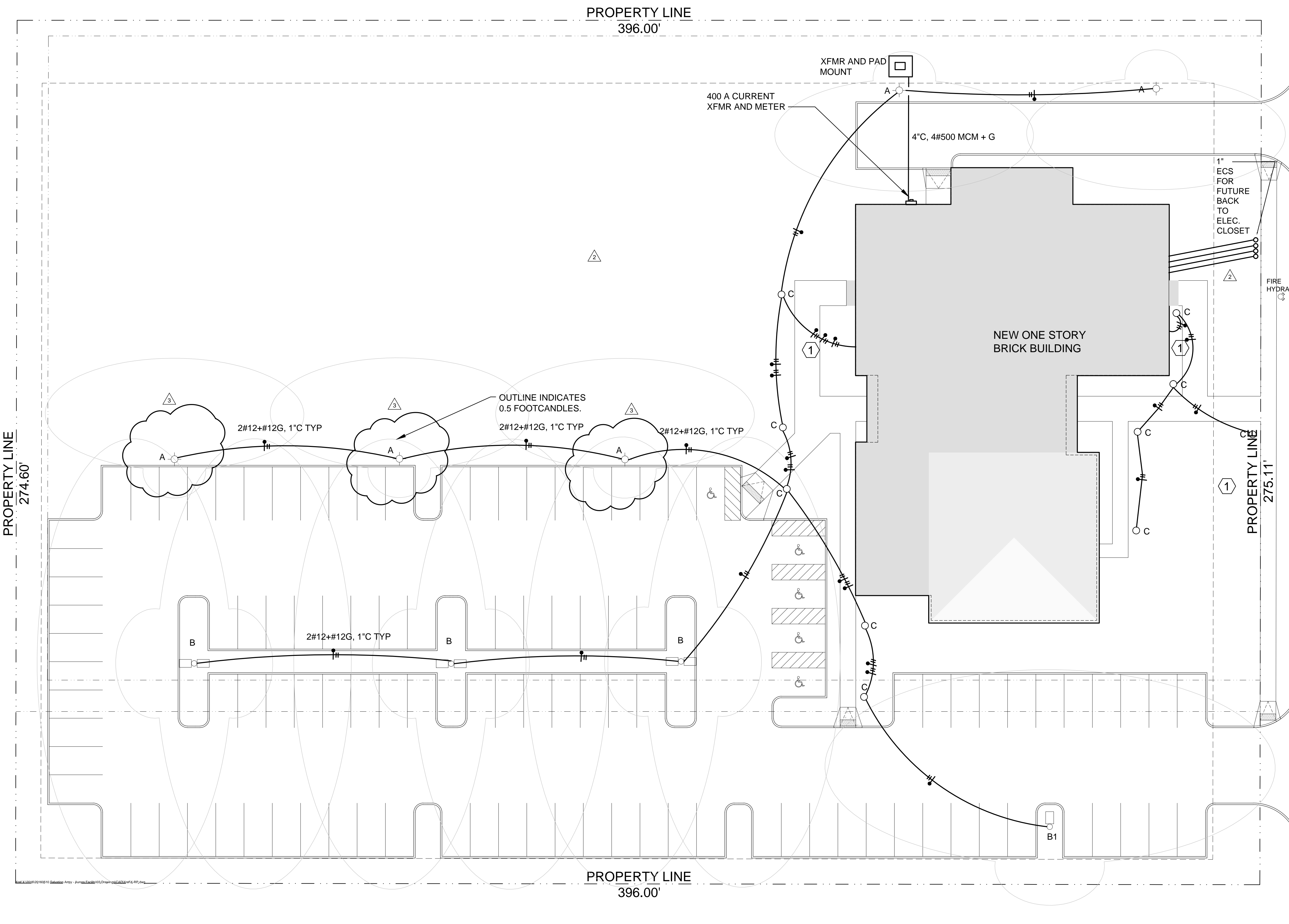
Lighting Addition: June 5 2019

Sheet Title:

**SITE LIGHTING
AND POWER PLAN**

Sheet Number:

E2.2



1 SITE LIGHTING AND POWER PLAN
SCALE: 1/16" = 1'-0"

GENERAL NOTES

1. SEE OTHER DRAWINGS AND SPECIFICATIONS FOR MORE INFORMATION.

TAG NOTES

1. TO TIMECLOCK IN ELECTRICAL ROOM. CONTROL THE A AND B/B1 FIXTURES SEPARATELY FROM THE C FIXTURES.

