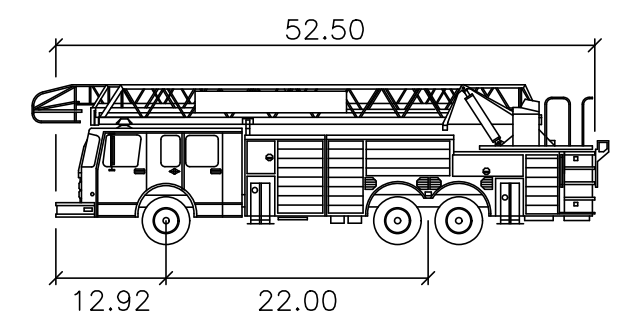
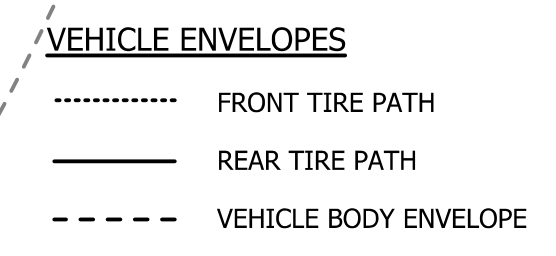
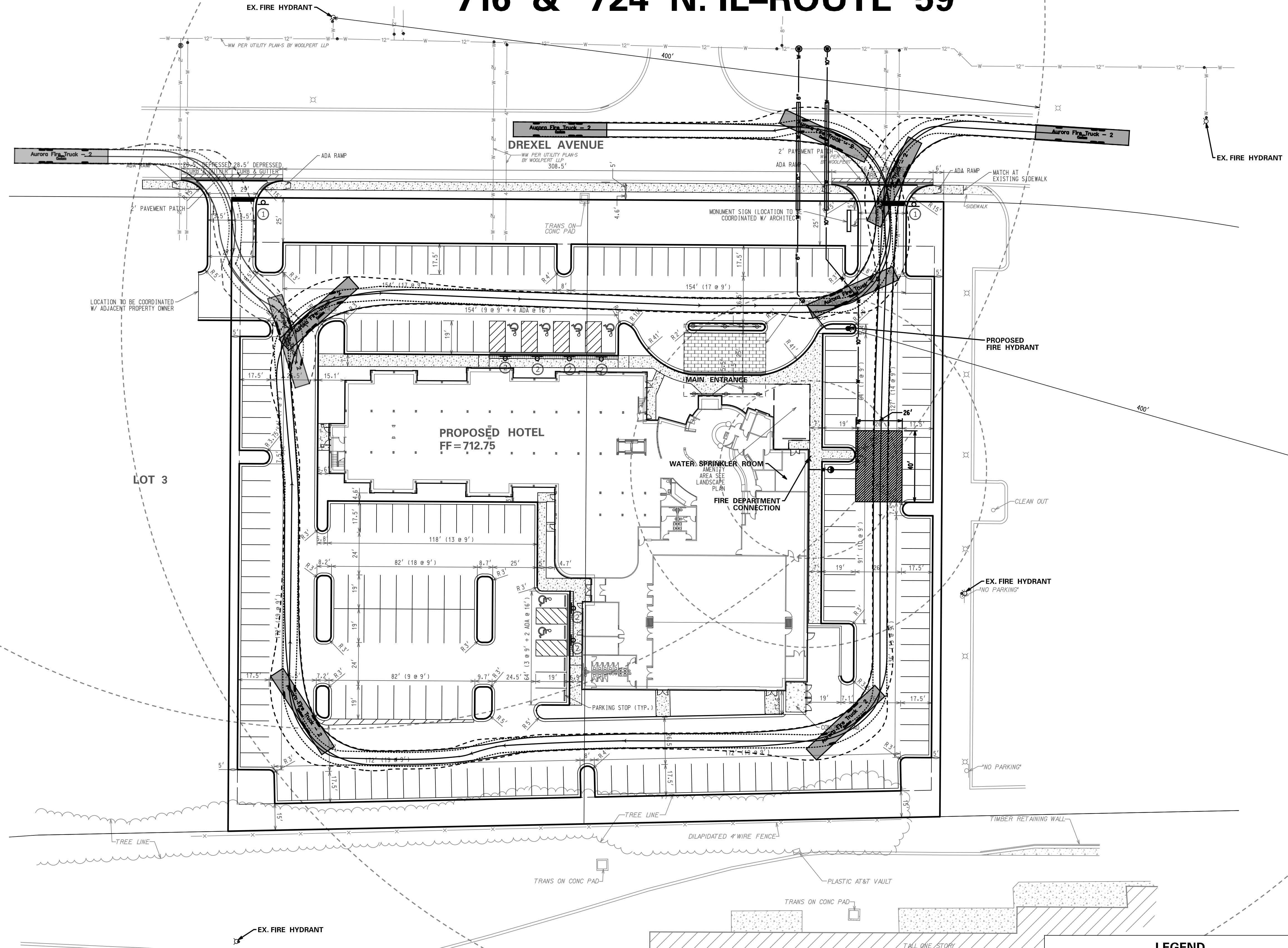
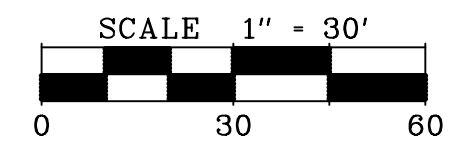
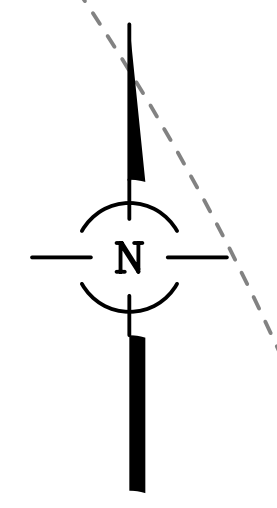


FIRE ACCESS PLAN FOR MEIJER 2ND RESUBDIVISION 716 & 724 N. IL-ROUTE 59

OWNER: PETITIONER:
KENNETH MOORE
SUBDIVISION: MEIJER 2ND
P.O. BOX 6091
AURORA, IL 60598



Fire Truck feet

| | |
|-------------------|--------|
| Width | : 8.33 |
| Track | : 7.83 |
| Lock to Lock Time | : 6.0 |
| Steering Angle | : 28.9 |

NOTE: ALL DIMENSIONS ARE TO THE FACE OF CURB UNLESS NOTED OTHERWISE

FIRE ACCESS PLAN DATA TABLE

| DESCRIPTION | VALUE | UNIT |
|--------------------|--------|-------------|
| A) BUILDING HEIGHT | 55.00 | FEET |
| B) BUILDING S.F. | 29,756 | SQUARE FEET |

C) BUILDING FIRE SUPPRESSION INFORMATION INCLUDING ANY PROPOSED USE OF SPRINKLER SYSTEMS, FIRE ALARM SYSTEMS, WHETHER FIRE EXTINGUISHERS ARE NEEDED:
- CODE COMPLIANT, BUILDING STANDARD SPRINKLER SYSTEM.
- FIRE EXTINGUISHER AND ALARM PER CODE.

D) GENERAL DESCRIPTION OF BUSINESS TO BE CONDUCTED WITHIN EACH BUILDING INCLUDING: WILL THERE BE RACK STORAGE IN THE BUILDING, WILL THERE BE STORAGE OF COMBUSTIBLE MATERIALS OVER TWELVE FEET IN HEIGHT, CLEARANCE OF SPRINKLER HEADS AND STORED MATERIALS (18" IN. MIN.):
- 29,756 SF OF HOTEL AND BANQUET FACILITY

LEGEND

| EXISTING | DESCRIPTION | PROPOSED |
|----------|-----------------------------------|----------|
| — 8" — | WATER MAIN (WITH SIZE) | — 8" — |
| ⊕ | FIRE HYDRANT | ⊕ |
| — | PRESSURE CONNECTION | — |
| — | PIPE REDUCER | — |
| ⊕ ⊗ | VALVE AND VAULT, VALVE | ⊕ ⊗ |
| ▨ | INDICATES STAGING AREA 26'X40' | ▨ |

| | |
|--|--|
| FIRE ACCESS PLAN BEST WESTERN PREMIER AURORA, ILLINOIS | <p>CONSULTING ENGINEERS SITE DEVELOPMENT ENGINEERS LAND SURVEYORS</p> <p>9575 W. Higgins Road, Suite 700, Rosemont, Illinois 60018 Phone: (847) 676-4060 Fax: (847) 676-4065</p> <p>SPACECO INC.</p> <p>FILENAME: 9558EXH-FIRE ACCESS</p> <p>DATE: 01/25/18</p> <p>JOB NO. 9558</p> <p>SHEET FE 1 OF 1</p> |
|--|--|