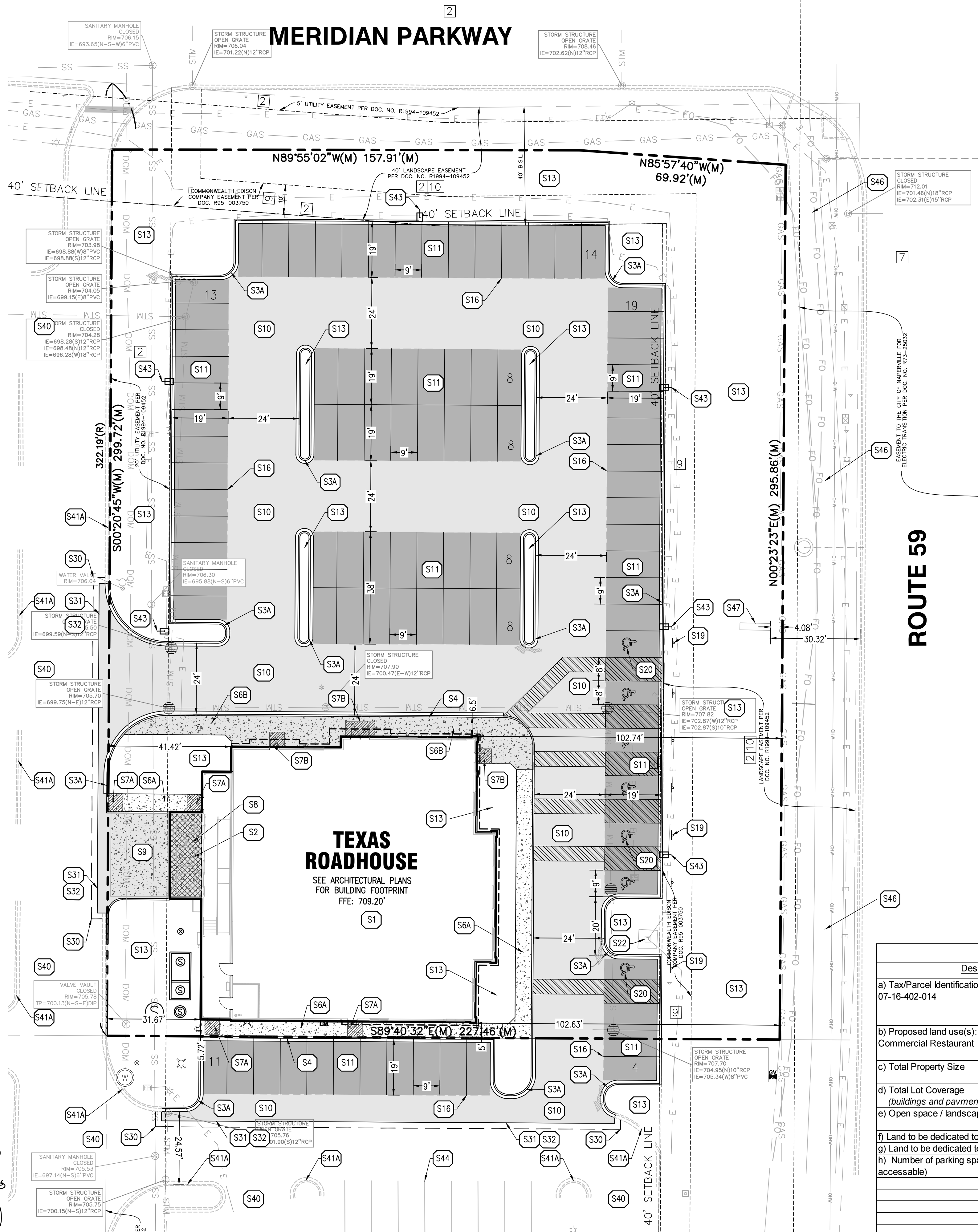
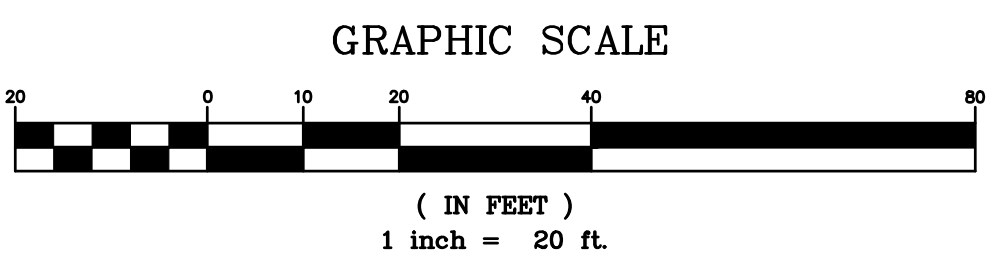
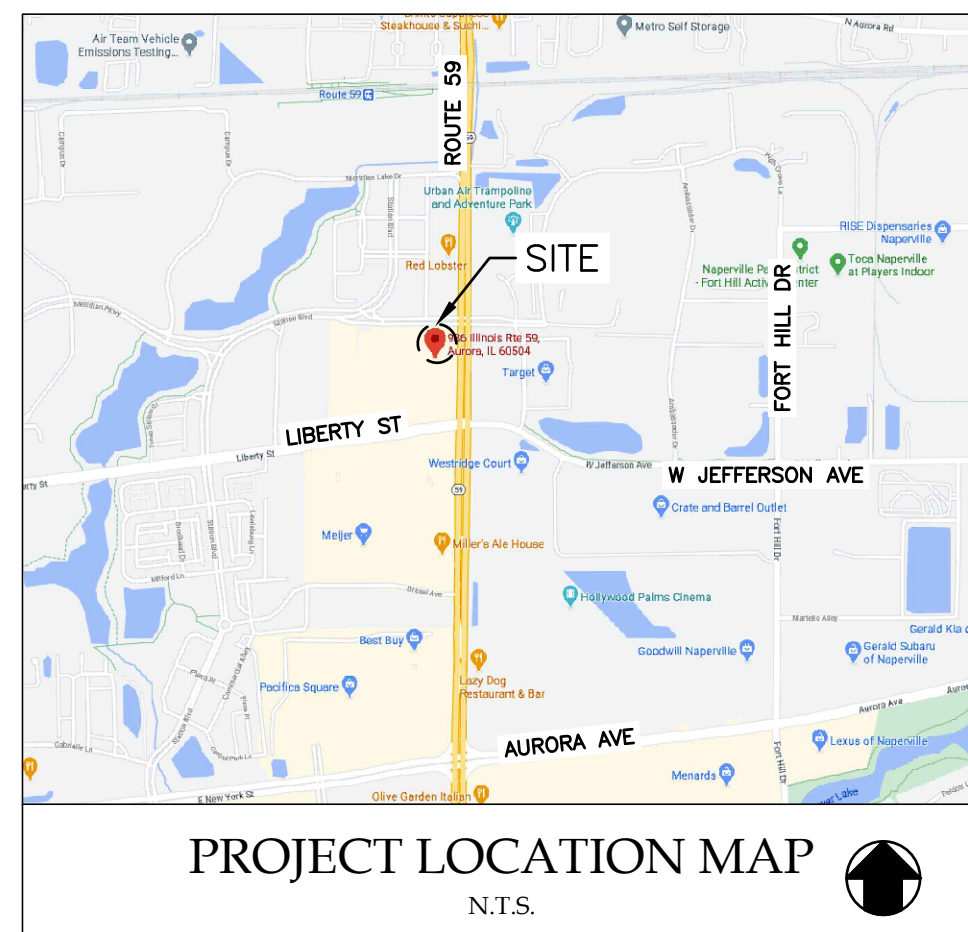


GENERAL SITE NOTES:

- CONTRACTOR SHALL OBTAIN ALL NECESSARY PERMITS PRIOR TO COMMENCEMENT OF CONSTRUCTION.
- CONTRACTOR SHALL BE RESPONSIBLE FOR PROVIDING SAFE AND ADEQUATE WORKING CONDITIONS THROUGHOUT THE DURATION OF CONSTRUCTION OF THE PROPOSED SITE IMPROVEMENTS.
- CONTRACTOR SHALL BE RESPONSIBLE FOR VERIFICATION OF ALL SITE SETBACKS, EASEMENTS AND DIMENSIONS PRIOR TO COMMENCEMENT OF CONSTRUCTION.
- ALL CONSTRUCTION MATERIALS AND WORKMANSHIP SHALL BE IN ACCORDANCE WITH THE LATEST STATE AND LOCAL GOVERNMENT CONSTRUCTION STANDARDS AND SPECIFICATIONS.
- ALL HANDICAP ACCESSIBLE SITE IMPROVEMENTS SHALL BE CONSTRUCTED IN ACCORDANCE WITH ALL FEDERAL, STATE AND LOCAL CODES AND REQUIREMENTS.
- IF DURING THE COURSE OF CONSTRUCTION THE CONTRACTOR FINDS ANY DISCREPANCIES OR CONFLICTS BETWEEN THE PROPOSED SITE IMPROVEMENTS INDICATED ON THE PLANS AND THE PHYSICAL CONDITIONS OF THE SITE, OR ANY ERRORS OR OMISSIONS WITHIN THE PLANS OR IN THE SITE LAYOUT AS PROVIDED BY THE ENGINEER, IT SHALL BE THE RESPONSIBILITY OF THE CONTRACTOR TO IMMEDIATELY NOTIFY THE ENGINEER, UNTIL AUTHORIZED TO PROCEED, ANY WORK PERFORMED BY THE CONTRACTOR AFTER SUCH A DISCOVERY WILL BE AT THE CONTRACTOR'S SOLE RISK AND EXPENSE.
- CONTRACTOR SHALL COORDINATE ALL SITE IMPROVEMENTS WITH ARCHITECTURAL PLANS. ARCHITECTURAL PLANS SHALL BE USED FOR BUILDING STAKEOUT.
- CONTRACTOR SHALL COORDINATE ALL LANDSCAPE IMPROVEMENTS, INCLUDING NEW PLANTINGS AND TURF AREA RESTORATION REQUIREMENTS, WITH LANDSCAPE PLANS.
- CONSTRUCTION SURVEY AND STAKEOUT SHALL BE THE RESPONSIBILITY OF THE CONTRACTOR.
- ALL DIMENSIONS SHOWN FROM FACE OF CURB TO FACE OF CURB OR EDGE OF PAVEMENT TO EDGE OF PAVEMENT UNLESS OTHERWISE NOTED.
- ALL CURB RADII ARE MEASURED AT THE FACE OF CURB UNLESS OTHERWISE NOTED.
- ALL NEW ASPHALT AND/OR CONCRETE PAVING SHALL MATCH EXISTING PAVEMENTS FLUSH.
- CONTRACTOR SHALL RESTORE ALL DISTURBED AREAS OUTSIDE OF CONSTRUCTION LIMITS TO ORIGINAL CONDITION OR BETTER.
- CONTRACTOR SHALL REPAIR AT HIS EXPENSE ANY DAMAGE TO EXISTING ASPHALT, CONCRETE, CURBS, SIDEWALKS, ETC. RESULTING FROM CONSTRUCTION TRAFFIC AND/OR OPERATIONS. REPAIRS SHALL BE MADE TO THE SATISFACTION OF THE OWNER AND/OR ENGINEER.
- ALL FIRE ACCESS LANES WITHIN THE PROJECT AREA SHALL REMAIN IN SERVICE, CLEAN OF DEBRIS, AND ACCESSIBLE FOR USE BY EMERGENCY VEHICLES.
- ALL DETECTABLE WARNING PLATES SHALL BE PREFORMED PLASTIC INSERTS UNLESS OTHERWISE NOTED.
- SEE GENERAL NOTES SHEET FOR ADDITIONAL INFORMATION AND REQUIREMENTS.

PROJECT INFORMATION:

SITE AREA: ±1.56 ACRES
 ZONED: B-2(S) SPECIAL USE DISTRICT
 PROPOSED BUILDING AREA: 8,000 SQ. FT.
 PROPOSED USE: RESTAURANT
 BUILDING HEIGHT: 25'-6"
 PARKING REQUIRED: 97 STALLS
 (1 STALL PER 3 SEATS AND 290 SEATS TOTAL)
 PARKING PROVIDED: 93 STALLS
 (INCLUDING 6 ADA STALLS)



PROPOSED LEGEND:

- PROPERTY LINE
 - ===== PROPOSED CONCRETE CURB AND GUTTER
 - ===== PROPOSED REVERSE PITCH CURB AND GUTTER
 - 7 PROPOSED PARKING STALL COUNT
 - PROPOSED SIGN
 - PROPOSED LIGHT POLE
 - PROPOSED STORM SEWER STRUCTURES
 - PROPOSED SANITARY SEWER STRUCTURES
 - PROPOSED SANITARY SEWER GREASE INTERCEPTOR
 - PROPOSED FIRE DEPARTMENT CONNECTION (FDC)
 - PROPOSED GAS METER
 - PROPOSED ELECTRIC METER, CT CABINET AND DISCONNECT
- NOTE: SEE SHEET C1.0 FOR EXISTING LEGEND

SITE KEY NOTES:

- S1 PROPOSED TEXAS ROADHOUSE BUILDING (SEE ARCHITECTURAL AND STRUCTURAL PLANS FOR ADDITIONAL INFORMATION AND DETAILS)
- S2 PROPOSED TRASH ENCLOSURE (SEE ARCHITECTURAL AND STRUCTURAL PLANS FOR ADDITIONAL INFORMATION AND DETAILS)
- S3A PROPOSED CONCRETE CURB AND GUTTER
- S4 PROPOSED REVERSE PITCH CONCRETE CURB AND GUTTER (TBD)
- S5 PROPOSED MONOLITHIC CONCRETE CURB AND SIDEWALK
- S6A PROPOSED CONCRETE SIDEWALK
- S6B PROPOSED INTEGRAL BLACK CONCRETE SIDEWALK
- S7A PROPOSED CONCRETE LANDING (SEE STRUCTURAL PLANS FOR ADDITIONAL INFORMATION AND DETAILS)
- S7B PROPOSED INTEGRAL BLACK COLORED CONCRETE LANDING (SEE STRUCTURAL PLANS FOR ADDITIONAL INFORMATION AND DETAILS)
- S8 PROPOSED HEAVY DUTY INTEGRAL BLACK COLORED CONCRETE (SEE STRUCTURAL PLANS FOR ADDITIONAL INFORMATION AND DETAILS)
- S9 PROPOSED HEAVY DUTY INTEGRAL BLACK COLORED CONCRETE SLAB (SEE GEOTECHNICAL REPORT FOR ADDITIONAL INFORMATION AND DETAILS)
- S10 PROPOSED ASPHALT PAVEMENT
- S11 PROPOSED HEAVY DUTY ASPHALT PAVEMENT
- S13 PROPOSED LANDSCAPE AREA (SEE LANDSCAPE PLANS FOR ADDITIONAL INFORMATION AND DETAILS)
- S16 PROPOSED 4" PAVEMENT STRIPING PER LOCAL CODE
- S19 PROPOSED HANDICAP ACCESSIBLE PARKING SIGN PER LOCAL CODE (TYP. OF 6)
- S20 PROPOSED HANDICAP ACCESSIBLE PARKING STALL STRIPING AND SYMBOL PER LOCAL CODE (TYP.)
- S22 EXISTING TRANSFORMER TO REMAIN
- S30 PROPOSED BUTT JOINT
- S31 FULL DEPTH SAW CUT
- S32 PROPOSED FULL DEPTH ASPHALT REMOVAL AND REPLACEMENT MATCH EXISTING. PAVEMENT TO BE FLUSH WITH EXISTING.
- S40 EXISTING ASPHALT PAVEMENT TO REMAIN
- S41A EXISTING CONCRETE CURB AND GUTTER TO REMAIN
- S43 PROPOSED LIGHT POLE
- S44 EXISTING PAVEMENT STRIPING TO REMAIN
- S46 EXISTING SIDEWALK TO REMAIN
- S47 EXISTING SIGN BASE TO REMAIN AND BE REUSED FOR PROPOSED MONUMENT SIGN.

Development Data Table: Final Plan				
Description	Value	Unit	Description	Value Unit
a) Tax/Parcel Identification Number(s) (PINs): 07-16-402-014			j) Total Number of Residential Dwelling Units	0 units
			i. Gross Density	0.00 du/acre
			ii. Net Density	0.00 Net Density
b) Proposed land use(s): Commercial Restaurant			k) Number of Single Family Dwelling Units	0 units
			i. Gross Density	0.00 du/acre
			ii. Net Density	0.00 Net Density
			iii. Unit Square Footage (average)	0 square feet
c) Total Property Size	1.564	Acres	iv. Bedroom Mix	0% % 1 bdr
d) Total Lot Coverage (buildings and pavement)	68127.84	Square feet		0% % 2 bdr
	44349	Square feet		20% % 3 bdr
	65%	Percent		80% % 4 bdr
e) Open space / landscaping	23802	Square feet	v. Number of Single Family Corner Lots	0 units
	35%	Percent	h) Number of Single Family Attached Dwelling Units	0 units
f) Land to be dedicated to the School District	0	Acres	i. Gross Density	0.00 du/acre
g) Land to be dedicated to the Park District	0	Acres	ii. Net Density	0.00 Net Density
h) Number of parking spaces provided (individually accessible)	96	spaces	iii. Unit Square Footage (average)	0 square feet
i. surface parking lot	96	spaces	iv. Bedroom Mix	0% % 1 bdr
perpendicular	89	spaces		90% % 2 bdr
parallel	0	spaces		10% % 3 bdr
angled	0	spaces		0% % 4 bdr
handicapped	7	spaces	m) Number of Multifamily Dwelling Units	0 units
ii. enclosed	0	spaces	i. Gross Density	0.00 du/acre
iii. bike	0	racks	ii. Net Density	0.00 Net Density
i) Number of buildings	1		iii. Unit Square Footage (average)	0 square feet
i. Number of stories	1	stories	iv. Bedroom Mix	0% Efficiency
ii. Building Square Footage (typical)	8000	square feet		40% % 1 bdr
iii. Square Footage of retail floor area	5309	square feet		50% % 2 bdr
iv. First Floor Building Square Footage (typical)	8000	square feet		10% % 3 bdr

ISSUE/REVISION RECORD

DATE	DESCRIPTION
04/08/21	PERMIT SET
05/05/21	PERMIT RESUBMITTAL

PROFESSIONAL SEAL



PROFESSIONAL IN CHARGE

KERI WILLIAMS
 PROFESSIONAL ENGINEER
 LICENSE NO. 062-058662

PROJECT MANAGER

EDWARD GOSS

QUALITY CONTROL

EDWARD GOSS

DRAWN BY

MITCH HEFFERNAN

PROJECT NAME

TEXAS ROADHOUSE

AURORA ILLINOIS

**986 ILLINOIS RTE 59
 AURORA, IL 60504**



PROJECT NUMBER

20200881.0

SHEET TITLE

FINAL PLAN

SHEET NUMBER

FP-1

MERIDIAN PARKWAY

ROUTE 59

TEXAS ROADHOUSE

SEE ARCHITECTURAL PLANS
FOR BUILDING FOOTPRINT
FFE: 709.20'

GRAPHIC SCALE

(IN FEET)
1 inch = 20 ft.

Calculation Summary					
Label	Qty	Avg	Max	Min	Avg/Min
EXTENDED	1.43	6.8	0.0	N.A.	N.A.
PARKING LOT SURFACE	3.15	6.0	1.0	3.15	6.00

LIGHT LEVELS ARE MAINTAINED FOOT-CANDLES, INITIAL LEVELS ARE SLIGHTLY HIGHER

Luminaire Schedule					
Symbol	Qty	Label	Arrangement	Lum. Lumens	LLF
6	A	SINGLE	27494	0.900	206
1	F9	SINGLE	5698	0.900	42

NOTE: LIGHT LEVEL AT THE PROPERTY LINES NOT TO EXCEED 1.0 FOOT-CANDLE
FIXTURES ARE 206W 4000K LED
POLES ARE 25'-0" WITH AN OVERALL FIXTURE HEIGHT OF 27'-6" A.F.G.

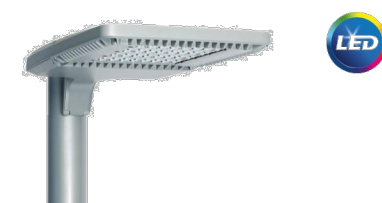
Photometric Data Table			
Description		Value	Unit
Total proposed external lumens		7	Lumens
Total square footage of area to be illuminated.		67,954	Square Feet
Fixture #		Value	Unit
1	i) Type of Fixture (i.e. Pole, Wall Mounted)	Pole	
	ii) manufacturer and model number(s)	Philips ECF-S	
	iii) Number of these Fixtures Shown	6	Fixtures
	iv) Lamp source type (bulb type, i.e. high pressure sodium, LED)	LED	
	v) Lumen output and wattage per Fixture	206	Lumen/Wattage
	vi) Mounting Height / Fixture Height	27'-6"	Feet
Fixture #		Value	Unit
2	i) Type of Fixture (i.e. Pole, Wall Mounted)	Wall Mounted	
	ii) manufacturer and model number(s)	FFLED39N	
	iii) Number of these Fixtures Shown	1	Fixtures
	iv) Lamp source type (bulb type, i.e. high pressure sodium, LED)	LED	
	v) Lumen output and wattage per Fixture	42	Lumen/Wattage
	vi) Mounting Height / Fixture Height	27'-6"	Square Feet



Site & Area

EcoForm

ECF-S small area light



Project: Texas Roadhouse
Location: Aurora (Naperville), IL
Cat.No.: ECF-S-64L-1A-NW-G2-AR-4-UNV-BZ
Type: A
Lamps: Qty:

Gardco EcoForm Gen-2 combines economy with performance in an LED area luminaire. Capable of delivering up to 27,800 lumens or more in a compact, low profile LED luminaire, EcoForm offers a new level of customer value. EcoForm features an innovative retrofit arm kit, simplifying site conversions to LED by eliminating the need to drill additional holes in most existing poles. Integral control systems available for further energy savings. Includes Service Tag, our innovative way to provide assistance throughout the life of the product.

STEEL SQUARE POLES

DIMENSIONS

SDN - No 2-3/8" (60mm) O.D. x 4-3/4" (121mm) Tenon

SOBS, SOBS - Bolt-On Mount 2-Bolt Pattern

SOI - No Mounting Holes

SF - Single Flood Pole Preparation

Hand-hole 14-3/8" (4.3m - 11.8m)

12" (305mm) Standard

Optional Base Cover

Projection

(4) Anchor Bolts

Foundation By Other

Hand-hole 14-3/8" (4.3m - 11.8m)

12" (305mm) Standard

Optional Base Cover

Projection

(4) Anchor Bolts

Foundation By Other

Hand-hole 14-3/8" (4.3m - 11.8m)

12" (305mm) Standard

Optional Base Cover

Projection

(4) Anchor Bolts

Foundation By Other

Hand-hole 14-3/8" (4.3m - 11.8m)

12" (305mm) Standard

Optional Base Cover

Projection

(4) Anchor Bolts

Foundation By Other

Hand-hole 14-3/8" (4.3m - 11.8m)

12" (305mm) Standard

Optional Base Cover

Projection

(4) Anchor Bolts

Foundation By Other

Hand-hole 14-3/8" (4.3m - 11.8m)

12" (305mm) Standard

Optional Base Cover

Projection

(4) Anchor Bolts

Foundation By Other

Hand-hole 14-3/8" (4.3m - 11.8m)

12" (305mm) Standard

Optional Base Cover

Projection

(4) Anchor Bolts

Foundation By Other

Hand-hole 14-3/8" (4.3m - 11.8m)

12" (305mm) Standard

Optional Base Cover

Projection

(4) Anchor Bolts

Foundation By Other

Hand-hole 14-3/8" (4.3m - 11.8m)

12" (305mm) Standard

Optional Base Cover

Projection

(4) Anchor Bolts

Foundation By Other

Hand-hole 14-3/8" (4.3m - 11.8m)

12" (305mm) Standard

Optional Base Cover

Projection

(4) Anchor Bolts

Foundation By Other

Hand-hole 14-3/8" (4.3m - 11.8m)

12" (305mm) Standard

Optional Base Cover

Projection

(4) Anchor Bolts

Foundation By Other

Hand-hole 14-3/8" (4.3m - 11.8m)

12" (305mm) Standard

Optional Base Cover

Projection

(4) Anchor Bolts

Foundation By Other

Hand-hole 14-3/8" (4.3m - 11.8m)

12" (305mm) Standard

Optional Base Cover

Projection

(4) Anchor Bolts

Foundation By Other

Hand-hole 14-3/8" (4.3m - 11.8m)

12" (305mm) Standard

Optional Base Cover

Projection

(4) Anchor Bolts

Foundation By Other

Hand-hole 14-3/8" (4.3m - 11.8m)

12" (305mm) Standard

Optional Base Cover

Projection

(4) Anchor Bolts

Foundation By Other

Hand-hole 14-3/8" (4.3m - 11.8m)

12" (305mm) Standard

Optional Base Cover

Projection

(4) Anchor Bolts

Foundation By Other

Hand-hole 14-3/8" (4.3m - 11.8m)

12" (305mm) Standard

Optional Base Cover

Projection

(4) Anchor Bolts

Foundation By Other

Hand-hole 14-3/8" (4.3m - 11.8m)

12" (305mm) Standard

Optional Base Cover

Projection

(4) Anchor Bolts

Foundation By Other

Hand-hole 14-3/8" (4.3m - 11.8m)

12" (305mm) Standard

Optional Base Cover

Projection

(4) Anchor Bolts

Foundation By Other

Hand-hole 14-3/8" (4.3m - 11.8m)

12" (305mm) Standard

Optional Base Cover

Projection

(4) Anchor Bolts

Foundation By Other

Hand-hole 14-3/8" (4.3m - 11.8m)

12" (305mm) Standard

Optional Base Cover

Projection

(4) Anchor Bolts

Foundation By Other

Hand-hole 14-3/8" (4.3m - 11.8m)

12" (305mm) Standard

Optional Base Cover

Projection

(4) Anchor Bolts

Foundation By Other

Hand-hole 14-3/8" (4.3m - 11.8m)

12" (305mm) Standard

Optional Base Cover

Projection

(4) Anchor Bolts

Foundation By Other

Hand-hole 14-3/8" (4.3m - 11.8m)

12" (305mm) Standard

Optional Base Cover

Projection

(4) Anchor Bolts

Foundation By Other

Hand-hole 14-3/8" (4.3m - 11.8m)

12" (305mm) Standard

Optional Base Cover

Projection

(4) Anchor Bolts

Foundation By Other

Hand-hole 14-3/8" (4.3m - 11.8m)

12" (305mm) Standard

Optional Base Cover

Projection

(4) Anchor Bolts

Foundation By Other

Hand-hole 14-3/8" (4.3m - 11.8m)

12" (305mm) Standard

Optional Base Cover

Projection

(4) Anchor Bolts

Foundation By Other

Hand-hole 14-3/8" (4.3m - 11.8m)

12" (305mm) Standard

Optional Base Cover

Projection

(4) Anchor Bolts

Foundation By Other

Hand-hole 14-3/8" (4.3m - 11.8m)

12" (305mm) Standard

Optional Base Cover

Projection

(4) Anchor Bolts

Foundation By Other

Hand-hole 14-3/8" (4.3m - 11.8m)

12" (305mm) Standard

Optional Base Cover

Projection

(4) Anchor Bolts

Foundation By Other

Hand-hole 14-3/8" (4.3m - 11.8m)

12" (305mm) Standard

Optional Base Cover

Projection

(4) Anchor Bolts

Foundation By Other

Hand-hole 14-3/8" (4.3m - 11.8m)

12" (305mm) Standard

Optional Base Cover

Projection

(4) Anchor Bolts

Foundation By Other

Hand-hole 14-3/8" (4.3m - 11.8m)

12" (305mm) Standard

Optional Base Cover

Projection

(4) Anchor Bolts

Foundation By Other

Hand-hole 14-3/8" (4.3m - 11.8m)

12" (305mm) Standard

Optional Base Cover

Projection

(4) Anchor Bolts

Foundation By Other

Hand-hole 14-3/8" (4.3m - 11.8m)

12" (305mm) Standard

Optional Base Cover

Projection

(4) Anchor Bolts

Foundation By Other

Hand-hole 14-3/8" (4.3m - 11.8m)

12" (305mm) Standard

Optional Base Cover

Projection

(4) Anchor Bolts

Foundation By Other

Hand-hole 14-3/8" (4.3m - 11.8m)

12" (305mm) Standard

Optional Base Cover

Projection

(4) Anchor Bolts

Foundation By Other

Hand-hole 14-3/8" (4.3m - 11.8m)

12" (305mm) Standard

Optional Base Cover

Projection

(4) Anchor Bolts

Foundation By Other

Hand-hole 14-3/8" (4.3m - 11.8m)

12" (305mm) Standard

Optional Base Cover

Projection

(4) Anchor Bolts

Foundation By Other

Hand-hole 14-3/8" (4.3m - 11.8m)

12" (305mm) Standard

Optional Base Cover

Projection

(4) Anchor Bolts

Foundation By Other

Hand-hole 14-3/8" (4.3m - 11.8m)

12" (305mm) Standard

Optional Base Cover

Projection

(4) Anchor Bolts

Foundation By Other

Hand-hole 14-3/8" (4.3m - 11.8m)

12" (305mm) Standard

Optional Base Cover

Projection

(4) Anchor Bolts

Foundation By Other

Hand-hole 14-3/8" (4.3m - 11.8m)