

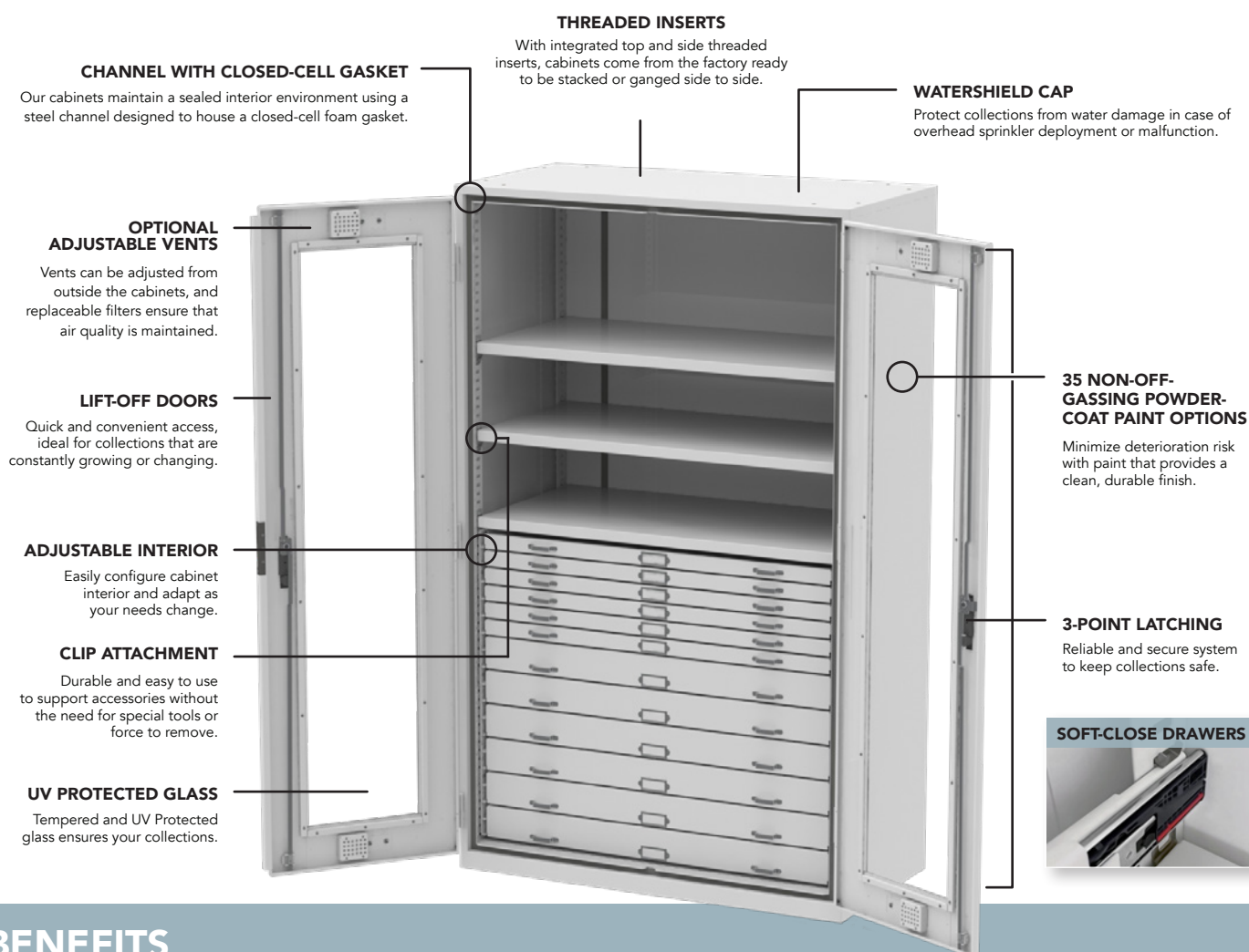
# TECH DATA

## 920 SERIES: PRESERVATION CABINET

### VERSATILITY BUILT IN.

With a reconfigurable interior and a sturdy, modular frame, the Spacesaver 920 Series offers a unique combination of versatility and strength. Fill it with trays today, and years down the road, after collections have grown or changed, the cabinet interiors can be reconfigured with soft-close drawers, hanging rods, or other accessories. These modular cabinets can also be stacked, bolted together, or mounted on compact storage systems to gain capacity within the same footprint.

**Your options are endless.**



## BENEFITS

### VERSATILITY

- Adjustable and reconfigurable interior
- Adjustable sizing to maximize use of space
- Accessories for any collection
- Array of configurations

### QUALITY

- Heavy-duty steel
- Made in the USA
- Five-year warranty

### PROVEN PERFORMANCE

- Maintains stable micro-climate
- Improves protection in extreme conditions like smoke and fire
- Water mitigation
- Soft-close drawer slides have been cycle-tested 50,000 times at maximum loaded capacity



# CABINET CONFIGURATIONS

Spacesaver’s 920 Series: Preservation Cabinet ranges from counter-height to full-height with several options in between. Counter-height cabinets can double as a work surface, and their modular design allows them to be safely and securely stacked at a later date. Full-height cabinets, on the other hand, are more cost-effective, with a lower cost per cubic foot of storage capacity.

- Inside Storage Space = Nominal Cabinet Height - 6"
- Watershield cap - Protects collections from water damage in case of overhead sprinkler deployment or malfunction
- Levelers on all cabinets: Used when static on floor, with ability to recess levelers when stacked or on base

## STANDARD DIMENSIONS\*

WIDTH	30", 36", 42", 48", 60"
DEPTH	18", 24", 30", 36"
HEIGHT	42", 60", 72", 84", 96"

\* Additional sizes available in 1" increments upon request.



# DOOR FEATURES

- Single Door – Solid or Visual Glass (less than 36" wide units only)
- Double Door – Solid or Visual Glass (36", 42", 48", 60" wide units only)
- Visual doors have tempered UV protected glass
- Door travel of 180 degrees (closed to fully opened)
- Offset hinges for side-by-side door functionality
- 3-point latching in each door (top, middle, and bottom)
- Optional screen vents with sliding closures accessible on exterior allow for proper air exchange rates inside the cabinet. By having vents accessible from the outside makes it easy to adjust air flow without having to open the cabinet
  - » Each vent comes with a replaceable charcoal filter to ensure air quality is maintained while facilitating air exchange
  - » (2) vents per door, located at top and bottom
  - » Designed with metered venting slots



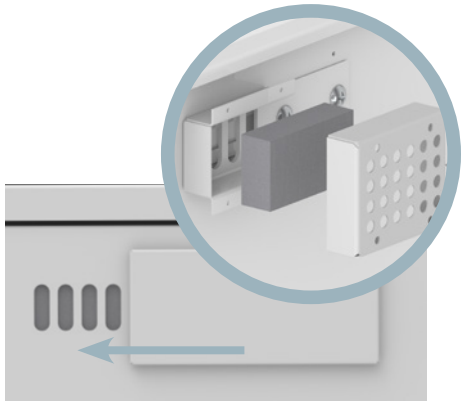
## SOLID DOOR EXAMPLE

The timeless classic to provide security and durability.



## VISUAL DOOR EXAMPLE

UV-coated glass protects collections and allows for visual inspection.



## ADJUSTABLE EXTERIOR VENTS

Optional vents facilitate air exchange. Vents can be adjusted from outside the cabinets, and replaceable filters ensure that air quality is maintained.

## HANDLE AND LOCK FEATURES

### HANSEN D-RING HANDLE



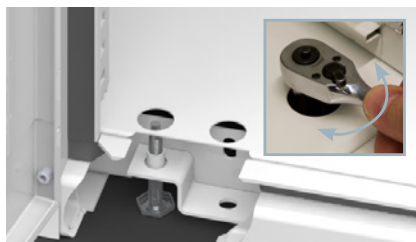
- Not available on visual doors
- Master Lock
  - » Keyed alike and keyed different available
- Non-Locking option
  - » Escutcheon plate used in lieu of lock

### EMKA STYLE HANDLE



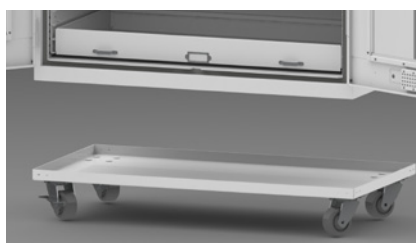
- Available on both solid and visual doors
- Lock Options (available Keyed alike and keyed different)
  - » Keyed lock integrated into handle
  - » Combination lock integrated into handle
- Non-Locking option

## MOUNTING OPTIONS AND FEATURES



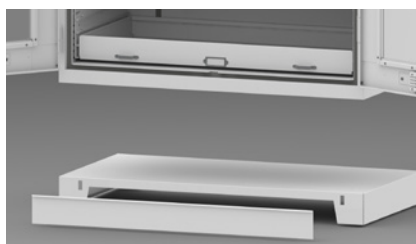
### INTEGRATED LEVELING BASE (STANDARD)

Every 920 Series cabinet comes with a fully integrated leveling base, so even stationary cabinets are never resting directly on the floor.



### OPTIONAL CASTER BASE

- Available for cabinet heights that do not exceed a 4:1 height/width and height/depth ratio.
- 6" H Base
- (4) Swivel casters - (2) with brakes



### OPTIONAL FORKLIFT BASE (STATIC)

Allows cabinets to be moved to a new location without damaging their structure.

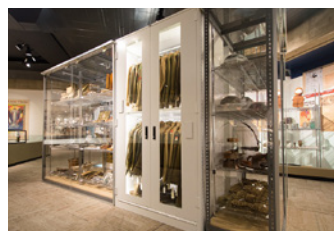
- 5" base and includes removable front cover
- Threaded inserts correspond with mounting pattern
- Same footprint as cabinet for flush fit



STACKED



BOLTED SIDE-TO-SIDE



STATIONARY



MOBILE CARRIAGES

## INTERIOR CONFIGURATIONS



### INTEGRATED CORNER POST (STANDARD)

The integrated corner post (ICP) comes standard on all 920 Series: Preservation Cabinets. It accepts a variety of accessories that can be mounted at 1" increments using clips, brackets, or mounts.

#### CLIP TYPES

- Clips are used to mount CIC panels, CORR panels, and some accessories directly to the integrated corner posts within the cabinet
- Clips do not require special tools or use of force to remove



#### ATTACHMENT CLIPS

- Used for mounting CIC and CORR panels



#### SHELF CLIPS

- Used for mounting shelves directly to the integrated corner posts

### OPTIONAL PANEL INSERTS

Maximize drawer and tray density with interchangeable inserts that mount onto the corner post system.



#### SAFETY-STOP PANEL INSERT

This Channel-in-Channel (CIC) panel style is ideal for collections that typically stay inside the cabinet. It mounts onto the corner post system and accommodates safety stop mechanisms to prevent trays from accidentally extending. The panel allows for accessories to be adjustable on 2" increments.

- Mounted with attachment clips
- 2"H channels
- Perma-slide paint is standard
- Only available in cabinet depths equal to or greater than 24"
- Only option available for shelf safety stops

#### SAFETY STOP FEATURE

Prevents trays from unintended removal from the cabinet. The interference safety stop feature will engage at about 72% of full tray extension. The safety stop may also be disengaged, allowing for full tray removal by lightly pushing down on the safety stop feature as pictured.

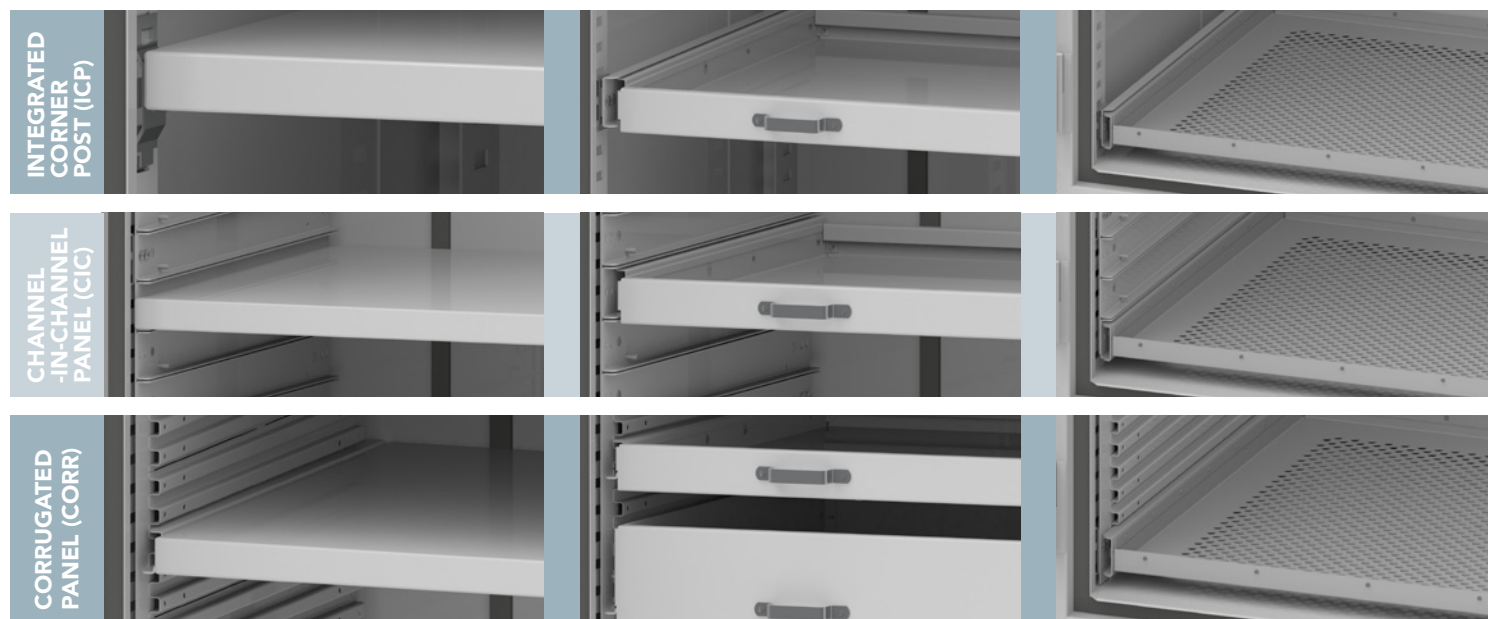


#### FULL-SLIDE PANEL INSERT

This Corrugated (CORR) panel style allows users to slide trays completely out of the cabinet for study or display. It does not accept safety stop mechanisms. The panel mounts onto the corner post system and allows for accessories to be adjustable on 1" increments.

- Multiple trays share the same CORR panel body
- Mounted with attachment clips
- Accepts trays on 1" centers
- Perma-slide paint is standard
- Only available in cabinet depths equal to or greater than 24"
- 1/2" Nominal corrugate spacing

## ACCESSORY OPTIONS AND FEATURES



### ADJUSTABLE SHELVES

- Available in ICP with clips, CIC Panel or CORR Panel
- 1 1/4" tall shelf
- CIC Panel includes safety stops
  - › Allows approximately 72% extension
- Standard Duty: 100 lb. Capacity
- Heavy Duty: 300 lb. Capacity
- Available in full or half-width for dividers



### STANDARD TRAY

- Available with individual CIC track pair, CIC Panel or CORR Panel
- CIC Panel includes safety stops
  - › Allows approximately 72% extension
- Tray heights available in 2" and 4"
- Available in full or half-width for dividers



### DESICCANT TRAY

- Available with individual CIC track pair, CIC Panel or CORR Panel
- CIC Panel includes safety stops
  - › Allows approximately 72% extension
- Tray heights available in 2"
- Available in full or half-width for dividers



### ROLLED TEXTILE SOFT-CLOSE DRAWERS

- Only available in ICP
- Mechanical slides for maximum extension
- 4" nominal height
- Rods adjustable within drawer
- Soft-close functionality protects stored collections from excessive vibration



### FULL-EXTENSION SOFT-CLOSE DRAWERS

- Only available in ICP
- Mechanical slides for maximum extension
- 3", 4", and 6" nominal height options
- Ability to mix and match drawer sizes
- Soft-close functionality protects stored collections from excessive vibration



### TEXTILE TRAY

- Only available in ICP with CIC track pair
- Includes safety stops
- Approximately 72% extension
- Tray heights available in 4"
- Rods adjustable within Tray

### HAT SHELF/COAT ROD

- Only available in ICP with clips
- Standard adjustable shelf with 1" rod
- Variable widths for use with dividers

### GARMENT ROD

- Only available in ICP with clips
- Rod is not adjustable front to back
- Available in full or half-width for dividers



## ACCESSORY OPTIONS AND FEATURES (CONTINUED)



### FULL-HEIGHT CENTER DIVIDERS

- Available in ICP with clips, CIC Panel or CORR Panel
- Only available in 42" wide or greater



### PARTIAL-HEIGHT CENTER DIVIDER

- Available in ICP with clips, CIC Panel or CORR Panel
- Only available in 42" wide or greater
- Split the cabinet vertically to allow full-width trays to be used on top portion and half-width trays on bottom portion



Spacesaver Corporation  
1450 Janesville Avenue  
Fort Atkinson, WI 53538-2798  
800.492.3434  
[www.spacesaver.com](http://www.spacesaver.com)