

# City of Aurora, IL.

---

Mobile Evaluation and Triage Thermal Cameras  
July 9, 2020

Final Version – Quantity 2

**Submitted To:**

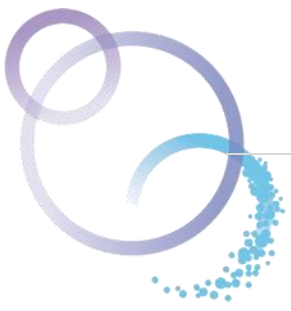
Mike Pegues  
Chief Information Officer  
City of Aurora, IL.  
40 E Downer Place  
Aurora, IL. 60505

**Submitted By:**

Tim Strueber  
[tstrueber@scientelsolutions.com](mailto:tstrueber@scientelsolutions.com)  
(630) 486-7935  
Scientel Solutions LLC

## TABLE OF CONTENTS

|  |   |
|--|---|
| INTRODUCTION.....                          | 3 |
| INCLUDED WITH THE MOBILE TRIAGE UNIT ..... | 3 |
| SUPPORT AND REMOTE CALIBRATION .....       | 3 |
| SITE SPECIFIC SCOPE OF WORK .....          | 4 |
| ASSUMPTIONS.....                           | 4 |
| WARRANTY STATEMENT .....                   | 4 |
| PRICING .....                              | 5 |
| PAYMENT MILESTONES.....                    | 5 |



## INTRODUCTION

Scientel Solutions has developed the MET – Mobile Evaluation and Triage system. This is a thermal camera system mounted on a mobile cart. It can be moved around and scanning people as they enter a building or area. The thermal camera system measures the temperature of individuals as they enter a doorway or cross past the camera. A color monitor and mini-PC are included with the system. Visual notification of a person with elevated temperature can be set at a desired threshold (eg, alarm set at over 100°F). Connectivity to the company's network is available.

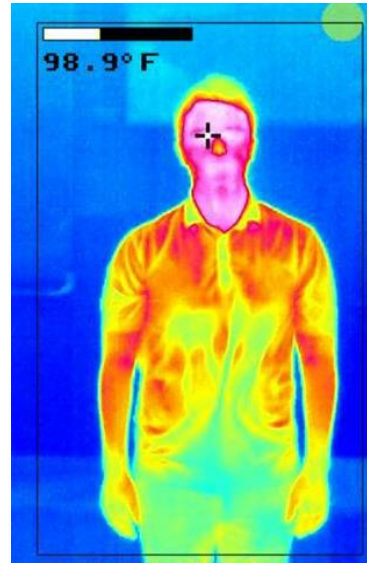


Figure 1: Thermal Camera Image  
Produced by the MET System

## INCLUDED WITH THE MOBILE TRIAGE UNIT

- Mobotix M16TR Color Camera
- Stand-Alone System (Mini-PC and 24" Monitor)
- Completely Mobile Evaluation Cart That is Easily Positioned
- Onsite Calibration and Operational Training for Staff
- On-going Remote Calibration and Support

## SUPPORT AND REMOTE CALIBRATION

Scientel will provide 24/7 support and will log in to adjust calibration and provide remote monitoring, as necessary for one year.



## SITE SPECIFIC SCOPE OF WORK

### City of Aurora, IL.

Scientel will deliver 2 fully functional MET units and provide onsite user training to the locations specified by City of Aurora.

## ASSUMPTIONS

For this proposal, Scientel has made the following assumptions:

- All METs will be configured using a standard Scientel IP scheme so that they can be access via a Remote Gateway.
- Any other network configuration outside of this scope is not included in this proposal.
- Scientel will provide introductory training and will provide remote support as needed via the Sierra Wireless Remote Gateway.

## WARRANTY STATEMENT

Scientel Solutions LLC. warrants that work will be performed in accordance with sound engineering practice and professional standards, but makes no other warranty, express or implied including the merchantability.

In the event of any error, omission, or other professional negligence or any breach of the above warranty of which Scientel Solutions, LLC is notified in writing within 90 days after system acceptance, the sole and exclusive responsibility of Scientel Solutions, LLC shall be to re-perform deficient work at its own expense, and Scientel Solutions, LLC shall have no other liability whatsoever.

In no event shall Scientel Solutions LLC. be liable, whether in contract or tort, including negligence, for loss of profit, loss of product, loss of use, or for indirect, consequential, or special damages. The liability of Scientel Solutions LLC for injury or damage to persons or property arising out of this work shall not exceed the lesser of the total amount received by Scientel Solutions LLC. pursuant to this contract or

\$1,000,000, whether in contract or tort, including negligence and shall not extend to liability arising out of the negligence or other fault of the client.

## PRICING

| Item                 | Quantity | List Price   | Discount   | New Price    | Extended Price      |
|----------------------|----------|--------------|------------|--------------|---------------------|
| MET Unit             | 2        | \$ 18,500.00 | <b>40%</b> | \$ 11,050.00 | \$22,100.00         |
| *Black Body Radiator | 2        | \$ 1,500.00  |            |              | \$ 3,000.00         |
| Support              | 2        | \$ 2,500.00  |            |              | \$ 5,000.00         |
| <b>Grand Total</b>   |          |              |            |              | <b>\$ 30,100.00</b> |

\* Calibration unit for ensuring ongoing accuracy

## PAYMENT MILESTONES

100% will be invoiced on unit delivery. Shipping and Taxes not included.

Please issue a Purchase Order to the attention of:

Tim Strueber  
Scientel Solutions, LLC  
2021 N Eola Road  
Aurora, IL 60502  
[tstrueber@scientelsolutions.com](mailto:tstrueber@scientelsolutions.com)  
630-486-7935

THANK YOU FOR YOUR BUSINESS!

