

FIRE PLAN

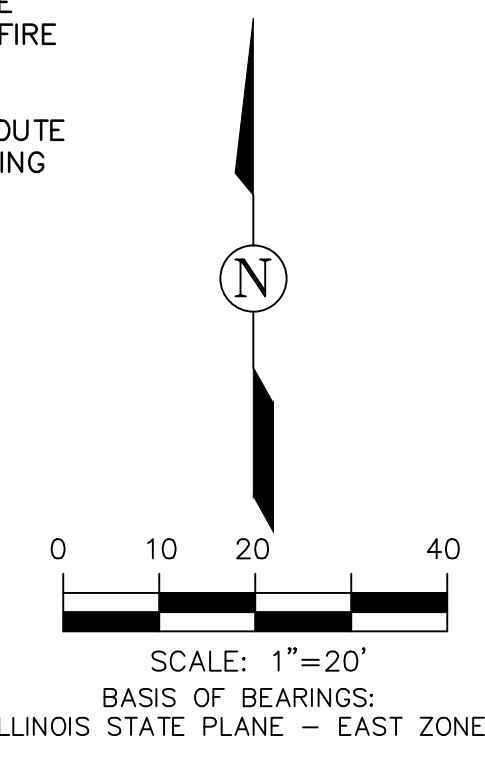
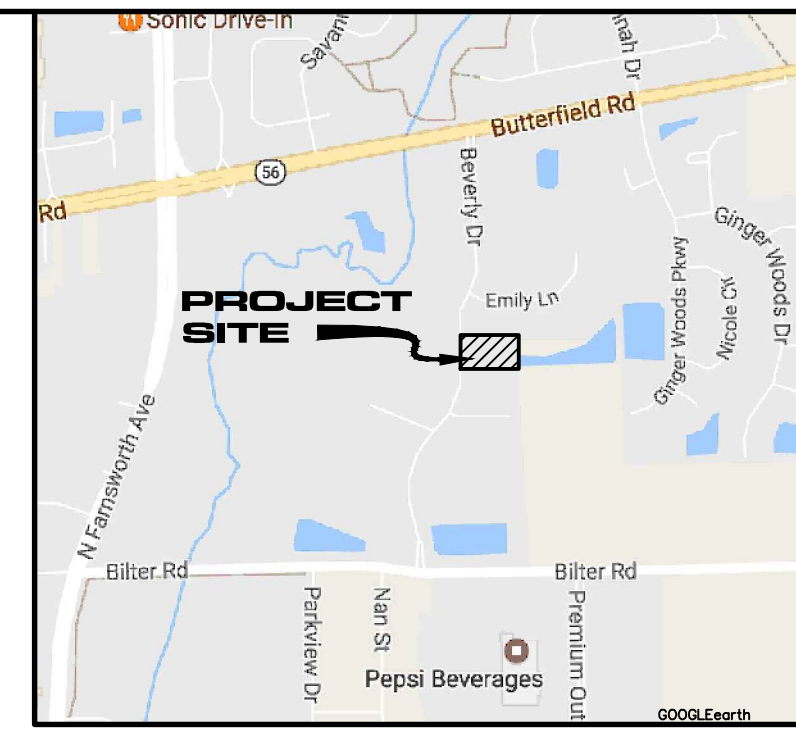
FOR

2731 BEVERLY DRIVE

AURORA, ILLINOIS

PART OF THE NORTH HALF OF SECTION 1, TOWNSHIP 38 NORTH, RANGE 8, EAST OF THE THIRD PRINCIPAL MERIDIAN, IN THE CITY OF AURORA, KANE COUNTY, ILLINOIS

PIN: 15-01-203-002



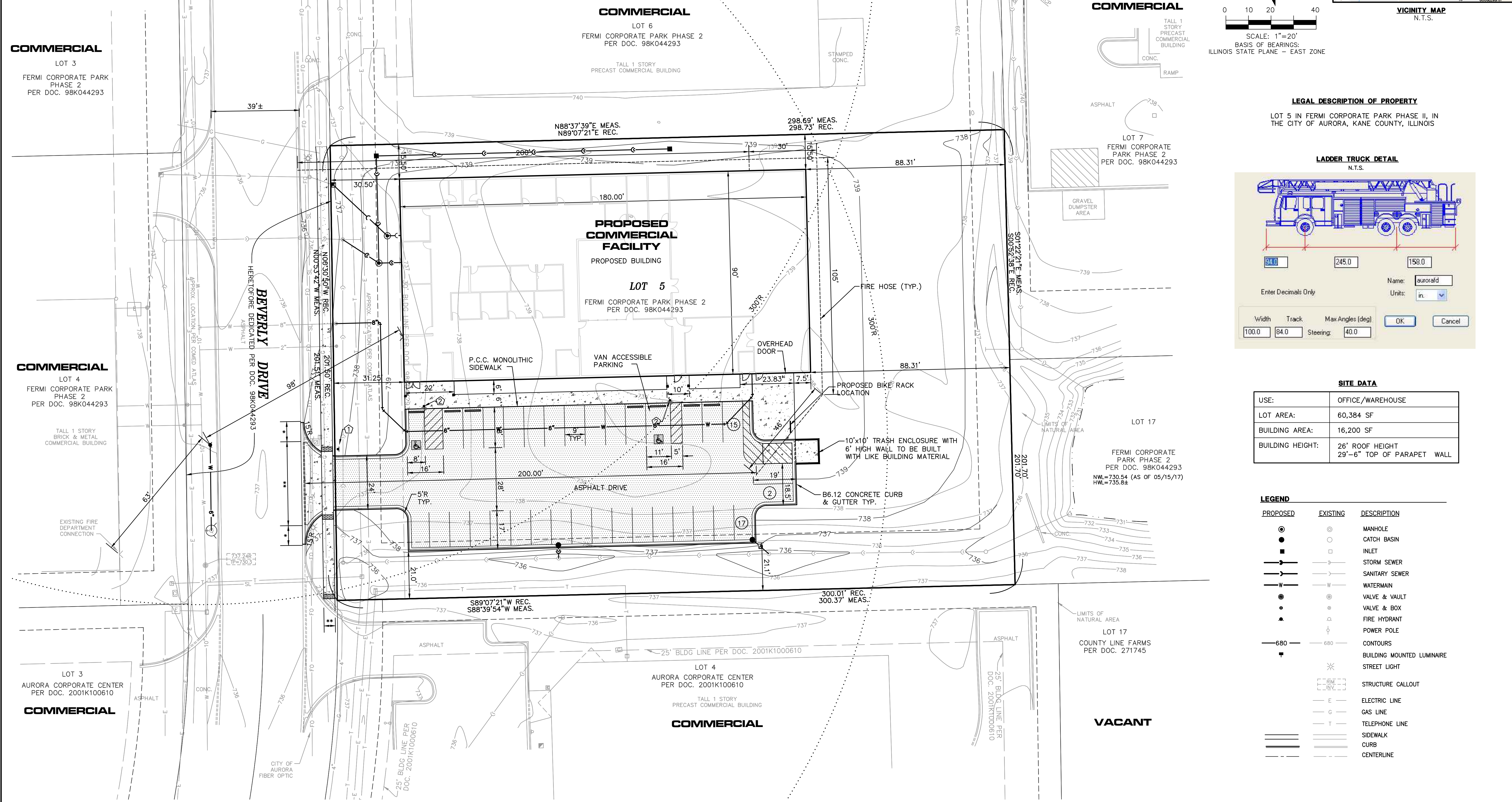
- NOTES:
- THE BUILDING'S FIRE SUPPRESSION WILL INCLUDE SPRINKLER SYSTEM, FIRE ALARM SYSTEM, AND FIRE EXTINGUISHERS.
 - THE PROPOSED EMERGENCY VEHICLE ACCESS ROUTE SHALL BE PROPERLY MAINTAINED DURING BUILDING CONSTRUCTION.

ABBREVIATIONS

000.00' M	MEASURED DATA
000.00' C	COMPUTED DATA
000.00' R	RECORD DATA
P.U. & D.E.	PUBLIC UTILITY & DRAINAGE EASEMENT
R=	RADIUS
A=	ARC LENGTH
PIN	PERMANENT INDEX NUMBER
P.U. & D.E.	PUBLIC UTILITY & DRAINAGE EASEMENT
L.E. & S.E.	LANDSCAPE & SIDEWALK EASEMENT

LINE TYPE LEGEND

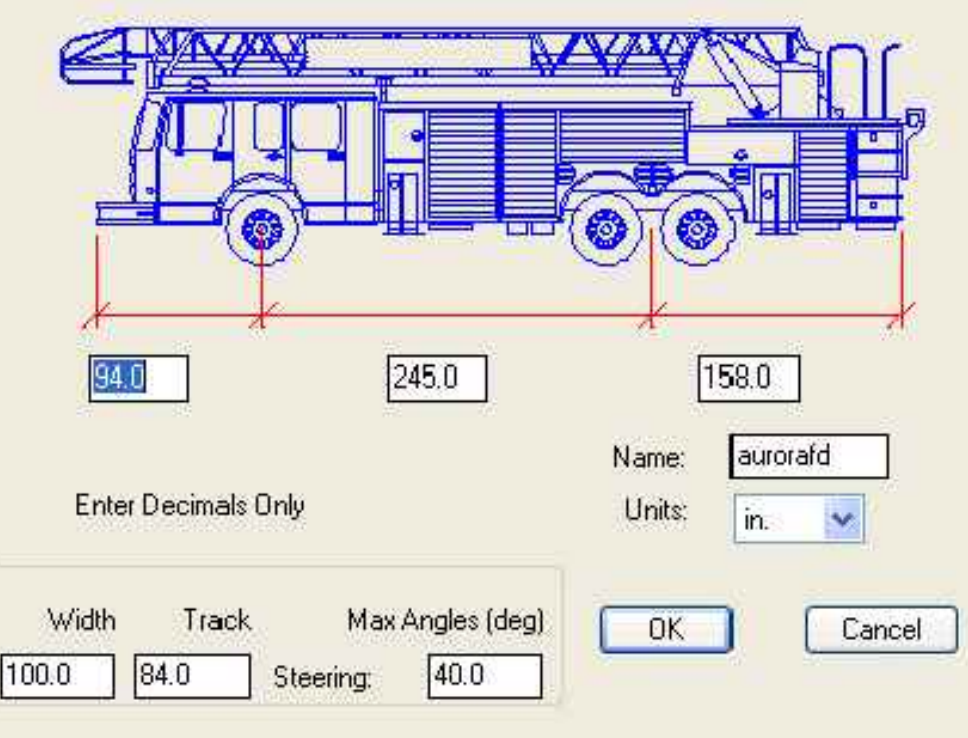
	BOUNDARY LINE
	ADJOINER LOT LINE
	CENTER LINE
	RIGHT OF WAY
	EASEMENT LINE
	BUILDING LINE
	SECTION LINE
	UNDERLYING LOT LINE



LEGAL DESCRIPTION OF PROPERTY

LOT 5 IN FERMI CORPORATE PARK PHASE II, IN THE CITY OF AURORA, KANE COUNTY, ILLINOIS

LADDER TRUCK DETAIL



SITE DATA

USE:	OFFICE/WAREHOUSE
LOT AREA:	60,384 SF
BUILDING AREA:	16,200 SF
BUILDING HEIGHT:	26' ROOF HEIGHT 29'-6" TOP OF PARAPET WALL

LEGEND

PROPOSED	EXISTING	DESCRIPTION
		MANHOLE
		CATCH BASIN
		INLET
		STORM SEWER
		SANITARY SEWER
		WATERMAIN
		VALVE & VAULT
		VALVE & BOX
		FIRE HYDRANT
		POWER POLE
		CONTOURS
		BUILDING MOUNTED LUMINAIRE
		STREET LIGHT
		STRUCTURE CALLOUT
		ELECTRIC LINE
		GAS LINE
		TELEPHONE LINE
		SIDEWALK
		CURB
		CENTERLINE

© COPYRIGHT 2017 ROAKE AND ASSOCIATES, INC. ALL RIGHTS RESERVED

ROAKE AND ASSOCIATES, INC.
CONSULTING ENGINEERS • LAND SURVEYORS • PLANNERS
1884 QUINCY AVENUE, SUITE 100A • NAPERVILLE, ILLINOIS 60564
TEL (630) 365-3232 • FAX (630) 365-3267

PREPARED FOR:
QT9 SOFTWARE
1323 BOND STREET, SUITE 103
NAPERVILLE, ILLINOIS 60563
TEL. (630) 592-5022
FAX. (866) 913-5022

REVISIONS					
NO.	DATE	DESCRIPTION	NO.	DATE	DESCRIPTION

2731 BEVERLY DRIVE - AURORA, ILLINOIS

FIRE PLAN

DRN/CKD BY: SRH/JGC	8551FIRE	FLD. BK./PG. 266/65	SHEET NO. 1
SCALE: 1"=20'	09/22/17	JOB NO.: 855.001	OF 1