

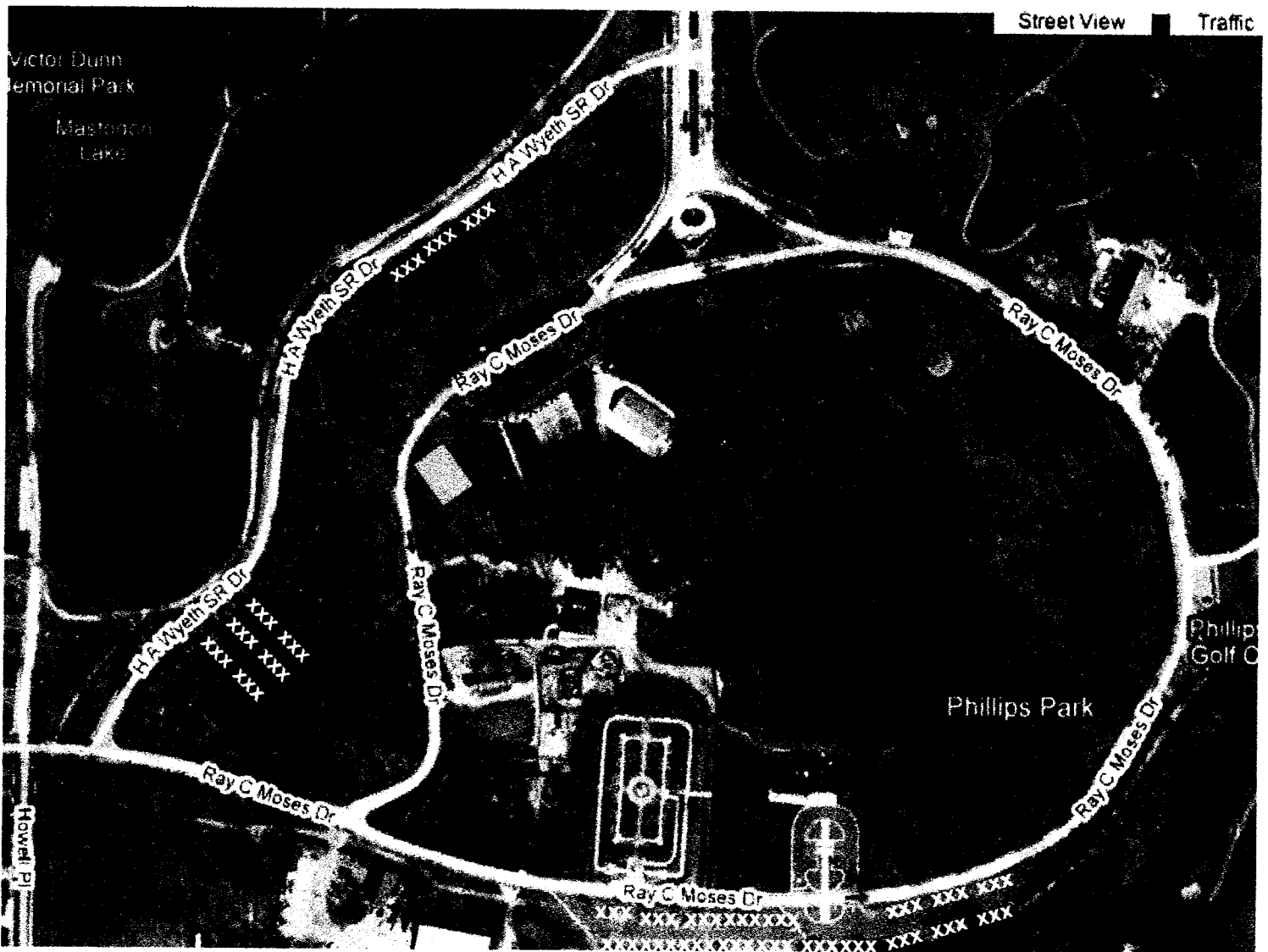



event plot – Phillips Park

Now in its 17th year, Motorcycle Sunday has enjoyed a great partnership with the City of Aurora. MCS works closely with City Parks director Dan Anderson and his staff at Phillips Park to ensure a great event for everyone.

Motorcycle Sunday has worked to gain the respect of the motorcycling community and of the Phillips Park neighbors. In the fourteen years of MCS (including six years at McCarty Park, and nine years at Phillips Park) there have been no problems with parking, crowd control, restroom facilities, or with music from the stage.

The music stage is angled away from the nearest residents so as to reduce unwanted volume. The acoustic, blues, and rock bands play music with lyrics that are family-friendly. The stage also facilitates the bike blessing, greetings from dignitaries, and the people's choice bike contest awards. MCS works with the Aurora Fire Marshall and provides an emergency plan, with certified crowd managers.



- | | | | |
|---|---|---|--------------------|
|  | stage |  | public car parking |
| xxx | portable toilets – nine units total, two handicap | xxx | motorcycle parking |
| xxx | restrooms at the visitor's center | xxx | vendors |

submitted by: Randy Schoof pastor, Warehouse Church & director, Motorcycle Sunday

630-859-0600 office 630-999-0706 mobile randyschoof@warehousechurch.org



emergency plan for Motorcycle Sunday

May 7, 9:30am – 4pm

Phillips Park, Aurora IL



crowd control manager Francis Laity 630-561-6704 mobile
event director Randy Schoof 630-999-0706 mobile

1. If police needed - call 911
2. If ambulance is needed - call 911
3. If fire - call 911 If fire is in in pavilion area, direct people to walk to parking area on Wyeth Dr.
4. Emergency vehicles can access the event area from Smith Blvd. or Ray Moses Dr.
4. If dangerous weather, direct people to gather in the pavilion.
5. Public address announcements will be made by the event director or the crowd control manager, from the stage sound system