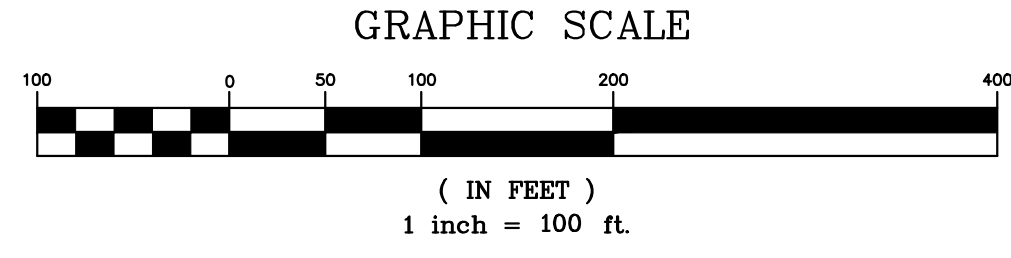
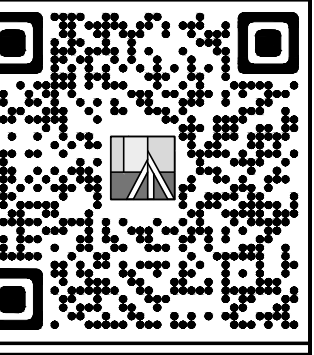


PRELIMINARY PLAT OF SUBDIVISION BUTTERFIELD PHASE II UNIT 5B

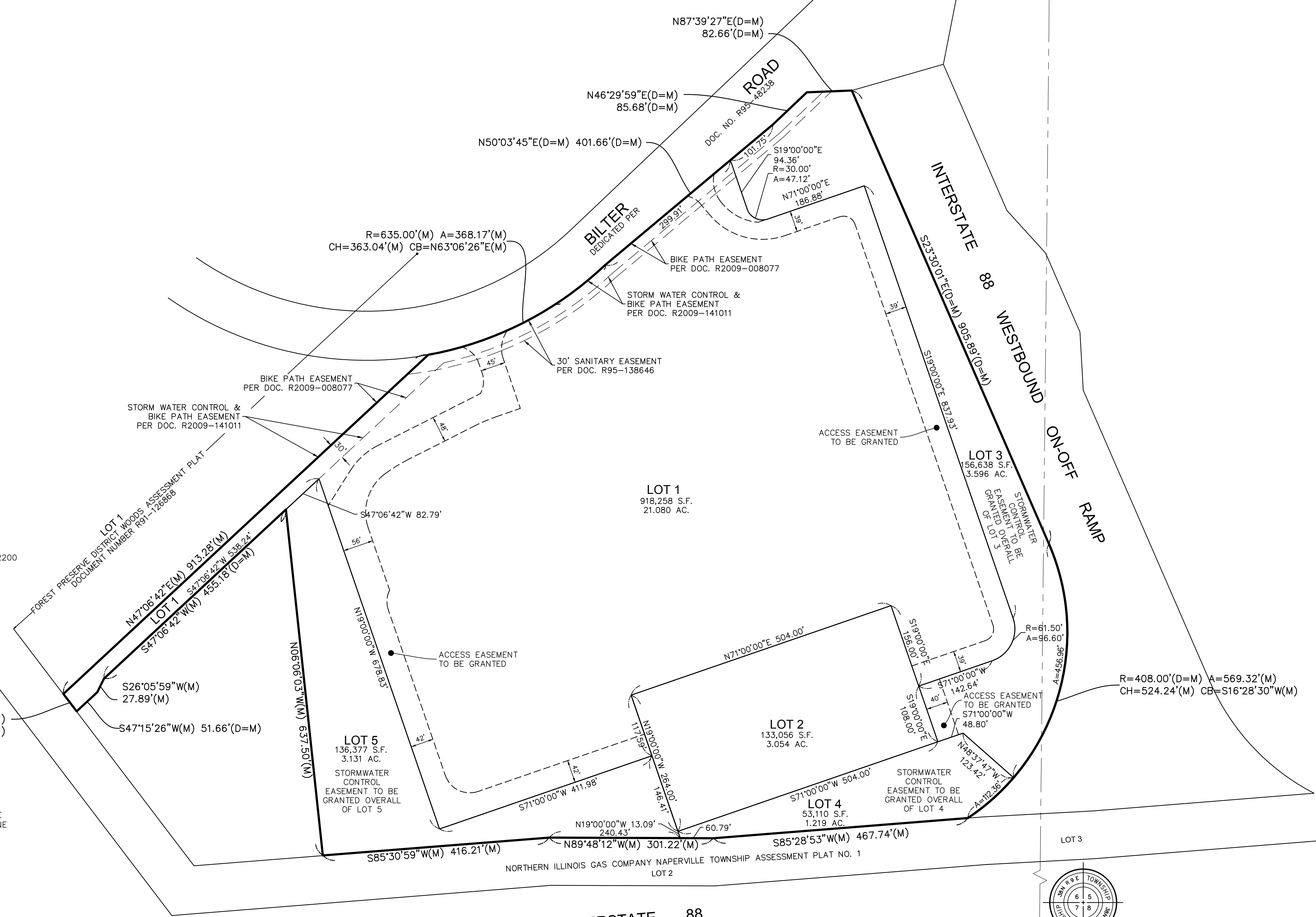
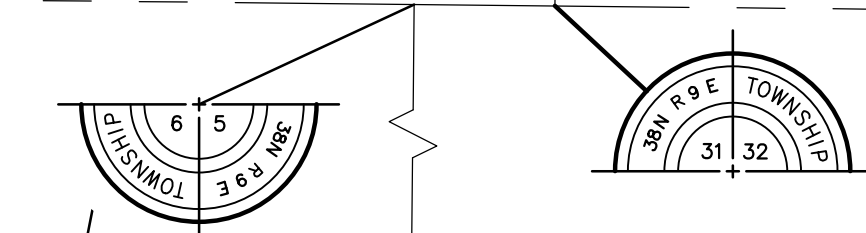
PART OF THE WEST HALF OF SECTION 5 AND THE EAST HALF OF SECTION 6, TOWNSHIP 38 NORTH, RANGE 9 EAST OF THE THIRD PRINCIPAL MERIDIAN, IN DU PAGE COUNTY, ILLINOIS.

CITY RESOLUTION _____

PASSED ON _____



GRID NORTH



OWNER:
CYRUSONE LLC
2850 N. HARWOOD STREET, SUITE 2200
DALLAS TX 75201

PETITIONER:
ROSANOVA & WHITAKER, LTD.
127 AURORA AVE
NAPERVILLE, ILLINOIS 60540

- LINE LEGEND**
- SUBDIVISION BOUNDARY LINE
 - ADJACENT LAND PARCEL LINE
 - LOT LINE
 - - - EASEMENT LINE
 - - - CENTERLINE
 - - - BUILDING SETBACK LINE
 - - - SECTION LINE

- LEGEND**
- IRON PIPE
 - CONCRETE MONUMENT TO BE SET

- ABBREVIATIONS**
- O.D.I.P. = OUTSIDE DIAMETER IRON PIPE
 - N = NORTH
 - S = SOUTH
 - E = EAST
 - W = WEST
 - (R) = RECORD BEARING OR DISTANCE
 - (M) = MEASURED BEARING OR DISTANCE
 - (C) = CALCULATED BEARING OR DISTANCE
 - (D) = DEED BEARING OR DISTANCE
 - B.S.L. = BUILDING SETBACK LINE
 - U.E. = UTILITY EASEMENT
 - D.E. = DRAINAGE EASEMENT
 - P.U.E. = PUBLIC UTILITY EASEMENT
 - P.O.C. = POINT OF COMMENCEMENT
 - P.O.B. = POINT OF BEGINNING
 - P.U. & D.E. = PUBLIC UTILITY AND DRAINAGE EASEMENT

NO.	DATE	2-27-24	PC N/A	DRAWN BY C/C	CHECKED BY DW	BOOK N/A PG N/A	BY

CLIENT
Kimley»Horn
© 2018 KIMLEY-HORN AND ASSOCIATES, INC.
1001 WAREVILLE ROAD, SUITE 350,
NAPERVILLE, ILLINOIS 60563
PHONE: 630-487-5550
WWW.KIMLEY-HORN.COM

PROJECT
Butterfield Phase II,
Unit 5B - Aurora

COMPASS SURVEYING LTD
ALTA SURVEYS • TOPOGRAPHY • CONSTRUCTION STAKING
2631 GINGER WOODS PARKWAY, STE. 100
AURORA, IL 60502
PHONE: (630) 820-9100 FAX: (630) 820-7030 EMAIL: ADMIN@CLSURVEYING.COM

SCALE: 1" = 100'
1 OF 1
PROJ. NO.: 24.0042

Development Data Table: Preliminary Plat		
Description	Value	Unit
a) Tax/Parcel Identification Number(s) (PINs):	07-06-401-013	
b) Subdivided Area (Gross)	32.08	Acres
	1,397,427	Square Feet
c) Proposed New Right-of-way	0.000	Acres
	-	Square Feet
	0	Linear Feet of Centerline
d) Proposed New Easements	10,718	Acres
	466,895	Square Feet