

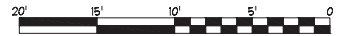
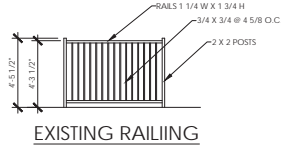
LIGHT SCHEDULE

- LARGE PENDANT
- SMALL PENDANT
- WALL MOUNT
- CAN LIGHT
- SPECIALTY LIGHT
- TRACK LIGHT
- EXISTING LIGHTS
- DIMMERS TO BE ADDED
- (X) = UNABLE TO LOCATE SWITCH

PATIO NO USE GO EXISTING PATIO DOES NOT HAVE DIRECT ACCESS FROM CAFE.

LOCATION OF SWITCHES:
(BOXES ARE LISTED LEFT TO RIGHT, TOP TO BOTTOM)

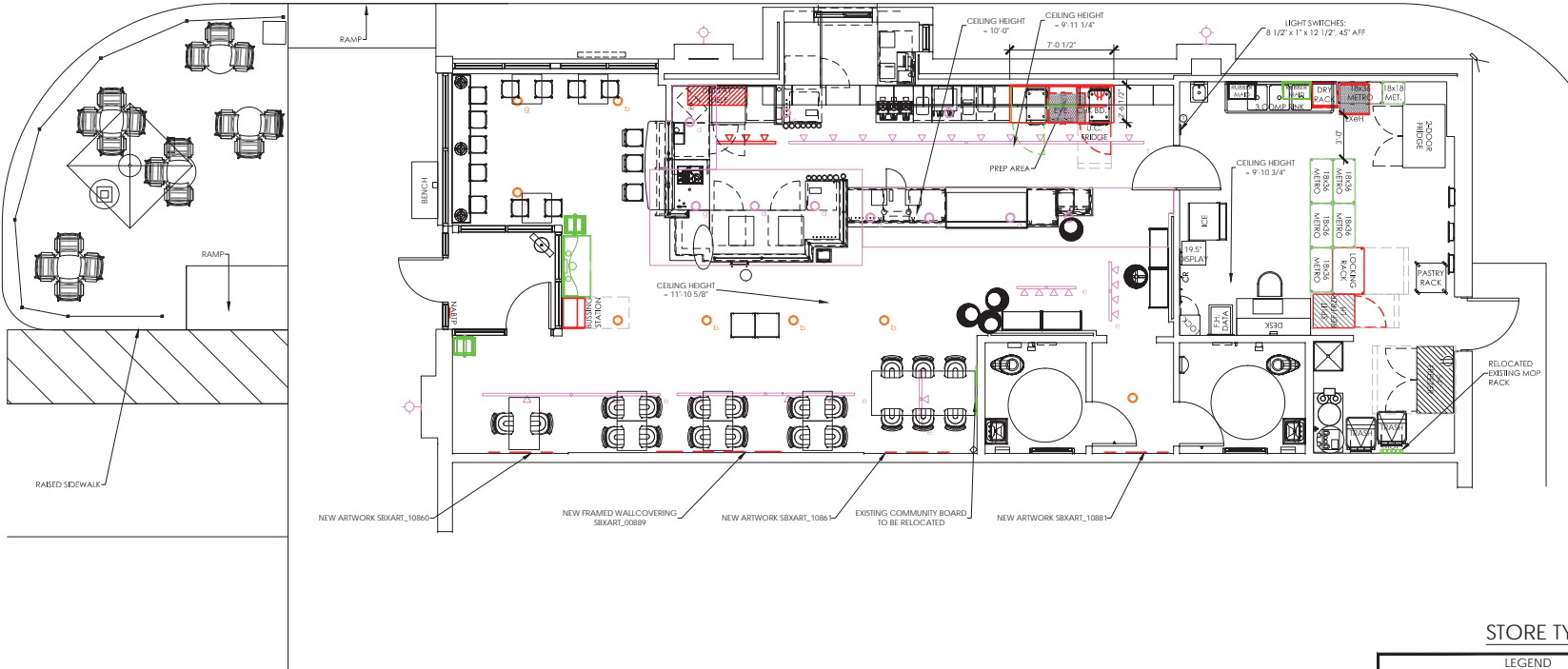
SWITCH	BOX	DIMMER	LABEL
W	1	NO	WORK ROOM SEATING
U	1	NO	KITCHEN/DI
V	2	NO	SEATING
W	2	NO	TRACK/SEATING
T	2	NO	TRACK/KITCHEN
Y	2	NO	NO CHANGELERS/PENDANTS



STARBUCKS EVENINGS
STORE #10825
2948 KIRK ROAD
AURORA, IL 60502



Drawn By
RDR



STORE TYPE: CORE

LEGEND

—	EXISTING ITEMS TO REMAIN
—	NEW ITEMS
- - -	REMOVED ITEMS
- - -	RELOCATED ITEMS
- - -	NEW ARTWORK

01 PROPOSED PLAN

BACK OF HOUSE / STORAGE ITEMS ADDED				ENGINE / BACK LINE ITEMS ADDED				CAFE / SEATING AREA / PATIO ITEMS ADDED			
QTY	DESCRIPTION	FINISH/NOTES	QTY	DESCRIPTION	FINISH/NOTES	QTY	DESCRIPTION	FINISH/NOTES	QTY	DESCRIPTION	FINISH/NOTES
1	TRUE REFRIGERATOR/FREEZER	2HS-LH-STAR ID#10767	2	BACKLINE DISPLAY SHELVES	48"	1	SHEET LAM. FOR END OF CURBIES & END OF EXPOSED UC CABINETS	LAM: WITCHCRAFT	1	BUSSING CART STATION #13111 (FRAME), #13380 (PANELS), #13652 (TOP)	CORIAN: CP 005 LAMINATE: WD0041
1	LOCKING STORAGE RACK 27DX68 25H	ID#10217	1	TRUE 1-DOOR UNDER COUNTER LOCKING REFRIGERATOR, 27 5/8"W	ID#14064	1	BACK BAR TILE (FOR REFERENCE ONLY)	ID# 11330 PER SBUX	1	FINISHED END LEFT: NO DRIP TROUGH: YES	ID#14913
2	WALL MOUNTED DRYING RACKS WMBS-21	ID#13578	1	CHALK BOARD	ID#12838 ID#12839 MOUNT	1	GALLON PAINT FOR BACK BAR	P544-ES	1	"NO ALCOHOL BEYOND THIS POINT" SIGN	ID#14913
1	SANITIZER - HOBART LX6H	ID#13697	1	L.F. OF NEW TRACK FOR LIGHTING TRACK LIGHTS	MATCH EXISTING	10	4 SF OF FRP	BEHIND UC FRIDGE			
			1	24" WARE DRAWER W/LEGS @BACK BAR (CAB. TO BE LAMINATED ON BOTH SIDES)	CABINET ID#13407 LAM: WITCHCRAFT						
			3	COUNTER SUPPORT @ REMOVED UNDER COUNTER LOCATION	ID#11142						

Project Number
DAV15002.0

Store Number

10825
2 of 3