

# ELEVATIONS

Copyright © 2022 KLUBER, INC.

## KEYNOTES

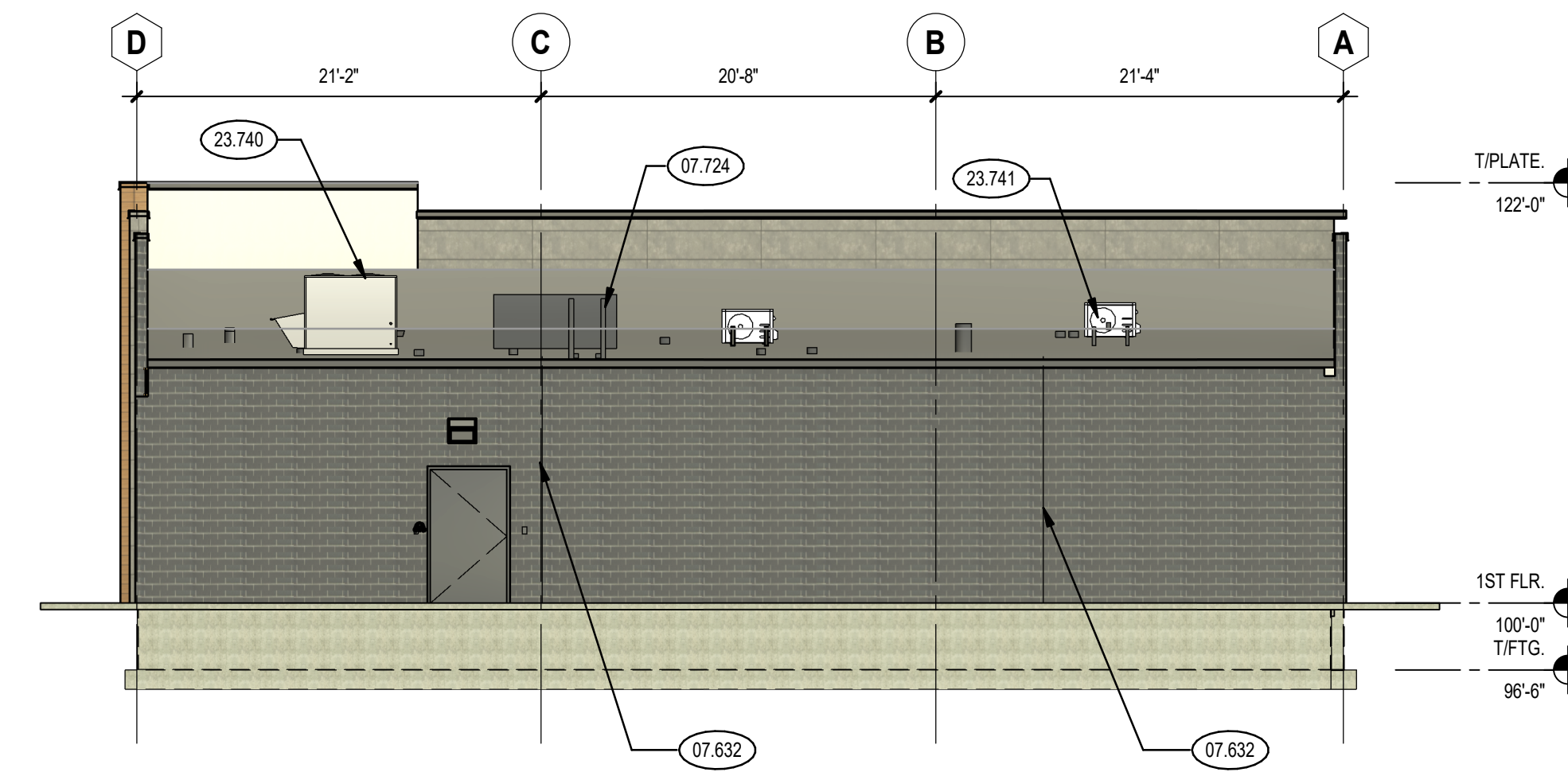
KEYNOTES ARE TYPICALLY NOT DUPLICATED WITHIN A GIVEN DETAIL. AN UN-KEYNOTED ITEM IN A DETAIL IS THE SAME AS A KEYNOTED ITEM HAVING THE SAME APPEARANCE WITHIN THE SAME DETAIL.

- 06.470 ARCHITECTURAL WOOD CASEWORK: 36" WIDE X 34" HIGH ADA COUNTER; CASEWORK PROVIDED BY OWNERS SUPPLIER; GC INSTALLED
- 07.632 METAL DOWNSPOUT: CONNECT AND SEAL TO SUBDRAINAGE PIPE HUB; MATERIAL, THICKNESS AND FINISH AS SPECIFIED; REFER TO CIVIL DRAWINGS
- 07.724 ROOF ACCESSORY: LADDER SECUREMENT DEVICE; ROOF-MOUNTED; WITH GUTTER EDGE MOUNTING PLATE; LADDERLATCH: www.ladderlatch.com
- 08.719 DOOR HARDWARE ACCESSORY: KNOX BOX; RECESSED MOUNTED; PROVIDE TYPE SPECIFIED AND LOCATE AS REQUIRED BY AUTHORITY HAVING JURISDICTION; MOUNT AT 4'-6" ABOVE ADJACENT WALKING SURFACE; COORDINATE RECESSED MOUNTING WITH EXTERIOR WALL CONSTRUCTION
- 10.140 EXTERIOR SIGNAGE: SEPARATE SIGN PERMIT TO BE SUBMITTED BY FUTURE TENANT
- 23.740 MECHANICAL ROOFTOP UNIT: INSTALL ROOF CURB AND FLASHING TO MANUFACTURERS STANDARDS; REFER TO MECHANICAL DRAWINGS
- 23.741 MECHANICAL ROOFTOP UNIT: HEAT PUMP; REFER TO MECHANICAL DRAWINGS

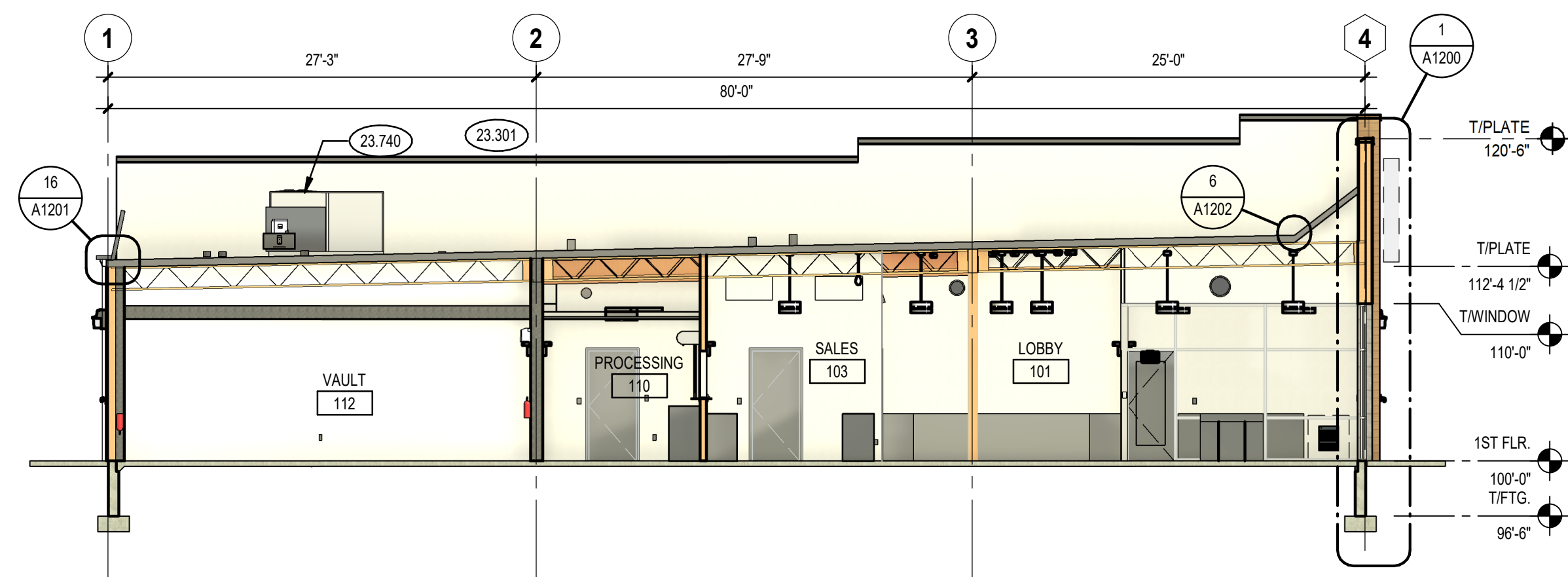
| Elevation Data Table: Elevations                 |           |             |
|--|-----------|-------------|
| Description                                      | Value     | Unit        |
| a) Building Height in feet (typical)             | 22.00     | feet        |
| b) Total Building Square Footage (typical)       | 13,563.00 | Square Feet |
| c) First Floor Building Square Footage (typical) | -         | Square Feet |
| d) Number of building stories (typical)          | 1.00      | Square Feet |

e) Exterior Material List (including colors) for all buildings and accessory structures:  
The building will be clad in three different colors/textures of a Nichiha fiber cement architectural panel. Panels include Corbosa Moon dust, Vintagewood Cedar, and Modernbrick Midnight. All metal storefront will be dark anodized in color and finish.

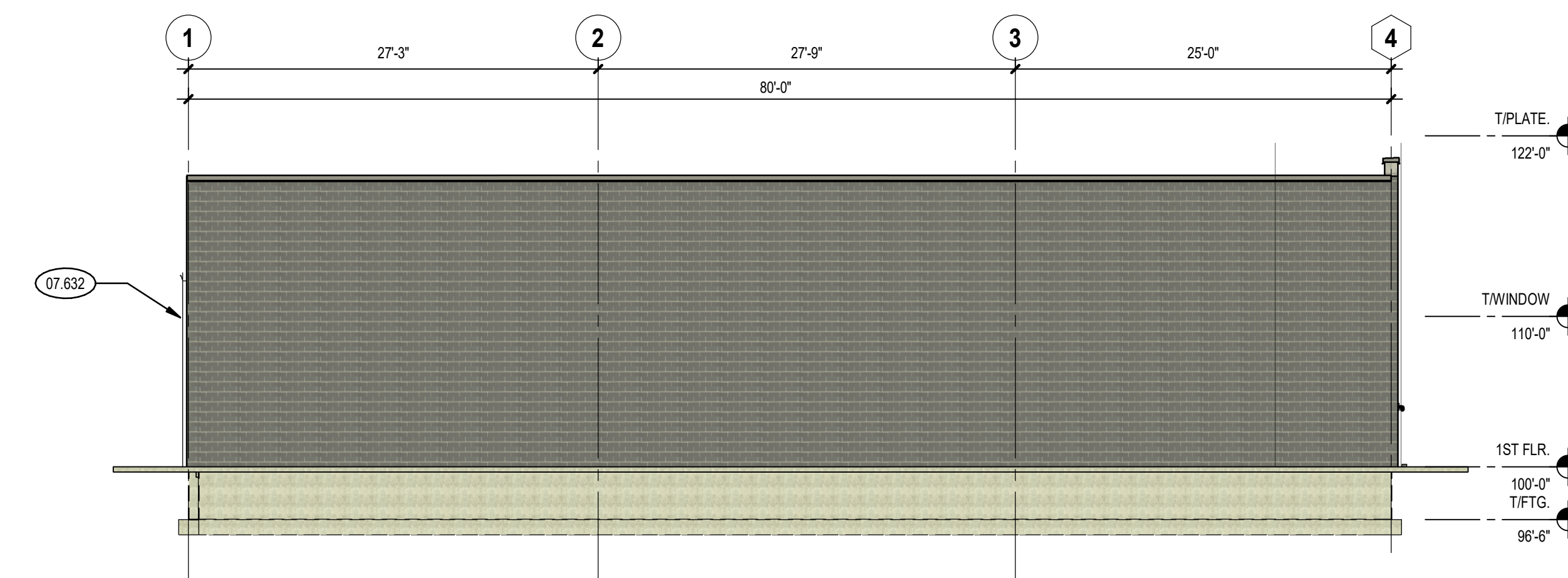
| Elevation Data Table: Wall Signage |   |         |             |
|------------------------------------|---|---------|-------------|
| Wall Sign #                        | Description   | Value   | Unit        |
| 1                                  | i) Width of Façade - on which Sign is Located                   | 15.00   | Feet        |
|                                    | ii) Height of Façade - on which Sign is Located                 | 22.00   | Feet        |
|                                    | iii) Square Footage of Façade - on which Sign is Located        | 341.00  | Square Feet |
|                                    | iv) Width of Sign Face  | TBD     | Feet        |
|                                    | v) Height of Sign Face  | TBD     | Feet        |
|                                    | vi) Square Footage of Sign Face                                 | #VALUE1 | Square Feet |
|                                    | vii) Percent of Sign Coverage - Façade on which Sign is Located | #VALUE1 | Percent     |



**WEST ELEVATION**  
SCALE: 1/8" = 1'-0" 4



**BUILDING SECTION LOOKING NORTH**  
SCALE: 1/8" = 1'-0" 5



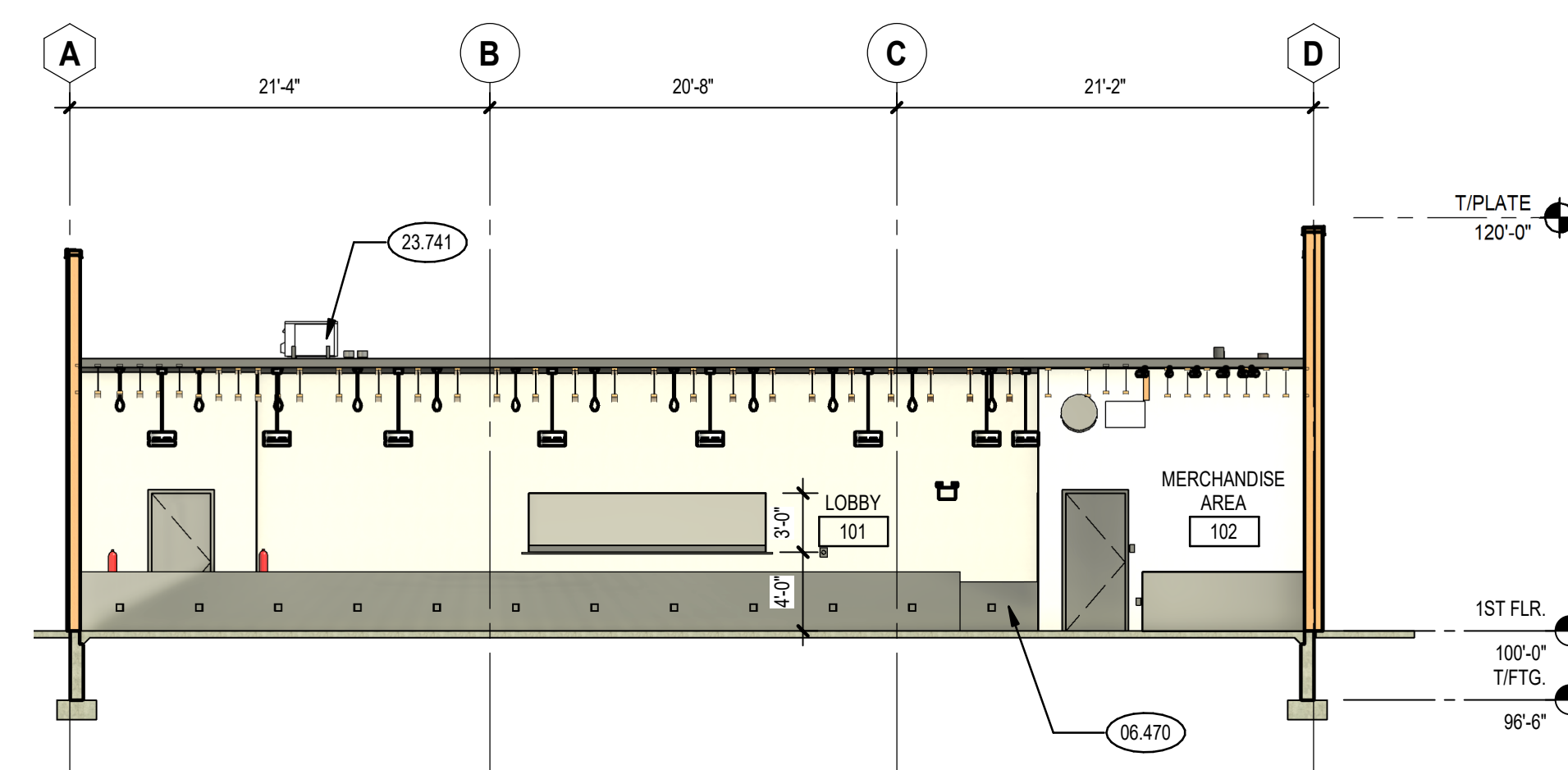
**SOUTH ELEVATION**  
SCALE: 1/8" = 1'-0" 3

## DOOR SCHEDULE ABBREVIATIONS

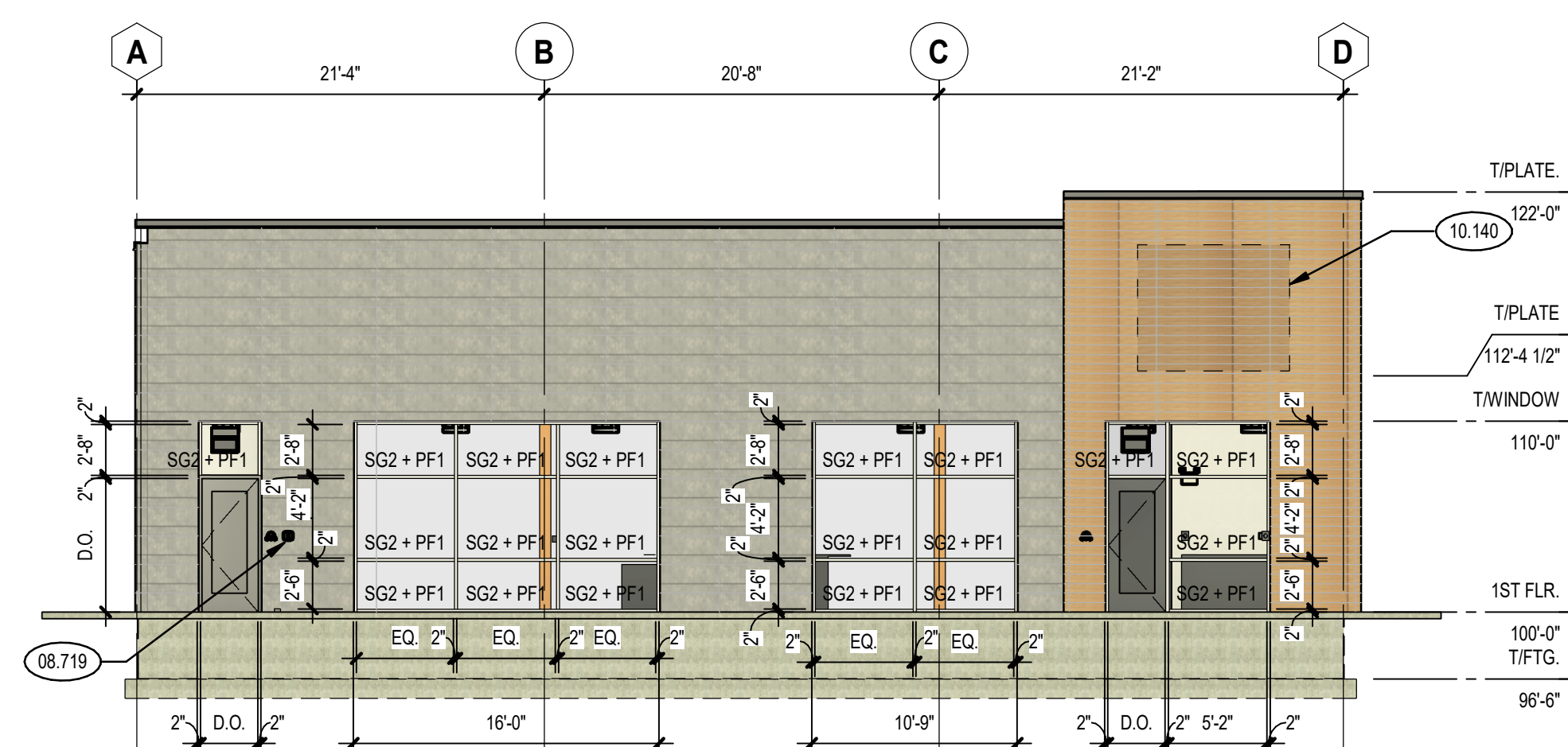
| DOOR / FRAME MATERIAL       | DOOR / FRAME FINISHES   | SPECIAL DOOR TYPES         |
|-----------------------------|-------------------------|----------------------------|
| AL ALUMINUM                 | P4 PAINTED - SEMI-GLOSS | AC ACCESS PANEL            |
| STL STEEL                   | P5 FACTORY PREFINISHED  | CS COILING COUNTER SHUTTER |
| WD WOOD                     |                         |                            |
| GLASS TYPES                 |                         |                            |
| FG1 CLEAR SAFETY GLASS      |                         |                            |
| SG2 CLEAR INSULATING GLASS  |                         |                            |
| SG3 SPANDREL INSUL. GLASS   |                         |                            |
| PF1 GLAZING FILM (BY OWNER) |                         |                            |

## EXTERIOR PANEL LEGEND

|  |                                    |
|--|------------------------------------|
|  | NICHA PANEL - CORBOSA MOONDUST     |
|  | NICHA PANEL - VINTAGEWOOD CEDAR    |
|  | NICHA PANEL - MODERNBRICK MIDNIGHT |



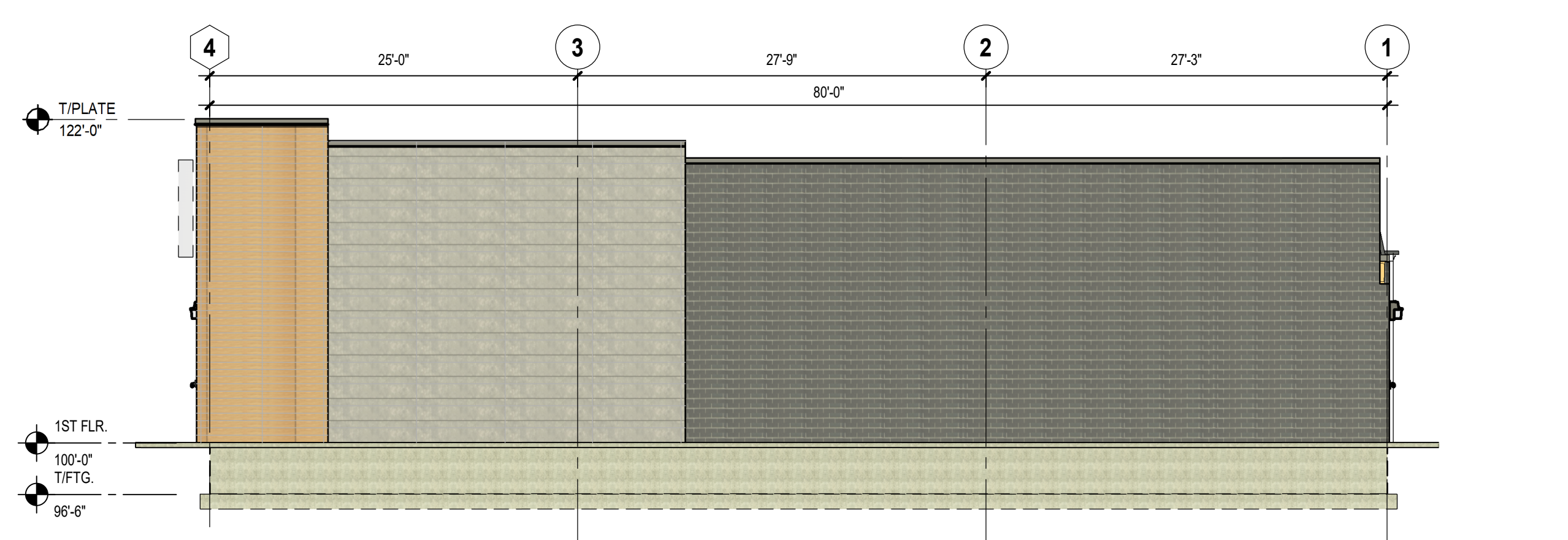
**BUILDING SECTION LOOKING WEST**  
SCALE: 1/8" = 1'-0" 6



**EAST ELEVATION**  
SCALE: 1/8" = 1'-0" 2

## GENERAL NOTES

1. REFER TO DRAWINGS G100 FOR PROJECT GENERAL NOTES.
2. REFER TO ROOF PLAN DRAWING A320 FOR ELEVATIONS OF OVERFLOW SCUPPERS.
3. COORDINATE LOCATIONS OF WALL-MOUNTED MECHANICAL, PLUMBING AND ELECTRICAL ITEMS TO ENSURE NO OVERLAP.



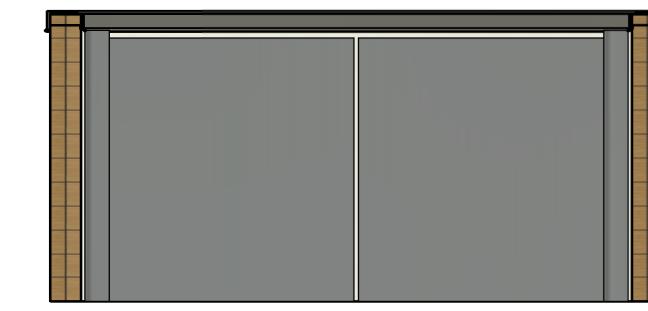
**NORTH ELEVATION**  
SCALE: 1/8" = 1'-0" 1



**EAST & WEST ELEV.**  
SCALE: 1/4" = 1'-0" 9



**NORTH ELEVATION**  
SCALE: 1/4" = 1'-0" 8



**TRASH ENCLOS. - S. ELEV.**  
SCALE: 1/4" = 1'-0" 7

| ISSUED   | REVISION                    |
|----------|-----------------------------|
| 12/07/22 | 100% CONSTRUCTION DOCUMENTS |
| 07/29/23 | REVISED PERMIT DOCUMENTS    |

|          |             |
|----------|-------------|
| JOB NO.  | 22-466-1433 |
| DRAWN    | PJT         |
| CHECKED  | MLE         |
| APPROVED | JMB         |

SHEET TITLE  
**EXTERIOR ELEVATIONS & BUILDING SECTIONS**

SHEET NUMBER  
**A700**