

FINAL PLAN FOR WEST AURORA HIGH SCHOOL

ZONING DISTRICT P

ZONING DISTRICT R-2

ZONING DISTRICT R-2

ZONING DISTRICT P

ZONING DISTRICT R-2

ZONING DISTRICT R-2

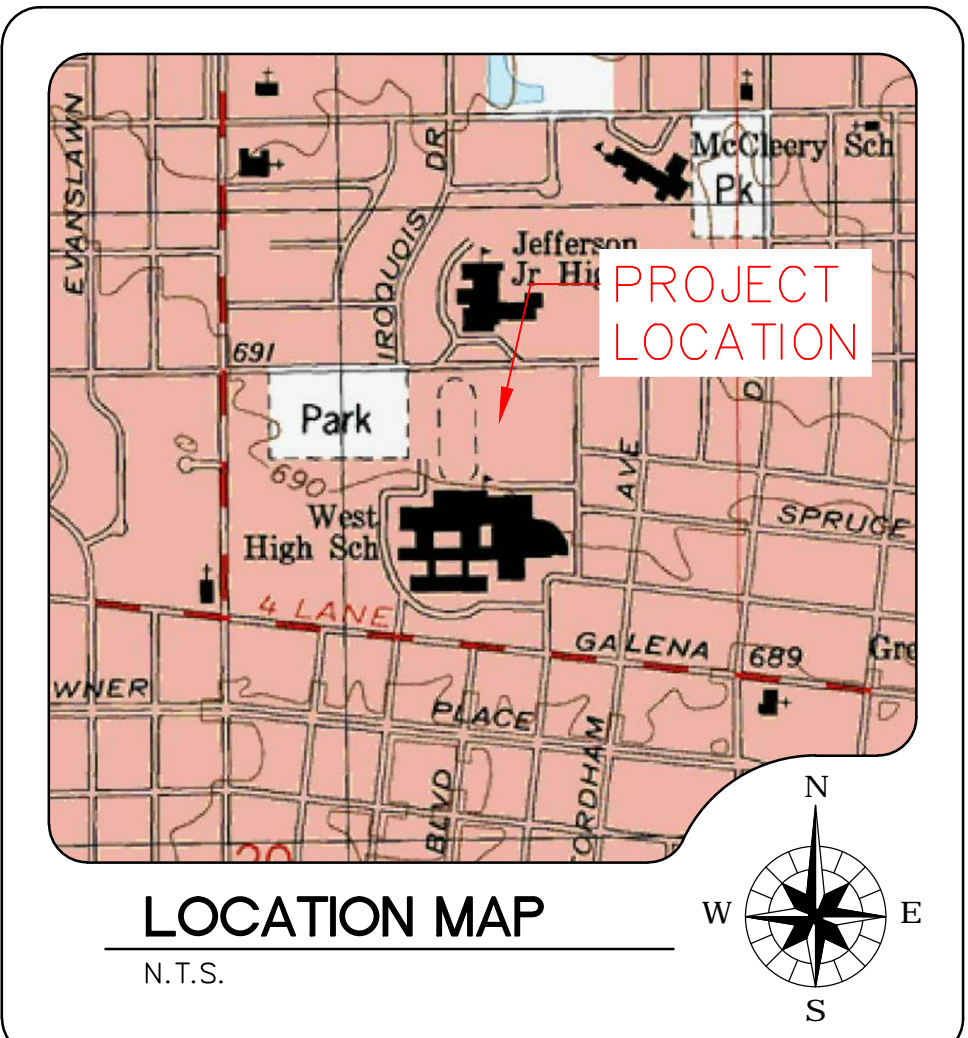
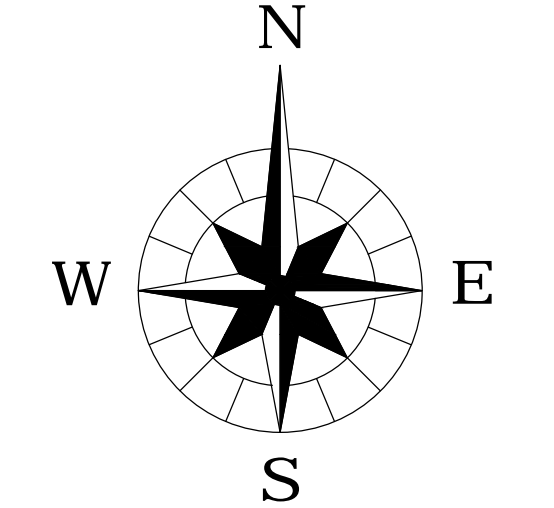
ZONING DISTRICT R-2

ZONING DISTRICT R-2

- LEGEND:**
- UE— UNDERGROUND ELECTRIC
 - W— WATER MAIN
 - SS— STORM SEWER
 - SM— SANITARY MAIN
 - FO— FIBER OPTIC LINE
 - X— FENCE
 - G— GAS LINE
 - ⊙ FIRE HYDRANT
 - ⊗ WATER VALVE
 - ⊙ WATER VALVE VAULT
 - ⊙ STORM MANHOLE
 - ⊙ SANITARY MANHOLE
 - ⊙ POWER POLE
 - ⊙ GROUND LIGHT
 - ⊙ SIGN
 - ▭ EXISTING BUILDING
 - ▭ PROPOSED BUILDING
 - ▭ PROPOSED ASPHALT

WEST AURORA SCHOOL DISTRICT #129
Development Data Table: Preliminary/Final Plan

Description	Value	Unit
*a) Tax/Parcel Identification Number(s) (PINs): **15-20-201-001, 15-20-201-002, 15-20-201-003, 15-20-201-004, 15-20-201-005, 15-20-201-006, 15-20-201-010, 15-20-201-014, 15-20-201-017, 15-20-201-018, 15-20-201-034, 15-20-201-035, 15-20-201-037, 15-20-201-039, 15-20-201-041, 15-20-201-043, 15-20-201-045 & 15-20-229-001, 15-20-229-002, 15-20-229-003, 15-20-229-008, 15-20-229-009, 15-20-229-009 & 15-20-231-001, 15-20-231-002, 15-20-231-003 & 15-20-233-002, 15-20-233-003*		
b) Proposed land use(s): Education		
c) Total Property Size	46.5	Acres
	2,024,351	Square Feet
d) Total Lot Coverage	933,689	Square Feet
(buildings and pavement)	46%	Percent
e) Open space / landscaping	1,090,662	Square Feet
	54%	Percent
f) Land to be dedicated to the School District	0	Acres
g) Land to be dedicated to the Park District	0	Acres
h) Number of parking spaces provided (individually accessible)	843	spaces
i. surface parking lot	843	spaces
perpendicular	468	spaces
parallel	11	spaces
angled	347	spaces
handicapped	17	spaces
ii. enclosed	0	spaces
iii. bike	6	racks
i) Number of buildings	1	
i. Number of stories	2	stories
ii. Building Square Footage (average)	374,916	square feet
iii. Gross Floor Area of commercial use	0	GFA
iv. Building Foundation perimeter (Typical)	4878	Linear Footage



TITLE: WEST AURORA HIGH SCHOOL

CLIENT: WEST AURORA SCHOOL DISTRICT #129
80 S. RIVER STREET
AURORA, IL 60506
630-301-5000

PROJECT NO. 15-0160.0

DATE: 09-04-15

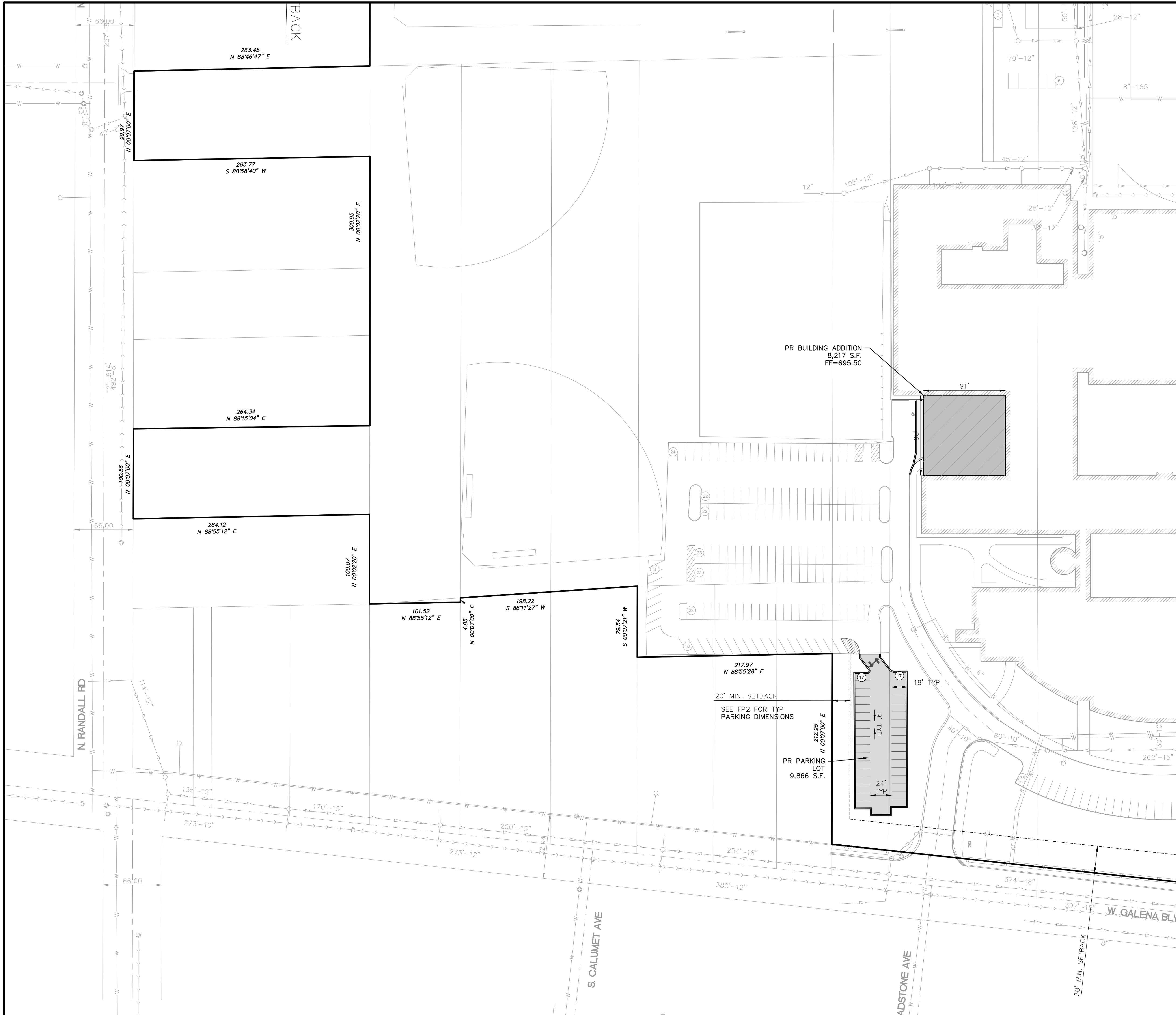
DRAWING NO. FP1

SHEET: 1 OF 5

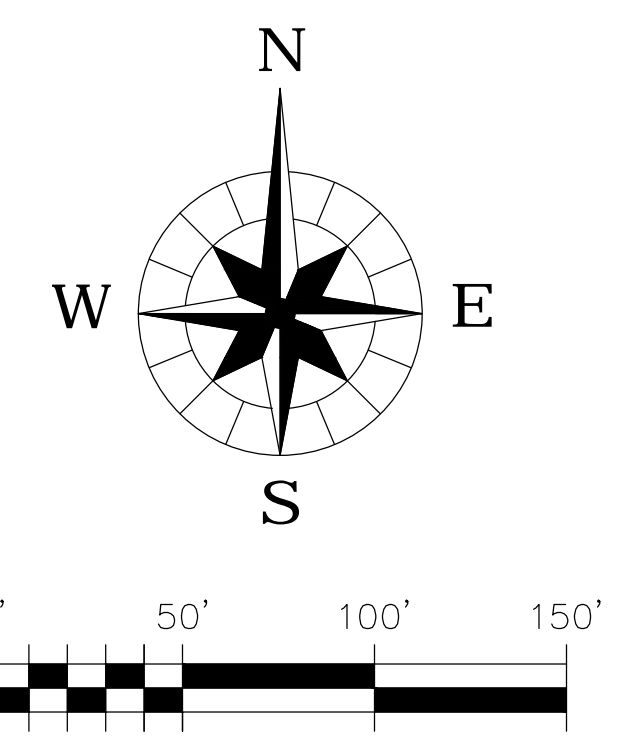
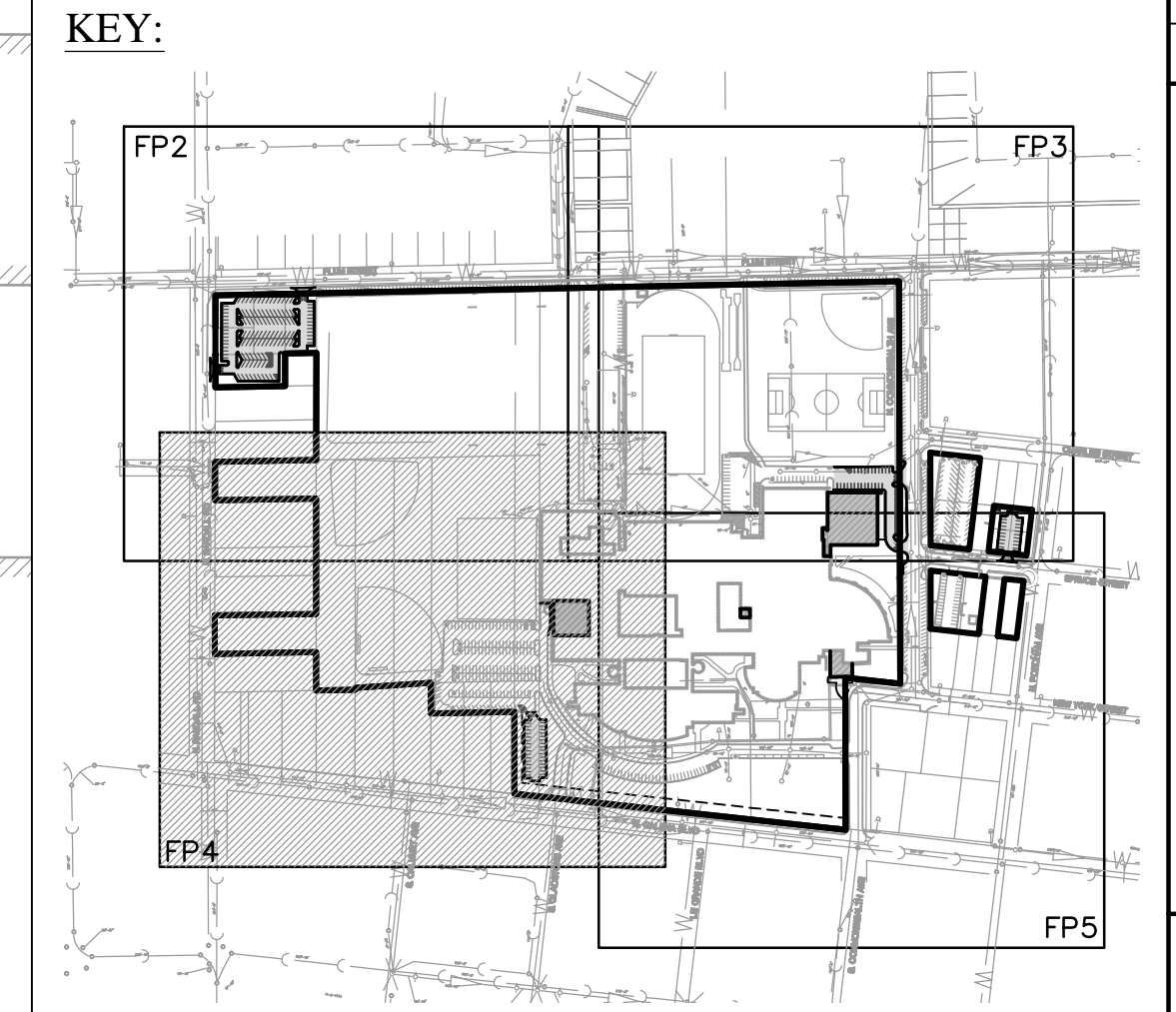
NO. DATE NATURE OF REVISION

PP150160_07.DWG

SCALE: 1" = 100'

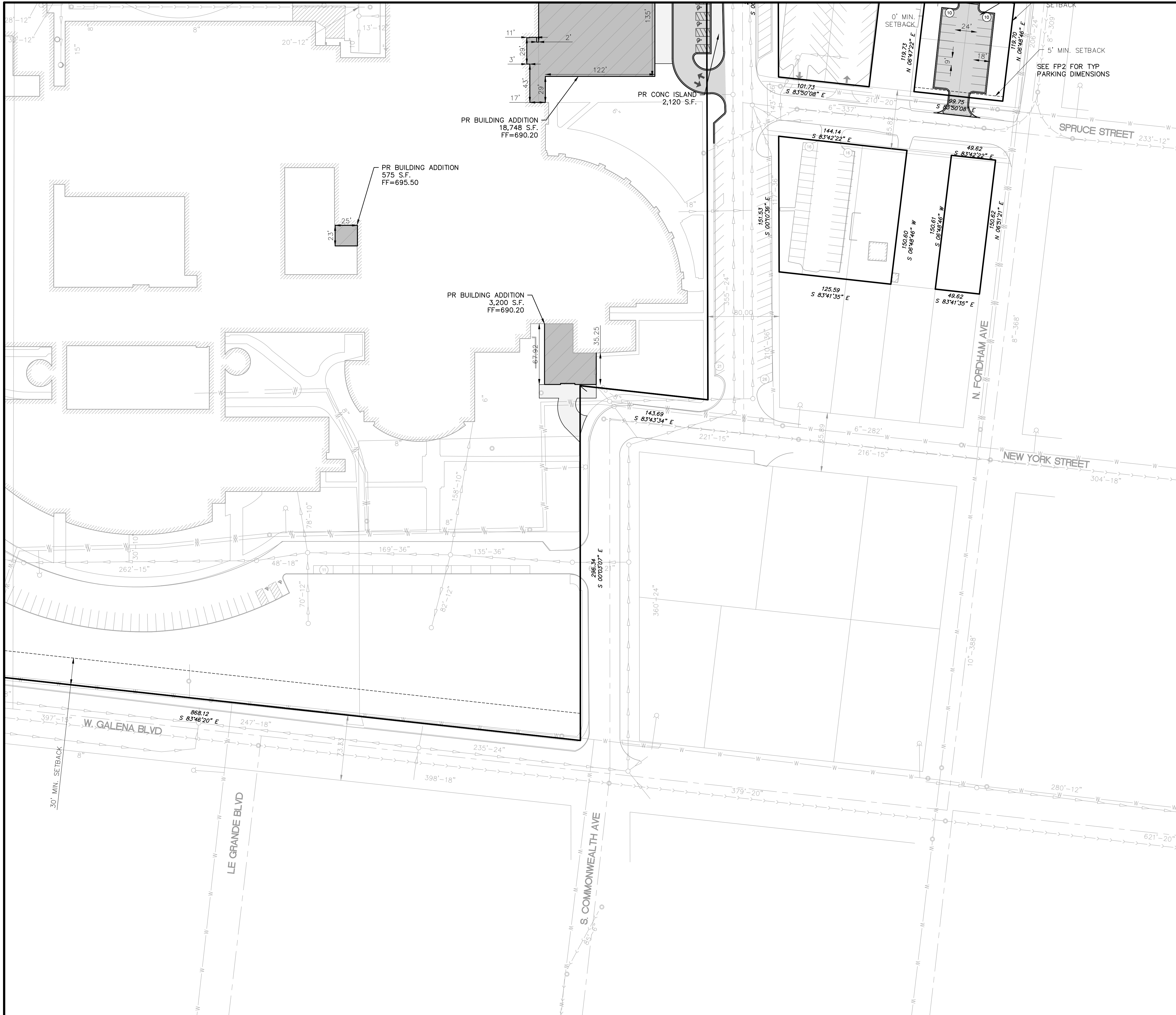


- LEGEND:**
- UE— UNDERGROUND ELECTRIC
 - W— WATER MAIN
 - SS— STORM SEWER
 - SM— SANITARY MAIN
 - FO— FIBER OPTIC LINE
 - X— FENCE
 - G— GAS LINE
 - FIRE HYDRANT
 - ⊗ WATER VALVE
 - WATER VALVE VAULT
 - STORM MANHOLE
 - SANITARY MANHOLE
 - POWER POLE
 - ⊗ GROUND LIGHT
 - SIGN
 - ▨ EXISTING BUILDING
 - ▩ PROPOSED BUILDING
 - PROPOSED ASPHALT



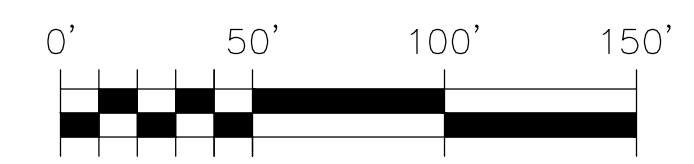
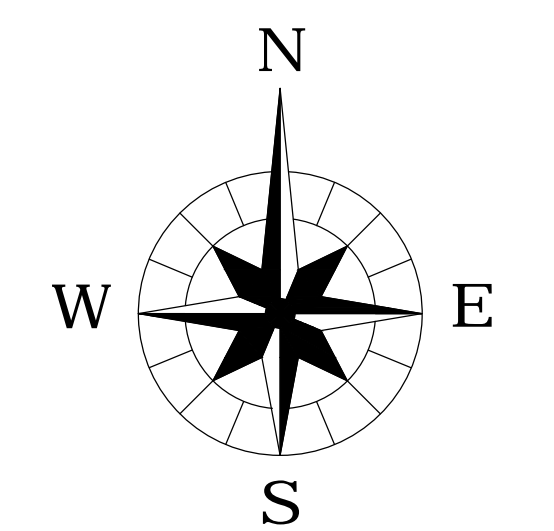
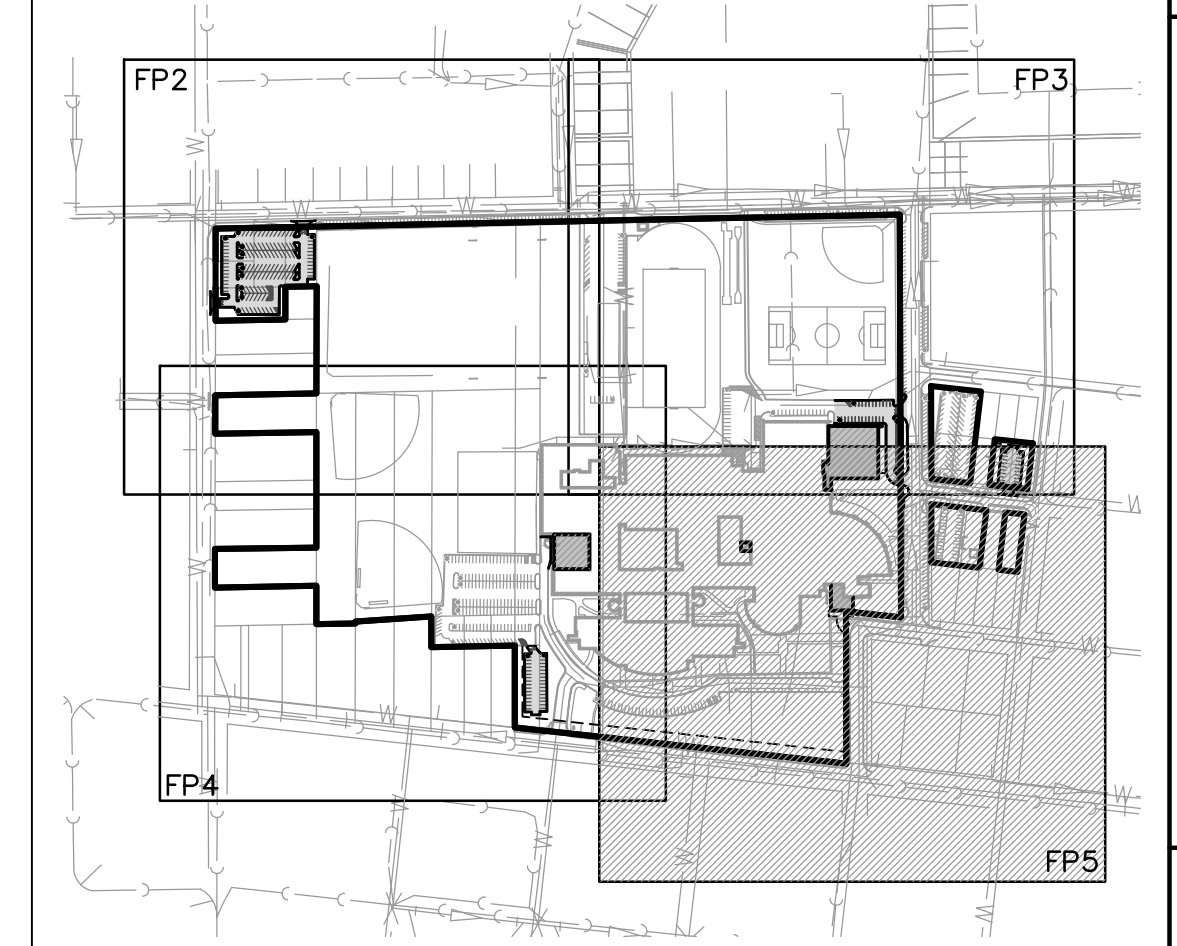
WEST AURORA HIGH SCHOOL TITLE:			
DSGN. JCL	JSE	JCL	JCL
DIVN.	CHKD.	SCALE: 1" = 80'	
NO.		DATE	
NATURE OF REVISION		FF150160_07.DWG	
CLIENT: WEST AURORA SCHOOL DISTRICT #129 80 S. RIVER STREET AURORA, IL 60506 630-301-5000			
WILLS BURKE KELSEY ASSOCIATES LTD. 8 East Galena Blvd., Suite 402 Aurora, Illinois 60506 (630) 701-2245			
PROJECT NO. 15-0160 0			
DATE: 09-04-15			
DRAWING NO. FP4			
SHEET:			
4 OF 5			

W:\Projects\2015\150160\WillsBurkeKelsey\Drawings\150160_07.dwg, P14, 11/20/15 1:08:55 PM
 DRAWN BY: J. KAMLER



- LEGEND:**
- UE— UNDERGROUND ELECTRIC
 - W— WATER MAIN
 - SS— STORM SEWER
 - SM— SANITARY MAIN
 - FO— FIBER OPTIC LINE
 - X— FENCE
 - G— GAS LINE
 - FIRE HYDRANT
 - ⊗ WATER VALVE
 - WATER VALVE VAULT
 - STORM MANHOLE
 - SANITARY MANHOLE
 - POWER POLE
 - ⊗ GROUND LIGHT
 - SIGN
 - ▨ EXISTING BUILDING
 - ▩ PROPOSED BUILDING
 - PROPOSED ASPHALT

KEY:



WEST AURORA HIGH SCHOOL TITLE:	
DSGN. JCL DIVN. JSE	CHKD. JCL SCALE: 1" = 80'
NO. DATE NATURE OF REVISION	
CLIENT: WEST AURORA SCHOOL DISTRICT #129 80 S. RIVER STREET AURORA, IL 60506 630-301-5000	
WILLS BURKE KELSEY ASSOCIATES LTD. 8 East Galena Blvd., Suite 402 Aurora, Illinois 60506 (630) 701-2245	
PROJECT NO. 15-0160.0 DATE: 09-04-15 DRAWING NO. FP5 SHEET:	
5 OF 5	

W:\projects\2015\150160\150160.dwg (150160.dwg) - High School Design - 09/04/15 10:10 AM
 PLOTTED 11/20/15 10:10 AM