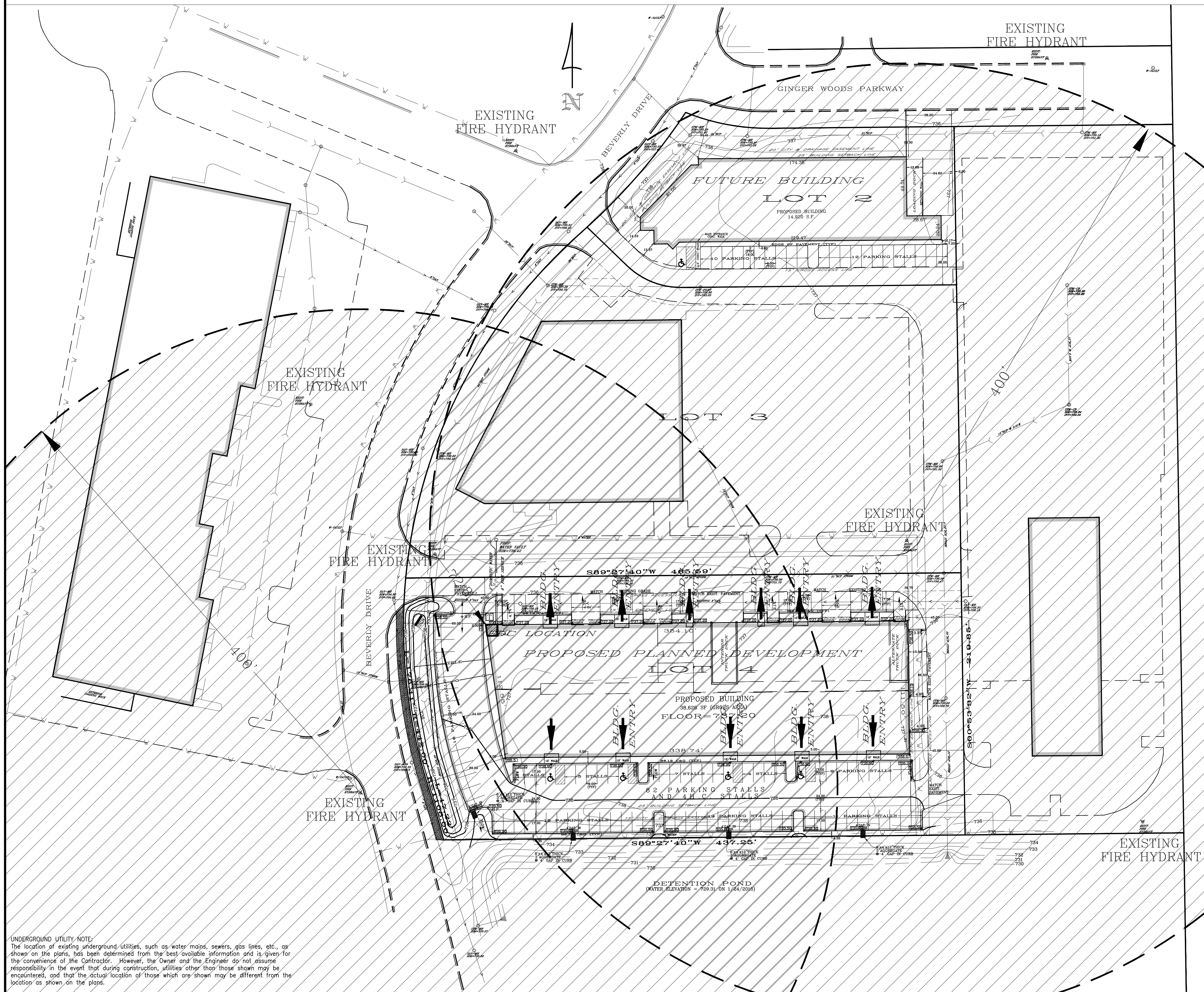


FIRE ACCESS PLAN ON CONDO LOT 4 OF LOT 5 OF AURORA CORPORATE CENTER



Fire Access Plan Data Table			
Description	Value	Unit	
a) Building Height		feet	
b) Square footage of each building	38,759	square feet	
c) Building fire suppression information including any proposed use of sprinkler systems, fire alarm systems, whether fire extinguishers are needed:			
FIRE SUPPRESSION PROVIDED PER NFPA 13			
FIRE ALARM PROVIDED PER NFPA 72			
FIRE EXTINGUISHERS PER IFC 2012			
d) General description of business to be conducted within each building including: will there be rack storage in the building, will there be storage of combustible materials over twelve feet in height, clearance of sprinkler heads and stored materials (18 inches minimum):			
OFFICE, WAREHOUSE AND INDUSTRIAL USERS			
FIRE SUPPRESSION PROVIDED PER NFPA 13			

UNDERGROUND UTILITY NOTE:
The location of existing underground utilities, such as water mains, sewers, gas lines, etc., as shown on the plans, has been determined from the best available information and is given for the convenience of the Contractor. However, the Owner and the Engineer do not assume responsibility in the event that during construction, utilities other than those shown may be encountered, and that the actual location of those which are shown may be different from the location as shown on the plans.