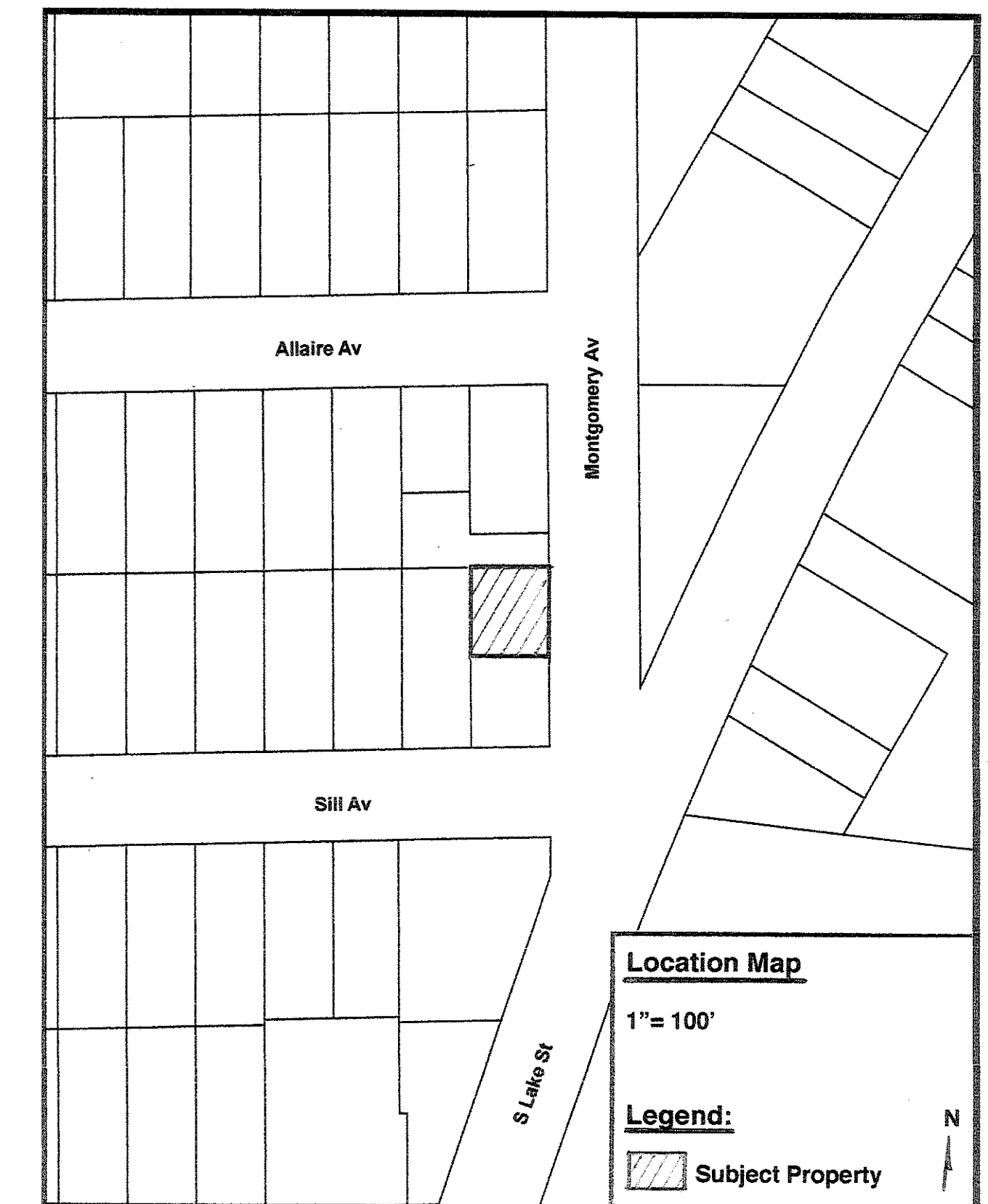
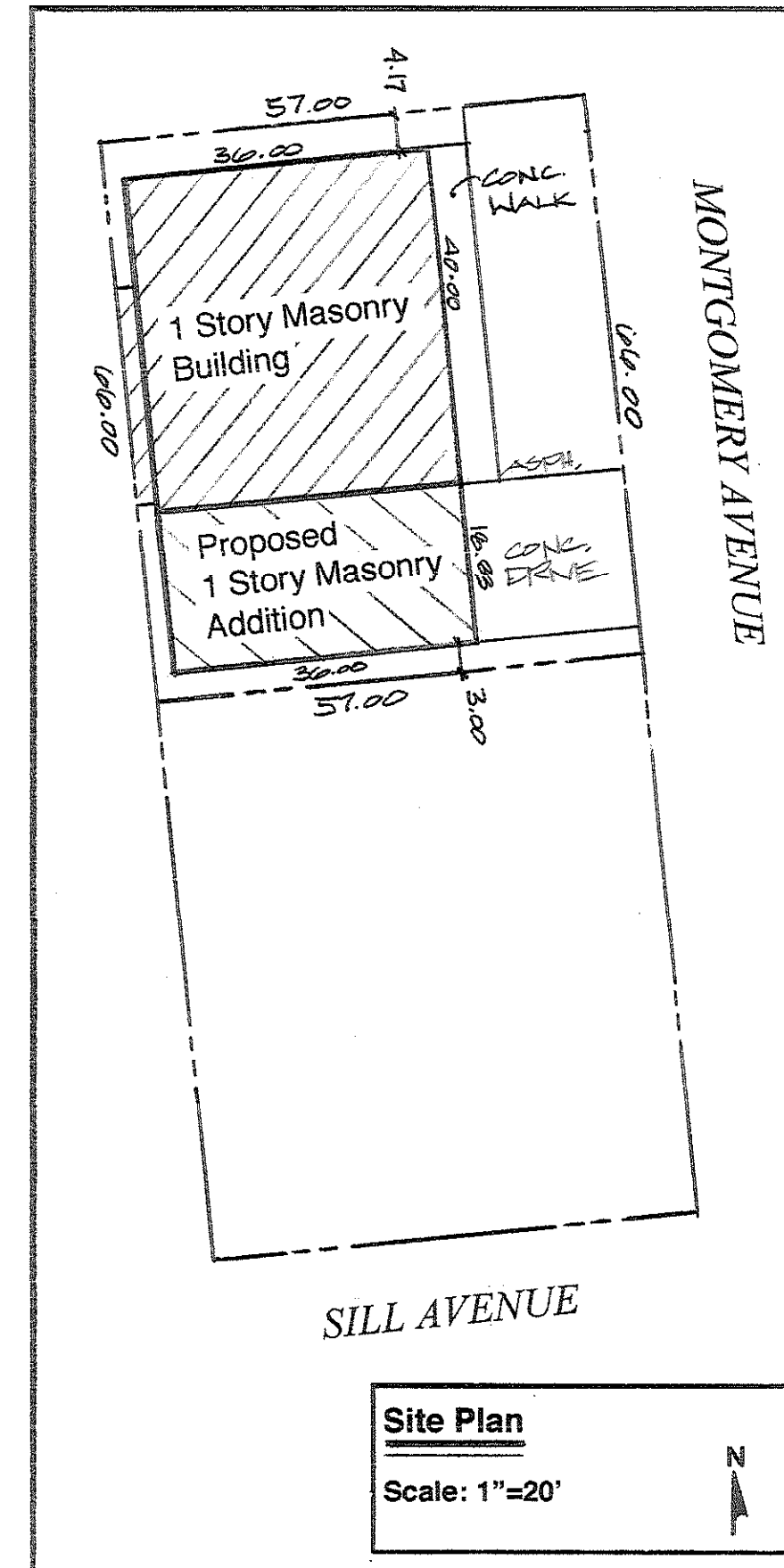


FINAL PLAN

Lot 18 South End Addition



Final Plan: Lot 18, South End Addition
Development Data Table

Description	Value	Unit
a) Tax/parcel Identification Number (PIN)	15-29-427-019	
b) Total Property Size	0.09	Acres
	3762	Square Feet
c) Total Lot Coverage	3367	Square Feet
	89.5	Percent
i. Buildings and pavement	3367	Square Feet
	89.5	Percent
ii. Open space/landscaping	391	Square Feet
	10.5	Percent
d) Proposed land use:	Garage addition to shop	
e) Number of parking spaces provided	5	
i. Perpendicular	5	spaces
ii. Parallel	0	spaces
iii. Angled	0	spaces
iv. Handicapped	0	spaces
v. Enclosed	0	spaces
vi. Bike	0	racks
f) Number of buildings	1	
i. Number of stories	1	stories
ii. Building Square footage (average)	2118	Square Feet
iii. Gross Floor Area fo commercial use	2118	GFA
g) Total Number of Residential Dwelling Units	0	units
i. Gross Density		du/acre
ii. Net Density		Net Density
h) Number of Single Family Dwelling Units	0	units
i. Gross Density		du/acre
ii. Net Density		Net Density
iii. Unit Square Footage (average)		Square Feet
iv. Bedroom Mix		% 1 bdr % 2 bdr % 3 bdr
i) Number of Single Family Attached Dwelling Units	0	units
i. Gross Density		du/acre
ii. Net Density		Net Density
iii. Unit Square Footage (average)		Square Feet
iv. Bedroom Mix		% 1 bdr % 2 bdr % 3 bdr
j) Number of Multifamily Dwelling Units	0	units
i. Gross Density		du/acre
ii. Net Density		Net Density
iii. Unit Square Footage (average)		Square Feet
iv. Bedroom Mix		% 1 bdr % 2 bdr % 3 bdr

REVISIONS	BY

John Anderson, Owner
(630) 801-1230

GARAGE ADDITION
A Touch of Glass and Mirror
939 Montgomery Ave.
Aurora, IL 60506

FINAL PLAN
Lot 18 South End Addition

Lance A. Weber—Architect
2090 Jericho Road, Aurora IL 60506
630.264.1705

DATE 6.10.15

SCALE

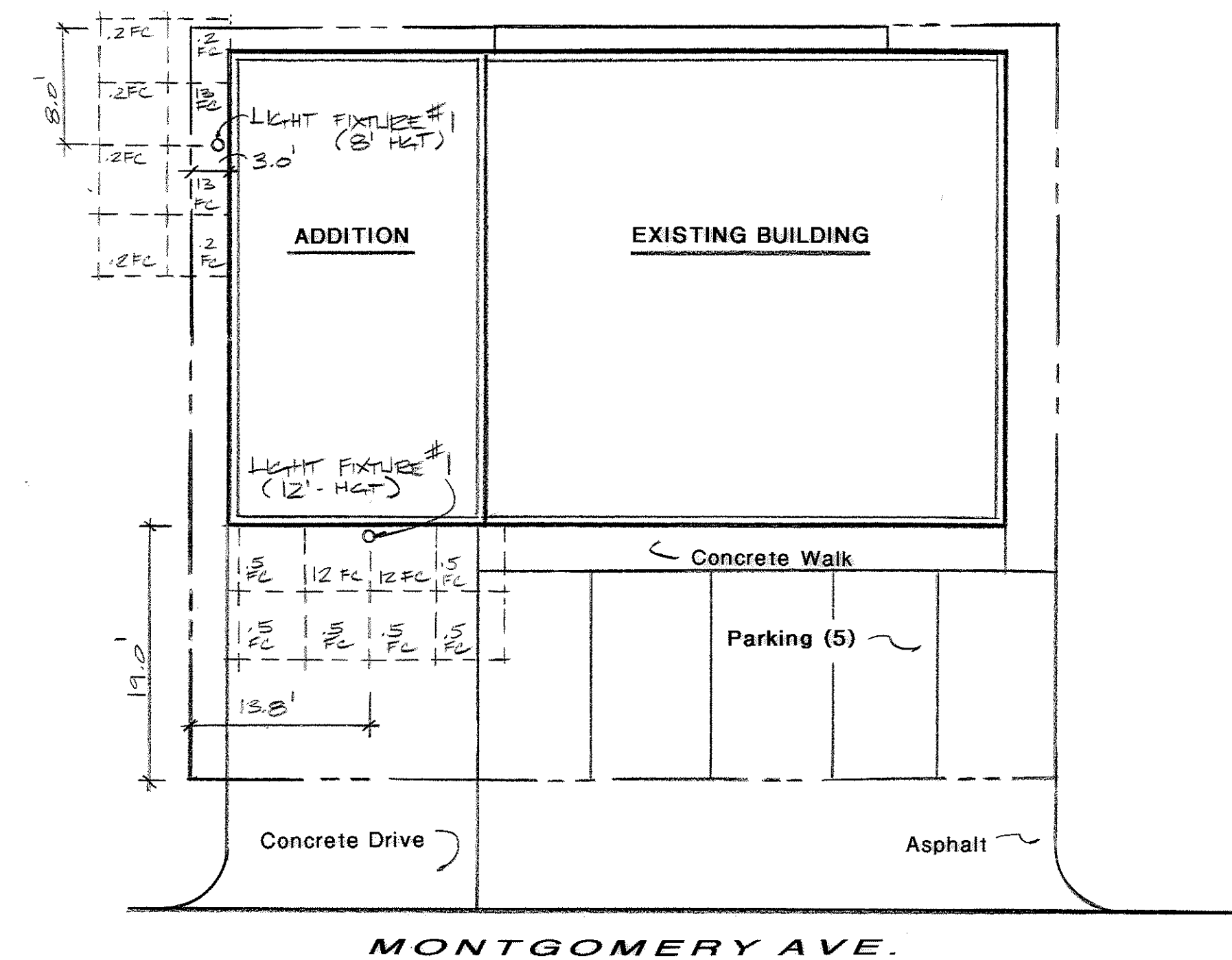
DRAWN LHW

JOB

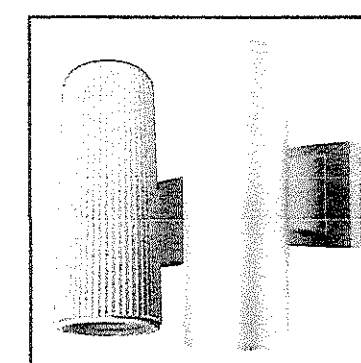
SHEET

OF 1 SHEETS

PHOTOMETRIC LAYOUT



PHOTOMETRIC LAYOUT



4" Direct/Indirect LED Wall Mount Cylinder LD4
Wet Location
120V or 277V

DATE: _____ TYPE: _____
FIRM NAME: _____
PROJECT: _____
LiteForms
For conversion to millimeters, multiply inches by 25.4
Not to Scale

APPLICATIONS:
The LD4 is a 4" direct/indirect wall mount LED cylinder to achieve illumination patterns on vertical walls or columns. The LD4 is suitable for a wide variety of commercial, retail and institutional applications including building exterior, column, and corridor illumination. Suitable applications with ambient temperatures up to 50°C (80°F) during operation.

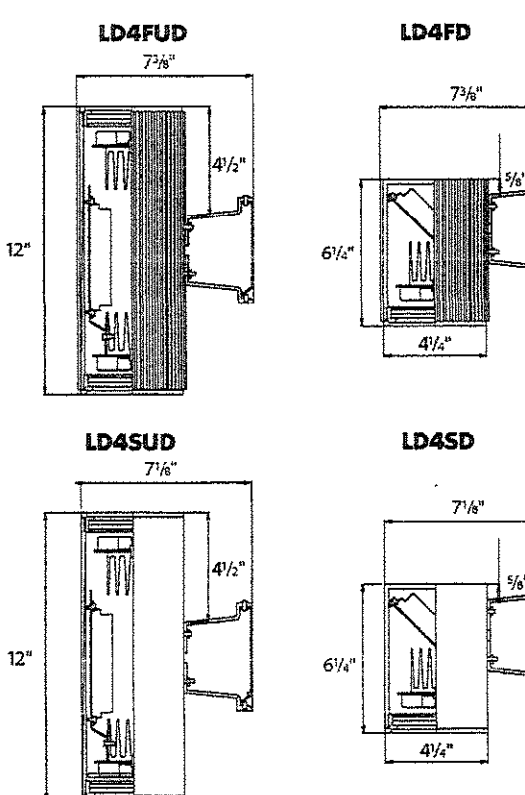
HOUSING:
.125" thick seamless extruded aluminum cylinder with diecast aluminum, arm, and mounting bracket. Interlocking parts insure proper cylinder alignment. Gasketed die cast lens ring is threaded to screw into cylinder for snug fit. The rings are provided with anti-rotation set screws that lock them in place. Durable powder coated paint finish. Specify: matte black, matte white, bronze, or Prescolite's exclusive Zet, metallic silver. All components are non-corrosive.

LEDs:
Each array is equipped with (6) 1 watt, 80 CRI LEDs with integral heat sink that will provide 70% average lumen maintenance at 50,000 hours.

LED DRIVER:
Energy efficient electronic constant current, non-dimming driver with 50,000 hour minimum anticipated life. Meets UL Class 2, FCC 4FCR Class A compliant, inherent short-circuit protection, self limited, overload protected.

LABELS:
CSA C/US Suitable for wet location.

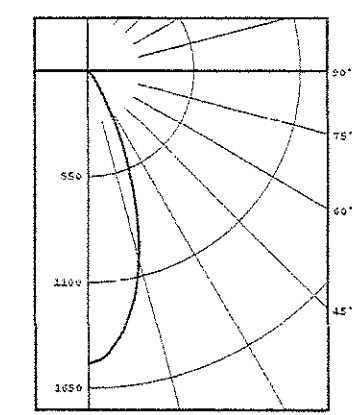
WARRANTY:
5 year warranty. See www.prescolite.com for details.



PHOTOMETRIC DATA

LiteForms® - LD4 - 4" Direct/Indirect LED Wall Mount Cylinder

LD4SD6L50KFL30B1
LED Light Engine: (1) 6-Ring Array w/ (6) LEDs w/ Optical Lens
System Voltage: 8.4
Fixture delivered lumens: 697
Fixture Efficiency: 83
Spacing Criteria: 0.6



ZONAL LUMEN SUMMARY			LUMINANCE DATA IN CANDELA/ SQ. METER	
ZONE	LUMENS	% LUMINAIRE	Angle in Vertical	Average-CF*
0-30	595	85.3	45°	3158
0-40	655	94.1	55°	2690
0-50	687	98.6	65°	1992
0-90	697	100.0	75°	1626
90-180	0	0.0	85°	0
0-180	697	100.0		

COEFFICIENTS OF UTILIZATION - Zonal Cavity Method	
*Uniform Rec. Cavity Reflection	
% Wall Reflection	% Ceiling/Flat Floor Reflection
80%	70%
70%	50%
50%	30%
30%	10%

Test No. 8898
Tested at 25°C Ambient in accordance to IESNA LM-79:2008

Photometric Data Table

Description	Value	Unit	
Total proposed external lumens	1394	Lumens	
Total square footage of area to be illuminated	400	Square Feet	
Fixture #	Description	Value	Unit
1	i. Type of Fixture	Cylinder Wall Mount	
	ii. Manufacturer and model number	Prescolite/LiteForms LD4SD	
	iii. Number of these Fixtures Shown	2	fixtures
	iv. Lamp source type	LED	
	v. Lumen output and wattage per fixture	697/8.4	Lumens/Watts
	vi. Mounting Height/Fixture Height	8' & 12'	Feet

REVISIONS	BY

John Anderson, Owner
(630) 801-1230

GARAGE ADDITION
A Touch of Glass and Mirror
939 Montgomery Ave.
Aurora, IL 60506

PHOTOMETRIC LAYOUT

Lance A. Weber - Architect
2090 Jericho Road, Aurora IL 60506
630.264.1705

DATE	0-10-15
SCALE	1" = 10'-0"
DRAWN	LAW
JOB	
SHEET	2
OF	4 SHEETS