

ARCHITECTURAL EXTERIOR ELEVATIONS

GENERAL NOTES:

1. ALL COLOR NAMES INDICATED ARE FOR SELECTION PURPOSES ONLY. SEE PAINT SPECS FOR SPECIFIC REQUIREMENTS. DESCRIPTION: (ALL "SHERWIN / WILLIAMS" NUMBERS "SW" COLORS)
2. APPLY CLEAR COAT OVER "LUXURIOUS RED" ON EXTERIOR APPLICATIONS.
3. ALL SIGNAGE SHOWN IS FOR ILLUSTRATION PURPOSES ONLY. ALL SIGNAGE IS UNDER SEPARATE PERMIT AND FINAL DESIGN IS BY SIGNAGE VENDOR.

EXTERIOR FINISH KEY

	ALUMINUM STOREFRONT MFR: KAWNEER 1" INSULATED GLASS FRAMES: CLEAR ANODIZED
	PREFINISHED METAL COPING / FASCIA MFR: FIRESTONE UNA-CLAD COLOR: SW7674 PEPPERCORN
	BRICK VENEER MFR: ACME COLOR: EBONY MORTAR: WESTERN LIME CORP W-11
	BRICK VENEER MFR: ACME COLOR: GLACIER WHITE MORTAR: WESTERN LIME CORP W-11
	BRICK VENEER MFR: ACME COLOR: CRANBERRY MORTAR: WESTERN LIME CORP W-11

MATERIAL PERCENTAGES

- NORTH ELEVATION**
- BRICK = 978 S.F. (84%)
 - EIFS = 186 S.F. (16%)
- EAST ELEVATION**
- BRICK = 450 S.F. (42%)
 - EIFS = 631 S.F. (58%)
- SOUTH ELEVATION**
- BRICK = 806 S.F. (71%)
 - EIFS = 334 S.F. (29%)
- WEST ELEVATION**
- BRICK = 343 S.F. (32%)
 - EIFS = 736 S.F. (68%)

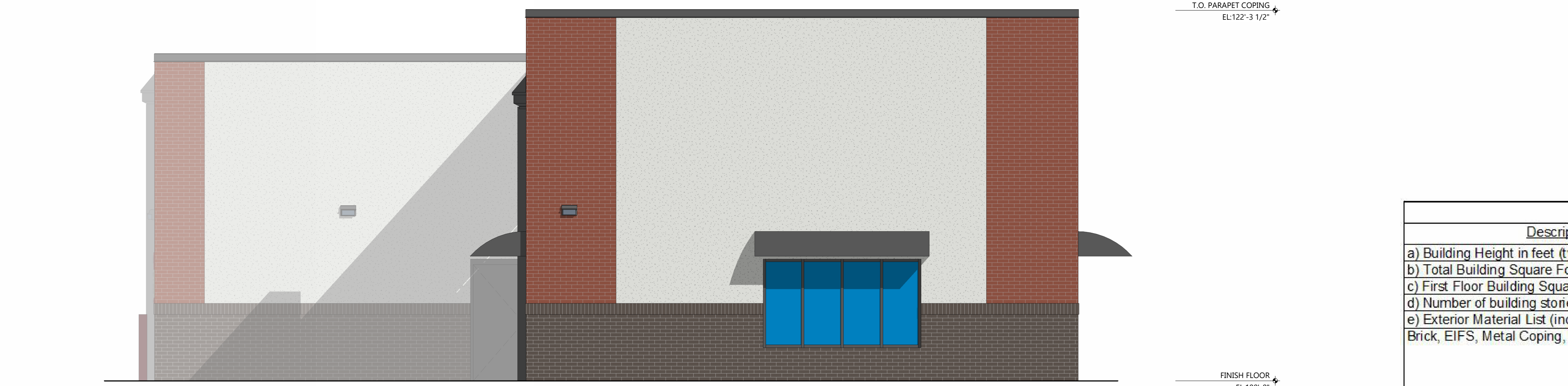
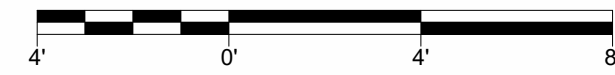
Elevation Data Table: Elevations

Description	Value	Unit
a) Building Height in feet (typical)	22.29	feet
b) Total Building Square Footage (typical)	3,786.00	Square Feet
c) First Floor Building Square Footage (typical)	2,902.00	Square Feet
d) Number of building stories (typical)	1.00	Square Feet
e) Exterior Material List (including colors) for all buildings and accessory structures: Brick, EIFS, Metal Coping, Metal Canopy, Split-Face CMU (Dumpster Enclosure)		



NORTH ELEVATION

SCALE: 1/4" = 1'-0"



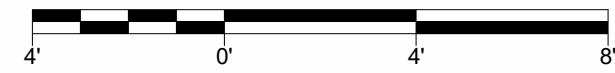
EAST ELEVATION

SCALE: 1/4" = 1'-0"



SOUTH ELEVATION

SCALE: 1/4" = 1'-0"



Always a Better Plan

100 Camelot Drive
Fond du Lac, WI 54935
920-926-9800
excelengineer.com

PROJECT INFORMATION

PROPOSED JIFFY LUBE ELEVATIONS FOR:
GUGGENHEIN DEVELOPMENT SERVICES, LLC
EOLA RD & N. AURORA RD. • AURORA, IL

PROFESSIONAL SEAL

PRELIMINARY DATES

FEB. 20, 2026
FEB. 24, 2026
FEB. 25, 2026
MAR. 24, 2026
APR. 02, 2026

NOT FOR CONSTRUCTION

JOB NUMBER

250429200

SHEET NUMBER






A-4

ARCHITECTURAL EXTERIOR ELEVATIONS

GENERAL NOTES:

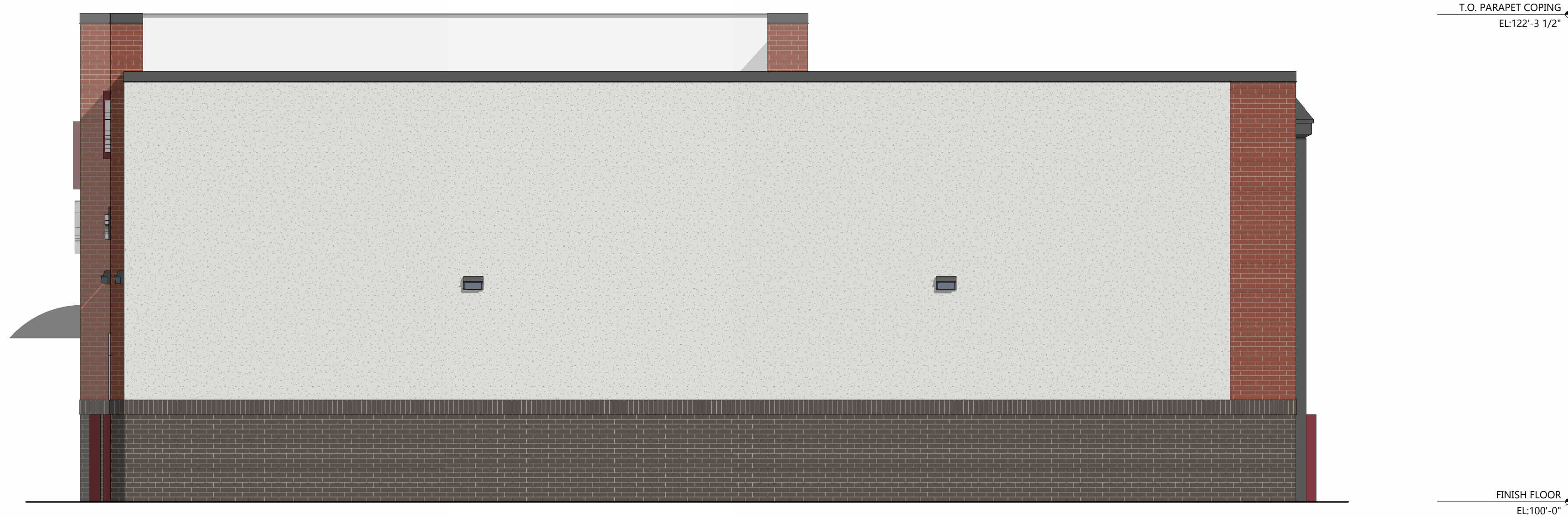
1. ALL COLOR NAMES INDICATED ARE FOR SELECTION PURPOSES ONLY. SEE PAINT SPECS FOR SPECIFIC REQUIREMENTS. DESCRIPTION: (ALL "SHERWIN / WILLIAMS" NUMBERS "SW" COLORS).
2. APPLY CLEAR COAT OVER "LUXURIOUS RED" ON EXTERIOR APPLICATIONS.
3. ALL SIGNAGE SHOWN IS FOR ILLUSTRATION PURPOSES ONLY. ALL SIGNAGE IS UNDER SEPARATE PERMIT AND FINAL DESIGN IS BY SIGNAGE VENDOR.

EXTERIOR FINISH KEY

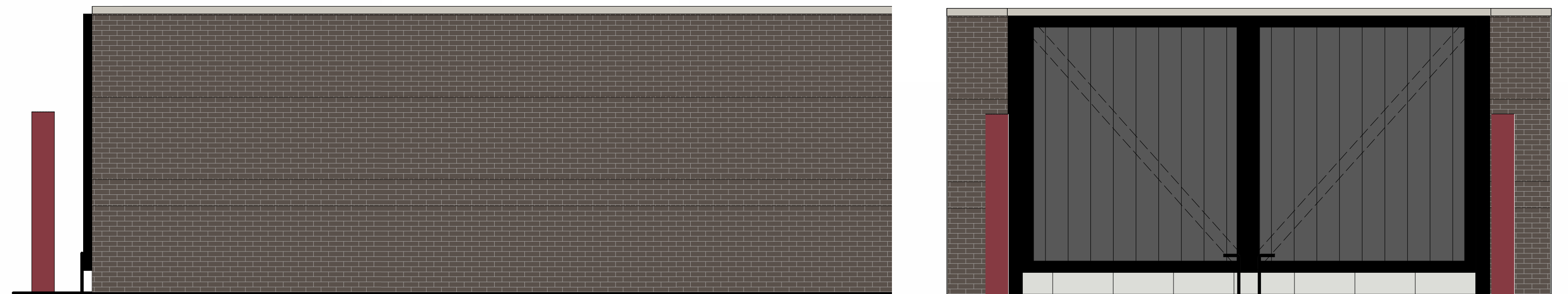
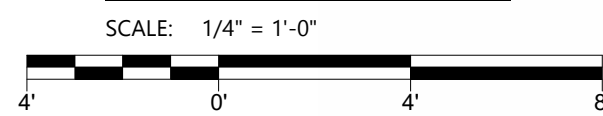
-  ALUMINUM STOREFRONT
MFR: KAWNEER
1" INSULATED GLASS
FRAMES: CLEAR ANODIZED
-  PREFINISHED METAL COPING / FASCIA
MFR: FIRESTONE UNA-CLAD
COLOR: SW7674 PEPPERCORN
-  BRICK VENEER
MFR: ACME
COLOR: EBONY
MORTAR: WESTERN LIME CORP W-11
-  BRICK VENEER
MFR: ACME
COLOR: GLACIER WHITE
MORTAR: WESTERN LIME CORP W-11
-  BRICK VENEER
MFR: ACME
COLOR: CRANBERRY
MORTAR: WESTERN LIME CORP W-11

MATERIAL PERCENTAGES

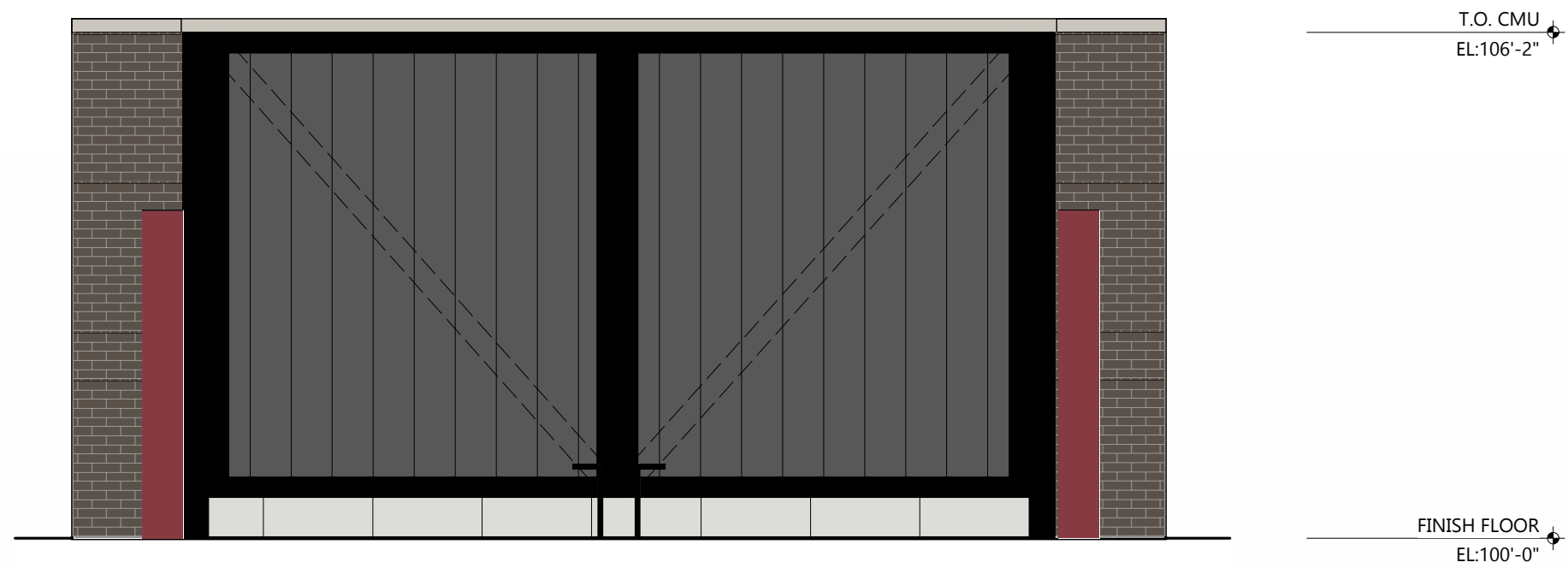
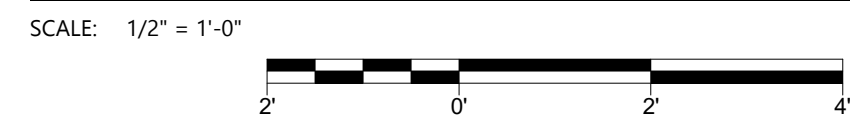
- NORTH ELEVATION**
- BRICK = 978 S.F. (84%)
 - EIFS = 186 S.F. (16%)
- EAST ELEVATION**
- BRICK = 450 S.F. (42%)
 - EIFS = 631 S.F. (58%)
- SOUTH ELEVATION**
- BRICK = 806 S.F. (71%)
 - EIFS = 334 S.F. (29%)
- WEST ELEVATION**
- BRICK = 343 S.F. (32%)
 - EIFS = 736 S.F. (68%)



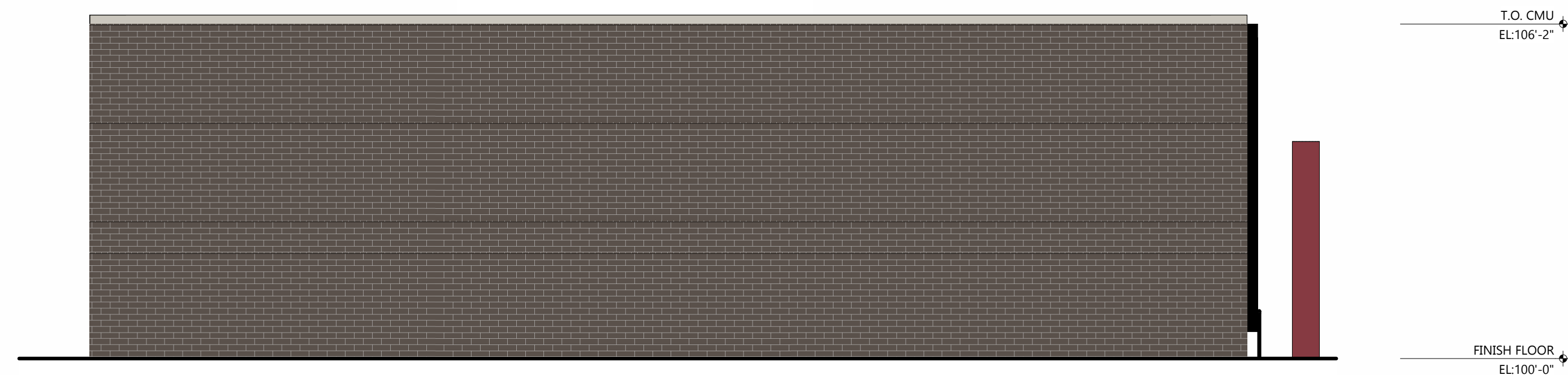
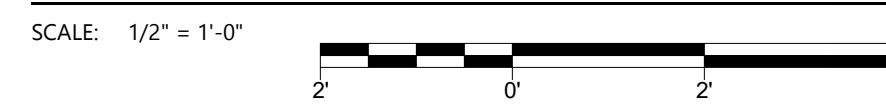
WEST ELEVATION



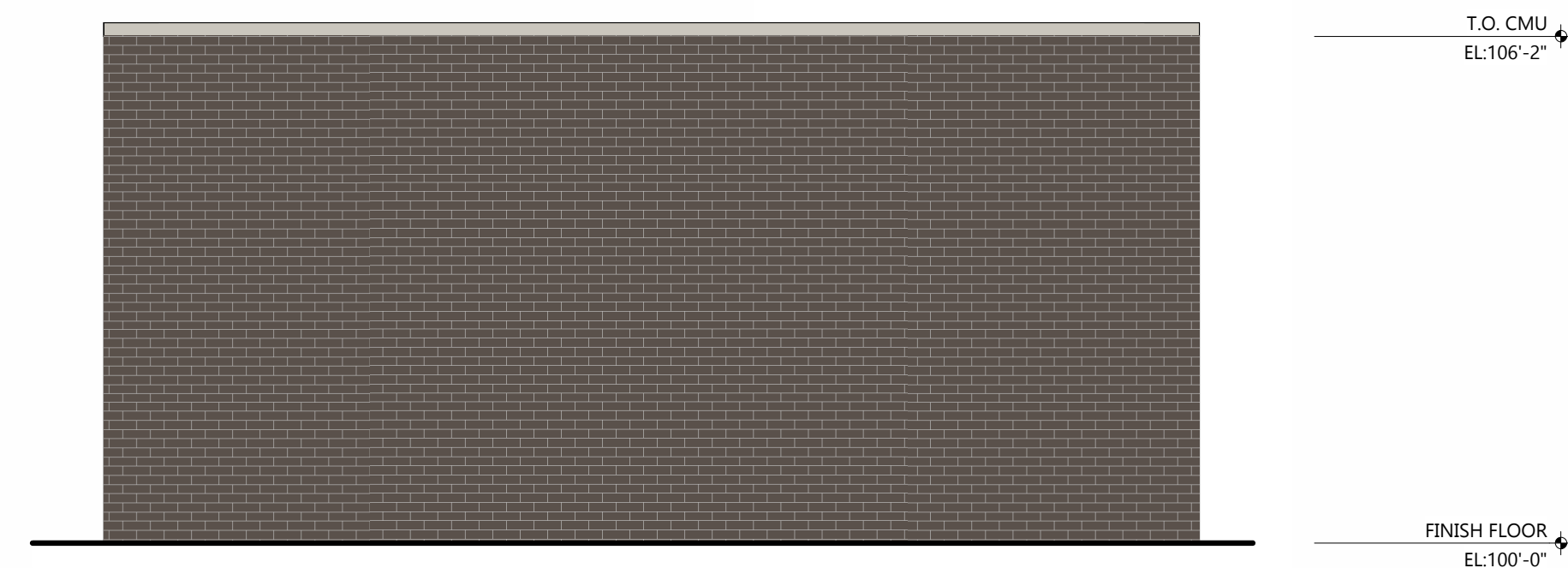
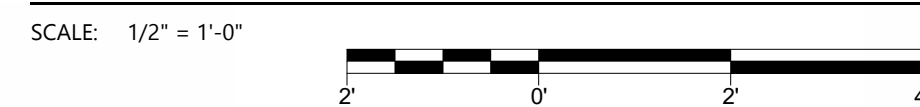
NORTHEAST DUMPSTER ENCLOSURE ELEVATION



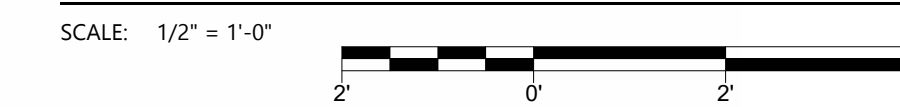
SOUTHEAST DUMPSTER ENCLOSURE ELEVATION



SOUTHWEST DUMPSTER ENCLOSURE ELEVATION



NORTHWEST DUMPSTER ENCLOSURE ELEVATION



Elevation Data Table: Elevations		
Description	Value	Unit
a) Building Height in feet (typical)	22.29	feet
b) Total Building Square Footage (typical)	3,786.00	Square Feet
c) First Floor Building Square Footage (typical)	2,902.00	Square Feet
d) Number of building stories (typical)	1.00	Square Feet
e) Exterior Material List (including colors) for all buildings and accessory structures: Brick, EIFS, Metal Coping, Metal Canopy, Split-Face CMU (Dumpster Enclosure)		



PROJECT INFORMATION

PROPOSED JIFFY LUBE ELEVATIONS FOR:
GUGGENHEIN DEVELOPMENT SERVICES, LLC
 EOLA RD & N. AURORA RD. • AURORA, IL

PROFESSIONAL SEAL

PRELIMINARY DATES

- FEB. 20, 2026
- FEB. 24, 2026
- FEB. 25, 2026
- MAR. 24, 2026
- APR. 02, 2026

NOT FOR CONSTRUCTION

JOB NUMBER

250429200

SHEET NUMBER

A-4.1