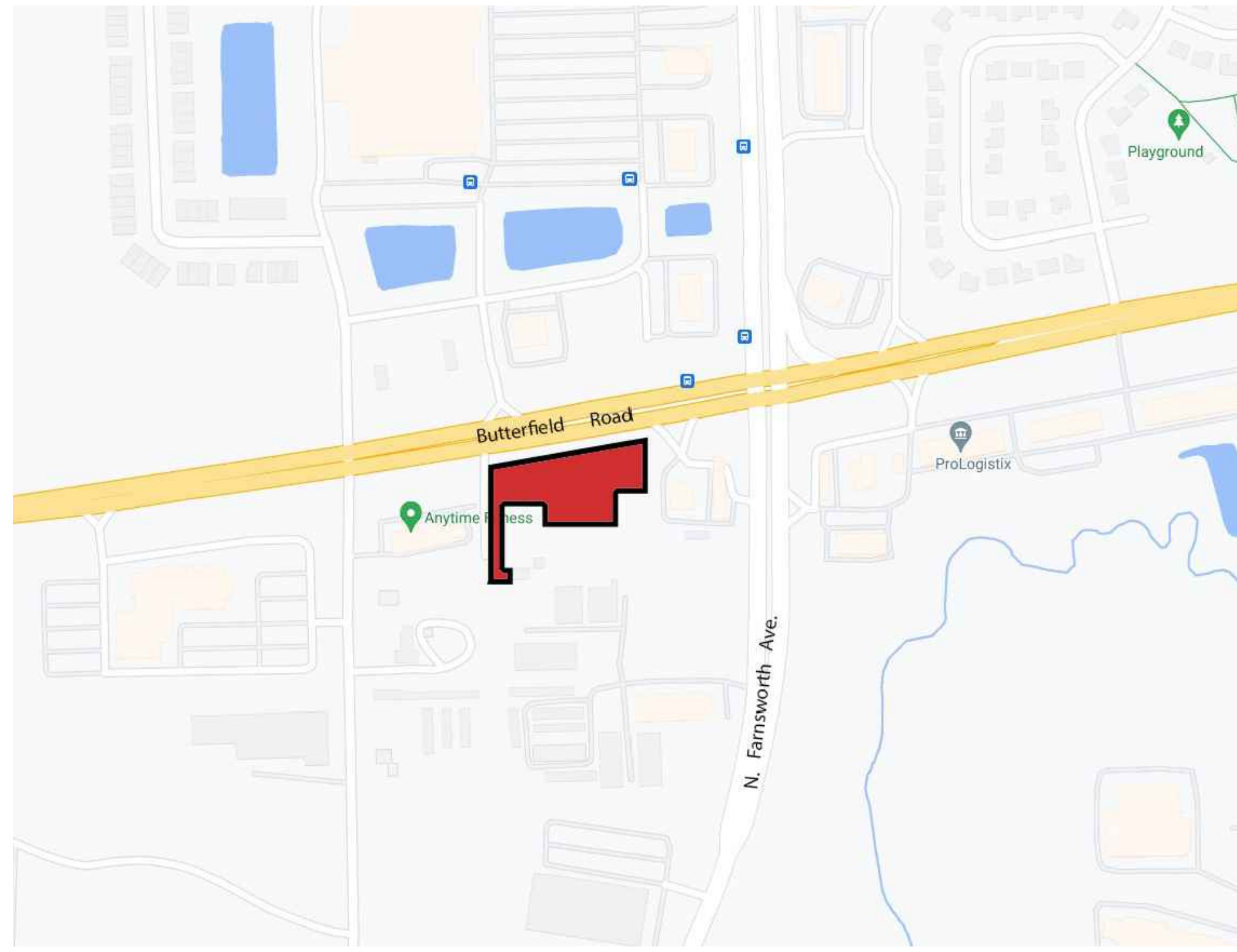


Landscape Implementation Plan for PAS Plaza Subdivision - Lot 2

Belle Tire, Aurora, IL



1 PROJECT LOCATION MAP

NOT TO SCALE

PRELIMINARY PLANT LIST

SYM	SIZE	QTY	BOTANICAL NAME	COMMON NAME	COMMENT
DECIDUOUS SHADE TREES					
AFA	2.5" cal.	2	Acer x freemanii 'Autumn Blaze'	Autumn Blaze Freeman Maple	B&B
ARF	2.5" cal.	7	Acer rubrum 'Frank Jr.'	Redpointe Red Maple	B&B
CEO	2.5" cal.	3	Celtis occidentalis	Common Hackberry	B&B
GDE	2.5" cal.	5	Gymnocladus dioicus 'Espresso'	Espresso Kentucky Coffeetree	B&B
GTS	2.5" cal.	6	Gleditsia triacanthos 'Shademaster'	Shademaster Honeylocust	B&B
LSM	2.5" cal.	6	Liquidambar styraciflua 'Moraine'	Moraine American Sweetgum	B&B
QUR	2.5" cal.	2	Quercus rubra	Red Oak	B&B
TAM	2.5" cal.	6	Tilia americana 'MckSentry'	American Sentry Linden	B&B
TCG	2.5" cal.	3	Tilia cordata 'Greenspire'	Greenspire Littleleaf Linden	B&B
ULA	2.5" cal.	5	Ulmus davidiana var. japonica 'Morton'	Accolade Elm	B&B
ORNAMENTAL TREES					
AMG	6' multi.	2	Amelanchier x grandiflora.	Shadblow Serviceberry	B&B
COF	6' multi.	5	Cornus florida	White Flowering Dogwood	B&B
MAP	6' multi.	2	Malus x 'Prairiefire'	Prairiefire Flowering Crabapple	B&B
EVERGREEN TREES					
PGD	6' HT.	10	Picea glauca 'Densata'	Black Hills Spruce	B&B
DECIDUOUS SHRUBS					
AAB	18" ht.	39	Aronia arbutifolia 'Brilliantissima'	Brilliant Red Chokeberry	B&B
AMA	18" ht.	8	Aronia melanocarpa 'Elata'	Elata Chokeberry	B&B
CAM	18" ht.	9	Cornus alba 'Elegantissima'	Variagated Dogwood	B&B
CSF	18" ht.	18	Cornus stolonifera 'Farrow'	Arctic Fire Redtwig Dogwood	B&B
FOS	18" ht.	11	Forsythia x ovata 'Sunrise'	Sunrise Forsythia	B&B
POB	18" ht.	42	Physocarpus opulifolius 'Monlo'	Diabolo Ninebark	B&B
RAG	18" w.	11	Rhus aromatica 'Gro-Low'	Gro-Low Fragrant Sumac	B&B
SPB	18" w.	9	Spiraea x bumalda 'Anthony Waterer'	Anthony Waterer Spirea	B&B
SYM	18" ht.	12	Syringa patula 'Miss Kim'	Miss Kim Korean Lilac	B&B
VCC	18" ht.	12	Viburnum carlesii 'Compactum'	Koreanspice Viburnum	B&B
VDS	18" ht.	7	Viburnum dentatum 'synnesvedt'	Chicagoland Arrowwood Viburnum	B&B
VTC	18" ht.	20	Viburnum trilobum 'Alfredo'	Alfredo American Cranberrybush	B&B
EVERGREEN SHRUBS					
JCS	18" ht.	36	Juniperus chinensis 'Sea Green'	Sea Green Juniper	B&B
TMT	18" w.	34	Taxus x media 'Taunton'	Taunton's Yew	B&B
ORNAMENTAL GRASSES					
CAA	#1 gal.	37	Calamagrostis acutifolia 'Strictus'	Strictus Feather Reed Grass	4' Max. Ht.
GROUND COVER / PERENNIALS					
ACH	#1 cont.	36	Achillea Millefolium 'Paprika'	Paprika Yarrow	18" O.C.
ALS	#1 cont.	42	Allium 'summer beauty'	Summer Beauty Wild Onion	18" O.C.
CVM	#1 cont.	16	Coreopsis verticillata 'Moonbeam'	Moonbeam Coreopsis	18" O.C.
ECP	#1 cont.	22	Echinacea purpurea 'Magnus'	Magnus Purple Coneflower	24" O.C.
GEM	#1 cont.	18	Geranium sanguineum 'Max frei'	Max Frei Bloody Cranesbill	18" O.C.
HEC	#1 cont.	40	Hemerocallis x 'Chicago Apache'	Chicago Apache Daylily	24" O.C.
LAV	#1 cont.	22	Lavendula 'Munstead strain'	Munstead English Lavender	24" O.C.
LEU	#1 cont.	16	Leucanthemum x 'Whoops-a-Daisy'	Whoops-a-Daisy Shasta Daisy	18" O.C.
NFW	#1 cont.	18	Nepeta fasseni 'Walker's low'	Walkers Low Catmint	24" O.C.
RUD	#1 cont.	30	Rudbeckia fulgida 'Goldsturm'	Goldsturm Black-Eyed Susan	18" O.C.
SED	#1 cont.	12	Sedum x 'Autumn joy'	Autumn Joy Sedum	18" O.C.
SOD	sq. yd.	1036	Sodded Lawn		
SEED	sq. yd.	5280	Seeded Lawn		

Landscape Implementation Data Table: Plant List by Category							
	QTY	Percent	SYM	BOTANICAL NAME (Family / Genus / Species)	COMMON NAME	SIZE	COMMENTS
Canopy Trees	2	4%	AFA	Acer x freemanii 'Autumn Blaze'	Autumn Blaze Freeman Maple	2.5" cal.	B&B
	7	16%	ARF	Acer rubrum 'Frank Jr.'	Redpointe Red Maple	2.5" cal.	B&B
	3	7%	CEO	Celtis occidentalis	Common Hackberry	2.5" cal.	B&B
	5	11%	GDE	Gymnocladus dioicus 'Espresso'	Espresso Kentucky Coffeetree	2.5" cal.	B&B
	6	13%	GTS	Gleditsia triacanthos 'Shademaster'	Shademaster Honeylocust	2.5" cal.	B&B
	6	13%	LSM	Liquidambar styraciflua 'Moraine'	Moraine American Sweetgum	2.5" cal.	B&B
	2	4%	QUR	Quercus rubra	Red Oak	2.5" cal.	B&B
	6	13%	TAM	Tilia americana 'MckSentry'	American Sentry Linden	2.5" cal.	B&B
	3	7%	TCG	Tilia cordata 'Greenspire'	Greenspire Linden	2.5" cal.	B&B
	5	11%	ULA	Ulmus davidiana var. japonica 'Morton'	Accolade Elm	2.5" cal.	B&B
Total:	45	100%					
Evergreen Trees	10	100%	PGD	Picea glauca 'Densata'	Black Hills Spruce	6' ht.	B&B
	Total:	10	100%				
Understory Trees	2	22%	AMG	Amelanchier x grandiflora	Shadblow serviceberry	6' ht.	B&B
	5	56%	COF	Cornus florida	White flowering Dogwood	6' ht.	B&B
	2	22%	MAP	Malus x 'Prairiefire'	Prairiefire Crabapple	6' ht.	B&B
	Total:	9	100%				
Deciduous Shrubs	39	20%	AAB	Aronia arbutifolia 'Brilliantissima'	Brilliant Red Chokeberry	18" ht.	B&B
	8	4%	AMA	Aronia melanocarpa 'Elata'	Elata Chokeberry	18" ht.	B&B
	9	5%	CAM	Cornus alba 'Elegantissima'	Variagated Dogwood	18" ht.	B&B
	18	9%	CSF	Cornus stolonifera 'Farrow'	Arctic Fire Redtwig Dogwood	18" ht.	B&B
	11	6%	FOS	Forsythia x ovata 'Sunrise'	Sunrise Forsythia	18" ht.	B&B
	42	21%	POB	Physocarpus opulifolius 'Monlo'	Diabolo Ninebark	18" ht.	B&B
	11	6%	RAG	Rhus aromatica 'Gro-Low'	Gro-Low Fragrant Sumac	18" ht.	B&B
	9	5%	SPB	Spiraea x bumalda 'Anthony Waterer'	Anthony Waterer Spirea	18" ht.	B&B
	12	6%	SYM	Syringa patula 'Miss Kim'	Miss Kim Korean Lilac	18" ht.	B&B
	12	6%	VCC	Viburnum carlesii 'Compactum'	Koreanspice Viburnum	18" ht.	B&B
	7	4%	VDS	Viburnum dentatum 'synnesvedt'	Chicagoland Arrowwood Viburnum	18" ht.	B&B
	20	10%	VTC	Viburnum trilobum 'Alfredo'	Alfredo American Cranberrybush	18" ht.	B&B
	Total:	198	100%				
Evergreen Shrubs	36	51%	JCS	Juniperus chinensis 'Sea Green'	Sea Green Juniper	18" ht.	B&B
	34	49%	TMT	Taxus x media 'Taunton'	Taunton's Yew	18" w.	
Total:	70	100%					
Ornamental Grasses:	37	100%	CAA	Calamagrostis acutifolia 'Strictus'	Featherreed Grass	1 Gal.	4' Max Height
Total:	37	100%					

Landscape Data Table: CTEs Provided			
	CTE Value	Count Provided	Total CTEs Provided
Canopy Trees	1	45	45
Evergreen Trees	1/3	10	3
Understory Trees	1/3	9	3
Deciduous Shrubs	1/20	198	10
Evergreen Shrubs	1/20	70	4
Oversizing Credit			0
Total:		332	65

Landscape Data Table: Planting Material Key	
Note: Symbols are guidelines for proposed placement for existing	
Canopy Trees (minimum size 2.5 caliper) Count:	45
Evergreen Trees (minimum size 6 feet) Count:	10
Understory Trees (minimum size 2.5 caliper or 6 feet if multi-stemmed) Count:	9
Evergreen Shrubs (minimum of 18 inches) Count:	70
Deciduous Shrubs (minimum of 18 inches) Count:	198
Ornamental Grasses Count:	37
Perennials Count:	272
Annuals Count:	0
Groundcover Square Footage:	0
Turf (Seeded) Square Footage:	47,520
Turf (Sod) Square Footage:	9,324
Native Prairie Planting Square Footage:	0
Native Wetland Planting Square Footage:	0



628 E. Parent Avenue
Suite 100
Royal Oak, MI 48067
248.258.6485 (O)
248.330.9395 (C)
cenright@enrightarchitects.com

Consultant
LG Workshop.LLC
Landscape Architecture
Site Planning
Illustration
1955 N. Wilmot Avenue
Chicago, IL 60647
ph. 773.697.4388
www.LGWLA.com

Project
**BELLE TIRE
AURORA, IL**

XXXX BUTTERFIELD RD
AURORA, IL 60502

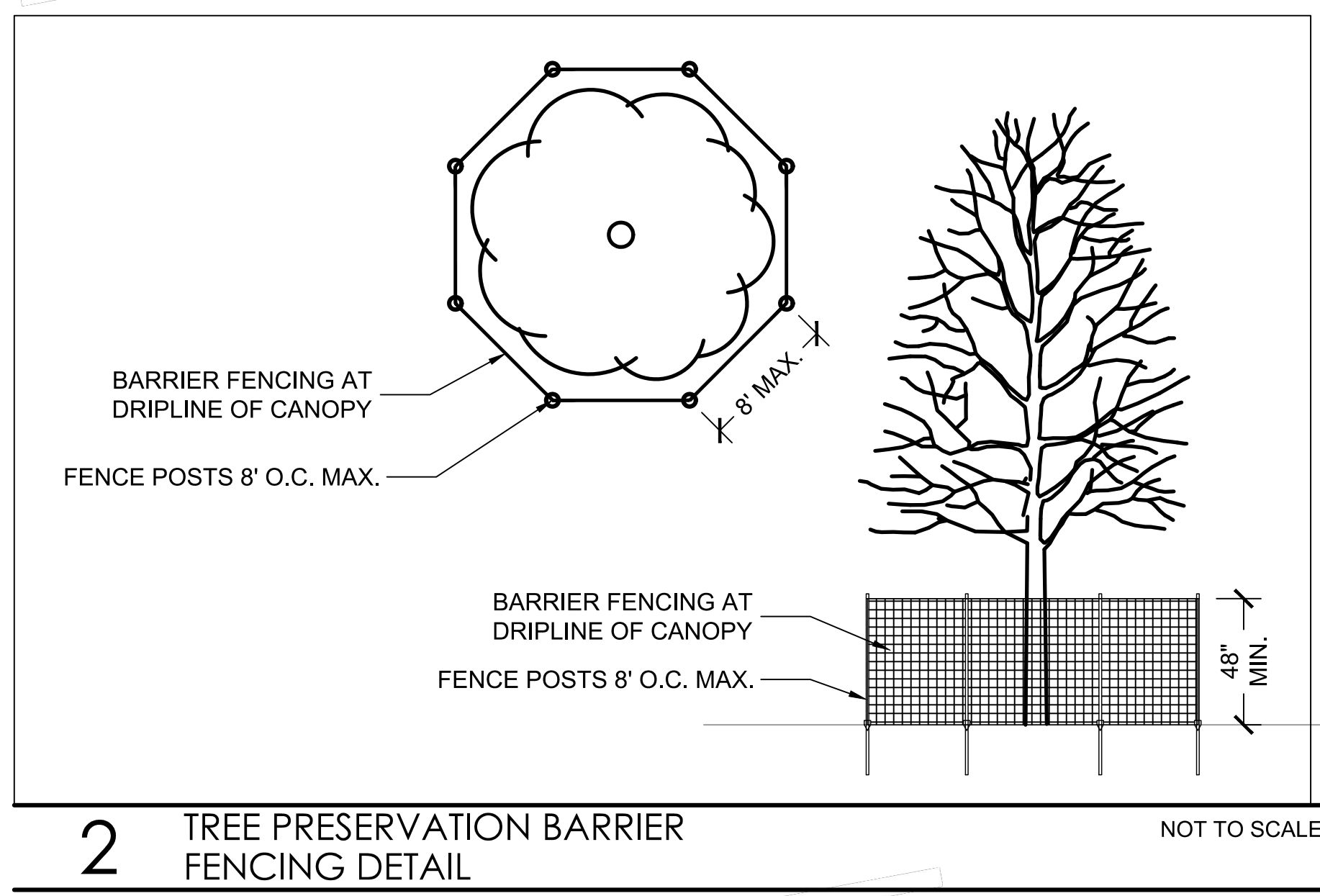
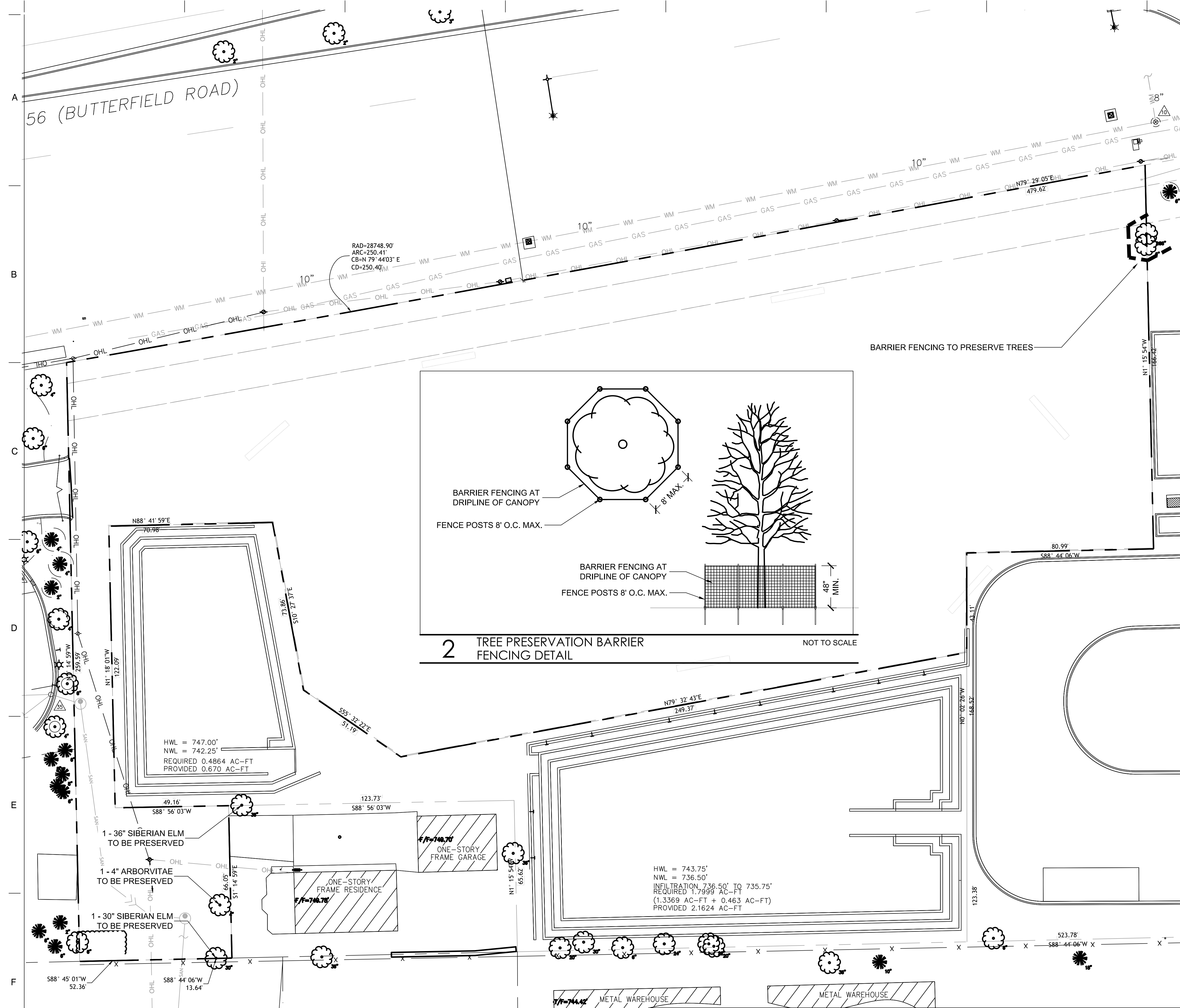
Sheet
Landscape Implementation Plan
for
PAS Plaza Subdivision - Lot 2

LANDSCAPE COVER
SHEET

Issued for
2023.06.14 CITY / IDOT SUBMITTAL
2023.07.07 CITY RESUBMITTAL
2023.08.04 CITY RESUBMITTAL

Sheet Number
23-140

L.0



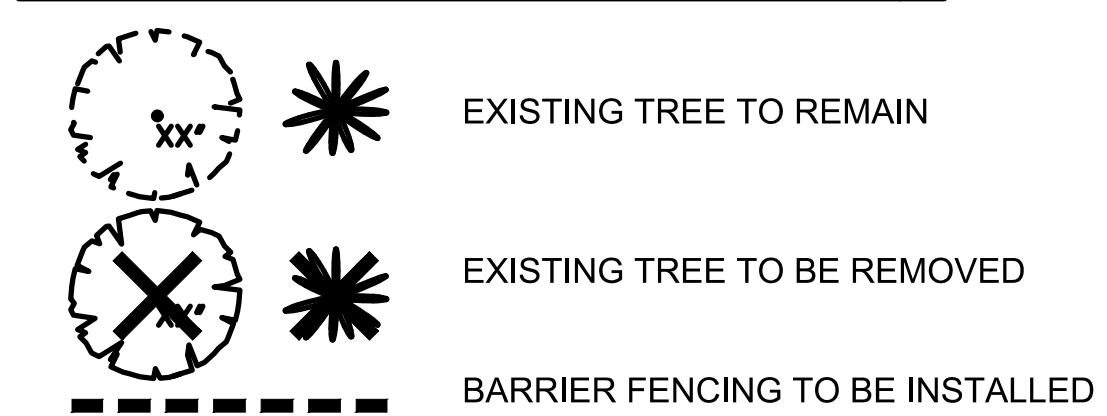
EXISTING VEGETATION DESCRIPTION

THE PROJECT SITE CONSISTS OF A VACANT LOT. ONLY 2 (TWO) TREES IN THE NE EXIST ON THE PROPERTY AND WILL BE SAVED. AN ADDITIONAL OFF-SITE TREE IN THE NW WILL BE PROTECTED NEAR THE NEW CURB TIE-IN.

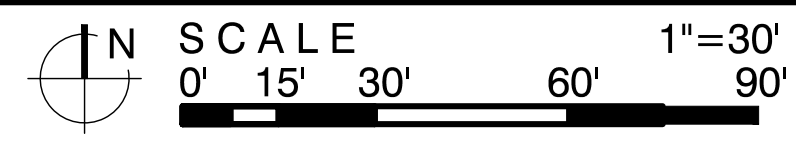
TREE PROTECTION & REMOVAL NOTES

- CONTRACTOR SHALL OBTAIN ALL NECESSARY STATE AND LOCAL PERMITS AND PERMISSIONS TO PRUNE, REMOVE, AND/OR TRANSPLANT ANY TREES ON SITE.
- DEAD AND DYING MATERIAL ON THE SITE SHALL BE REMOVED OR PRUNED. MATERIALS NOT LABELED ON THE PROTECTION PLAN SHALL BE BROUGHT TO THE ATTENTION OF THE LANDSCAPE ARCHITECT FOR REMEDIATION.
- DURING CONSTRUCTION EXISTING TREES OVER FOUR INCHES IN CALIPER SHALL BE PROTECTED WITH BARRIER FENCING.
- BARRIER SHALL BE CONSTRUCTED OF A MIN. 3' TALL SNOW FENCE OR SIMILAR AND SUPPORT POSTS MIN. 6' O.C. AND SHALL BE ERECTED ONE FOOT BEYOND THE DRIP LINE OFF ALL EXISTING TREES ON SITE AND ADJACENT SITES TO REMAIN.
- BARRIER FENCING SHOWN ON THE PLAN IS APPROXIMATE. CONTRACTOR SHALL ADJUST LOCATION OF BARRIER TO POSITION OUTLINED IN COMMENT 4.
- NO EXCESS SOIL OR ADDITIONAL FILL, BUILDING MATERIALS OR DEBRIS SHALL BE PLACED WITHIN THE PROTECTIVE BARRIER.
- NO VEHICLES OR HEAVY MACHINERY SHALL BE ALLOWED TO WORK WITHIN THE BARRIER AREA.
- NO ATTACHMENTS OR WIRES, OTHER THAN PROTECTIVE GUY WIRES, SHALL BE ATTACHED TO ANY OF THE TREES WHICH ARE WITHIN PROTECTIVE BARRIER.
- STUMPS OR TREE REMAINS NOT TO BE FULLY EXCAVATED SHALL BE REMOVED. A STUMP GRINDER SHALL BE USED TO REMOVE ALL REMAINING ROOTS AND WOODY MATERIAL WITHIN A 24" RADIUS OF THE TREE TRUNK TO MIN. 6" BELOW GRADE. DISTURBED AREA SHALL BE BACKFILLED WITH COMPACTED TOPSOIL TO MEET SURROUNDING GRADES.

TREE PROTECTION & REMOVAL LEGEND



1 TREE PROTECTION & REMOVAL PLAN



CHRISTOPHER ENRIGHT ARCHITECTS
A PROFESSIONAL CORPORATION

628 E. Parent Avenue
Suite 100
Royal Oak, MI 48067
248.258.6485 (O)
248.330.9395 (C)
cenright@enrightarchitects.com

LG Workshop .LLC
Landscape Architecture
Site Planning
Illustration
1955 N. Wilmot Avenue
Chicago, IL 60647
ph. 773.697.4388
www.LGWLA.com

BELLE TIRE AURORA, IL

XXXX BUTTERFIELD RD
AURORA, IL 60502

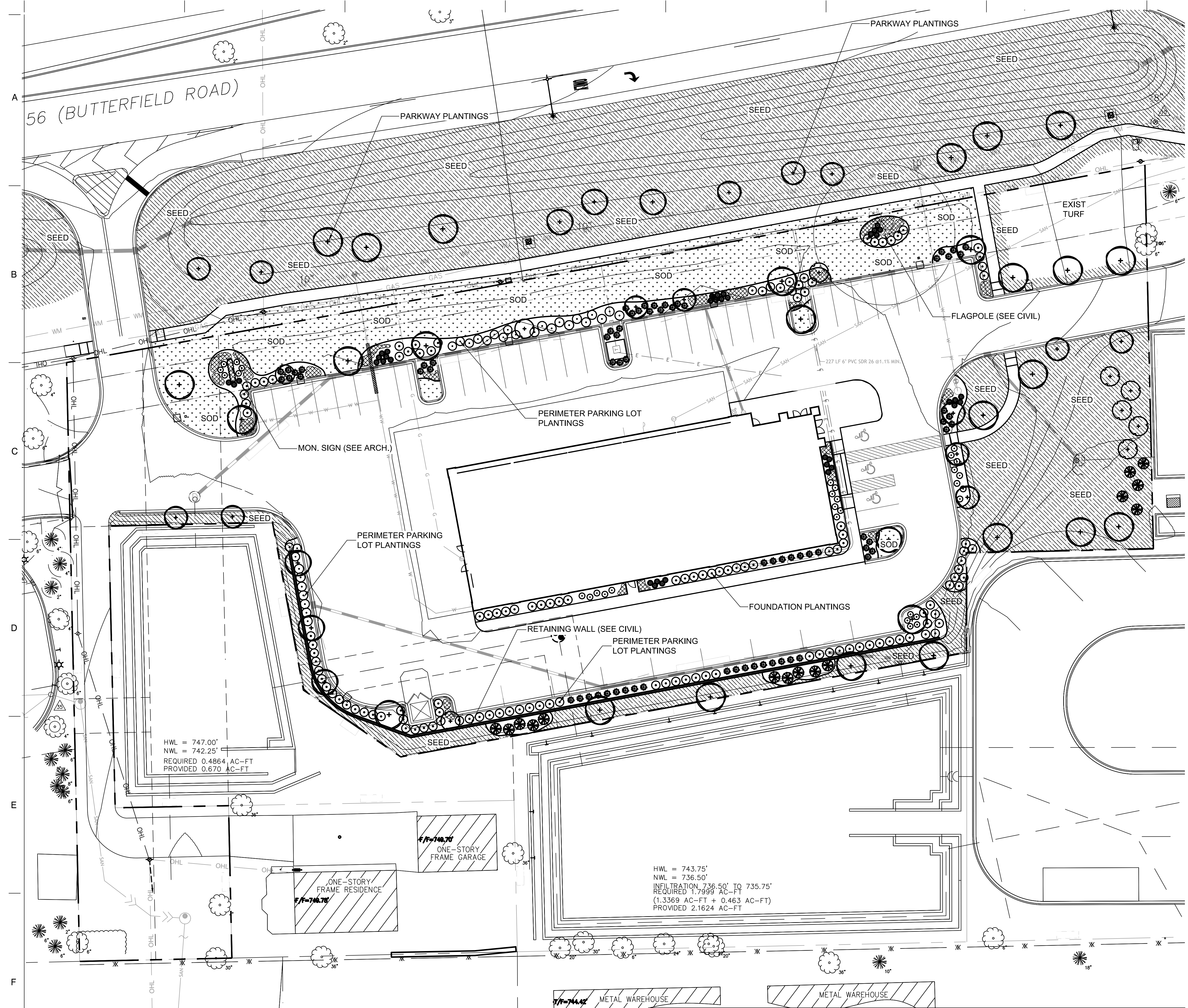
Landscape Implementation Plan
for
PAS Plaza Subdivision - Lot 2

TREE PROTECTION & REMOVAL PLAN

Issue for:
2023.06.14 CITY / IDOT SUBMITTAL
2023.07.07 CITY RESUBMITTAL
2023.08.04 CITY RESUBMITTAL

Project Number
23-140

Sheet Number
L.1



LANDSCAPE LEGEND

	EXISTING TREE
	PROPOSED SHADE TREE
	PROPOSED EVERGREEN TREE
	PROPOSED ORNAMENTAL TREE
	PROPOSED DECIDUOUS SHRUB
	PROPOSED EVERGREEN SHRUB
	PROPOSED ORNAMENTAL GRASS
	PROPOSED PERENNIAL PLANTING
	TURF LAWN - SEED
	TURF LAWN - SODDED

1 LANDSCAPE PLAN SCALE 1"=30'
0' 15' 30' 60' 90'



CHRISTOPHER ENRIGHT ARCHITECTS
A PROFESSIONAL CORPORATION

628 E. Parent Avenue
Suite 100
Royal Oak, MI 48067
248.258.6485 (O)
248.330.9395 (C)
cenright@enrightarchitects.com

LG Workshop, LLC Landscape Architecture
Site Planning
Illustration
1955 N. Wilmot Avenue
Chicago, IL 60647
ph. 773.697.4388
www.LGWLA.com

**BELLE TIRE
AURORA, IL**

XXXX BUTTERFIELD RD
AURORA, IL 60502

**Landscape Implementation Plan
for
PAS Plaza Subdivision - Lot 2**

**PRELIMINARY
LANDSCAPE PLAN**

Issued for:
2023.06.14 CITY / IDOT SUBMITTAL
2023.07.07 CITY RESUBMITTAL
2023.08.04 CITY RESUBMITTAL

Project Number
23-140

Sheet Number
L.2

A

B

C

D

E

F

PRELIMINARY PLANT LIST AND COUNT

Table with 5 columns: SYM, SIZE, QTY, BOTANICAL NAME, COMMON NAME, COMMENT. Lists deciduous shade trees like Acer x freemanii, Acer rubrum, etc.

Table with 5 columns: SYM, SIZE, QTY, BOTANICAL NAME, COMMON NAME, COMMENT. Lists ornamental trees like Amelanchier x grandiflora, Cornus florida, etc.

Table with 5 columns: SYM, SIZE, QTY, BOTANICAL NAME, COMMON NAME, COMMENT. Lists evergreen trees like Picea glauca.

Table with 5 columns: SYM, SIZE, QTY, BOTANICAL NAME, COMMON NAME, COMMENT. Lists deciduous shrubs like Aronia arbutifolia, Aronia melanocarpa, etc.

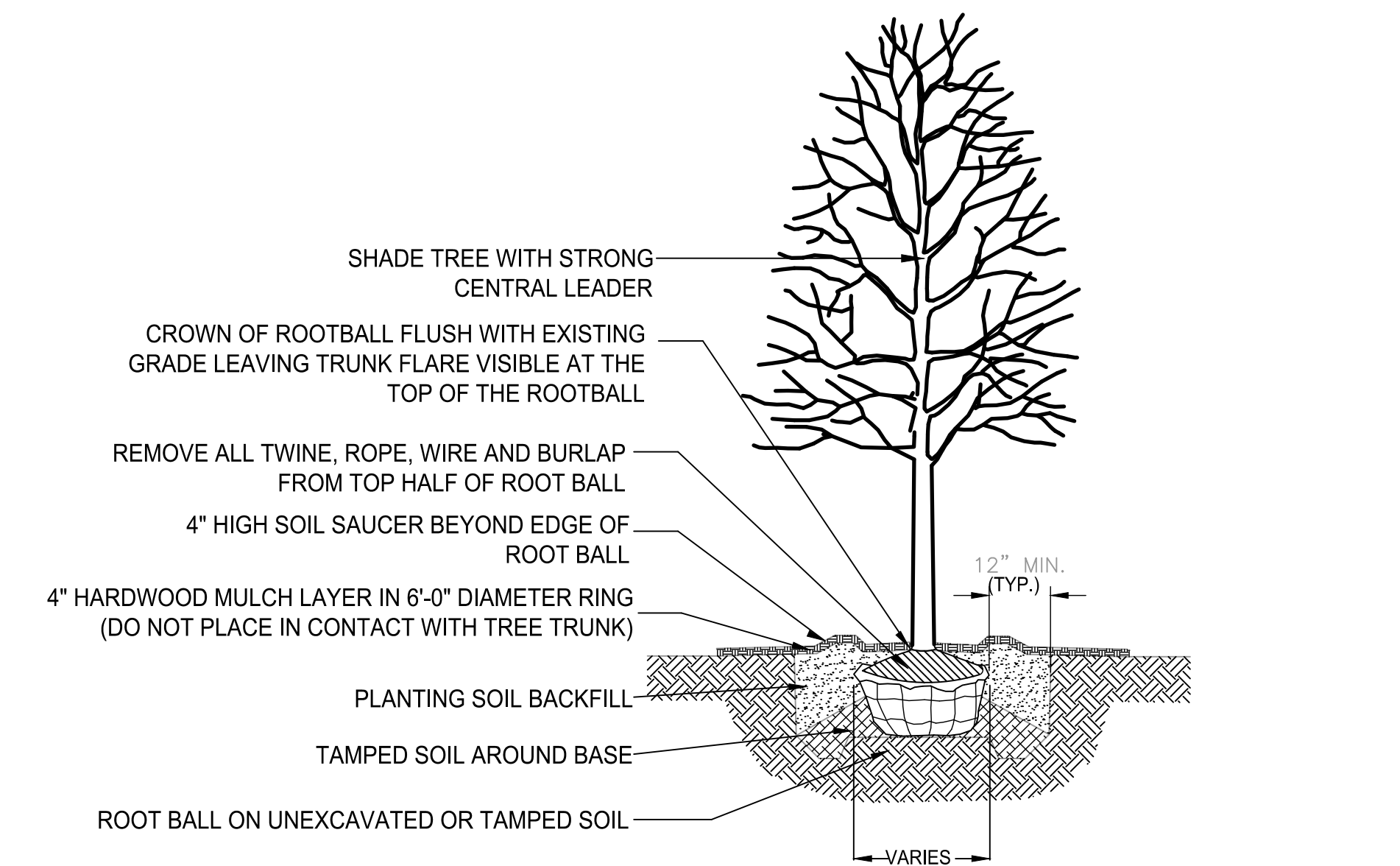
Table with 5 columns: SYM, SIZE, QTY, BOTANICAL NAME, COMMON NAME, COMMENT. Lists evergreen shrubs like Juniperus chinensis, Taxus x media.

Table with 5 columns: SYM, SIZE, QTY, BOTANICAL NAME, COMMON NAME, COMMENT. Lists ornamental grasses like Calamagrostis acutifolia.

Table with 5 columns: SYM, SIZE, QTY, BOTANICAL NAME, COMMON NAME, COMMENT. Lists groundcover/perennials like Achillea Millefolium, Allium 'summer beauty', etc.

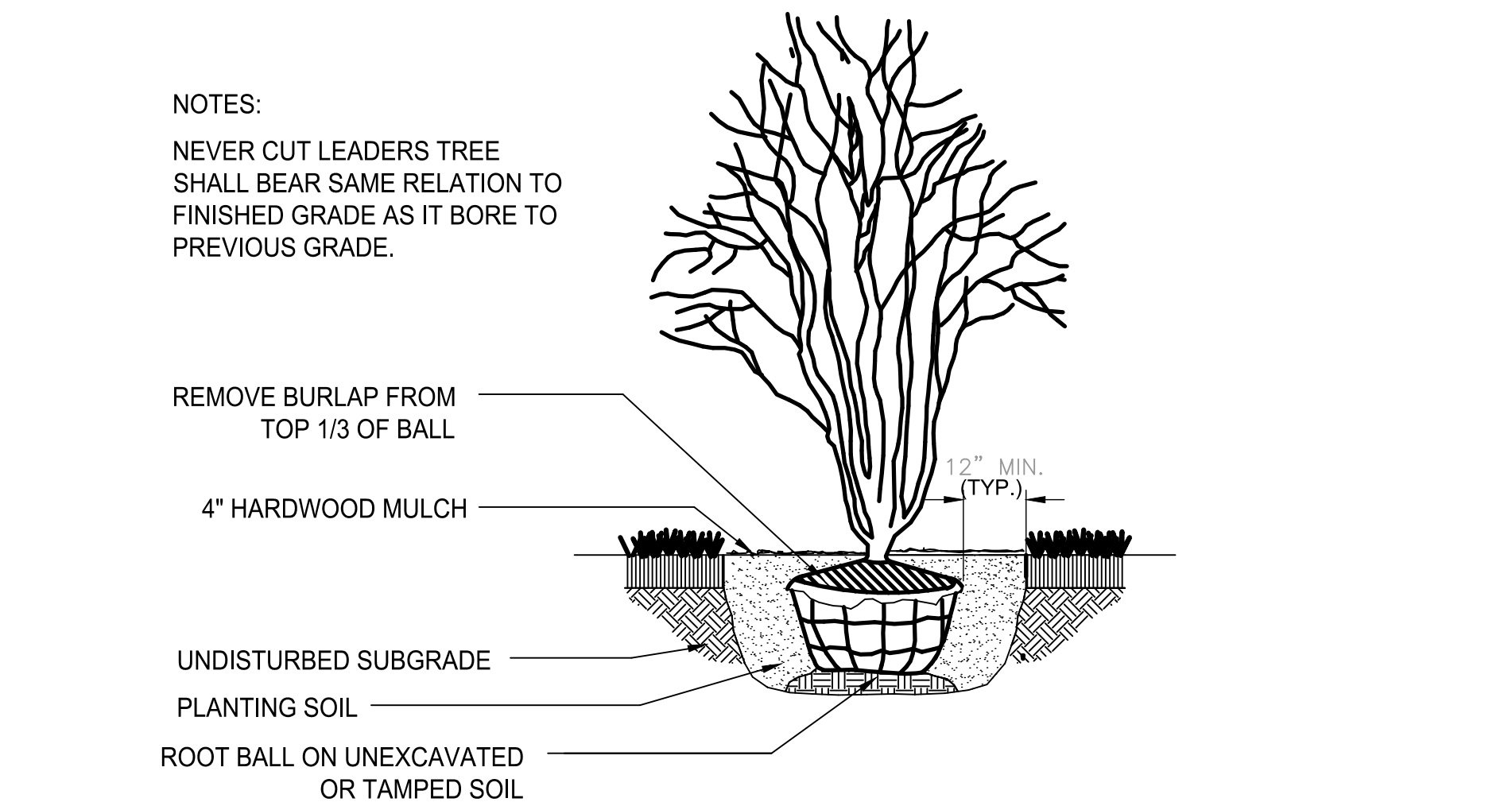
VILLAGE LANDSCAPE REQUIREMENT CALCULATIONS

Table with 4 columns: DESCRIPTION, REQUIREMENT, AREA / CALC., PROPOSED. Details site requirements for trees, shrubs, and parking areas.

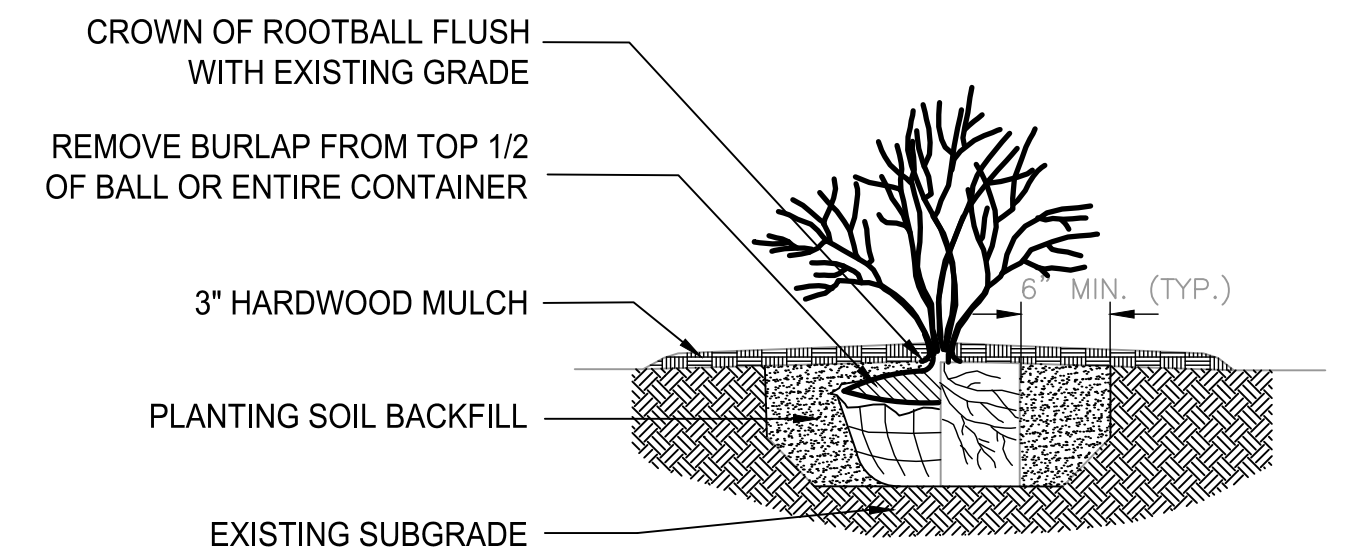


1 SHADE TREE PLANTING DETAIL NOT TO SCALE

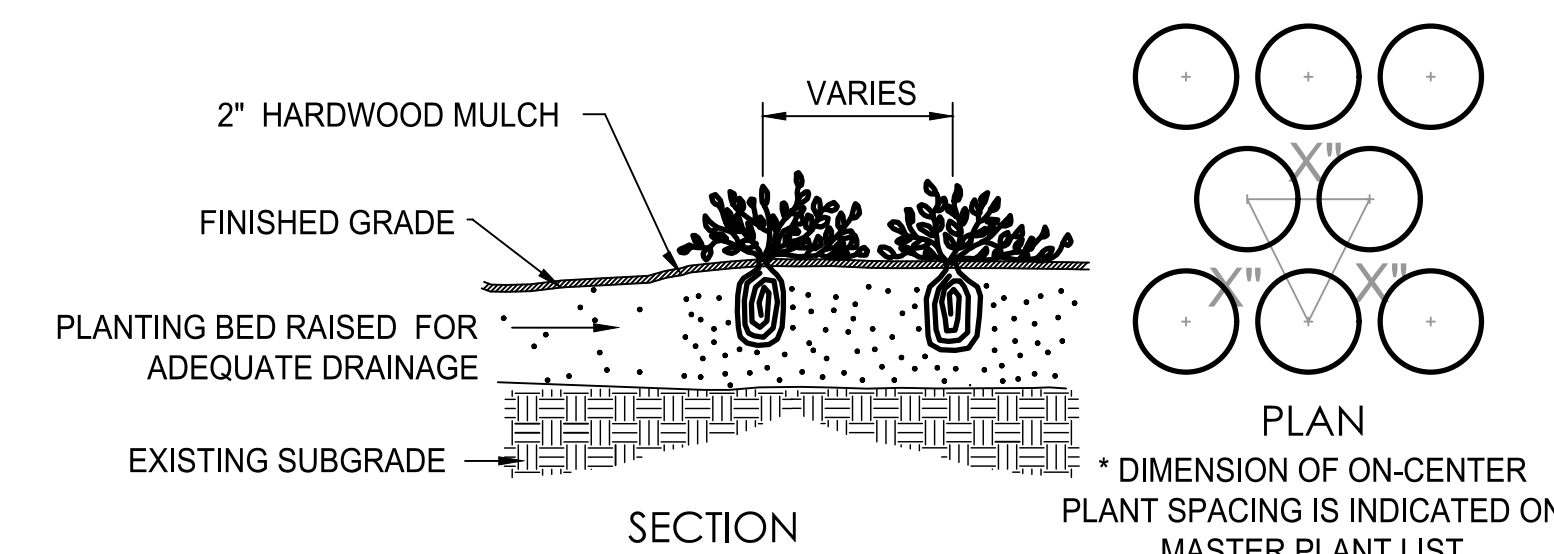
NOTES: NEVER CUT LEADERS TREE SHALL BEAR SAME RELATION TO FINISHED GRADE AS IT BORE TO PREVIOUS GRADE.



2 ORNAMENTAL TREE PLANTING DETAIL NOT TO SCALE



3 SHRUB PLANTING DETAIL NOT TO SCALE



4 PERENNIAL / ANNUAL PLANTING DETAIL NOT TO SCALE

LANDSCAPE NOTES

- 1. CONTRACTOR SHALL OBTAIN ALL NECESSARY LOCAL PERMITS AND PERMISSIONS TO INSTALL THE PROPOSED IMPROVEMENTS.
2. ALL LANDSCAPE MATERIALS SHALL BE INSTALLED IN ACCORDANCE WITH THE CITY OF AURORA LANDSCAPING CODES AND ZONING ORDINANCES.
...
14. TREES AND SHRUBS SHALL NOT BE LOCATED CLOSER THAN TEN (10) FEET TO FIRE HYDRANTS, TRANSFORMERS OR OTHER ABOVE GROUND UTILITIES.



CHRISTOPHER ENRIGHT ARCHITECTS
A PROFESSIONAL CORPORATION

628 E. Parent Avenue
Suite 100
Royal Oak, MI 48067
248.258.6485 (O)
248.330.9395 (C)
cenright@enrightarchitects.com

LG Landscape Architecture
Site Planning
Illustration
Workshop, LLC
1955 N. Wilmot Avenue
Chicago, IL 60647
ph. 773.697.4388
www.LGWLA.com

BELLE TIRE
AURORA, IL

XXXX BUTTERFIELD RD
AURORA, IL 60502

Landscape Implementation Plan
for
PAS Plaza Subdivision - Lot 2

LANDSCAPE DETAILS /
NOTES / CALCULATIONS

Issued for
2023.06.14 CITY / IDOT SUBMITTAL
2023.07.07 CITY RESUBMITTAL
2023.08.04 CITY RESUBMITTAL

Sheet Number
23-140

L.3