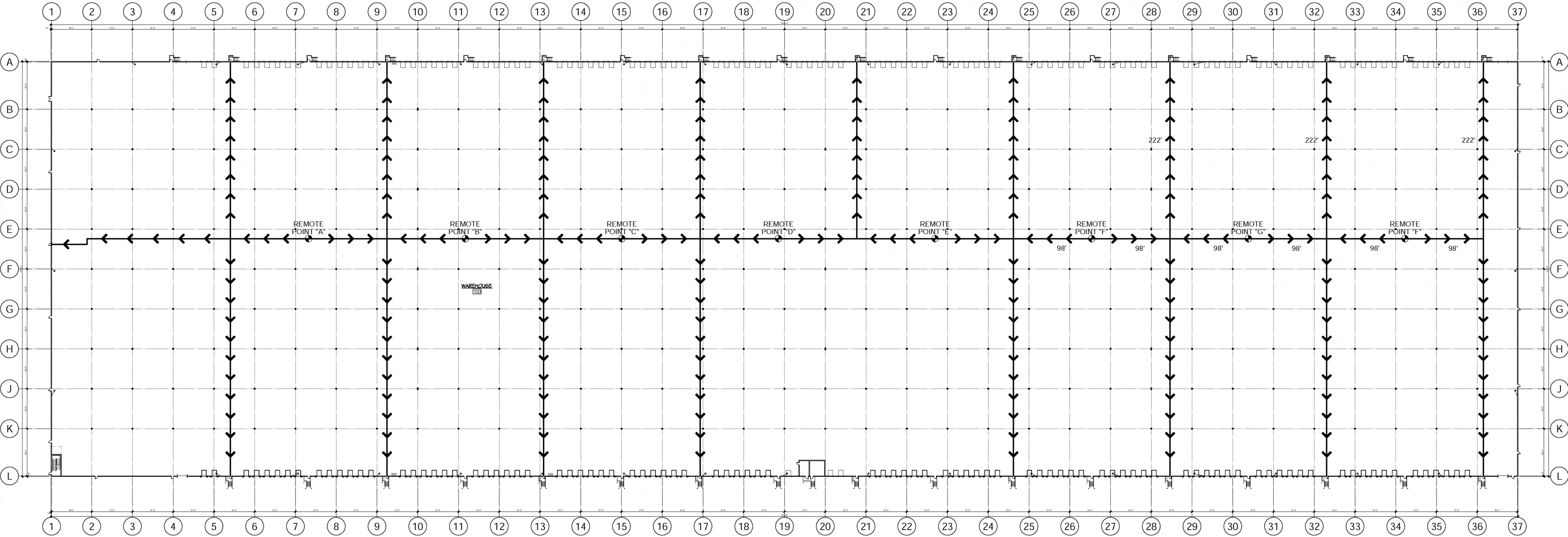


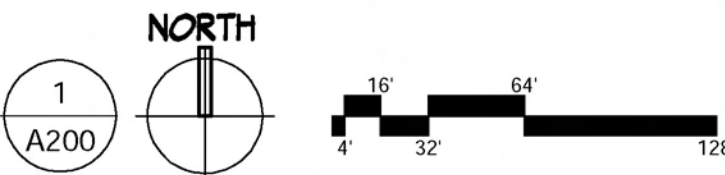
ELEVATIONS FOR UNIT 3 - LOT 5

SEE SHEET A302 FOR MATERIAL
LEGEND SCHEDULE AND A303 FOR
SIGNAGE AREAS AND DATA TABLES

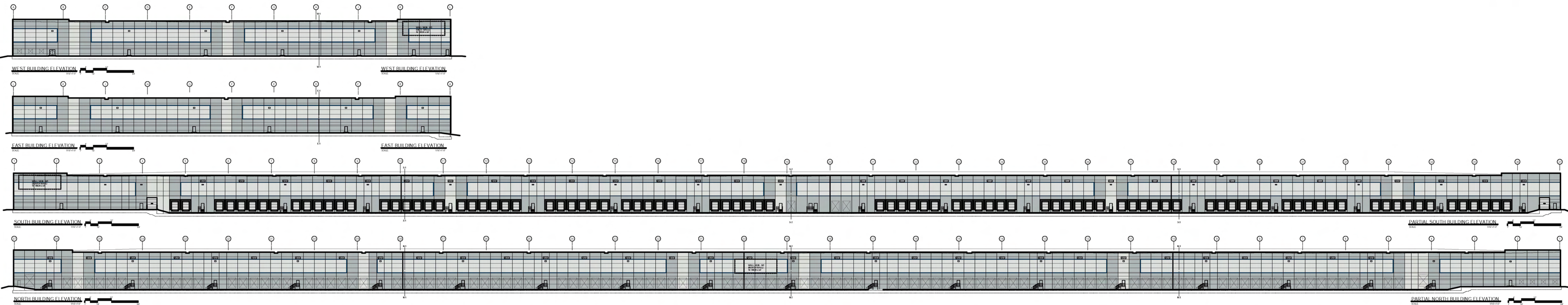


OVERALL BUILDING PLAN

SCALE: 1/64"= 1'-0"



NOTE:
ALL REMOTE LOCATION POINTS
ARE WITHIN 400' TO
ACCESSIBLE EGRESS OR
EXTERIOR AREA OF RESCUE
ASSISTANCE



OVERALL BUILDING ELEVATIONS

SCALE: 1/64"= 1'-0"

2
A200



1301 West 22nd Street
Suite #800
Oakbrook, IL 60523
847.232.5400 847.232.5691

ARCHITECT



HARRIS ARCHITECTS, INC.
4801 EMERSON AVENUE - SUITE 210
PALATINE, IL 60067
847.303.1155

LOT 5
BUTTERFIELD EAST - UNIT 3

FINAL PDD
DUKE PARKWAY
AURORA, ILLINOIS 60502

BUILDING ELEVATIONS

ISSUANCES

ISSUED FOR FINAL PDD	02-24-2016
FINAL PDD REVISIONS	03-07-2016
FINAL PDD REVISIONS	03-24-2016
FINAL PDD - RESUBMIT	08-19-2016

#	Description	Date
---	-------------	------

DRAWING INFORMATION

Scale: AS NOTED
Date: AS NOTED
Checked By: ***
Drawn By: KSK
Duke Realty Job #: DUKEAH-441
A/E Job #: 216027

DRAWING / SHEET TITLE

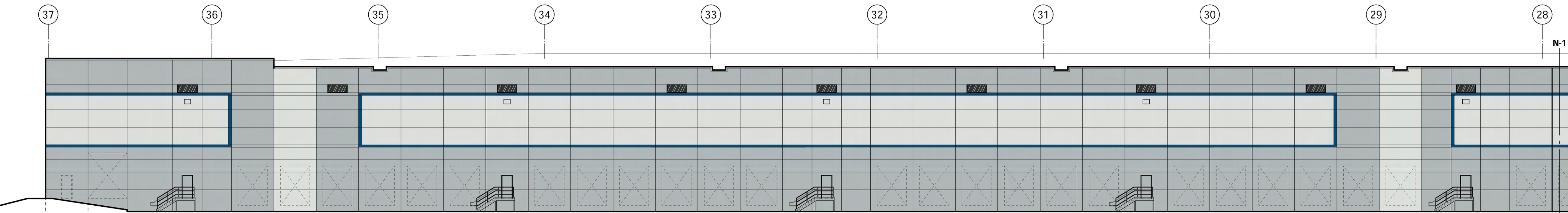
OVERALL BUILDING
EXIT PLAN & ELEVATIONS

SHEET NUMBER

A200

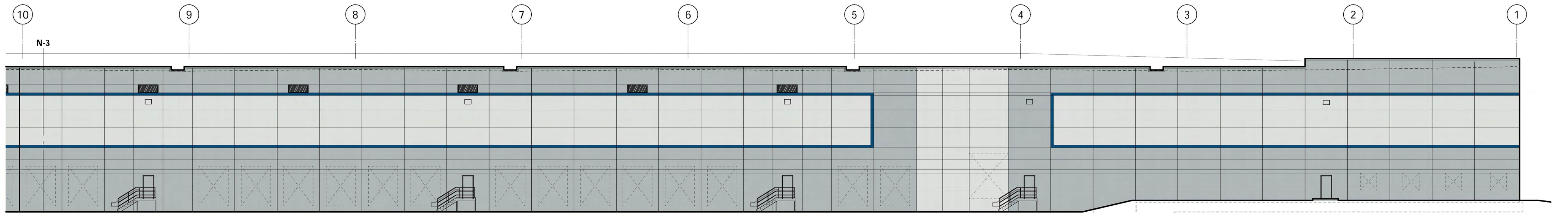
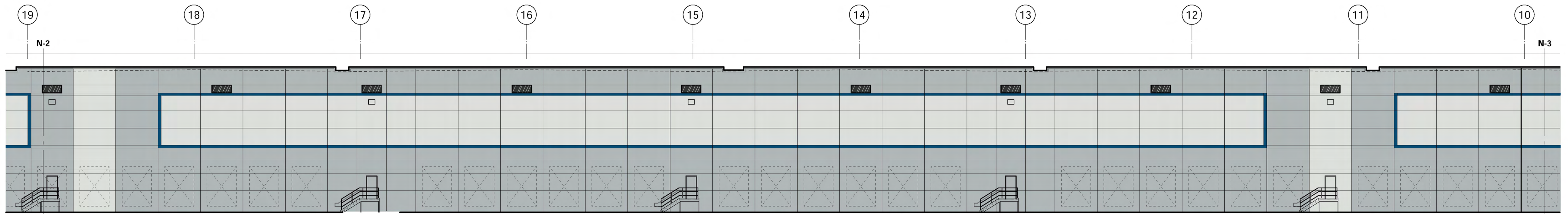
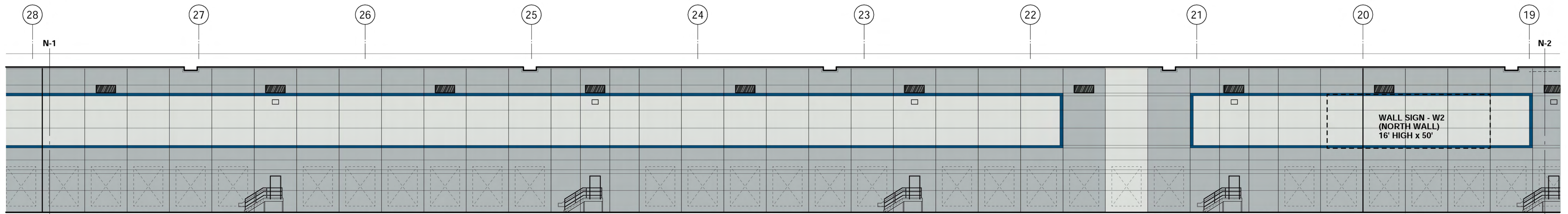
ELEVATIONS FOR UNIT 3 - LOT 5

SEE SHEET A302 FOR MATERIAL
LEGEND SCHEDULE AND A303 FOR
SIGNAGE AREAS AND DATA TABLES



NORTH BUILDING ELEVATION

SCALE: 1/16"=1'-0" 1' 4' 16' 32' 64'



PARTIAL NORTH BUILDING ELEVATION

SCALE: 1/16"=1'-0" 1' 4' 16' 32' 64'



1301 West 22nd Street
Suite #800
Oakbrook, IL 60523
847.232.5400 847.232.5691

ARCHITECT



HARRIS ARCHITECTS, INC.
4801 EMERSON AVENUE - SUITE 210
PALATINE, IL 60067
847.303.1155

LOT 5
BUTTERFIELD EAST - UNIT 3

FINAL PDD

DUKE PARKWAY
AURORA, ILLINOIS 60502

BUILDING ELEVATIONS

ISSUANCES

ISSUED FOR FINAL PDD	02-24-2016
FINAL PDD REVISIONS	03-07-2016
FINAL PDD REVISIONS	03-24-2016
FINAL PDD - RESUBMIT	08-19-2016

#	Description	Date
---	-------------	------

DRAWING INFORMATION

Scale:	AS NOTED
Date:	AS NOTED
Checked By:	***
Drawn By:	KSK
Duke Realty Job #:	DUKEAH-441
A/E Job #:	216027

DRAWING / SHEET TITLE

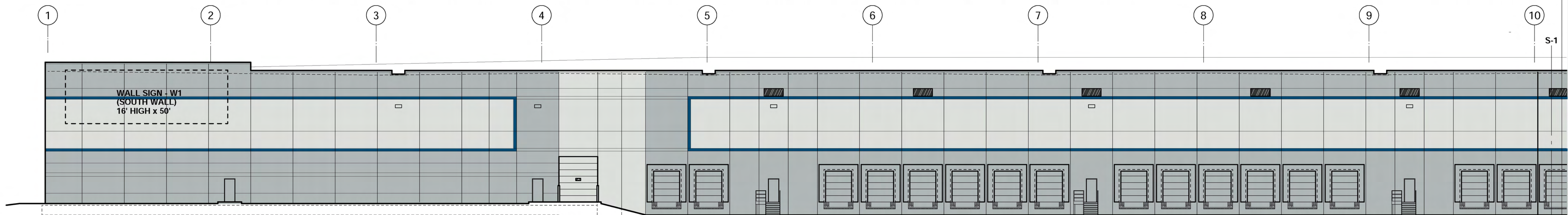
BUILDING ELEVATIONS
NORTH ELEVATION

SHEET NUMBER

A300

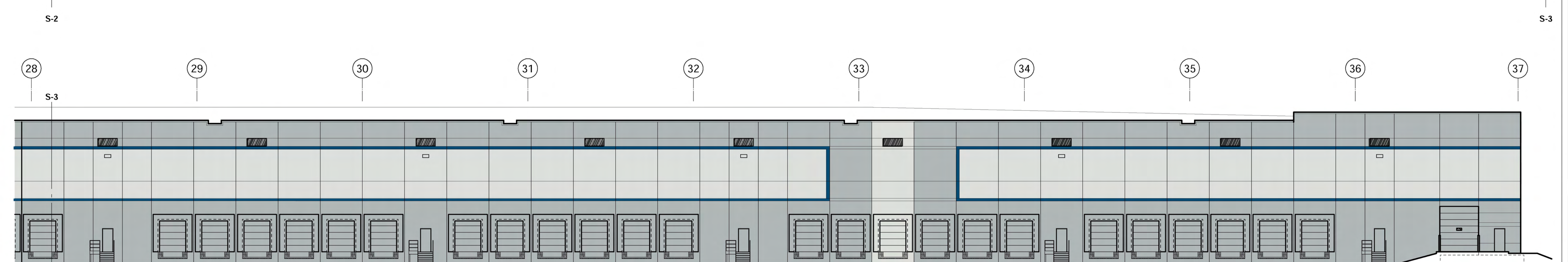
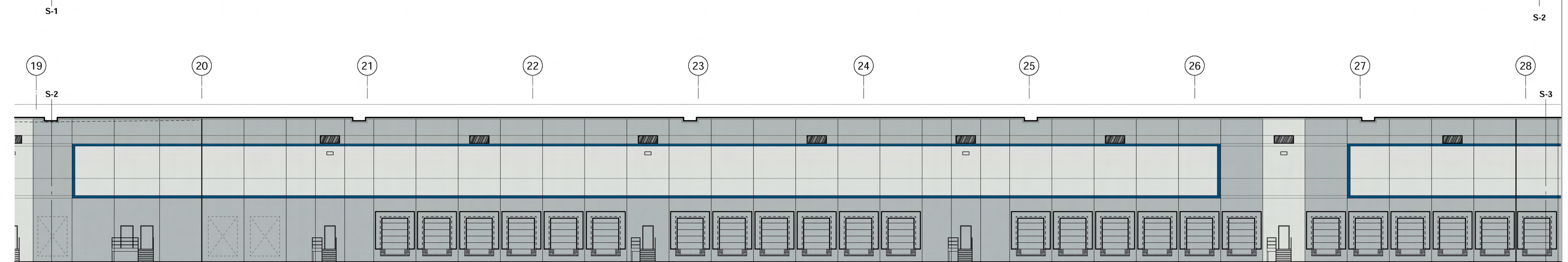
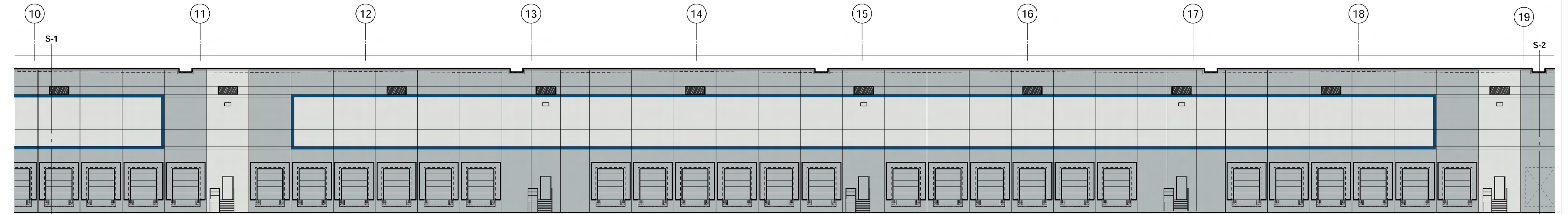
ELEVATIONS FOR UNIT 3 - LOT 5

SEE SHEET A302 FOR MATERIAL
LEGEND SCHEDULE AND A303 FOR
SIGNAGE AREAS AND DATA TABLES



SOUTH BUILDING ELEVATION

SCALE: 1/16"=1'-0" 1' 4' 16' 32' 64'



PARTIAL SOUTH BUILDING ELEVATION

SCALE: 1/16"=1'-0" 1' 4' 16' 32' 64'



1301 West 22nd Street
Suite #800
Oakbrook, IL 60523
847.232.5400 847.232.5691

ARCHITECT

HARRIS ARCHITECTS, INC.
WWW.HARRISARCHITECTS.COM 847.303.1155

HARRIS ARCHITECTS, INC.
4801 EMERSON AVENUE - SUITE 210
PALATINE, IL 60067
847.303.1155

**LOT 5
BUTTERFIELD EAST - UNIT 3**

FINAL PDD

DUKE PARKWAY
AURORA, ILLINOIS 60502

BUILDING ELEVATIONS

ISSUANCES

ISSUED FOR FINAL PDD	02-24-2016
FINAL PDD REVISIONS	03-07-2016
FINAL PDD REVISIONS	03-24-2016
FINAL PDD - RESUBMIT	08-19-2016

#	Description	Date
---	-------------	------

DRAWING INFORMATION

Scale:	AS NOTED
Date:	AS NOTED
Checked By:	***
Drawn By:	KSK
Duke Realty Job #:	DUKEAH-441
A/E Job #:	216027

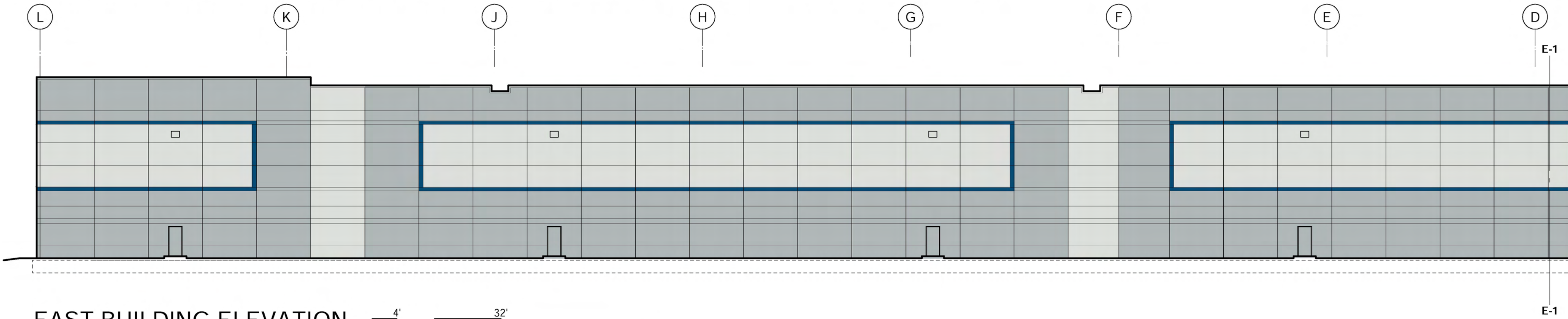
DRAWING / SHEET TITLE

**BUILDING ELEVATIONS
SOUTH**

SHEET NUMBER

A301

ELEVATIONS FOR UNIT 3 - LOT 5

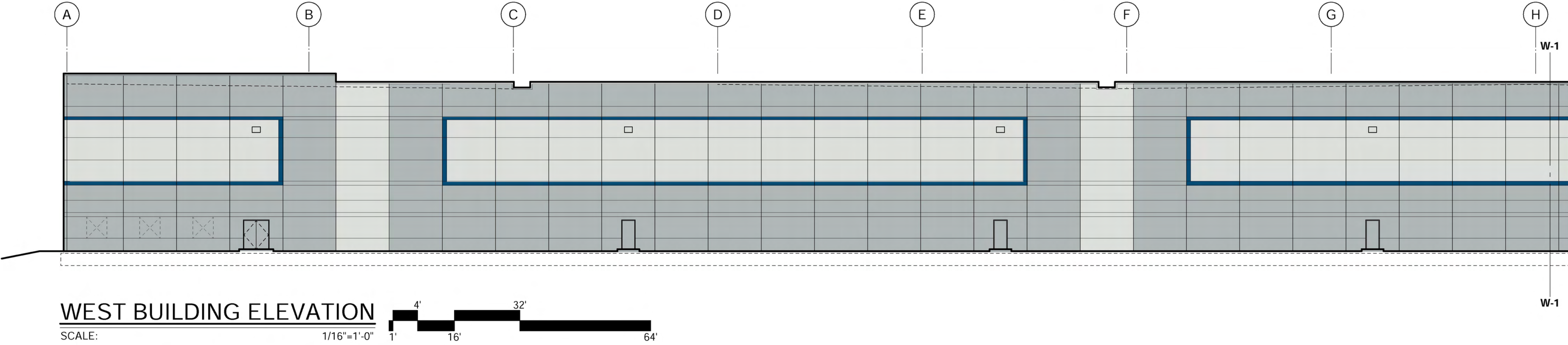
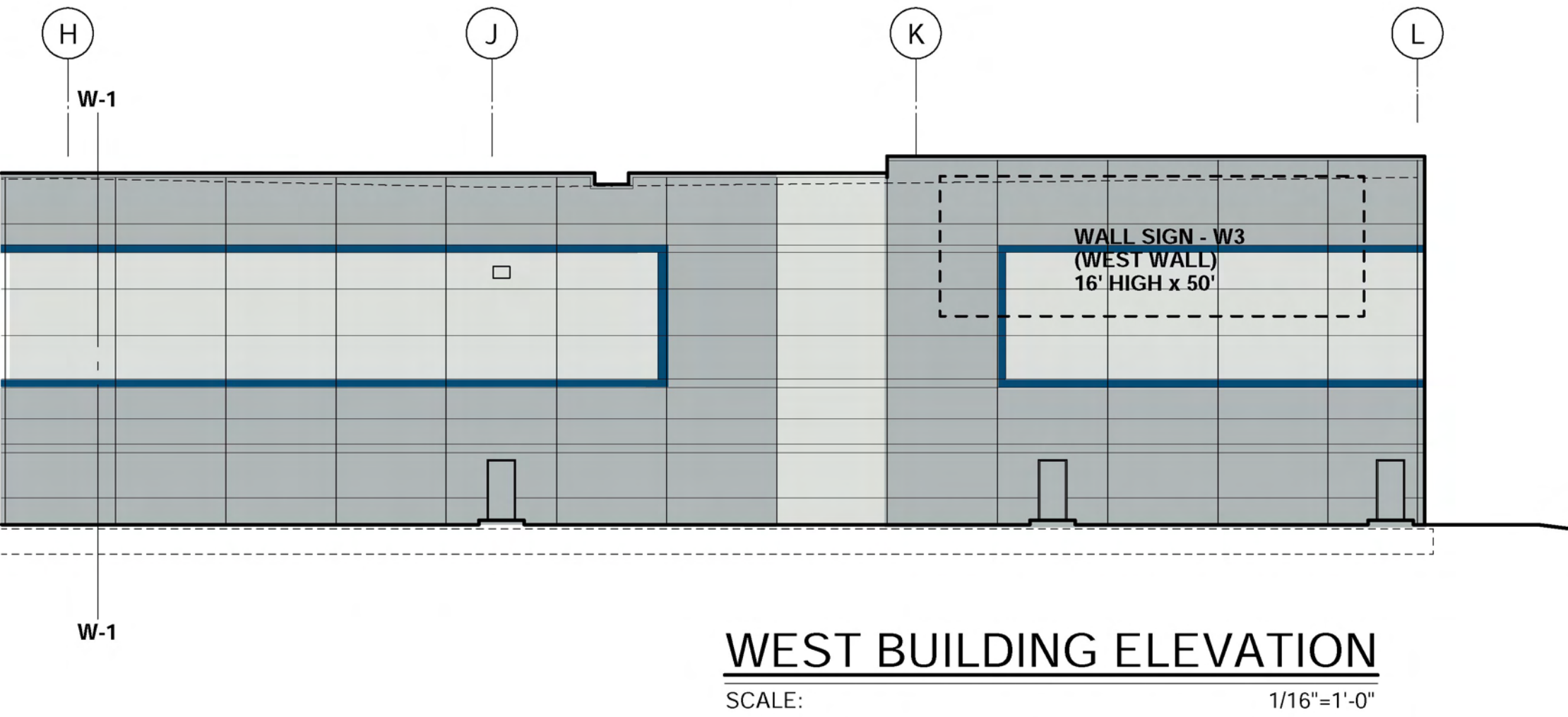
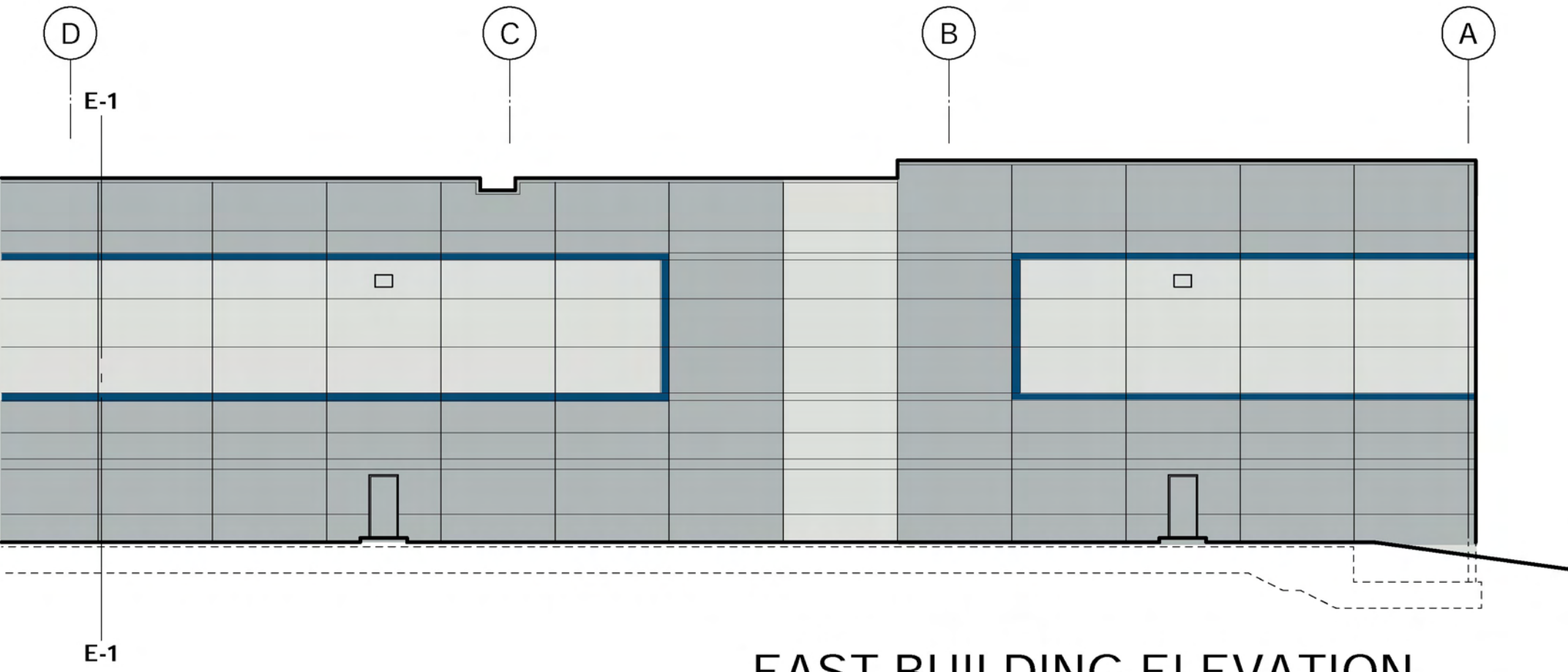


MATERIAL LEGEND

- A** SMOOTH FINISHED PRECAST CONCRETE PANEL - PAINTED
- SW 7070 SITE WHITE
 - SW 7072 ONLINE
 - SW 6804 DIGNITY BLUE
- B** 1" INSULATED TINTED GRAY GLASS - ALUM. FRAMES
- C** STEEL TUBE ACCENT CANOPY -PAINTED
- D** PREFINISHED METAL CANOPY SYSTEM - TO MATCH SW 6804
- E** PREFINSIHED METAL COPING - TO MATCH SW 6804
- F** PREFINSIHED METAL OVERHEAD DOOR - WHITE
- G** METAL STAIR AND BOLLARDS - PAINTED - TO MATCH SW 7075

SIGNS

SEE SIGNAGE DATA TABLES ON SHEET A303 FOR SIGNAGE LOCATIONS AND SIZES.



Duke
REALTY

1301 West 22nd Street
Suite #800
Oakbrook, IL 60523
847.232.5400 847.232.5691

ARCHITECT

HARRIS ARCHITECTS, INC.
WWW.HARRISARCHITECTS.COM 847.303.1155

HARRIS ARCHITECTS, INC.
4801 EMERSON AVENUE - SUITE 210
PALATINE, IL 60067
847.303.1155

LOT 5
BUTTERFIELD EAST - UNIT 3

FINAL PDD

DUKE PARKWAY
AURORA, ILLINOIS 60502

BUILDING ELEVATIONS

ISSUANCES

ISSUED FOR FINAL PDD	02-24-2016
FINAL PDD REVISIONS	03-07-2016
FINAL PDD REVISIONS	03-24-2016
FINAL PDD - RESUBMIT	08-19-2016

#	Description	Date
---	-------------	------

DRAWING INFORMATION

Scale: AS NOTED
Date: AS NOTED
Checked By: ***
Drawn By: KSK
Duke Realty Job #: DUKEAH-441
A/E Job #: 216027

DRAWING / SHEET TITLE

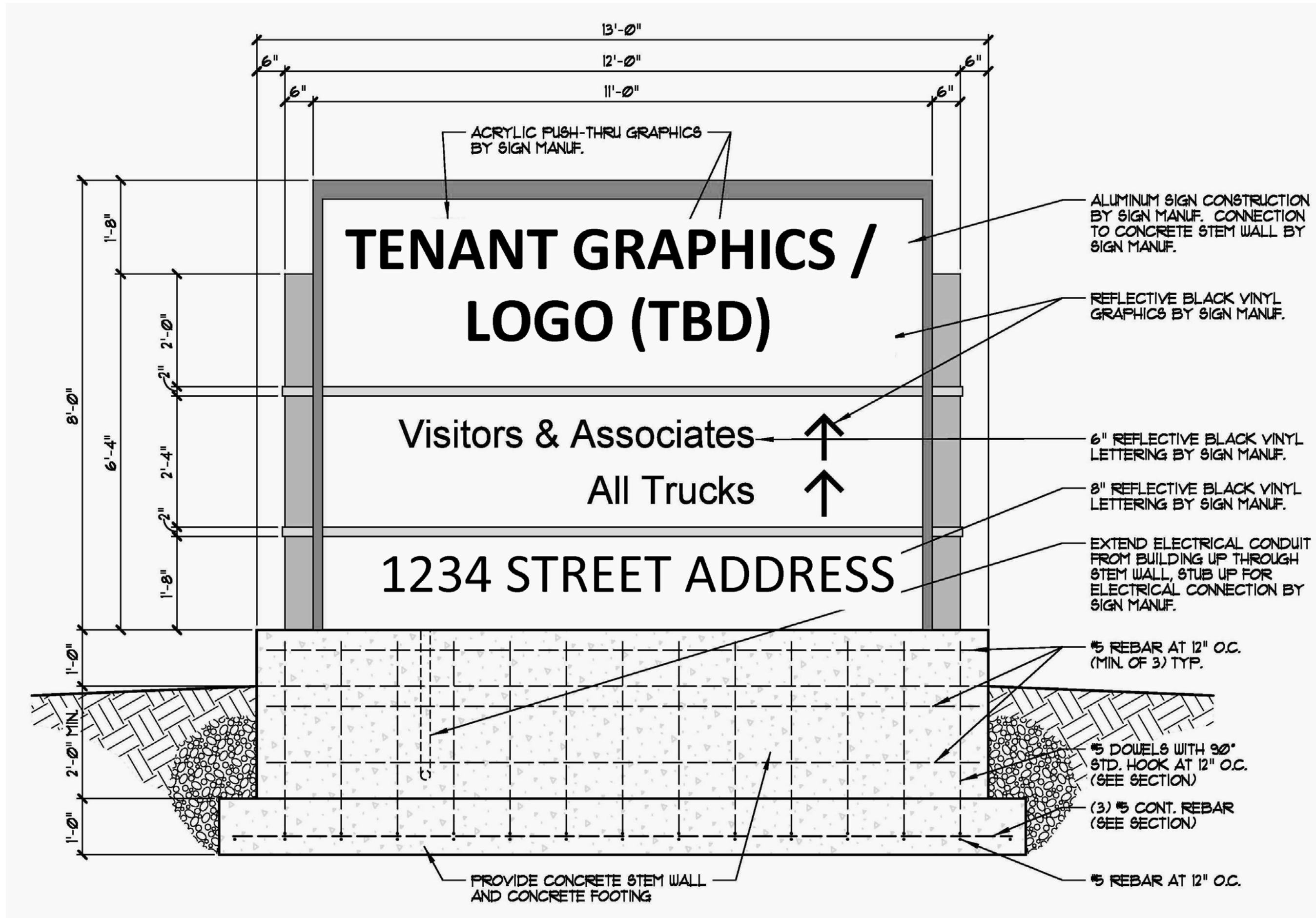
BUILDING ELEVATIONS
EAST & WEST

SHEET NUMBER

A302

WALL SIGN NOTE:
ALL WALL MOUNTED BUILDING SIGNS SHOWN ARE SUGGESTED
AREA ALLOCATIONS ONLY. FINAL BUILDING & TENANT SIGNS SHALL BE ALLOWED
THE AREA ALLOCATIONS TO THE MAXIMUM ALLOWED BY CITY OF AURORA
ZONING ORDINANCE. ALL FINAL WALL SIGNS SHALL BE SUBMITTED PER AURORA
REQUIREMENTS.

SIGN DATA TABLES AND ELEVATIONS



MONUMENT SIGN - ELEVATION

SCALE: NTS

REFER TO CIVIL PLANS FOR LOCATIONS OF MONUMENT SIGNS

2
A303

ELEVATION DATA TABLE: ELEVATIONS		
DESCRIPTION:	VALUE:	UNIT:
A) BUILDING HEIGHT	41'-6" (45'-6" AT RAISED PANELS)	FEET
B) GRADE ELEVATION	TBD	FEET
C) BUILDING SQUARE FOOTAGE BY FLOOR		
FIRST FLOOR (SINGLE STORY)	954,720 S.F.	SQUARE FEET
D) BUILDING SQUARE FOOTAGE	954,720 S.F.	SQUARE FEET
E) EXTERIOR MATERIAL LIST	SEE BUILDING ELEVATIONS WITH MATERIAL LEGEND	-

SIGNAGE DATA TABLE: GROUND SIGN			
GROUND SIGN #1	DESCRIPTION:	VALUE:	UNIT:
G1	LENGTH OF STREET FRONTAGE - SIGN LOCATION	520' (BUILDING)	FEET
	WIDTH OF SIGN FACE	12'-0"	FEET
	HEIGHT OF SIGN FACE	8'-0"	FEET
	SQUARE FOOTAGE OF SIGN FACE	+/- 96 SF	SF
	HEIGHT OF SIGN - OVERALL	9'-0"	FEET
	WIDTH OF SIGN - OVERALL	13'-0"	FEET
	TYPE OF SIGN	ALUM CABINET	
	TYPE OF SIGN BASE	CAST-IN-PLACE CONC.	
	IS THERE A DIGITAL DISPLAY	NO	

SIGNAGE DATA TABLE: WALL SIGNAGE			
WALL SIGN #1 - SOUTH WALL	DESCRIPTION:	VALUE:	UNIT:
W1	WIDTH OF FACADE - ON WHICH SIGN IS LOCATED	1,836'-0"	FEET
	HEIGHT OF FACADE - ON WHICH SIGN IS LOCATED	41'-6" AFF	FEET
	SQUARE FOOTAGE OF FACADE ON WHICH SIGN IS LOCATED	76,194 SF	SQUARE FEET
	WIDTH OF SIGN FACE	50'-0"	FEET
	HEIGHT OF SIGN FACE	16'-0"	FEET
	SQUARE FOOTAGE OF SIGN FACE	800 SF	SQUARE FEET
	PERCENT OF SIGN COVERAGE - FACADE ON WHICH SIGN IS LOCATED	1%	PERCENT (%)

SIGNAGE DATA TABLE: WALL SIGNAGE			
WALL SIGN #2 NORTH WALL	DESCRIPTION:	VALUE:	UNIT:
W2	WIDTH OF FACADE - ON WHICH SIGN IS LOCATED	1,836'-0"	FEET
	HEIGHT OF FACADE - ON WHICH SIGN IS LOCATED	41'-6" AFF	FEET
	SQUARE FOOTAGE OF FACADE ON WHICH SIGN IS LOCATED	76,194 SF	SQUARE FEET
	WIDTH OF SIGN FACE	50'-0"	FEET
	HEIGHT OF SIGN FACE	16'-0"	FEET
	SQUARE FOOTAGE OF SIGN FACE	800 SF	SQUARE FEET
	PERCENT OF SIGN COVERAGE - FACADE ON WHICH SIGN IS LOCATED	1%	PERCENT (%)

SIGNAGE DATA TABLE: WALL SIGNAGE			
WALL SIGN #3 WEST WALL	DESCRIPTION:	VALUE:	UNIT:
W3	WIDTH OF FACADE - ON WHICH SIGN IS LOCATED	520'-0"	FEET
	HEIGHT OF FACADE - ON WHICH SIGN IS LOCATED	41'-6" AFF	FEET
	SQUARE FOOTAGE OF FACADE ON WHICH SIGN IS LOCATED	21,580 SF	SQUARE FEET
	WIDTH OF SIGN FACE	50'-0"	FEET
	HEIGHT OF SIGN FACE	16'-0"	FEET
	SQUARE FOOTAGE OF SIGN FACE	800 SF	SQUARE FEET
	PERCENT OF SIGN COVERAGE - FACADE ON WHICH SIGN IS LOCATED	4%	PERCENT (%)

Duke
REALTY

1301 West 22nd Street
Suite #800
Oakbrook, IL 60523
847.232.5400 847.232.5691

ARCHITECT

HARRIS ARCHITECTS, INC.
WWW.HARRISARCHITECTS.COM 847.303.1155

HARRIS ARCHITECTS, INC.
4801 EMERSON AVENUE - SUITE 210
PALATINE, IL 60067
847.303.1155

LOT 5
BUTTERFIELD EAST - UNIT 3
FINAL PDD
DUKE PARKWAY
AURORA, ILLINOIS 60502
SIGNAGE DETAILS & DATA

ISSUANCES

ISSUED FOR FINAL PDD	02-24-2016
FINAL PDD REVISIONS	03-07-2016
FINAL PDD REVISIONS	03-24-2016
FINAL PDD - RESUBMIT	08-19-2016

#	Description	Date
---	-------------	------

DRAWING INFORMATION

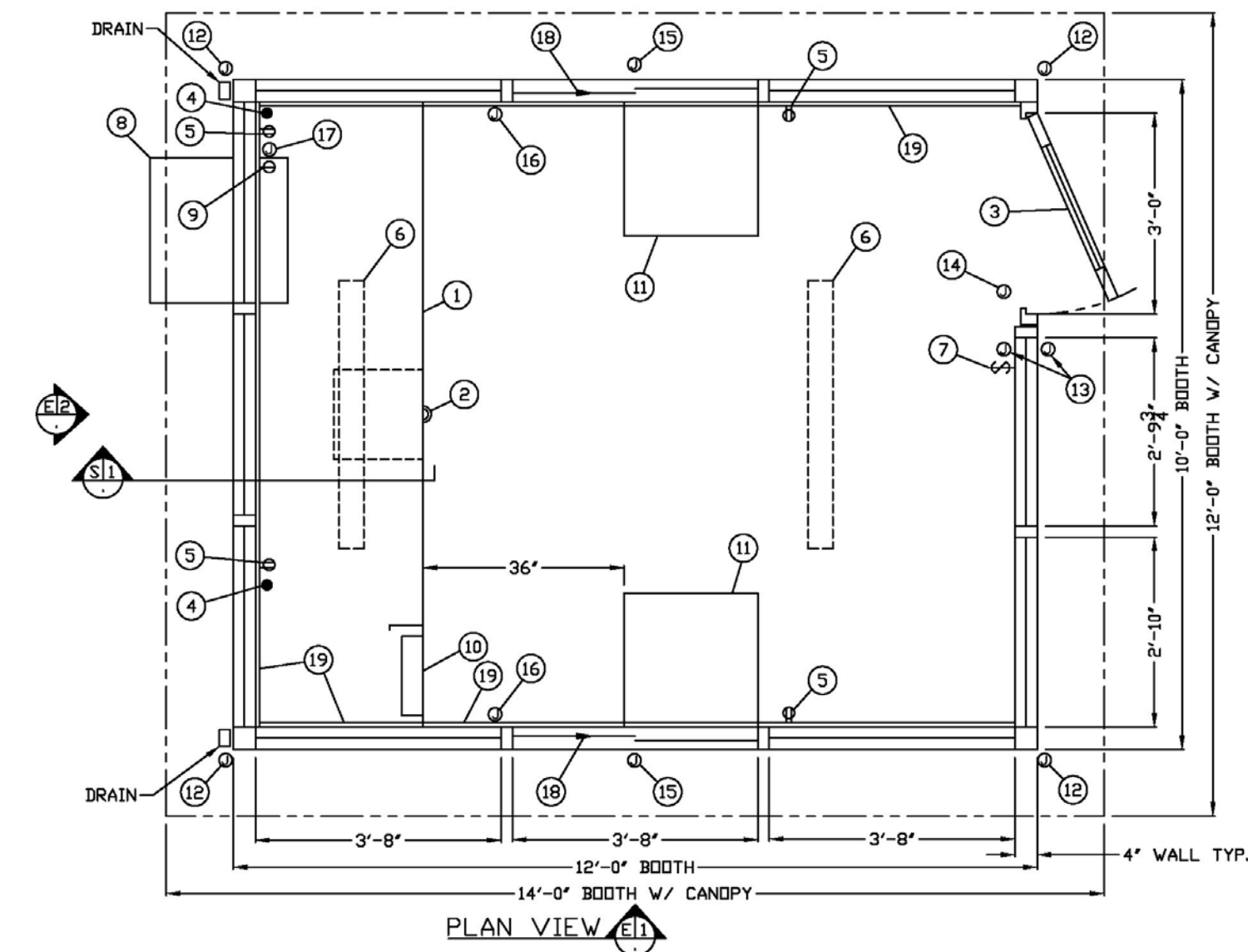
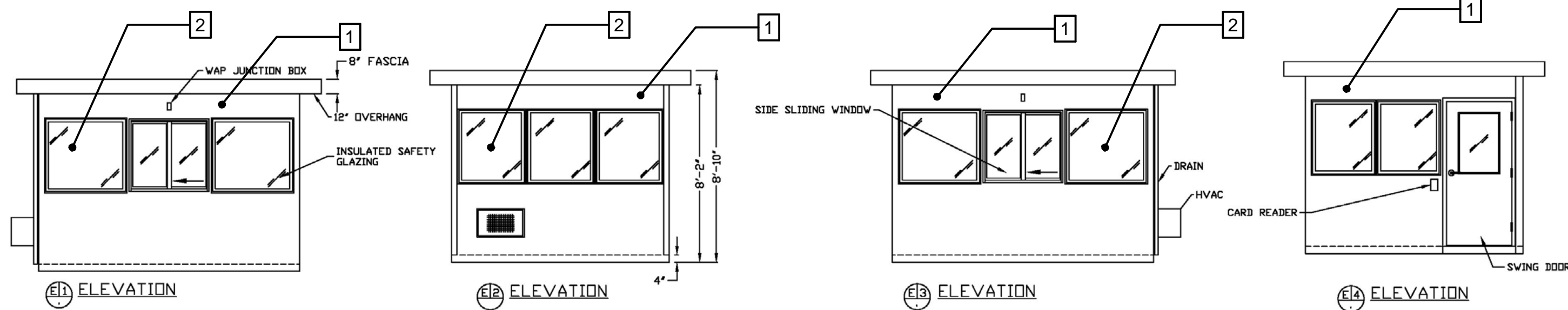
Scale: AS NOTED
Date: AS NOTED
Checked By: ***
Drawn By: KSK
Duke Realty Job #: DUKEAH-441
A/E Job #: 216027

DRAWING / SHEET TITLE

**MONUMENT SIGN &
WALL SIGNS - DATA**

SHEET NUMBER

A303



- COUNTER - 30" DEEP PAINTED GALVANIZED STEEL, SET 30" AFF.
 - PAINTED STORAGE DRAWER
 - DOOR - SWINGING STEEL WITH WEATHER-STRIPPING, IVES POWER TRANSFER #58BIHV-TW-US26D HINGES, INSULATED SAFETY GLAZING, SCHLAGE ELECTRIC LEVER HANDLE LOCKSET #L5092EV, LCN #4116 CUSH HYDRAULIC CLOSER, AND HARDWARE.
 - 2" DIAMETER HOLE IN COUNTER FOR DRIP CORDS, 2 REQ'D
 - GFCI OUTLET MOUNTED BELOW COUNTER, 4 REQ'D
 - INTERIOR LIGHT - LITHONIA FMLVL48-840, 40W LIGHT FIXTURE WITH ACRYLIC LENS, 2 REQ'D
 - WALL SWITCH FOR INTERIOR LIGHTS
 - HVAC UNIT - COMBO HEAT/COOL 240V/11,600 BTU THROUGH WALL MOUNTED WITH REMOTE THERMOSTAT CONTROL
 - SINGLE RECEPTACLE FOR HVAC UNIT
 - CIRCUIT BREAKER PANEL - SQUARE-D #QO12M100, 120/240V, 12 SPACE, 18-3 WIRE WITH GROUND BAR AND 100 AMP MAIN BREAKER INCLUDED
 - COUNTER 24" X 24" PAINTED STEEL, MOUNTED AT SILL, 2 REQ'D
 - 2X4 JUNCTION BOX FOR CUSTOMER SUPPLIED CAMERA WITH 3/4" RACEWAY TO ITEM #17, 4 REQ'D
 - 2X4 JUNCTION BOX FOR CUSTOMER SUPPLIED CARD READERS WITH 3/4" RACEWAY TO JUNCTION BOX ITEM #14, 2 REQ'D
 - 4X4 JUNCTION BOX WITH 3/4" RACEWAY TO ITEM #17
 - 2X4 JUNCTION BOX FOR CUSTOMER SUPPLIED WAP WITH 3/4" RACEWAY TO ITEM #17, 2 REQ'D
 - 2X4 JUNCTION BOX FOR CUSTOMER SUPPLIED WINDOW CONTACT WITH 3/4" RACEWAY TO ITEM #17, 2 REQ'D
 - 8" X 8" X 6" DEEP JUNCTION BOX MOUNTED NEAR FLOOR SLOT
 - SIDE SLIDING WINDOW WITH SCREEN, 2 REQ'D
 - PAINTED 3/4" ADVANTECH 30" TALL ON THREE WALLS
- NOTE: PAR-KUT BOOTHS ARE OF SINGLE UNIT WELDED STEEL CONSTRUCTION, FACTORY ASSEMBLED AND DELIVERED SET UP. FAILURE TO SECURELY ANCHOR BOOTH MAY RESULT IN OVERTURNING OF UNIT AND SERIOUS INJURY TO OCCUPANT.

- A. GLAZING - CLEAR INSULATED, TEMPERED SAFETY GLAZING SET IN ANODIZED ALUMINUM WINDOW FRAMES.
- B. PAINT - FINISH SHALL BE SINGLE COLOR OF CHOICE, IMRON POLYURETHANE HIGH GLOSS INDUSTRIAL COATING SHALL BE APPLIED TO ALL EXPOSED METAL SURFACES. THIS EXCLUDES FLOOR, ROOF SURFACE, ANODIZED ALUMINUM WINDOW FRAMES AND ANY STAINLESS STEEL COMPONENTS IF USED.
- C. ELECTRICAL - ALL WIRING BY PAR-KUT TO BE #12(MIN) STRANDED COPPER, THIN ENCLOSED IN #6(MIN) EMT, PER NATIONAL ELECTRIC CODE. ALL ELECTRICAL EQUIPMENT WILL BE LISTED BY U.L. OR EQUIVALENT RECOGNIZED NATIONAL TESTING LABORATORY. ALL WIRING TO TERMINATE AT C.B. PANEL. ALL CIRCUITS HAVE GREEN GROUND WIRE.
- D. BOOTH WILL HAVE A 3" CANOPY OVERHANG ON ALL SIDES.
- E. LIFTING RINGS ARE PROVIDED ON ROOF.
- F. NO ON SITE WORK BY PAR-KUT.

CONCEPTUAL GUARD SHACK PLAN

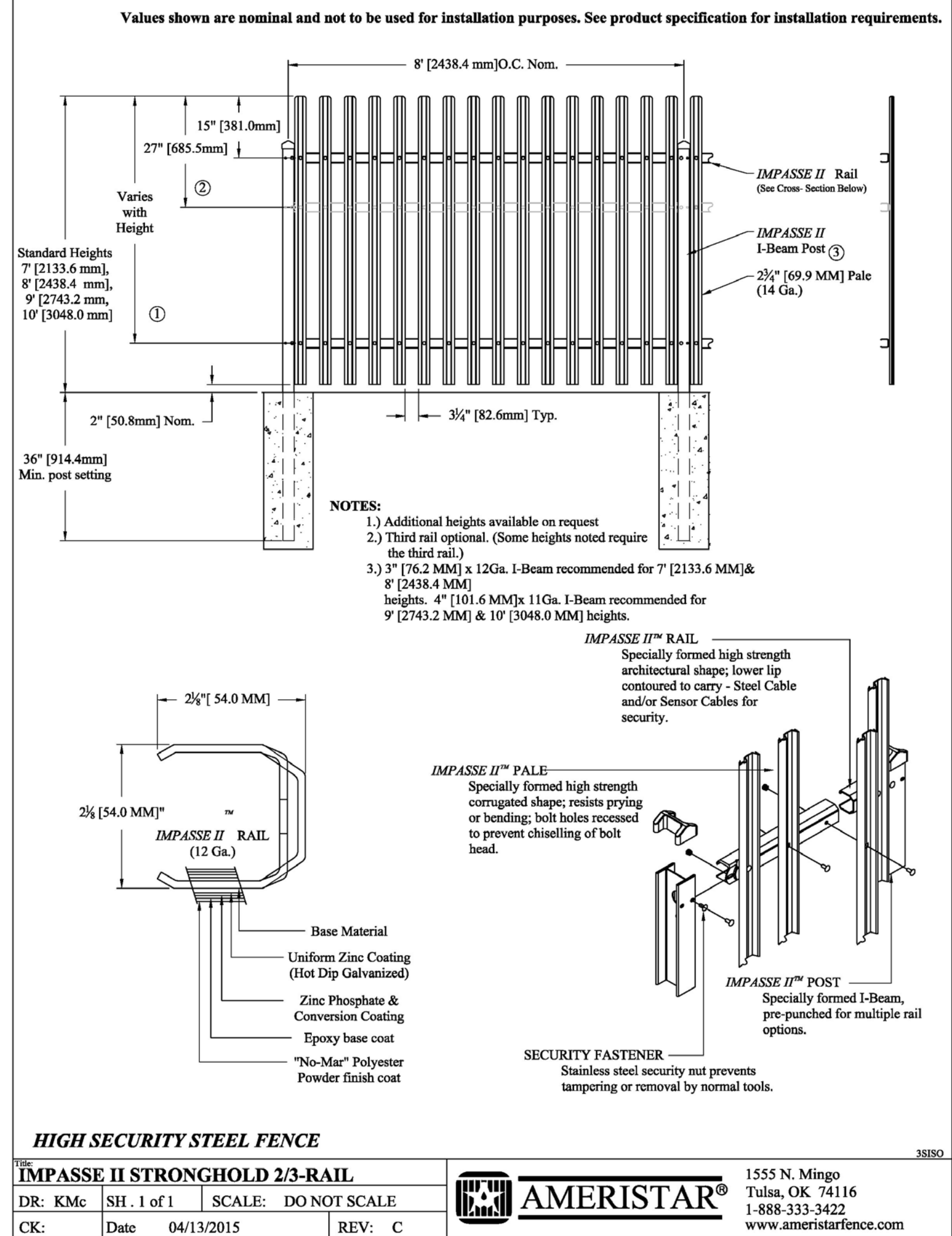
SCALE: NTS

GUARD SHACK MATERIALS

- 1 PREFINISHED METAL PANEL - LIGHT GRAY
- 2 1" INSULATED TINTED GRAY GLASS - ALUM. FRAMES

NOTE:
GUARD SHACK SIZE, HEIGHT, AND LOCATION SUBJECT TO CHANGE PENDING FINAL TENANT CONFIGURATION. SEE CIVIL PLANS FOR CURRENT LOCATIONS.

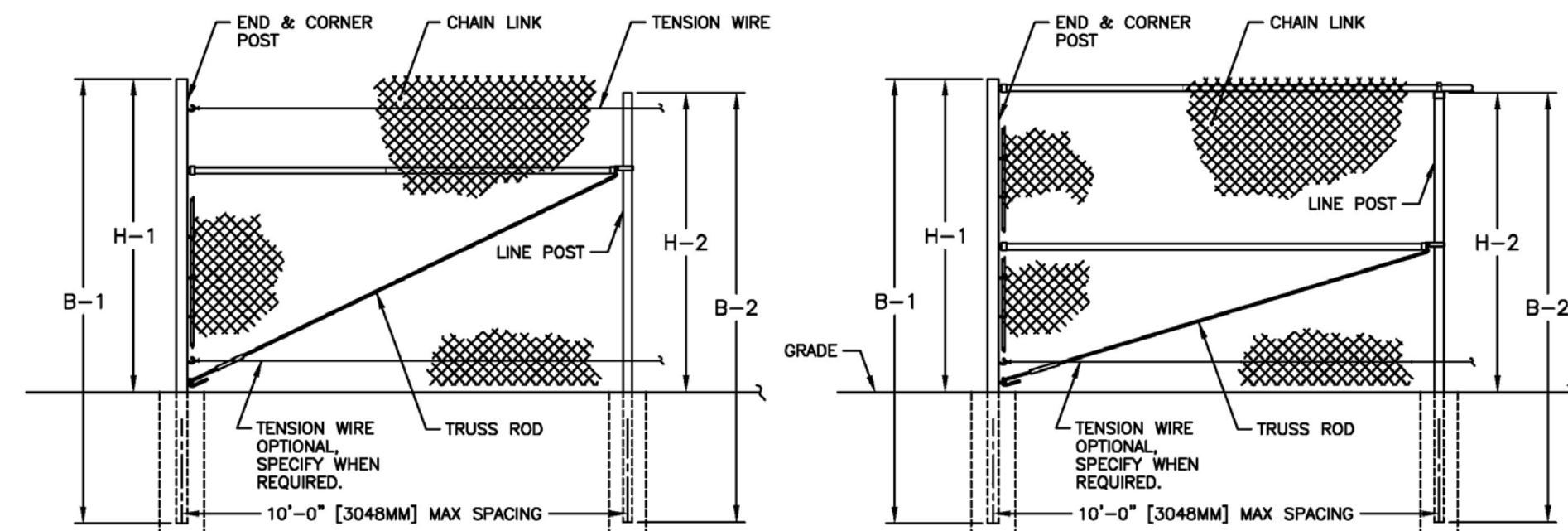
NOTE:
FENCE DETAILS ARE SHOWN FOR REFERENCE ONLY - SEE CIVIL PLANS FOR EXTENTS, CONFIGURATIONS, AND FINAL HEIGHTS



PROPOSED ORNAMENTAL FENCE

SCALE: NTS

2
A304



FENCE SECTION ELEVATION
WITHOUT TOP RAIL & WITHOUT BARBED WIRE

FENCE SECTION ELEVATION
WITH TOP RAIL & WITHOUT BARBED WIRE

FENCE HEIGHT NOMINAL HEIGHT	END & CORNER POSTS		LINE POSTS	
	B-1 BAR LENGTH	H-1 HEIGHT ABOVE GRADE	B-2 BAR LENGTH	H-2 HEIGHT ABOVE GRADE
5'-0" [1524MM]	8'-0" [2438MM]	5'-0 5/8" [1540MM]	7'-8" [2337MM]	4'-8 7/8" [1445MM]
6'-0" [1829MM]	9'-0" [2743MM]	6'-0 5/8" [1845MM]	8'-8" [2642MM]	5'-8 7/8" [1749MM]
7'-0" [2134MM]	10'-0" [3048MM]	7'-0 5/8" [2150MM]	9'-8" [2946MM]	6'-8 7/8" [2054MM]
8'-0" [2438MM]	11'-0" [3353MM]	8'-0 5/8" [2454MM]	10'-8" [3251MM]	7'-8 7/8" [2359MM]
9'-0" [2743MM]	12'-0" [3658MM]	9'-0 5/8" [2759MM]	11'-8" [3556MM]	8'-8 7/8" [2664MM]
10'-0" [3048MM]	13'-0" [3962MM]	10'-0 5/8" [3064MM]	12'-8" [3861MM]	9'-8 7/8" [2969MM]
11'-0" [3353MM]	14'-0" [4267MM]	11'-0 5/8" [3369MM]	13'-8" [4166MM]	10'-8 7/8" [3273MM]
12'-0" [3658MM]	15'-0" [4572MM]	12'-0 5/8" [3674MM]	14'-8" [4470MM]	11'-8 7/8" [3578MM]

- NOTES:
1. THIS DWG CORRESPONDS WITH DWGS 1-1110 & 1-1130.
2. SPECIFICATIONS SHOWN CAN BE CHANGED BY MASTER HALCO ONLY.



ANCHOR FENCE PRODUCTS
by Master Halco
Orange, CA
Phone No.: 800-229-5615
www.FenceOnline.com

TYPICAL HIGH FENCE WITHOUT BARBED WIRE

DIMENSIONS & SPECIFICATIONS

BY: JRR
DATE: 09-27-95
REV: C
REV DATE: 08-04-06

DWG: 1-1000
LAYER: 1
SCALE: 1/4" = 1'-0"

PROPOSED BLACK VINYL FENCE

SCALE: NTS

1
A304



1301 West 22nd Street
Suite #800
Oakbrook, IL 60523
847.232.5400 847.232.5691

ARCHITECT



HARRIS ARCHITECTS, INC.
4801 EMERSON AVENUE - SUITE 210
PALATINE, IL 60067
847.303.1155

LOT 5 BUTTERFIELD EAST - UNIT 3

FINAL PDD

DUKE PARKWAY

AURORA, ILLINOIS 60502

GUARD SHACK & FENCE DETAILS

ISSUANCES

ISSUED FOR FINAL PDD	02-24-2016
FINAL PDD REVISIONS	03-07-2016
FINAL PDD REVISIONS	03-24-2016
FINAL PDD - RESUBMIT	08-19-2016

#	Description	Date
---	-------------	------

DRAWING INFORMATION

Scale: AS NOTED
Date: AS NOTED
Checked By: KKK
Drawn By: KKK
Duke Realty Job #: DUKEAH-441
A/E Job #: 216027

DRAWING / SHEET TITLE

GUARD SHACK & FENCE DETAILS

SHEET NUMBER

A304