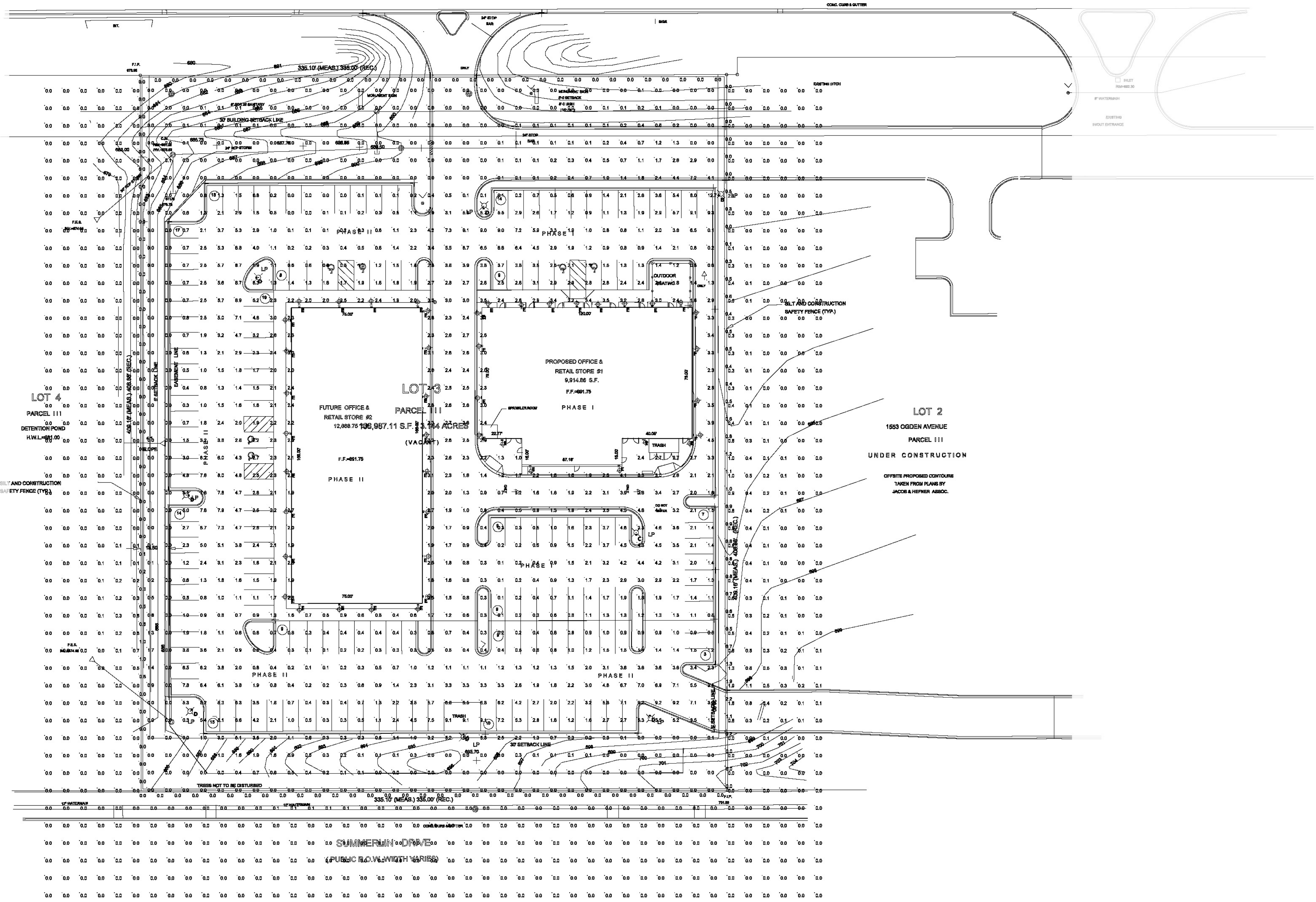


Symbol	Label	Quantity	Manufacturer	Catalog Number	Description	Lamp	Number Lamps	Filename	Lumens Per Lamp	Light Loss Factor	Wattage
□	B	1	Lithonia Lighting	DSX1 LED P8 40K LCCO MVOLT	DSX1 LED P8 40K LCCO MVOLT	LED	1	DSX1_LED_P8_40_K_LCCO_MVOLT.ies	14795	0.95	207
□	C	1	Lithonia Lighting	DSX1 LED P8 40K T5M MVOLT	DSX1 LED P8 40K T5M MVOLT	LED	1	DSX1_LED_P8_40_K_T5M_MVOLT.ies	25179	0.95	207
□	D	6	Lithonia Lighting	DSX1 LED P8 40K BLC MVOLT	DSX1 LED P8 40K BLC MVOLT	LED	1	DSX1_LED_P8_40_K_BLC_MVOLT.ies	19884	0.95	207
□	E	41	Lithonia Lighting	DSXW1 LED 10C 350 40K T4M MVOLT	DSXW1 LED WITH (1) 10 LED LIGHT ENGINES, TYPE T4M OPTIC, 4000K, @ 350mA.	LED	1	DSXW1_LED_10C_350_40K_T4M_MVOLT.ies	1458	0.95	13.3
□	F	4	Lithonia Lighting	DSXW1 LED 10C 350 40K T2S MVOLT HS	DSXW1 LED WITH (1) 10 LED LIGHT ENGINES, TYPE T2S OPTIC, 4000K, @ 350mA WITH HOUSE-SIDE SHIELDS.	LED	1	DSXW1_LED_10C_350_40K_T2S_MVOLT_HS.ies	1324	0.95	13.3

Description	Symbol	Avg	Max	Min	Max/Min	Avg/Min
Calc Zone Entire Site	+	1.7 fc	12.7 fc	0.0 fc	N/A	N/A
Calc Zone Past Property Line	X	0.1 fc	2.1 fc	0.0 fc	N/A	N/A
Calc Zone Property Line	■	0.2 fc	2.2 fc	0.0 fc	N/A	N/A

Luminaire Locations

Location						
No.	Label	X	Y	MH	Orientation	Tilt
1	B	343.10	344.30	20.00	225.00	0.00
1	C	295.17	150.63	20.00	180.00	0.00
1	D	38.20	172.00	20.00	90.00	0.00
2	D	208.00	337.20	20.00	180.00	0.00
3	D	79.40	296.60	20.00	270.00	0.00
4	D	302.90	44.90	20.00	0.00	0.00
5	D	196.50	34.10	20.00	0.00	0.00
6	D	40.40	48.70	20.00	45.00	0.00
1	E	102.70	279.80	9.00	0.00	0.00
2	E	125.50	279.80	9.00	0.00	0.00
3	E	143.90	279.90	9.00	0.00	0.00
4	E	170.40	279.90	9.00	0.00	0.00
5	E	210.60	279.90	9.00	0.00	0.00
6	E	229.30	280.20	9.00	0.00	0.00
7	E	245.60	279.90	9.00	0.00	0.00
8	E	261.20	280.00	9.00	0.00	0.00
9	E	273.20	279.80	9.00	0.00	0.00
10	E	288.50	280.00	9.00	0.00	0.00
11	E	304.30	279.90	9.00	0.00	0.00
12	E	320.60	280.20	9.00	0.00	0.00
13	E	325.00	203.90	9.00	180.00	0.00
14	E	299.20	203.90	9.00	180.00	0.00
15	E	285.30	189.10	9.00	180.00	0.00
16	E	234.50	189.00	9.00	180.00	0.00
17	E	218.40	203.90	9.00	180.00	0.00
18	E	173.30	256.10	9.00	90.00	0.00
19	E	173.30	228.50	9.00	90.00	0.00
20	E	173.40	206.30	9.00	90.00	0.00
21	E	173.30	185.90	9.00	90.00	0.00
22	E	173.40	162.70	9.00	90.00	0.00
23	E	206.50	276.40	9.00	270.00	0.00
24	E	206.70	257.50	9.00	270.00	0.00
25	E	206.60	228.10	9.00	270.00	0.00
26	E	206.60	206.80	9.00	270.00	0.00
27	E	97.90	185.70	9.00	270.00	0.00
28	E	97.80	207.30	9.00	270.00	0.00
29	E	97.80	230.30	9.00	270.00	0.00
30	E	97.80	254.40	9.00	270.00	0.00
31	E	97.60	272.10	9.00	270.00	0.00
32	E	97.60	114.00	9.00	270.00	0.00
33	E	97.70	137.00	9.00	270.00	0.00
34	E	97.70	162.80	9.00	270.00	0.00
35	E	102.80	109.60	9.00	0.00	0.00
36	E	125.60	109.70	9.00	0.00	0.00
37	E	144.00	109.60	9.00	0.00	0.00
38	E	170.40	109.60	9.00	0.00	0.00
39	E	173.40	114.20	9.00	90.00	0.00
40	E	173.30	137.30	9.00	90.00	0.00
41	E	173.40	277.30	9.00	90.00	0.00
1	F	327.70	276.00	9.00	90.00	0.00
2	F	327.40	255.50	9.00	90.00	0.00
3	F	327.50	225.80	9.00	90.00	0.00
4	F	327.80	206.60	9.00	90.00	0.00



Plan View
Scale - 1" = 30'