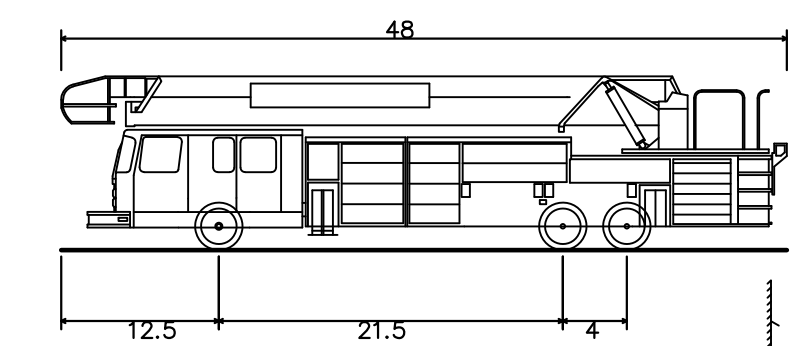
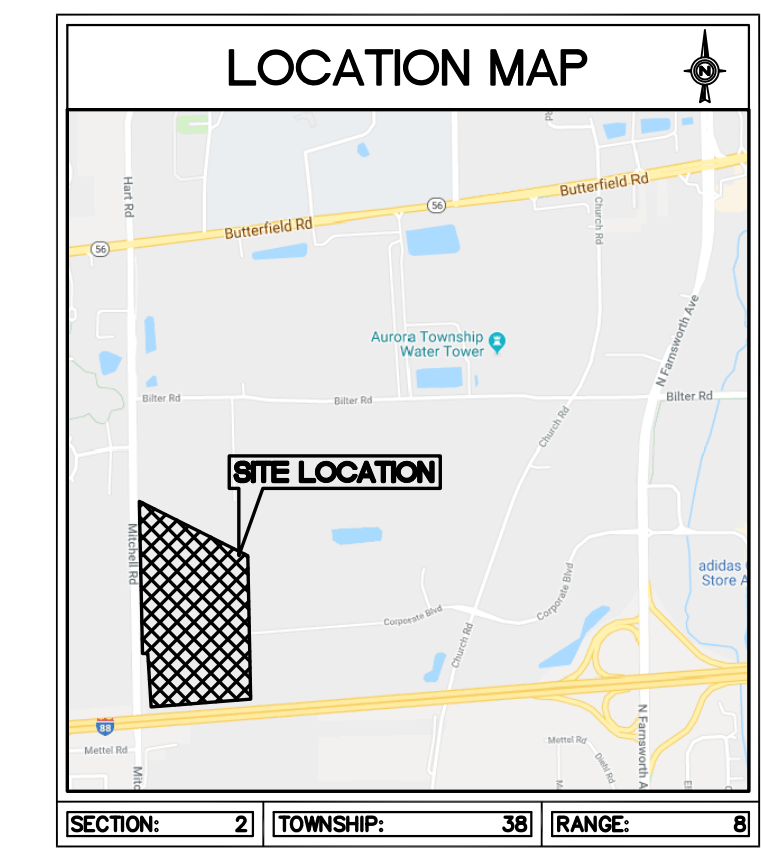
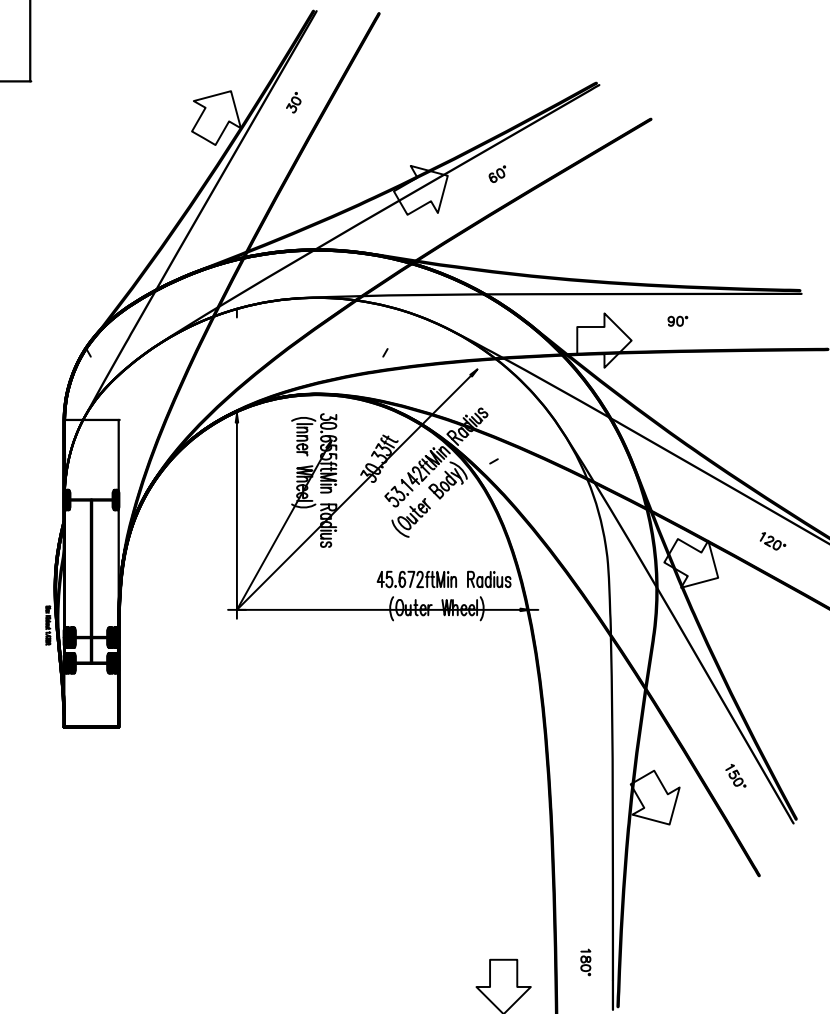


FIRE ACCESS PLAN FOR MITCHELL ROAD INDUSTRIAL PARK (LOTS 1 AND 4)

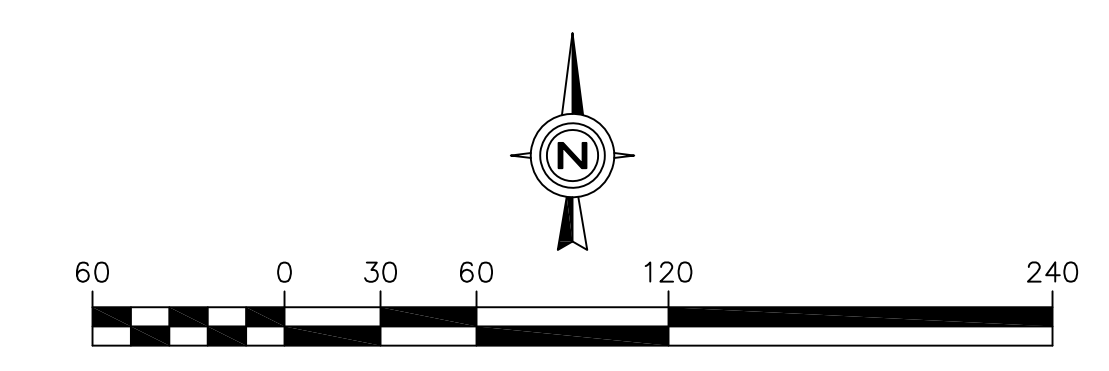
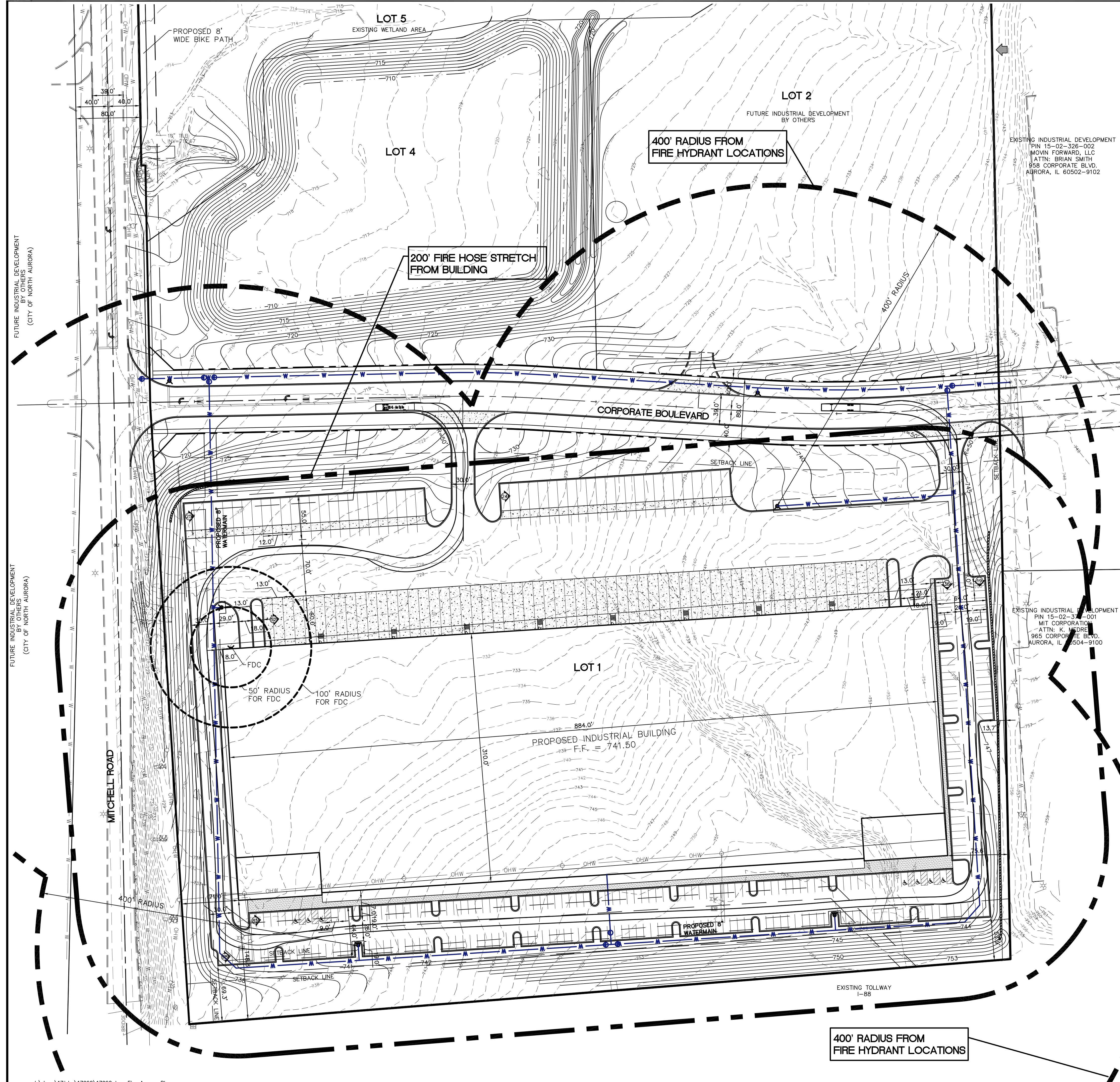
LEGEND		
EXISTING	DESCRIPTION	PROPOSED
⊙	GATCH BASIN	⊙
⊙	INLET	⊙
⊙	STORM MANHOLE	⊙
⊙	SANITARY MANHOLE	⊙
⊙	VALVE VAULT	⊙
⊙	FIRE HYDRANT	⊙
⊙	FLARED END SECTION	⊙
⊙	ELECTRICAL POWER POLE	⊙
⊙	OVERHEAD ELECTRIC WIRES	⊙
⊙	TRANSFORMER PAD	⊙
⊙	LIGHT POLE	⊙
⊙	SIGN	⊙
⊙	BOLLARD POLE	⊙
⊙	WATER MAIN	⊙
⊙	GAS MAIN	⊙
⊙	ELECTRIC LINE	⊙
⊙	TELEPHONE LINE	⊙
⊙	CABLE TV LINE	⊙
⊙	SANITARY SEWER	⊙
⊙	STORM SEWER	⊙
⊙	CONIFEROUS TREE W/DIAMETER	⊙
⊙	DECIDUOUS TREE W/DIAMETER	⊙
⊙	WOOD FENCE	⊙
⊙	CHAIN LINK FENCE	⊙
⊙	METAL GUARDRAIL	⊙
⊙	CONCRETE SURFACE	⊙
⊙	CONTOUR LINE	⊙
⊙	PERVIOUS AREA SLOPE DIRECTION	⊙
⊙	PAVEMENT SLOPE DIRECTION	⊙
⊙	OVERLAND OVERFLOW DIRECTION	⊙



AASHTO (BUS-45) Inner City Bus	
Overall Length	48.000ft
Overall Width	8.500ft
Overall Body Height	10.850ft
Min Body Ground Clearance	0.950ft
Track Width	8.500ft
Lock-to-lock time	5.00s
Max Steering Angle (Virtual)	34.00°



Fire Access Plan Data Table		
Description	Value	Unit
a) Building Height	39.00	feet
b) Building Square Footage (typical)	275,000	square feet
c) Building fire suppression information including any proposed use of sprinkler systems, fire alarm systems, whether fire extinguishers are needed: Fire protection system will be an ESFR type system.		
d) General description of business to be conducted within each building including: will there be rack storage in the building, will there be storage of combustible materials over twelve feet in height, clearance of sprinkler heads and stored materials (18 inch minimum): The typical user of these types of building will rack at least a portion of the building as high as 28'. The		



NO.	REVISIONS	DATE	
1	REVISED PER COMMENTS FROM COA	5-2-18	
2	REVISED PER COMMENTS FROM COA	5-8-18	
3	REVISED PER COMMENTS FROM COA	6-1-18	

Prepared For:
The Pizzuti Companies
2001 Butterfield Road, Suite 440
Downers Grove, IL 60515
MITCHELL RD. INDUSTRIAL PARK - AURORA, IL
Mitchell Road at Corporate Blvd.
Aurora, Illinois

Prepared By:
Watermark Engineering Resources, Ltd
2631 Ginger Woods Parkway, Suite 100, Aurora, IL 60502
phone 630-575-1800 fax 630-236-9600 www.watermark-engineering.com

CHECKED BY: B. PERRY
DESIGN BY: B. PERRY
DRAWN BY: DMORUK
DATE: APRIL 20, 2018
SCALE: 1" = 60'
PROJECT NO.: 17-062

1 of 1

FIRE ACCESS PLAN

J:\dwgs\17jobs\17062\17062.dwg, Fire Access Plan