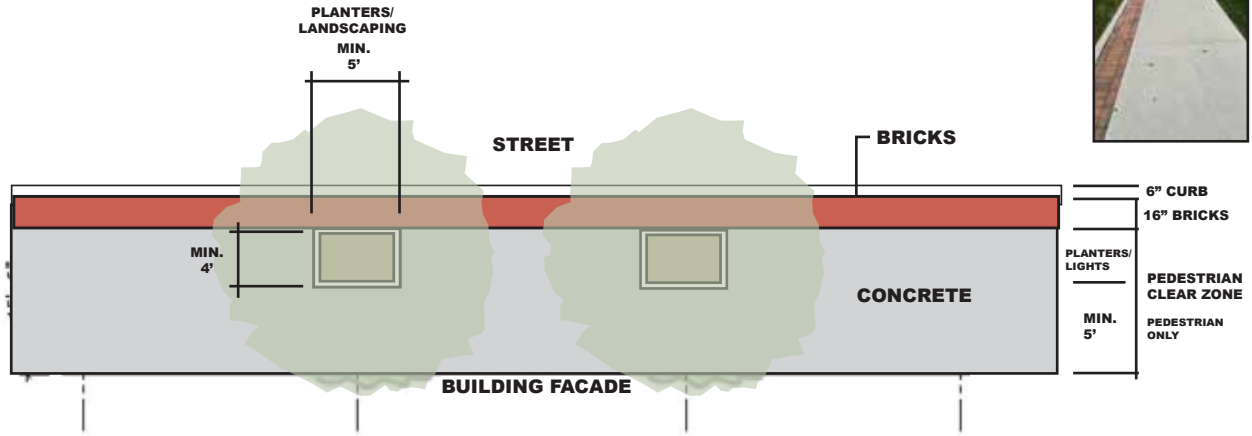


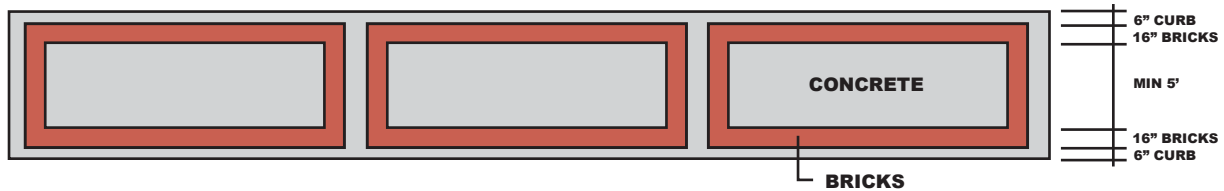
FOXWALK DESIGN GUIDELINES: PAVER ELEMENTS

OPPORTUNITIES FOR FLEXIBILITY: Although the following three design types are recommended there should be opportunities for flexibility. For example, having pockets of distinct areas helps define character and create visual interest.

TYPICAL DESIGN



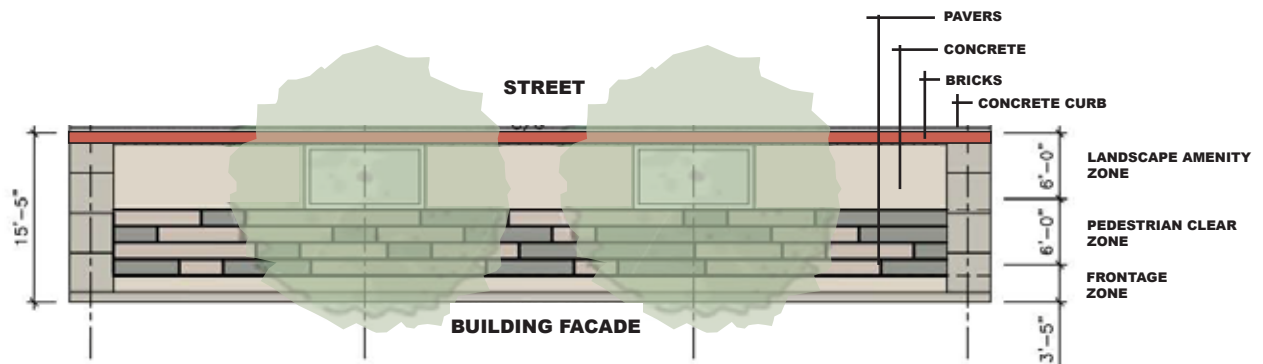
RIVERWALK DESIGN



RIVERWALK ALONG WAUBONSEE COLLEGE



BROADWAY DESIGN



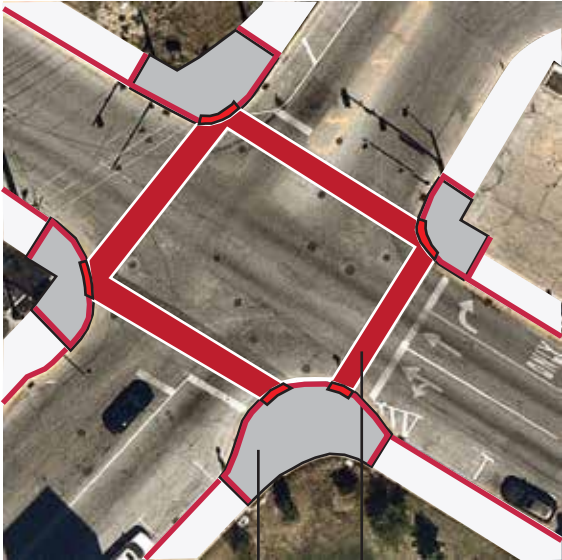
FOXWALK DESIGN GUIDELINES: INTERSECTIONS

TYPICAL INTERSECTION

EXISTING INTERSECTION (W. NEW YORK/RIVER)



GUIDELINES FOR IMPROVING EXISTING INTERSECTION (W. NEW YORK/RIVER)



COLORED CONCRETE OR PAVERS
UNILOCK PAVER

VISION (EXISTING BENTON AND STOLP)



FOXWALK DESIGN GUIDELINES: **PLANTER BEDS**

STREET TREES

Trees provide shade and increase comfort for pedestrians. Trees are recommended to only be planted within raised planters to ensure a quality living environment and extended life expectancy. The City shall select a variety of tree species and cultivars which are tolerant of salt and urban conditions. Additionally, the mix of trees should consider spring flower, fall color, and summer attractiveness, as well as space available for the root system and crown.

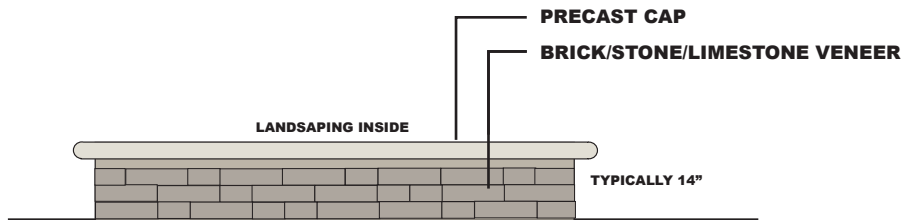
RAISED PLANTERS

Raised planters should be utilized in amenity areas that are 4 ½ feet or wider. The raised planter should be no smaller than 4' x 6' in size, and will be raised 6 inches off the ground with a concrete curb and shall be irrigated.

FIRST TIER DESIGN

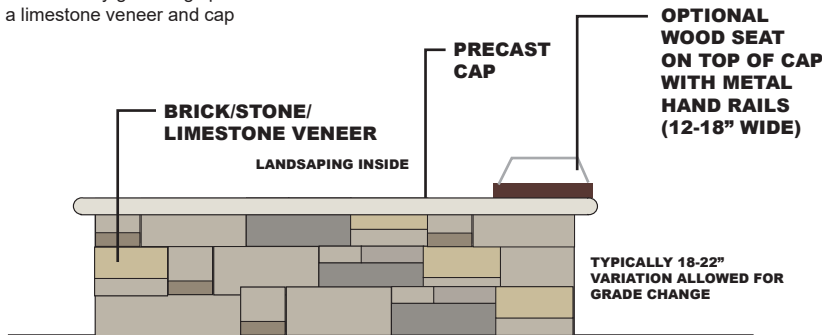


SECOND TIER DESIGN

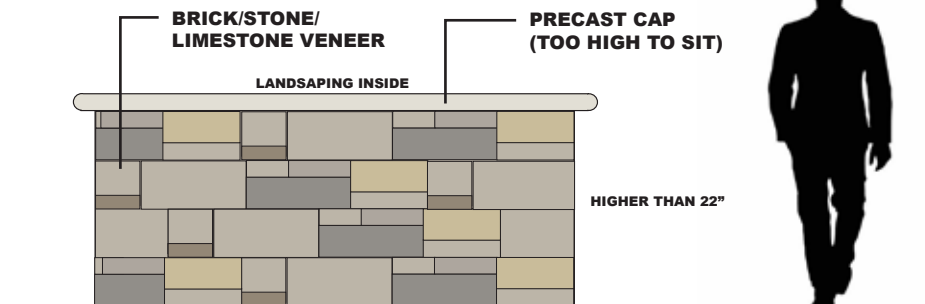


THIRD TIER DESIGN

The guidelines encourage limestone seat walls to be incorporated where space allows and to enhance key gathering spaces. Walls shall have a limestone veneer and cap



FOURTH TIER DESIGN



FOXWALK DESIGN GUIDELINES: TREES & PLANTS

STREET TREES

Trees are recommended to only be planted within raised planters to ensure a quality living environment and extended life expectancy. The City shall select a variety of tree species and cultivars which are tolerant of salt and urban conditions. Additionally, the mix of trees should consider space available for the root system and crown.

RAISED PLANTERS

Raised planters shall be utilized where the amenity areas are 4'-6" or wider. The planters will not encroach the carriage walk or walking area. Raised planters will be no smaller than 4' x 6' in size, and will be raised 6" off the ground with a concrete curb. In some instances, a limestone seat wall will be combined with the concrete curb as part of a raised bed. Where pedestrian zones widen and allow for wider amenity areas, planters too can become wider for more plant variety.

IRRIGATION

All raised planters shall be irrigated with a spray irrigation system and supplied with a quick coupler valve.

