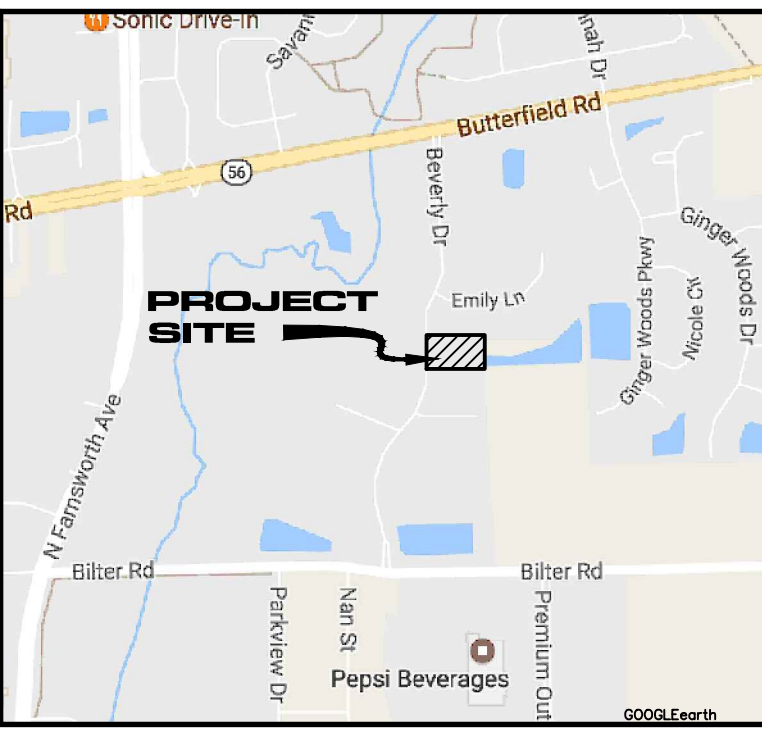


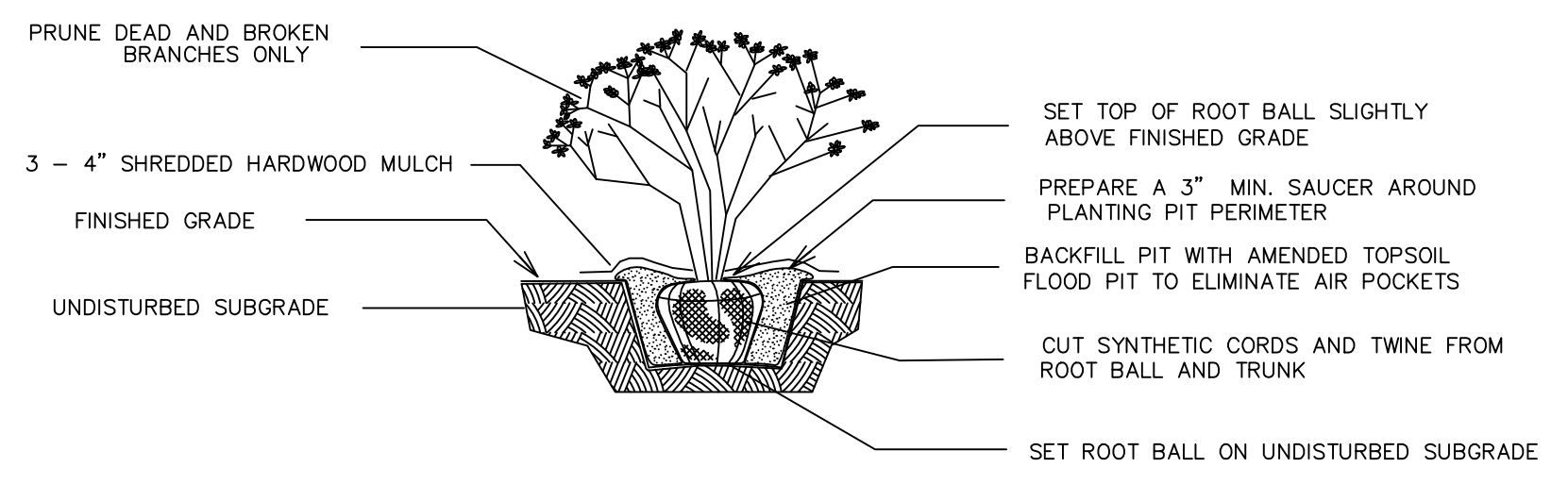
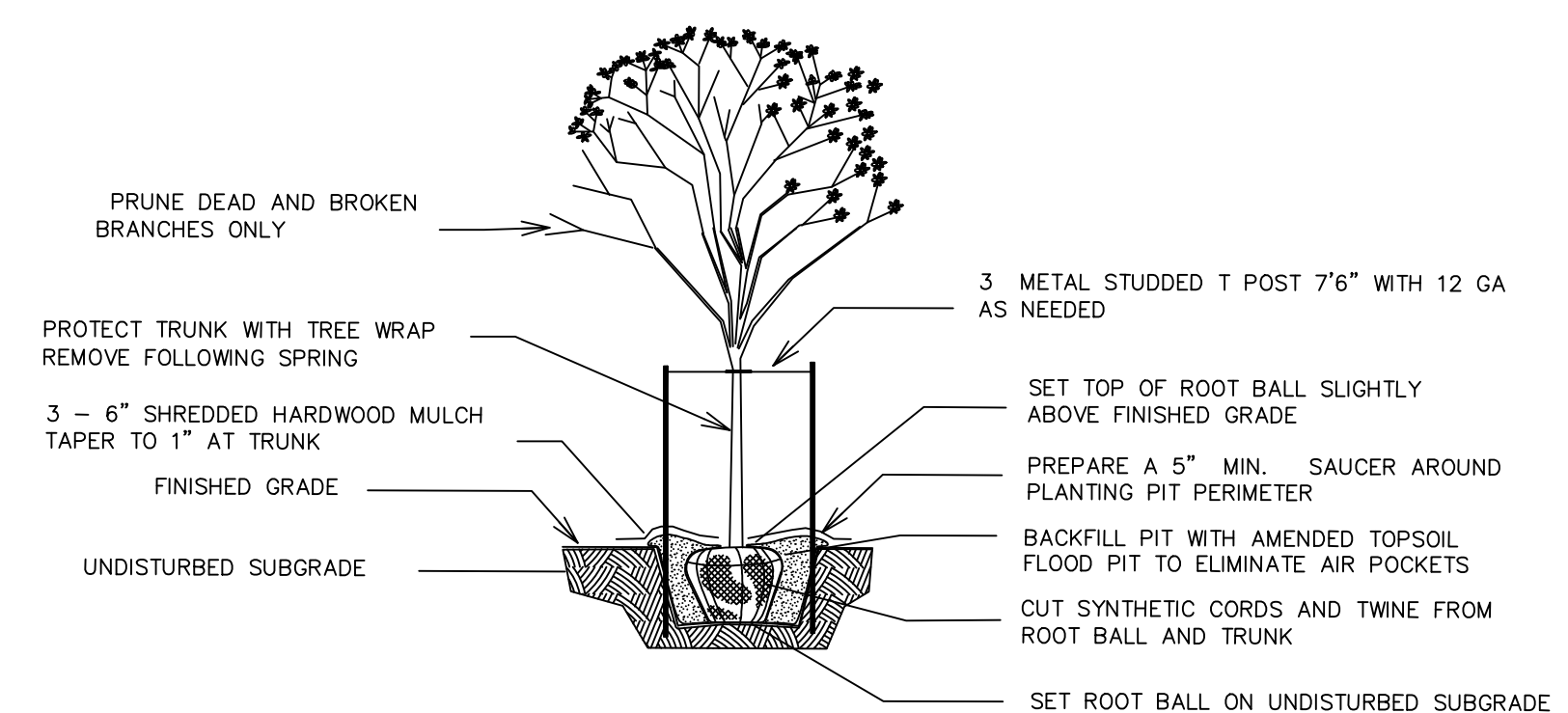
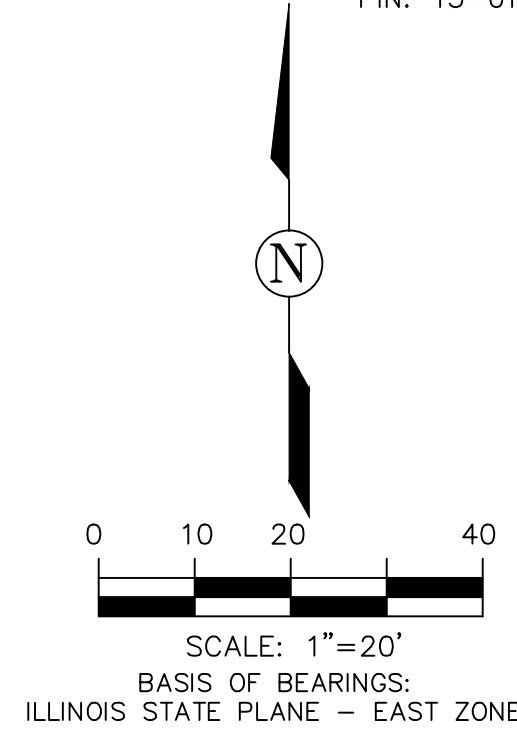
LANDSCAPE PLAN FOR 2731 BEVERLY DRIVE AURORA, ILLINOIS

PART OF THE NORTH HALF OF SECTION 1, TOWNSHIP 38 NORTH, RANGE 8, EAST OF THE THIRD PRINCIPAL MERIDIAN, IN THE CITY OF AURORA, KANE COUNTY, ILLINOIS

PIN: 15-01-203-002



VICINITY MAP
N.T.S.



GENERAL SEED SPECIFICATIONS

- SEED RATE 250 LBS/ACRE
- 20% FREEDOM III KENTUCKY BLUEGRASS
- 20% BLUE CHIP KENTUCKY BLUEGRASS
- 30% TOP GUN PERENNIAL RYEGRASS
- 30% GOALKEEPER PERENNIAL RYEGRASS

TURF FERTILIZATION

6-24-24 STARTER FERTILIZER
RATE: 250 LBS/ACRE

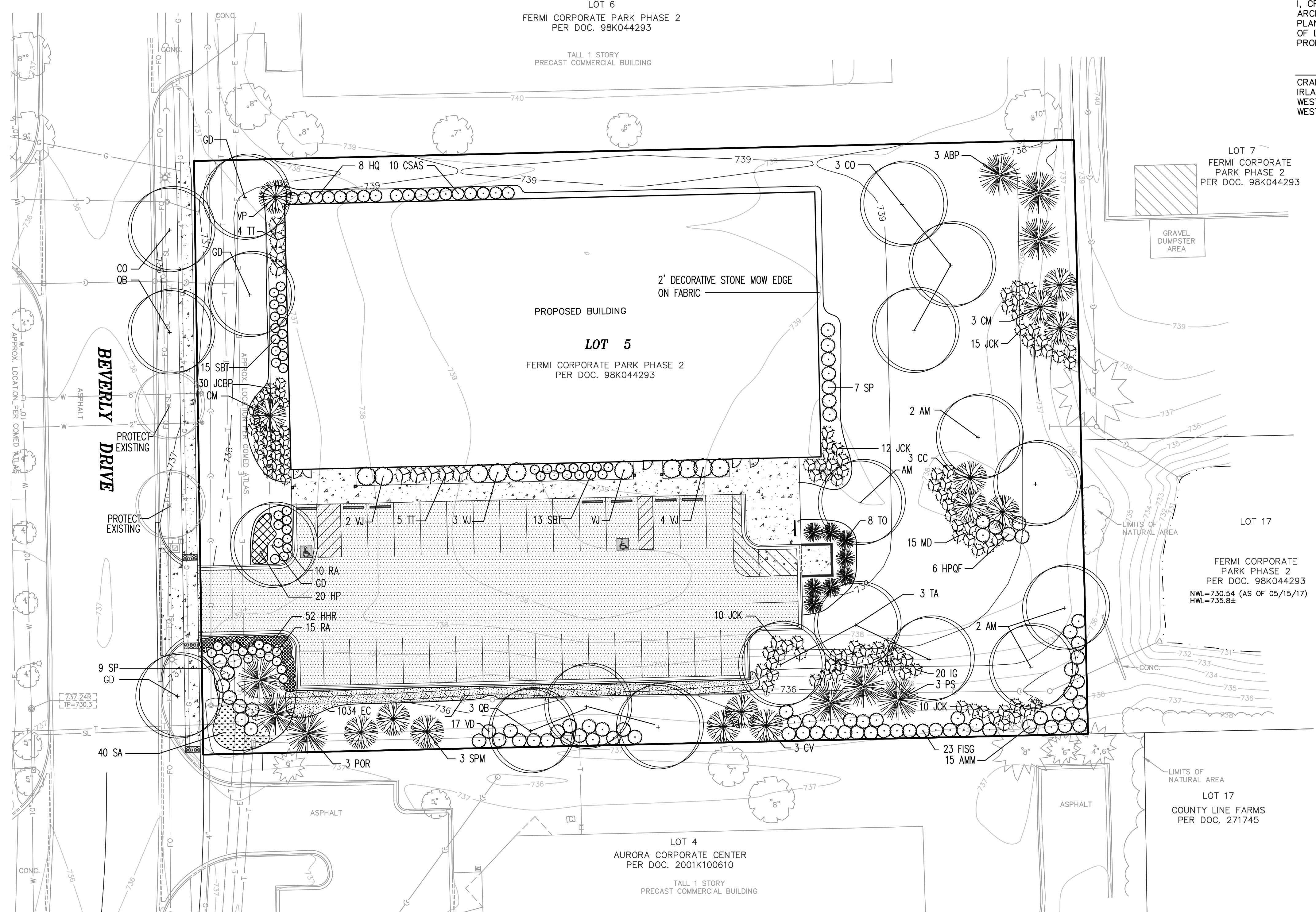
SEED AND STRAW BLANKET ALL TURF AREAS

TREE, SHRUB AND PLANT BED FERTILIZATION

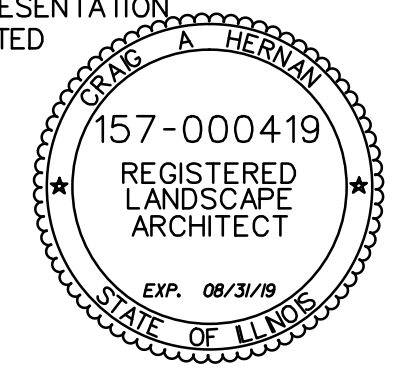
LESCO 14-14-14 PLOY PLUS SULFUR COATED
RATE: 5 POUNDS PER 1000 S.F. PLANT BEDS
ONE POUND PER CALIPER INCH FOR TREES
LANDSCAPE AND ORNAMENTAL ALL PURPOSE FERTILIZER

GENERAL NOTES

- ALL PLANT MATERIAL SHALL BE NORTHERN ILLINOIS NURSERY GROWN TO ASSURE CLIMATIC AND SOIL SIMILARITY. ALL MATERIAL SHALL BE BALLED AND BURLAP PER AMERICAN STANDARD FOR NURSERY STOCK BY THE AMERICAN ASSOCIATION OF NURSEYMEN, INC. PERENNIAL AND GROUND COVER SHALL BE CONTAINER GROWN.
- ALL BEDS SHALL RECEIVE 3-4" OF FINELY SHREDDED HARDWOOD MULCH. GROUND COVER BEDS SHALL BE TREATED WITH TRIFLUR PRE-EMERGENT HERBICIDE. ALL OTHER BEDS SHALL RECEIVE RONSTAR 5G OR SIMILAR PRE-EMERGENT HERBICIDE FOR WEED CONTROL. ALL TREES SHALL RECEIVE 6" OF FINELY SHREDDED HARDWOOD MULCH. ALL LANDSCAPE SPOILS SHALL BE REMOVED FROM THE SITE BY THE CONTRACTOR.
- OWNER SHALL PROVIDE SUFFICIENT WATER FOR THE CONTRACTOR TO MAINTAIN THE PLANT MATERIAL, AND SEED AREAS. CONTRACTOR SHALL WATER SEED UNTIL THE TURF HAS BECOME ADEQUATELY ESTABLISHED. CONTRACTOR SHALL WARRANTEE ALL MATERIAL AND LABOR FOR A PERIOD OF ONE YEAR FROM ACCEPTANCE OF ALL WORK. OWNER TO PROVIDE ALL SUPPLEMENTAL WATERING AND PROPER CARE AND MAINTENANCE OF ALL MATERIAL AFTER CONTRACTOR'S INITIAL CARE.
- QUANTITY LISTS ARE SUPPLIED AS A CONVENIENCE. THE CONTRACTOR SHALL VERIFY ALL QUANTITIES ON-SITE. THE CONTRACTOR SHALL VERIFY LOCATIONS OF ALL UNDERGROUND UTILITIES PRIOR TO DIGGING.
- PLANTING BEDS SHALL BE ELEVATED SLIGHTLY TO INSURE PROPER DRAINAGE. ALL ROOT BALLS OF TREES SHALL BE ELEVATED ABOVE FINISHED GRADE. ALL GRADING SHALL PROVIDE SLOPES WHICH ARE SMOOTH, CONTINUOUS AND HAVE POSITIVE DRAINAGE IN ALL AREAS.
- CONTRACTOR SHALL BE RESPONSIBLE FOR PROVIDING TEMPORARY EROSION CONTROL FOR SOIL AREAS DUE TO SLOPE CONDITIONS. CONTRACTOR SHALL MAINTAIN ALL EROSION CONTROL STRUCTURES, FENCES, DITCH CHECKS, AND INLET PROTECTORS UNTIL ADEQUATE VEGETATION HAS BEEN ESTABLISHED.
- EXCAVATED MATERIALS IN EXCESS OR THOSE NOT REQUIRED OR UNSUITABLE FOR RE-USE SHALL BE DISPOSED OF OFF SITE AT CONTRACTOR'S EXPENSE. CONTRACTOR SHALL REMOVE ALL DEBRIS DAILY AND MAINTAIN THE SITE IN A NEAT AND SAFE CONDITION.
- LANDSCAPE CONTRACTOR SHALL PROVIDE THE OWNER WITH AN EQUIPMENT AND LABOR RATE SCHEDULE. THIS LIST SHALL INCLUDE COST OF TOPSOIL AND LANDSCAPE DEBRIS/SPOILS REMOVAL WITH SQUARE FOOT COST FOR TURF RESTORATION (SOD AND SEED). LANDSCAPE CONTRACTOR SHALL RESTORE ALL TURF AREAS DAMAGED DUE TO CONSTRUCTION ON AND OFF SITE AT THE AGREED RATES TO RESTORE TO EXISTING CONDITIONS.
- LANDSCAPE CONTRACTOR SHALL FOLLOW ALL LOCAL AND MUNICIPAL CODES AND REQUIREMENTS. CONTRACTOR SHALL SECURE ALL REQUIRED PERMITS AS NECESSARY TO COMPLETE THE SCOPE OF THE JOB.



I, CRAIG A. HERNAN, ILLINOIS REGISTERED LANDSCAPE ARCHITECT NO. 157-000419 DO HEREBY CERTIFY THE PLAN SHOWN HEREON IS A CORRECT REPRESENTATION OF LANDSCAPE IMPROVEMENTS TO THE NOTED PROPERTY.



CRAIG A. HERNAN
IRLA # 157-000419
WESTWOOD LANDSCAPE
WEST CHICAGO, ILLINOIS

Landscape Data Table: CTEs Provided

	CTE Value	Count Provided	Total CTEs Provided
Canopy Trees	1	23	23
Evergreens/ Understory	3	31	9.30
Shrubs	20	246	12.30
Perennials	0	112	0.00
Overizing Credit			
Total:		412	44.60

LEGEND

	CANOPY TREE COUNT (MIN. 2.5" CAL)	23
	EVERGREEN TREE COUNT (MIN. 6' HGT.)	17
	UNDERSTORY TREE COUNT (MIN. 2.5" CAL OR 8' MS)	14
	DECIDUOUS SHRUB COUNT (MIN. OF 18")	121
	EVERGREEN SHRUB COUNT (MIN. OF 18")	125
	ORNAMENTAL GRASS COUNT	40
	PERENNIALS COUNT	72
	ANNUALS COUNT	0
	GROUND COVER COUNT	1034

ROAKE AND ASSOCIATES, INC.
CONSULTING ENGINEERS • LAND SURVEYORS • PLANNERS
1884 QUINCY AVENUE, SUITE 100A • NAPERVILLE, ILLINOIS 60564
TEL (630) 365-3232 • FAX (630) 365-3267

PREPARED FOR:
Q79 SOFTWARE
1323 BOND STREET, SUITE 103
NAPERVILLE, ILLINOIS 60563
TEL. (630) 592-5022
FAX. (866) 913-5022

REVISIONS

NO.	DATE	DESCRIPTION	NO.	DATE	DESCRIPTION
1	11/06/17	REV. PER CITY RVW DATED 10/9/17			

2731 BEVERLY DRIVE - AURORA, ILLINOIS

LANDSCAPE PLAN

DRN/CKD BY: SRH/JGC 8551LS FLD. BK./PG. 266/65 SHEET NO. 1 OF 1
SCALE: 1"=20' 09/22/17 JOB NO.: 855.001