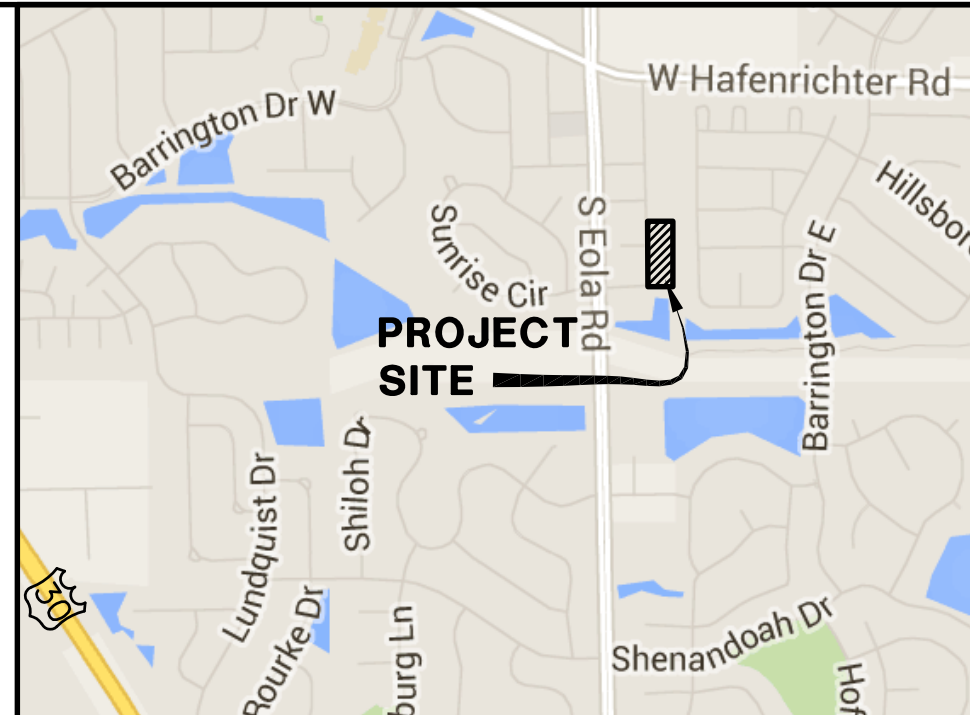
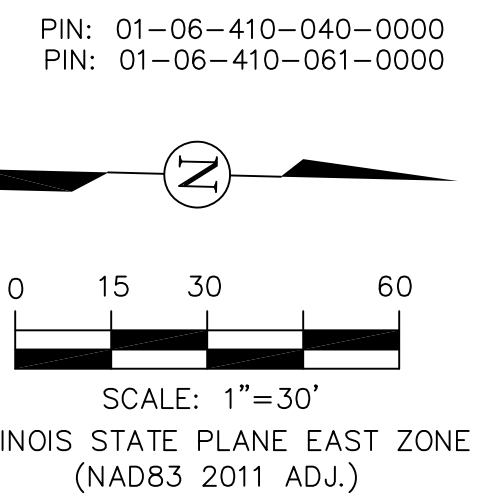


FIRE ACCESS PLAN

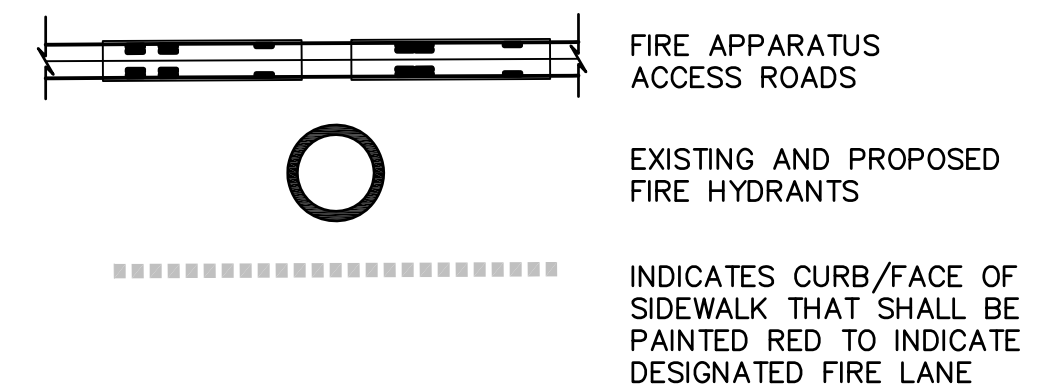
OF
PART OF THE SOUTHEAST QUARTER OF SECTION 6, TOWNSHIP 37
NORTH, RANGE 9, EAST OF THE THIRD PRINCIPAL MERIDIAN, IN
WILL COUNTY, ILLINOIS



LOCATION MAP

N.T.S.

LEGEND



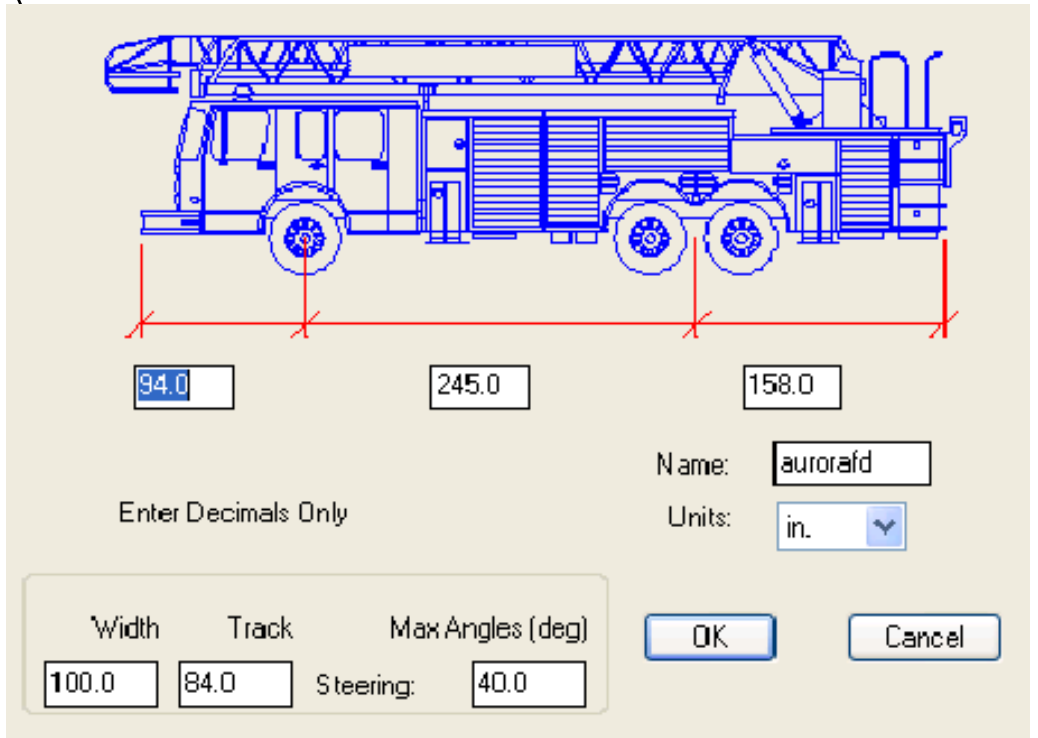
SITE DATA

USE: TENNIS FACILITY
LOT AREA: 93,996 SF
BUILDING AREA: 27,600 SF
BUILDING HEIGHT: 30' AT RIDGELINE

- NOTES:
- THE BUILDING'S FIRE SUPPRESSION WILL INCLUDE A SPRINKLER SYSTEM, FIRE ALARM SYSTEM, AND FIRE EXTINGUISHERS.
 - FIRE LANE SIGNAGE SHALL BE PROVIDED IN ACCORDANCE WITH THE CITY OF AURORA'S ADOPTED CODES. AN ADDITIONAL SIGN PLATE SHALL BE ADDED INDICATING "FINE \$50.00".

LADDER TRUCK DETAIL

N.T.S.



LEGEND

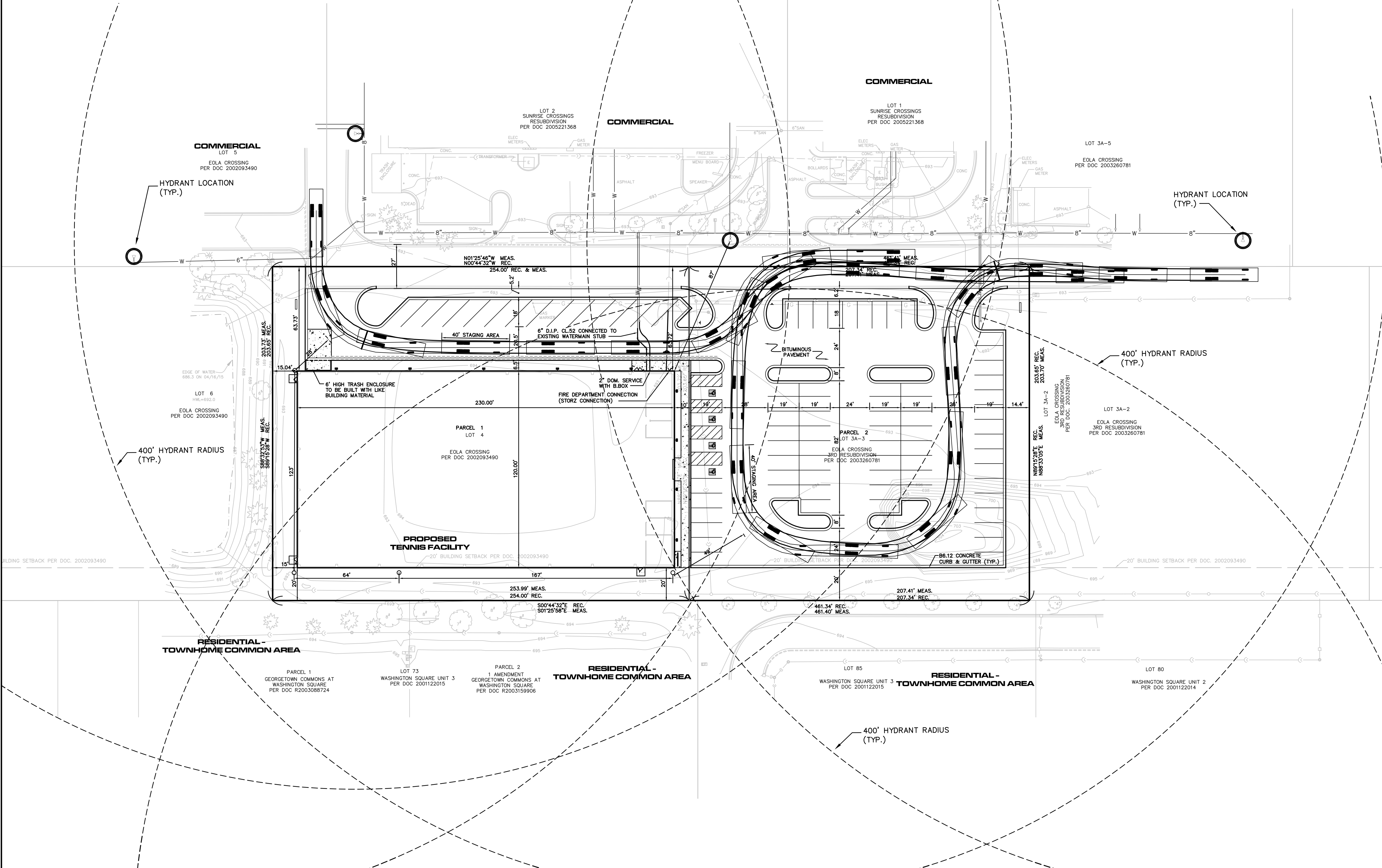
PROPOSED	EXISTING	DESCRIPTION	PROPOSED	EXISTING	DESCRIPTION
⊙	⊙	MANHOLE	⊙	⊙	BUILDING MOUNTED LUMINAIRE
⊙	⊙	CATCH BASIN	⊙	⊙	STREET LIGHT
⊙	⊙	INLET	⊙	⊙	STRUCTURE CALLOUT
—	—	STORM SEWER	—	—	ELECTRIC LINE
—	—	SANITARY SEWER	—	—	GAS LINE
—	—	WATERMAIN	—	—	TELEPHONE LINE
⊙	⊙	VALVE & VAULT	—	—	SEWAGE LINE
⊙	⊙	VALVE & BOX	—	—	CURB
⊙	⊙	FIRE HYDRANT	—	—	CENTERLINE
⊙	⊙	POWER POLE	—	—	
—	—	CONTOURS			

ABBREVIATIONS

000.00' M	MEASURED DATA
000.00' C	COMPUTED DATA
000.00' R.	RECORD DATA
R=	RADIUS
A=	ARC LENGTH

LINETYPE LEGEND

—	BOUNDARY LINE
—	ADJOINER LOT LINE
—	CENTER LINE
—	RIGHT OF WAY
—	EASEMENT LINE
—	BUILDING LINE
—	SECTION LINE
—	UNDERLYING LOT LINE



© COPYRIGHT 2015 ROAKE AND ASSOCIATES, INC. ALL RIGHTS RESERVED

ROAKE AND ASSOCIATES, INC.
CONSULTING ENGINEERS • LAND SURVEYORS • PLANNERS
1684 QUINCY AVENUE, SUITE 100A • NAPERVILLE, ILLINOIS 60640
TEL (630) 366-3232 • FAX (630) 366-3267

OWNER:
EOLA TENNIS BUILDING LLC
3S405 SADDLE RIDGE COURT
WARRENVILLE, ILLINOIS, 60555
TEL: (630) 415-6501
FAX: (630) 657-1038

REVISIONS		
NO.	DATE	DESCRIPTION
1	7/13/15	REV. PER CITY REVIEW
2	8/26/15	NO REV. THIS SHEET
3	9/21/15	REV. PER CITY REVIEW

EOLA TENNIS BUILDING SUBDIVISION

FIRE ACCESS PLAN

DRN./CKD. BY: SRH/JGC	FILE: 8061FIRE	FLD. BK./PG.: 259/55-58	SHEET NO. 1 OF 1
SCALE: 1"=30'	DATE: 07/01/15	JOB NO.: 806.001	