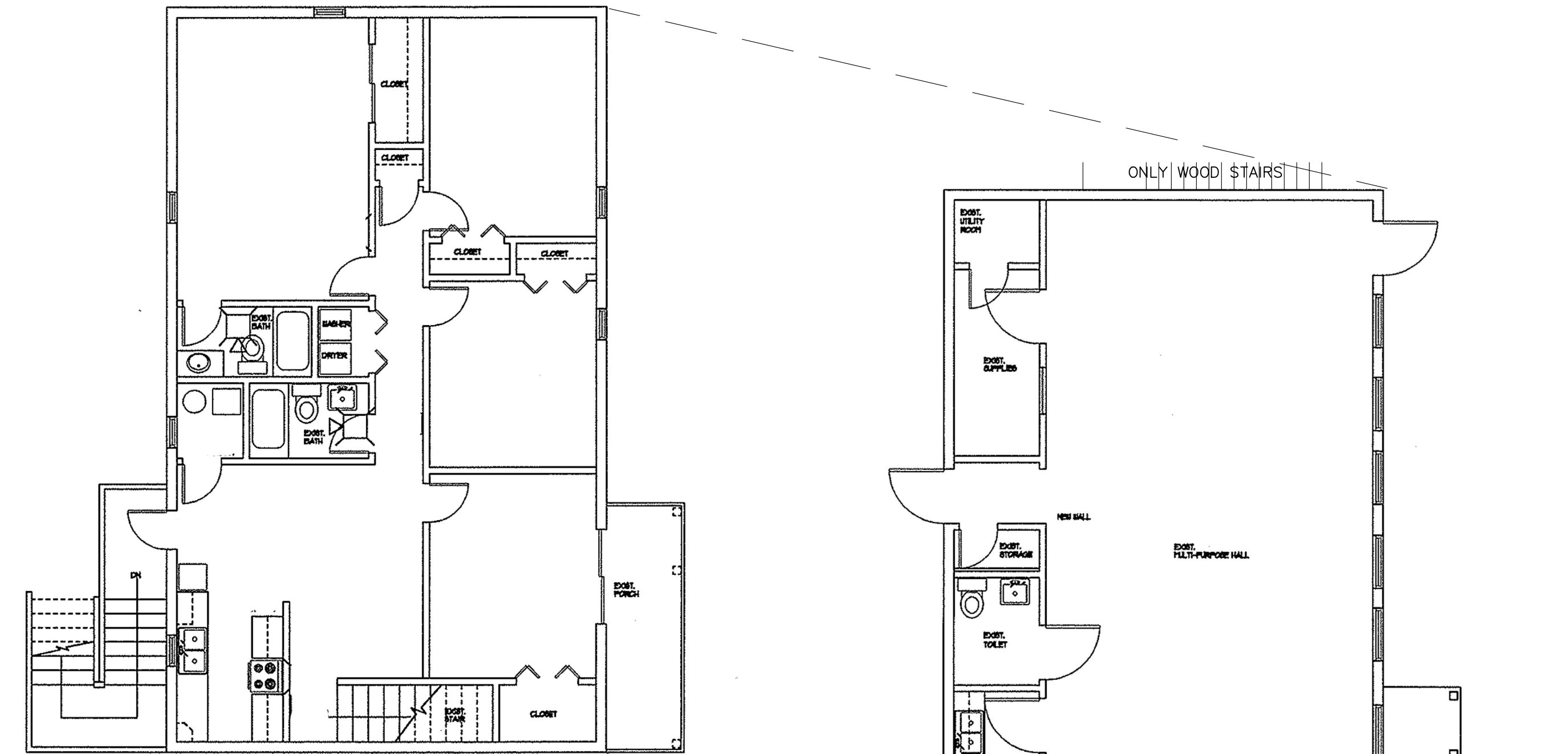
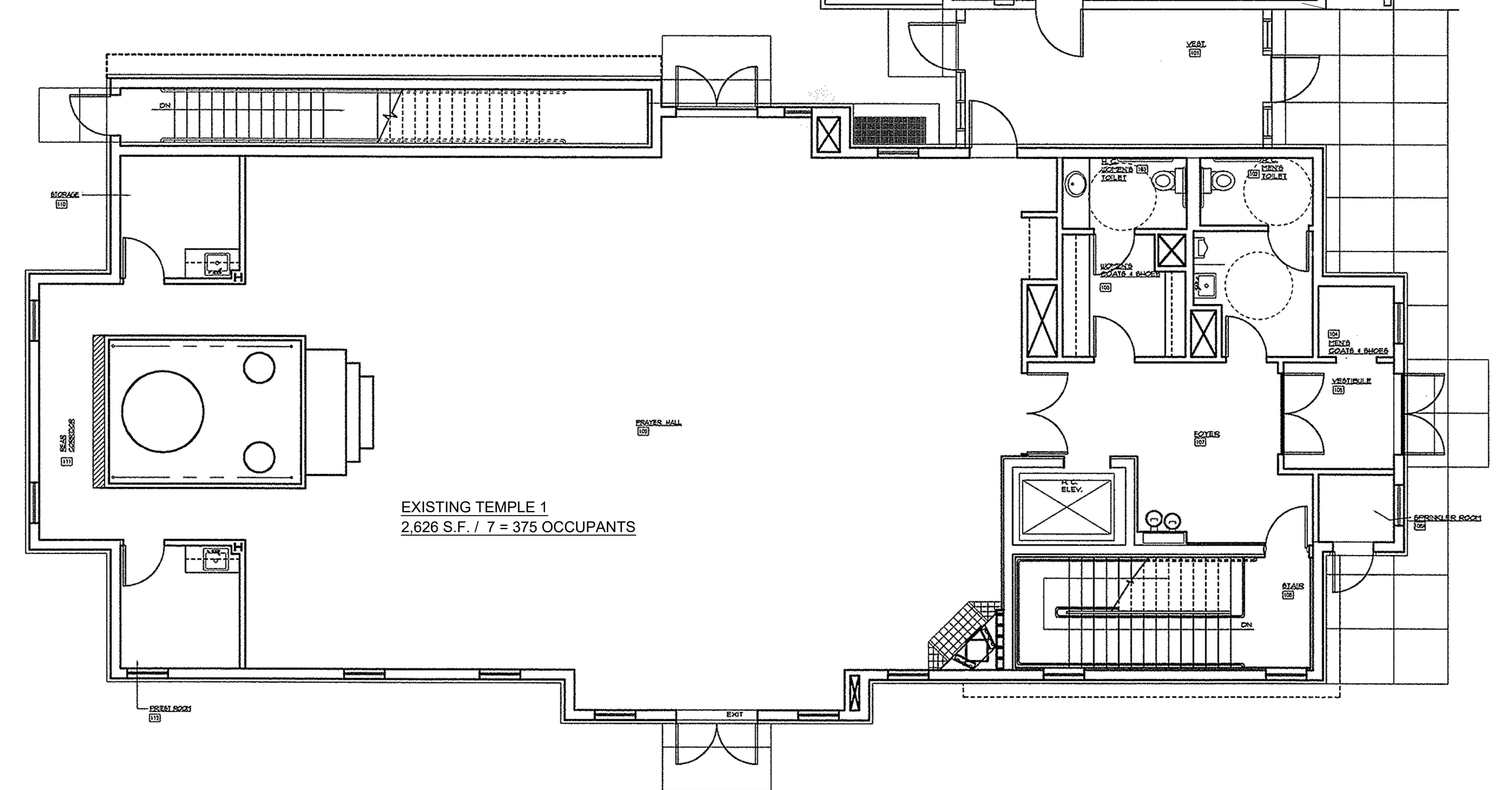


# EXISTING FLOOR PLANS

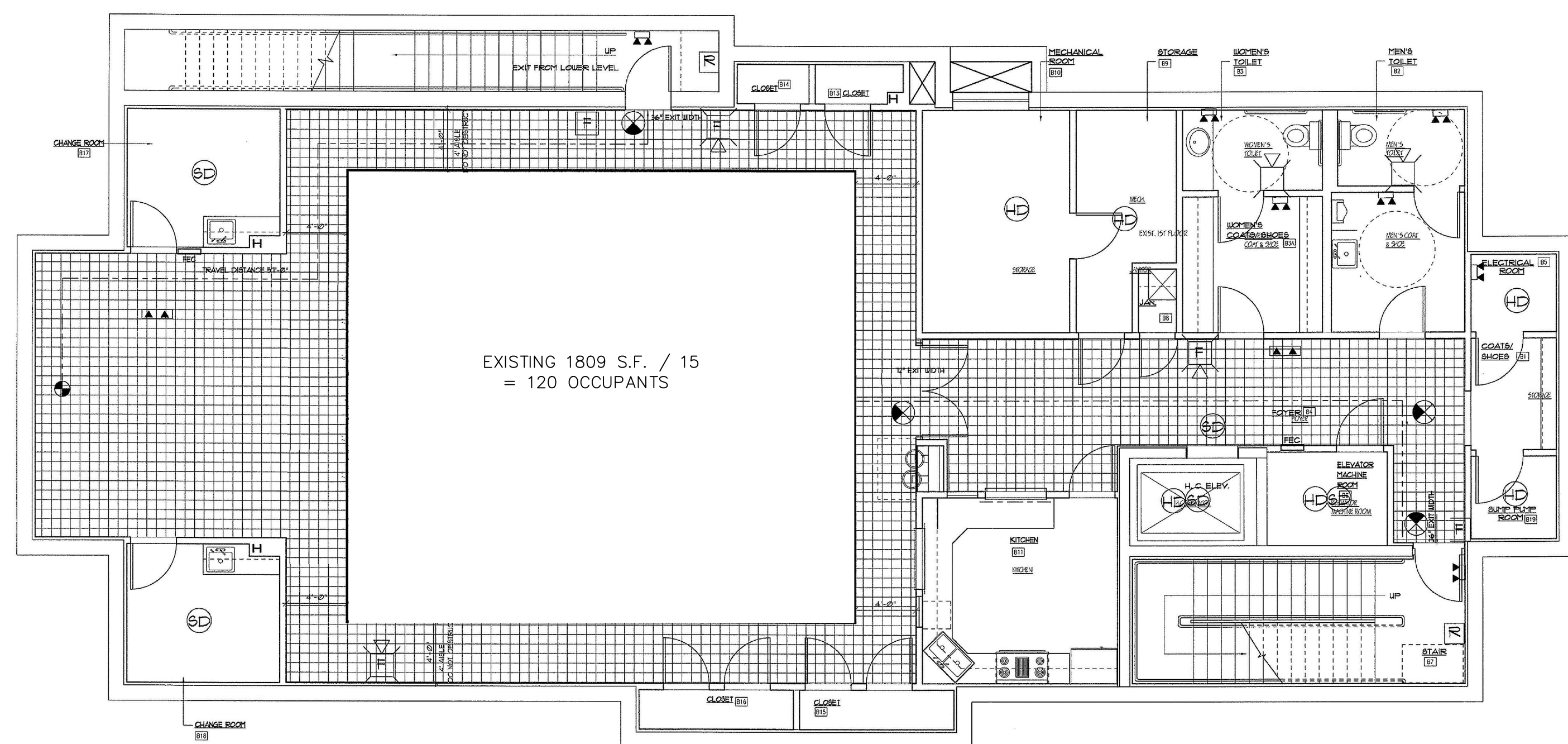


**Existing Second Floor Plan**  
 1/8"=1'-0" CLASSROOMS AND OFFICES



EXISTING TEMPLE 1  
 2,626 S.F. / 7 = 375 OCCUPANTS

**Existing First Floor Plan**  
 1/8"=1'-0"



EXISTING 1809 S.F. / 15  
 = 120 OCCUPANTS

**Existing Basement Floor Plan**  
 1/8"=1'-0"

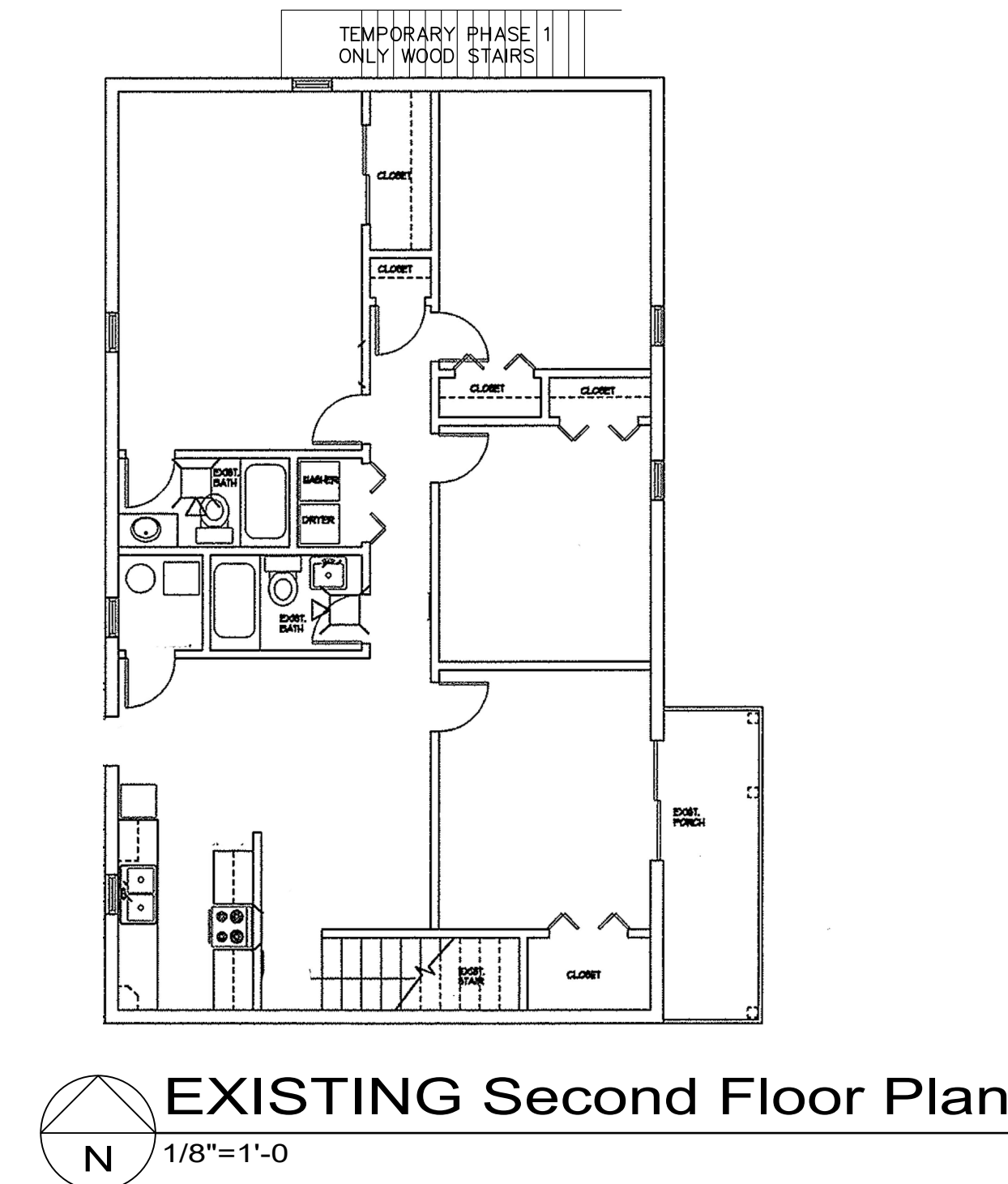
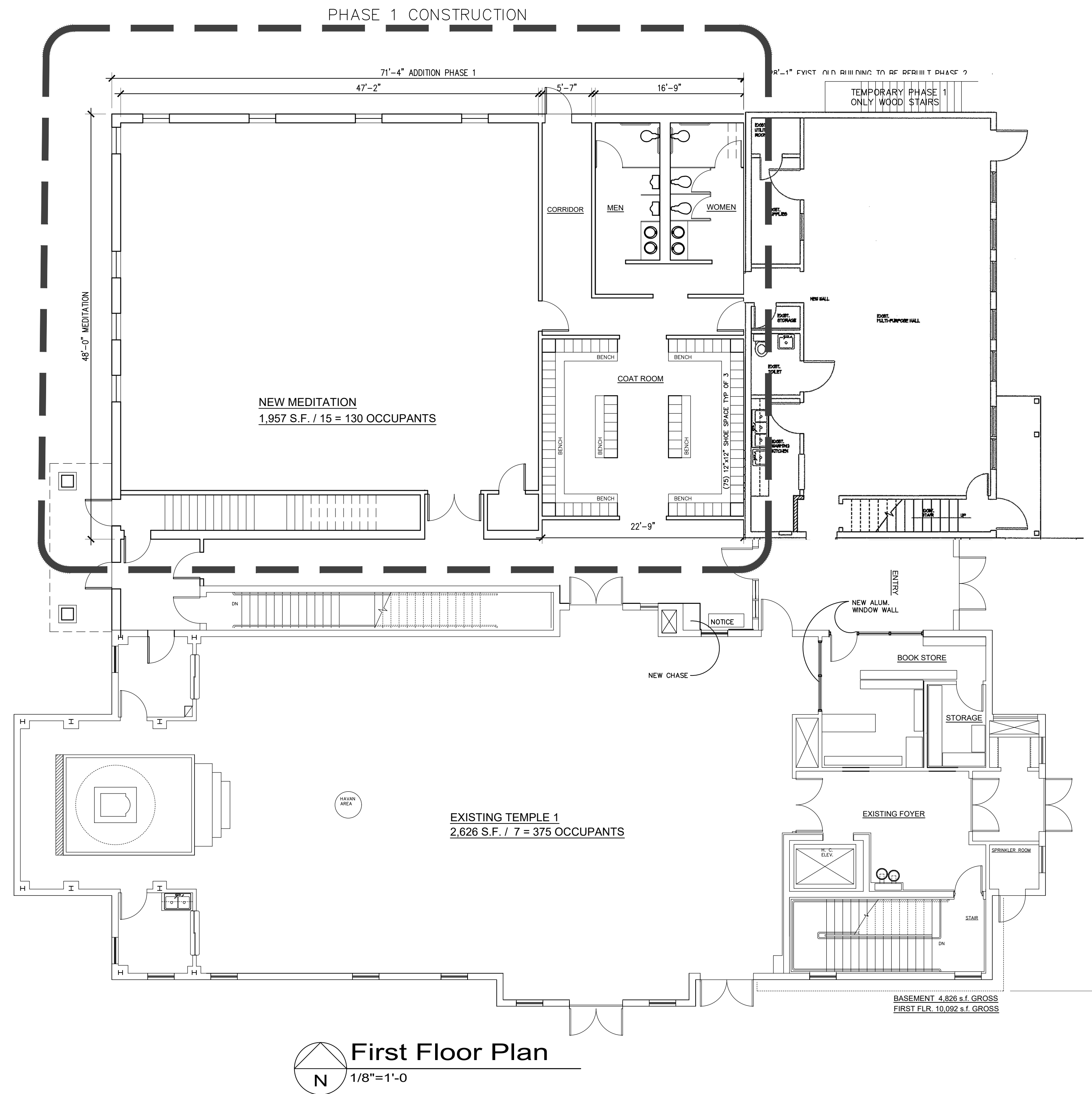
**Shri Shirdi Saibaba Mandir**  
 Addition  
 Aurora, Illinois

07.03.24

**DLR** DLRawlings, Inc.  
 Architecture + Planning  
 Illinois Professional Design Firm Registration Number: 184.002678  
 Aurora Illinois 60506 630.892.4031 d.raw@dlrawlings.com



# PHASE 1 FLOOR PLANS



EXISTING Second Floor Plan  
1/8"=1'-0"

## Shri Shirdi Saibaba Mandir Addition Aurora, Illinois

07.03.24

**DLR** DLRawlings, Inc.  
Architecture + Planning

Illinois Professional Design Firm Registration Number: 184.002678  
Aurora Illinois 60506 630.892.4031 d.raw@drawings.com

