

Drawing name: \\kimley-horn.com\KHA\CHS\CHS\168465001_Miller'sAleHouse_Aurora_IL_V2_Design\CAD\PropSheet\L1.0 - LANDSCAPE PLAN.dwg L1.0 LANDSCAPE PLAN FOR LOT 8 AND 9 OF MEIJER SUBDIVISION Mar 22, 2017 8:04am by amonacoito
 This document, together with the concepts and designs presented herein, is an instrument of service, is intended only for the specific purpose and client for which it was prepared. Reuse of any improper reliance on this document without written authorization and adaptation by Kimley-Horn and Associates, Inc. shall be without liability to Kimley-Horn and Associates, Inc.

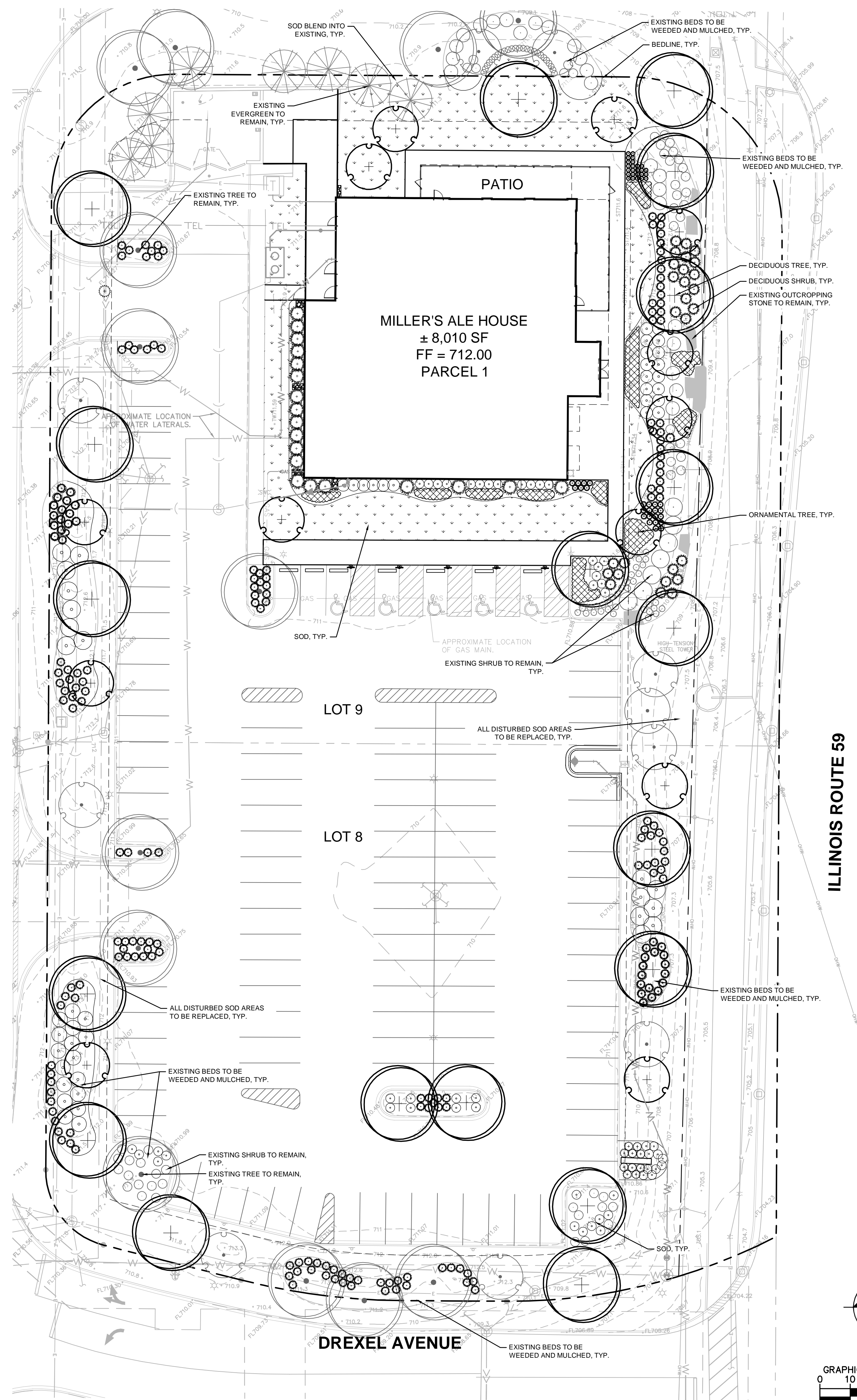
LANDSCAPE PLANS FOR LOT 8 AND 9 OF MEIJER SUBDIVISION

MILLER'S ALE HOUSE

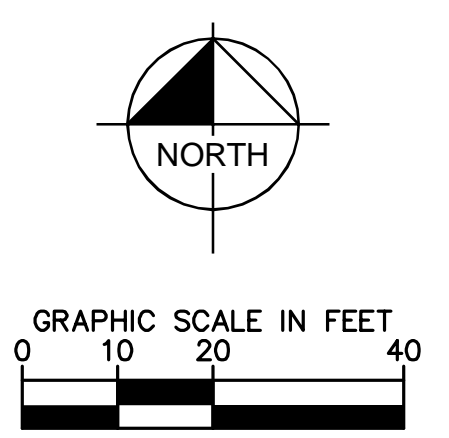
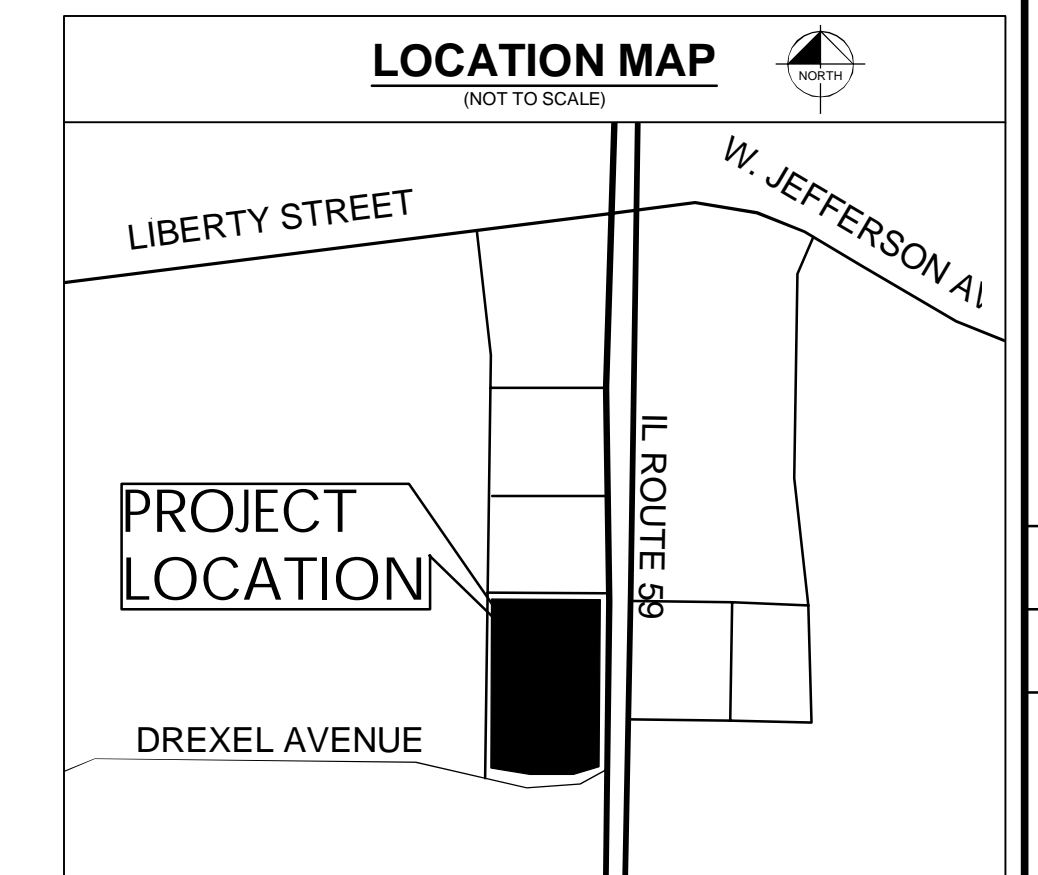
778 N. ILLINOIS ROUTE 59
AURORA, IL 60504

Landscape Data Table: CTEs Provided			
	CTE Value	Count Provided	Total CTEs Provided
Canopy Trees	1	32	32
Evergreen Trees	3	8	3
Understory Trees	3	23	8
Deciduous Shrubs	20	248	12
Evergreen Shrubs	20	255	13
Total:		566	67

NOTE: ANY EXISTING SHRUBS OR PERENNIALS NOT SHOWN ON PLAN WITH EXISTING SYMBOL, LOCATIONS APPROXIMATE, SHALL BE REMOVED. THE CONTRACTOR SHALL BE RESPONSIBLE FOR IDENTIFYING ANY DISCREPANCIES IN PLAN VS. FIELD CONDITIONS AND RESOLVING THEM WITH INPUT FROM THE LANDSCAPE ARCHITECT. THE CONTRACTOR SHALL BE RESPONSIBLE FOR REPLACING ANY PLANT MATERIAL THAT IS INAPPROPRIATELY REMOVED.



Landscape Data Table: Planting Material Key	
Note: Symbols are blackline for proposed grayscale for existing	
Canopy Trees (minimum size 2.5 caliper) Count:	32
Evergreen Trees (minimum size 6 feet) Count:	8
Understory Trees (minimum size 2.5 caliper or 8 feet if multi-stemmed) Count:	23
Evergreen Shrubs (minimum of 18 inches) Count:	255
Deciduous Shrubs (minimum of 18 inches) Count:	248
Ornamental Grasses Count:	49
Perennials Count:	283
Annuals Count:	0
Groundcover Square Footage:	0
Turf (Seeded) Square Footage:	0
Turf (Sod) Square Footage:	6032



SCALE: AS NOTED	DESIGNED BY: MEW	DRAWN BY: AWS	CHECKED BY: CLM	NO.
Kimley-Horn				AGENCY COMMENTS
© 2016 KIMLEY-HORN AND ASSOCIATES, INC. 111 W. JACKSON BOULEVARD, SUITE 700, CHICAGO, IL 60604-4445 WWW.KIMLEY-HORN.COM				AGENCY COMMENTS
FOR PERMIT				AGENCY COMMENTS
Miller's Ale House RESTAURANTS				AGENCY COMMENTS
LANDSCAPE PLAN FOR LOT 8 AND 9 OF MEIJER SUBDIVISION				AGENCY COMMENTS
MILLER'S ALE HOUSE				AGENCY COMMENTS
778 N. STATE ROUTE 59 AURORA, IL 60504				AGENCY COMMENTS
ORIGINAL ISSUE: 09/06/2016				AGENCY COMMENTS
KHA PROJECT NO. 168465001				AGENCY COMMENTS
SHEET NUMBER				AGENCY COMMENTS
L1.0				AGENCY COMMENTS