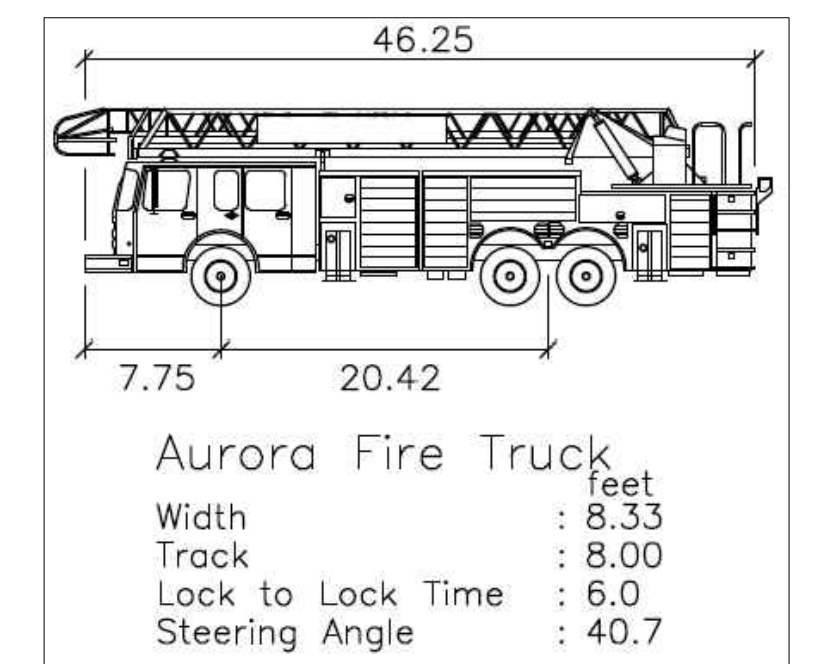
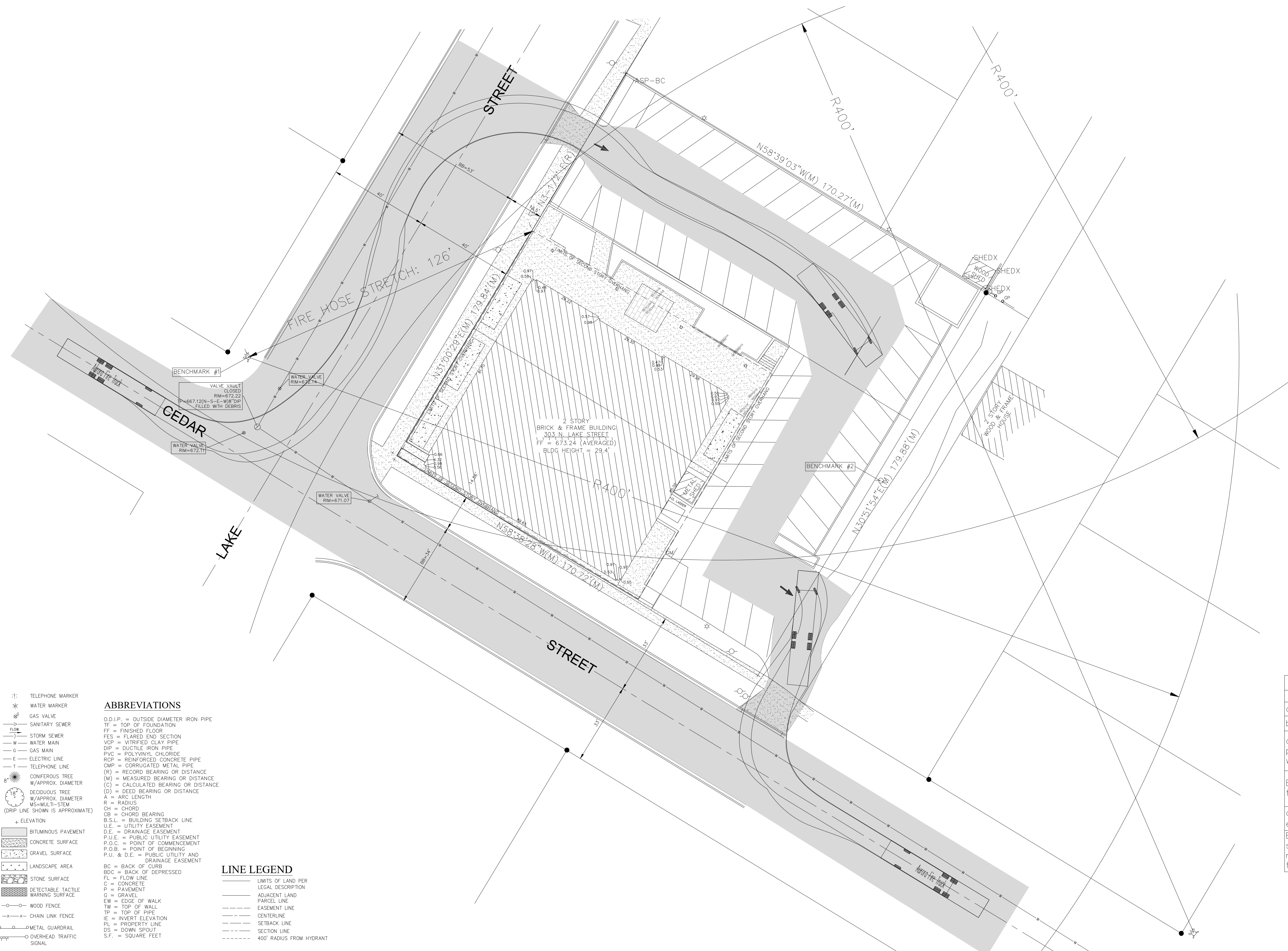
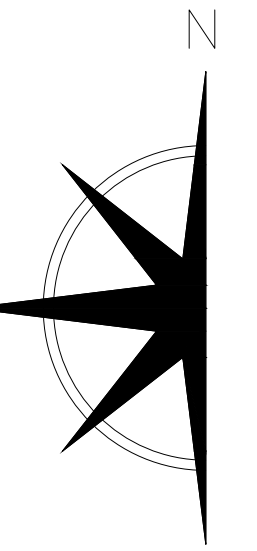
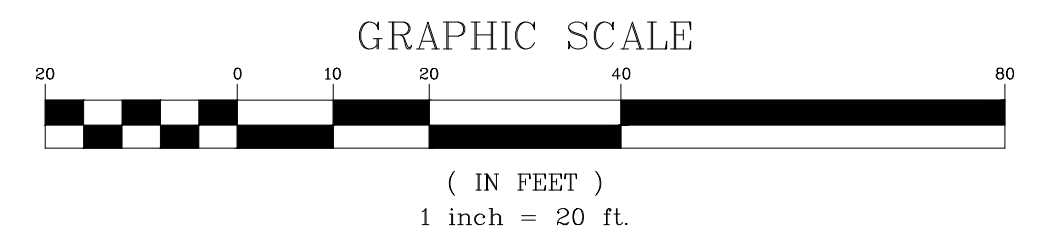


FIRE ACCESS PLAN FOR MINISTERIOS ADONAI



Description	Value	Unit
a) Building Height	29.4	feet
b) Square footage of each building	18,787	square feet
c) Building fire suppression information including any proposed use of sprinkler systems, fire alarm systems, whether fire extinguishers are needed.		
Building shall include smoke detection and fire alarms throughout for Maximum 300 occupants		
d) General description of business to be conducted within each building including"		
Business to be conducted include Church Services in the sanctuary, classroom education, office use. There will be no rack storage nor storage of combustible materials over twelve feet in height.		



- LEGEND**
- FOUND 7/8" O.D.I.P. UNLESS OTHERWISE NOTED (HELD LOCATION) (CONTROL POINT)
 - CONCRETE MONUMENT
 - ⊕ CROSS IN CONCRETE MANHOLE
 - ⊕ STORM STRUCTURE
 - ⊕ SANITARY MANHOLE
 - ⊕ VALVE VAULT
 - ⊕ FIRE HYDRANT
 - ⊕ FLARED END SECTION
 - ⊕ UTILITY POLE
 - ⊕ GUY POLE
 - ⊕ OVERHEAD TRAFFIC SIGNAL
 - ⊕ TRAFFIC SIGNAL MANHOLE
 - OHV+ OVERHEAD WIRES
 - ⊕ GAS METER
 - ⊕ ELECTRIC METER
 - ⊕ TRANSFORMER PAD
 - ⊕ TELEPHONE PEDESTAL
 - ⊕ ELECTRIC PEDESTAL
 - ⊕ TELEPHONE MANHOLE
 - ⊕ CABLE TELEVISION PEDESTAL
 - ⊕ ELECTRIC MANHOLE
 - ⊕ VALVE BOX
 - ⊕ B/BOX
 - ⊕ SIGN
 - ⊕ BOLLARD POLE
 - ⊕ LIGHT
 - ⊕ LIGHT POLE
 - ⊕ HAND HOLE
 - ⊕ MAILBOX
 - ⊕ GAS MARKER
 - ⊕ ELECTRIC MARKER
- ABBREVIATIONS**
- O.D.I.P. = OUTSIDE DIAMETER IRON PIPE
 - TF = TOP OF FOUNDATION
 - FF = FINISHED FLOOR
 - FES = FLARED END SECTION
 - VCP = VITRIFIED CLAY PIPE
 - DIP = DUCTILE IRON PIPE
 - PVC = POLYVINYL CHLORIDE
 - RCIP = REINFORCED CONCRETE PIPE
 - CMP = CORRUGATED METAL PIPE
 - (R) = RECORD BEARING OR DISTANCE
 - (M) = MEASURED BEARING OR DISTANCE
 - (C) = CALCULATED BEARING OR DISTANCE
 - (D) = DEED BEARING OR DISTANCE
 - A = ARC LENGTH
 - R = RADIUS
 - CH = CHORD
 - CB = CHORD BEARING
 - B.S.L. = BUILDING SETBACK LINE
 - U.E. = UTILITY EASEMENT
 - D.E. = DRAINAGE EASEMENT
 - P.U.E. = PUBLIC UTILITY EASEMENT
 - P.O.C. = POINT OF COMMENCEMENT
 - P.O.B. = POINT OF BEGINNING
 - P.U. & D.E. = PUBLIC UTILITY AND DRAINAGE EASEMENT
 - BC = BACK OF CURB
 - BDC = BACK OF DEPRESSED
 - FL = FLOW LINE
 - C = CONCRETE
 - P = PAVEMENT
 - G = GRAVEL
 - EW = EDGE OF WALK
 - TW = TOP OF WALL
 - TP = TOP OF PIPE
 - IE = INVERT ELEVATION
 - PL = PROPERTY LINE
 - DS = DOWN SPOUT
 - S.F. = SQUARE FEET
- LINE LEGEND**
- LIMITS OF LAND PER LEGAL DESCRIPTION
 - ADJACENT LAND
 - PARCEL LINE
 - EASEMENT LINE
 - CENTERLINE
 - SETBACK LINE
 - SECTION LINE
 - 400' RADIUS FROM HYDRANT

PREPARED FOR:
MINISTERIOS ADONAI
 303 N. LAKE STREET
 AURORA, IL

PREPARED BY:
ESM CIVIL SOLUTIONS, LLC
 CIVIL ENGINEERING—LAND ENTITLEMENT—PROJECT FEASIBILITY
 1315 Macom Drive — Suite 205 Naperville Illinois 60154
 o: 630-300-0933 c: 630-624-0520

REVISIONS			REVISIONS		
NO.	DATE	DESCRIPTION	NO.	DATE	DESCRIPTION
1	3-21-16	REVISED PER CITY REVIEW COMMENTS	---	---	---
---	---	---	---	---	---
---	---	---	---	---	---
---	---	---	---	---	---

FIRE ACCESS PLAN FOR MINISTERIOS ADONAI
AURORA, ILLINOIS

FILE NAME:MA-AUR	DSGN. BY: MJS	JOB NO: ----	FLD. BK: ----	SHEET NO. 1 of 1
DISC NUM: ----	DRN BY: MJS	DATE: 3-7-16	SCALE: 1"=20'	