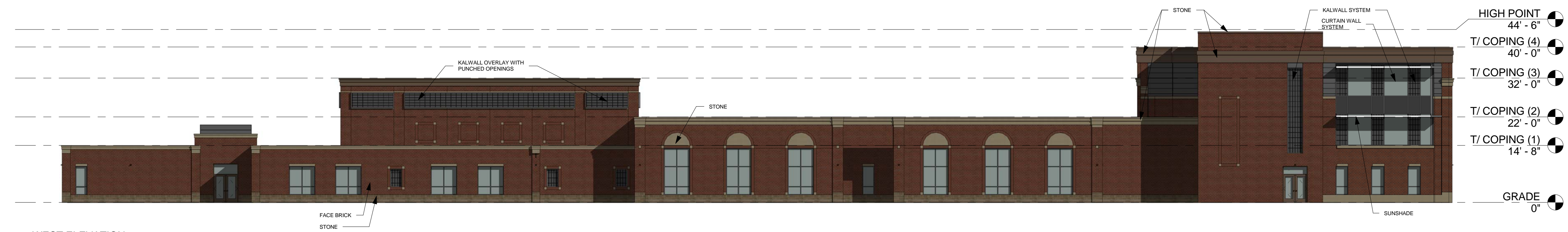


ELEVATIONS



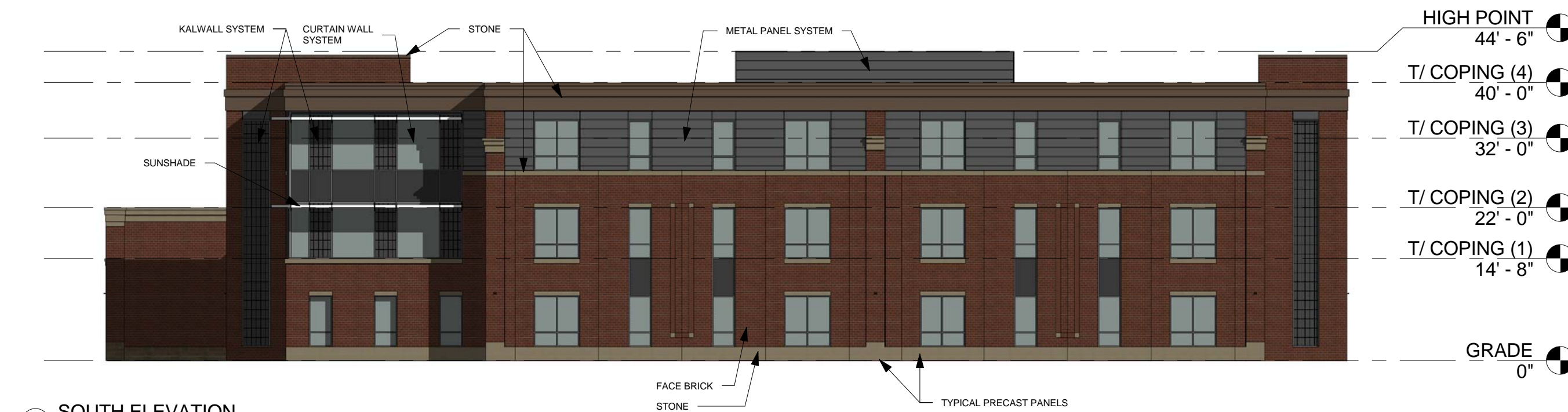
1 EAST ELEVATION
1/16" = 1'-0"



2 WEST ELEVATION
1/16" = 1'-0"



3 NORTH ELEVATION
1/16" = 1'-0"



4 SOUTH ELEVATION
1/16" = 1'-0"

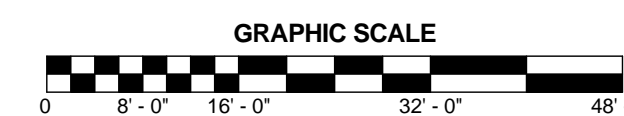


5 SIGNAGE DETAIL #1
1/4" = 1'-0"

ELEVATION DATA TABLE: ELEVATIONS			
Description	Value	Unit	
a) Building Height	44'-6"	feet	
b) Grade Elevation	686.00	feet	
c) Building Square Footage by Floor	5,530	Square feet	
	43,122	Square feet	
	11,643	Square feet	
d) Building Square Footage	71,938 (total)	Square feet	

SIGNAGE DATA TABLE: GROUND SIGNAGE				
Ground Sign #	Description	Value	Unit	
1	i) Length of street frontage- on which sign is located		feet	
	ii) Width of Sign Face		feet	
	iii) Height of Sign Face		feet	
	iv) Square Footage of Sign Face		Square feet	
	v) Height of Sign (overall)		feet	
	vi) Type of Sign			
	vii) Type of Sign Base			
	viii) Is there a digital display			
	If yes then - Location of Digital Display on the sign			
		Height of digital Display		
	Width of Digital Display			
	Square footage of Digital Display			
	Percent of Digital Display Sign Coverage			

SIGNAGE DATA TABLE: WALL SIGNAGE			
Wall Sign #	Description	Value	Unit
1	i) Width of Facade- on which Sign is Located	357' 10"	feet
	ii) Height of Facade- on which sign is located	44' 6"	feet
	iii) Square footage of Facade- on which Sign is located	9,891	Square feet
	iv) Width of Sign Face	22' 8"	feet
	v) Height of Sign Face	2' 8"	feet
	vi) Square Footage of Sign Face	60.44	Square feet
	Percent of Sign Coverage- Facade on which Sign is Located	0.61%	Percent



NEW HILL ELEMENTARY

At:
724 PENNSYLVANIA AVENUE
AURORA, IL 60506

For WEST AURORA SCHOOL DISTRICT #129

80 S RIVER ST
AURORA, IL 60506

Copyright 2015 StudioGC, Inc.

NO. ISSUED FOR: DATE
SPECIAL USE SUBMITTAL 10/22/15

BUILDING AND SIGNAGE ELEVATIONS

Project: 15060