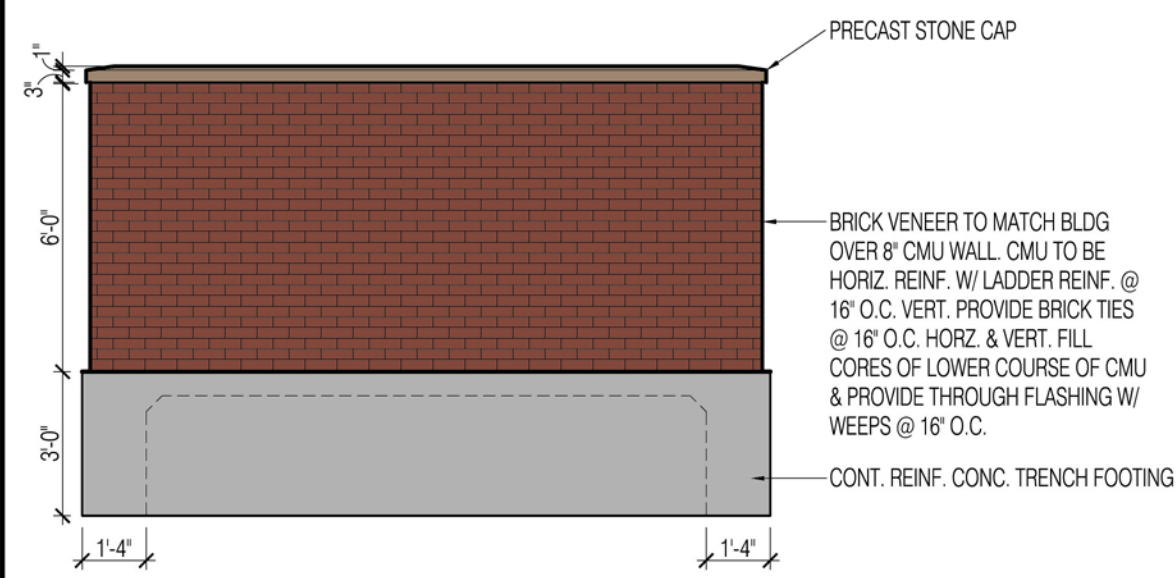
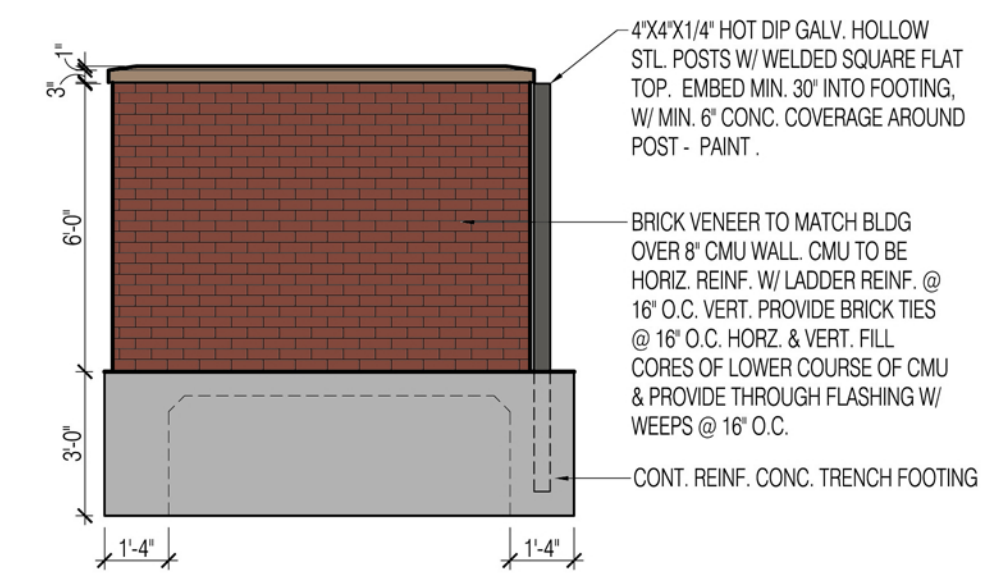


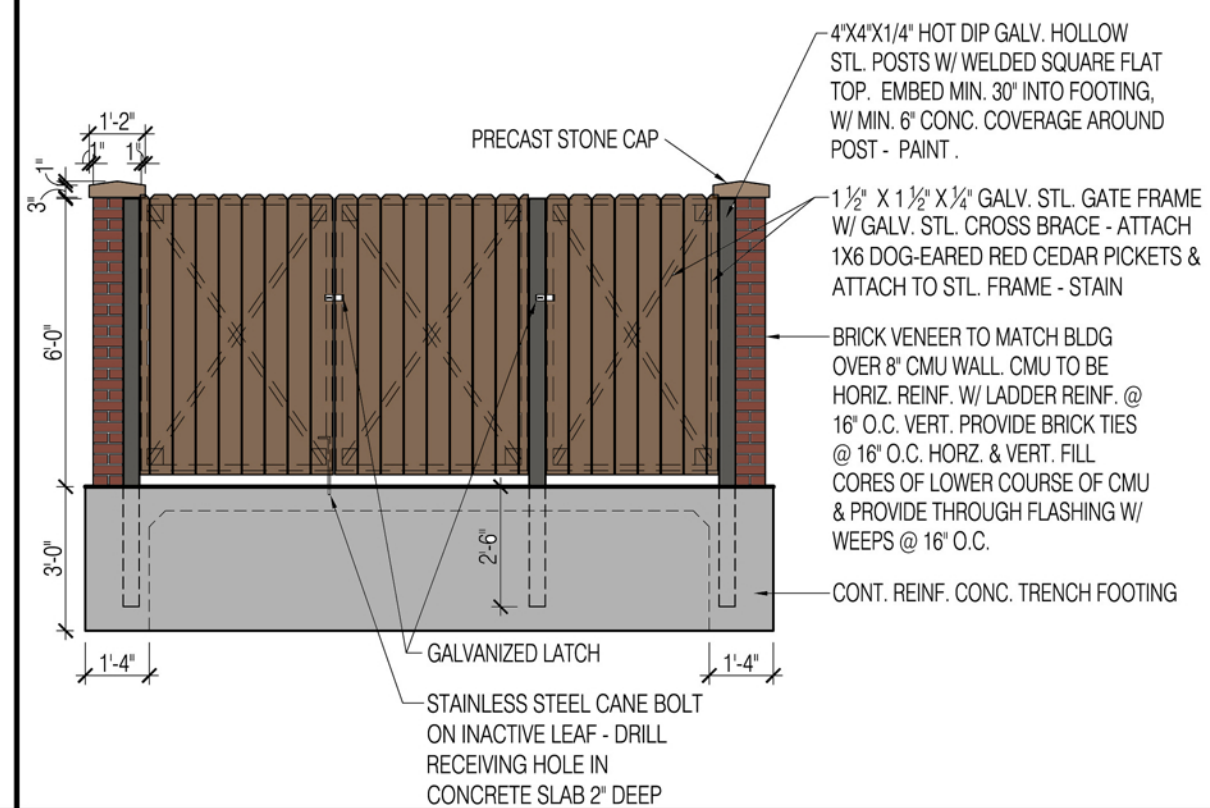
ELEVATIONS



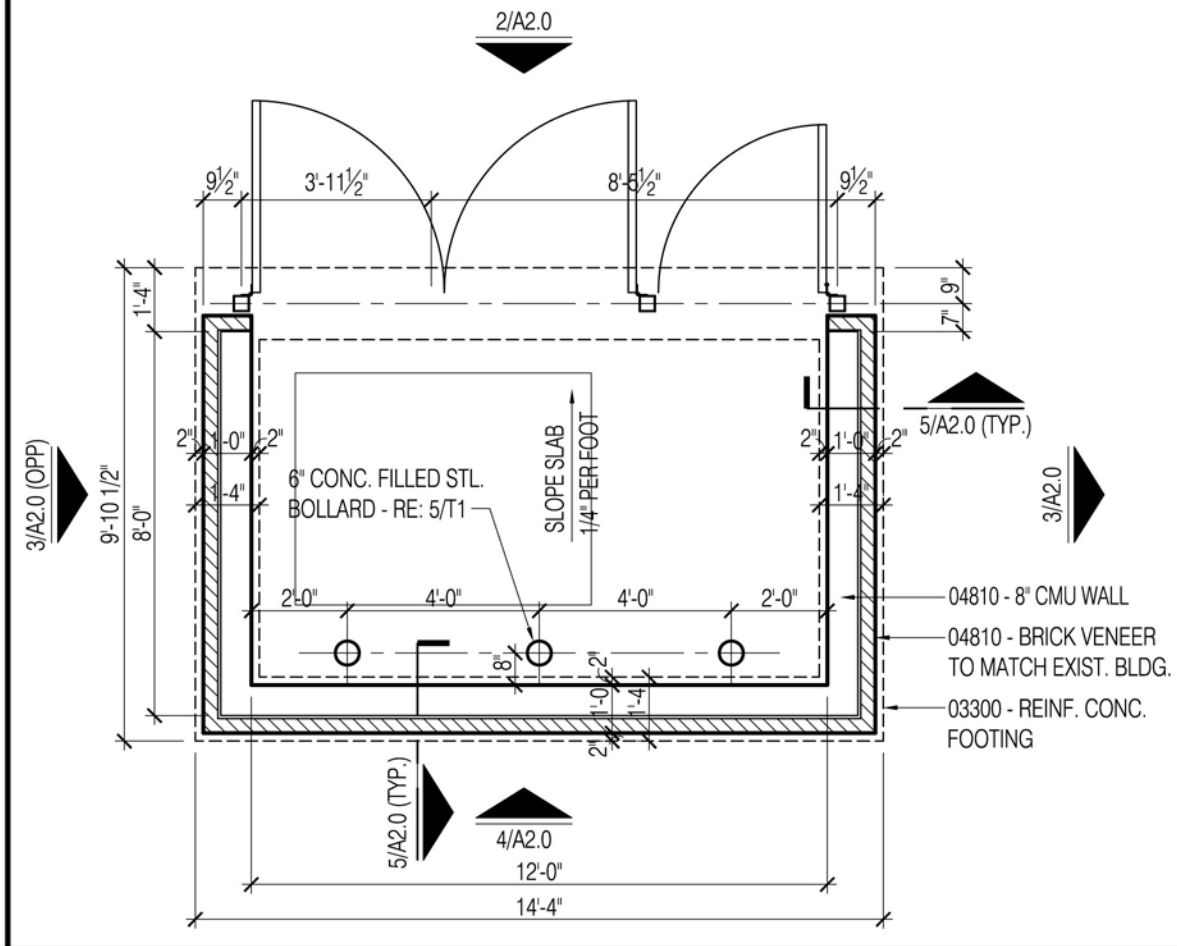
4 TRASH ENCLOSURE ELEV - REAR
1/4" = 1'-0"



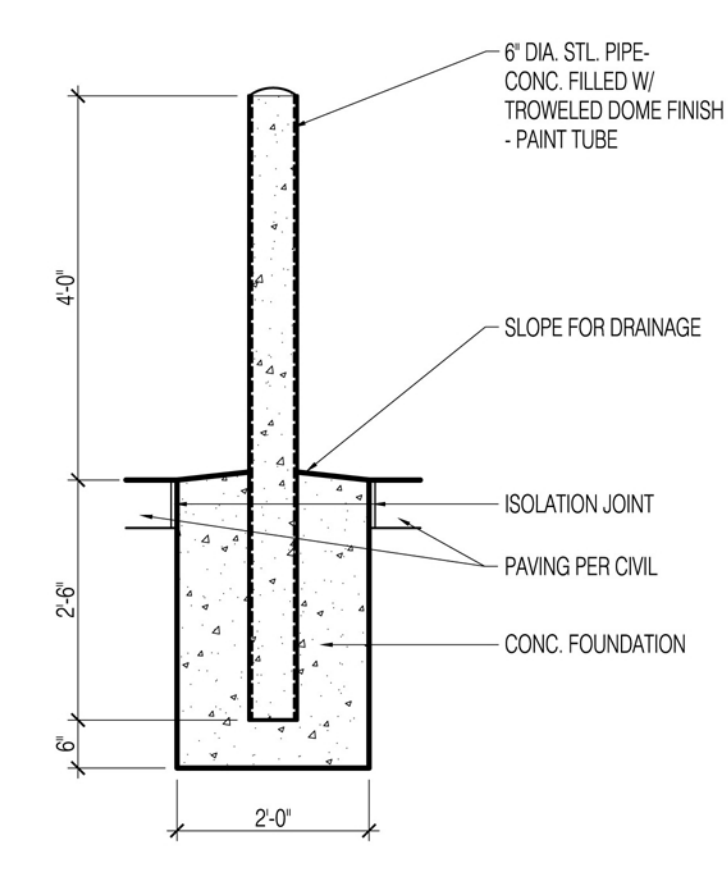
3 TRASH ENCLOSURE ELEV - SIDE
1/4" = 1'-0"



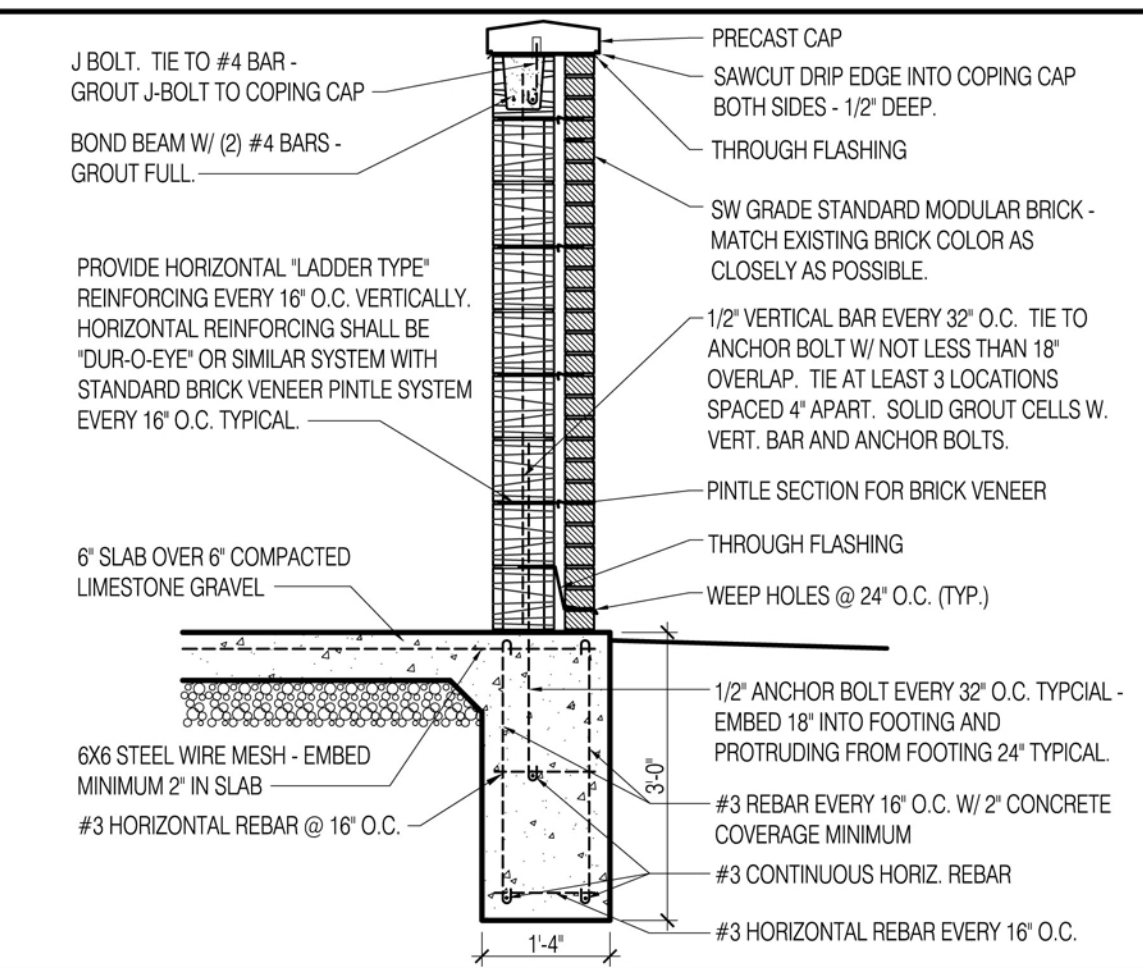
2 TRASH ENCLOSURE ELEV - FRONT
1/4" = 1'-0"



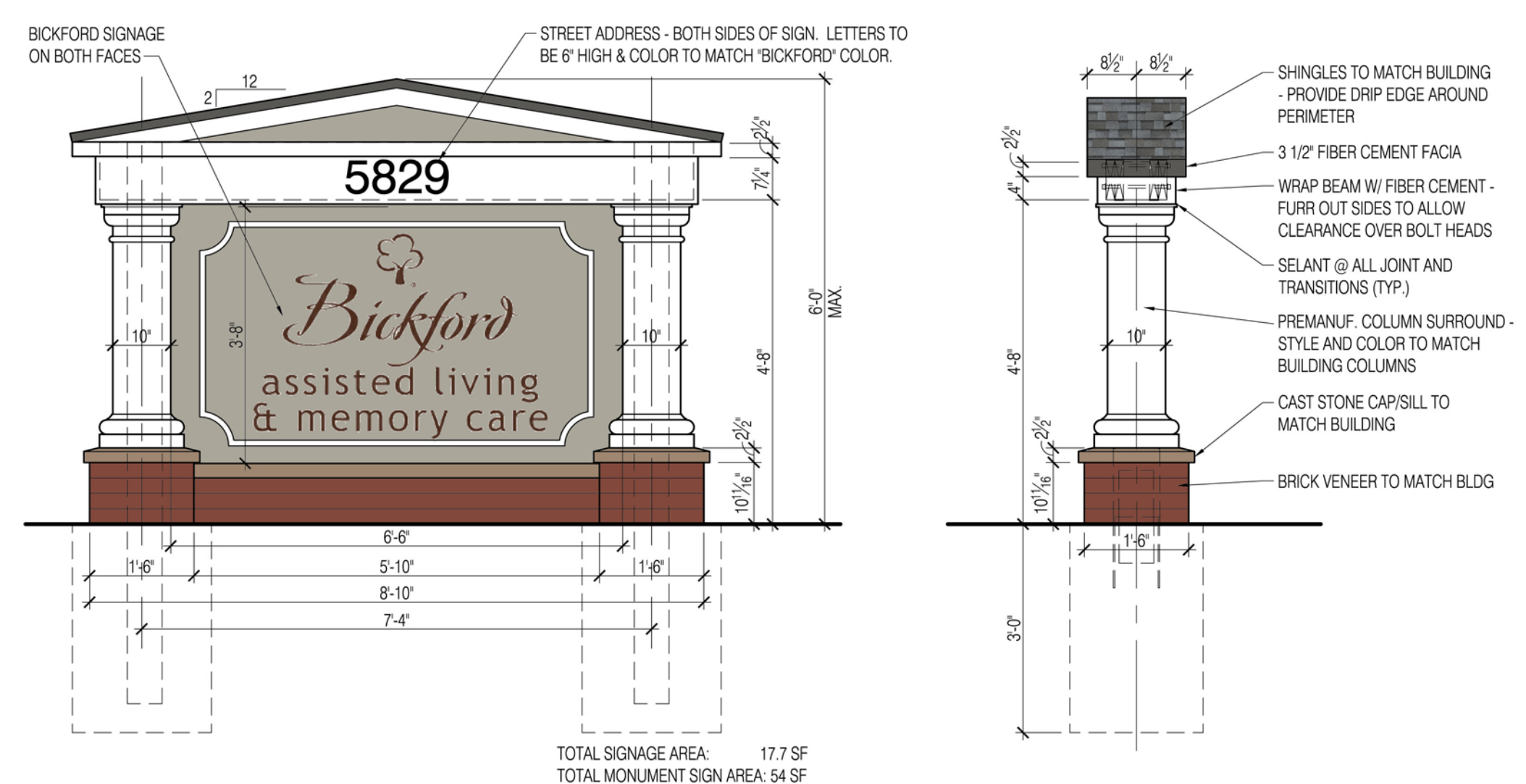
1 TRASH ENCLOSURE PLAN
1/4" = 1'-0"



6 BOLLARD DETAIL
1/2" = 1'-0"



5 TRASH ENCLOSURE SECTION
1/2" = 1'-0"

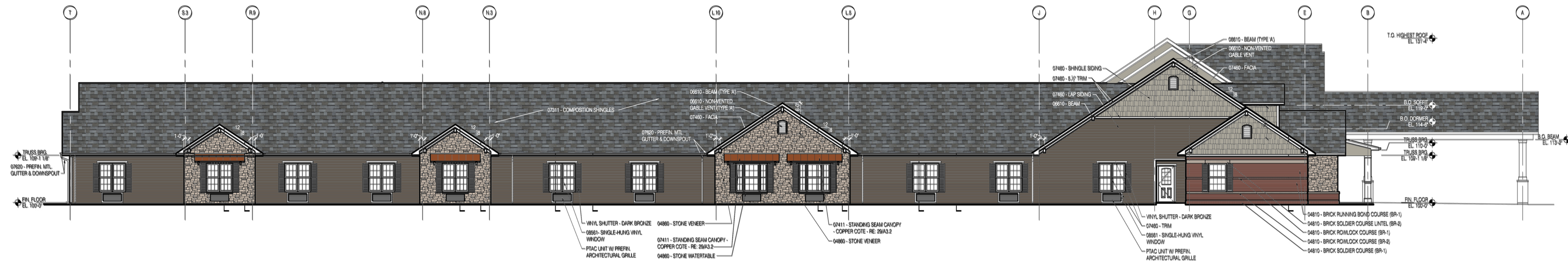


8 MONUMENT SIGN ELEVATIONS
1/2" = 1'-0"

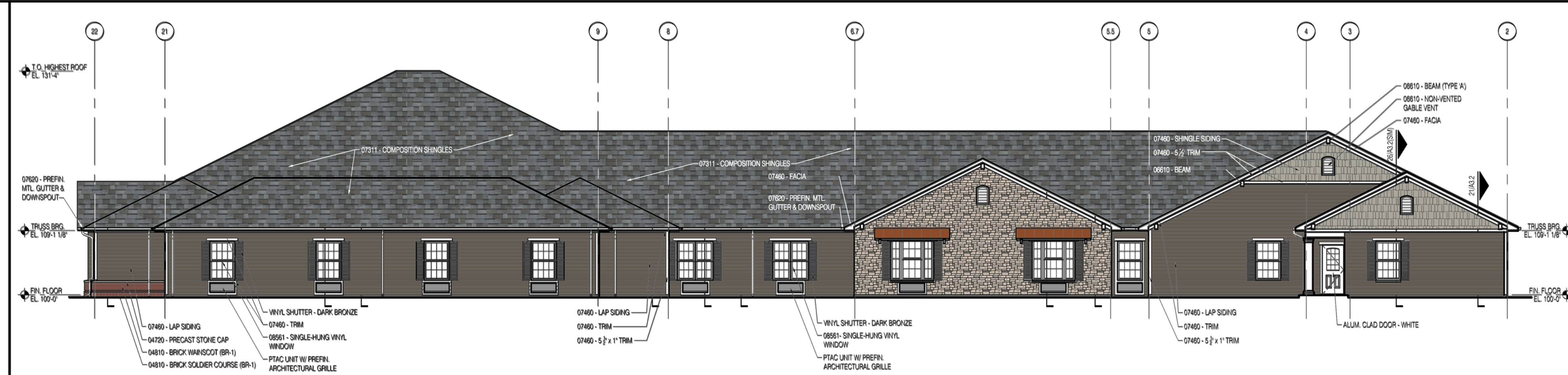
GROUND SIGNAGE DATA TABLE: GROUND SIGNAGE

GROUND SIGN #	DESCRIPTION	VALUE	UNIT
i)	LENGTH OF STREET FRONTAGE - ON WHICH SIGN IS LOCATED	595	FEET
ii)	WIDTH OF SIGN FACE	5'-8"	FEET
iii)	HEIGHT OF SIGN FACE	3'-2"	FEET
iv)	SQUARE FOOTAGE OF SIGN FACE	17.7	SQUARE FEET
v)	HEIGHT OF SIGN (OVERALL)	6	FEET
vi)	TYPE OF SIGN	MONUMENT	
vii)	TYPE OF SIGN BASE	BRICK	
viii)	IS THERE A DIGITAL DISPLAY	NO	

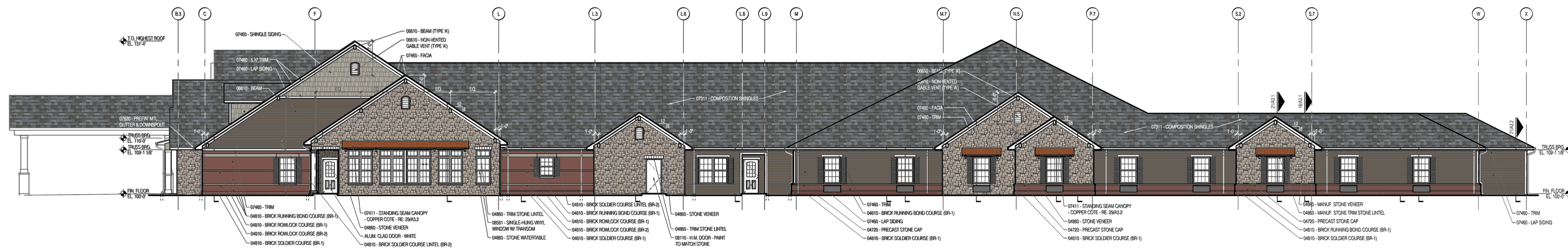
7 SIGNAGE DATA TABLE: GROUND
=



4 SIDE (SOUTH) ELEVATION
3/32" = 1'-0"

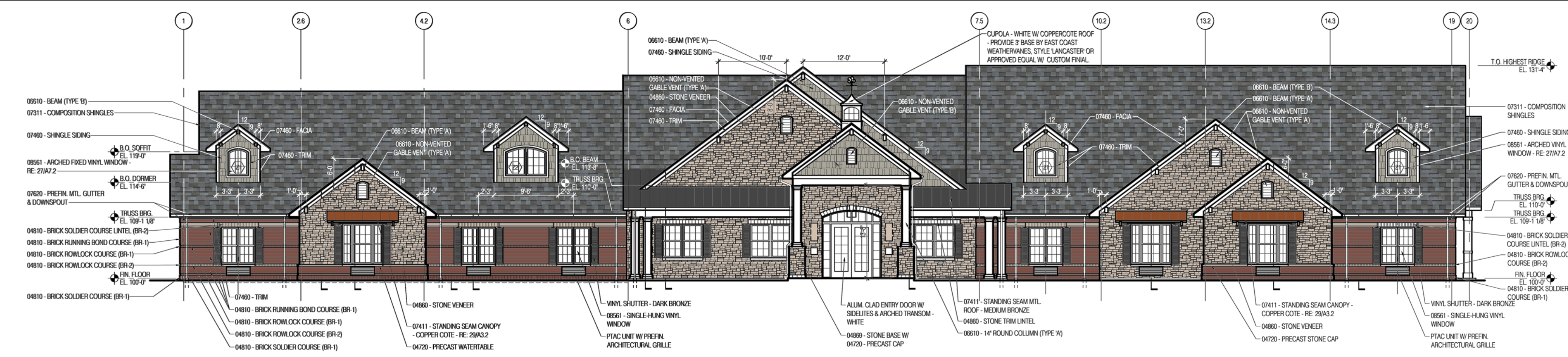


3 REAR (WEST) ELEVATION
3/32" = 1'-0"



2 SIDE (NORTH) ELEVATION
3/32" = 1'-0"

ELEVATION DATA TABLE: ELEVATIONS		
DESCRIPTION	VALUE	UNIT
II. BUILDING HEIGHT	31'-0"	FEET (MAX)
III. GRADE ELEVATION	674.5	FEET
IV. BUILDING SQUARE FOOTAGE BY FLOOR	38,200	SQUARE FEET (1 FLOOR)
V. BUILDING SQUARE FOOTAGE	38,200	SQUARE FEET



1 FRONT (EAST) ELEVATION
3/32" = 1'-0"

ELEVATION DATA TABLE: ELEVATIONS

Kazmaier & Associates, LLC
Architects

Owner/Developer: NHI Bickford RE, LLC
13795 Marlton Road, Olathe, Kansas 66062
Site Plan Designer: LORAX Design Group
8021 Santa Fe #200, Overland Park, KS 66204

Bickford of Aurora, IL
NWC Orchard Road & Galena Blvd.
Aurora, Illinois

REVISION	
△ ADDENDUM #1	8/7/2013
△ ASI #1	1/7/2014

PROJECT NO: SL-1504
DATE: June 1, 2015

Elevations

A2.1

MHDC FIRM COMMITMENT PKG.
PERMIT SET

13795 S. Marlton Rd | Olathe, Kansas 66062 | P 913.254.2246 | F 913.254.2245