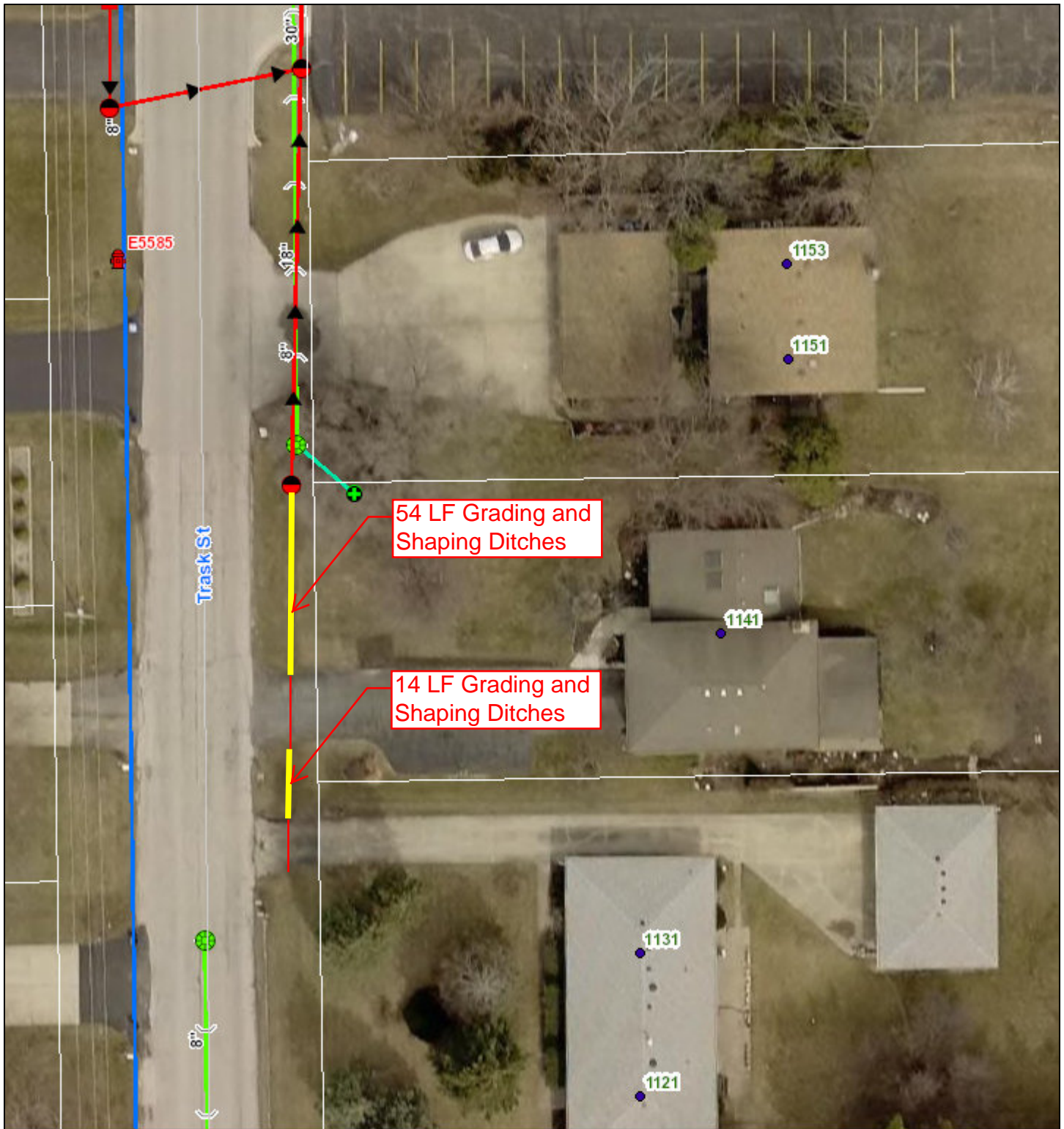


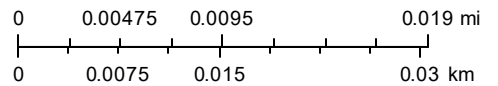
2018 Ditch Grading Project - Location 1: 1141 Trask St



August 16, 2018

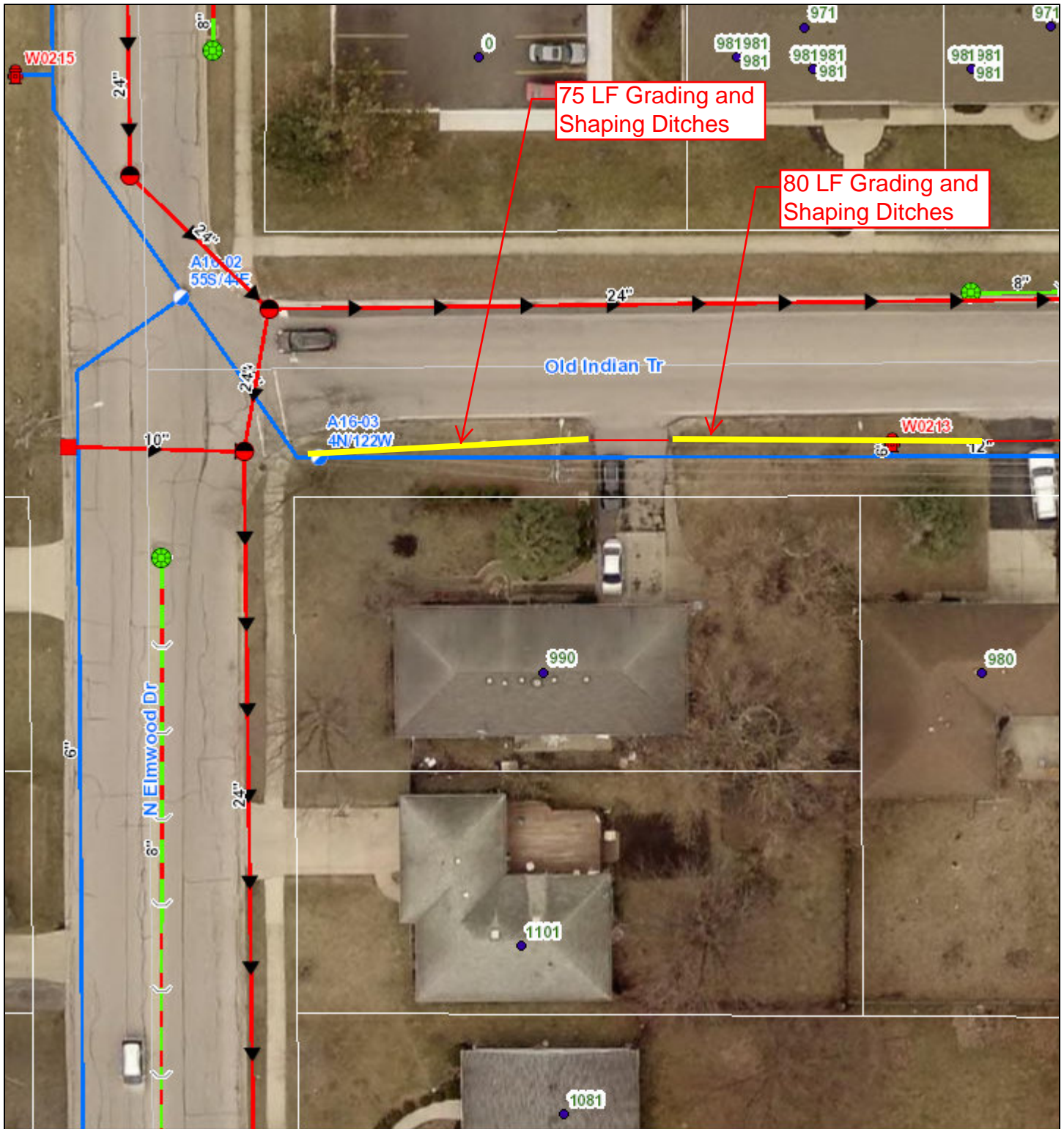
1:564

- | | | |
|--------------------|----------------|-------------------|
| Addr Pts | Naperville | Yorkville |
| Centerlines | North Aurora | COA Owned Parcels |
| City Limits | Oswego | Parcels |
| Batavia | Sugar Grove | Fox River |
| City of Aurora | Unincorporated | |
| Montgomery | Warrenville | |



The City of Aurora GIS and Engineering Department.
 Source: Esri, DigitalGlobe, GeoEye, Earthstar Geographics, CNES/Airbus DS, USDA, USGS, AeroGRID, IGN, and the GIS User Community

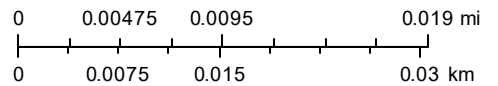
2018 Ditch Grading Project - Location 2: 990 Old Indian Trail



August 16, 2018

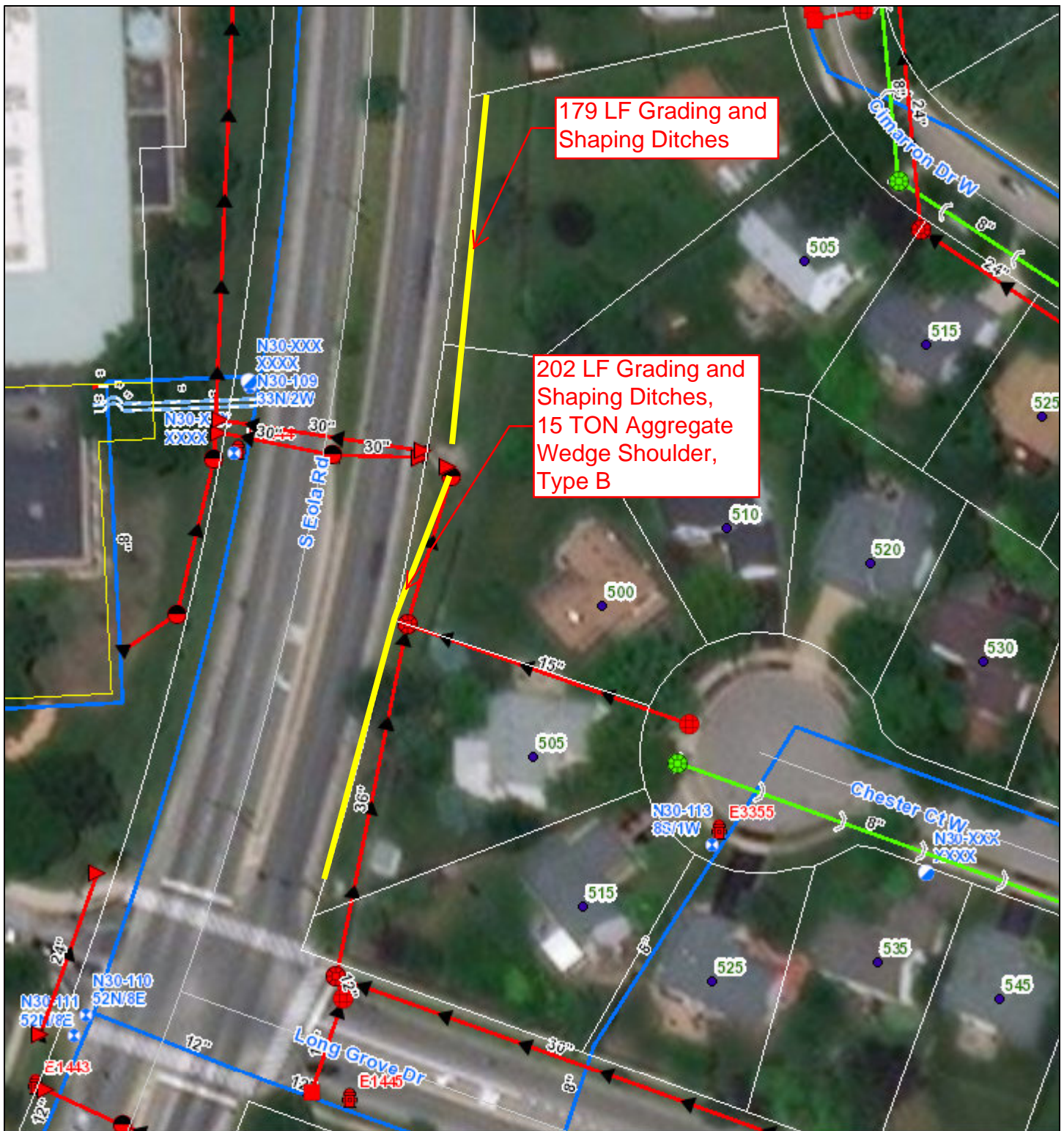
1:564

- Addr Pts
- Centerlines
- City Limits**
- Batavia
- City of Aurora
- Montgomery
- Naperville
- North Aurora
- Oswego
- Sugar Grove
- Unincorporated
- Warrenville
- Yorkville
- COA Owned Parcels
- Parcels
- Fox River



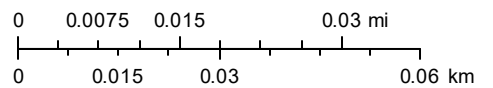
The City of Aurora GIS and Engineering Department.
 Source: Esri, DigitalGlobe, GeoEye, Earthstar Geographics, CNES/Airbus
 DS, USDA, USGS, AeroGRID, IGN, and the GIS User Community

2018 Ditch Grading Project - Location 3: South Eola Road



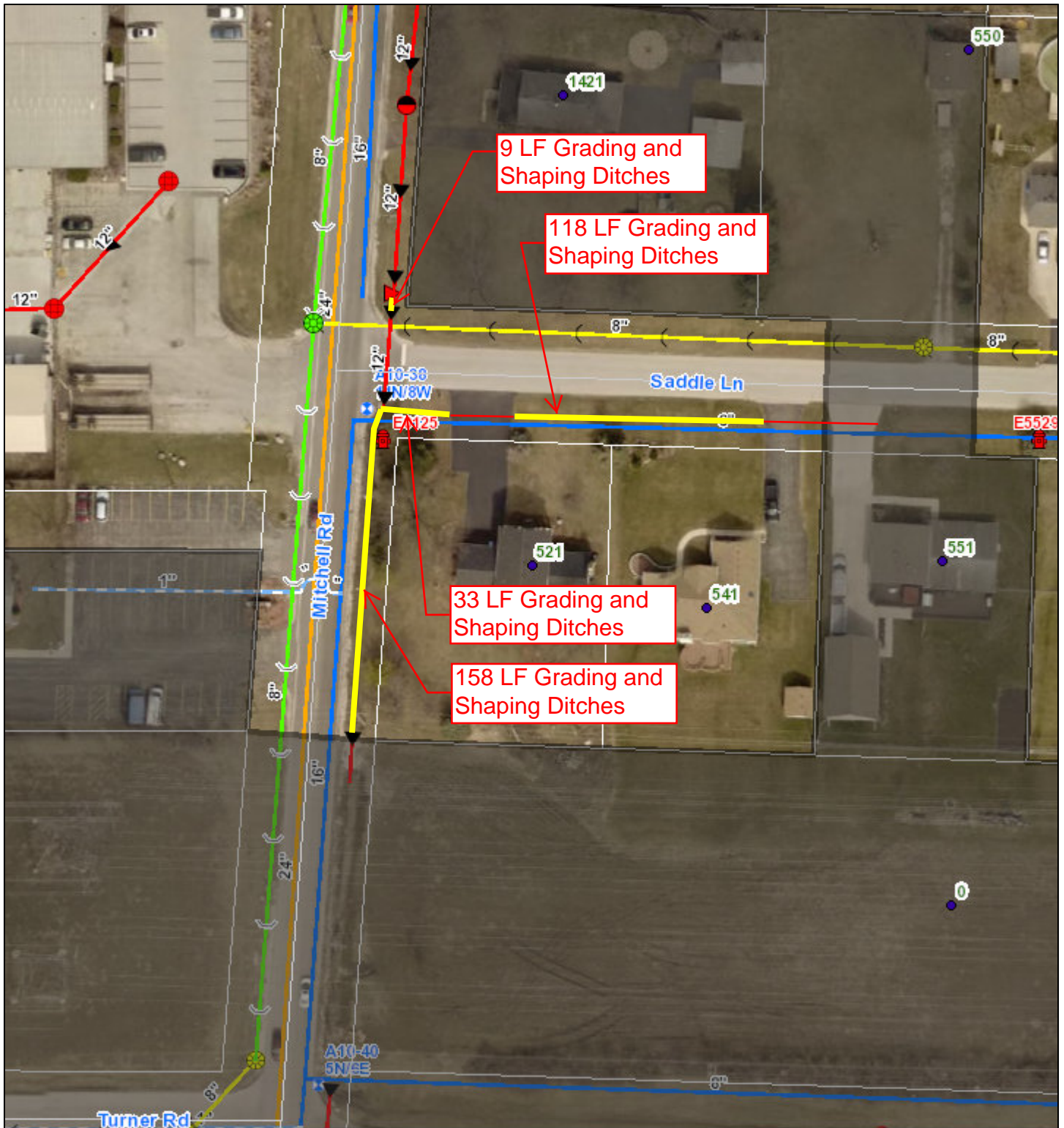
August 17, 2018

1:1,128



The City of Aurora GIS and Engineering Department.
 Source: Esri, DigitalGlobe, GeoEye, Earthstar Geographics, CNES/Airbus
 DS, USDA, USGS, AeroGRID, IGN, and the GIS User Community

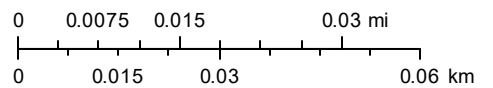
2018 Ditch Grading Project - Location 4: 521 Saddle Lane



August 17, 2018

1:1,128

- | | | |
|--------------------|------------------|---------------------|
| ● Addr Pts | ■ Naperville | ■ Yorkville |
| — Centerlines | ■ North Aurora | ■ COA Owned Parcels |
| City Limits | ■ Oswego | ■ Parcels |
| ■ Batavia | ■ Sugar Grove | ■ Fox River |
| ■ City of Aurora | ■ Unincorporated | |
| ■ Montgomery | ■ Warrenville | |



The City of Aurora GIS and Engineering Department.
 Source: Esri, DigitalGlobe, GeoEye, Earthstar Geographics, CNES/Airbus
 DS, USDA, USGS, AeroGRID, IGN, and the GIS User Community