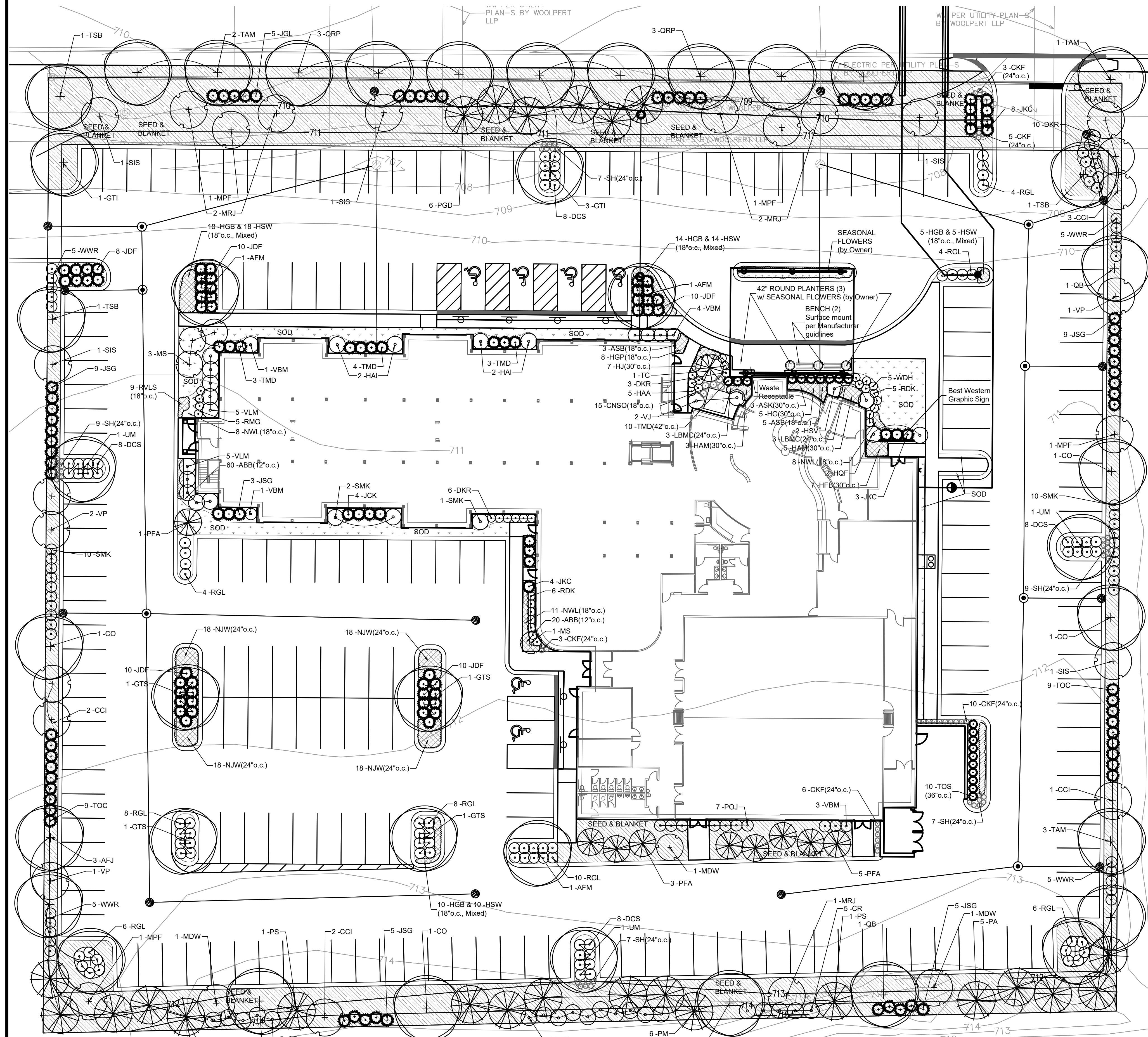


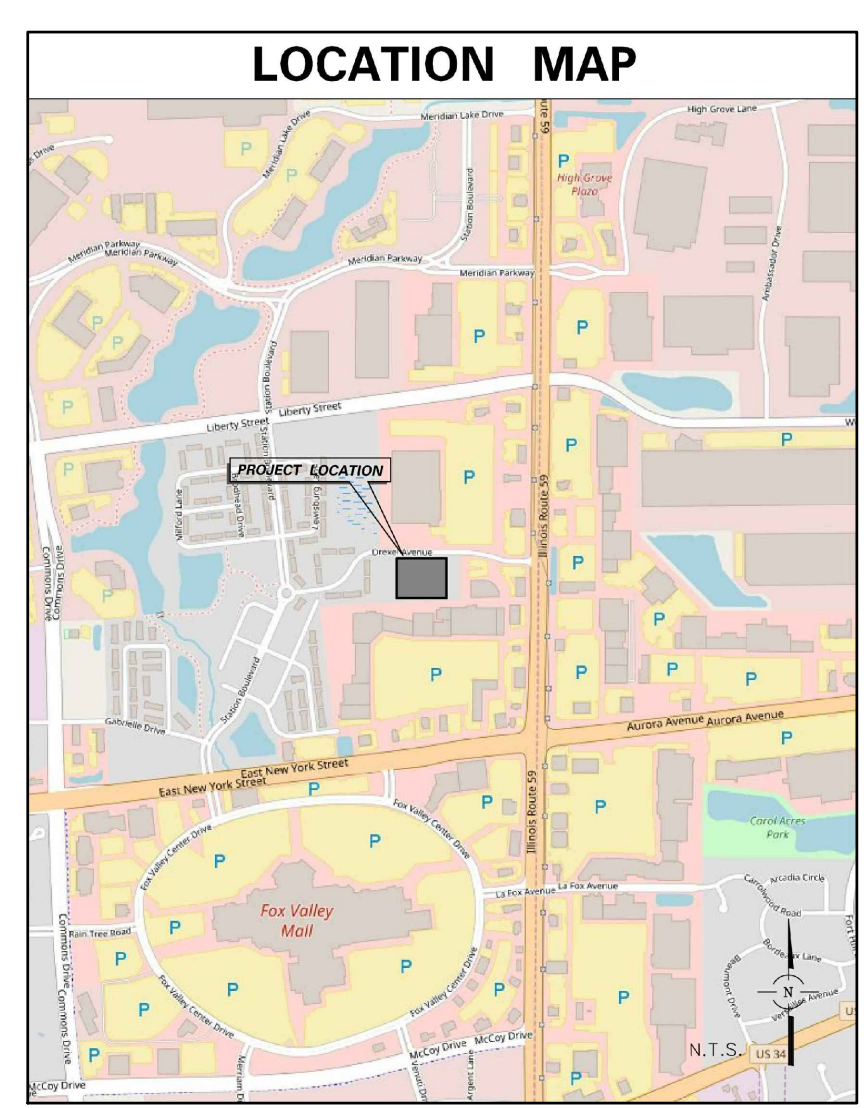
LANDSCAPE PLAN

for

MEIJER 2nd SUBDIVISION



| LEGEND | |
|--------------------------|--------------------------|
| EXISTING | PROPOSED |
| DRAIN TILE | DRAIN TILE |
| STORM SEWER | STORM SEWER |
| SANITARY SEWER | SANITARY SEWER |
| SANITARY TRUNK SEWER | SANITARY TRUNK SEWER |
| WATER MAIN (WITH SOIL) | WATER MAIN (WITH SOIL) |
| PIPE TRENCH BACKFILL | PIPE TRENCH BACKFILL |
| SAFETY MARK | SAFETY MARK |
| TELEPHONE LINES | TELEPHONE LINES |
| ELECTRIC LINE | ELECTRIC LINE |
| FENCE | FENCE |
| RIGHT-OF-WAY | RIGHT-OF-WAY |
| PROPERTY LINE | PROPERTY LINE |
| SETBACK LINE | SETBACK LINE |
| CENTERLINE | CENTERLINE |
| CONTOUR | CONTOUR |
| SANITARY MANHOLE | SANITARY MANHOLE |
| STORM MANHOLE | STORM MANHOLE |
| CATCH BASIN | CATCH BASIN |
| WELLS | WELLS |
| FIRE HYDRANT | FIRE HYDRANT |
| PRESSURE CONNECTION | PRESSURE CONNECTION |
| PIPE REDUCER | PIPE REDUCER |
| VALVE AND VALVE T. VALVE | VALVE AND VALVE T. VALVE |
| FLARED END SECTION | FLARED END SECTION |
| STREET LIGHT | STREET LIGHT |
| UTILITY POLE | UTILITY POLE |
| CONTROL POINT | CONTROL POINT |
| SPOT ELEVATION | SPOT ELEVATION |
| SOIL BORING | SOIL BORING |
| CONCRETE FLOW ROUTE | CONCRETE FLOW ROUTE |
| DRAINAGE SLOPE | DRAINAGE SLOPE |
| GRADUAL | GRADUAL |
| WATER'S EDGE | WATER'S EDGE |
| REVERSE PITCH CURB | REVERSE PITCH CURB |



| KEY | QTY | BOTANICAL NAME | COMMON NAME | SIZE/TYPE |
|---|-----|------------------------------------|--------------------------------|-----------|
| DECIDUOUS SHADE TREES | | | | |
| AFJ | 4 | Acer f. 'Jeffersred' | Autumn Blaze Freeman Maple | 2.5" BB |
| AFM | 3 | Acer f. 'Marmo' | Marmo Freeman Maple | 2.5" BB |
| CS | 1 | Catalpa speciosa | Northern Catalpa | 2.5" BB |
| CO | 4 | Celtis occidentalis | Hackberry | 2.5" BB |
| GTI | 4 | Gleditsia t. 'Imperial' | Imperial Honeylocust | 2.5" BB |
| GB | 4 | Gleditsia t. 'Skyline' | Skyline Honeylocust | 2.5" BB |
| QB | 2 | Quercus bicolor | Swamp White Oak | 2.5" BB |
| QRP | 5 | Quercus r. 'Long' | Regal Prince English Oak | 2.5" BB |
| TSB | 3 | Taxodium d. 'Mickelson' | Shawnee Brave Bald Cypress | 2.5" BB |
| TAM | 6 | Tilia a. 'McKensley' | American Sentry Linden | 2.5" BB |
| UM | 3 | Ulmus 'Morton' | Accolade Elm | 2.5" BB |
| 40 | | | | |
| EVERGREEN TREES | | | | |
| PA | 10 | Picea abies | Norway Spruce | 6" BB |
| PGD | 6 | Picea g. 'Densata' | Black Hills Spruce | 6" BB |
| PFA | 9 | Picea p. 'Fat Albert' | Fat Albert Colorado Spruce | 8" BB |
| PS | 2 | Pinus strobus | Eastern White Pine | 6" BB |
| PM | 6 | Pseudotsuga mendesii | Douglas Fir | 8" BB |
| TC | 1 | Tsuga canadensis | Canadian Hemlock | 6" BB |
| 34 | | | | |
| DECIDUOUS ORNAMENTAL TREES | | | | |
| CCI | 7 | Crataegus c. inermis | Thornless Cockspur Hawthorn | 8" BBcl |
| MDW | 3 | Malus 'Donald Wyman' | Donald Wyman Crabapple | 2.5" BB |
| MRJ | 5 | Malus 'Red Jewel' | Red Jewel Crabapple | 8" BBcl |
| MS | 4 | Malus s. 'Tina' | Sargent Tina Crabapple | 2.5" BB |
| MPF | 4 | Malus 'Prairie Fire' | Prairie Fire Crabapple | 2.5" BB |
| SIS | 5 | Syringa r. 'Ivory Silk' | Ivory Silk Tree Lilac | 2.5" BB |
| VP | 4 | Viburnum prunifolium | Blackhaw Viburnum | 8" BBcl |
| 32 | | | | |
| DECIDUOUS SHRUBS & SHRUB ROSES | | | | |
| CR | 10 | Cornus racemosa | Grey Dogwood | 3" BB |
| DKR | 19 | Dienella r. 'G2X85411' | Red Kediak Dienvilla | 18" #3 |
| DCS | 32 | Dienella s. 'LPDC Podaras' | Cool Splash Bush Honeysuckle | 18" #3 |
| HAA | 5 | Hydrangea a. 'Annabella' | Annabelle Hydrangea | 24" #5 |
| HAI | 4 | Hydrangea a. 'Abetwo' | Incrediball Hydrangea | 24" #5 |
| HQF | 2 | Hydrangea p. 'Quick Fire' | Quick Fire Hydrangea | 30" #5 |
| HVS | 2 | Hydrangea p. 'Rensly' | Vanilla Strawberry Hydrangea | 30" #5 |
| PQJ | 7 | Physocarpus o. 'Jelam' | Amber Jubilee Ninebark | 30" #5 |
| RGL | 50 | Rhus a. 'Gro-Low' | Gro-Low Sumac | 18" #3 |
| RMG | 5 | Rosa 'BAIgir' | Easy Elegance My Girl | 18" #3 |
| RDK | 11 | Rosa 'Radiko' | Double Knockout Shrub Rose | 18" #3 |
| SMK | 23 | Syringa p. 'Miss Kim' | Miss Kim Lilac | #5/24" |
| VJ | 2 | Viburnum 'Judd' | Judd Viburnum | 24" BB |
| VBM | 5 | Viburnum c. 'Christom' | Blue Muffin Arrowwood Viburnum | 30" #5 |
| VD | 10 | Viburnum dentatum | Arrowwood Viburnum | 3" BB |
| VLM | 10 | Viburnum l. 'Mohican' | Mohican Viburnum | 3" BB |
| WDH | 5 | Weigela s. 'Dark Horse' | Dark Horse Weigela | 18" #3 |
| WWR | 20 | Weigela f. 'Alexandra' | Wine & Roses Weigela | #5/24" |
| 226 | | | | |
| EVERGREEN SHRUBS | | | | |
| JGL | 10 | Juniperus c. 'Gold Lace' | Gold Lace Juniper | 18" #3 |
| JKC | 29 | Juniperus c. 'Kalleys' | Kalleys Compact Juniper | 18" #3 |
| JDF | 48 | Juniperus c. 'Daub's Frosted' | Daub's Frosted Juniper | 18" #3 |
| JSG | 31 | Juniperus c. 'Sea Green' | Sea Green Juniper | 18" #3 |
| TMD | 20 | Taxus m. 'Densiformis' | Dense Yew | 18" #3 |
| TOC | 18 | Thuja o. 'Congabe' | Fire Chief Arborvitae | 18" #3 |
| TOS | 10 | Thuja o. 'Smaragd' | Emerald Green Arborvitae | 4" BB |
| 166 | | | | |
| ORNAMENTAL GRASS | | | | |
| CKF | 27 | Calamagrostis a. 'Karl Foerster' | Feather Reed Grass | #1 |
| CNSO | 15 | Chasmanthium latifolium | Northern Sea Oats | #1 |
| SH | 39 | Sporobolus heterolepis | Prairie Dropseed | #1 |
| PERENNIALS | | | | |
| ASB | 8 | Actaea s. 'Brunette' | Black Bugbane | #1 |
| ASK | 3 | Aralia c. 'Sun King' | Golden Japanese Spikenard | #1 |
| HCB | 47 | Hemerocallis 'Coring Bananas' | Coring Bananas Daylily | #1 |
| HSW | 47 | Hemerocallis 'Summer Wine' | Summer Wine Daylily | #1 |
| HGP | 8 | Heuchera 'Georgia Peach' | Georgia Peach Alumroot | #1 |
| HAM | 8 | Hosta 'August Moon' | August Moon Hosta | #1 |
| HG | 5 | Hosta 'Guacamole' | Guacamole Hosta | #1 |
| HJ | 7 | Hosta 'June' | June Hosta | #1 |
| LBMK | 6 | Ligularia d. 'Bill Marie Crawford' | Black-leaved Ligularia | #1 |
| NJW | 72 | Nepeta f. 'Novanepium' | Junior Walker Catmint | #1 |
| NWL | 27 | Nepeta f. 'Walker's Low' | Walker's Low Catmint | #1 |
| RVL | 9 | Rudbeckia h. 'Vette's Little Suzy' | Little Suzy Black-eyed Susan | #1 |

Landscape Data Table: Planting Material Key

| Category | Count |
|---|-------|
| Canopy Trees (minimum size 2.5 caliper) Count: | 40 |
| Evergreen Trees (minimum size 6 feet) Count: | 34 |
| Understory Trees (minimum size 2.5 caliper or 8 feet if multi-stemmed) Count: | 32 |
| Evergreen Shrubs (minimum of 18 inches) Count: | 166 |
| Deciduous Shrubs (minimum of 18 inches) Count: | 226 |
| Ornamental Grasses Count: | 66 |
| Perennials Count: | 247 |
| Annuals Count: | 265 |
| Turf (Seeded) Square Footage: | 19880 |
| Turf (Sod) Square Footage: | 2210 |
| Native Prairie Planting Square Footage: | 0 |
| Native Wetland Planting Square Footage: | 0 |

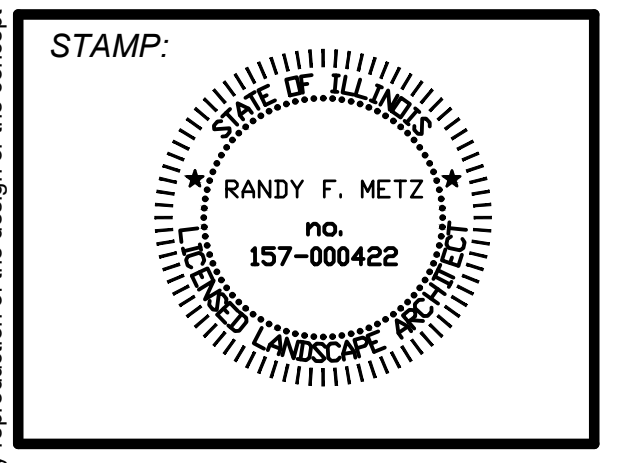
| Landscape Data Table: CTEs Provided | | |
|-------------------------------------|----------------|---------------------|
| CTE Value | Count Provided | Total CTEs Provided |
| Canopy Trees | 1 | 40 |
| Evergreen Trees | 3 | 34 |
| Understory Trees | 3 | 32 |
| Deciduous Shrubs | 20 | 226 |
| Evergreen Shrubs | 20 | 166 |
| Total: | 498 | 82 |

| REVISIONS | |
|-----------|----------------------------|
| 4 | City Review 7-19-18 |
| 3 | City Review 6-27-18 |
| 2 | City Review 3-21-18 |
| 1 | Owner/Client Review 2-9-18 |

BEST WESTERN PREMIER
DREXEL AVENUE
AURORA, ILLINOIS

OWNER:
Aurora Hospitality Group, LLC
P.O. Box 6091
Aurora, IL 60008

PECTIONER:
PEAK Construction Corporation
1011 Touhy, Suite 100
Des Plaines, IL 60008



METZ & COMPANY
LANDSCAPE ARCHITECTURE/SITE PLANNING

826 East Maple Street
Lombard, Illinois 60148
PH: 630.561.3903
Email: metz_landarch@comcast.net

TITLE
LANDSCAPE PLAN

PROJECT NO.:
18-082

DATE: **1-31-18**

SCALE: **1"=20'**

SHEET
L-1

Copyright 2018 all rights reserved. The design and any and all ideas contained herein are the sole property of Metz & Company. Any reproduction of the design or in part, without consent from Metz & Company is prohibited. If this plan is not 24" x 36" in size, then it is a reproduction that may not be scale.