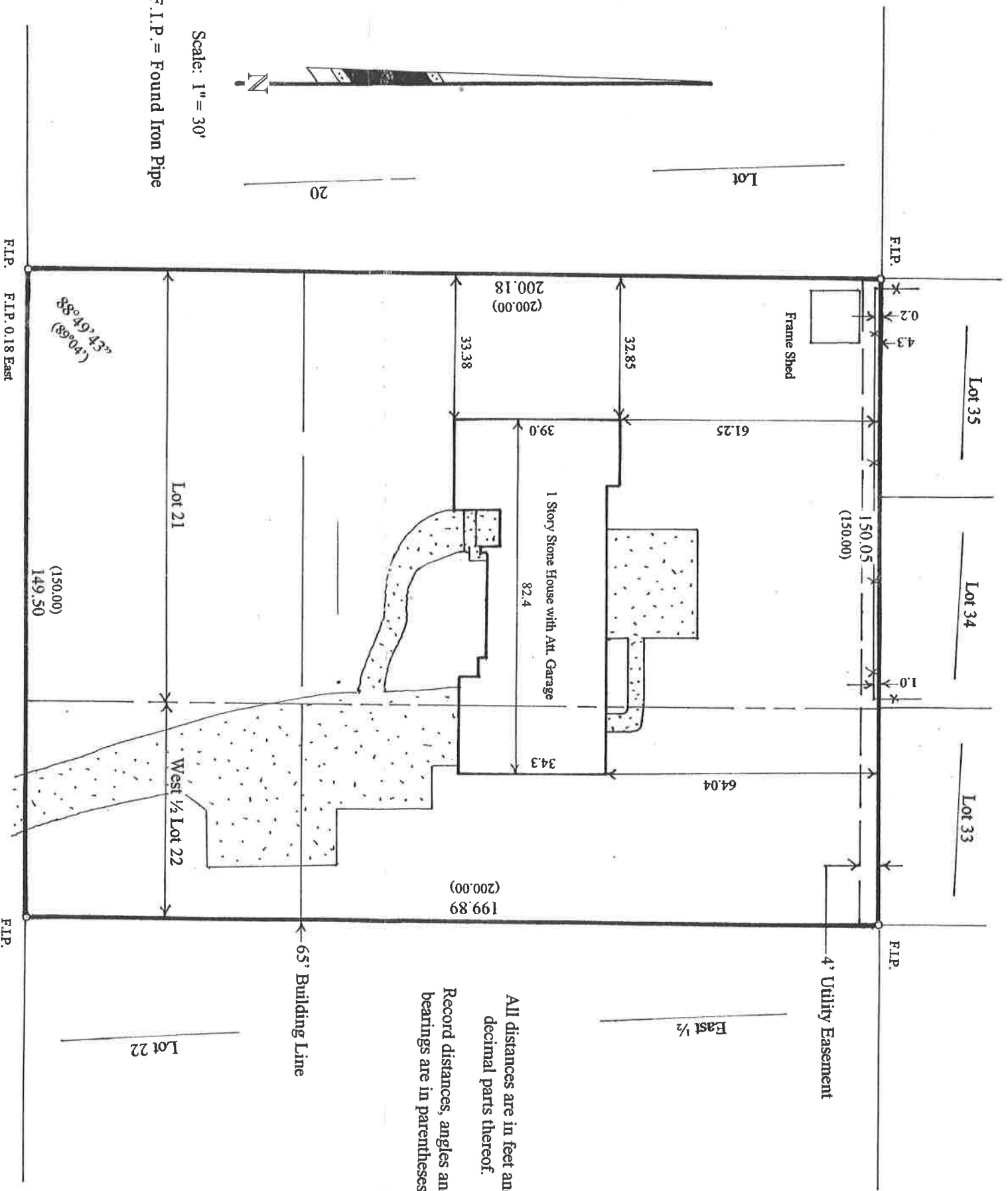


Plat of Survey

LOT 21 AND THE WEST HALF OF LOT 22 OF COUNTRY CLUB ESTATES, AURORA, ILLINOIS, ACCORDING TO THE PLAT THEREOF RECORDED MAY 22, 1926 IN BOOK 26 OF PLATS, PAGE 7, AS DOCUMENT 274112, IN KANE COUNTY, ILLINOIS.

Commonly known as 1433 Prairie Street, Aurora.
P.I.N. 15-20-382-011



All distances are in feet and decimal parts thereof.
Record distances, angles and bearings are in parentheses.

Scale: 1" = 30'

F.I.P. = Found Iron Pipe

Prairie

Street

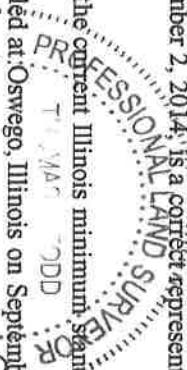
State of Illinois)
County of Kendall) SS

I, Thomas J. Todd, an Illinois Professional Land Surveyor, do hereby certify that the plat shown hereon, being completed in the field on September 2, 2014, is a correct representation of a survey performed at and under my direction.

This professional service conforms to the current Illinois minimum standards for a boundary survey.

Signed and sealed at Oswego, Illinois on September 9, 2014.

Thomas J. Todd



Illinois Professional Land Surveyor No. 2467
License Expires Nov. 30, 2014