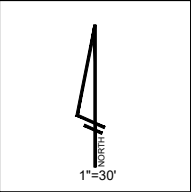
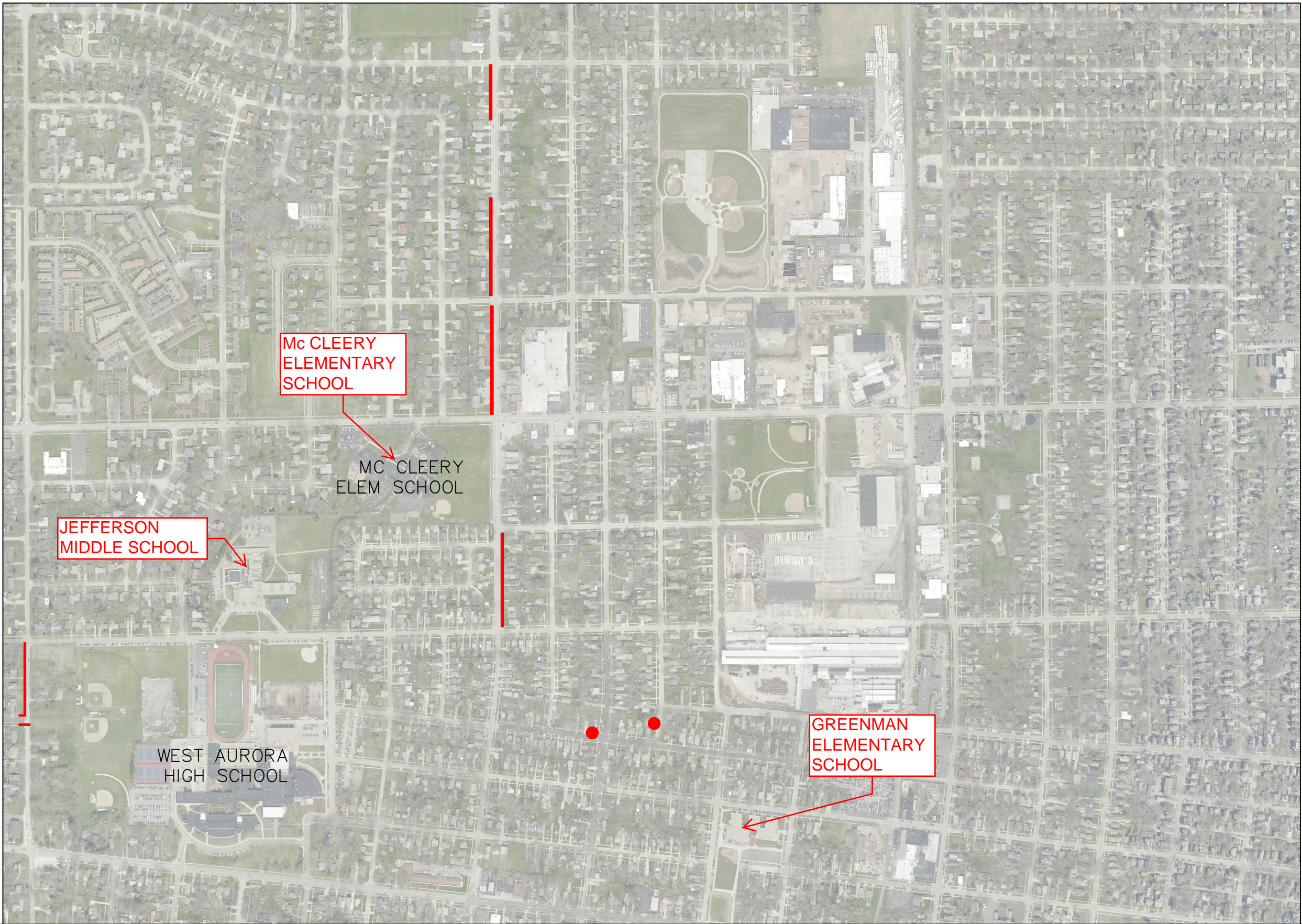


# PROJECT LOCATION MAP





CITY OF AURORA  
ENGINEERING DIVISION  
77 SOUTH BROADWAY

REVISIONS:

DESIGNED BY: RA	CHECKED BY: RG	SCALE: NTS
DRAWN BY: AH	APPROVED BY: RG	DATE: 9/2021

PROJECT

SAFE ROUTES TO SCHOOL

SHEET TITLE

SD 129 - Overall Map

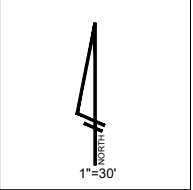
SHEET NUMBER

1

TOTAL SHEETS

5





CITY OF AURORA  
ENGINEERING DIVISION  
77 SOUTH BROADWAY

REVISIONS:

DESIGNED BY: RA	CHECKED BY: RG	SCALE: NTS
DRAWN BY: AH	APPROVED BY: RG	DATE: 9/2021

PROJECT

SAFE ROUTES TO SCHOOL

SHEET TITLE

SD 129 - Charles St. & Morton Ave

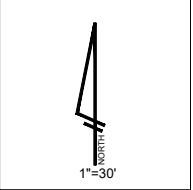
SHEET NUMBER

2

TOTAL SHEETS

5





CITY OF AURORA  
ENGINEERING DIVISION  
77 SOUTH BROADWAY

REVISIONS:

DESIGNED BY: RA	CHECKED BY: RG	SCALE: NTS
DRAWN BY: AH	APPROVED BY: RG	DATE: 9/2021

PROJECT

SAFE ROUTES TO SCHOOL

SHEET TITLE

SD 129 - Randall - Plum to Randall Court

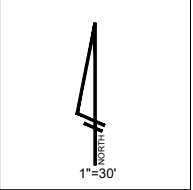
SHEET NUMBER

3

TOTAL SHEETS

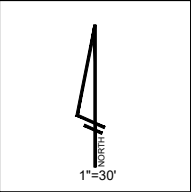
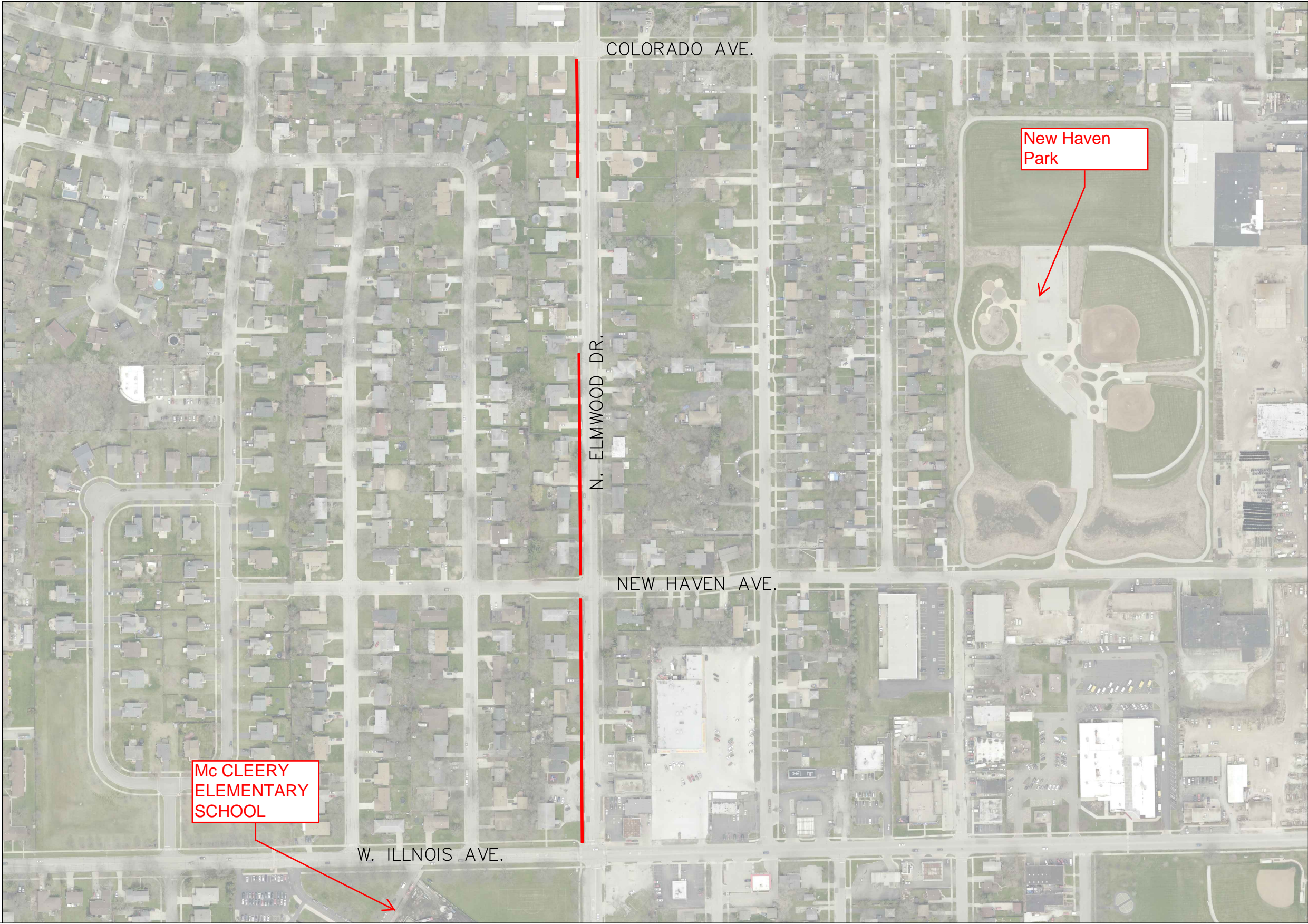
5





	CITY OF AURORA ENGINEERING DIVISION 77 SOUTH BROADWAY	REVISIONS:			PROJECT  SAFE ROUTES TO SCHOOL  SHEET TITLE SD 129 - Elmwood - Hoyt to Plum	SHEET NUMBER  4  TOTAL SHEETS 5
		DESIGNED BY: RA	CHECKED BY: RG	SCALE: NTS		
		DRAWN BY: AH	APPROVED BY: RG	DATE: 9/2021		





	CITY OF AURORA ENGINEERING DIVISION 77 SOUTH BROADWAY	REVISIONS:			PROJECT  SAFE ROUTES TO SCHOOL  SHEET TITLE SD 129 - Elmwood - Colorado to Illinois	SHEET NUMBER  5  TOTAL SHEETS 5
		DESIGNED BY: RA	CHECKED BY: RG	SCALE: NTS		
		DRAWN BY: AH	APPROVED BY: RG	DATE: 9/2021		