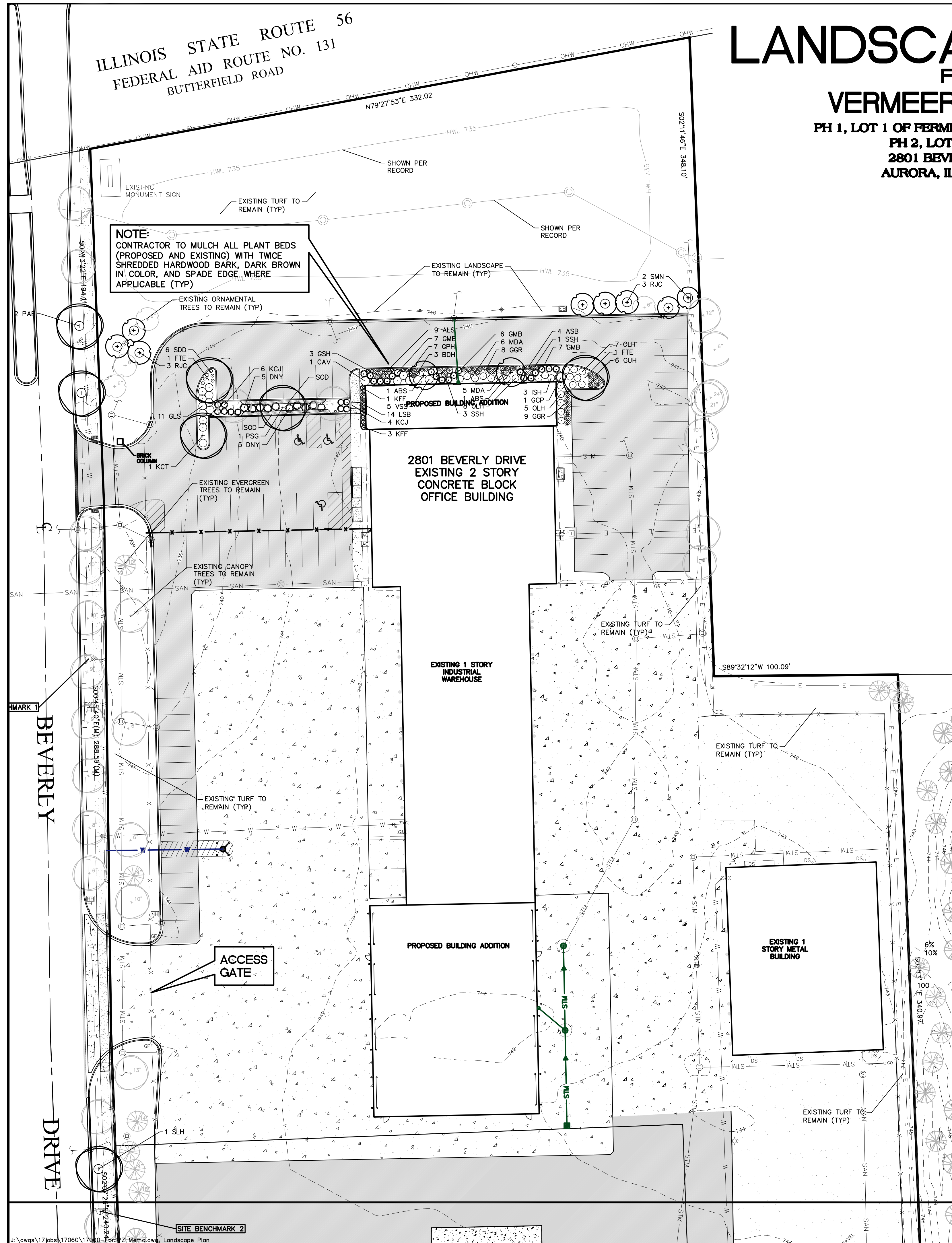


# LANDSCAPE PLAN

FOR  
**VERMEER MIDWEST**  
 PH 1, LOT 1 OF FERMI CORPORATE PARK AND  
 PH 2, LOT 13,14,15,16  
 2801 BEVERLY COURT  
 AURORA, ILLINOIS 60502



**NOTE:**  
 CONTRACTOR TO MULCH ALL PLANT BEDS (PROPOSED AND EXISTING) WITH TWICE SHREDDED HARDWOOD BARK, DARK BROWN IN COLOR, AND SPADE EDGE, WHERE APPLICABLE (TYP)

**Landscape Data Table: Planting Material Key**  
 Note: Symbols are blackline for proposed grayscale for existing

Canopy Trees (minimum size 2.5 caliper) Count:	39
Evergreen Trees (minimum size 6 feet) Count:	80
Understory Trees (minimum size 2.5 caliper or 8 feet if multi-stemmed) Count:	10
Evergreen Shrubs (minimum of 18 inches) Count:	41
Deciduous Shrubs (minimum of 18 inches) Count:	40
Ornamental Grasses Count:	4
Perennials Count:	84
Annuals Count:	0
Groundcover Square Footage:	0
Turf (Seeded) Square Footage:	38324
Turf (Sod) Square Footage:	0
Native Prairie Planting Square Footage:	0
Native Wetland Planting Square Footage:	0



**LEGEND**

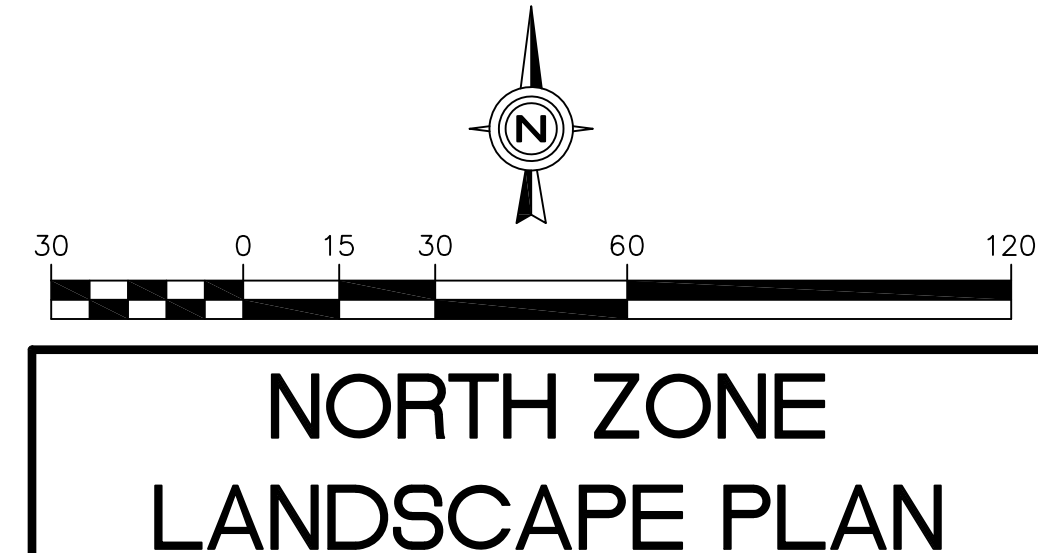
EXISTING	DESCRIPTION	PROPOSED
[Symbol]	CATCH BASIN	[Symbol]
[Symbol]	INLET	[Symbol]
[Symbol]	STORM MANHOLE	[Symbol]
[Symbol]	SANITARY MANHOLE	[Symbol]
[Symbol]	VALVE VAULT	[Symbol]
[Symbol]	FIRE HYDRANT	[Symbol]
[Symbol]	FLARED END SECTION	[Symbol]
[Symbol]	ELECTRICAL POWER POLE	[Symbol]
[Symbol]	OVERHEAD TRAFFIC SIGNAL	[Symbol]
[Symbol]	TRAFFIC SIGNAL MANHOLE	[Symbol]
[Symbol]	OVERHEAD ELECTRIC WIRES	[Symbol]
[Symbol]	TRANSFORMER PAD	[Symbol]
[Symbol]	TELEPHONE PEDESTAL	[Symbol]
[Symbol]	CABLE TELEVISION PEDESTAL	[Symbol]
[Symbol]	COMMONWEALTH EDISON MANHOLE	[Symbol]
[Symbol]	BURIED LIGHT POLE	[Symbol]
[Symbol]	ISLAND POLE	[Symbol]
[Symbol]	GAS MARKER	[Symbol]
[Symbol]	ELECTRIC MARKER	[Symbol]
[Symbol]	WATER MARK	[Symbol]
[Symbol]	TELEPHONE MARKER	[Symbol]
[Symbol]	GAS MAIN	[Symbol]
[Symbol]	ELECTRIC LINE	[Symbol]
[Symbol]	TELEPHONE LINE	[Symbol]
[Symbol]	CABLE TV LINE	[Symbol]
[Symbol]	SANITARY SEWER	[Symbol]
[Symbol]	STORM SEWER	[Symbol]
[Symbol]	GUY POLE	[Symbol]
[Symbol]	EXISTING CANOPY TREE	[Symbol]
[Symbol]	EXISTING ORNAMENTAL TREE	[Symbol]
[Symbol]	EXISTING EVERGREEN TREE	[Symbol]
[Symbol]	WOOD PILING	[Symbol]
[Symbol]	CHAIN LINK FENCE	[Symbol]
[Symbol]	METAL GUARDRAIL	[Symbol]
[Symbol]	CONCRETE SURFACE	[Symbol]
[Symbol]	CONTOUR LINE	[Symbol]
[Symbol]	FINISHED FLOOR ELEVATION	[Symbol]
[Symbol]	PAVEMENT ELEVATION	[Symbol]
[Symbol]	MATCH EXISTING ELEVATION	[Symbol]
[Symbol]	SHOULDER ELEVATION	[Symbol]
[Symbol]	TOP OF WALK ELEVATION	[Symbol]
[Symbol]	TOP OF RETAINING WALL ELEVATION	[Symbol]
[Symbol]	TOP OF CURB ELEVATION	[Symbol]
[Symbol]	RM ELEVATION	[Symbol]
[Symbol]	CONCRETE LOCATION	[Symbol]
[Symbol]	PERVIOUS AREA SLOPE DIRECTION	[Symbol]
[Symbol]	OVERLAND OVERFLOW DIRECTION	[Symbol]
[Symbol]	INLET PROTECTION	[Symbol]
[Symbol]	INLET BASKET FILTER	[Symbol]

**Landscape Data Table: CTEs Provided**

CTE Value	Count Provided	Total CTEs Provided
Canopy Trees	1	39
Evergreen Trees	1/3	80
Understory Trees	1/3	10
Deciduous Shrubs	1/20	40
Evergreen Shrubs	1/20	41
<b>Total:</b>	<b>210</b>	<b>73</b>

**Landscape Implementation Data Table: Plant List by Category**

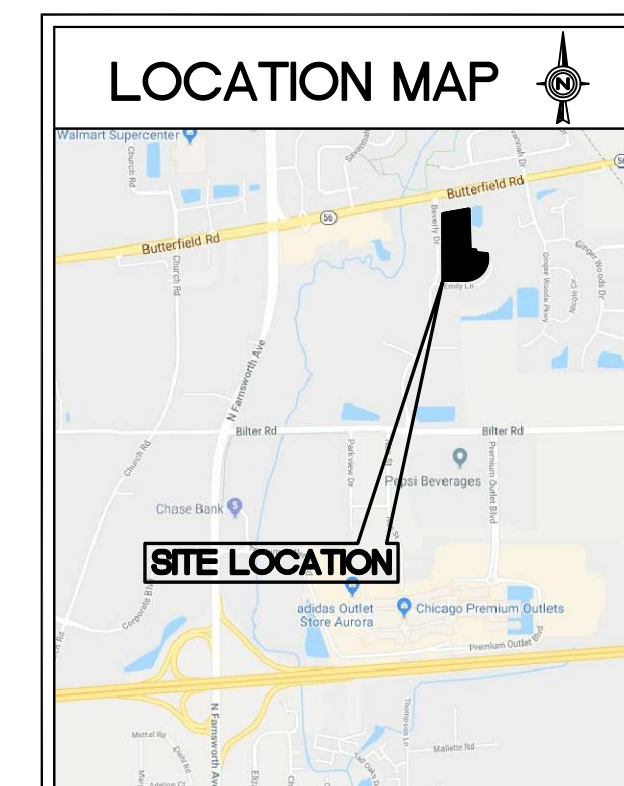
QTY	Percent	SYM	BOTANICAL NAME (Family / Genus / Species)	COMMON NAME	SIZE	COMMENTS
<b>Canopy Trees</b>						
4	10%	PSG	ginkgoaceae / Ginkgo biloba	Pinelton Sentry Ginkgo	2.5"	
5	13%	MAM	Aceraceae / Acer / fremanii	Marmo Maple	2.5"	
3	8%	CHB	Ulmaceae / Celtis / occidentalis	Hackberry	2.5"	
2	5%	SLH	ibaceae / Glodisia / fracarath	Skyline Honey Locust	2.5"	
5	13%	KCT	ibaceae / Gymnocladus / dioica	Kentucky Coffeetree	2.5"	
2	5%	SWO	Fagaceae / Quercus / bicolor	Swamp White Oak	2.5"	
3	8%	BOK	agaceae / Quercus / macrocar	Burr Oak	2.5"	
2	5%	TLP	niaceae / Liriodendron / tul	Tulip Tree	2.5"	
2	5%	FTE	Ulmaceae / Ulmus / Frontier	Frontier Hybrid Elm	2.5"	
3	8%	AML	Malvaceae / Tilia / americana	American Linden	2.5"	
1	3%	CBC	ressaceae / Taxodium / distic	Bald Cypress	2.5"	
5	13%	PAE	maceae / Ulmus / New Horiz	Horizons Hybrid E	2.5"	
2	5%	BLP	atanaceae / Platanus / acerif	London Plane tree	2.5"	
	0%					
	0%					
<b>Total:</b>	<b>39</b>	<b>100%</b>				
<b>Evergreen Trees</b>						
15	19%	BHS	Piceaceae / Picea / glauca	Black Hills Spruce	6'	
5	6%	EWP	Pinaceae / Pinus / strobus	Eastern White Pine	6'	
10	13%	NWS	Pinaceae / Pinus / abies	Norway Spruce	6'	
5	6%	SBS	Piceaceae / Picea / omorika	Serbian Spruce	6'	
8	8%	DGF	raaceae / Pseudotsuga / menz	Douglas Fir	6'	
27	34%	CNJ	praceae / Juniperus / virginia	Cansertii Juniper	6'	
10	13%	GCS	Piceaceae / Picea / pungens	Colorado Green Spruc	6'	
	0%					
	0%					
	0%					
	0%					
	0%					
<b>Total:</b>	<b>80</b>	<b>100%</b>				
<b>Understory Trees</b>						
2	20%	ABS	aceae / Amelanchier / grandifm	Brilliance Service	6'	
2	20%	SMN	oliaceae / Magnolia / soulan	Saucer Magnolia	6'	
6	60%	RJC	rosaceae / Malus / Red Jewe	Red Jewel Crabapple	6'	
	0%					
	0%					
	0%					
	0%					
<b>Total:</b>	<b>10</b>	<b>100%</b>				
<b>Deciduous Shrubs</b>						
3	8%	ISH	ageaceae / Hydrangea / arboric	bell Spirit Hydrang	5 Gal	
5	13%	VSS	ingeaceae / Hydrangea / pan	V.S.S. Hydrangea	5 Gal	
20	50%	OLH	ingeaceae / Hydrangea / quer	Oakleaf Hydrangea	5 Gal	
11	28%	GLS	acardiaceae / Rhus / aromati	Gro-Low Sumac	5 Gal	
1	3%	CAV	doxaceae / Viburnum / Cayug	Cayuga Viburnum	5 Gal	
	0%					
	0%					
	0%					
	0%					
<b>Total:</b>	<b>40</b>	<b>100%</b>				
<b>Evergreen Shrubs</b>						
20	49%	GVB	xaceae / Buxus / Green Mount	teen Mountain Boxwo	5 Gal	
1	2%	GCP	issaceae / Chamaecyparis / p	Soft Serve Cypress	3 Gal	
10	24%	DNY	taxaceae / Taxus / densiform	Dense Yew	5 Gal	
10	24%	KCJ	ressaceae / Juniperus / chire	llay's Compact Junp	5 Gal	
	0%					
	0%					
<b>Total:</b>	<b>41</b>	<b>100%</b>				



DATE	3/7/18
REVISONS	PER CITY COMMENTS
NO.	1
NO.	2
Prepared For:	
Keeley Construction, Inc. 2445 East Sidney Court Villa Park, IL 60181 <b>VERMEER MIDWEST - AURORA, IL</b> PH 1, LOT 1 OF FERMI CORPORATE PARK AND PH 2, LOT 13,14,15,16 2801 BEVERLY COURT, AURORA, ILLINOIS 60502	
Prepared By:	
2637 Ginger Woods Parkway, Suite 100, Aurora, IL 60502 phone 630-375-1800 fax 630-236-9600 www.watermark-engineering.com	
CHECKED BY: B.PERRY	DESIGN BY: B.PERRY
DRAWN BY: DMORIK	DATE: FEB. 8, 2017
SCALE: 1" = 30'	PROJECT NO.: 17-060
<b>2-7</b>	

# LANDSCAPE PLAN

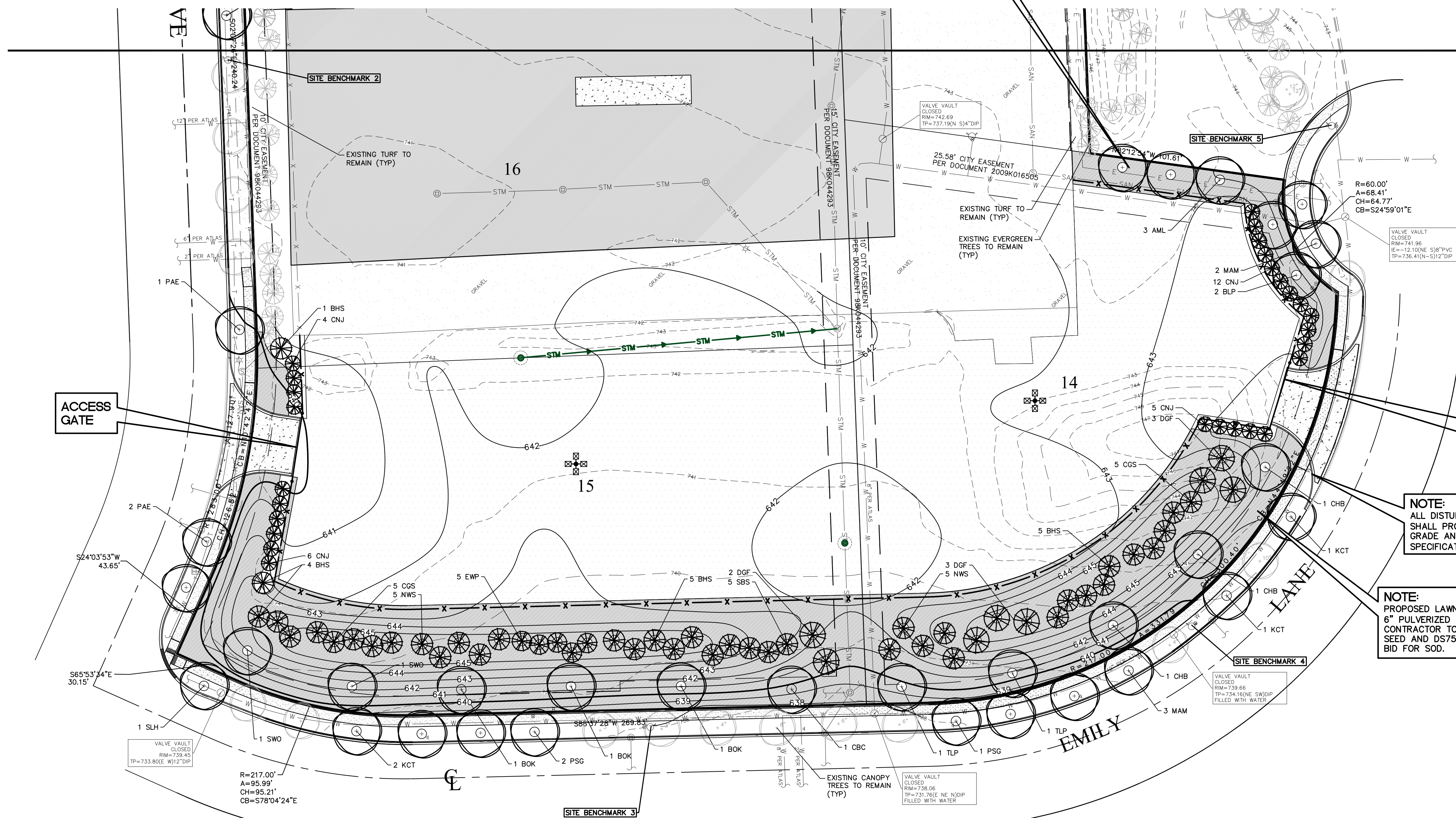
FOR  
**VERMEER MIDWEST**  
 PH 1, LOT 1 OF FERMI CORPORATE PARK AND  
 PH 2, LOT 13,14,15,16  
 2801 BEVERLY COURT  
 AURORA, ILLINOIS 60502



### LEGEND

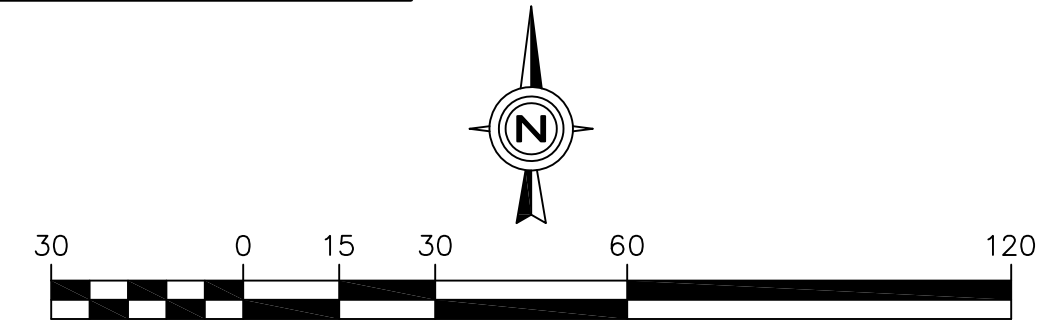
EXISTING	DESCRIPTION	PROPOSED
	CATCH BASIN INLET	
	STORM MANHOLE	
	SANITARY MANHOLE	
	VALVE VAULT	
	FIRE HYDRANT	
	FLARED END SECTION	
	ELECTRICAL POWER POLE	
	OVERHEAD TRAFFIC SIGNAL	
	TRAFFIC SIGNAL MANHOLE	
	OVERHEAD ELECTRIC WIRES	
	TRANSFORMER PAD	
	TELEPHONE PEDESTAL	
	CABLE TELEVISION PEDESTAL	
	COMMONWEALTH EDISON MANHOLE	
	LIGHT POLE	
	SIGN	
	ISLAND POLE	
	GAS MARKER	
	ELECTRIC MARKER	
	TELEPHONE MARKER	
	WATER MARK	
	GAS MAN	
	ELECTRIC LINE	
	TELEPHONE LINE	
	CABLE TV LINE	
	SANITARY SEWER	
	STORM SEWER	
	GUY POLE	
	EXISTING CANOPY TREE	
	EXISTING ORNAMENTAL TREE	
	EXISTING EVERGREEN TREE	
	WOOD FENCE	
	CHAIN LINK FENCE	
	METAL GUARDRAIL	
	CONCRETE SURFACE	
	CONTOUR LINE	
	FINISHED FLOOR ELEVATION	
	PAVEMENT ELEVATION	
	MATCH EXISTING ELEVATION	
	GRADING ELEVATION	
	TOP OF WALK ELEVATION	
	TOP OF RETAINING WALL ELEVATION	
	FLOW LINE ELEVATION	
	TOP OF CURVE ELEVATION	
	RM ELEVATION	
	CORNERPOST LOCATION	
	PROPOSED AREA SLOPE DIRECTION	
	OVERLAND OVERFLOW DIRECTION	
	INLET PROTECTION	
	INLET BASKET FILTER	

**NOTE:**  
 CONTRACTOR TO MULCH ALL PLANT BEDS (PROPOSED AND EXISTING) WITH TWICE SHREDDED HARDWOOD BARK, DARK BROWN IN COLOR, AND SPADE EDGE WHERE APPLICABLE (TYP)



**NOTE:**  
 ALL DISTURBED LAWN AREAS WITHIN THE R.O.W. SHALL PROVIDE 6" PULVERIZED TOPSOIL TO FINISH GRADE AND SALT TOLERANT SOD. PER KDOT SPECIFICATIONS (TYP)

**NOTE:**  
 PROPOSED LAWN AREAS. CONTRACTOR TO PROVIDE 6" PULVERIZED TOPSOIL TO FINISH GRADE. CONTRACTOR TO PROVIDE SEPARATE A BID FOR SEED AND DS75 EC BLANKET AND AN ALTERNATE BID FOR SOD.



## SOUTH ZONE LANDSCAPE PLAN

DATE	3/7/18
REVISIONS	1 PER CITY COMMENTS
	2 PER CITY COMMENTS
NO.	1
	2
Prepared For:	
Keeley Construction, Inc. 2445 East Sidney Court Villa Park, IL 60181	
VERMEER MIDWEST - AURORA, IL PH 1, LOT 1 OF FERMI CORPORATE PARK AND PH 2, LOT 13,14,15,16 2801 BEVERLY COURT, AURORA, ILLINOIS 60502	
Prepared By:	
 2631 Ginger Woods Parkway, Suite 100, Aurora, IL 60502 phone 630-375-1800 fax 630-236-9800 www.watermark-engineering.com	
CHECKED BY: B.PERRY	DESIGN BY: B.PERRY
DRAWN BY: DMORLIK	DATE: FEB. 8, 2017
SCALE: 1" = 30'	PROJECT NO.: 17-060
2-7	