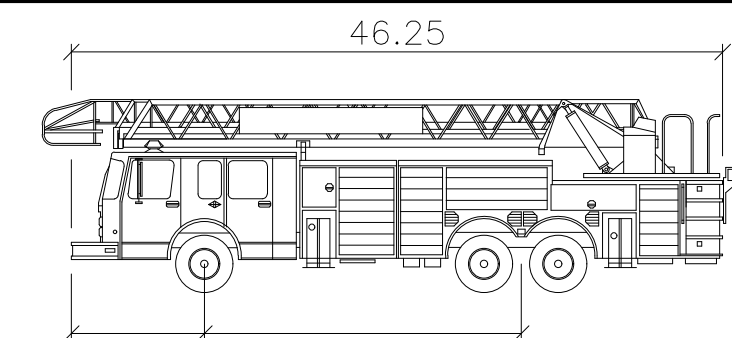


FIRE ACCESS PLAN FOR TRANSITIONAL CARE - AURORA



Aurora Firetruck

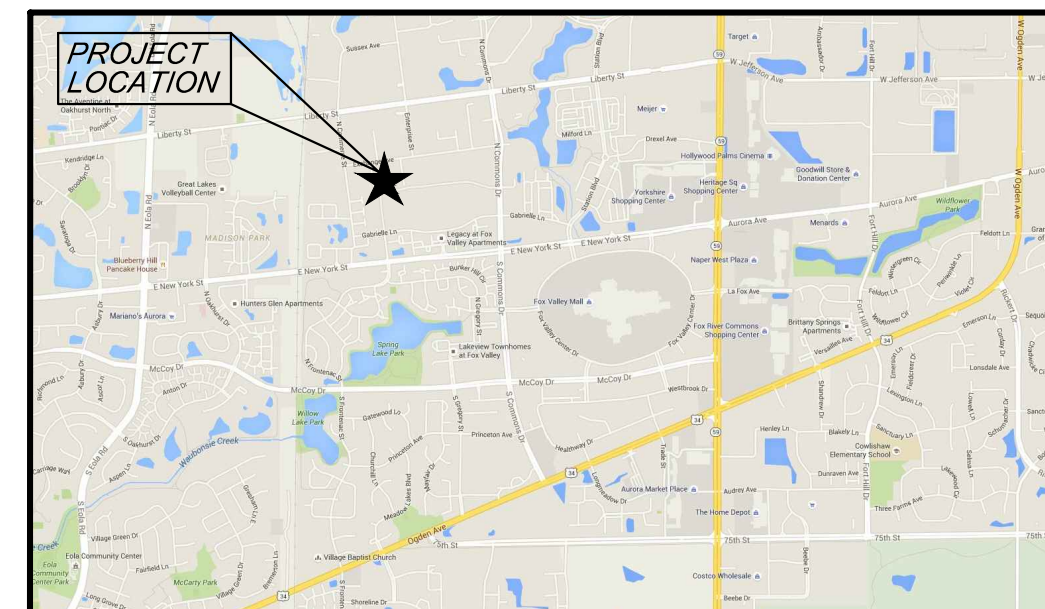
feet

Width : 8.33
Track : 8.33
Lock to Lock Time : 6.0
Steering Angle : 23.2

Fire Access Plan Data Table		
Description	Value	Unit
a) Building Height	33.80	feet
b) Building Square Footage (typical)	50,582	square feet
c) Building fire suppression information including any proposed use of sprinkler systems, fire alarm systems, whether fire extinguishers are needed: Sprinklered building with fire alarm		
d) General description of business to be conducted within each building including: will there be rack storage in the building, will there be storage of combustible materials over twelve feet in height, clearance of sprinkler heads and stored materials (18 inch minimum): Transitional Care Facility		

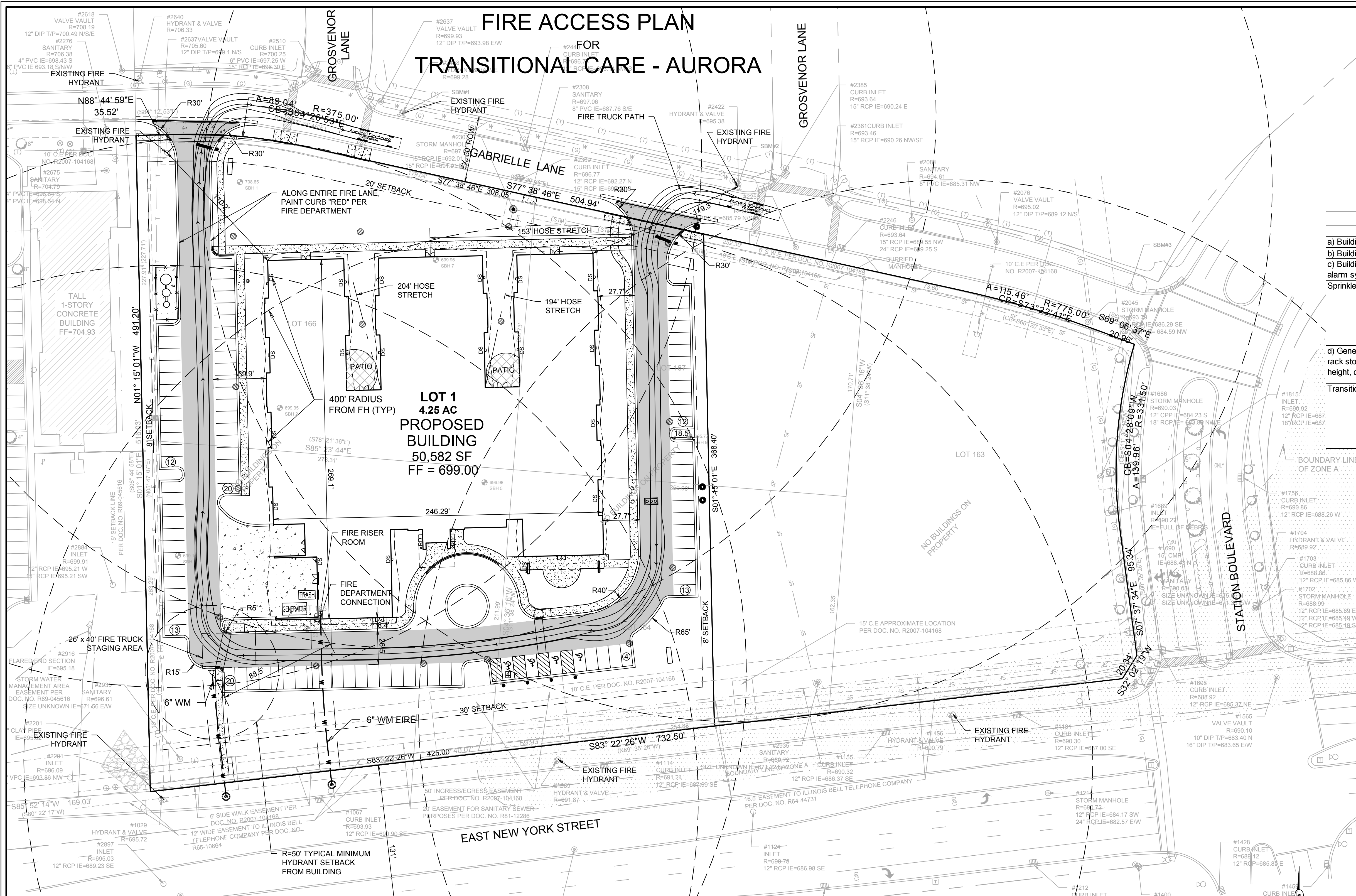
LEGEND

- DESIGNATES FIRE APPARATUS ACCESS ROAD
- MINIMUM WIDTH = 26 FEET
- GRADE NOT TO EXCEED 10%
- 1.5" HMA SURFACE COURSE, MIX "D", N50
- 2.5" HMA BINDER COURSE, IL 19, N50
- 10" COMPACTED AGGREGATE BASE COURSE, TYPE B CA-6 COMPACTED SUBGRADE

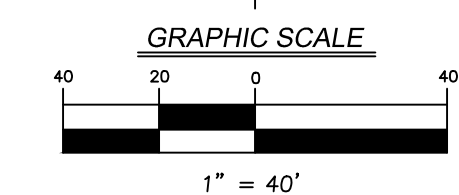


LOCATION MAP

LOTS 163 THROUGH 167, INCLUSIVE IN THE PLAZA ON NEW YORK SUBDIVISION, BEING A SUBDIVISION OF PART OF SECTION 21, TOWNSHIP 38 NORTH, RANGE 9 EAST OF THE THIRD PRINCIPAL MERIDIAN, ACCORDING TO THE PLAT THEREOF RECORDED JUNE 5, 2007 AS DOCUMENT R2007-104168 IN THE CITY OF AURORA, IN DUPAGE COUNTY, ILLINOIS.



<p style="text-align: center;">OWNER/DEVELOPER</p> <p style="text-align: center;">IH Fox Valley Owner, LLC 6400 Shafer Ct., Suite 600 Rosemont, Illinois 60018 312 982 1717 Contact : Brad Haber</p>	<p style="text-align: center;">ENGINEER</p> <p style="text-align: center;">V3 Companies of Illinois, Ltd. 7325 Janes Avenue Woodridge, Illinois 60517 630 724 9200 Project Manager : Bryan C. Rieger, P.E. Project Engineer : Matthew T. Brolley, P.E., CFM</p>
--	---



V3 Companies
7325 Janes Avenue
Woodridge, IL 60517
630.724.9200 phone
630.724.9202 fax
www.v3co.com

REVISIONS			
NO.	DATE	DESCRIPTION	NO.
1	05-17-17	REVISED PER CITY REVIEW	
2	08-01-17	REVISED PER CITY REVIEW	

PROJECT NO.: 16008 S04	DESIGNED BY: MTB	<h2 style="margin: 0;">TRANSITIONAL CARE - AURORA</h2> <p style="margin: 0;">ILLINOIS</p>
FILE NAME: EX1 FIRE ACCESS PLAN16008.DWG	DRAWN BY: NRS	
ORIGINAL ISSUE DATE: 04-21-17	CHECKED BY: BCR	
SCALE: 1"=40'	PROJECT MANAGER: BCR	

<h2 style="margin: 0;">FIRE ACCESS PLAN</h2>	<h1 style="margin: 0;">EX 1</h1>
DRAWING NO.	