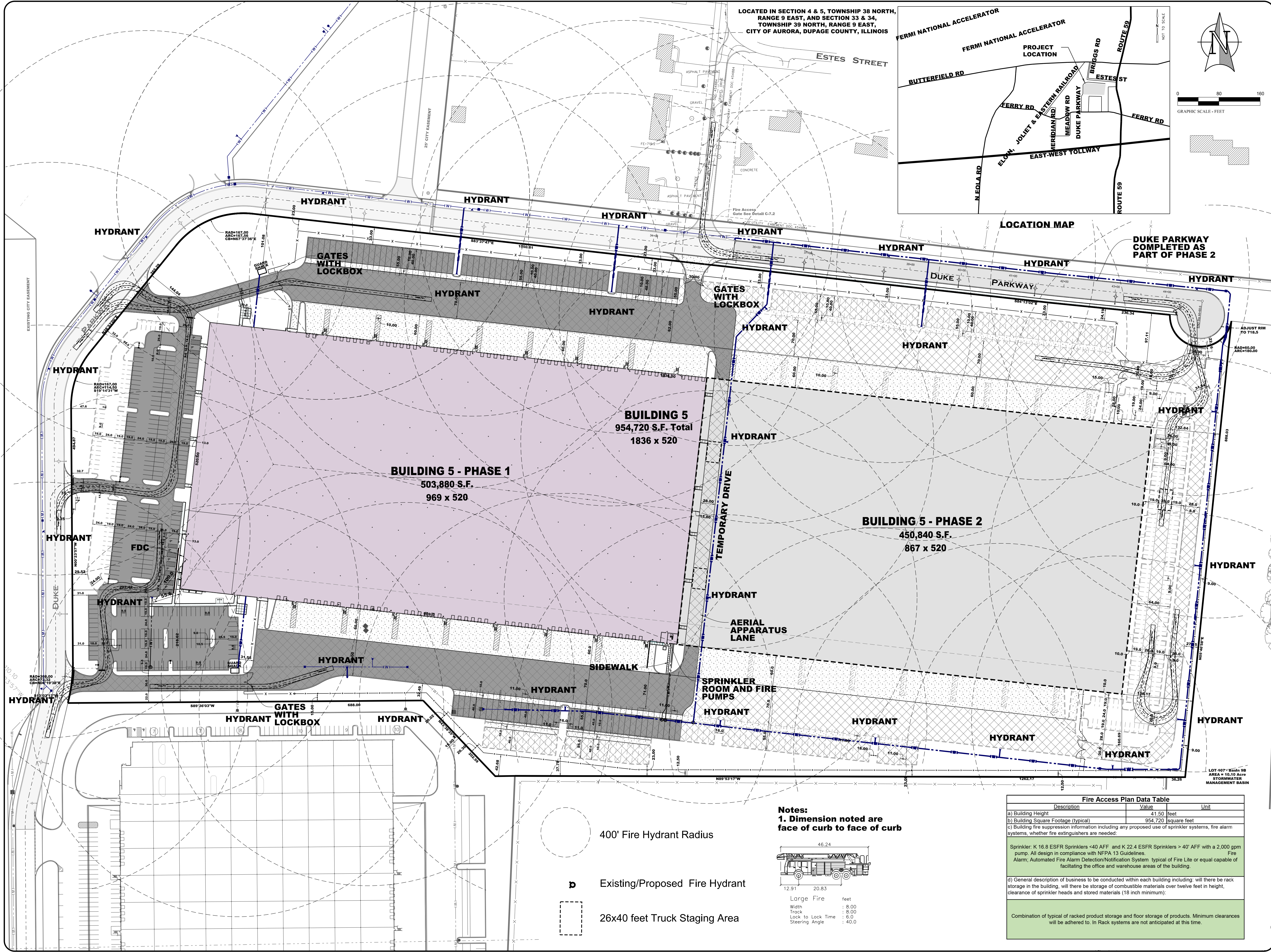
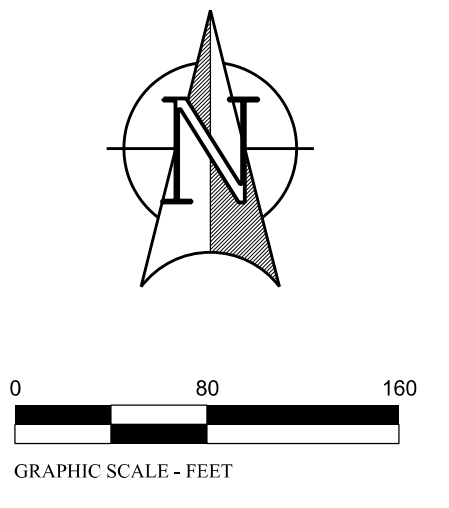
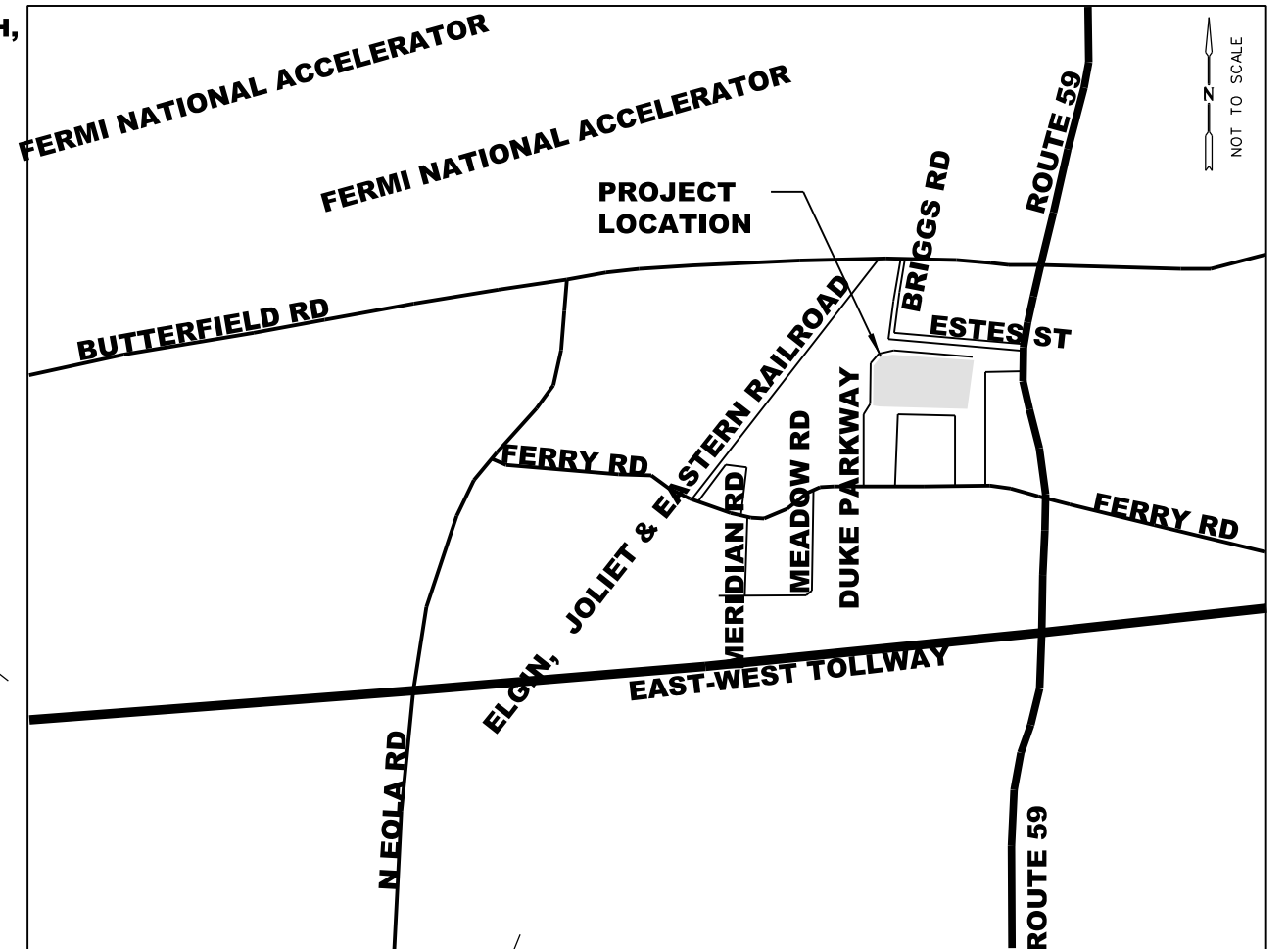


DATE: 4/13/2016
 FILE: E:\ACTIVE-PROJECTS\1516-333809-DuPage\ENGR\BBFFINAL ENGINEERING PLANS\PHASE 3\Lot 5\1516 - FDD Cml - Lot 5.dgn
 MODEL: FAP-1



LOCATED IN SECTION 4 & 5, TOWNSHIP 38 NORTH,
 RANGE 9 EAST, AND SECTION 33 & 34,
 TOWNSHIP 39 NORTH, RANGE 9 EAST,
 CITY OF AURORA, DUPAGE COUNTY, ILLINOIS



Duke REALTY
 DUKE REALTY LIMITED PARTNERSHIP
 1301 West 22nd St., Suite 800
 Oak Brook, IL 60523
 847.232.5400 • 847.232.5691 (fx)

WEBSTER, MCGRATH & AHLBERG LTD.
VMA
 LAND SURVEYING • CIVIL ENGINEERING • LANDSCAPE ARCHITECTURE
Over 100 Years of Service to Clients
 217 South Naperville Road, Wheaton, Illinois 60157
 (630)698-7003 Fax: (630)682-1700 Email: wma@wmaahb.com
 Design Firm License No. 154-020701

LOT 5
BUTTERFIELD EAST - UNIT 3
FINAL ENGINEERING PLANS
 2865 DUKE PARKWAY
 CITY OF AURORA, IL
FIRE ACCESS PLAN

ISSUANCES

3	NE ACCESS, E. WATER MAIN	04/12/16
2	ADD PHASING & FENCE HGT.	04/07/16
1	COA PDD REVIEW	03/25/16
#	Description	Date

DRAWING INFORMATION

Scale: 1"=80'
 Date: 03/07/2016
 Checked By: SMR/BMB
 Drawn By: BMB / RLS
 Duke Realty Job #: _____
 A/E Job #: 41516

DRAWING / SHEET TITLE
FIRE ACCESS PLAN
 SHEET NUMBER

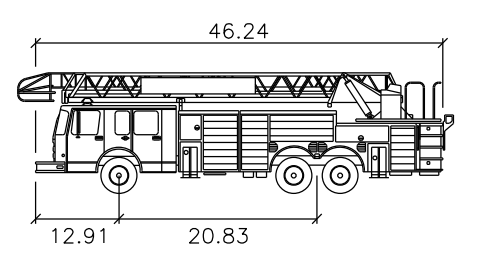
FAP-1

400' Fire Hydrant Radius

Existing/Proposed Fire Hydrant

26x40 feet Truck Staging Area

Notes:
 1. Dimension noted are face of curb to face of curb



Large Fire	feet
Width	: 8.00
Track	: 8.00
Lock to Lock Time	: 6.0
Steering Angle	: 40.0

Fire Access Plan Data Table

Description	Value	Unit
a) Building Height	41.50	feet
b) Building Square Footage (typical)	954,720	square feet
c) Building fire suppression information including any proposed use of sprinkler systems, fire alarm systems, whether fire extinguishers are needed.		

Sprinkler: K 16.8 ESFR Sprinklers <40 AFF and K 22.4 ESFR Sprinklers > 40' AFF with a 2,000 gpm pump. All design in compliance with NFPA 13 Guidelines. Fire Alarm: Automated Fire Alarm Detection/Notification System: typical of Fire Lite or equal capable of facilitating the office and warehouse areas of the building.

d) General description of business to be conducted within each building including: will there be rack storage in the building, will there be storage of combustible materials over twelve feet in height, clearance of sprinkler heads and stored materials (18 inch minimum).

Combination of typical of racked product storage and floor storage of products. Minimum clearances will be adhered to. In Rack systems are not anticipated at this time.