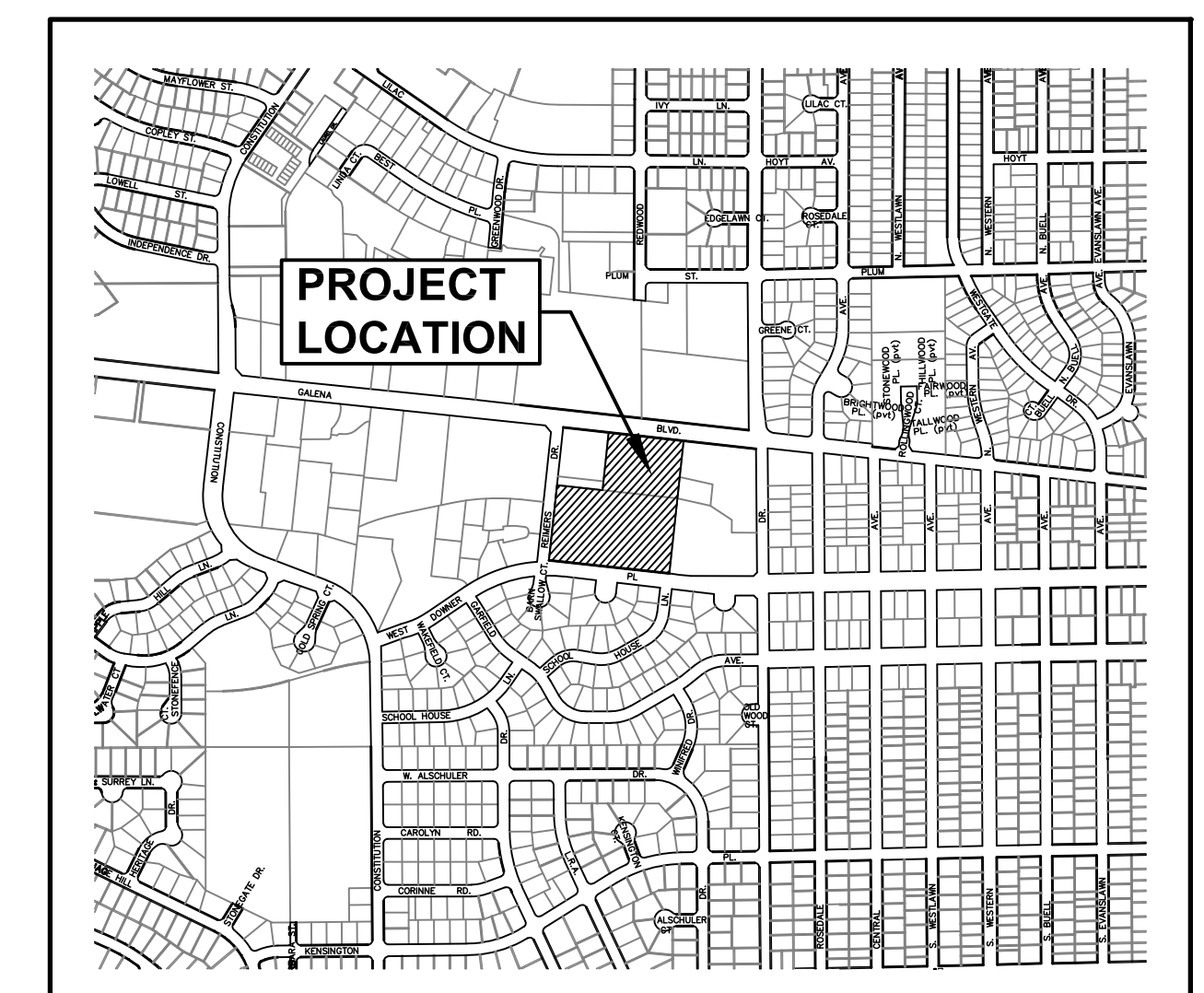


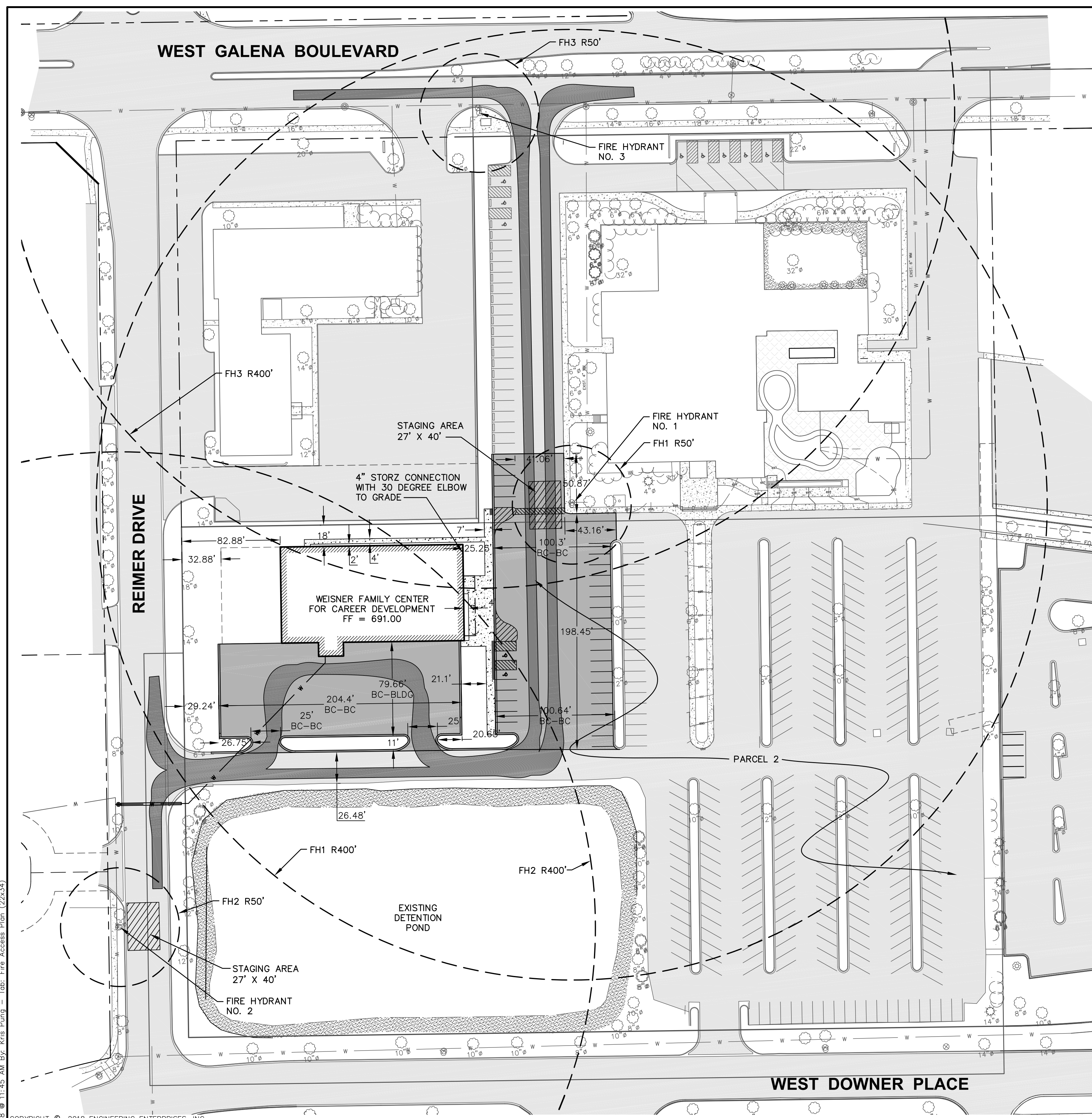
FIRE ACCESS PLAN

FOR WEISNER FAMILY CENTER FOR CAREER DEVELOPMENT

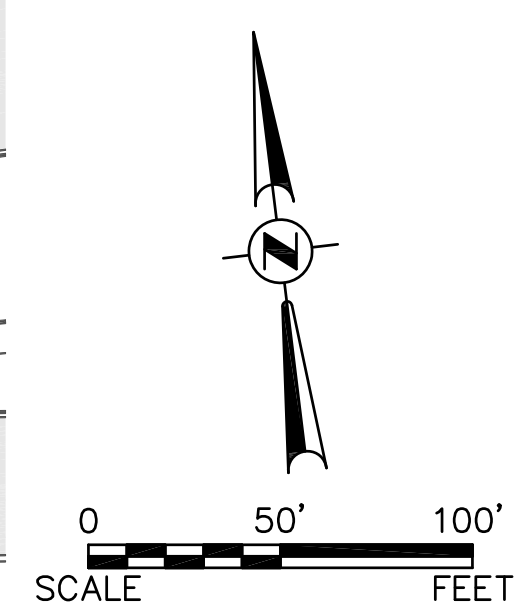
CITY OF AURORA
DUPAGE COUNTY, ILLINOIS



LOCATION MAP
1" = 1,000'



EXISTING	DESCRIPTION	PROPOSED
	SANITARY SEWER	
	STORM SEWER	
	END SECTION	
	ROOF DRAIN CONNECTION	
	WATER MAIN & SIZE	
	WATER SERVICE & BOX	
	SEWER SERVICE	
	CONTOUR	
	GAS MAIN	
	TELEPHONE CABLE	
	FIBER OPTIC	
	OVERHEAD UTILITY	
	CURB AND GUTTER	
	FENCING	
	SILT FENCE	
	MANHOLE	
	CATCH BASIN	
	INLET	
	HYDRANT	
	VALVE VAULT	
	TREE	
	ELEVATION	
	TRENCH BACKFILL	
	STREET LIGHT	
	SIGNS	
	FOUND IRON PIPE	
	GUY WIRE	
	FLAG POLE	
	UTILITY POLE	
	UTILITY PEDESTAL	
	HANDHOLE	
	STRAW BALES	
	ITEM DESIGNATED FOR REMOVAL	
	TREE PROTECTION REQUIRED	
	BITUMINOUS PAVEMENT	
	BITUMINOUS BIKE PATH	
	CONCRETE	
	GRAVEL	
	PERMEABLE PAVERS	



Fire Access Plan Data Table		
Description	Value	Unit
a) Building Height	25.00	feet
b) Building Square Footage (typical)	12,500	square feet
c) Building fire suppression information including any proposed use of sprinkler systems, fire alarm systems, whether fire extinguishers are needed: Yes		
d) General description of business to be conducted within each building including: will there be rack storage in the building, will there be storage of combustible materials over twelve feet in height, clearance of sprinkler heads and stored materials (18 inch minimum): Administration building: office and meeting spaces. West Aurora Learning Center: classroom, m		

Plotfile: May 16, 2018, 11:45 AM, By: Kris Plung - Tab: Fire Access Plan (22x34)

Engineering Enterprises, Inc.
CONSULTING ENGINEERS
52 Wheeler Road
Sugar Grove, Illinois 60554
630.466.6700 / www.eeiweb.com

WEST AURORA SCHOOL DISTRICT 129
1877 WEST DOWNER PLACE
AURORA, IL 60506

NO.	DATE	REVISIONS

WEISNER FAMILY CENTER FOR CAREER DEVELOPMENT

FIRE ACCESS PLAN

DATE:	APRIL	2018
PROJECT NO:	P17042	
FILE:	P17042-FIRE	
SHEET	1	OF 1

Path: H:\S\SR\PROJ\17042\DWG\FINAL_ENG\P17042-FIRE