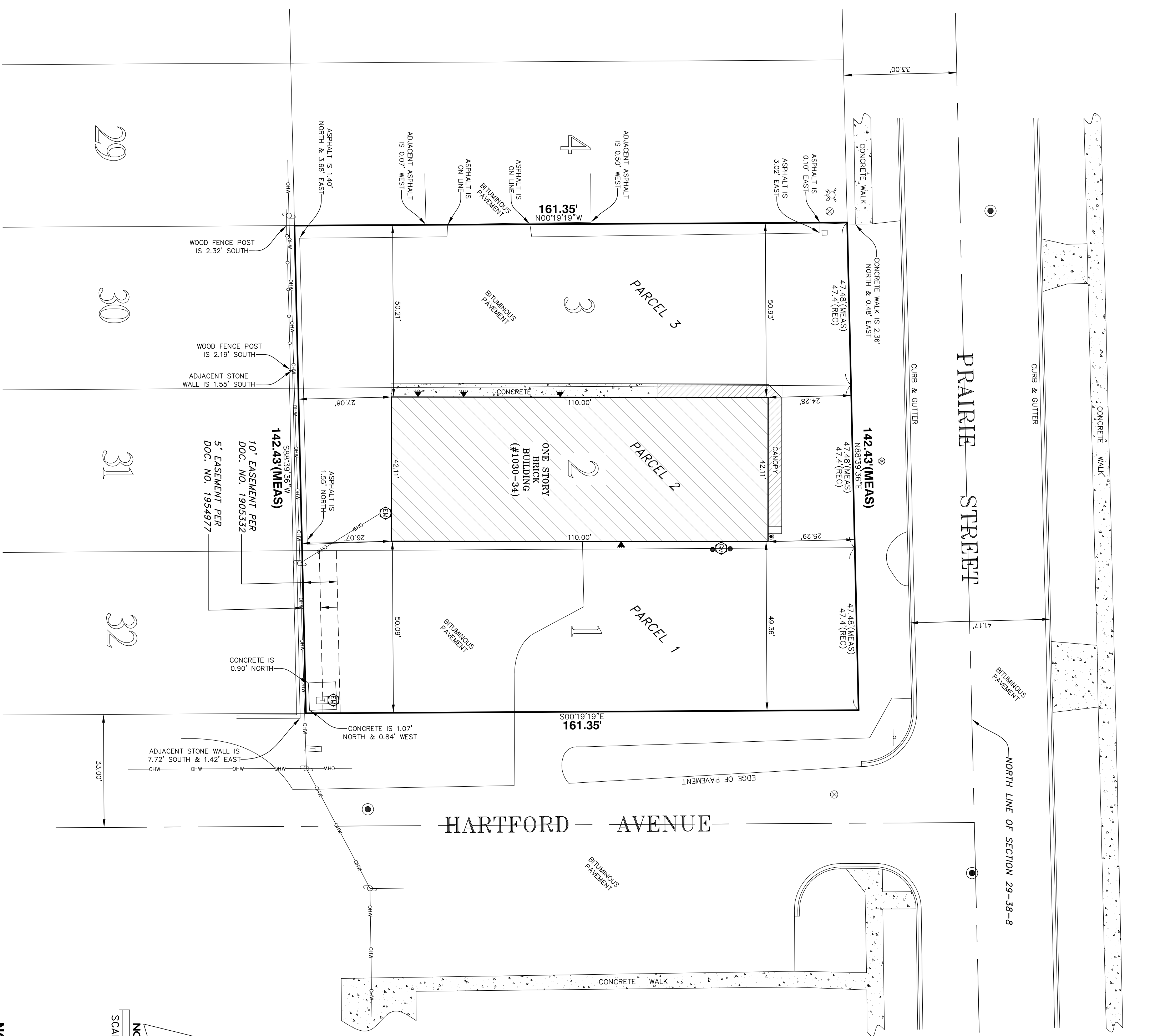


A.L.T.A. / A.C.S.M. LAND TITLE SURVEY

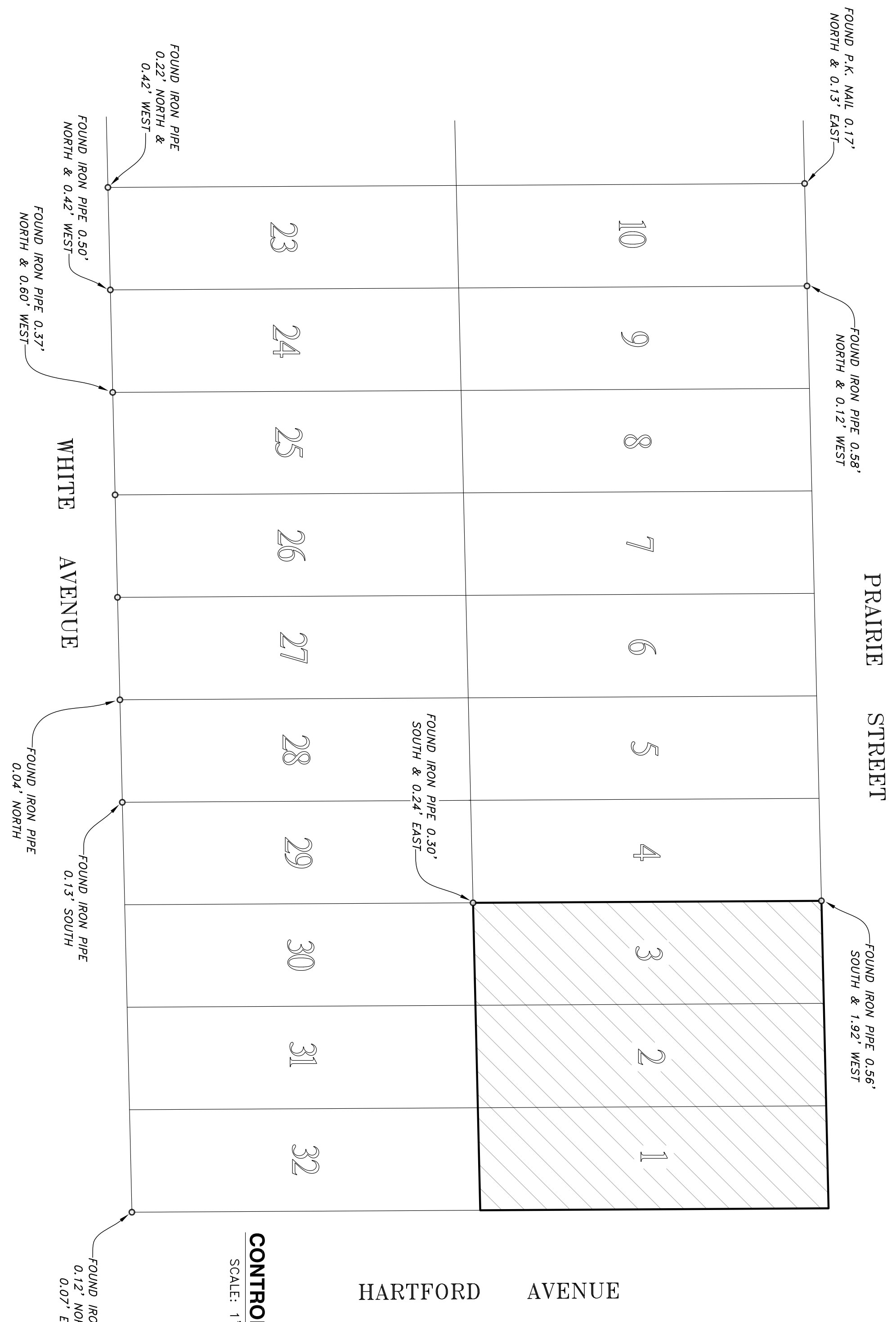
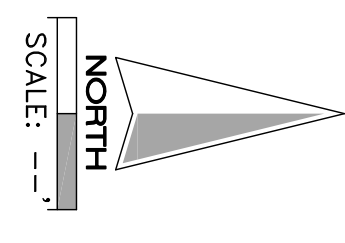
OF

PARCEL 1: LOT 1 IN BLOCK 6 OF HERCULES PARK ADDITION TO AURORA, IN THE CITY OF AURORA, KANE COUNTY, ILLINOIS.
 PARCEL 2: LOT 2 IN BLOCK 6 OF HERCULES PARK ADDITION TO AURORA, IN THE CITY OF AURORA, KANE COUNTY, ILLINOIS.
 PARCEL 3: LOT 3 IN BLOCK 6 OF HERCULES PARK ADDITION TO AURORA, IN THE CITY OF AURORA, KANE COUNTY, ILLINOIS.



HARTFORD AVENUE

PRAIRIE STREET

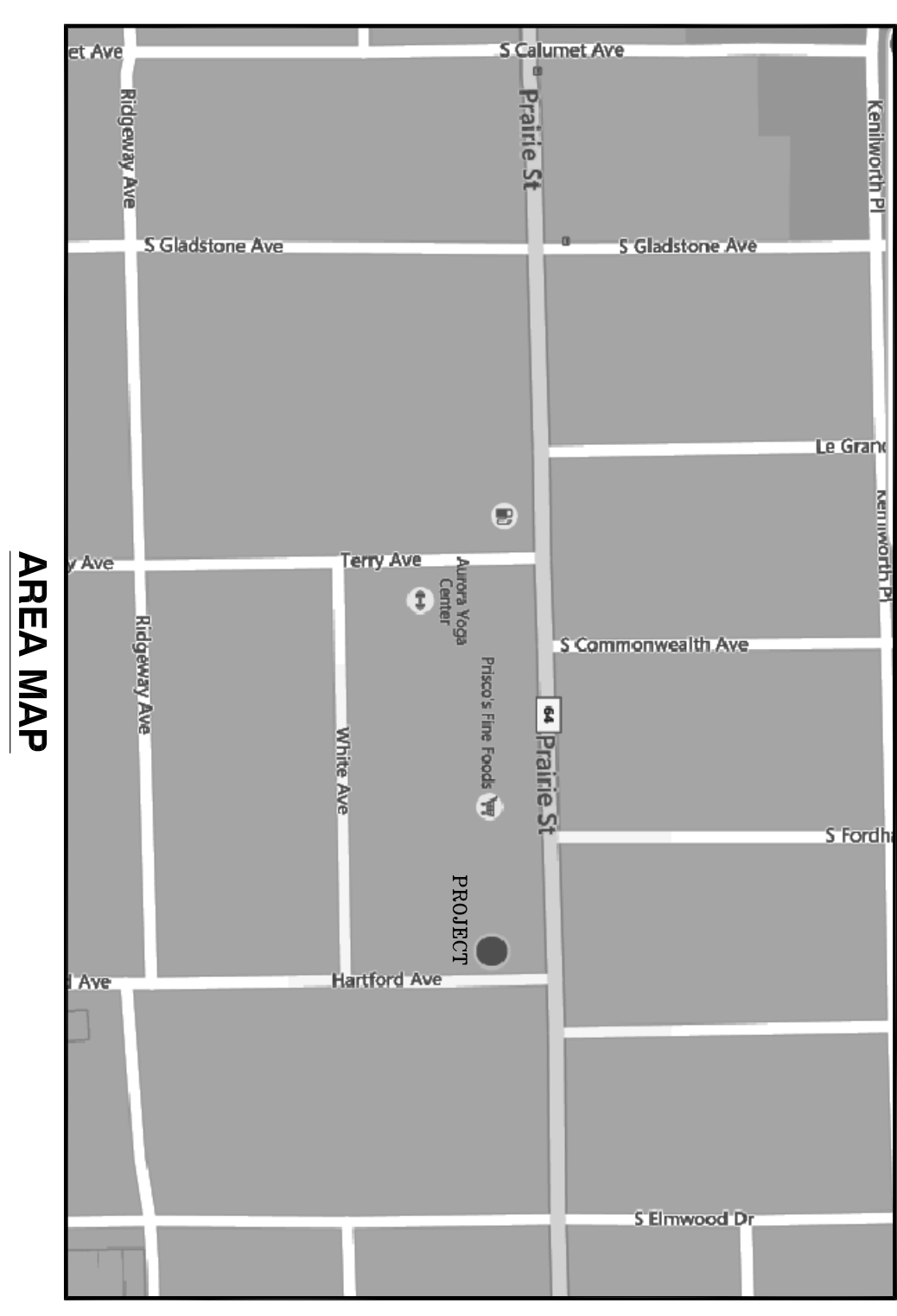


CONTROL MAP
SCALE: 1"=40'

NOTES

1. ANY UTILITIES SHOWN ARE LOCATED BY PHYSICAL EVIDENCE. FOR ACCURATE LOCATIONS FIELD EXCAVATE AND VERIFY.
2. ANY DISCREPANCIES DISCOVERED UPON THE GROUND SHOULD BE PROMPTLY REPORTED TO THE SURVEYOR FOR EXPLANATION OR CORRECTION.
3. REGARDING MATTERS OF RECORD WE HAVE RELIED UPON CHICAGO TITLE INSURANCE COMPANY'S COMMITMENT NUMBER 15WSA370046AU, DATED MARCH 10, 2015.
4. BASIS OF BEARINGS, SOUTH LINE OF PRAIRIE AVENUE AS SHOWN: N88°39'38"E (ASSUMED).
5. FENCE LOCATIONS ARE MADE TO CENTER OF POST.

SYMBOL LEGEND			
⊙	CATCHBASIN	⊠	QUARRAIL
●	MANHOLE	—(—	HEADWALL
⊙	STORM MANHOLE	— —	END SECTION
⊙	WATER VALVE	⊠	PHONE
⊙	HYDRANT	— —	OVERHEAD WIRES
⊙	VALVE & VAULT	— —	DEPRESSED CURB
⊙	GAS VALVE	⊠	BUFFALO BOX
⊙	UTILITY POLE W/ GUY	⊙	TELEPHONE MANHOLE
⊙	UTILITY POLE	⊙	ELECTRIC MANHOLE
⊙	STREET SIGN	⊙	DOWNSPOUT
⊙	STREET LIGHT	⊙	DRAIN TILE
⊙	DOORWAY	⊙	SIGNAL CONTROL BOX
⊙	TRAFFIC SIGNAL	⊙	VENT
⊙	HANDHOLE	⊙	UTILITY PIPE
⊙	TELEPHONE CANISTER	⊙	GAS METER
⊙	COK. ED. CANISTER	⊙	ELECTRIC METER
⊙	CABLE CANISTER/BOX	⊙	WATER METER
⊙	TRANSFORMER	⊙	BORING LOCATION
⊙	WATERMAIN STUB	⊙	LIGHT
⊙	SANITARY SEWER STUB	⊙	STREET LIGHT
⊙	STORM SEWER STUB	⊙	STAND PIPE
⊙	ELECTRIC OUTLET	(XX)	RECORD
⊙	TELEPHONE BOX	(M)	MEASURED
⊙		(I)	DEEDED



AREA MAP

PREPARED FOR: MICHAEL POULAKIDAS
 JOB ADDRESS: 1030-1034 PRAIRIE ST., AURORA, IL.
 JOB NO.: 15-05-0142
 DRAWN BY: KAB
NEKOLA SURVEY, INC.
 PROFESSIONAL LAND SURVEYING SERVICES
 WWW.NEKOLASURVEY.COM
 400 N. SCHMIDT RD., STE. 203
 BOLLINGBROOK, ILLINOIS 60440
 (630) 226-1530 PHONE (630) 226-1430 FAX

SITE INFORMATION
 LOT AREA = 22,977 SQ. FT.
 BUILDING FOOTPRINT AREA = 4,632 SF/20%