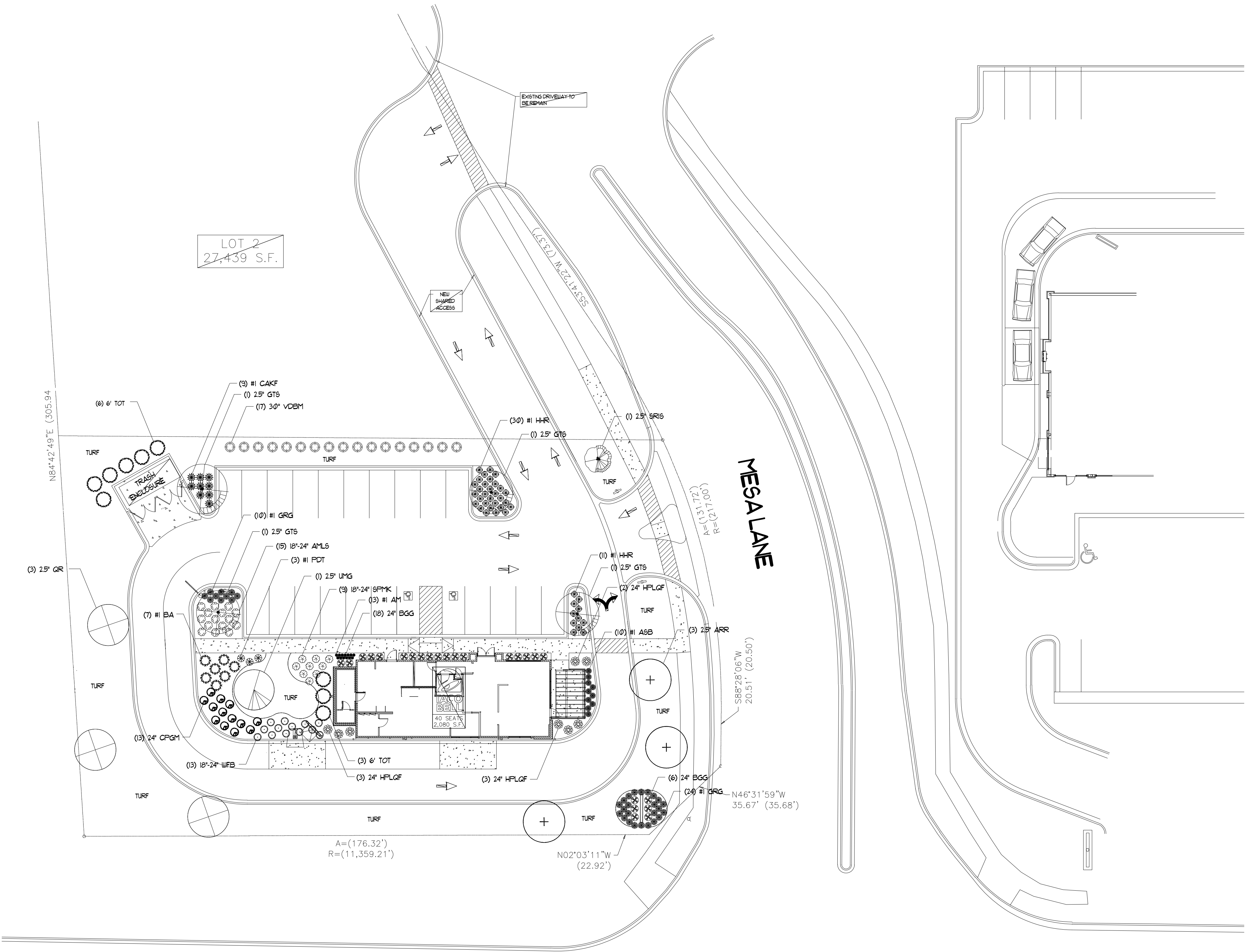
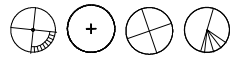


LANDSCAPE PLAN FOR 1504 MESA LANE
AURORA, ILLINOIS



LANDSCAPE DATA TABLE: PLANTING MATERIALS KEY

CANOPY TREES (MINIMUM SIZE 2.5 CALIPER) COUNT: 11



UNDERSTORY TREES (MINIMUM SIZE 2.5 CALIPER OR 8' IF MULTI-STEMMED) COUNT: 1



EVERGREEN TREES (MINIMUM SIZE 6 FEET) COUNT: 3



DECIDUOUS SHRUBS (MINIMUM OF 18 INCHES) COUNT: 62



EVERGREEN SHRUBS (MINIMUM OF 18 INCHES) COUNT: 37



PERENNIALS COUNT: 108



ORNAMENTAL GRASSES COUNT: 9



TURF (SEEDED) SQUARE FOOTAGE: 7,500

LANDSCAPE DATA TABLE: CTE'S PROVIDED

	CTE VALUE	COUNT PROVIDED	TOTAL CTE'S PROVIDED
CANOPY TREES	1	11	11
EVERGREEN TREES	1/3	9	3
UNDERSTORY TREES	1/3	1	.33
DECIDUOUS SHRUBS	1/20	62	3.1
EVERGREEN SHRUBS	1/20	37	1.85
TOTAL		120	19.28

PLANT LIST

Qty.	Common Name	Botanical Name	Size	Remarks	Key
3	Redpointe Maple	Acer rubrum 'Redpointe'	2.5"	B&B	ARR
4	Skyline Locust	Gleditsia triacanthos 'Skyline'	2.5"	B&B	GTS
3	Northern Red Oak	Quercus rubra	2.5"	B&B	QR
1	Triumph Elm	Ulmus 'Morton Glossy'	2.5"	B&B	UMG
1	Ivory Silk Japanese Tree Lilac	Syringa reticulata 'Ivory Silk'	2.5"	B&B	SRIS
9	Techny Arborvitae	Thuja occidentalis 'Techny'	6'	B&B	TOT
15	Low Scape Mound Chokeberry	Aronia melanocarpa 'Low Scape'	18"-24"	Cont.	AMLS
24	Green Gem Boxwood	Buxus 'Green Gem'	24"	Cont.	BGG
13	Golden Mop Japanese Cypress	Chamaecyparis pisifera 'Golden Mop'	24"	Cont.	CPGM
8	Little Quick Fire Hydrangea	Hydrangea paniculata 'Little Quick Fire'	24"	Cont.	HPLQF
9	Miss Kim Lilac	Syringa patula 'Miss Kim'	18"-24"	Cont.	SPMK
17	Blue Muffin Viburnum	Viburnum dentatum 'Blue Muffin'	30"	Cont.	VDBM
13	Spilled Wine Weigela	Weigela florida 'Bokraspiwi'	18"-24"	Cont.	WFB
13	Millenium Allium	Allium 'Millenium'	#1	Pots	AM
10	Summer Beauty Allium	Allium 'Summer Beauty'	#1	Pots	ASB
7	Blue False Indigo	Baptisia australis	#1	Pots	BA
9	Karl Foerster Reed Grass	Calamagrostis acutiflora 'Karl Foerster'	#1	Pots	CAKF
34	Rozanne Geranium	Geranium 'Rozanne - Gerwat'	#1	Pots	GRG
41	Happy Returns Daylily	Hemerocallis 'Happy Returns'	#1	Pots	HHR
3	Dark Towers Beardtongue	Penstemon 'Dark Towers'	#1	Pots	PDT

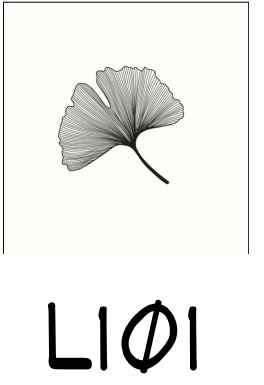
REVISIONS:
03.18.21 (CITY REVIEW)

DOWDEN DESIGN GROUP
LANDSCAPE ARCHITECTURE, DESIGN & PLANNING
P.O. BOX 415, LIBERTYVILLE, IL 60048
DOWDENDSGROUP.COM PHONE: (847) 362-1254

LANDSCAPE PLAN FOR 1504 MESA LANE
AURORA, ILLINOIS

LANDSCAPE
PLAN

DATE: 02.02.21
SCALE: 1"=20'
DRAWN: CJD



REVISIONS:
Ø3.18.21 (CITY REVIEW)



- 1) THE CONTRACTOR SHALL PROVIDE AND INSTALL ALL PLANT MATERIALS IN QUANTITIES SUFFICIENT TO COMPLETE PLANTING AS SHOWN ON THE DRAWING. ALL PLANTS SHALL COMPLY WITH THE REQUIREMENTS OF THE CURRENT AMERICAN STANDARD FOR NURSERY STOCK, PUBLISHED BY THE AMERICAN NURSERY AND LANDSCAPE ASSOCIATION. PLANTS SHALL MEET SIZE, GENUS, SPECIES AND VARIETY AND BE IN GOOD HEALTH, FREE OF INSECTS, DISEASES, OR DEFECTS. NO "PARK GRADE" MATERIAL SHALL BE ACCEPTED. TREES NOT EXHIBITING A CENTRAL (OR SINGLE) LEADER WILL BE REJECTED UNLESS CALLED IN THE PLANT LIST AS MULTI-STEM. QUANTITY LISTS ARE SUPPLIED AS A GUIDANCE. THE LANDSCAPE CONTRACTOR SHALL VERIFY ALL QUANTITIES AND, IN CASE OF DISCREPANCY, THE PLAN SHALL PREVAIL. NO PLANTS ARE TO BE CHANGED OR SUBSTITUTED WITHOUT APPROVAL FROM A REPRESENTATIVE OF JAMES DOWDEN & ASSOCIATES, INC.
- 2) ALL PLANTS SHALL BE WATERED DURING THE FIRST 24 HOUR PERIOD FOLLOWING INSTALLATION. A WATERING SCHEDULE MUST BE AGREED UPON WITH THE OWNER (BEFORE PLANTINGS ARE INSTALLED) OF WHEN, WHEN AND HOW PLANT MATERIALS ARE TO BE PROPERLY WATERED. THE LANDSCAPE CONTRACTOR SHALL VERIFY PROPER WATERING IS BEING DONE FOR THE ESTABLISHMENT AND HEALTH OF ALL PLANT MATERIALS. THE LANDSCAPE CONTRACTOR SHALL WARRANT ALL PLANT MATERIALS FOR ONE YEAR FROM THE TIME OF INSTALLATION AND PROJECT ACCEPTANCE.
- 3) PLANTS SHALL BE BALLED AND BURLAPPED UNLESS OTHERWISE NOTED ON THE LANDSCAPE PLAN. NO ROOT BOUND MATERIAL SHALL BE ACCEPTED AND ALL WRAPPING MATERIALS MADE OF SYNTHETICS OR PLASTICS SHALL BE REMOVED AT THE TIME OF PLANTING. IT IS THE OPTION OF THE LANDSCAPE CONTRACTOR TO ROLL BACK BURLAP FROM THE TOP OF THE ROOT BALL.
- 4) RECOMMENDED MULCH DEPTH IS THREE INCHES (3") OF SHREDDED HARDWOOD BARK. THE LANDSCAPE CONTRACTOR SHALL PROVIDE OVERLAPPING MULCH BEDS TO PREVENT MULCH VOLCANOES; MULCH BEDS SHALL EXTEND A MINIMUM OF TWO FEET (2') BEYOND THE CENTER OF A TREE OR SHRUB. MULCH MUST BE PULLED BACK AT LEAST TWO INCHES (2") FROM THE BASE OF A TREE SO THE BASE OF THE TRUNK AND ROOT CROWN ARE EXPOSED.
- 5) PREPARE ALL PERENNIAL BEDS WITH ONE CUBIC YARD OF GARDEN COMPOST PER 10 0 SF AND THE COMPOST SHALL BE ROTOTILLED TO AN 8" DEPTH.
- 6) ALL PLANTS SHALL BE SET PLUMB. IT IS THE OPTION OF THE LANDSCAPE CONTRACTOR TO STAKE DECIDUOUS TREES BUT IT IS ALSO THE RESPONSIBILITY OF THE LANDSCAPE CONTRACTOR TO GUARANTEE THE PLANTS REMAIN PLUMB UNTIL THE END OF THE GUARANTEE PERIOD.
- 7) TREES SHALL BE INSTALLED A MINIMUM OF FIVE FEET (5') HORIZONTALLY FROM UNDERGROUND ELECTRICAL FEEDERS, SANITARY SEWERS, SANITARY SERVICES, WATER MAINS, AND WATER SERVICES. TREES SHALL BE INSTALLED A MINIMUM OF TEN FEET (10') HORIZONTALLY FROM UTILITY STRUCTURES INCLUDING, BUT NOT LIMITED TO, MANHOLES, VALVE VAULTS AND VALVE BOXES. SHADE TREES SHALL BE A MINIMUM OF TEN FEET (10') FROM ALL LIGHT POLES AND ALL SHRUBS SHALL BE A MINIMUM OF THREE TO FIVE FEET (3'-5') FROM ALL FIRE HYDRANTS.
- 8) THE LANDSCAPE CONTRACTOR SHALL LOCATE THE EXISTENCE OF ALL UNDERGROUND UTILITIES PRIOR TO STARTING WORK. THE LANDSCAPE CONTRACTOR MUST ALSO KEEP THE PAVEMENT AND WORK AREAS IN NEAT AND ORDERLY CONDITION THROUGHOUT THE CONSTRUCTION PROCESS. THE LANDSCAPE CONTRACTOR SHALL ACQUAINT HIMSELF WITH AND VERIFY WORKING CONDITIONS IN ADVANCE OF SUBMITTING A PROPOSAL. FAILURE TO RECOGNIZE INHERENT RESPONSIBILITIES DOES NOT RELIEVE THE CONTRACTOR OF OBLIGATIONS DUE TO MISCALCULATIONS.
- 9) PROPERTY OWNERS SHALL BE RESPONSIBLE FOR MAINTAINING ALL LANDSCAPING SHOWN ON THE APPROVED PLANS THROUGHOUT THE LIFE OF THE DEVELOPMENT.
- 10) ALL TURF SHALL BE PREMIUM BLUEGRASS MIX (4.5 LBS/1,000 SF) WITH NORTH AMERICAN GREEN DS75, OR EQUIVALENT, EROSION CONTROL BLANKET IN ALL DISTURBED AREAS.

20% MIDNIGHT KENTUCKY BLUEGRASS
20% DENIM KENTUCKY BLUEGRASS
20% LANGARA KENTUCKY BLUEGRASS
20% BLUESTAR KENTUCKY BLUEGRASS
10% PRIZM PERENNIAL RYEGRASS
10% SUNSHINE PERENNIAL RYEGRASS

DOWDEN DESIGN GROUP
LANDSCAPE ARCHITECTURE, DESIGN & PLANNING
P.O. BOX 415, LIBERTYVILLE, IL, 60048
DOWDENDESIGNGROUP.COM PHONE: (847) 362-1254

LANDSCAPE PLAN FOR 1504 MESA LANE
AURORA, ILLINOIS

LANDSCAPE
PLAN

DATE: 02.02.21
SCALE: NONE
DRAWN: CJD


$$\text{Li}\phi_2$$