

GENERAL NOTES

- THIS INSTALLATION SHALL BE IN COMPLIANCE WITH THE CITY OF AURORA IL BUILDING CODES OF ORDINANCES, LOCAL AMENDMENTS AND NATIONAL CODES INCLUDING BUT NOT LIMITED TO: 2015IBC, 2014NEC, 2015IECC, AND NFPA72.
- BEFORE COMMENCING WORK THE CONTRACTOR SHALL VISIT THE JOB SITE AND FULLY INFORM HIMSELF OR HERSELF OF ALL CONDITIONS THAT AFFECT THE WORK. EXAMINE THE DRAWINGS AND SPECIFICATIONS SHEET, AND SUBMIT ANY QUESTIONS IN WRITING TO THE ARCHITECT AND ENGINEER.
- ALL ELECTRICAL DRAWINGS ARE TO BE READ IN CONJUNCTION WITH THE PROJECT SPECIFICATION SHEET AND ALL OTHER DRAWINGS RELATED TO THE PERFORMANCE OF THE WORK.
- THE CONTRACTOR RESPONSIBLE FOR THE EXECUTION OF THIS WORK SHALL BECOME THOROUGHLY FAMILIAR WITH THE PROJECT BEFORE COMMENCING ANY WORK. THE PROJECT DRAWINGS FORM THE BASIS OF THIS CONTRACT REQUIREMENTS AND INCLUDE THE TYPE AND GRADE OF MATERIALS TO BE INSTALLED, EQUIPMENT TO BE FURNISHED, THE MANNER BY WHICH TO BE INSTALLED AND WHERE TO BE LOCATED. IN THE EVENT OF A CONFLICT BETWEEN THE PROJECT SPECIFICATIONS AND DRAWINGS & THE MOST STRICT METHOD GOVERN UNLESS THE ARCHITECT/ENGINEER DIRECTS OTHERWISE.
- THE ELECTRICAL CONTRACTOR SHALL CHECK CAREFULLY ALL CONSTRUCTION DRAWINGS THAT ARE PART OF THIS PROJECT TO ENSURE THAT NO FIXTURE, OUTLET, ALARM STATION, CONTROL DEVICE, POWER WIRING DEVICE, ETC., IS OMITTED. HE/SHE SHALL CONSULT ALL TRADES FURNISHING EQUIPMENT AND OBTAIN FROM THEM ALL DATA. IN SOME CASES EQUIPMENT, FIXTURES AND DEVICES ARE SHOWN ONLY. ASCERTAIN AND PROVIDE THE WIRING AND CONTROL STATIONS REQUIRED FOR THE PROPER FUNCTION OF BUILDING EQUIPMENT. NO EXTRA CHARGES SHALL BE ACCEPTED BY OWNER AFTER BIDDING FOR SUCH EQUIPMENT AND LABOR.
- EQUIPMENT LABELS AND INSTRUCTIONS REGARDING THE APPLICATION AND INSTALLATION OF THE LISTED EQUIPMENT SHALL BE FOLLOWED TO INSURE THAT THE EQUIPMENT IS BEING INSTALLED IN ACCORDANCE WITH THE MANUFACTURER'S LISTING INSTRUCTIONS. THE TEMPERATURE RATING OF THE EQUIPMENT TERMINATIONS MUST BE CAREFULLY CORRELATED WITH THE CONDUCTOR AMPACITY TO PREVENT OVERHEATING AND PREMATURE FAILURE.
- INSTALL ELECTRICAL DEVICES AS INDICATED IN THIS SET OF DRAWINGS. ADJUST FINAL DEVICE LOCATIONS AS REQUIRED TO ACCOMMODATE WORK. COORDINATE WITH ALL TRADES INVOLVED AND WITH ARCHITECTURAL CASEWORK AND ELEVATIONS DRAWINGS. NOTIFY THE ENGINEER AND/OR THE ARCHITECT IF ANY CONFLICTS ARE FOUND PRIOR TO BIDDING PROJECT. INSTALL CONDUIT AND BOXES TO CLEAR EMBEDDED DUCTS, OPENINGS AND OTHER STRUCTURAL FEATURES.
- ALL LIGHTING FIXTURES ARE TO BE LOCATED AS REQUIRED ON THE JOB TO CLEAR DUCTS, PIPING, EQUIPMENT, AND/OR MECHANICAL UNITS.
- CONDUIT RUNS SHOWN ON DRAWINGS ARE DIAGRAMMATIC. ALL CONDUITS SHALL RUN CONCEALED, EXCEPT IN EQUIPMENT ROOMS AND WHERE APPROVED BY THE ARCHITECT.
- FURNISH AND INSTALL EQUIPMENT DISCONNECT SWITCHES IN STRICT COMPLIANCE WITH CODE REQUIREMENTS.
- ADJACENT POWER AND DATA DEVICES SHALL BE SPACED NO MORE THAN 4" APART. PROVIDE JUNCTION BOX MOUNTING BRACKET BETWEEN STUDS AS NEEDED. SEE DETAIL THIS SHEET FOR ADDITIONAL INFORMATION.
- ALL RECEPTACLES, VOICE AND DATA OUTLETS SHALL BE MOUNTED PER MOUNTING HEIGHT LEGEND, UNLESS OTHERWISE NOTED. SEE DETAIL THIS SHEET FOR ADDITIONAL INFORMATION. ALL DEVICES SHALL BE NEW. REFER TO ARCHITECTURAL CASEWORK DRAWINGS AND ARCHITECTURAL ELEVATIONS FOR EXACT DEVICES MOUNTING HEIGHTS.
- REFER TO FIRE ALARM SHEET IN THIS SET OF DRAWINGS FOR FIRE ALARM SYSTEM INFORMATION.
- DETERMINE, IN ADVANCE OF PURCHASE, THAT ALL ELECTRICAL MATERIALS AND EQUIPMENT TO BE INSTALLED SHALL FIT INTO THE ROOM OR SPACE ALLOCATED, AS INDICATED ON THE DRAWINGS, ALLOWING SUFFICIENT CLEARANCE FOR THE SAFE SERVICE AND/OR MAINTENANCE OF RELATED EQUIPMENT, INCLUDING THAT OF OTHER TRADES.
- ALL CIRCUITS SHALL HAVE AN EQUIPMENT GROUNDING CONDUCTOR INSTALLED. COLOR OF GROUNDING CONDUCTOR SHALL BE GREEN. SIZE OF GROUNDING CONDUCTOR SHALL BE AS REQUIRED PER NEC ARTICLE 250.122.
- ALL BRANCH CIRCUITS SHALL HAVE A DEDICATED NEUTRAL CONDUCTOR INSTALLED UNLESS OTHERWISE INDICATED. COLOR OF NEUTRAL CONDUCTOR SHALL BE WHITE.
- ALL CONDUCTOR SHALL BE MADE OF COPPER. MINIMUM WIRE SIZE SHALL BE #12AWG UNLESS OTHERWISE INDICATED. UTILIZE SOLID CONDUCTORS FOR WIRE GAGES UP TO #12AWG AND STRANDED CONDUCTOR FOR GAGES #10AWG AND LARGER.
- SPECIAL RECEPTACLES PLUG CONFIGURATION REQUIREMENTS SHALL BE COORDINATED WITH EQUIPMENT PLUG REQUIREMENTS PRIOR TO INSTALLATION.
- ALL FEEDER AND BRANCH CIRCUIT WIRING INSTALLED INDOORS SHALL USE THHN INSULATION (90F). ALL WIRING INSTALLED OUTDOORS SHALL USE THWN INSULATION (75F). REFER TO SPECIFICATION SHEET FOR COLOR CODED REQUIREMENTS.
- ALL POWER WIRING SHALL BE INSTALLED IN A DEDICATED RACEWAY SYSTEM. MINIMUM RACEWAY SIZE SHALL BE 3/4" UNLESS OTHERWISE INDICATED. CONTRACTOR SHALL SIZE ALL CONDUITS SO AS TO NOT EXCEED 40% OF CONDUIT FILLING CAPACITY. WHEN MORE THAN THREE CURRENT CARRYING CONDUCTORS ARE INSTALLED IN THE SAME CONDUIT AND AMBIENT TEMPERATURES ADJUSTMENT FACTORS PER ELECTRICAL CODE TABLES 310.15(B)(2)(A), 310.15(B)(3)(A) SHALL BE APPLIED.
- ALL CIRCUITS SERVING EMERGENCY EXIT SIGNS, NIGHT LIGHTS AND EXTERIOR LIGHTS SHALL UTILIZE #10 WIRE TO MINIMIZED VOLTAGE DROP UNLESS OTHERWISE INDICATED.
- ALL BREAKERS SERVING FIRE ALARM EQUIPMENT AND EXIT SIGNS SHALL HAVE LOCK-OUT DEVICE INSTALLED UNLESS OTHERWISE INDICATED.
- DISTRIBUTION PANELS AND BRANCH CIRCUIT PANELBOARDS, SHALL BE LABELED WITH PANEL NAME AND ALSO HAVE A PANEL DIRECTORY INSTALLED. UTILIZE TYPE WRITER AS A MINIMUM FOR COMPLIANCE. HAND WRITTEN CARD DIRECTORIES ARE NOT ACCEPTABLE.
- PANELBOARDS, DISCONNECT SWITCHES, ETC. SHALL BE LABEL WITH A READILY VISIBLE LABEL PER NFPA 70E, STANDARD FOR SAFETY IN THE WORKPLACE. LABEL SHALL BE CLEARLY VISIBLE TO PERSONNEL AND SHALL READ "CAUTION ARC FLASH HAZARD" ALSO LABELS SHALL INDICATE THE AVAILABLE SHORT CIRCUIT CURRENT AT EQUIPMENT, PPE, VOLTAGE, PHASES, SIZE AND COLOR OF TEXT SHALL BE PER STANDARD.
- ALL FINAL CONNECTIONS TO MOTORS AND VIBRATING EQUIPMENT SHALL BE DONE WITH LIQUID TIGHT FLEXIBLE METAL CONDUIT. INSTALL GREEN GROUNDING CONDUCTOR.
- ALL FINAL BREAKERS AND CONDUCTORS SIZES SERVING MECHANICAL EQUIPMENT SHALL BE COORDINATED WITH MECHANICAL SHOP DRAWINGS AND CONTRACTOR PRIOR TO INSTALLATION. E.C. SHALL COORDINATE WITH HVAC CONTRACTORS EXACT POINT OF CONNECTION TO THE EQUIPMENT PRIOR TO ROUGH-IN.
- ALL EQUIPMENT INSTALLED OUTSIDE SHALL BE WEATHER PROOF RATED.

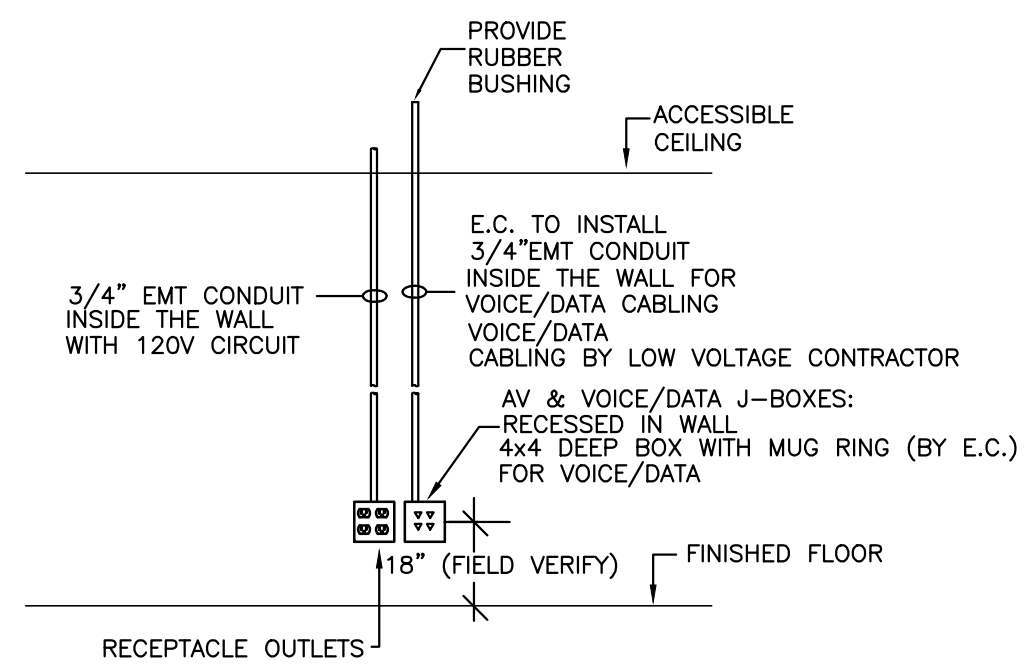
GENERAL NOTES (CONTINUE)

- REFER TO DRAWINGS FOR ADDITIONAL INFORMATION.
- INSTALL CONDUIT FROM THE TOP OF THE BAR JOIST.
 - LABEL ALL J-BOXES COVER PLATES, RECEPTACLES COVER PLATES WITH CIRCUIT INFORMATION AND PANEL SOURCE. UTILIZE P-TOUCH LABEL OR APPROVED EQUAL.
 - ALL MOUNTING HEIGHTS OF DEVICES SHALL BE COORDINATED WITH ARCHITECTURAL ELEVATIONS OR ARCHITECT PRIOR TO ROUGH-IN.
 - DO NOT INSTALL DEVICES IN DIFFERENT ROOMS BACK TO BACK. PROVIDE 6" SIDE BY SIDE IN BETWEEN.
 - WHEN APPLICABLE COORDINATE EXACT FURNITURE POWER REQUIREMENTS AND VOICE/DATA FEEDING CONNECTIONS AT EACH LOCATION PRIOR TO ROUGH-IN.
 - GENERAL USE RECEPTACLES SHALL BE WHITE IN COLOR WITH STEEL COVER PLATES. FINAL COLOR OF RECEPTACLES & COVER PLATES SHALL BE AS SELECTED BY THE OWNER.
 - E.C. SHALL INSTALL J-BOX AND CONDUIT FOR MECHANICAL THERMOSTATS. COORDINATE EXACT LOCATIONS WITH M.C. E.C. SHALL FURNISH AND INSTALL WIRING AND TERMINATE ALL LINE VOLTAGE THERMOSTATS.
 - FIRE PROOF ALL PENETRATIONS THRU WALLS AND FLOORS TO RE-STABLISH THE FIRE RATING OF PARTITION.
 - PROVIDE MULTI-GANG J-BOX FOR INSTALLATION OF WIRING DEVICES LOCATED AT THE SAME LOCATION UNLESS OTHERWISE INDICATED ON THE FLOOR PLANS. PROVIDE METALLIC DIVIDER PLATES BETWEEN DIFFERENT CIRCUITS IN THE SAME BOX.
 - ALL PULL BOXES AND JUNCTION BOXES SHALL BE SIZED PER ELECTRICAL CODE ARTICLE 314, TABLES 314.16 BASED IN THE AMOUNT OF CABLE AND CONDUITS ENTERING/LEAVING THE BOX.
 - VOICE/DATA/AUDIO VISUAL (AV) SYSTEMS CABLING AND EQUIPMENT SHALL BE PROVIDED BY LOW VOLTAGE CONTRACTOR. EC SHALL PROVIDE REQUIRED JUNCTION BOXES, CONDUIT, AND PULL STRUNG FOR ALL LOCATIONS.
 - FOR THE AREA OF WORK WITH DAMAGED, DETERIORATED, COMPROMISED OR MISSING FIREPROOFING CREATED OR EXPOSED DURING CONSTRUCTION SHALL BE RESTORED TO FULL PROTECTIVE CAPACITY.
 - ALL ELECTRICAL WORK SHALL MEET THE REQUIREMENTS OF THE 2015 INTERNATIONAL BUILDING CODE OR 2014 NATIONAL ELECTRICAL CODE

GAS PIPING:

- NATURAL GAS DISTRIBUTION PIPING SHALL BE SCHEDULE 40 BLACK PIPE WITH 150# MALLEABLE IRON FITTINGS.
- GAS PIPING GREATER THAN 2" INSIDE DIAMETER OR CARRYING MORE THAN 5 POUNDS(P.SIG) SHALL BE SCHEDULE 40 BLACK PIPE WITH STANDARD WELD FITTINGS.
- PIPE INSTALLED ABOVE GRADE OUTDOORS TO BE PAINTED.
- VALVES:
 - 1-1/4" AND SMALLER: BALL VALVE, BRASS OR BRONZE BODY, SCREWED CONNECTIONS, BLOW-OUT PROOF STEM, TEFLON SEALS AND U.L. LISTED FOR USE WITH NATURAL GAS. CONBRACO "APOLLO" SERIES 80-100, CRANE 9400 SERIES, MILWAUKEE BA-475, OR NIBCO T585-70-UL.
 - 1-1/2" AND LARGER: ECCENTRIC PLUG VALVE, CAST IRON BODY, 1-1/2" 2-1/2" THREADED AND 3"-4" FLANGED CONNECTIONS, BRONZE OR ELECTRO LESS NICKEL PLATED CAST IRON PLUG, CARBOXYLIC-NITRILEBUTADIENE (HYCAR) RESILIENT PLUG SEAL, CORROSION RESISTANT BEARINGS AND SEALS, CLASS 125, AND U.L. LISTED FOR USE WITH NATURAL GAS KEY PORT FIG. 425-1RS49.
- BEFORE FINAL EQUIPMENT CONNECTIONS ARE MADE, PNEUMATICALLY TEST GAS PIPING AT 15 PSIG AIR PRESSURE. THE PRESSURE TEST SHALL BE DEEMED ACCEPTABLE IF THE PIPING SYSTEM HOLDS THE PRESSURE FOR FOUR (4) HOURS. TESTING SHALL BE WITNESSED AND SIGNED BY THE OWNER.

ELECTRIC AND VOICE/DATA OUTLETS



NOTE:
 1-ADJACENT POWER AND DATA/PHONE DEVICES SHALL BE SPACED NO MORE THAN 4" APART. PROVIDE JUNCTION BOX MOUNTING BRACKET BETWEEN STUDS AS NEEDED.
 2-ALL RECEPTACLE OUTLETS SHALL BE PROVIDED W/ P-TOUCH LABEL WITH CIRCUIT # AND SOURCE PANEL TAGS

ELECTRICAL SYMBOL LIST

- ⊕# DUPLEX RECEPTACLE, # INDICATES CIRCUIT
- ⊖ SIMPLEX RECEPTACLE
- C ⊖ SIMPLEX RECEPTACLE CLOCK STYLE
- GFI ⊖ DUPLEX RECEPTACLE, GROUND FAULT CIRCUIT INTERRUPTER
- U ⊖ DUPLEX RECEPTACLE, W/2 USB PORTS
- ⊕# QUAD RECEPTACLE (# INDICATES CIRCUIT)
- ⊕# AC QUAD RECEPTACLE MOUNTED ABOVE THE COUNTER. REFER TO ARCHITECTURAL ELEVATIONS FOR EXACT MOUNTING HEIGHT
- AS ⊖ DUPLEX RECEPTACLE MOUNTED AT SWITCH HEIGHT
- ⊕# SPECIAL RECEPTACLE COORDINATE EXACT REQUIREMENTS WITH EQUIP. SERVING
- ⊕# FLUSH MOUNTED FLOOR BOX WITH DUPLEX RECEPTACLE
- ⊕# FLOOR BOX (REFER TO FLOOR PLAN FOR REQUIREMENTS: PWR, VOICE/DATA & AV)
- ⊕# POKE THRU SEE DRAWING FOR REQUIREMENTS
- ⊕# PULL BOX
- \$ TOGGLE SWITCH SPECIFICATION GRADE
- \$ D TOGGLE SWITCH WITH DIMMER
- \$ 3 3-WAY TOGGLE SWITCH
- \$ K KEYED SWITCH
- \$ M,K MOMENTARY CONTACT SWITCH - CENTER OFF
- \$ P RED PILOT LIGHT SWITCH (ON IN THE ON POSITION)
- \$ OS WALL SWITCH OCCUPANCY SENSOR
- \$ V VOLUME SWITCH
- ⊕# CEILING MOUNTED OCCUPANCY SENSOR
- DAY LAY SENSOR
- ⊕# PHOTOCELL FOR OVERRIDE TIME CLOCK FUNCTION
- ⊕# HEAVY DUTY FUSIBLE DISCONNECT SWITCH
- ⊕# HEAVY DUTY NON-FUSIBLE DISCONNECT SWITCH
- ⊕# JUNCTION BOX
- ⊕# SINGLE POLE DISCONNECT SWITCH TOGGLE STYLE
- ⊕# CONTROL TRANSFORMER WITH DISCONNECT SWITCH
- ⊕# MOTOR WITH MOTOR RATED DISCONNECT SWITCH.
- ⊕# HOT, NEUTRAL, GROUND CONDUCTOR IN RACEWAY
- ⊕# RACEWAY STUB UP TO ABOVE ACCESSIBLE CEILING WITH END BUSHING
- ⊕# CONDUIT CONCEALED IN WALL/ABOVE THE CEILING
- ⊕# CONDUIT IN CONCRETE SLAB/UNDERGROUND
- ⊕# EXPOSED CONDUIT
- ⊕# FLEXIBLE METAL CONDUIT
- ⊕# SLEEVE WITH END BUSHINGS ACC SIZE AS INDICATED IN DRAWINGS
- ⊕# (4x4 DEEP BOX WITH MUG RING AND ONE (1) 3/4" C. STUB UP VOICE OUTLET)
- ⊕# (4x4 DEEP BOX WITH MUG RING AND ONE (1) 3/4" C. STUB UP VOICE/DATA OUTLET)
- ⊕# (4x4 DEEP BOX WITH MUG RING AND ONE (1) 3/4" C. STUB UP AUDIO/VISUAL/DATA OUTLET)
- ⊕# (4x4 DEEP BOX WITH MUG RING AND ONE (1) 1 1/4" C. STUB UP TO ACC WITH END BUSHING)
- ⊕# FIRE ALARM REMOTE BOOSTER POWER SUPPLY
- ⊕# FIRE ALARM DOUBLE ACTION PULL STATION
- ⊕# WALL MOUNTED FIRE ALARM STROBE (DEVICE W/ A "C" IS CEILING MTD)
- ⊕# WALL MOUNTED FIRE ALARM HORN/STROBE (W/ A "C" IS CEILING MTD)
- ⊕# FIRE ALARM PHOTOELECTRIC SMOKE DETECTOR
- ⊕# FIRE ALARM HEAT DETECTOR (SEE DRAWINGS FOR TYPE) 135FIX, 200FIX, RATE OF RISE (ROR)
- ⊕# FIRE ALARM DUCT SMOKE DETECTOR
- ⊕# FIRE ALARM DUCT DETECTOR REMOTE KEYED TEST SWITCH
- ⊕# FIRE ALARM MONITOR MODULE
- ⊕# FIRE ALARM CONTROL RELAY
- ⊕# CEILING MOUNTED SPEAKER
- ⊕# UNIVERSAL MOUNTED (CEILING/WALL) EXIT SIGN WITH CHEVRONS (SEE LIGHT FIXTURE SCHEDULE)
- ⊕# 2 x 4 SURFACE MOUNTED LIGHT FIXTURE (SEE LIGHT FIXTURE SCHEDULE)
- ⊕# 2 x 4 RECESSED MOUNTED LIGHT FIXTURE (SEE LIGHT FIXTURE SCHEDULE)
- ⊕# 2 x 2 RECESSED MOUNTED LIGHT FIXTURE (SEE LIGHT FIXTURE SCHEDULE)
- ⊕# NIGHT LIGHT FIXTURE (SEE LIGHT FIXTURE SCHEDULE)
- ⊕# LIGHT FIXTURE (SEE LIGHT FIXTURE SCHEDULE)
- ⊕# EMERGENCY LIGHT (SEE LIGHT FIXTURE SCHEDULE)
- ⊕# PANELBOARD
- ⊕# WAP WIRELESS ACCESS POINT
- ⊕# VOICE/DATA OUTLET WITH 3 JACKS CAT6
- ⊕# (4x4 DEEP BOX WITH MUG RING AND ONE (1) 3/4" C. STUB UP

ABBREVIATIONS

- WP WEATHER PROOF
- WG WIRE GUARD
- AC ABOVE THE COUNTER
- C CEILING MOUNTED DEVICE
- NL NIGHT LIGHT
- CLG CEILING
- (R) RETURN DUCTWORK
- (S) SUPPLY DUCTWORK
- OHD OVERHEAD DOOR
- ACC ABOVE ACCESSIBLE CEILING
- VEL VERIFY EXACT LOCATION PRIOR TO ROUGH-IN
- +42 DEVICE MOUNTED AT 42 INCHES AFF
- AFF ABOVE FINISH FLOOR
- TR TAMPER RESISTANT
- TG TAMPER GUARD
- EWG ELECTRICAL WATER COOLER
- WP/ IN USE METAL WHILE-IN-USE COVER WEATHER PROOF SIMILAR TO EATON WIUMH-1 SERIES
- E.C. ELECTRICAL CONTRACTOR
- M.C. MECHANICAL CONTRACTOR
- S.C. SECURITY CONTRACTOR
- AHJ AUTHORITY HAVING JURISDICTION
- HD ELECTRICAL HAND DRYER
- IWH INSTANTANEOUS ELECTRICAL WATER HEATER
- X EXISTING DEVICE TO REMAIN
- XRR EXISTING DEVICE TO BE REMOVED AND RELOCATED
- NR EXISTING DEVICE RELOCATED
- XR NEW DEVICE

ELECTRICAL DRAWING LIST

- E001 ELECTRICAL SYMBOL LIST, GENERAL NOTES AND DETAILS.
- E101 BASEMENT & 1ST FLOOR PLANS - ELECTRICAL
- E102 2ND FLOOR PLAN - ELECTRICAL
- E200 PARTIAL ELECTRICAL RISER DIAGRAM
- E300 BASEMENT LEVEL PANELS SCHEDULES
- E301 1ST FLOOR PANELS SCHEDULES
- E302 2ND FLOOR PANELS SCHEDULES.
- E400 ELECTRICAL SPECIFICATION SHEET.



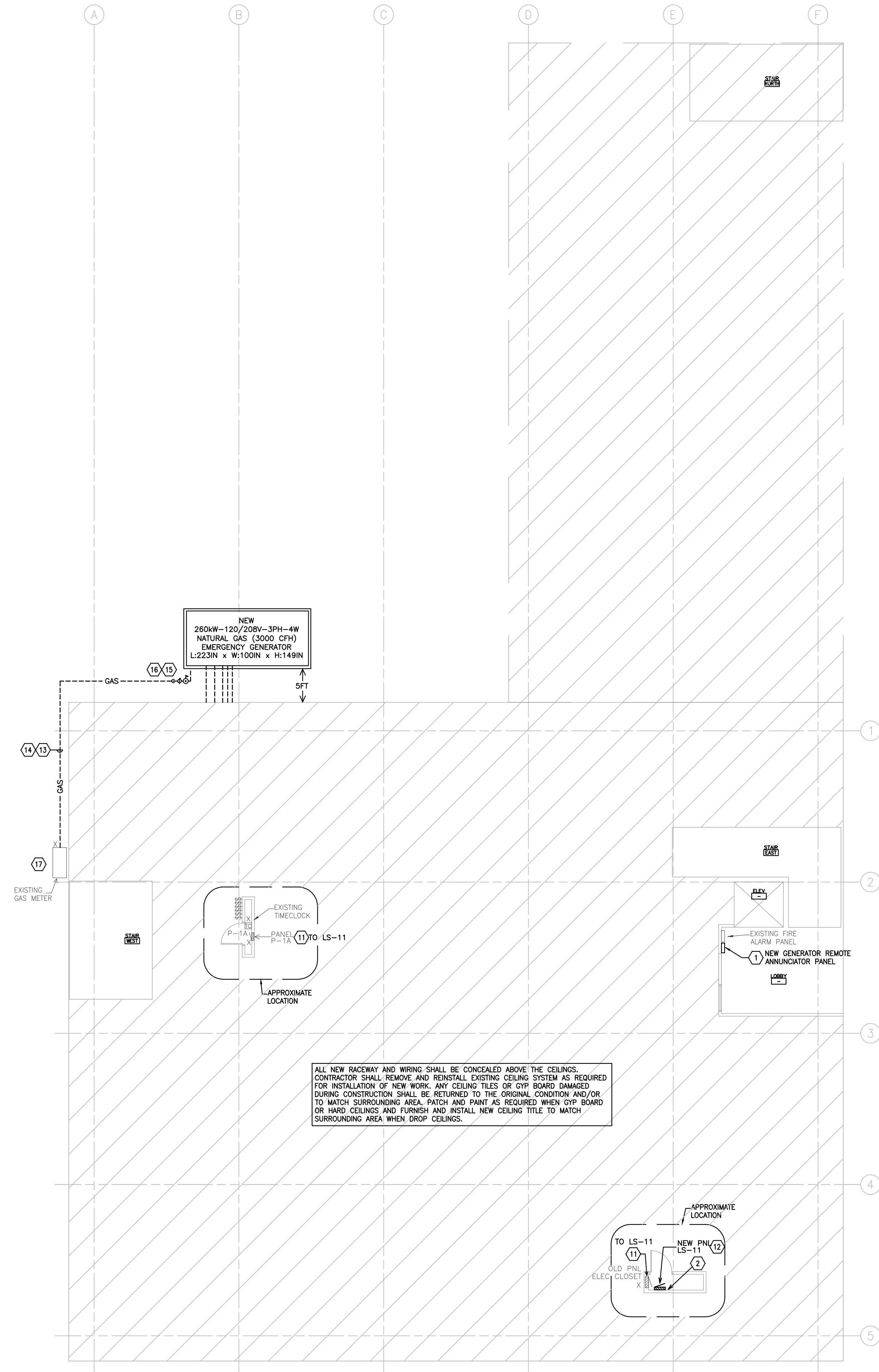
EMERGENCY GENERATOR
 77 S. BROADWAY
 AURORA, IL 60505

MGH ENGINEERING
MGH Consulting Engineers, LLC
 LICENSE NO. 184.007292-0002
 408 S. Highland Ave. Arlington Heights, IL 60005
 mhernandez@mgheengineering.com Phone: 773.314.2789

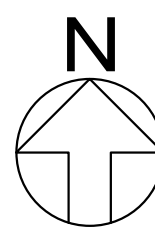
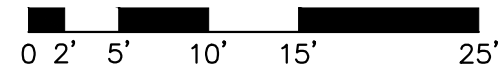
ELECTRICAL SYMBOL LIST GENERAL NOTES & DETAILS

ISSUED:
 9-23-21
 ISSUED FOR REVIEW

E001



2 PARTIAL 1ST FLOOR PLAN - ELECTRICAL
3/32" = 1'-0"

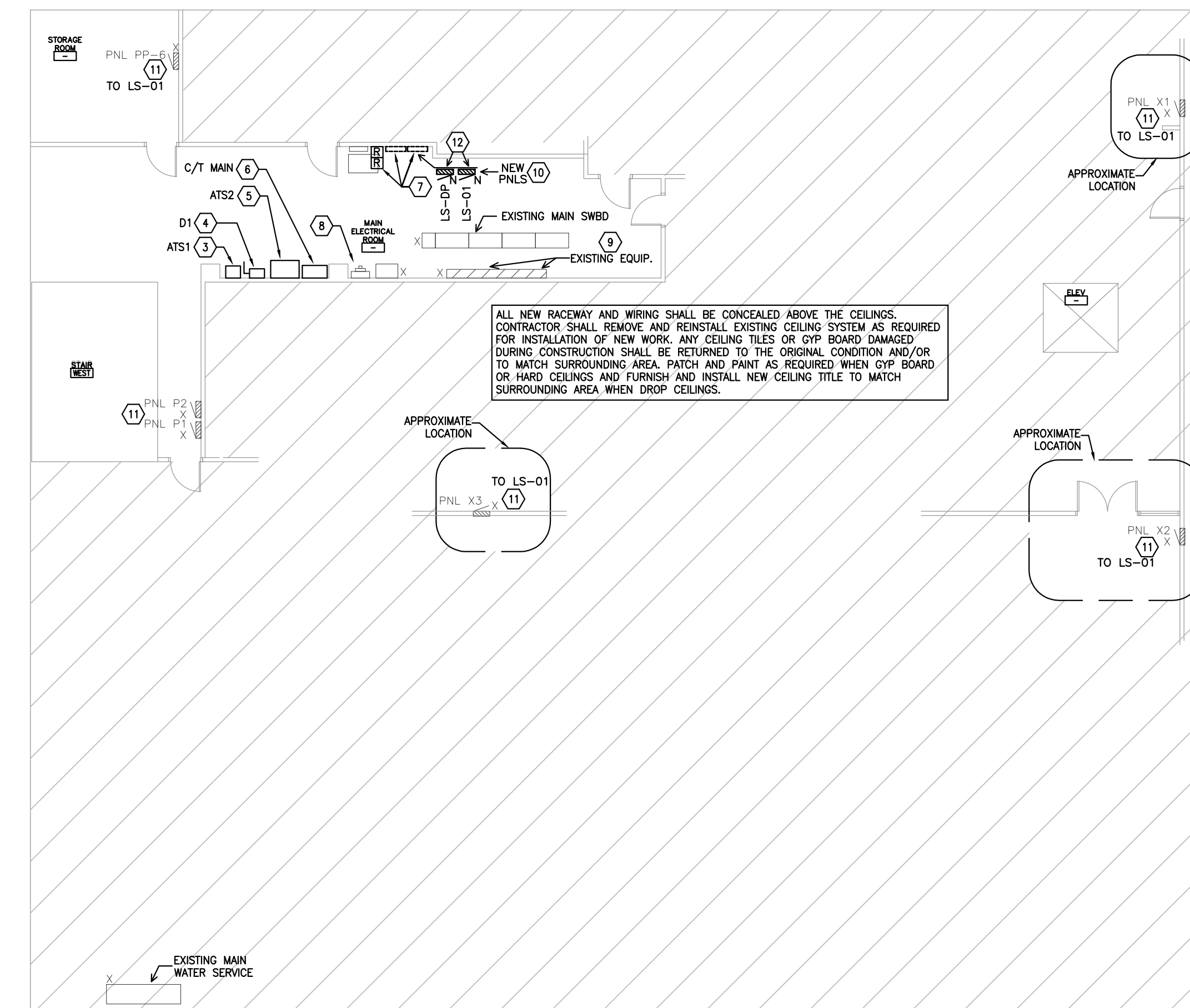


GENERAL NOTES

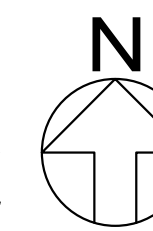
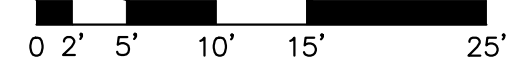
1. ALL WORK MUST COMPLY WITH NEC, NFPA, LIFE SAFETY & LOCAL APPLICABLE CODES.
2. PROVIDE ALL ADDITIONAL HARDWARE FOR MOUNTING AS REQUIRED FOR A COMPLETE INSTALLATION AND OPERATING SYSTEM.

KEY NOTES

- 1 PROVIDE NEW REMOTE GENERATOR STATUS PANEL.
- 2 EC SHALL DEMOLISH ABANDONED TELECOMMUNICATIONS CABINET AND PLACE NEW PANEL LS-11 IN SAME LOCATION.
- 3 NEW 200A-4P-120/208V-35KAIC LIFE SAFETY LOADS AUTOMATIC TRANSFER SWITCH (ATS1).
- 4 NEW 200A-3PH-208V FUSIBLE DISCONNECT SWITCH. FUSE AT 200A OR USE THERMO-MAGNETIC BREAKER BOX WITH 42KAIC BREAKER
- 5 NEW 800A-4P-120/208V-35KAIC NON LIFE SAFETY LOADS AUTOMATIC TRANSFER SWITCH (ATS2).
- 6 NEW 800A-3PH-208V-42KAIC C/T MAIN DISCONNECT SWITCH CABINET.
- 7 DEMOLISH EXISTING ABANDONED COMPRESSOR CONTROL CABINETS, RETAIN EXISTING RELAYS LOCATED INSIDE OF CABINETS AND LOCATED IN WALL NEAR EXISTING COMPRESSOR. PROVIDE NEW SMALL CABINET FOR INSTALLATION OF ACTIVE RELAYS. DEMO ALL EXISTING ABANDONED OR NOT ACTIVE EXISTING ELECTRICAL RACEWAY AND WIRING IN THE AREA - THE IDEA IS TO CLEAR SPACE FOR INSTALLATION OF NEW HARDWARE. TURN OFF ASSOCIATED SWITCHES IN SWITCH BOARD AND LABEL SPARE.
- 8 EXISTING UTILITY METER TO REMAIN.
- 9 DEMO EXISTING UTILITY METERS AND BYPASS CONNECTIONS ONLY IF EXISTING UTILITY METERS ARE ABANDONED OR NOT DOING ANYTHING. THE GOAL IS TO HAVE ONLY ONE METER IF POSSIBLE. COORDINATE WITH COMED FOR THIS WORK.
- 10 FURNISH AND INSTALL NEW PANELS AT THIS LOCATION AFTER REMOVAL OF EXISTING ABANDONED EQUIPMENT
- 11 ELECTRICAL CONTRACTOR SHALL PICK EXISTING LIFE SAFETY LOADS LOCATED IN THIS PANEL AND RELOCATE THEM TO NEW LIFE SAFETY PANEL SERVING THIS FLOOR AND AREA (LS-01 & LS-11). FURNISH AND INSTALL NEW RACEWAY, WIRING & J-BOXES AS REQUIRED FOR RELOCATION OF EXISTING CIRCUITS TO NEW PANEL. MATCH EXISTING SIZE AND TYPE OF WIRING AND RACEWAY CURRENTLY BEING USED. ALL BREAKERS NOT SERVING ANY LOADS SHALL BE TURN OFF AND LABEL "SPARE". PROVIDE NEW PANEL CARD DIRECTORY TO REFLECT UP-TO-DATE INSTALLATIONS AND ROOM NAMES AND NUMBERS. REFER TO SHEETS E300 BASEMENT PANEL SCHEDULES AND E301 1ST FLOOR PANEL SCHEDULES FOR ADDITIONAL INFORMATION. NEW BREAKERS SHALL CORRELATE WITH EXISTING CIRCUIT RATING. ALL NEW RACEWAY AND WIRING SHALL BE CONCEALED ABOVE CEILINGS. CONTRACTOR SHALL REMOVE AND REINSTALL EXISTING CEILING SYSTEM AS REQUIRED FOR INSTALLATION OF NEW WORK. ANY DAMAGE CEILING TILES OR GYP BOARD DAMAGE DURING CONSTRUCTION SHALL BE RETURNED TO THE ORIGINAL CONDITION AND TO MATCH SURROUNDING AREA. PATCH AND PAINT AS REQUIRED WHEN GYP BOARD OR HARD CEILING TYPE AND FURNISH AND INSTALL NEW CEILING TITLE TO MATCH EXISTING WHEN DROP CEILINGS.
- 12 FURNISH AND INSTALL NEW LIFE SAFETY PANEL. REFER TO SHEETS E200, E300 & E301 PANEL SCHEDULES FOR ADDITIONAL INFORMATION.
- 13 FURNISH AND INSTALL NEW UNDERGROUND NATURAL GAS LINE TO POWER THE NEW EMERGENCY GENERATOR. ADJUST ROUTING AS REQUIRED TO ACCOMMODATE INSTALLATION. CONTRACTOR SHALL TRENCH, AND RETURN SITE TO EXISTING CONDITIONS AROUND SURROUNDING AREA.
- 14 3" GAS @ 7" WC (VIF), 3000 CFH @ 50' E.L. (VIF)
- 15 VENTED REGULATOR, WHEN RUNNING MEDIUM PRESSURE GAS.
- 16 INSTALL WITH GAS COCK, 6" DIRT LEG AND UNION CONNECTION.
- 17 EXISTING GAS METER. COORDINATE WITH GAS COMPANY FOR UPGRADE IF NECESSARY.



1 PARTIAL BASEMENT PLAN - ELECTRICAL
3/32" = 1'-0"



EMERGENCY GENERATOR
77 S. BROADWAY
AURORA, IL 60505

MGH ENGINEERING
MGH Consulting Engineers, LLC
LICENSE NO. 184.007392.0002
409 S. Highland Ave. Arlington Heights, IL 60005
mhernandez@mghelectrical.com Phone: 773.314.2789

BASEMENT & 1ST FLOOR PLANS - ELECTRICAL

ISSUED:
9-23-21
ISSUED FOR REVIEW

E101



EMERGENCY GENERATOR
77 S. BROADWAY
AURORA, IL 60505

MGH
ENGINEERING
MGH Consulting Engineers, LLC
LICENSE NO. 184.007392.0002
409 S. Highland Ave. Arlington Heights, IL 60005
mhernandez@mgheengineering.com Phone: 773.314.1789

2ND FLOOR PLANS -
ELECTRICAL

ISSUED:
9-23-21
ISSUED FOR REVIEW

E102

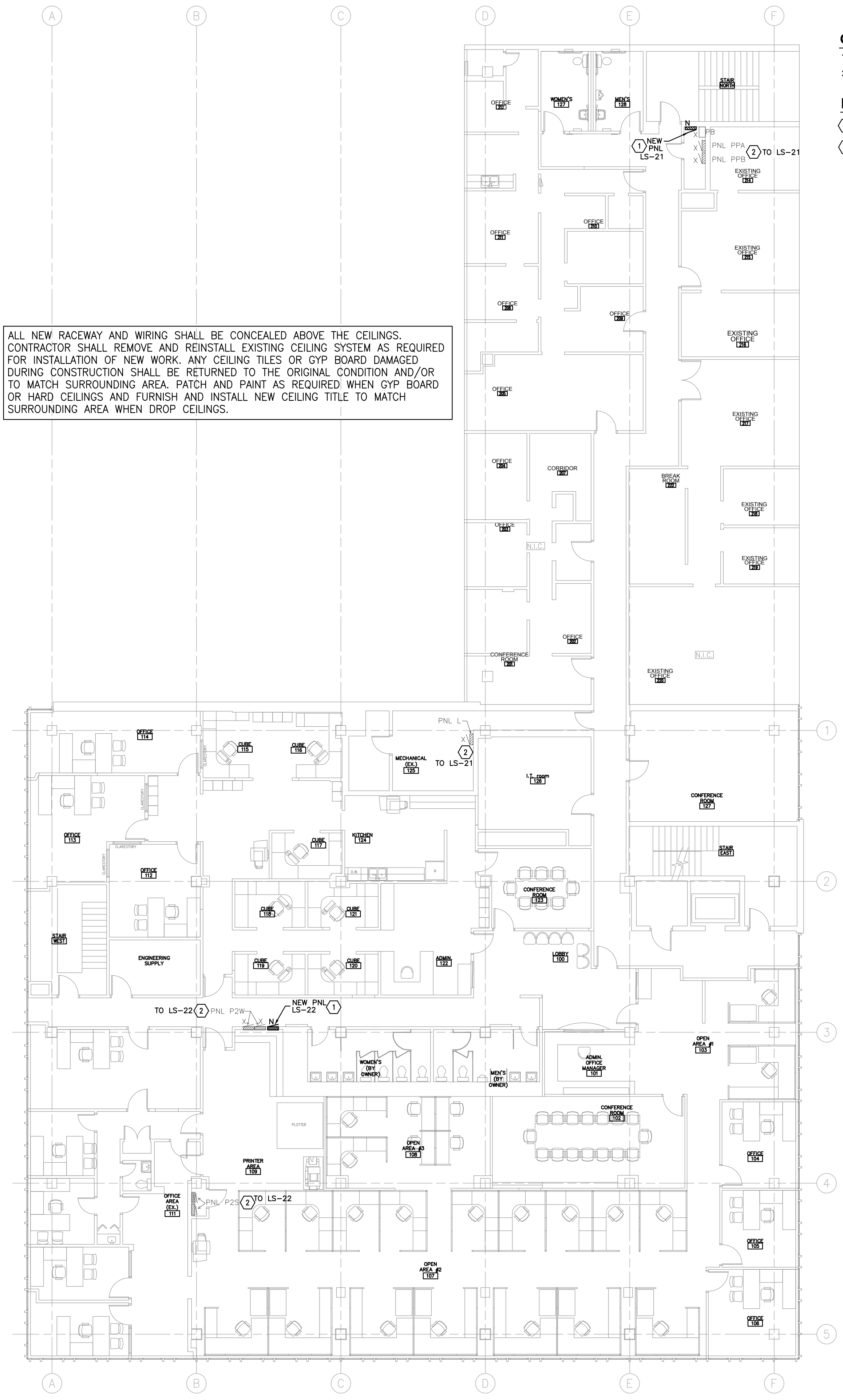
GENERAL NOTES

1. ALL WORK MUST COMPLY WITH NEC, NFPA, LIFE SAFETY & LOCAL APPLICABLE CODES.
2. PROVIDE ALL ADDITIONAL HARDWARE FOR MOUNTING AS REQUIRED FOR A COMPLETE INSTALLATION AND OPERATING SYSTEM.

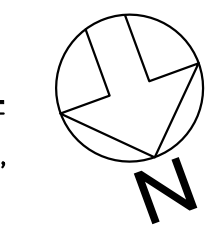
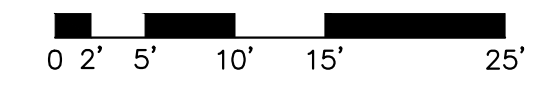
KEY NOTES

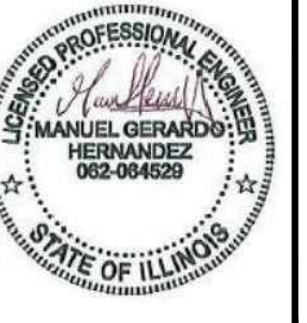
1. FURNISH AND INSTALL NEW LIFE SAFETY PANEL. REFER TO SHEETS E200 AND E302 BASEMENT PANEL SCHEDULES FOR ADDITIONAL INFORMATION.
2. ELECTRICAL CONTRACTOR SHALL PICK EXISTING LIFE SAFETY LOADS LOCATED IN THIS PANEL AND RELOCATE THEM TO NEW LIFE SAFETY PANEL SERVING THIS FLOOR AND AREA (LS-21 & LS-22). FURNISH AND INSTALL NEW RACEWAY, WIRING & J-BOXES AS REQUIRED FOR RELOCATION OF EXISTING CIRCUITS TO NEW PANEL. MATCH EXISTING SIZE AND TYPE OF WIRING AND RACEWAY CURRENTLY BEING USED. ALL BREAKERS NOT SERVING ANY LOADS SHALL BE TURN OFF AND LABEL "SPARE". PROVIDE NEW PANEL CARD DIRECTORY TO REFLECT UP-TO-DATE INSTALLATIONS AND ROOM NAMES AND NUMBERS. REFER TO SHEETS E302 2ND FLOOR PANEL SCHEDULES FOR ADDITIONAL INFORMATION. NEW BREAKERS SHALL CORRELATE WITH EXISTING CIRCUIT RATING. ALL NEW RACEWAY AND WIRING SHALL BE CONCEALED ABOVE CEILINGS. CONTRACTOR SHALL REMOVE AND REINSTALL EXISTING CEILING SYSTEM AS REQUIRED FOR INSTALLATION OF NEW WORK. ANY DAMAGE CEILING TILES OR GYP BOARD DAMAGE DURING CONSTRUCTION SHALL BE RETURNED TO THE ORIGINAL CONDITION AND TO MATCH SURROUNDING AREA. PATCH AND PAINT AS REQUIRED WHEN GYP BOARD OR HARD CEILINGS AND FURNISH AND INSTALL NEW CEILING TILE TO MATCH EXISTING WHEN DROP CEILINGS.

ALL NEW RACEWAY AND WIRING SHALL BE CONCEALED ABOVE THE CEILINGS. CONTRACTOR SHALL REMOVE AND REINSTALL EXISTING CEILING SYSTEM AS REQUIRED FOR INSTALLATION OF NEW WORK. ANY CEILING TILES OR GYP BOARD DAMAGED DURING CONSTRUCTION SHALL BE RETURNED TO THE ORIGINAL CONDITION AND/OR TO MATCH SURROUNDING AREA. PATCH AND PAINT AS REQUIRED WHEN GYP BOARD OR HARD CEILINGS AND FURNISH AND INSTALL NEW CEILING TITLE TO MATCH SURROUNDING AREA WHEN DROP CEILINGS.



2 2ND FLOOR PLAN - ELECTRICAL.
3/32" = 1'-0"





EMERGENCY GENERATOR
77 S. BROADWAY
AURORA, IL 60505

MGH Consulting Engineers, LLC
ENGINEERING
LICENSE NO. 184.007292.0002
400 S. Highland Ave. Arlington Heights, IL 60005
mhernandez@mghe.com Phone: 773.314.7819

ELECTRICAL RISER
DIAGRAM

ISSUED:
9-23-21
ISSUED FOR REVIEW

E200

KEY NOTES

- NEW LIFE SAFETY LOADS ATS1
200A-120/208V-3PHASE-4POLE AUTOMATIC TRANSFER SWITCH.
- NEW NON LIFE SAFETY LOADS ATS2
800A-120/208V-3PHASE-4POLE AUTOMATIC TRANSFER SWITCH.
- EXISTING ELECTRICAL SERVICE CABLES TO BE RE-ROUTED TO NEW 800A C/T WITH MAIN BREAKER CABINET. FURNISH AND INSTALL COMPRESSION CONNECTORS FOR EXTENSION OF EXISTING CABLES TO NEW C/T MAIN CABINET. FURNISH AND INSTALL NEW RACEWAY AND WIRING AS REQUIRED.
- FURNISH AND INSTALL NEW C/T CABINET WITH MAIN BREAKER RATED AT: 800A-120/208V-3PHASE-42KAIC
- INTERCEPT EXISTING METER/CT WIRING/RACEWAY AND CONNECT TO NEW 800A C/T CABINET. EXISTING CT'S TO BE DEMOLISHED. COORDINATE THIS WORK WITH COMED.
- REMOVE EXISTING 2000A MAIN ON-OFF SWITCH HANDLE. EXISTING 2000A FUSES CAN STAY.
- CONNECT NEW NON LIFE SAFETY ATS2 OUTPUT TO EXISTING SWITCHBOARD MAIN BUS.
- ALL EXISTING SWITCHES/BUCKETS NOT SERVING ANY LOADS SHALL BE TURNED OFF AND LABEL "SPARE". CONTRACTOR SHALL UPDATE EXISTING LABELING SYSTEM WITH NEW TO REFLECT EXISTING INSTALLATIONS. DELETE ALL CONFUSING INFORMATION FROM BOARD. DELETE CONFUSING INFORMATION FROM BOARD.
- DEMO EXISTING UTILITY METERS AND BYPASS CONNECTIONS ONLY IF EXISTING UTILITY METERS ARE ABANDONED OR NOT DOING ANYTHING. THE GOLD IS TO HAVE ONLY ONE METER IF POSSIBLE. COORDINATE WITH COMED FOR THIS WORK.
- DEMO EXISTING GROUNDING ELECTRODE SYSTEM. PREPARE FOR INSTALLATION OF NEW ONE IN NEW 800A MAIN SERVICE DISCONNECT.
- NEW 200A-3PH-208V FUSIBLE DISCONNECT SWITCH. FUSE AT 200A OR THERMO-MAGNETIC BREAKER BOX WITH 42KAIC BREAKER

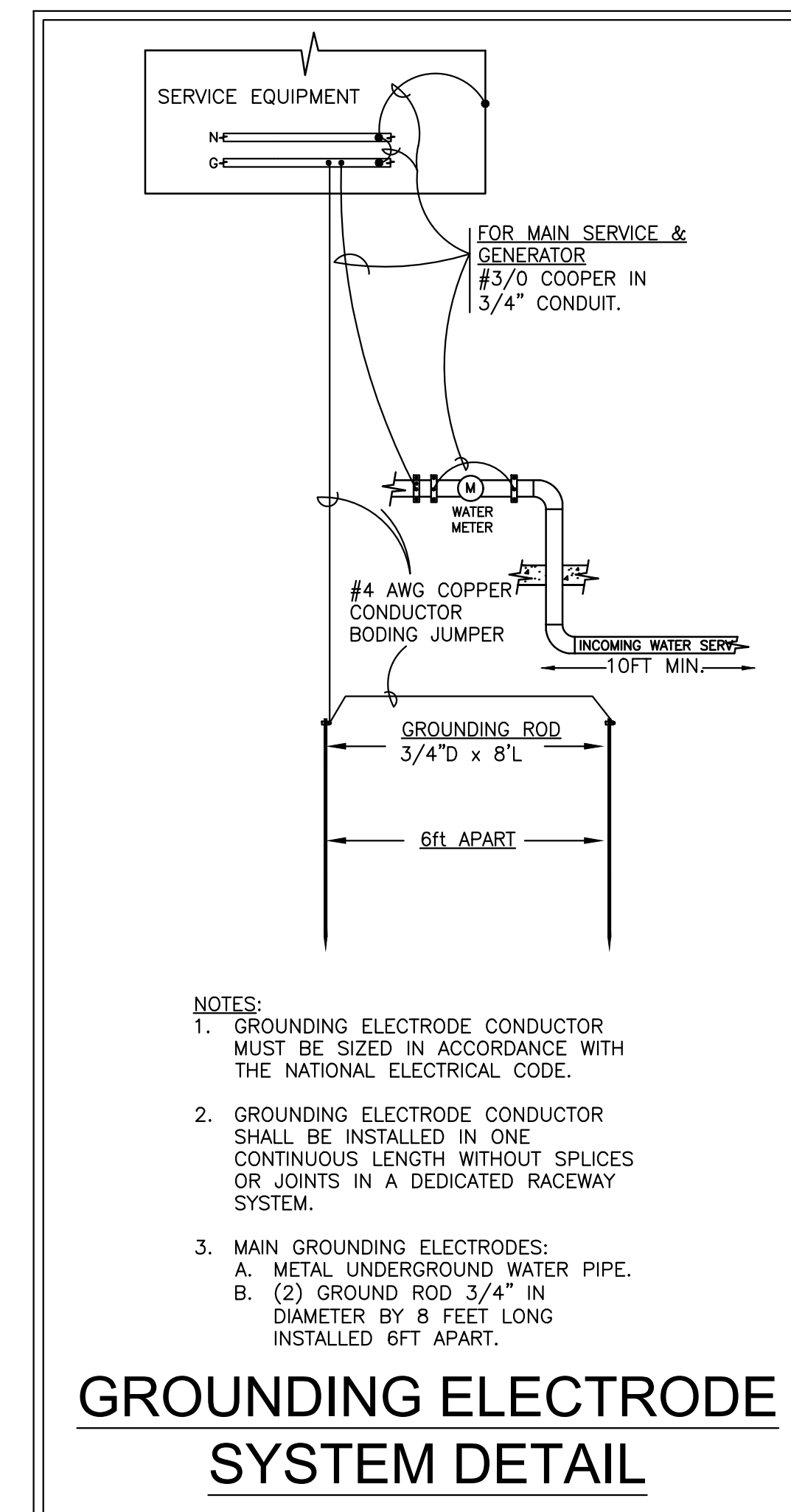
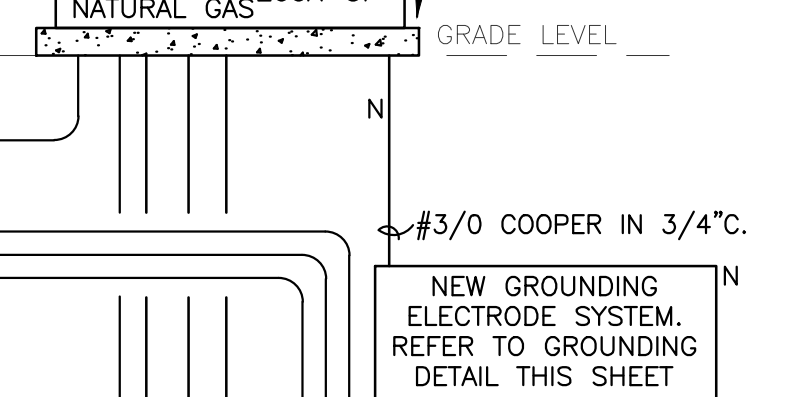
GEN SET NATURAL GAS:
IN A WEATHER PROOF SOUND LEVEL 3
ATTENUATING ENCLOSURE WITH MOTORIZED
GRAVITY LOUVERS.

GEN SET SHALL BE ABLE TO TURN-ON THE
EMERGENCY LIGHTS IN THE BUILDING WITHIN
10sec. AFTER NORMAL POWER LOSS.

PROVIDE LIFE SAFETY LISTED EQUIPMENT AS
MANUFACTURED BY:
• DETROIT DIESEL (INTERSTATE POWER SYSTEMS)
• Robert.Alfani@istate.com; Cell Ph: 708-642-5071
• GENERAC
• CUMMINS.
• KOHLER
• CAT
OR APPROVED EQUAL

CONCRETE
PAD BY E.C.
PER GEN SET
MANUFACTURER
REQUIREMENTS

EMER. STAND BY
GEN SET
260KW
120/208V
3PH, 4W
STAND-BY
NATURAL GAS
800A-3P
100% RATED
200A-3P



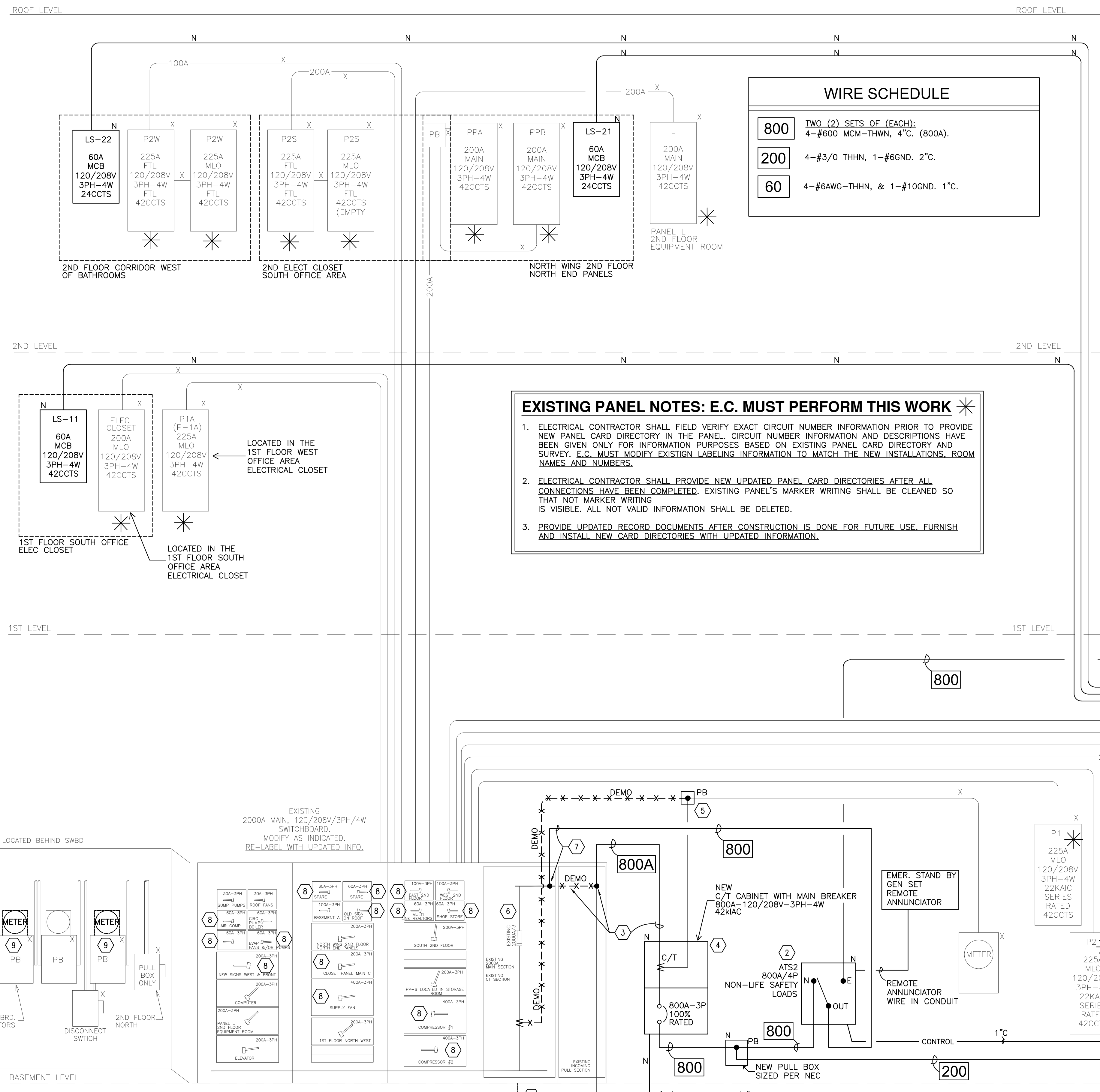
- NOTES:
- GROUNDING ELECTRODE CONDUCTOR MUST BE SIZED IN ACCORDANCE WITH THE NATIONAL ELECTRICAL CODE.
 - GROUNDING ELECTRODE CONDUCTOR SHALL BE INSTALLED IN ONE CONTINUOUS LENGTH WITHOUT SPLICES OR JOINTS IN A DEDICATED RACEWAY SYSTEM.
 - MAIN GROUNDING ELECTRODES:
A. METAL UNDERGROUND WATER PIPE.
B. (2) GROUND ROD 3/4" IN DIAMETER BY 8 FEET LONG INSTALLED 6FT APART.

WIRE SCHEDULE

800	TWO (2) SETS OF (EACH): 4-#600 MCM-THWN, 4°C. (800A).
200	4-#3/0 THHN, 1-#6GND. 2°C.
60	4-#6AWG-THHN, & 1-#10GND. 1°C.

EXISTING PANEL NOTES: E.C. MUST PERFORM THIS WORK

- ELECTRICAL CONTRACTOR SHALL FIELD VERIFY EXACT CIRCUIT NUMBER INFORMATION PRIOR TO PROVIDE NEW PANEL CARD DIRECTORY IN THE PANEL. CIRCUIT NUMBER INFORMATION AND DESCRIPTIONS HAVE BEEN GIVEN ONLY FOR INFORMATION PURPOSES BASED ON EXISTING PANEL CARD DIRECTORY AND SURVEY. E.C. MUST MODIFY EXISTING LABELING INFORMATION TO MATCH THE NEW INSTALLATIONS, ROOM NAMES AND NUMBERS.
- ELECTRICAL CONTRACTOR SHALL PROVIDE NEW UPDATED PANEL CARD DIRECTORIES AFTER ALL CONNECTIONS HAVE BEEN COMPLETED. EXISTING PANEL'S MARKER WRITING SHALL BE CLEANED SO THAT NOT MARKER WRITING IS VISIBLE. ALL NOT VALID INFORMATION SHALL BE DELETED.
- PROVIDE UPDATED RECORD DOCUMENTS AFTER CONSTRUCTION IS DONE FOR FUTURE USE. FURNISH AND INSTALL NEW CARD DIRECTORIES WITH UPDATED INFORMATION.



PARTIAL ELECTRICAL RISER DIAGRAM



EMERGENCY GENERATOR
77 S. BROADWAY
AURORA, IL 60505

MGH
ENGINEERING
MGH Consulting Engineers, LLC
LICENSE NO. 184.007392-0002
409 S. Highland Ave. Arlington Heights, IL 60005
mhernandez@mgheengineering.com Phone: 773.314.7819

1ST FLOOR
PANELS SCHEDULES

ISSUED:
9-23-21
ISSUED FOR REVIEW

E301

EXISTING P-1A

PANEL: P1A (P-1A)		FRAME SIZE: 225A		VOLTAGE: 120/208V					
LOCATION: 1ST FLOOR OFFICE - WEST ELEC CLOSET		M.L.O.: X		PHASE: 3φ					
FEEDER: SEE RISER FOR INFORMATION		A.I.C.: 10KAIC FULL RATED		WIRE: 4W					
CKT NO.	BR P FAULT C.B.	CIRCUIT DESCRIPTION	PHASE A	PHASE B	PHASE C	CIRCUIT DESCRIPTION	FAULT C.B.	BR P	CKT NO.
1	20 1	LOBBY LIGHT EM				ELEVATOR LIGHTS	1	20 1	2
3	20 1	LOBBY LIGHT				ELEVATOR SMOKE		20 1	4
5	20 1	COPY SOUTH				NORTHSIDE LIGHTS EM	1	20 1	6
7	20 1	COPY SOUTH				CONFERENCE RM LIGHTS	1	20 1	8
9	20 1	COUNTER BY SOUTH COPY				REFRIDGE		20 1	10
11	20 1	COUNTER BY SOUTH COPY				REFRIDGE		20 1	12
13	20 1	CONFERENCE ROOM				MICROWAVE		20 1	14
15	20 1	BATHROOM LIGHT1				MICROWAVE		20 1	16
17	20 1					DISHWASHER		20 1	18
19	20 1	IT ROOM LIGHTS				COUNTERTOP		20 1	20
21	20 1	SIGN & TIMECLOCK				LIGHTS LOBBY	1	20 1	22
23	20 1	LIGHT STAIR				LIGTS LOBBY	1	20 1	24
25	20 1					LIGHTS LOBBY	1	20 1	26
27	20 1	NORTH WALL				IT ROOM		20 1	28
29	20 1	NORTH WALL				IT ROOM		20 1	30
31	20 1	NORTH WALL				IT ROOM		20 1	32
33	20 1	NORTH WALL						20 1	34
35	20 1	NORTH WALL						20 1	36
37	20 1							20 1	38
39	20 1	BATHS				LOBBY COLUMB RECEP - COFFEE POT		20 1	40
41	- 1							- 1	42
TOTAL CONNECTED LOADS (VA)			###	###	###	###	###	GFI BREAKER	
TOTAL CONNECTED LOADS (VA)			####	####	####	####	####	-L.O. LOCK OUT	
TOTAL AMPERAGE									

EXISTING OLD PANEL IN CLOSET

PANEL: P1		FRAME SIZE: 200A		VOLTAGE: 120/208V					
LOCATION: 1ST FLR OFFICE AREA SOUTH ELEC CLOSET		M.L.O.: X		PHASE: 3φ					
FEEDER: SEE RISER FOR INFORMATION		A.I.C.: 10KAIC FULL RATED		WIRE: 4W					
CKT NO.	BR P FAULT C.B.	CIRCUIT DESCRIPTION	PHASE A	PHASE B	PHASE C	CIRCUIT DESCRIPTION	FAULT C.B.	BR P	CKT NO.
41	20 1	LITES(DIRST)				LITES (NEUS)	1	20 1	42
1	20 1	LITES(DIRST)				LITES OFFICE 1	1	20 1	21
2	20 1	LITES (NEUS)				LITES OFFICE 1	1	20 1	22
3	20 1	LITES SW				LITES OFFICE 2	1	20 1	23
4	20 1	EXIT + NITE LITES				LITES OFFICE 2	1	20 1	24
5	20 1	LITES LOBBY				LITES OFFICE 3	1	20 1	25
6	20 1	LITES LOBBY				LITES OFFICE 4	1	20 1	26
7	20 1					LITES OFFICE 5	1	20 1	27
8	20 1	BAD BREAKER				LITES OFFICE 6	1	20 1	28
9	20 1	LITES LOBBY				LITES OFFICE 7	1	20 1	29
10	20 1	ATM				RECEPTS		20 1	30
11	20 1	RECEPS FOR ATM				LITES OFFICE 2	1	20 1	31
12	20 1	NIGHT DEPOSITORY				LITES OFFICE 4	1	20 1	32
13	20 1	SOFFIT LIGHTS				LITES OFFICE 6	1	20 1	33
14	20 1	TIME CLOCK						20 1	34
15	20 1					BATHROOM 2ND FLOOR		20 1	35
16	20 1	LITES ENTRY						20 1	36
17	20 1	SPARE				COPY MACH		20 1	37
18	20 1	EAST STAIRS						20 1	38
19	20 1	SPARE				EXH FAN ON ROOF		20 1	39
20	20 1	SPARE				TIME CLOCK FEED FOR 2 ATM LIGHT & 2 BLDNG		20 1	40
TOTAL CONNECTED LOADS (VA)			###	###	###	###	###	GFI BREAKER	
TOTAL CONNECTED LOADS (VA)			####	####	####	####	####	-L.O. LOCK OUT	
TOTAL AMPERAGE									

NEW PANEL LIFE SAFETY LOADS - LS-11

PANEL: LS-11		FRAME SIZE: 100A		VOLTAGE: 120/208V					
LOCATION: 1ST FLR OFFICE AREA SOUTH ELEC CLOSET		M.L.O.: X		PHASE: 3φ					
FEEDER: SEE RISER FOR INFORMATION		A.I.C.: 10KAIC		WIRE: 4W					
CKT NO.	BR P FAULT C.B.	CIRCUIT DESCRIPTION	PHASE A	PHASE B	PHASE C	CIRCUIT DESCRIPTION	FAULT C.B.	BR P	CKT NO.
1	20 1	FROM PNL "P-1A" LOBBY LIGHT EM				FROM PNL "CLOSET" LITES (DIRST)		20 1	2
3	20 1	FROM PNL "P-1A" LOBBY LIGHT				FROM PNL "CLOSET" LITES SW		20 1	4
5	20 1	FROM PNL "P-1A" BATHROOM LIGHT				FROM PNL "CLOSET" LITES LOBBY		20 1	6
7	20 1	FROM PNL "P-1A" IT ROOM LIGHTS				FROM PNL "CLOSET" LITES		20 1	8
9	20 1	FROM PNL "P-1A" LIGHT STAIR				FROM PNL "CLOSET" LITES OFFICE 1		20 1	10
11	20 1	FROM PNL "P-1A" ELEVATOR LIGHTS				FROM PNL "CLOSET" LITES OFFICE 2		20 1	12
13	20 1	FROM PNL "P-1A" NORTHSIDE LIGHTS EM				FROM PNL "CLOSET" LITES OFFICE 3		20 1	14
15	20 1	FROM PNL "P-1A" CONFERENCE RM LIGHTS				FROM PNL "CLOSET" LITES OFFICE 4		20 1	16
17	20 1	FROM PNL "P-1A" LIGHTS LOBBY				FROM PNL "CLOSET" LITES OFFICE 5		20 1	18
19	20 1	FROM PNL "P-1A" LIGHTS LOBBY				FROM PNL "CLOSET" LITES OFFICE 6		20 1	20
21	20 1	FROM PNL "P-1A" LIGHTS LOBBY				FROM PNL "CLOSET" LITES OFFICE 7		20 1	22
23	20 1	FROM PNL "CLOSET" LITES STAIRS				FROM PNL "CLOSET" LITES (NEUS)		20 1	24
25	20 1	FROM PNL "CLOSET" SOFFIT LIGHTS				FROM PNL "CLOSET" EXIT + NITE LITES		20 1	26
27	20 1	SPARE				FROM PNL "CLOSET" LITES LOBBY		20 1	28
29	20 1	SPARE				FROM PNL "CLOSET" LITES ENTRY		20 1	30
31	20 1	SPARE				SPARE		20 1	20
33	20 1	SPARE				SPARE		20 1	22
35	1	SPACE				SPACE		1	24
37	1	SPACE				SPACE		1	26
39	1	SPACE				SPACE		1	40
41	1	SPACE				SPACE		1	42
TOTAL CONNECTED LOADS (VA)			###	###	###	###	###	GFI BREAKER	
TOTAL CONNECTED LOADS (VA)			####	####	####	####	####	-L.O. LOCK OUT	
TOTAL AMPERAGE									

KEY NOTES

- TRANSFER EXISTING LOAD FROM THIS PANEL TO NEW LIFE SAFETY PANEL "LS-11". PROVIDE ALL REQUIRED WIRING AND CONDUIT AS REQUIRED FOR RELOCATION OF EXISTING CIRCUITS. NEW RACEWAY AND WIRING SHALL MATCH EXISTING SIZE AND TYPE CURRENTLY BEING USED. TURN OFF EMPTY BREAKERS AFTER RELOCATION OF LOAD TO NEW LIFE SAFETY PANEL AND LABEL "SPARE"
- PROVIDE NEW PANEL CARD DIRECTORY WITH UPDATED INFORMATION. ALL EMPTY BREAKERS OR SERVING ABANDONED LOADS SHALL BE TURN OFF AND LABEL "SPARE"



EMERGENCY GENERATOR
77 S. BROADWAY
AURORA, IL 60505

MGH
ENGINEERING
MGH Consulting Engineers, LLC
LICENSE NO. 18-007392-0002
409 S. Highland Ave. Arlington Heights, IL 60005
mhernandez@mgheengineering.com Phone: 773.314.7819

2ND FLOOR
PANELS SCHEDULES

ISSUED:
9-23-21
ISSUED FOR REVIEW

E302

EXISTING PANEL - 2ND FL WEST

Table with columns: PANEL: P2W, LOCATION: 2ND FLOOR NORTH ELECTRICAL CLOSET, FEEDER: SEE RISER FOR INFORMATION, CIRCUIT DESCRIPTION, PHASE A, PHASE B, PHASE C, FAULT C.B., BR, P, CKT NO. Includes total connected loads and amperage.

EXISTING PANEL - 2ND FL WEST

Table with columns: PANEL: P2W, LOCATION: 2ND FLOOR NORTH ELECTRICAL CLOSET, FEEDER: SEE RISER FOR INFORMATION, CIRCUIT DESCRIPTION, PHASE A, PHASE B, PHASE C, FAULT C.B., BR, P, CKT NO. Includes total connected loads and amperage.

KEY NOTES

- 1 TRANSFER EXISTING LOAD FROM THIS PANEL TO NEW LIFE SAFETY PANEL "LS-21", PROVIDE ALL REQUIRED WIRING AND CONDUIT AS REQUIRED FOR RELOCATION OF EXISTING CIRCUITS. NEW RACEWAY AND WIRING SHALL MATCH EXISTING SIZE AND TYPE CURRENTLY BEING USED. TURN OFF EMPTY BREAKERS AFTER RELOCATION OF LOAD TO NEW LIFE SAFETY PANEL AND LABEL "SPARE"
2 TRANSFER EXISTING LOAD FROM THIS PANEL TO NEW LIFE SAFETY PANEL "LS-22", PROVIDE ALL REQUIRED WIRING AND CONDUIT AS REQUIRED FOR RELOCATION OF EXISTING CIRCUITS. NEW RACEWAY AND WIRING SHALL MATCH EXISTING SIZE AND TYPE CURRENTLY BEING USED. TURN OFF EMPTY BREAKERS AFTER RELOCATION OF LOAD TO NEW LIFE SAFETY PANEL AND LABEL "SPARE"
3 PROVIDE NEW PANEL CARD DIRECTORY WITH UPDATED INFORMATION. ALL EMPTY BREAKERS OR SERVING ABANDONED LOADS SHALL BE TURN OFF AND LABEL "SPARE"

NEW PANEL LIFE SAFETY LOADS - LS-21

Table with columns: PANEL: LS-21, LOCATION: SECOND FLOOR NORTH WING ELECTRICAL CLOSET, FEEDER: SEE RISER FOR INFORMATION, CIRCUIT DESCRIPTION, PHASE A, PHASE B, PHASE C, FAULT C.B., BR, P, CKT NO. Includes total connected loads and amperage.

NEW PANEL LIFE SAFETY LOADS - LS-22

Table with columns: PANEL: LS-22, LOCATION: SECOND FLOOR CORRIDOR WEST OF BATHROOMS, FEEDER: SEE RISER FOR INFORMATION, CIRCUIT DESCRIPTION, PHASE A, PHASE B, PHASE C, FAULT C.B., BR, P, CKT NO. Includes total connected loads and amperage.

EXISTING PANEL PPA-NORTH WING 2ND FLOOR

Table with columns: PANEL: PPA, LOCATION: 2ND FLOOR NORTH ELECTRICAL CLOSET, FEEDER: SEE RISER, CIRCUIT DESCRIPTION, PHASE A, PHASE B, PHASE C, FAULT C.B., BR, P, CKT NO. Includes total connected loads and amperage.

EXISTING PANEL PPA-NORTH WING 2ND FLOOR

Table with columns: PANEL: PPB, LOCATION: 2ND FLOOR NORTH ELECTRICAL CLOSET, FEEDER: SEE RISER, CIRCUIT DESCRIPTION, PHASE A, PHASE B, PHASE C, FAULT C.B., BR, P, CKT NO. Includes total connected loads and amperage.

EXISTING PANEL - 2ND FL SOUTH

Table with columns: PANEL: P2S, LOCATION: 2ND FLOOR SOUTH ELECTRICAL CLOSET, FEEDER: SEE RISER FOR INFORMATION, CIRCUIT DESCRIPTION, PHASE A, PHASE B, PHASE C, FAULT C.B., BR, P, CKT NO. Includes total connected loads and amperage.

EXISTING PANEL L

Table with columns: PANEL: L, LOCATION: MECHANICAL 125, FEEDER: SEE RISER FOR INFORMATION, CIRCUIT DESCRIPTION, PHASE A, PHASE B, PHASE C, FAULT C.B., BR, P, CKT NO. Includes total connected loads and amperage.

