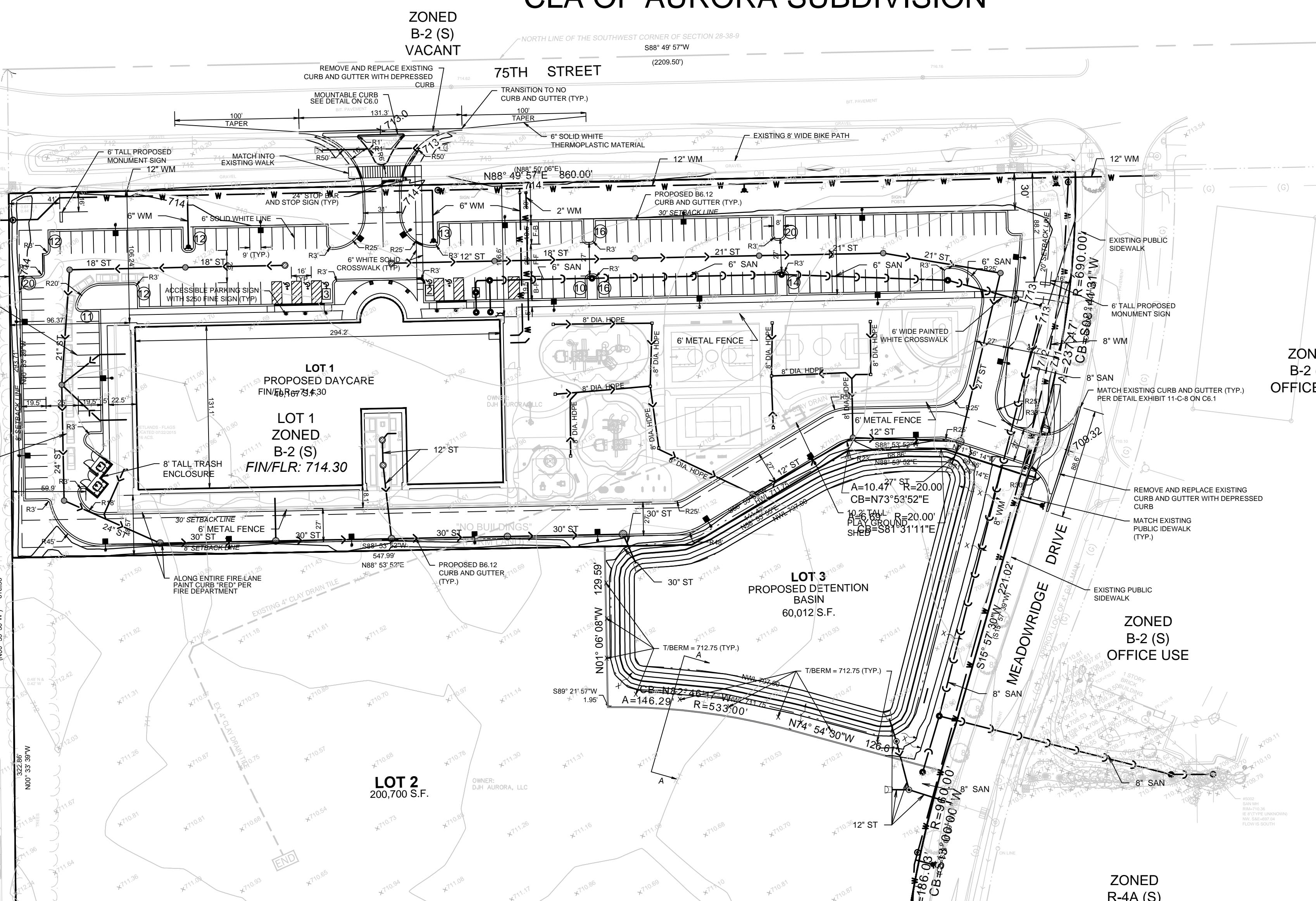


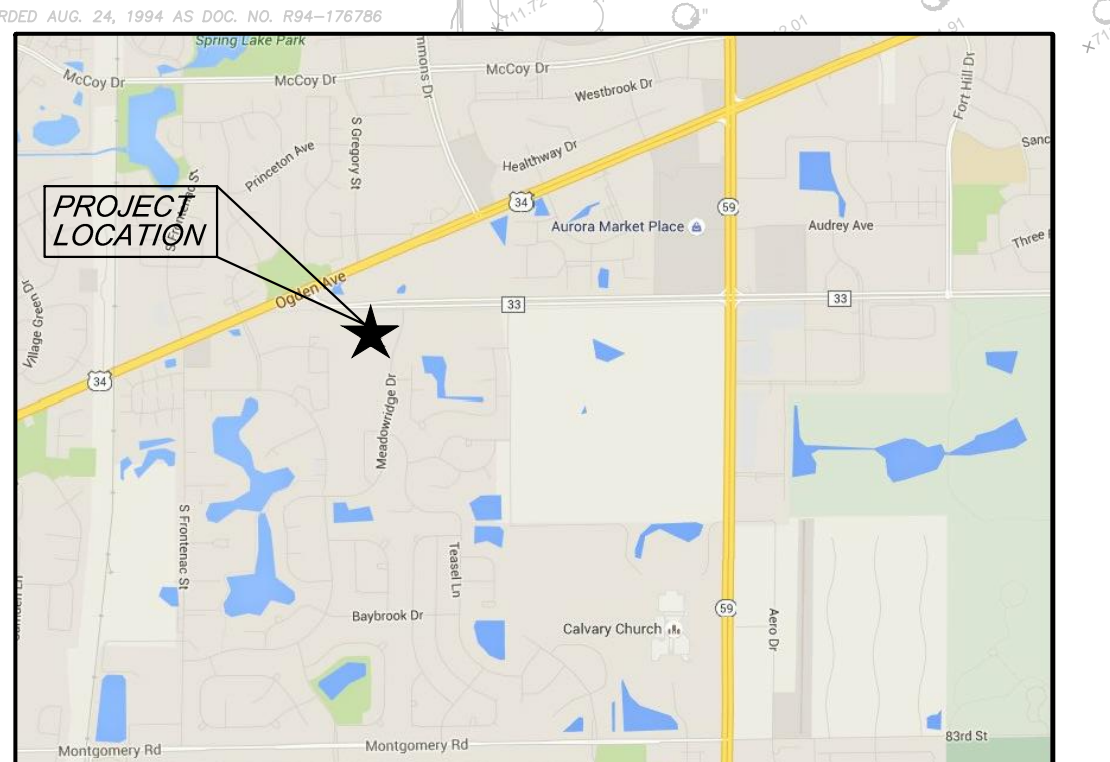
FINAL PLAN FOR CLA OF AURORA SUBDIVISION

Development Data Table: Final Plan					
Description	Value	Unit	Description	Value	Unit
a) Tax/Parcel Identification Number(s) (PINs): 07-28-300-028			j) Total Number of Residential Dwelling Units	0	units
			i. Gross Density	0.00	du/acre
			ii. Net Density	0.00	Net Density
b) Proposed land use(s): Childcare			k) Number of Single Family Dwelling Units	0	units
			i. Gross Density	0.00	du/acre
			ii. Net Density	0.00	Net Density
			iii. Unit Square Footage (average)	-	square feet
c) Total Property Size	6.73100092	Acres	iv. Bedroom Mix	0%	% 1 bdr
d) Total Lot Coverage (buildings and pavement)	293.202	Square Feet		0%	% 2 bdr
e) Open space / landscaping	179.032	Square Feet		0%	% 3 bdr
	61%	Percent		0%	% 4 bdr
f) Land to be dedicated to the School District	0	Acres	l) Number of Single Family Corner Lots	0	units
g) Land to be dedicated to the Park District	0	Acres	i. Gross Density	0.00	du/acre
h) Number of parking spaces provided (individually accessible)	161	spaces	ii. Net Density	0.00	Net Density
			iii. Unit Square Footage (average)	-	square feet
			iv. Bedroom Mix	0%	% 1 bdr
				0%	% 2 bdr
				0%	% 3 bdr
				0%	% 4 bdr
			m) Number of Multifamily Dwelling Units	0	units
			i. Gross Density	0.00	du/acre
			ii. Net Density	0.00	Net Density
			iii. Unit Square Footage (average)	-	square feet
			iv. Bedroom Mix	0%	% 1 bdr
				0%	% 2 bdr
				0%	% 3 bdr

Photometric Data Table			
Fixture #	Description	Value	Unit
	Total proposed external lumens	-	Lumens
	Total square footage of area to be illuminated.	-	Square Feet
1 (AA)	i) Type of Fixture (i.e. Pole, Wall Mounted) ii) manufacturer and model number(s) iii) Number of these Fixtures Shown iv) Lamp source type (bulb type, i.e. high pressure sodium, LED) v) Lumen output and wattage per Fixture vi) Mounting Height / Fixture Height	5 AMERICAN NAIL PLATE LTG #LA-4421-40W-LED-T5-5K	5 Fixtures Lumen/Wattage Square Feet
2 (YS)	i) Type of Fixture (i.e. Pole, Wall Mounted) ii) manufacturer and model number(s) iii) Number of these Fixtures Shown iv) Lamp source type (bulb type, i.e. high pressure sodium, LED) v) Lumen output and wattage per Fixture vi) Mounting Height / Fixture Height	8 COOPER #SQS-42-CF-FR	8 Fixtures Lumen/Wattage Square Feet
3 (S1)	i) Type of Fixture (i.e. Pole, Wall Mounted) ii) manufacturer and model number(s) iii) Number of these Fixtures Shown iv) Lamp source type (bulb type, i.e. high pressure sodium, LED) v) Lumen output and wattage per Fixture vi) Mounting Height / Fixture Height	1 COOPER #VTS-B04-LED-E1-RW	1 Fixtures Lumen/Wattage Square Feet
4 (S2)	i) Type of Fixture (i.e. Pole, Wall Mounted) ii) manufacturer and model number(s) iii) Number of these Fixtures Shown iv) Lamp source type (bulb type, i.e. high pressure sodium, LED) v) Lumen output and wattage per Fixture vi) Mounting Height / Fixture Height	8 COOPER #VTS-B06-LED-E1-SL3	8 Fixtures Lumen/Wattage Square Feet
5 (S3)	i) Type of Fixture (i.e. Pole, Wall Mounted) ii) manufacturer and model number(s) iii) Number of these Fixtures Shown iv) Lamp source type (bulb type, i.e. high pressure sodium, LED) v) Lumen output and wattage per Fixture vi) Mounting Height / Fixture Height	6 COOPER #VTS-B06-LED-E1-T3	6 Fixtures Lumen/Wattage Square Feet
6 (S4)	i) Type of Fixture (i.e. Pole, Wall Mounted) ii) manufacturer and model number(s) iii) Number of these Fixtures Shown iv) Lamp source type (bulb type, i.e. high pressure sodium, LED) v) Lumen output and wattage per Fixture vi) Mounting Height / Fixture Height	8 EATON #VTS-E01-LED-E1-SL4-HSS	8 Fixtures Lumen/Wattage Square Feet
7 (AB)	i) Type of Fixture (i.e. Pole, Wall Mounted) ii) manufacturer and model number(s) iii) Number of these Fixtures Shown iv) Lamp source type (bulb type, i.e. high pressure sodium, LED) v) Lumen output and wattage per Fixture vi) Mounting Height / Fixture Height	12 GE LIGHTING #EWS2-ATD140-120-277V	12 Fixtures Lumen/Wattage Square Feet



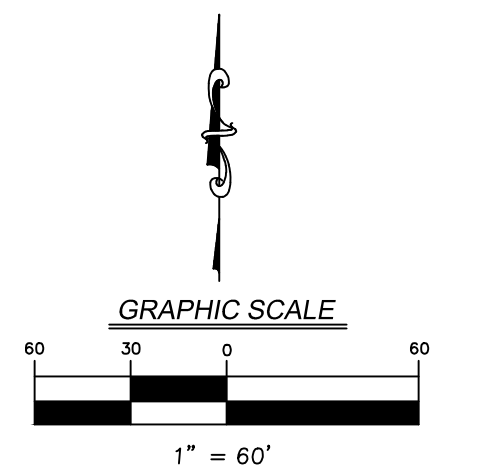
EXISTING	PROPOSED	DESCRIPTION
		SANITARY SEWER
		SANITARY FORCE MAIN
		STORM SEWER
		COMBINED SEWER
		WATER MAIN
		UNDERGROUND FIBER OPTIC
		UNDERGROUND ELECTRIC
		UNDERGROUND TELEPHONE
		OVERHEAD ELECTRIC
		OVERHEAD TELEPHONE
		OVERHEAD WIRE
		UTILITY STRUCTURE WITH CLOSED LID
		CURB INLET
		DRAINAGE STRUCTURE WITH OPEN LID
		FIRE HYDRANT
		VALVE IN VALVE BOX
		GATE VALVE IN VALVE VAULT
		FLARED END SECTION (F.E.S.)
		LIGHT STANDARD
		OVERHEAD UTILITY POLE



LOCATION MAP P.I.N. 07-28-300-028

PART OF THE SOUTHWEST QUARTER OF SECTION 28, TOWNSHIP 38 NORTH, RANGE 9 EAST OF THE THIRD PRINCIPAL MERIDIAN, IN DUPAGE COUNTY, ILLINOIS.

<p>DEVELOPER</p> <p>Children's Learning Adventure Childcare Centers 14631 N. Scottsdale Road, Suite 200 Scottsdale, Arizona 85254 602 200 9800 Contact: Michael Paddison</p>	<p>ENGINEER</p> <p>V3 Companies of Illinois, Ltd. 7325 Janes Avenue Woodridge, Illinois 60517 630 724 9200 Project Manager: Dwayne Gillian; P.E. Project Engineer: Matthew Brolley; P.E.</p>	<p>OWNER OF RECORD</p> <p>DJH Aurora, LLC. ONE OAKBROOK TERRACE, Suite 600 Oak Brook Terrace, Illinois 60181 630 932 1234 Contact: Dan Hiffman</p>
-----------------------------------------------------------------------------------------------------------------------------------------------------------------------------------------------------	-------------------------------------------------------------------------------------------------------------------------------------------------------------------------------------------------------------------------	-------------------------------------------------------------------------------------------------------------------------------------------------------------------------------



V3 Companies
7325 Janes Avenue
Woodridge, IL 60517
630.724.9200 phone
630.724.9202 fax
www.v3co.com

REVISIONS			
NO.	DATE	DESCRIPTION	
1	02-19-16	FINAL PLAN	
2	03-31-16	REVISED PER CITY/FMWRD COMMENTS	

15105 S04	MLB
FILE NAME:	DRAWN BY:
PRELIMINARY PLAN	NRS
ORIGINAL ISSUE DATE:	CHECKED BY:
02-12-16	DLG
SCALE:	PROJECT MANAGER:
1"=60'	DLG

PROJECT NO.: PROJECT NO.: DESIGNED BY:

CLA OF AURORA SUBDIVISION

ILLINOIS

FINAL PLAN

1/1

DRAWING NO.

15105 -PRELIMINARY PLAN