



FUSUS

Real-time Crime
Software “Common
Operating Picture”
Software

AURORA POLICE DEPARTMENT



Critical Incident Intelligence Center

In 2019, the Aurora Police Department began its Critical Incident Intelligence Center (Referred to as CIIC) to help be a hub of information for the department and to serve as a Real Time Crime Center. In 2021, the CIIC Office was re-constructed with a large video wall to allow for more effective workflow.

A Real Time Crime Center provides law enforcement agencies with the ability to capitalize on a wide and expanding range of technologies for efficient and effective policing. The technologies available allow officers to respond to crime events more efficiently, more deliberately, with improved operational intelligence, and with a proactive emphasis on officer, citizen, and community safety.

In 2021, We began looking at a “Common Operating Picture” which would pull in live data from multiple sources in one single view. City Council authorized \$59,900 for the 2022 budget year through 2026. As we further evaluated the product we had originally planned on purchasing, we learned of the potential for hidden expenses and that more capable products had been developed in the meantime.



MarketPlace City

It was the decided that we should use MarketPlace City to get a good sound holistic understanding of all of the products available and to make sure we had the best one to handle our needs.

- RFP was posted and distributed, resulting in 6 submissions for 4 distinct products

- A subset of 3 vendors were asked to demonstrate their solution

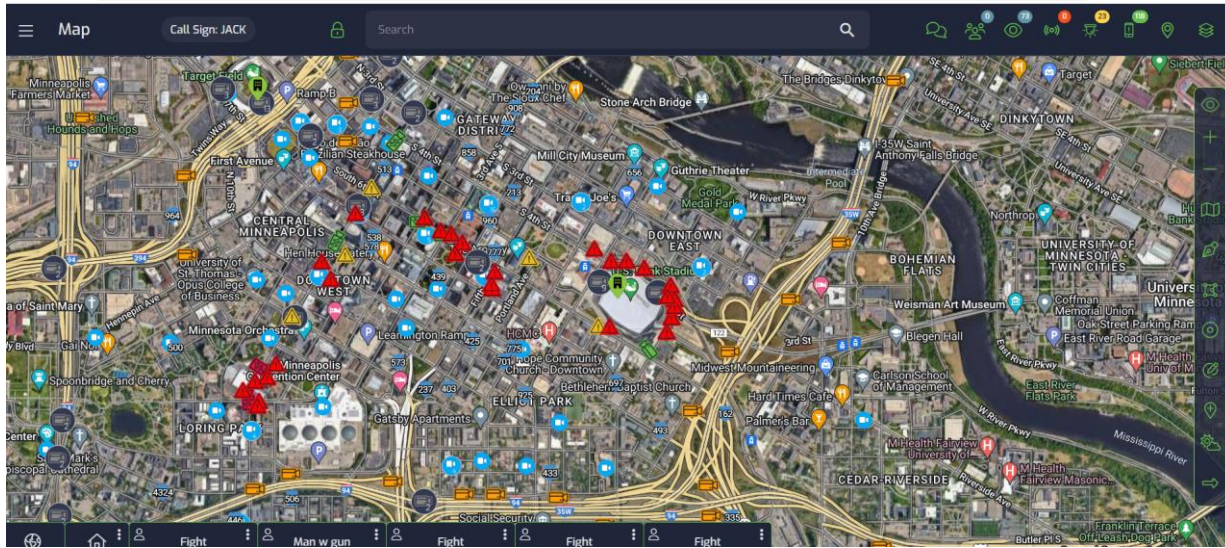
- 2 finalists were chosen, being Gentec Citigraf via Siemens and FUSUS.

FUSUS was ultimately selected through the process for the following reasons:

- Unified Data Streams- FUSUS' ability to unify video, data, Computer Aided Dispatch information and their partnership with Axon far surpassed the other vendors

- Pricing structure- FUSUS does not charge for third-party integrations and has been able to pre-build those integrations allowing for a flat-fee SaaS model with 1,500 data streams

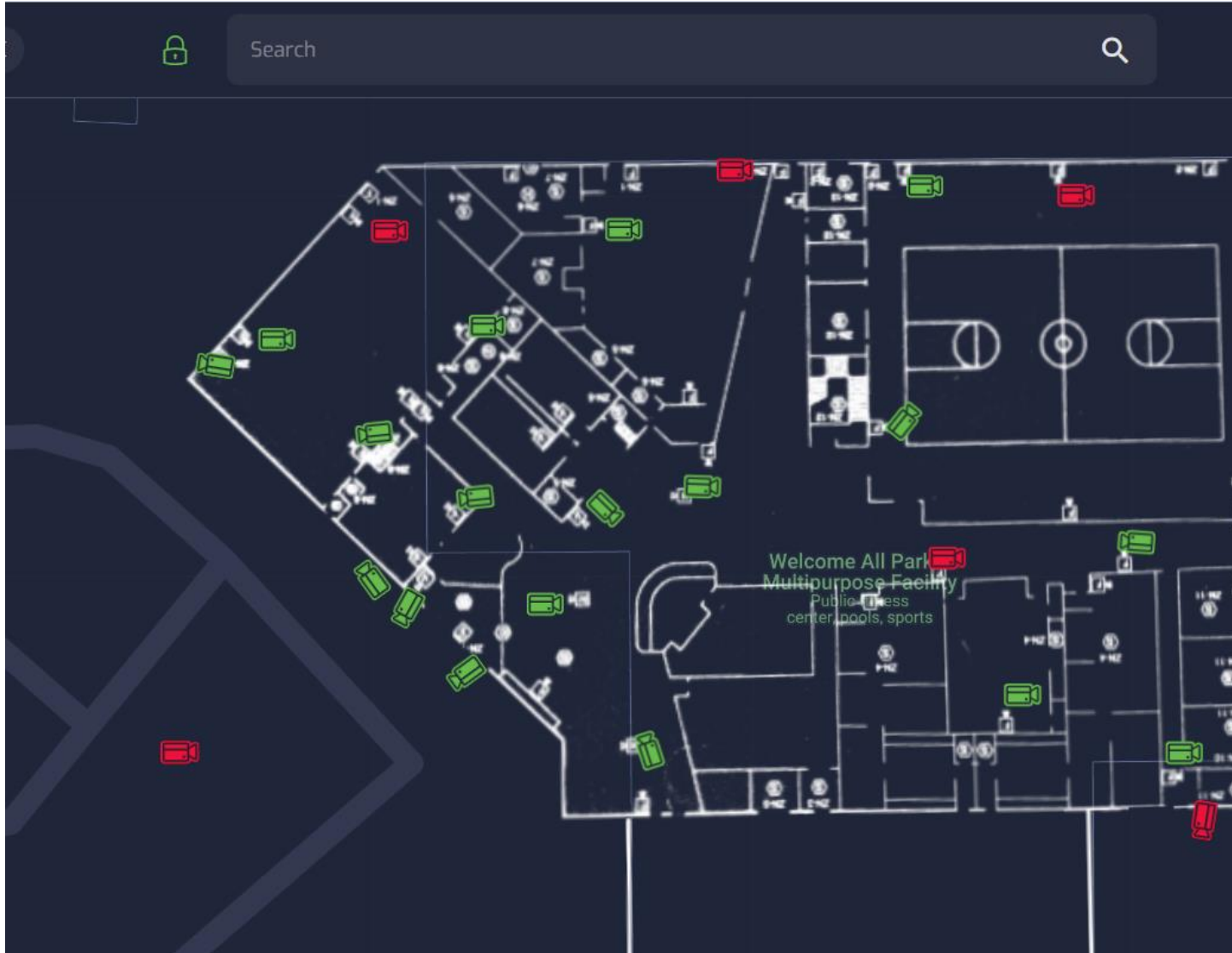
- User Interface- FUSUS has a streamlined user interface to allow for quick navigation and an app that will allow our officers to access this information from their City issued cellular phones



What we will be able to see

Officers, Supervisors and Dispatchers will be able to see and access all of the following data live in one view:

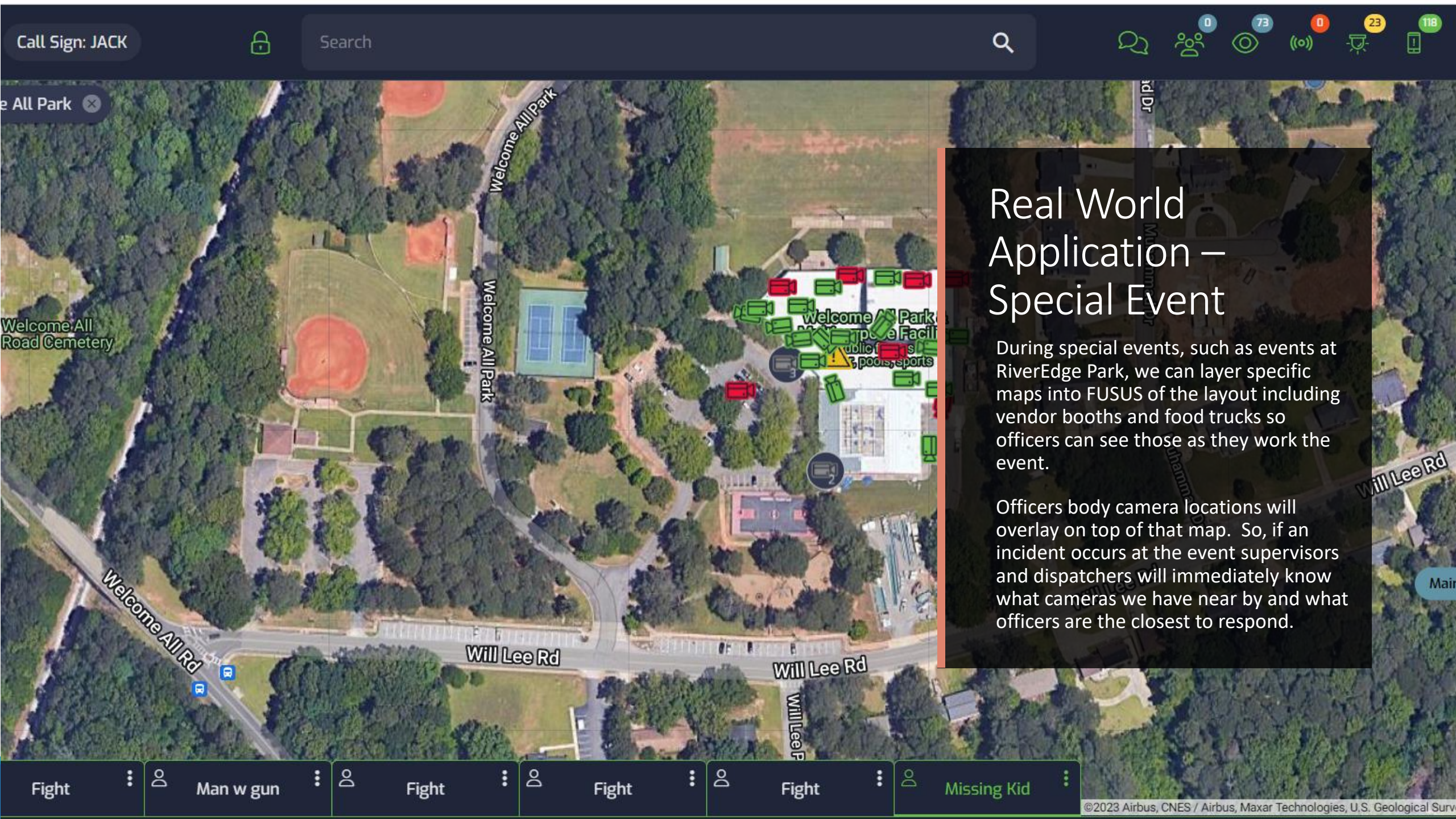
- CAD Dispatched calls will pop-up on the screen showing the location and data
- Officers body camera and squad locations will be displayed live and can be live streamed with the click of a button
- Stolen Vehicle Alerts will pop-up when a stolen car passes a license plate reader
- ShotSpotter Alerts will pop-up when they are received
- The City's Genetec cameras will overlay on the map so we can see what cameras near an incident may have captured an offender
- ArcGIS layers including District (beat lines), property addresses and lines, Sex Offender locations, and crime mapping of hotspots can be overlaid
- Cameras such as the Chicago Premium Outlet mall can be displayed on the map and live viewed so we can better direct personnel to emergencies there
- Floorplans of Schools and Critical Infrastructure can be overlaid and accessed



Real World Application – Active Shooter

For an active-shooter incident at a school we would be able to see the floor plan of the school with the cameras mapped out. Knowing exactly where the cameras are to better direct officers into the building. We can also easily replay the video to get a suspect description.

We would also be able to see officers body camera locations on the same screen and would be able to live stream those as well. Supervisors would be able to guide response based on the locations of personnel using the map



Call Sign: JACK



Search



0 73 0 23 118

Welcome All Park

Welcome All Road Cemetery

Welcome All Park

Welcome All Park

Welcome All Park Public Facility
pools, sports

Welcome All Rd

Will Lee Rd

Will Lee Rd

Will Lee Rd

Fight

Man w gun

Fight

Fight

Fight

Missing Kid

Real World Application – Special Event

During special events, such as events at RiverEdge Park, we can layer specific maps into FUSUS of the layout including vendor booths and food trucks so officers can see those as they work the event.

Officers body camera locations will overlay on top of that map. So, if an incident occurs at the event supervisors and dispatchers will immediately know what cameras we have near by and what officers are the closest to respond.

Cost

2023 (Remainder of the year – prorated from date of contract signing)	\$37,328 + \$4,000 for FUSUS Core
2024	\$125,000
2025	\$125,000
2026	\$125,000
2027	\$125,000
2028	\$125,000
Total	\$666,328.00 + 10% contingency

- Total maximum costs for 2023 - \$41,328, which will be funded using the funds previously allocated
- Cost for remaining years would increase by \$65,100 from the original budgeted amount of \$59,900 a year
- Future costs for 2024 and beyond have been included in the 2024 budget proposal