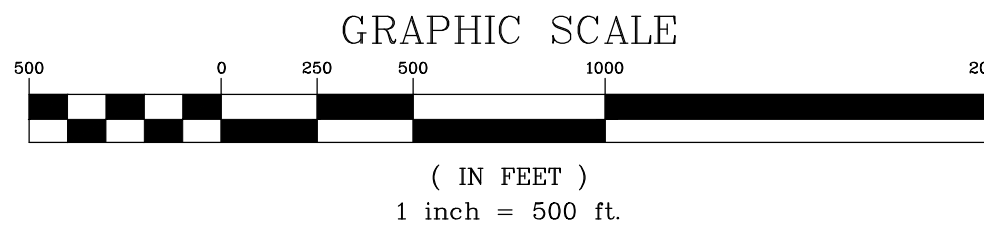


**LOCATION MAP**

NOT TO SCALE

# TOPOGRAPHIC SURVEY



**BASIS OF BEARINGS**

COORDINATES AND BEARINGS ARE BASED UPON THE ILLINOIS STATE PLANE COORDINATE SYSTEM, EAST ZONE (NAD 83), ADJUSTED TO GROUND VALUES, AS ESTABLISHED BY A REAL-TIME KINEMATIC (RTK) GLOBAL NAVIGATION SATELLITE SYSTEM (GNSS) UTILIZING THE TRIMBLE VRS NOW NETWORK.

**SURVEY PREPARED FOR**

PULTE HOME COMPANY, LLC  
1900 EAST GOLF ROAD, SUITE 300  
SCHAUMBURG, ILLINOIS 60173

**PROPERTY AREA**

23,260,545 SQUARE FEET (533.989 ACRES)

**PROPERTY ADDRESS**

VACANT LAND - SOUTHEAST OF U.S. 30 AND  
WOLF'S CROSSING ROAD, AURORA, ILLINOIS

**SURVEYOR'S NOTES**

- DISTANCES ARE MARKED IN FEET AND DECIMAL PLACES THEREOF. NO DIMENSION SHALL BE ASSUMED BY SCALE MEASUREMENT HEREON. DISTANCES AND/OR BEARINGS SHOWN IN PARENTHESIS (456.67') ARE RECORD OR DEED VALUES, NOT FIELD MEASURED.
- THE LOCATION OF THE PROPERTY LINES SHOWN ON THE FACE OF THIS PLAT ARE BASED ON AN ALTA/NSPS LAND TITLE SURVEY PERFORMED BY MANHARD CONSULTING DATED 09/04/2020.
- UNLESS OTHERWISE NOTED, ONLY THE IMPROVEMENTS WHICH WERE VISIBLE FROM ABOVE GROUND AT TIME OF SURVEY AND THROUGH A NORMAL SEARCH AND WALK THROUGH OF THE SITE ARE SHOWN ON THE FACE OF THIS PLAT. LAWN SPRINKLER SYSTEMS, IF ANY, ARE NOT SHOWN ON THIS SURVEY.
- MANHOLES, INLETS AND OTHER UTILITY RIMS OR GRATES SHOWN HEREON ARE FROM FIELD LOCATION OF SUCH, AND ONLY REPRESENT SUCH UTILITY IMPROVEMENTS WHICH ARE VISIBLE FROM ABOVE GROUND AT TIME OF SURVEY, THROUGH A NORMAL SEARCH AND WALK THROUGH OF THE SITE.
- UNDERGROUND UTILITIES INCLUDING, BUT NOT LIMITED TO, STORM AND SANITARY SEWERS, WATER MAINS, TELEPHONE AND ELECTRIC CABLES OR CONDUITS, GAS MAINS AND ALL SERVICE LINES SHOWN HEREON HAVE BEEN LOCATED BASED ON THE FOLLOWING: ACTUAL FIELD OBSERVATIONS AT AN OPEN MANHOLE; PROPOSED ENGINEERING PLANS; UTILITY ATLASES FROM PRIVATE UTILITY COMPANIES AND/OR LOCAL MUNICIPALITIES. THE SURVEYOR MAKES NO GUARANTEE THAT THE UNDERGROUND UTILITIES SHOWN COMPRISE ALL SUCH UTILITIES IN THAT AREA, EITHER IN SERVICE OR ABANDONED. THE SURVEYOR FURTHER DOES NOT WARRANT THAT THE UNDERGROUND UTILITIES SHOWN ARE IN THE EXACT LOCATION INDICATED ALTHOUGH HE DOES CERTIFY THAT THEY ARE LOCATED AS ACCURATELY AS POSSIBLE FROM INFORMATION AVAILABLE. THE SURVEYOR HAS NOT PHYSICALLY LOCATED THE UNDERGROUND UTILITIES.
- THIS SURVEY MAY NOT REFLECT ALL UTILITIES, OR IMPROVEMENTS, IF SUCH ITEMS ARE HIDDEN BY LANDSCAPING, OR ARE COVERED BY SUCH ITEMS AS DUMPSTERS OR TRAILERS, OR WHEN THE SITE WAS COVERED WITH SNOW. AT THE TIME OF SURVEY, THE SITE WAS NOT COVERED BY SNOW, OVERHEAD WIRES AND POLES (IF ANY) HAVE BEEN SHOWN, HOWEVER THEIR FUNCTION AND DIMENSIONS HAVE NOT BEEN SHOWN.
- OTHER THAN VISIBLE OBSERVATIONS NOTED HEREON, THIS SURVEY MAKES NO STATEMENT REGARDING THE ACTUAL PRESENCE OR ABSENCE OF ANY SERVICE OR UTILITY LINE. CONTROLLED UNDERGROUND EXPLORATORY EFFORT TOGETHER WITH "JULIE" MARKINGS IS RECOMMENDED TO DETERMINE THE FULL EXTENT OF UNDERGROUND SERVICE AND UTILITY LINES. CONTACT J.U.L.I.E. AT 1-800-892-0123.
- THE SURVEYED PROPERTY MAY HAVE A DRAINILE SYSTEM, WHICH HAS NOT BEEN SURVEYED OR SHOWN HEREON. IN ORDER TO DETERMINE IF A DRAINILE SYSTEM DOES EXIST ON THE SUBJECT PROPERTY, AND TO WHAT EXTENT, A DETAILED DRAINILE STUDY MUST BE COMPLETED BY THE APPROPRIATE PROFESSIONAL.

**CURRENT P.I.N.'S**

01-17-100-021  
01-17-100-023  
01-18-100-010  
01-18-200-001  
01-18-200-002  
01-18-200-003  
01-18-400-005  
01-18-400-006  
01-07-400-025  
01-07-400-026

**BENCHMARKS**

REFERENCE BENCHMARK: (NGS PID:DK3238)  
FOUND SURVEY DISK LOCATED APPROXIMATELY 30.6' WEST OF THE CENTERLINE OF FRONTENAC, 25.5' SOUTH OF THE CENTERLINE OF MONTGOMERY RD., AND 2.6' SOUTHEAST OF A GAS POST.

ELEVATION=712.15 DATUM=NAVD88-GEOD 12B

SITE BENCHMARK: 1  
SOUTHWEST FLANGE BOLT ON FIRE HYDRANT LOCATED APPROXIMATELY 300' SOUTHWEST OF THE INTERSECTION OF WOLF'S CROSSING RD. AND HOFFMAN BLVD. APPROXIMATELY 35' SOUTH OF THE CENTER LINE OF WOLF'S CROSSING RD.

ELEVATION=700.31 DATUM=NAVD88-GEOD 12B

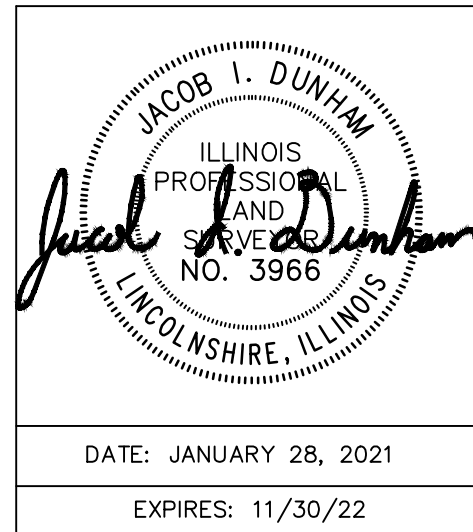
SITE BENCHMARK: 2  
SOUTHWEST FLANGE BOLT ON FIRE HYDRANT LOCATED APPROXIMATELY 500' NORTHEAST OF THE INTERSECTION OF WOLF'S CROSSING RD. AND EOLA RD. APPROXIMATELY 35' SOUTH OF THE CENTER LINE OF WOLF'S CROSSING RD.

ELEVATION=700.97 DATUM=NAVD88-GEOD 12B

TOPOGRAPHIC FIELD WORK COMPLETED ON 08/31/2020

**SHEET INDEX**

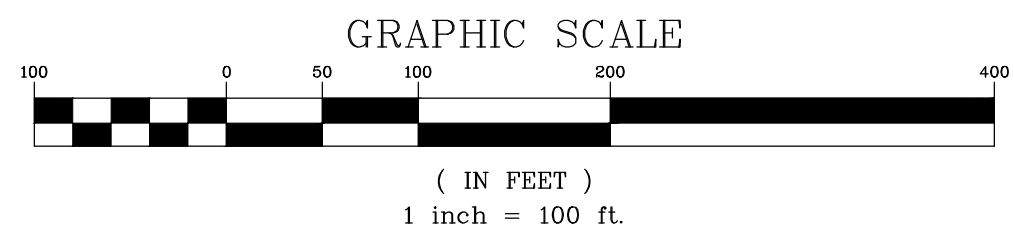
SHEET 1 OF 14:	OVERALL BOUNDARY
SHEET 2-7 OF 14:	IMPROVEMENTS @ 1"=100'
SHEET 8-14 OF 14:	IMPROVEMENTS DETAILS @ 1"=30'
SHEET 10 OF 14:	EOLA ROAD IMPROVEMENTS
SHEET 11 OF 14:	WEST 111TH STREET IMPROVEMENTS
SHEET 12-14 OF 14:	US HIGHWAY 30 IMPROVEMENTS



DATE: JANUARY 28, 2021  
EXPIRES: 11/30/22



# TOPOGRAPHIC SURVEY



## LEGEND

- EX. PROPERTY LINE
- EX. EASEMENT LINE
- EX. SECTION LINE
- EX. SIDEWALK
- EX. CONCRETE CURB & GUTTER
- EX. DEPRESSED CURB
- EX. CHAIN-LINK FENCE
- EX. WOOD FENCE
- EX. WIRE FENCE
- EX. OVERHEAD WIRES
- EX. TREE/BRUSH LINE
- EX. WETLANDS
- EX. WATER LINE
- EX. GUARD RAIL
- EX. DITCH/SWALE
- EX. MISCELLANEOUS MANHOLE (MH)
- EX. STORM MANHOLE (MH)
- EX. STORM CATCH BASIN (CB)
- EX. STORM INLET (NL)
- EX. FLARED END SECTION (FES)
- EX. RIP-RAP
- EX. DRAIN
- EX. DOWN SPOUT
- EX. STORM SERVICE POST
- EX. STORM CLEANOUT
- EX. SUMP CONNECTION
- EX. SANITARY MANHOLE (SMH)
- EX. SANITARY SERVICE POST
- EX. SANITARY CLEANOUT
- EX. SANITARY SEWER MARKER POST
- EX. FIRE HYDRANT/AUX. VALVE
- EX. VALVE BOX
- EX. VALVE VAULT (V.V.)
- EX. WATER METER
- EX. WATER SERVICE POST
- EX. BUFFALO BOX
- EX. WATER MARKER POST
- EX. GAS METER
- EX. JULIE GAS MARKER
- EX. GAS MARKER POST
- EX. ELECTRICAL METER
- EX. JULIE ELECTRIC MARKER
- EX. ELECTRIC MARKER POST
- EX. ELECTRIC TRANSFORMER
- EX. TRAFFIC SIGNAL CONTROL BOX
- EX. TRAFFIC SIGNAL
- EX. TRAFFIC SIGNAL WITH ARM
- EX. TELEPHONE PEDESTAL
- EX. FIBER OPTIC HANDHOLE
- EX. AIR CONDITIONING UNIT
- EX. UTILITY POLE
- EX. GUY WIRE
- EX. LIGHT STANDARD
- EX. SIGN
- EX. MAILBOX
- EX. BOLLARD
- EX. MONITORING WELL
- EX. BITUMINOUS PAVEMENT
- EX. CONCRETE
- EX. AGGREGATE

SEE SHEET 3

SEE SHEET 3

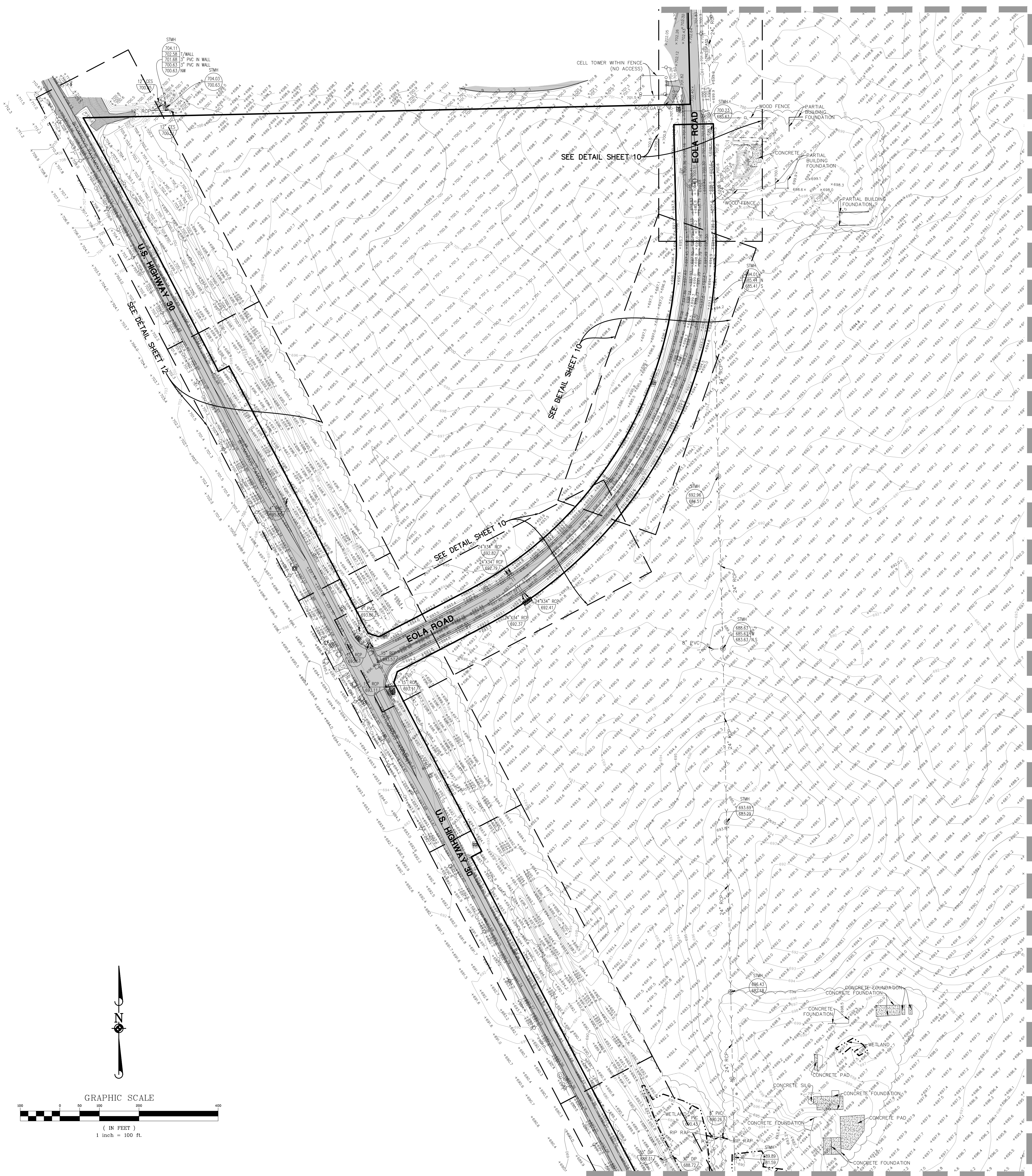
SEE SHEET 4

SEE SHEET 4



# TOPOGRAPHIC SURVEY

SEE SHEET 2



SEE SHEET 4

SEE SHEET 6

3 of 14 SHEET	PROJECT NAME: JLD	LINCOLN PRAIRIE AURORA PROPERTY
	DRAWN BY: PGA	AURORA, ILLINOIS
	CHECKED BY: PGA	TOPOGRAPHIC SURVEY
	DATE: 08/23/20	

**Manhard**  
CONSULTING LTD.  
One Overlook Point, Suite 200, Lincolnshire, IL 60069 ph847.634.5550 fx847.634.0095 manhard.com  
Civil Engineers • Surveyors • Water Resource Engineers • Water & Wastewater Engineers  
Construction Managers • Environmental Scientists • Landscape Architects • Planners

DATE	REVISIONS	DRAWN BY
07/28/21	ADDED ADDITIONAL TOPO ALONG HIGHWAY 30	PGA



# TOPOGRAPHIC SURVEY



SEE SHEET 2

SEE SHEET 3

SEE SHEET 5

SEE SHEET 6

SEE SHEET 7

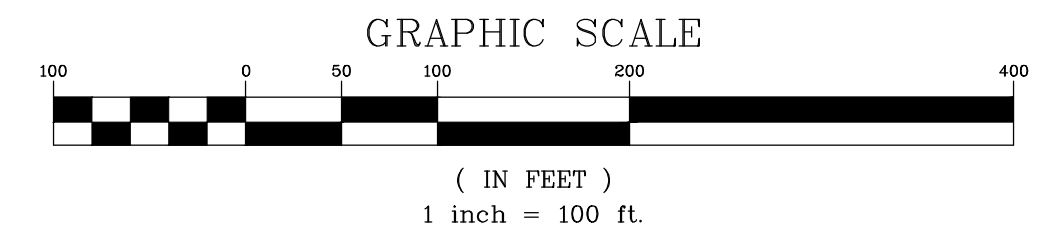
4 of 14 SHEET	PROJECT NO. JLD	LINCOLN PRAIRIE AURORA PROPERTY
	DATE 08/23/20	AURORA, ILLINOIS
	SCALE 1"=100'	TOPOGRAPHIC SURVEY
	DESIGNED BY PGA	



DATE	REVISIONS	DRAWN BY
01/28/21	ADDED ADDITIONAL TOPO ALONG HIGHWAY 30	PGA



# TOPOGRAPHIC SURVEY



SEE SHEET 2

SEE SHEET 4

SEE SHEET 7

PULAU01

5 OF 14

SHEET

PROJ. NO. 20

DATE 09/21/20

SCALE 1"=100'

LINCOLN PRAIRIE AURORA PROPERTY

AURORA, ILLINOIS

TOPOGRAPHIC SURVEY

**Manhard**  
CONSULTING LTD

One Overlook Point, Suite 200, Lincolnshire, IL 60069 ph: 647.634.5500 f: 647.634.0090 manhard.com  
Civil Engineers • Surveyors • Water Resource Engineers • Water & Wastewater Engineers  
Construction Managers • Environmental Scientists • Landscape Architects • Planners

DATE	REVISIONS	DRAWN BY
01/28/21	ADDED ADDITIONAL TOPO ALONG HIGHWAY 30	PGA



**SEE SHEET 4**



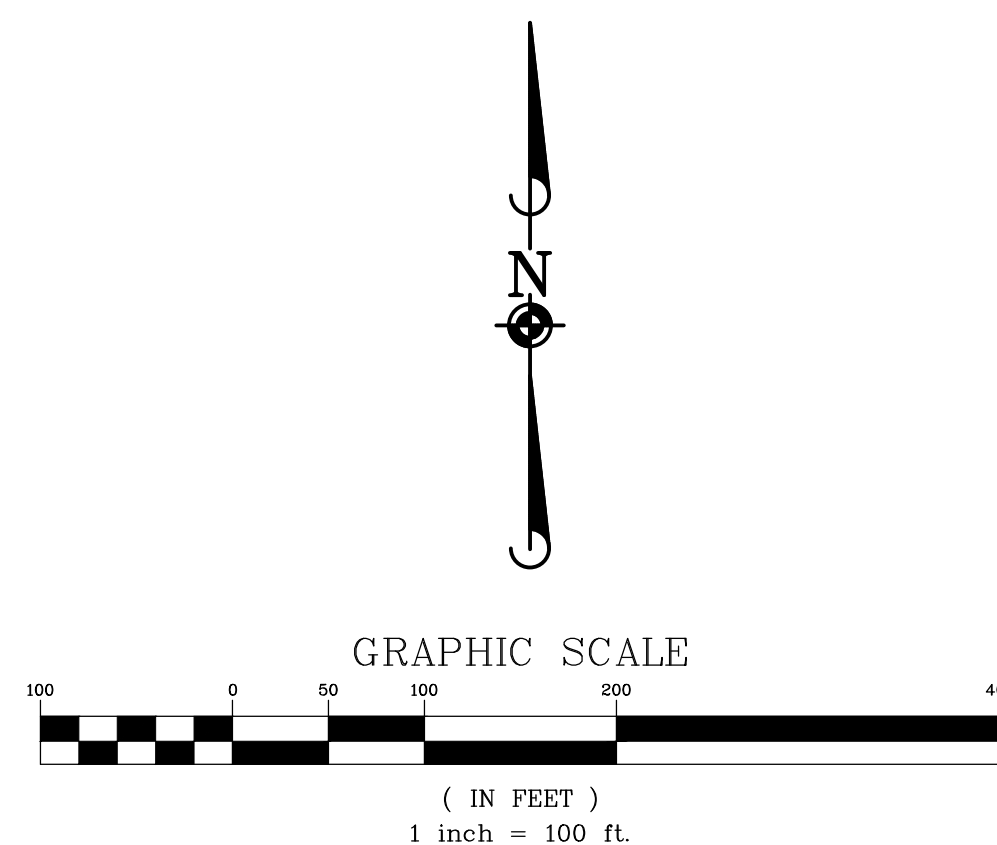
SEE DETAIL SHEET 11-



# TOPOGRAPHIC SURVEY

SEE SHEET 4

SEE SHEET 5



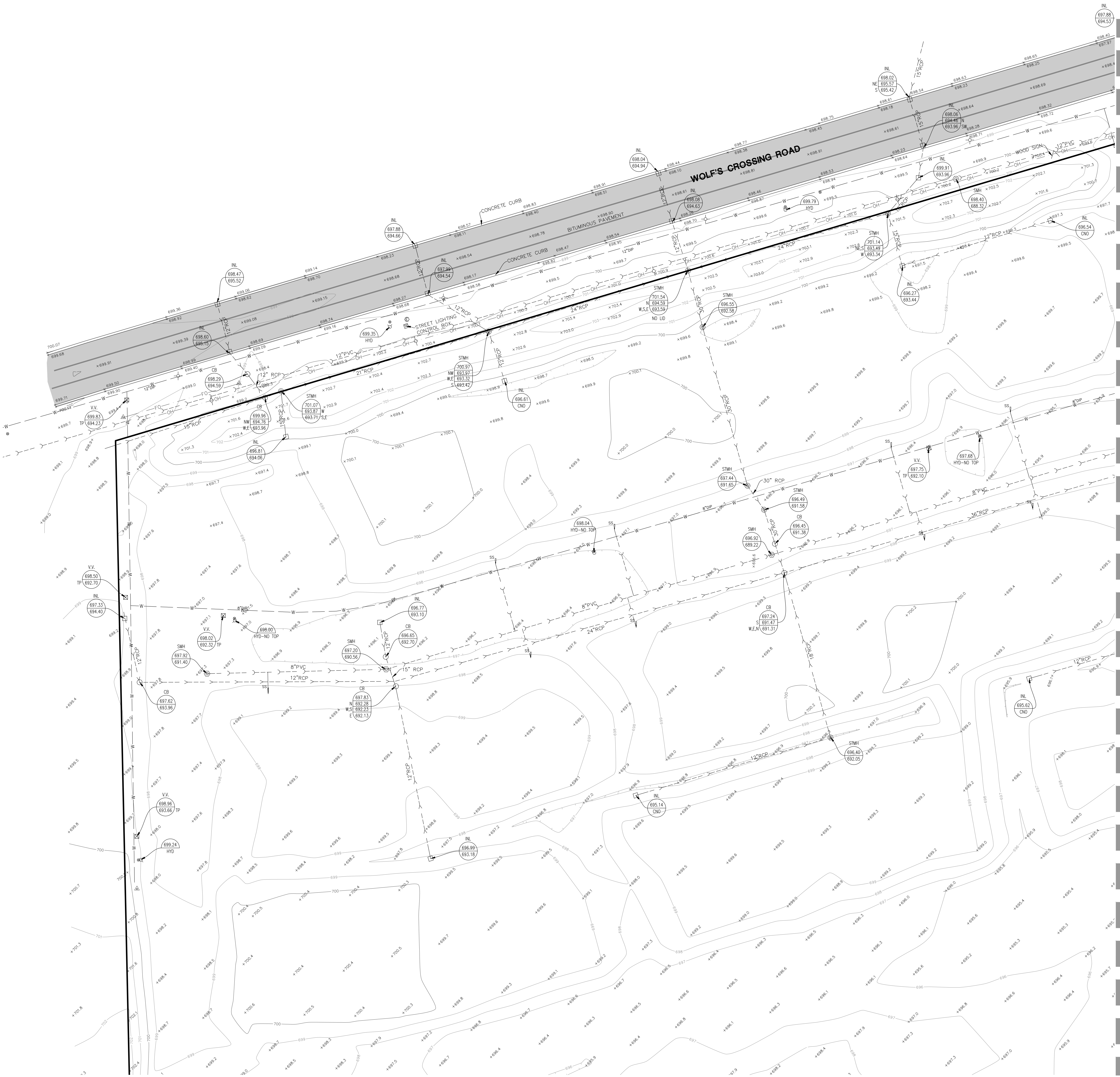
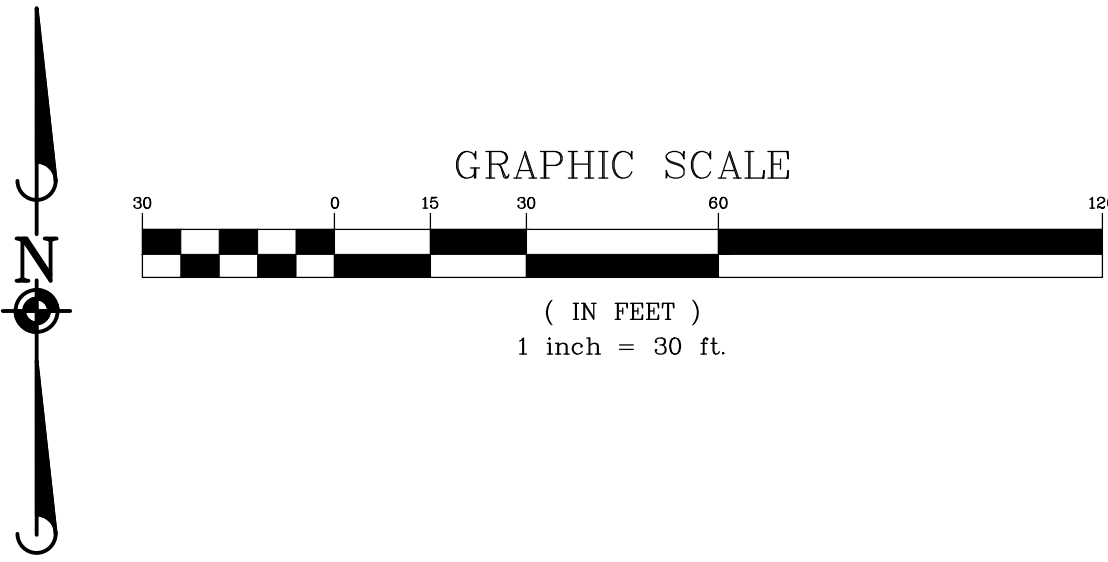
SEE SHEET 6



SEE DETAIL SHEET 11



# TOPOGRAPHIC SURVEY



SEE SHEET 9

PULJUL01	8 of 14	SHEET	LINCOLN PRAIRIE AURORA PROPERTY	
			AURORA, ILLINOIS	
			TOPOGRAPHIC SURVEY	
DATE	08/23/20	SCALE	1"=30'	
DESIGNED BY	PGA	CHECKED BY	JTD	
DRAWN BY	PGA	DATE	08/23/20	

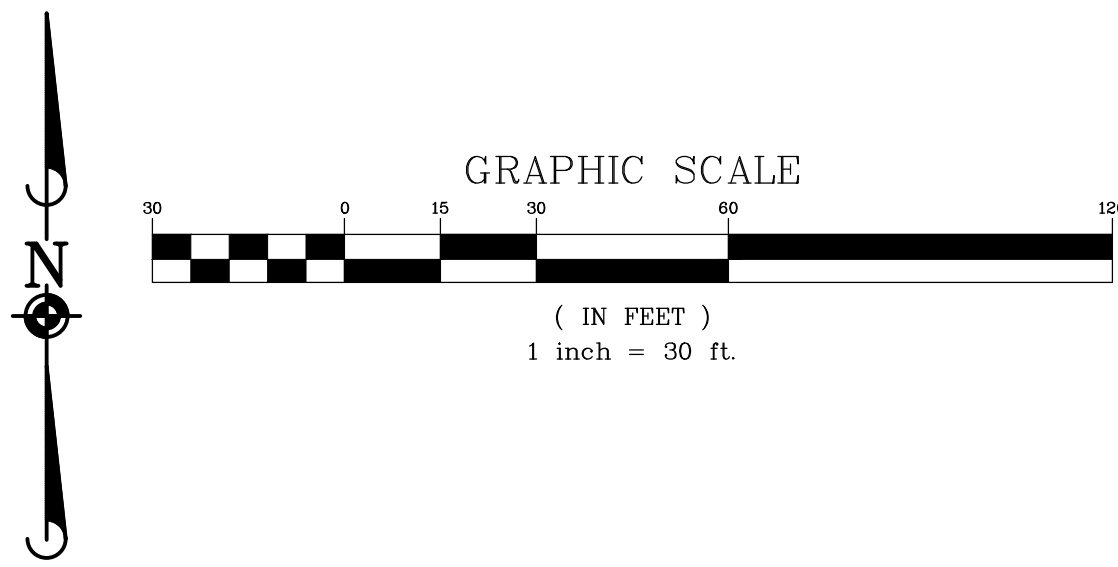
**Manhard**  
CONSULTING LTD

One Overlook Point, Suite 200, Lincolnshire, IL 60069 ph847.834.5550 fx847.834.0095 manhard.com  
Civil Engineers • Surveyors • Water Resource Engineers • Water & Wastewater Engineers  
Construction Managers • Environmental Scientists • Landscape Architects • Planners

DATE	REVISIONS	DRAWN BY
01/28/21	ADDED ADDITIONAL TOPO ALONG HIGHWAY 30	PGA



# TOPOGRAPHIC SURVEY



SEE SHEET 8

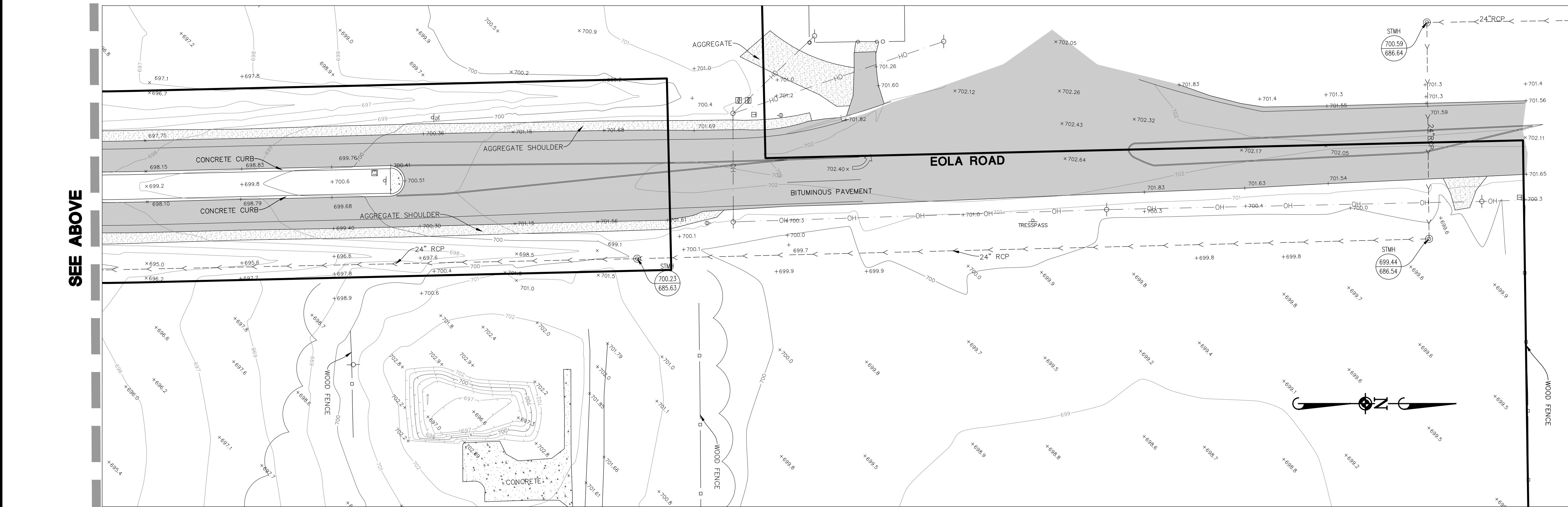
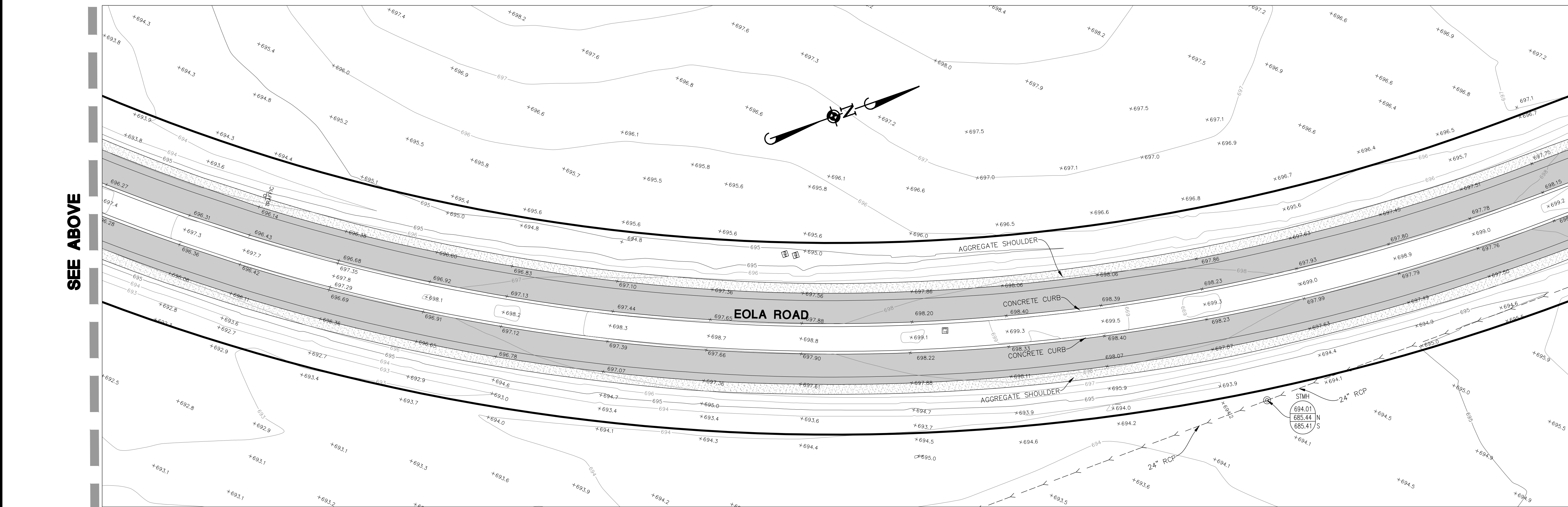
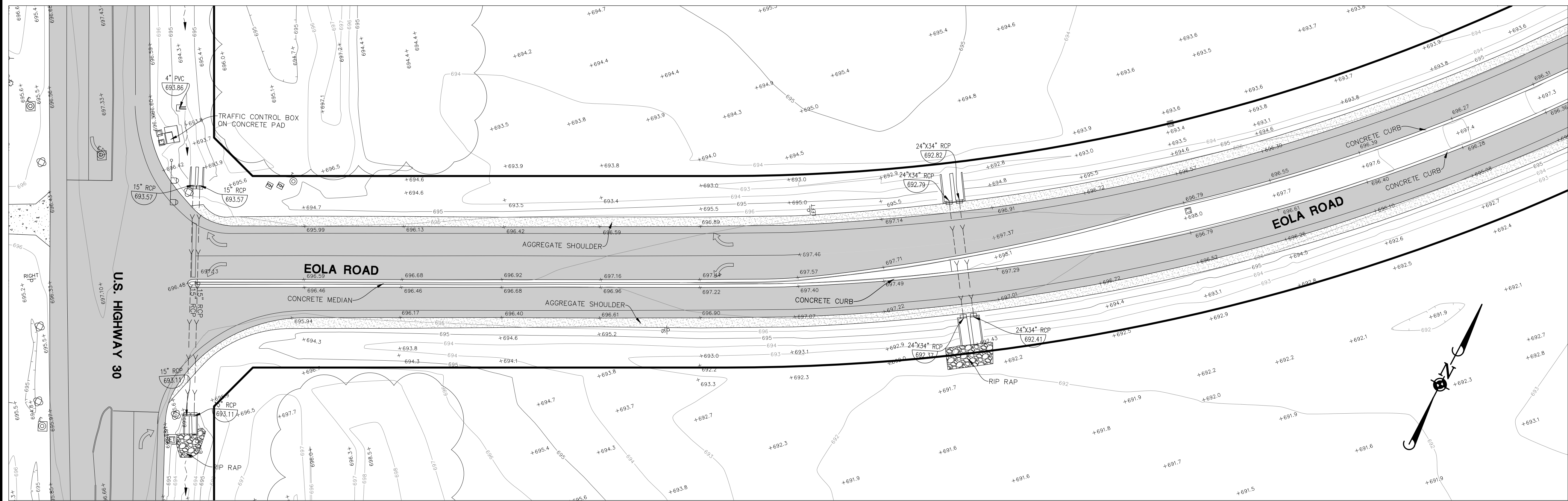
PULAU01	9 of 14	SHEET	PROJECT NAME: JLD	LINCOLN PRAIRIE AURORA PROPERTY		
			DESIGNED BY: PJA		AURORA, ILLINOIS	
			CHECKED BY: PJA			TOPOGRAPHIC SURVEY
			DATE: 08/23/20			

**Manhard**  
CONSULTING LTD.  
One Overlook Point, Suite 200, Lincolnshire, IL 60069 ph847.834.5550 fx847.834.0095 manhard.com  
Civil Engineers • Surveyors • Water Resource Engineers • Water & Wastewater Engineers  
Construction Managers • Environmental Scientists • Landscape Architects • Planners

DATE	REVISIONS	DRAWN BY
01/28/21	ADDED ADDITIONAL TOPO ALONG HIGHWAY 30	PGA



# TOPOGRAPHIC SURVEY

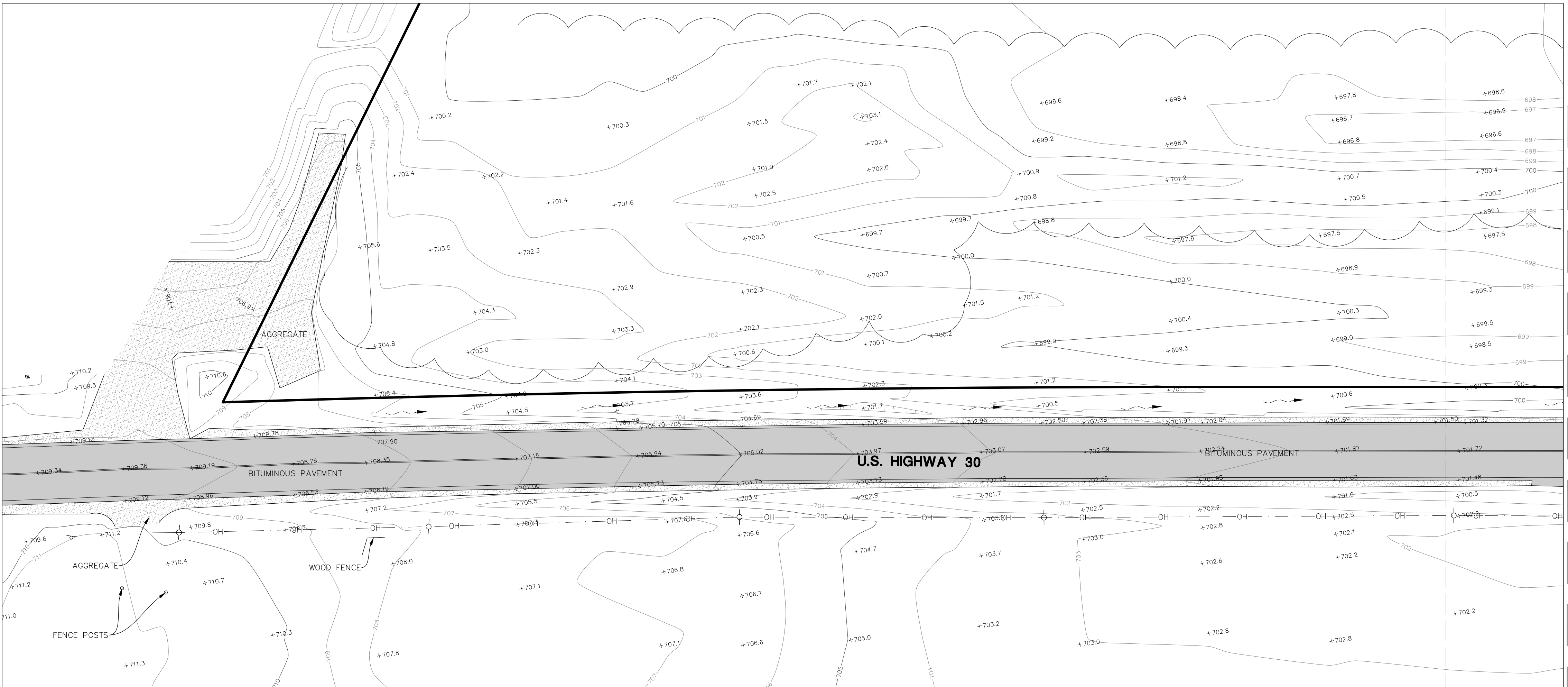




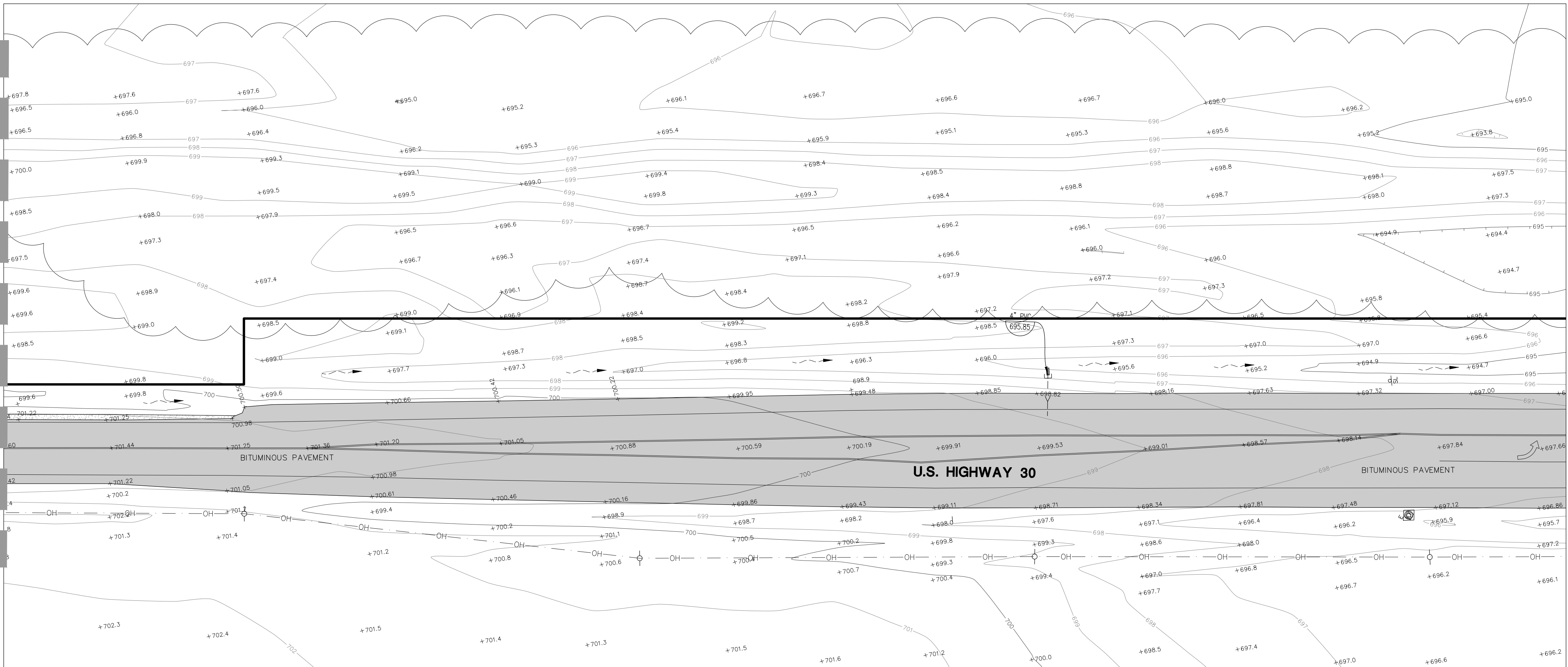




TOPOGRAPHIC SURVEY

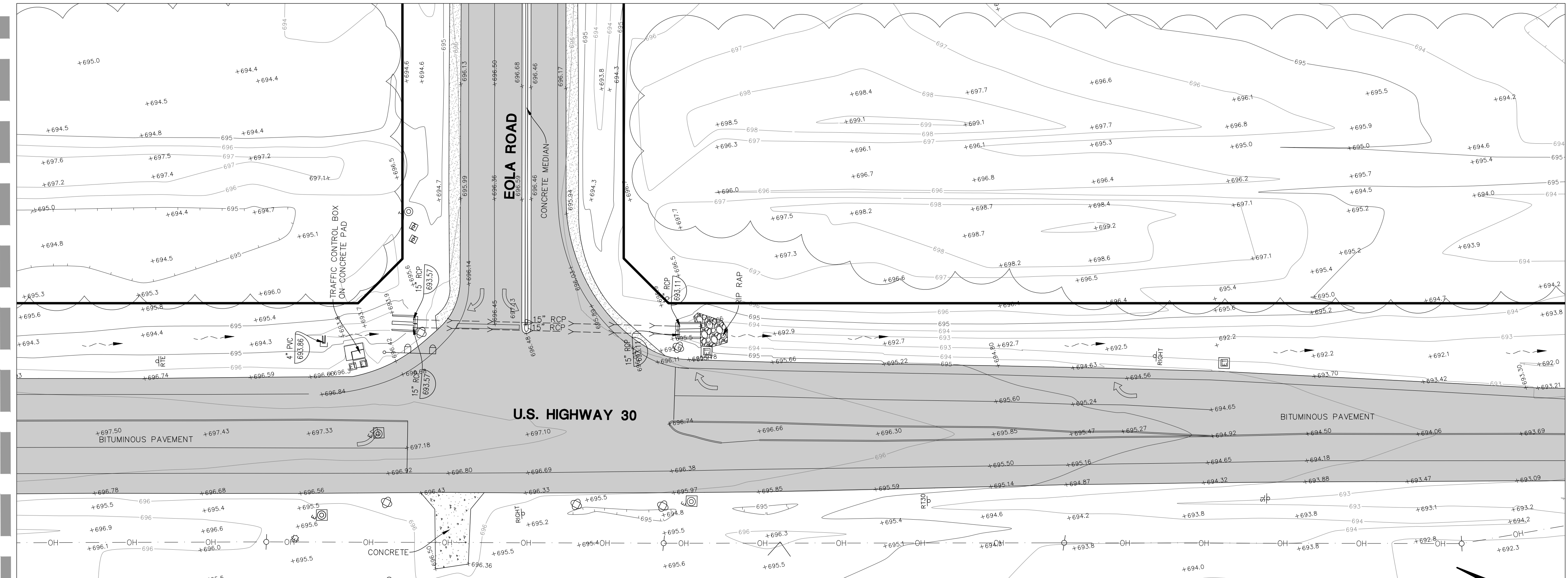


SEE BELOW



SEE ABOVE

SEE BELOW



SEE ABOVE

SEE SHEET 13

12 of 14

SHEET

DATE: 08/21/20

SCALE: 1"=30'

PROJECT: LINCOLN PRAIRIE AURORA PROPERTY

LOCATION: AURORA, ILLINOIS

TOPOGRAPHIC SURVEY

Manhard

CONSULTING LTD.

One Overlook Point, Suite 200, Lincolnshire, IL 60069

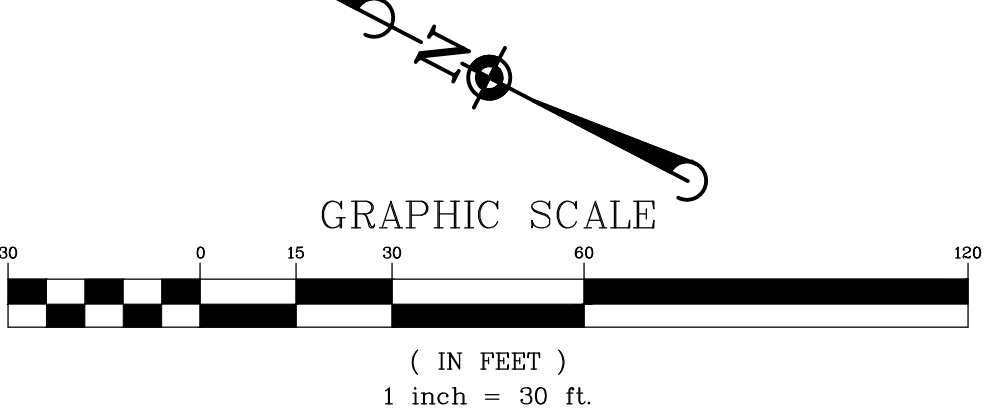
ph847.634.5550 f847.634.0095

manhard.com

Civil Engineers • Surveyors • Water Resource Engineers • Water & Wastewater Engineers

Construction Managers • Environmental Scientists • Landscape Architects • Planners

DATE	REVISIONS	DRAWN BY
01/28/21	ADDED ADDITIONAL TOPO ALONG HIGHWAY 30	PGA

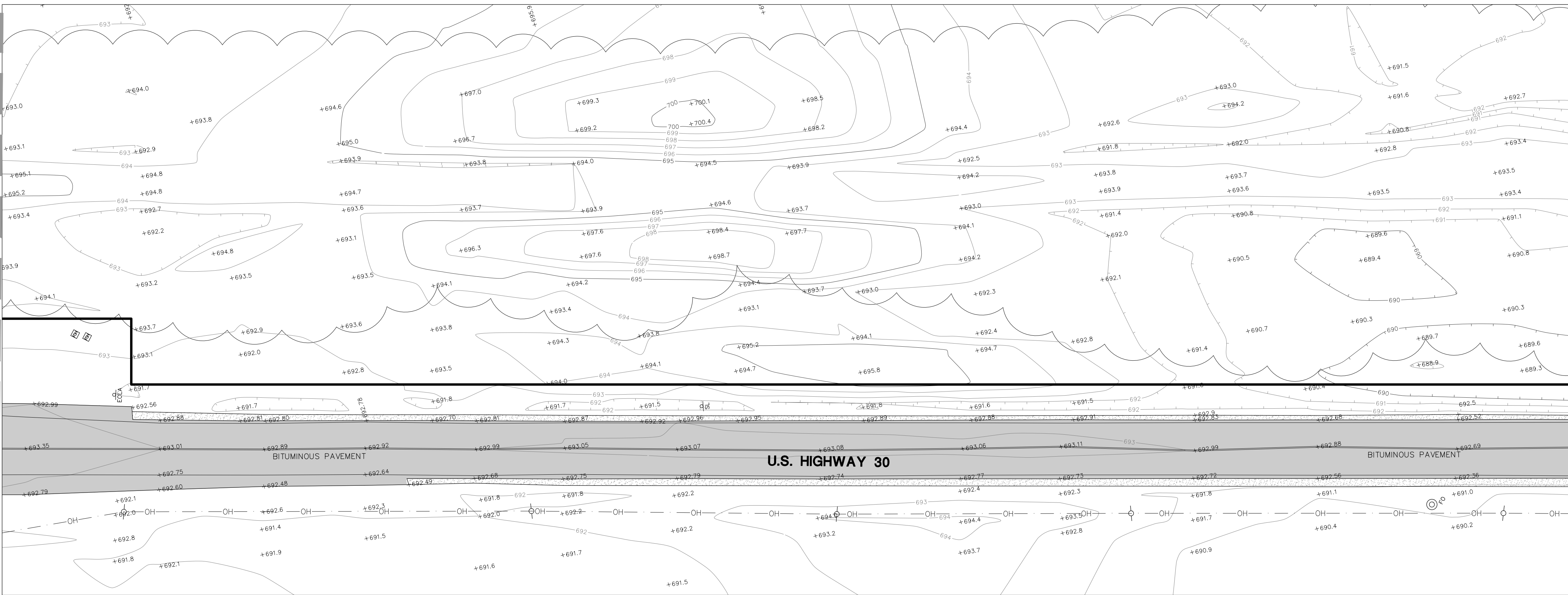




TOPOGRAPHIC SURVEY

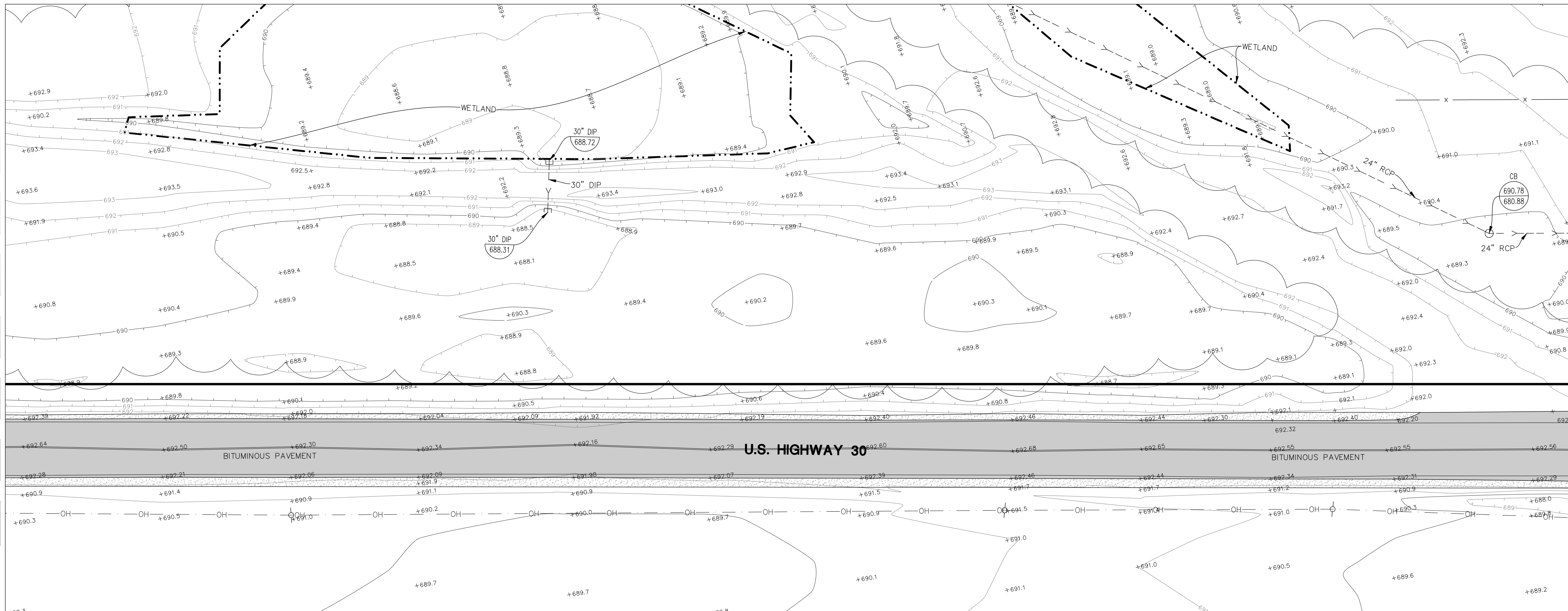
SEE SHEET 12

SEE BELOW



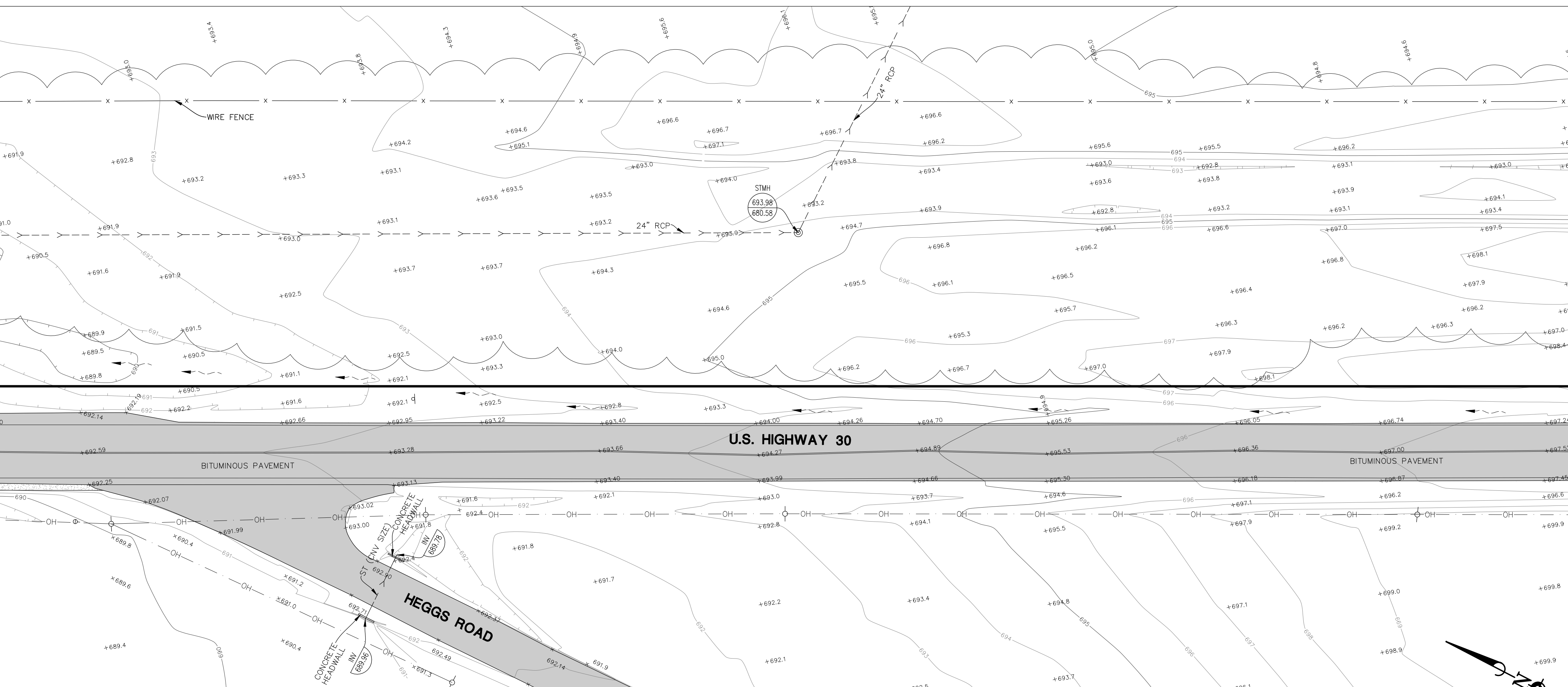
SEE ABOVE

SEE BELOW



SEE ABOVE

SEE SHEET 14



13 of 14  
SHEET

PROJECT: LINCOLN PRAIRIE AURORA PROPERTY  
LOCATION: AURORA, ILLINOIS  
DATE: 08/23/20  
SCALE: 1"=30'

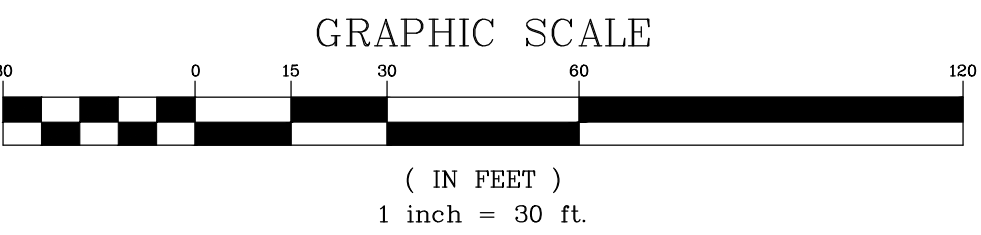
PROJECT: LINCOLN PRAIRIE AURORA PROPERTY  
LOCATION: AURORA, ILLINOIS  
DATE: 08/23/20  
SCALE: 1"=30'

Manhard

CONSULTING LTD.

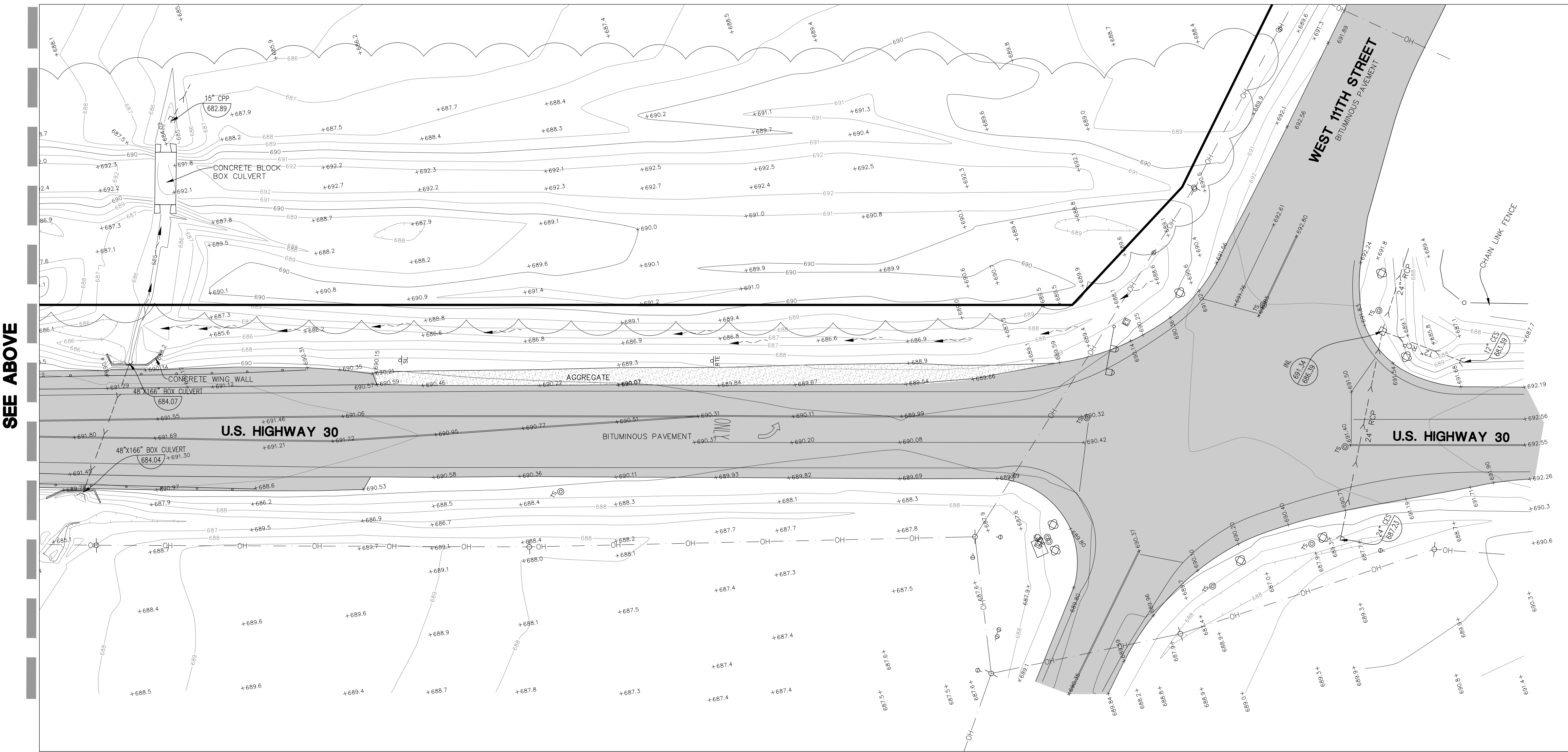
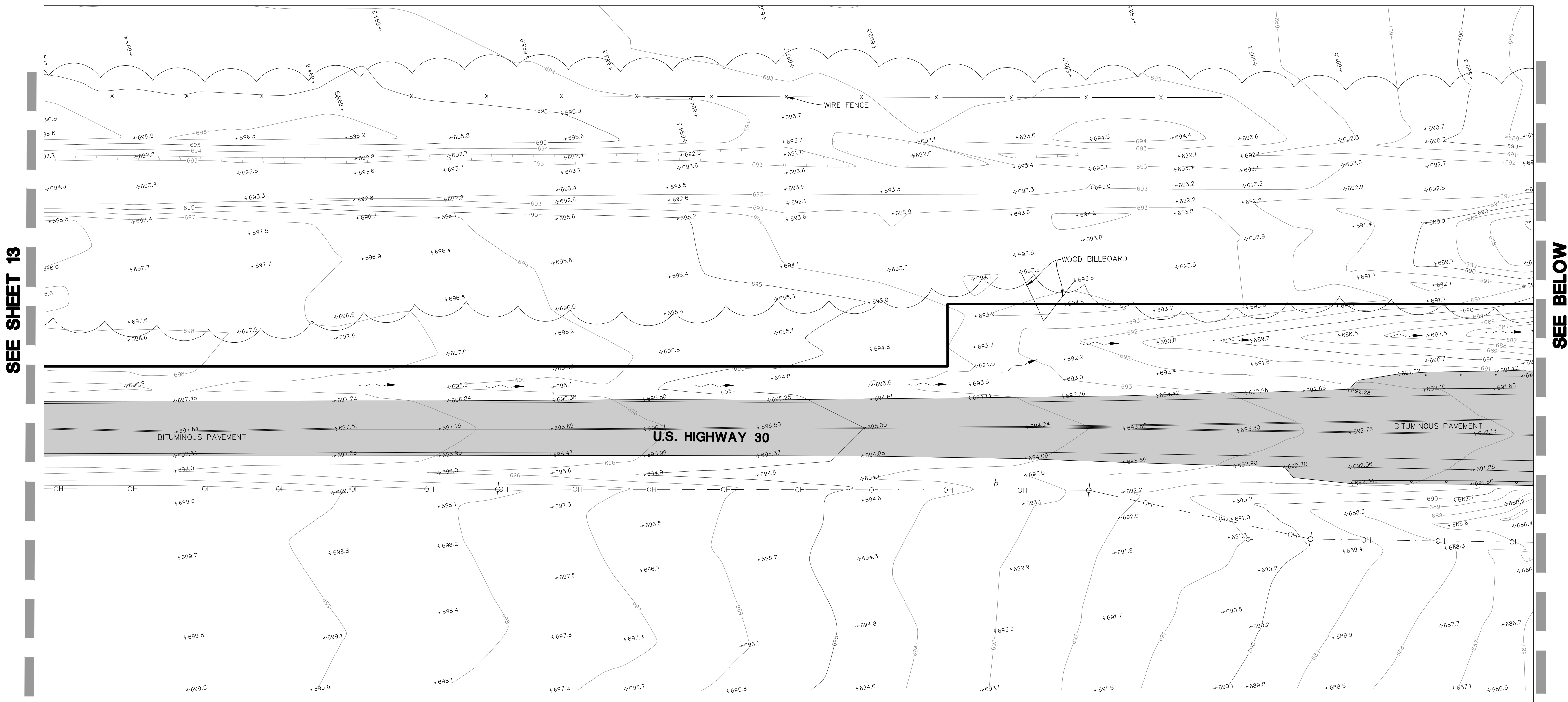
One Overlook Point, Suite 200, Lincolnshire, IL 60069  
Civil Engineers • Surveyors • Wetland Resource Engineers • Water & Wastewater Engineers  
Construction Managers • Environmental Scientists • Landscape Architects • Planners

DATE	REVISIONS	DRAWN BY
01/28/21	ADDED ADDITIONAL TOPO ALONG HIGHWAY 30	PGA





TOPOGRAPHIC SURVEY



14 of 14 SHEET	PROJECT NAME: JLD	LINCOLN PRAIRIE AURORA PROPERTY
	DRAWN BY: PCA	AURORA, ILLINOIS
	CHECKED BY: PCA	TOPOGRAPHIC SURVEY
	DATE: 08/21/20	

**Manhard**  
CONSULTING LTD.  
One Overlook Point, Suite 200, Lincolnshire, IL 60069 ph847.634.5550 fx847.634.0095 manhard.com  
Civil Engineers • Surveyors • Water Resource Engineers • Water & Wastewater Engineers  
Construction Managers • Environmental Scientists • Landscape Architects • Planners

DATE	REVISIONS	DRAWN BY
01/28/21	ADDED ADDITIONAL TOPO ALONG HIGHWAY 30	PCA

