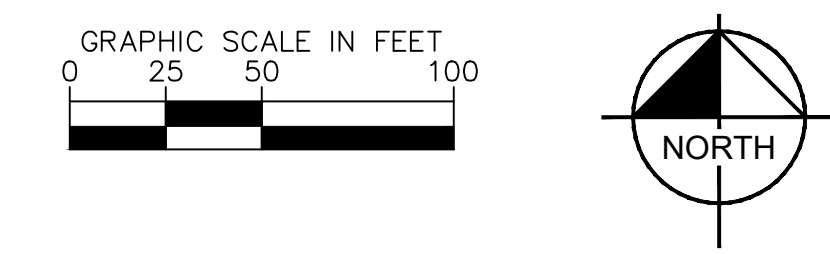


FIRE ACCESS PLAN FOR LOT 1A1, 2A1, 3A1, AND 4A1 OF THE THIRD RESUBDIVISION OF FOX VALLEY EAST REGION I UNIT NO. 1

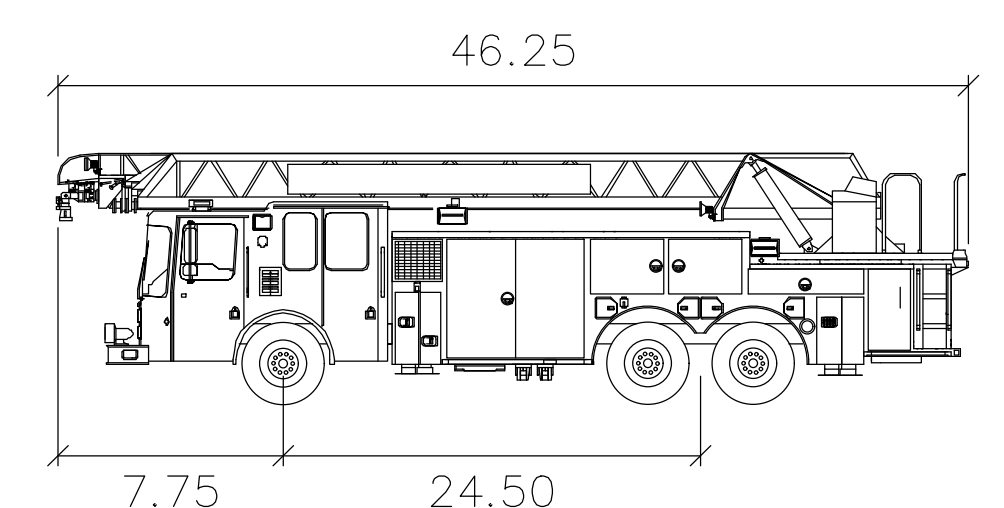


LEGEND

— W — W —	EX. WATER LINE
— XXX —	EX. HYDRANT
- - - - -	EX. CONTOUR
— W — W —	PROPOSED WATER LINE
—	PROPOSED FIRE DEPARTMENT CONNECTION
◆	PROPOSED FIRE HYDRANT
- - - - -	PROPOSED CONTOUR

LEGEND

SITE AREA	10.87 - AC
BUILDING FLOOR AREA	370,000 - SF
APPROXIMATE BUILDING HEIGHT RESIDENTIAL	49-52 - FT
FIRE HYDRANT 400' RADIUS	
FIRE ACCESS LANE	
26'x40' STAGING AREA (AROUND HYDRANT)	



Aurora Fire Truck

feet

Width : 7.83

Track : 8.00

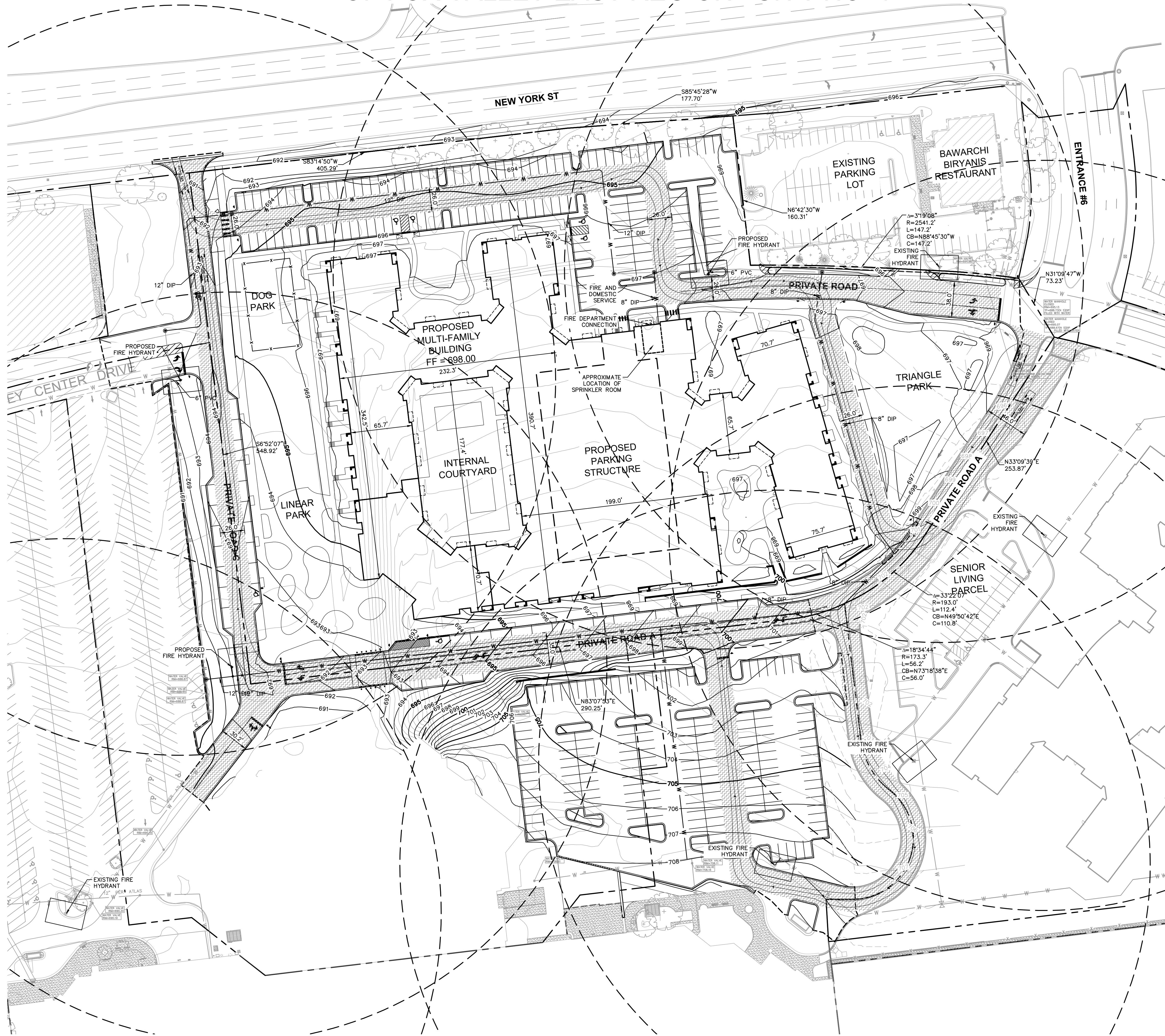
Lock to Lock Time : 6.0

Steering Angle : 40.0

Fire Access Plan Data Table

Description	Value	Unit
a) Building Height	52.00	feet
b) Building Square Footage (typical)	475,000	square feet
c) Building fire suppression information including any proposed use of sprinkler systems, fire alarm systems, whether fire extinguishers are needed: Fire suppression in compliance with NFPA 13		

d) General description of business to be conducted within each building including: will there be rack storage in the building, will there be storage of combustible materials over twelve feet in height, clearance of sprinkler heads and stored materials (18 inch minimum):
Multi-family residential building; parking garage



Drawing name: K:\GIS\DEV\16890002_Focus_Aurora_ILV Design\CAD\Exhibits\0312-6 Fire Access Plan.dwg EX Apr 13, 2022 3:04pm by Kolya Sullivan
 This document, together with the concepts and designs presented herein, is intended only for the specific purpose and client for which it was prepared. Reuse of and improper reliance on this document without written authorization and adaptation by Kimley-Horn and Associates, Inc. shall be without liability to Kimley-Horn and Associates, Inc.

 © 2022 KIMLEY-HORN AND ASSOCIATES, INC. 4251 WINFIELD ROAD, SUITE 600 WINSTON-SALEM, NC 27157 PHONE: 630-482-2550 WWW.KIMLEY-HORN.COM	SCALE: AS NOTED DESIGNED BY: KCO DRAWN BY: KCO CHECKED BY: ANH	CITY COMMENTS REVISIONS 04/13/22 KCO DATE BY
 ATLANTIC	 CENTENNIAL	 FOCUS
FIRE ACCESS PLAN FOR LOT 1A1, 2A1, 3A1, AND 4A1 OF THE SECOND RESUBDIVISION OF FOX VALLEY EAST REGION I UNIT NO. 1		
RESIDENTIAL PHASE II AT FOX VALLEY MALL 195 FOX VALLEY CENTER AURORA, IL 60504 OWNER: ATLANTIC RESIDENTIAL 3500 LENOX RD, SUITE 1250 ATLANTA, GA 30326		
ORIGINAL ISSUE: 03/01/2022 KHA PROJECT NO. 168909002 SHEET NUMBER EX		